

Printer Sharing the PT-9500pc in a Windows Environment

The procedure for using the printer sharing feature in Microsoft Windows to share the PT-9500pc is described below.

The information provided has been verified on our test network, but is not guaranteed for all networks.

For printer sharing to be performed correctly, the following conditions must be met:

The network must be constructed appropriately.

The user access permissions for each computer must be set appropriately.

We cannot provide support for problems that may result from network or user settings. For details on the appropriate settings, consult your network administrator or refer to the Windows manual and help features.

Sharing settings for Windows 2000, Windows XP Professional, and Windows XP Home

[Connecting the P-touch and specifying computer sharing](#)

[Specifying client computer settings](#)

Sharing settings for Windows 98SE

[Connecting the P-touch and specifying computer sharing](#)

[Specifying client computer settings](#)

[Other information](#)

Sharing settings for Windows 2000, Windows XP Professional, and Windows XP Home Edition

<Windows XP should be used with Service Pack 1 or later.>

<The Windows Server operating system is incompatible.>

Connecting the P-touch and specifying computer sharing

Install P-touch Editor and the printer driver.

For details on the installation procedure, refer to the manual for the software.

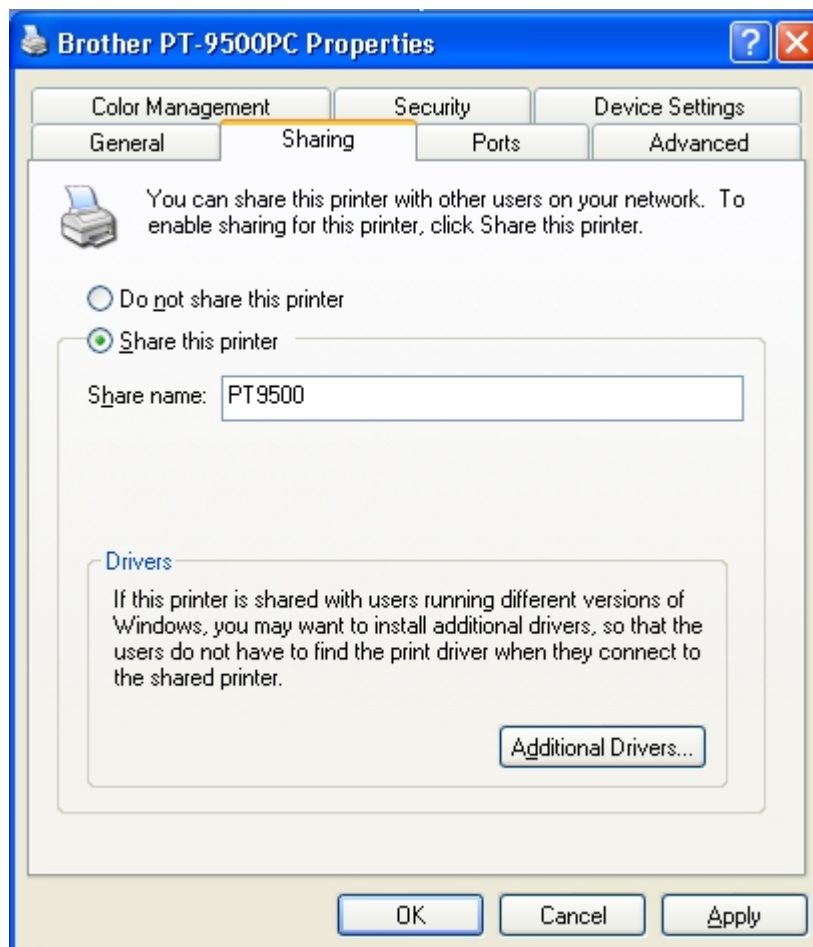
Specify printer sharing settings.

Open the Printers (or Printers and Faxes) folder.

Right-click the printer icon for PT-9500pc, and then click "Sharing..." in the menu that appears.

In the Properties dialog box, select the "Share this printer" check box.

In the "Share name" box, type in a name that can easily be recognized on the network. ("PT9500" for this example)



Note: Do not register other versions of the Windows driver in the Additional Drivers dialog box and install drivers on client computers.

Specifying client computer settings
(Windows XP Pro / XP Home / 2000)

Install P-touch Editor and the printer driver.

For details on the installation procedure, refer to the manual for the software.

Tip!

Completing installation of the driver without connecting the PT-9500pc

In the dialog box that appears after starting up the CD-ROM included with the PT-9500pc, select "Advanced setup".

Click the button for the printer driver.

Select "Network Connection" as the connection method, and then install the driver.

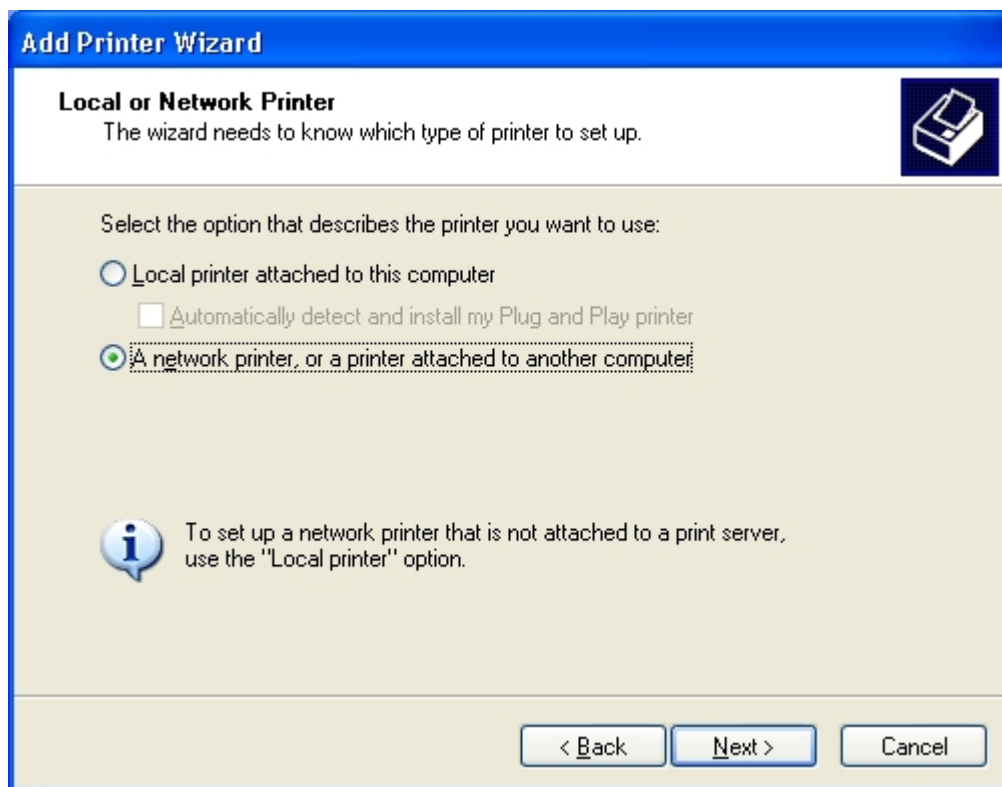
A driver with a "FILE:" port is created.

Install the driver to connect to the shared computer.

Open the Printers (or Printers and Faxes) folder.

Double-click the Add printer icon or click "Add printer" in the "File" menu to start up the Add Printer Wizard.

In the Add Printer Wizard dialog box, click the Next button.



Select "A network printer, or a printer attached to another computer", and then click the Next button.

Add Printer Wizard

Specify a Printer
If you don't know the name or address of the printer, you can search for a printer that meets your needs.

What printer do you want to connect to?

☐ Find a printer in the directory

☒ Connect to this printer (or to browse for a printer, select this option and click Next):

Name:

Example: \\server\printer

☐ Connect to a printer on the Internet or on a home or office network:

URL:

Example: http://server/printers/myprinter/.printer

< Back Next > Cancel

Type "\\server_name\printer_name", and then click the Next button.

OR

Without typing in the printer name, click the Next button to select from a list of printers.

Add Printer Wizard

Browse for Printer
When the list of printers appears, select the one you want to use.

Printer:

Shared printers:

PC002	
PT9500	Brother PT-9500PC
QL550	Brother QL-550

Printer information

Comment:

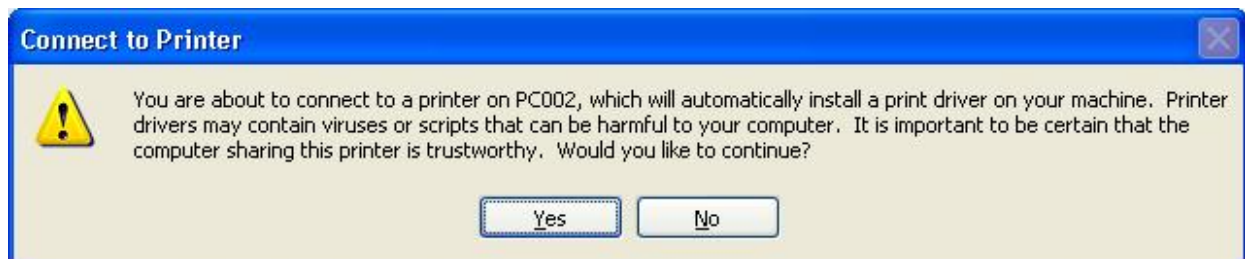
Status: Ready Documents waiting: 0

< Back Next > Cancel

Select the shared printer("Brother PT-9500PC" for this example), and then click the Next button.

If the printer to be shared does not appear in this list, check that the network settings, user settings, and printer sharing settings are correctly specified.

In Windows XP, the following message may appear. If there are no problems with the computer sharing the printer, click the Yes button.



In the screen for specifying the default printer, select "No", and then click the Next button.

In the final dialog box, click the Finish button to finish specifying settings.

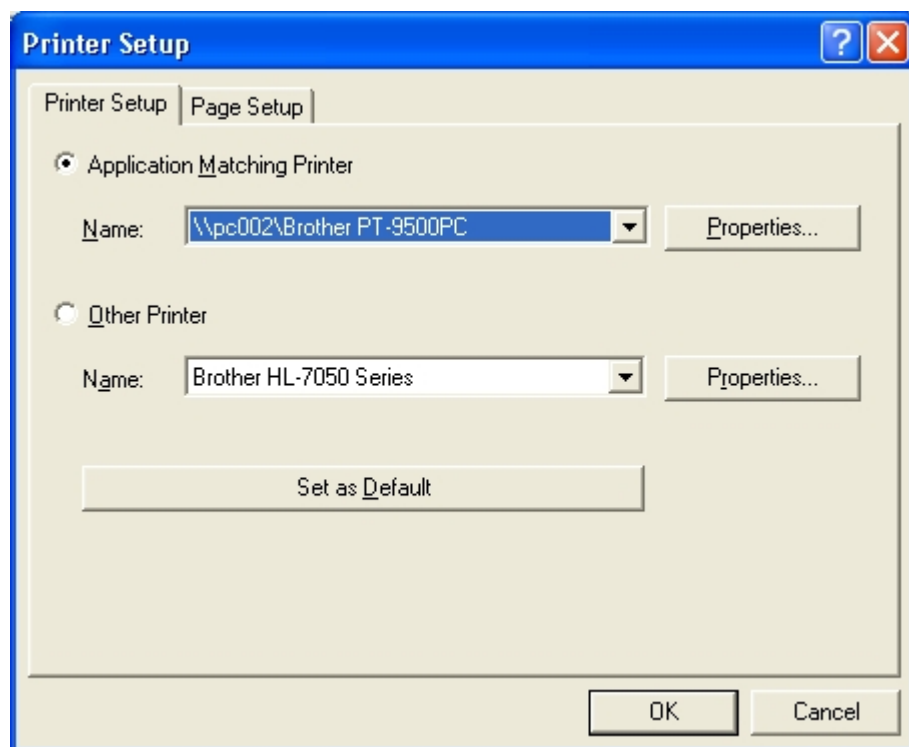


Two printer drivers are created.

The shared printer is Brother PT-9500PC on pc002.

Specifying P-touch Editor settings

Click “Printer Setup” in the “File” menu of P-touch Editor to display the Printer Setup dialog box. From the list below “Application Matching Printer”, select the shared printer PT-9500pc, and then click the Set as Default button to set the printer as the default printer.



If the shared printer PT-9500pc is in the list below “Other Printer”, installation of the printer driver failed. Try installing the printer again from the beginning.

Sharing settings for Windows 98SE

Connecting the P-touch and specifying computer sharing

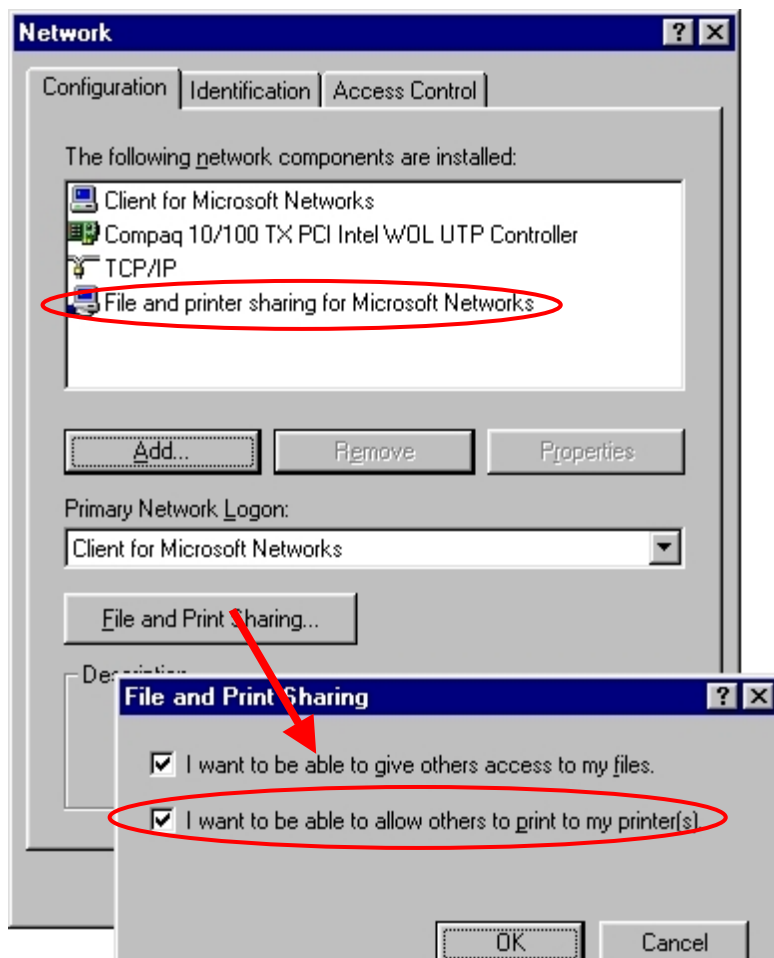
Check that the computer running Windows is set for printer sharing.

From Control Panel, display the Network dialog box.

Check the following:

Is “File and printer sharing for Microsoft Networks” installed?

Is the “I want to be able to allow others to print to my printer(s)” check box selected?



Install P-touch Editor and the printer driver.

For details on the installation procedure, refer to the manual for the software.

Specify printer sharing settings.

Open the Printers folder in Control Panel.

Right-click the printer icon for PT-9500pc, and then click “Properties” in the menu that appeared.

Click the Sharing tab in the Properties dialog box, and then select “Shared As”.

In the “Share Name” box, type in a name that can easily be recognized on the network.

(“PT9500” for this example).

Brother PT-9500PC Properties ? X

General Details Color Management **Sharing** Paper Graphics Advanced

☐ Not Shared

☒ Shared As:

Share Name:

Comment:

Password:

Specifying client computer settings <Windows 98SE>

Install P-touch Editor and the printer driver.

For details on the installation procedure, refer to the manual for the software.

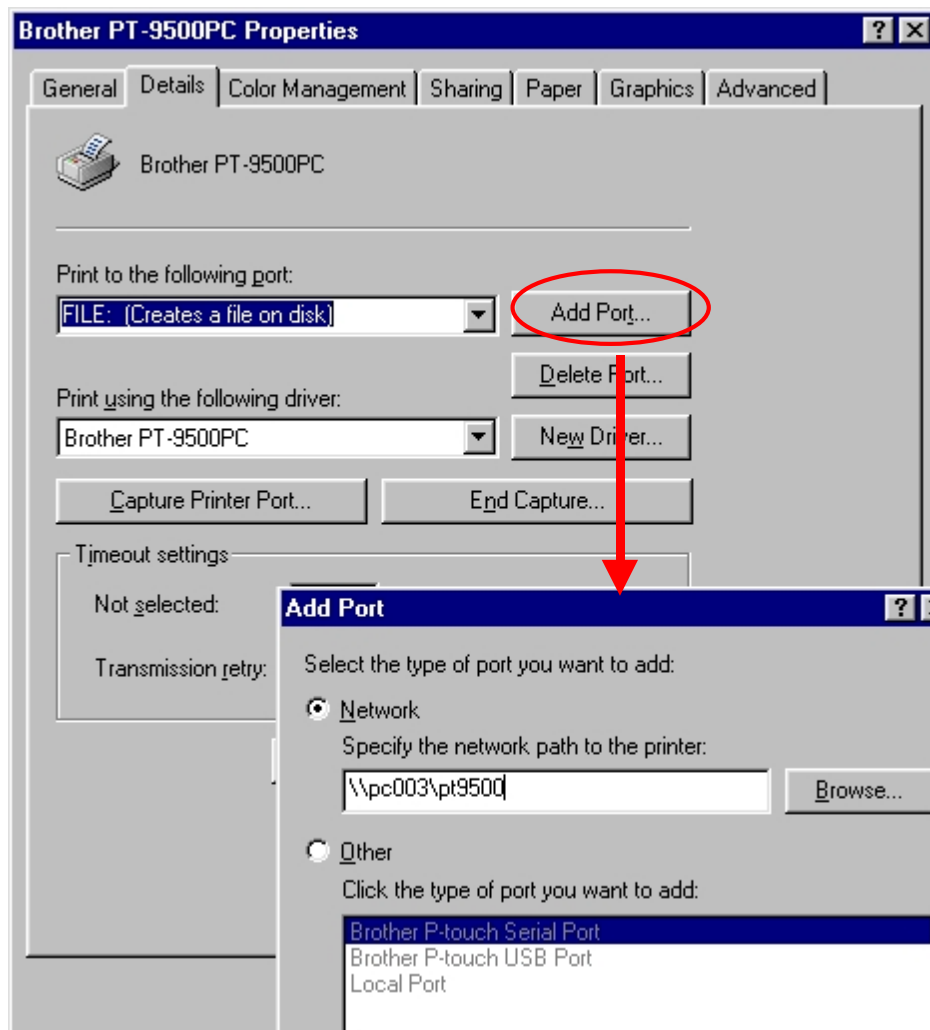
Change the printer port to a network path.

From the Printers folder, display the Properties dialog box for PT-9500pc.

Click the Details tab, and then click the Add Port button to display the Add Port dialog box.

Type “\\server_name\printer_name” as the network path to the printer.

The printer can be searched for by clicking the Browse button.



<Other information>

Print monitor window

The print monitor window appears on the computer that is connected to the P-touch. Therefore, errors, such as for an incorrect tape width, appear on the display of the computer connected to the P-touch, instead of on the client computer.

To hide the print monitor window from the display of the computer connected to the P-touch

[Setting procedure]

Connect the P-touch, and then display the Properties dialog box for PT-9500pc from the Printers folder of the computer set to be shared.

Click the Device Settings tab, and then set "Monitor Size" to "Icon".

With this setting, the print monitor window appears only when an error occurs and does not appear during normal printing.

(Change the setting on a shared computer when the print monitor window is in the way.)

Rights for installing the software on multiple computers

The user may install copies of this software on one or more computers (at the user's place of business) only for the purpose of printing from a P-touch.

By installing P-touch Editor version 4.0, you indicate your acceptance of the License Agreement provided below.

1. Grant of License.

Brother grants you the following license:

- 1) To install one copy of the SOFTWARE on your single computer hardware and use, display and execute the same: provided, however, that if the SOFTWARE is packaged with Brother hardware products or constitutes any version-ups of a software that has been packaged with Brother hardware products, you may install the SOFTWARE on your multiple computer hardware and use the same inside of your single location for the sole purpose of output with such Brother hardware products.
- 2) To make only one copy of the SOFTWARE solely for archival purposes: provided that such copy shall include any and all copyright notices and/or other notices relating to rights to any intellectual property in the original SOFTWARE in form totally identical with those in such original SOFTWARE.