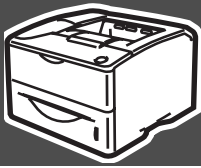


Read this Quick Setup Guide before using the printer.  
Before you can use the printer, you must set up the hardware and install the driver.



Step 1



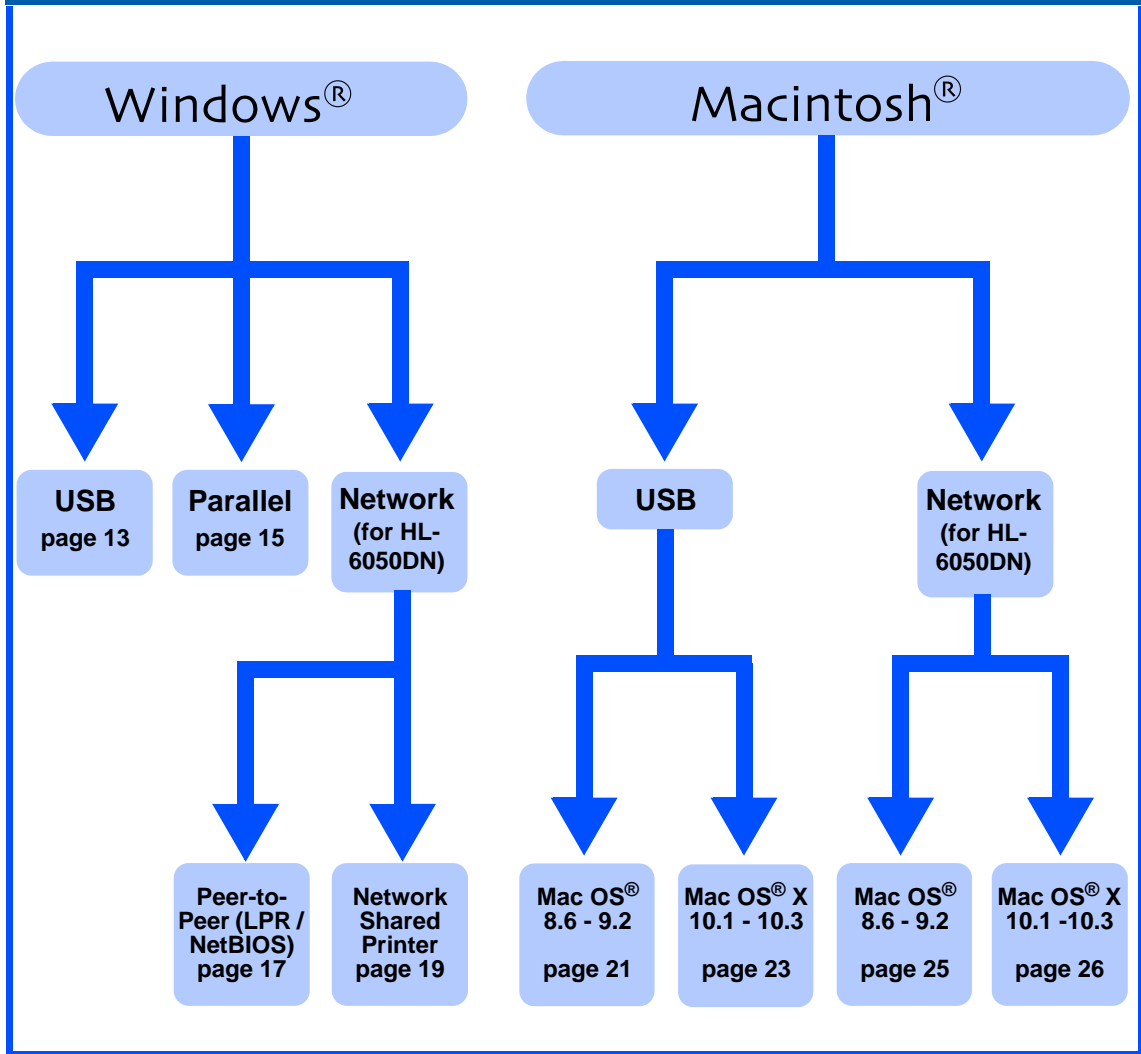
## Setting Up Your Printer

Setting Up  
Your Printer

Step 2



## Installing the Driver



Windows®  
USB

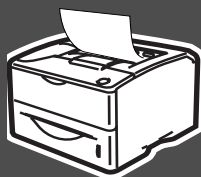
Windows®  
Parallel

Windows®  
Network

Installing the Driver

Macintosh®  
USB

Macintosh®  
Network



## Setup is Complete!

For  
Administrators

For the latest driver and to find the best solution for your problem or question, access the Brother Solutions Center directly from the CD-ROM/Driver or go to <http://solutions.brother.com>. Keep this Quick Setup Guide and supplied CD-ROM in a convenient place for quick and easy reference at all times.

# Table of Contents

|                                 |   |
|---------------------------------|---|
| To Use the Printer Safely ..... | 2 |
| Regulations .....               | 3 |

## ■ Getting Started

|                         |   |
|-------------------------|---|
| Carton Components ..... | 4 |
| Control Panel .....     | 5 |
| Supplied CD-ROM .....   | 6 |

## Step 1 Setting Up Your Printer

|  |    |
|--|----|
| Insert the CD-ROM into the CD-ROM Drive .....    | 7  |
| Install the Drum Unit Assembly .....             | 8  |
| Load Paper in the Paper Tray .....               | 9  |
| Print a Test Page .....                          | 10 |
| Setting Your Language on the Control Panel ..... | 11 |

## Step 2 Installing the Driver

Windows®

|  |    |
|--|----|
| For USB Interface Cable Users .....                                  | 13 |
| For Parallel Interface Cable Users .....                             | 15 |
| For Network Interface Cable Users (For HL-6050DN) .....              | 17 |
| For Brother Peer-to-Peer Network Printer Users (LPR / NetBIOS) ..... | 17 |
| For Network Shared Printer Users .....                               | 19 |

Macintosh®

|   |    |
|---|----|
| For USB Interface Cable Users .....                     | 21 |
| For Mac OS® 8.6 to 9.2 Users .....                      | 21 |
| For Mac OS® X 10.1 to 10.3 Users .....                  | 23 |
| For Network Interface Cable Users (For HL-6050DN) ..... | 25 |
| For Mac OS® 8.6 to 9.2 Users .....                      | 25 |
| For Mac OS® X 10.1 to 10.3 Users .....                  | 26 |

## ■ For Administrators (HL-6050DN)

|  |    |
|--|----|
| Installing the BRAdmin Professional utility<br>(Windows® Users Only) .....   | 28 |
| Web BRAdmin (Windows® Users Only) .....  | 28 |
| Setting your IP Address, Subnet Mask and Gateway using BRAdmin Professional utility<br>(Windows® Users Only) ..... | 29 |
| Print Printer Settings Page .....  | 29 |
| Factory Default Setting .....  | 29 |

## ■ Other Information

|                               |    |
|-------------------------------|----|
| Shipment of the Printer ..... | 30 |
| Options .....                 | 31 |





## ■ Troubleshooting




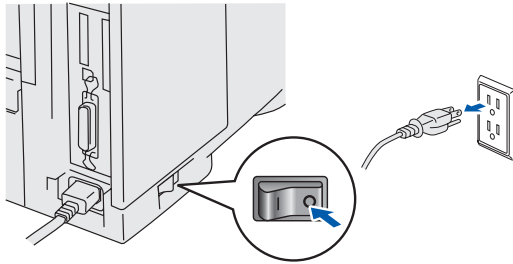

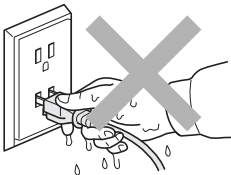

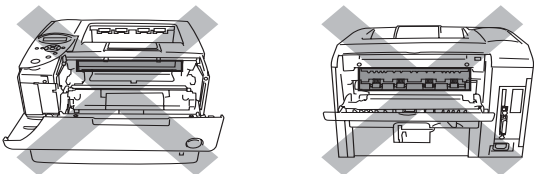

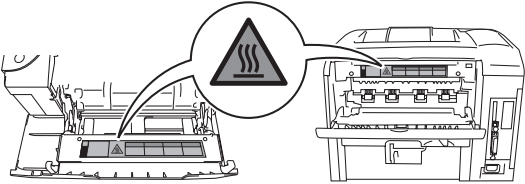
User's Guide Chapter 6

# Safety Precautions

## To Use the Printer Safely

|  |   |  |   |
|--|---|--|---|
|  <p><b>Warning</b></p> |  <p><b>Note</b></p>          |  <p><b>Hint</b></p> |  <p><b>User's Guide</b><br/><b>Network</b><br/><b>User's Guide</b></p> |
| <p>Indicates warnings that must be observed to prevent possible personal injury.</p>                   | <p>Indicates cautions that must be observed to use the printer properly or prevent damage to the printer.</p> | <p>Indicates notes and useful tips to remember when using the printer.</p>                           | <p>Indicates reference to the User's Guide or Network User's Guide which is on the CD-ROM we have supplied.</p>   |

### Warning

|  |  |
|--|--|
|  <p>There are high voltage electrodes inside the printer. Before replacing internal parts, cleaning the printer or clearing a paper jam, make sure you have turned OFF the power switch and unplugged the AC power cord from the AC power outlet/socket.</p> |    |
|  <p>Do not handle the plug or AC power cord with wet hands. This constitutes an electric shock hazard.</p>   |    |
|  <p>After you have just used the printer, some internal parts of the printer are extremely hot. When you open the front cover or back cover of the printer, never touch the shaded parts shown in the illustration.</p>                                    |  <p><b>Inside the printer (Front View)</b>      <b>Open the Back Output Tray (Back View)</b></p> |
|  <p>The fuser unit is marked with a caution label. Please do Not remove or damage the label.</p>   |    |

# Regulations

## Radio interference

This printer follows EN55022 (CISPR Publication 22)/Class B.

Before you use this product, make sure that you use a double-shielded parallel interface cable with twisted-pair conductors and that it is marked "IEEE 1284 compliant". The cable must not be more than 2.0 metres long.

## IEC 60825 specification (220 to 240 volt model only)

This printer is a Class 1 laser product as defined in IEC 60825 specifications. The label shown below is attached in countries where it is needed.



This printer has a Class 3B laser diode which produces invisible laser radiation in the scanner unit. You should not open the scanner unit under any circumstances.

## Warning

Use of controls or adjustments or performance of procedures other than those specified herein may result in hazardous radiation exposure.

## Internal laser radiation

Maximum radiation power: 10 mW  
Wave length: 760 - 810 nm  
Laser class: Class IIIb

## IMPORTANT - For Your Safety

To ensure safe operation the supplied three-pin plug must be inserted only into a standard three-pin power outlet that is properly grounded through the standard electrical wiring.

Extension cords used with this printer must be three-pin plug type and correctly wired to provide proper grounding. Incorrectly wired extension cords may cause personal injury and equipment damage.

The fact that the equipment operates satisfactorily does not imply that the power is grounded and that the installation is completely safe. For your safety, if in any doubt about the effective grounding of the power, call a qualified electrician.

## Disconnect device

You must install this printer near a power outlet that is easily accessible. In case of an emergency, you must disconnect the power cord from the power outlet to shut off the power completely.

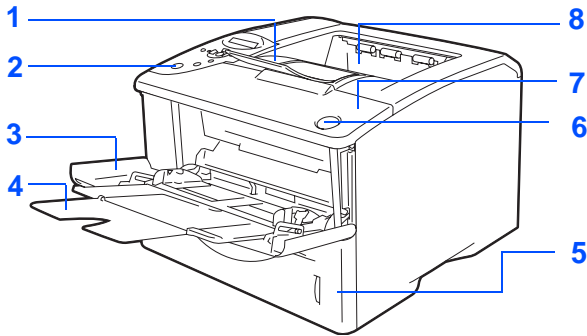
## Caution for LAN connection (For model HL-6050DN only)

Connect this product to a LAN connection that is not subjected to over voltages.

# Getting Started

## Carton Components

### Printer

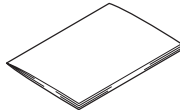


- 1 Face-down Output Tray Support Flap (Support Flap)
- 2 Control Panel
- 3 Multi-purpose Tray (MP Tray)
- 4 MP Tray Support Flap
- 5 Paper Tray
- 6 Front Cover Release Button
- 7 Front Cover
- 8 Face-down Output Tray (Top Output Tray)

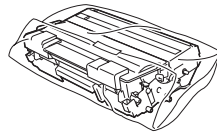


#### CD-ROM

(including User's Guide)

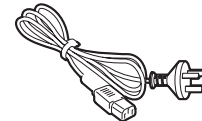


#### Quick Setup Guide



#### Drum Unit Assembly

(including Toner Cartridge)




#### AC Power Cord

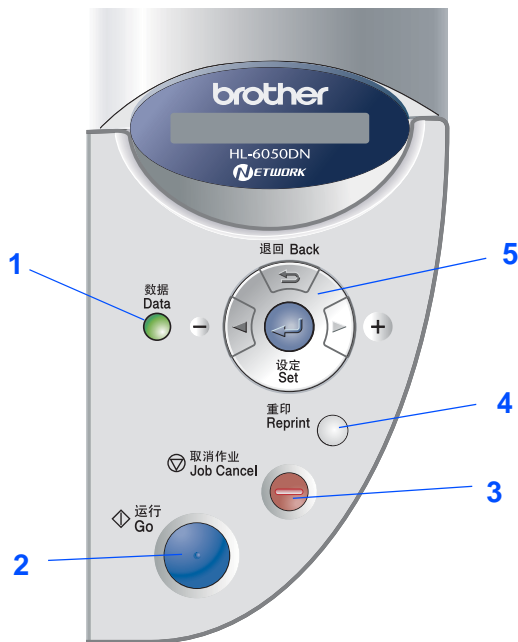
Carton components may differ from one country to another.


The power cord may be slightly different to the one in the diagram above, depending upon which country you bought the printer in.

Save all packing materials and the printer carton.

-  ■ *The interface cable is not a standard accessory. Buy the appropriate interface cable for the interface you intend to use (Parallel, USB or Network).*
- *It is recommended to use a Parallel or USB interface cable that is not longer than 2.0 meters.*
- *For Parallel interface cable users, use a shielded interface cable that is IEEE 1284-compliant.*
- *Use a Hi-Speed USB 2.0 certified cable if your computer uses a Hi-Speed USB 2.0 interface.*

# Control Panel



 The control panel has a buzzer function for visually-impaired users. See Chapter 3 in the User's Guide for more information.



User's Guide Chapter 3.

## 1 Data LED : Orange

|                 |                                     |
|-----------------|-------------------------------------|
| <b>On</b>       | Data remains in the printer buffer. |
| <b>Blinking</b> | Receiving or processing data.       |
| <b>Off</b>      | No remaining data.                  |

## 2 Go Button


Exit from the control panel menu and reprint setting.  
Clear error messages.  
Pause / Continue printing.

## 3 Job Cancel Button

Stop and cancel the printer operation in progress.

## 4 Reprint Button

Select the Reprint menu.

 Please enhance the RAMDISK size when you want to use the Reprint functions without the CompactFlash.



User's Guide Chapter 4.

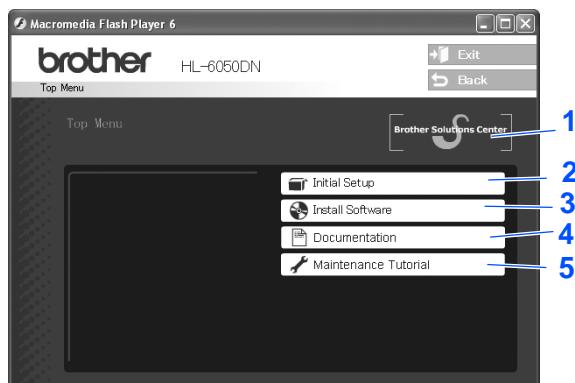
## 5 Menu Buttons

|             |   |
|-------------|---|
| <b>+</b>    | Move forward through menus.                                       |
| <b>-</b>    | Move backward through menus.                                      |
| <b>Set</b>  | Select the Control Panel.<br>Set the selected menus and settings. |
| <b>Back</b> | Go back one level in the menu structure.                          |

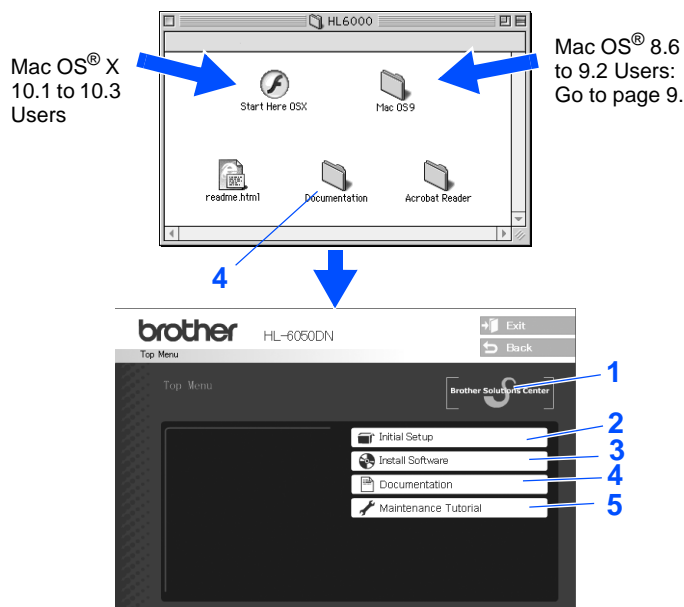
# Supplied CD-ROM

You can find a variety of information on the CD-ROM.

## Windows®



## Macintosh®



### 1 Brother Solutions Center

The Brother Solutions Center (<http://solutions.brother.com>) is a one-stop resource for all your printer needs. Download the latest drivers and utilities for your printers, read the FAQs and troubleshooting tips, or learn about printer solutions.

### 2 Initial Setup

Instructional movie for printer setup and driver installation. If you install the printer driver from **Initial Setup**, the PCL printer driver will be installed automatically.

### 3 Install Software

Installs the printer driver and utilities. If you want to use the PS printer driver, select **Custom Installation** from **Install Software** and follow the on-screen instructions.

### 4 Documentation

View the Printer User's Guide and Network User's Guide in PDF format. (Viewer included) User's Guide will be installed automatically when you install the driver. From the **Start** button, select **Programs**, your printer (e.g. Brother HL-6050DN), and **User's Guide**. If you do not want to install User's Guide, select **Custom Installation** from **Install Software**, and de-select **User's Guide** when you install the printer driver.

### 5 Maintenance Tutorial

Instructional movie for printer maintenance.



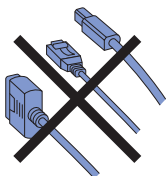
*For visually impaired users:  
Please see a HTML file, `readme.html`, on the supplied CD-ROM. You can read it with Screen Reader 'text-to-speech' software.*

## 1 Insert the CD-ROM into the CD-ROM Drive

### For Windows® Users



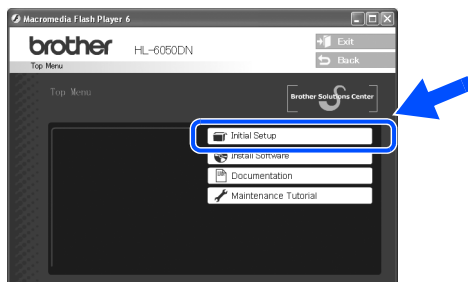
Do NOT connect the interface cable. Connecting the interface cable is done when installing the driver.



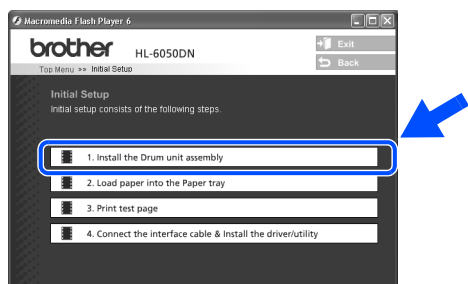
- 1 Insert the CD-ROM into your CD-ROM drive. The opening screen will appear automatically. Follow the on-screen instructions.



- 2 Click **Initial Setup** on the menu screen.



- 3 You can view the Initial Setup instructions and follow the steps on pages 8 to 11.



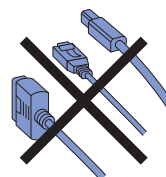
### For Macintosh® Users



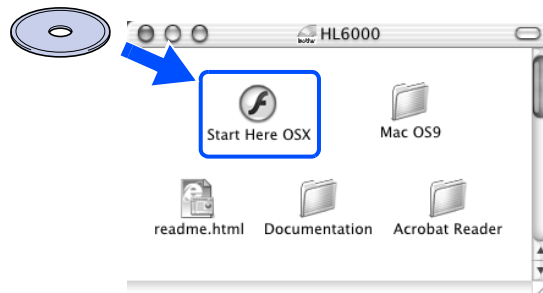
This is for Mac OS® X 10.1 to 10.3 Users. If you are Mac OS® 8.6 to 9.2 Users, go to next page.



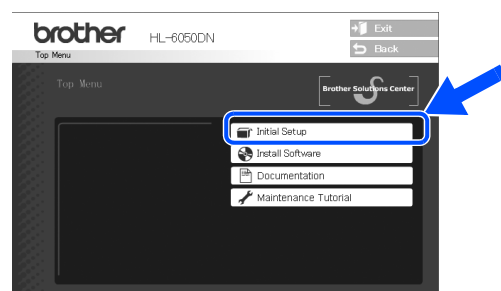
Do NOT connect the interface cable. Connecting the interface cable is done when installing the driver.



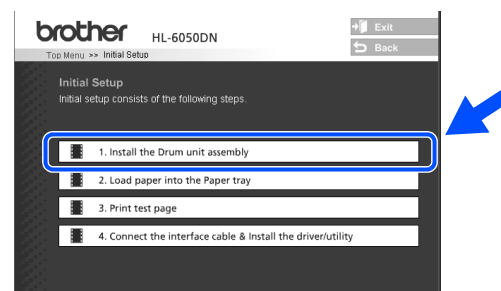
- 1 Insert the CD-ROM into your CD-ROM drive. Double-click the **Start Here OSX** icon. Follow the on-screen instructions.



- 2 Click **Initial Setup** on the menu screen.



- 3 You can view the Initial Setup instructions and follow the steps on pages 8 to 11.



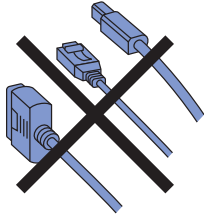




## 2 Install the Drum Unit Assembly



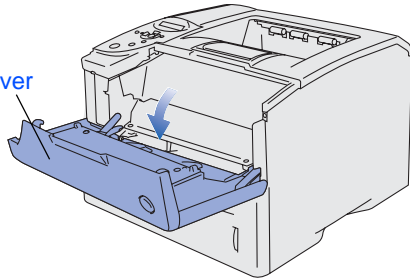
**Do NOT connect the interface cable. You will be prompted to connect the interface cable during the driver installation.**



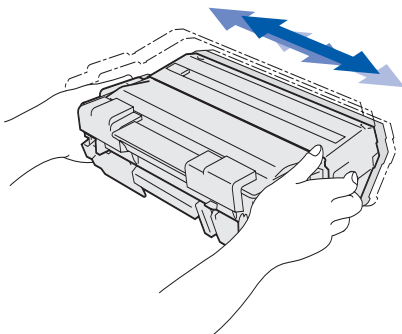
- 1 Open the front cover by pressing the front cover release button.



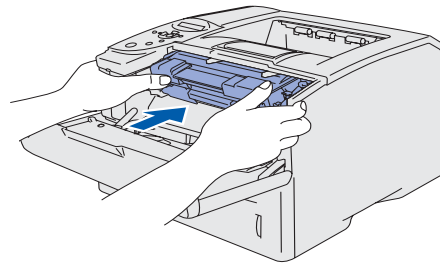
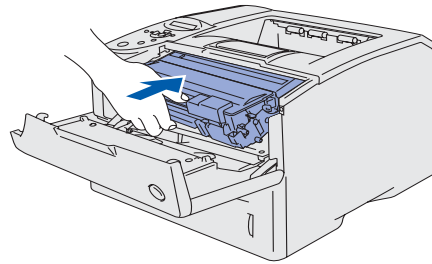
Front cover



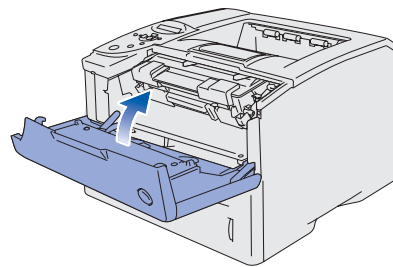
- 2 Unpack the drum unit assembly. Rock it from side to side several times to distribute the toner evenly inside the assembly.



- 3 Put the drum unit assembly into the printer.



- 4 Close the front cover of the printer.



Go to the next page

Setting Up  
Your Printer

Windows®  
USB

Windows®  
Parallel

Windows®  
Network

Macintosh®  
USB

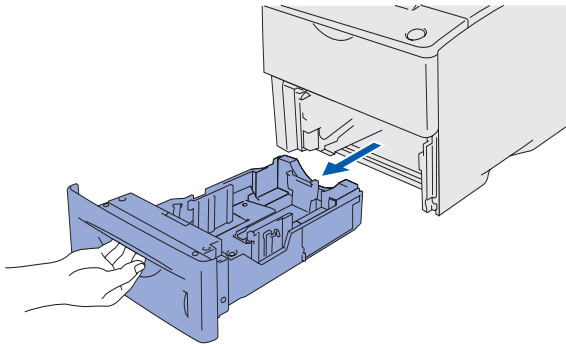
Macintosh®  
Network

For  
Administrators

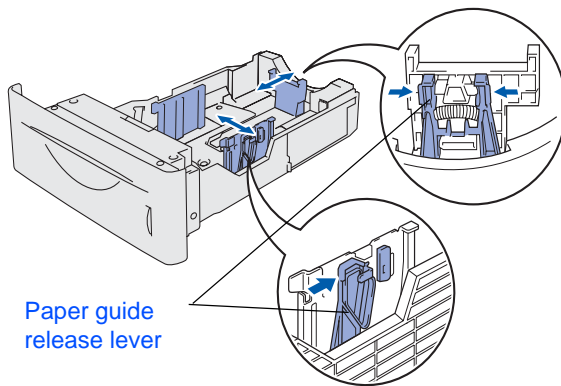
Installing the Driver


## 3 Load Paper in the Paper Tray

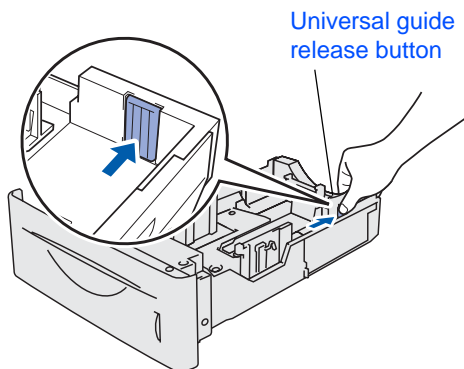
- 1 Pull the paper tray completely out of the printer.



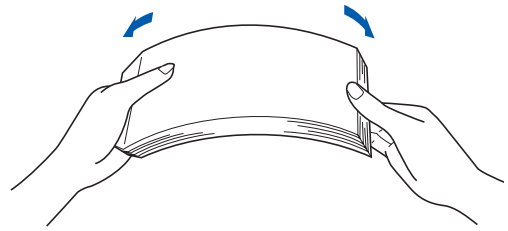
- 2 While pressing the paper guide release lever, slide the adjusters to fit the paper size. Check that the guides are firmly in the slots.



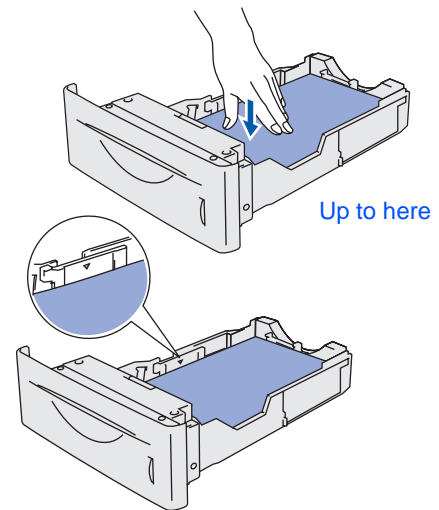
-  For Legal size paper, press the universal guide release button and pull out the back of the paper tray.



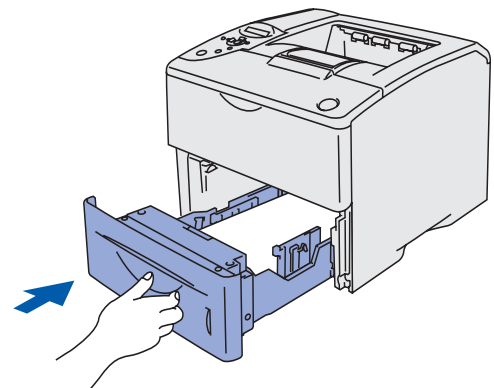
- 3 Fan the stack of paper well to avoid paper jams and misfeeds.



- 4 Put paper in the paper tray. Check that the paper is flat in the tray and below the maximum paper mark.



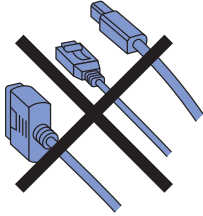
- 5 Put the paper tray firmly back in the printer.



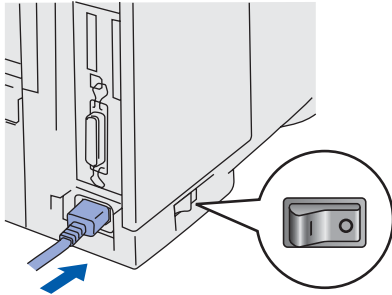


## 4 Print a Test Page

 Do NOT connect the interface cable. Connecting the interface cable is done when installing the driver.



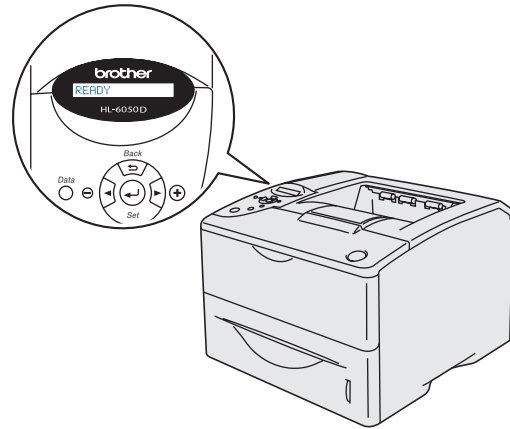
- 1 Make sure that the printer's power switch is off. Connect the AC power cord to the printer.



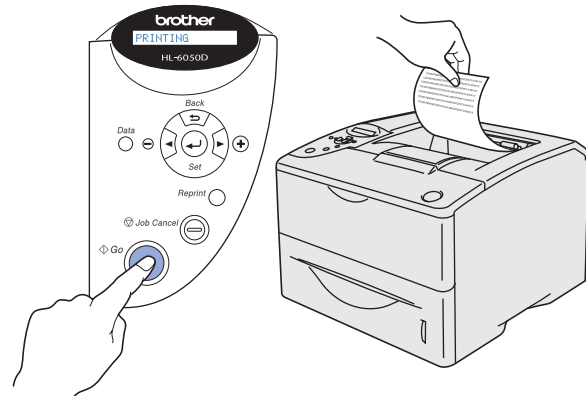
- 2 Plug the AC power cord into an AC power outlet/socket. Turn the printer's power switch on.



- 3 After the printer has finished warming up, the READY message appears.



- 4 Press the **Go** button. The printer prints a test page. Check that the test page has printed correctly.



Go to the next page 

Setting Up  
Your Printer

Windows®  
USB

Windows®  
Parallel

Windows®  
Network

Macintosh®  
USB

Macintosh®  
Network

For  
Administrators

Installing the Driver

## 5 Setting Your Language on the Control Panel



- 1 Press the **+** button until **SETUP** is displayed. Press the **Set** button.

SETUP

- 2 Press the **Set** button again.

LANGUAGE

- 3 Press the **+** or **-** button to select your language. Press the **Set** button to accept.

=ENGLISH

\*

Go to the next page  
to install the driver.



Follow the instructions on this page for your operating system and interface cable.  
The screens for Windows® in this Quick Setup Guide are based on Windows® XP and HL-6050DN.  
The screens for Mac OS® X in this Quick Setup Guide are based on Mac OS® X 10.1 and HL-6050DN.

Windows®



**For USB Interface Cable Users** ..... Go to page 13



**For Parallel Interface Cable Users**..... Go to page 15



**For Network Interface Cable Users (For HL-6050DN)**

- **Brother Peer-to-Peer Network Printer Users (LPR / NetBIOS)** ..... Go to page 17
- **Network Shared Printer Users**..... Go to page 19

Macintosh®



**For USB Interface Cable Users**

- **Mac OS® 8.6 to 9.2 Users** ..... Go to page 21
- **Mac OS® X 10.1 to 10.3 Users**..... Go to page 23



**For Network Interface Users (For HL-6050DN)**

- **Mac OS® 8.6 to 9.2 Users** ..... Go to page 25
- **Mac OS® X 10.1 to 10.3 Users**..... Go to page 26

**For Administrators** ..... Go to page 28

Windows®  
USB

Windows®  
Parallel

Windows®  
Network

Macintosh®  
USB

Macintosh®  
Network

For  
Administrators

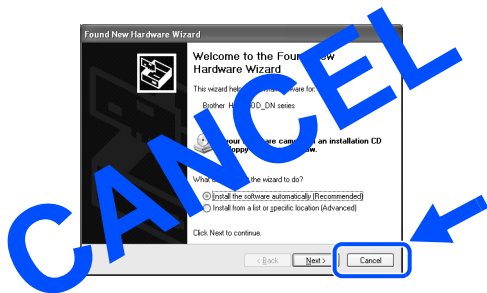


## For USB Interface Cable Users

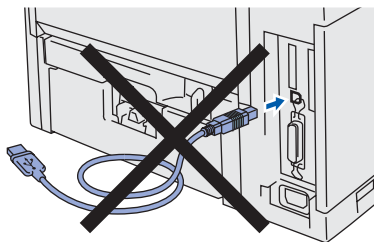
### 1. Installing the Driver and Connecting the Printer to Your PC



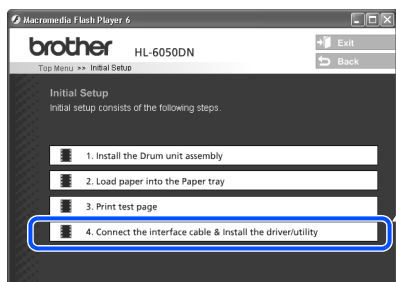
If the **Found New Hardware Wizard** appears on your PC, click the **Cancel** button.



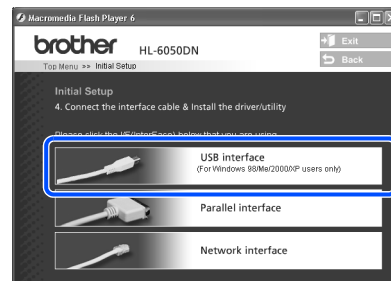
- 1 Make sure the USB interface cable is **NOT** connected to the printer, and then begin installing the driver. If you have already connected the cable, remove it.



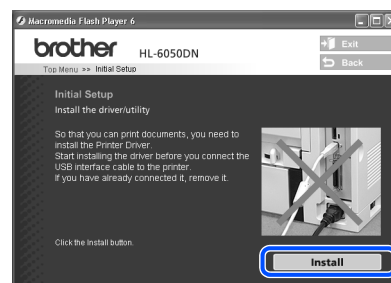
- 2 Click **Connect the interface cable & Install the driver/utility** from the **Initial Setup** menu.



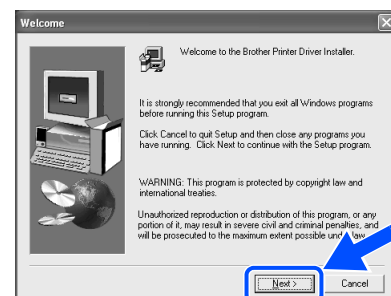
- 3 Select the **USB interface**.



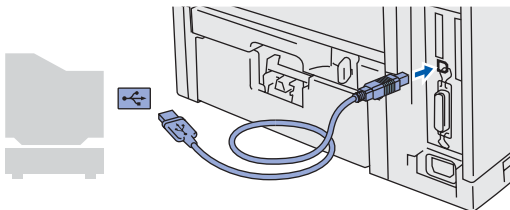
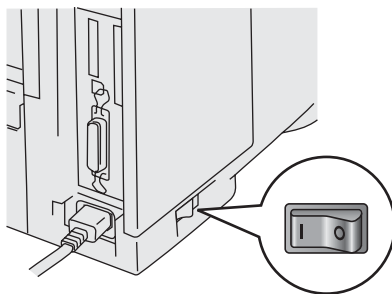
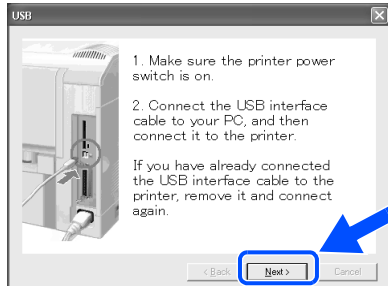
- 4 Click the **Install** button.



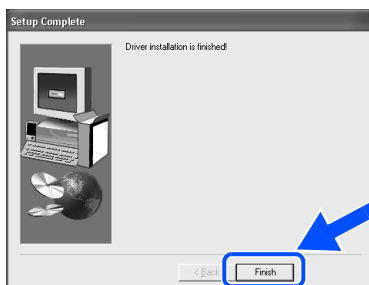
- 5 Click the **Next** button. Follow the on-screen instructions.



- 6 When this screen appears, make sure the printer's power switch is on. Connect the USB interface cable to your PC, and then connect it to the printer. Click the **Next** button.



- 7 Click the **Finish** button.



**OK!** For Windows® 98/Me users:  
Setup is now complete.

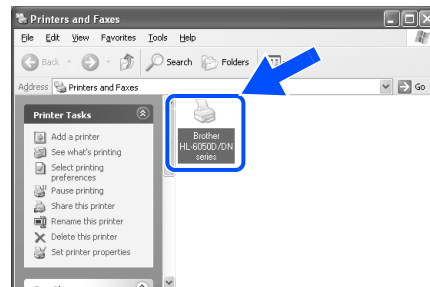
**▶▶** For Windows® 2000/XP users:  
Go to "2. Setting Your Printer as the Default Printer".

## 2. Setting your Printer as the Default Printer (For Windows® 2000/XP Users Only)

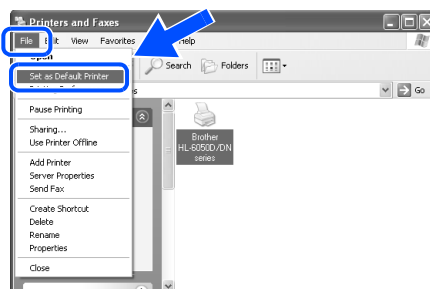
- 1 Click **Start** and then **Printers and Faxes**.



- 2 Select the **Brother HL-6050D/DN series** icon.



- 3 From the **File** menu, select **Set as Default printer**.



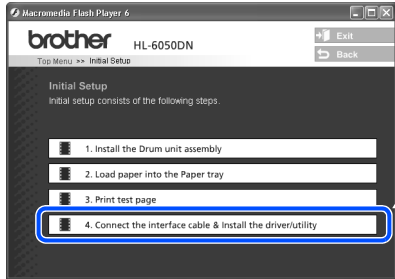
**OK!** Setup is now complete.



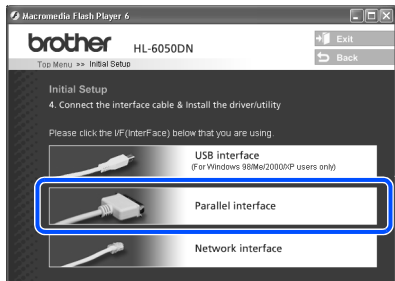
## For Parallel Interface Cable Users

### Connecting the Printer to Your PC and Installing the Driver

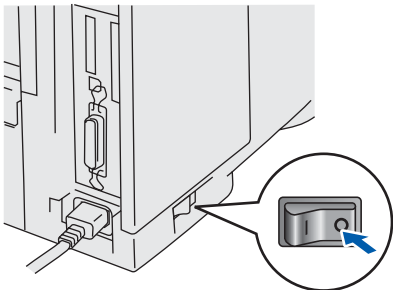
- 1 Click **Connect the interface cable & Install the driver/utility** from the **Initial Setup** menu.



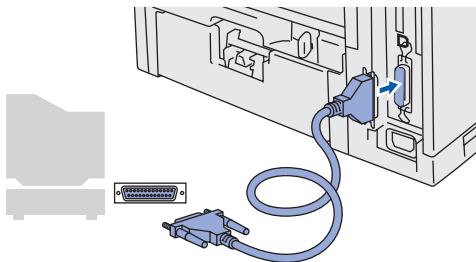
- 2 Select the **Parallel interface**.



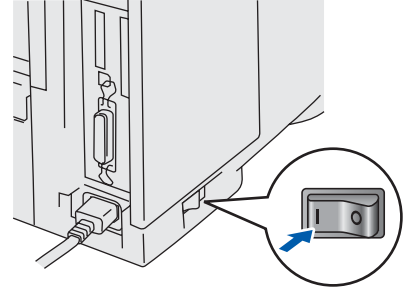
- 3 Turn off the printer's power switch.



- 4 Connect the parallel interface cable to your PC, and then connect it to your printer.



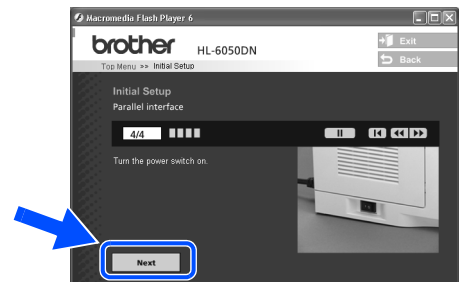
- 5 Turn on the printer's power switch.



If the **Found New Hardware Wizard** appears on your PC, click the **Cancel** button.



- 6 Click the **Next** button when the movie finishes.





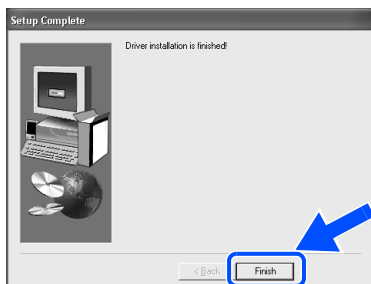
- 7 Click the **Install** button.



- 8 Click the **Next** button.  
Follow the on-screen instructions.



- 9 Click the **Finish** button.



- OK! **Setup is now complete.**

## For Network Interface Cable Users (For HL-6050DN)

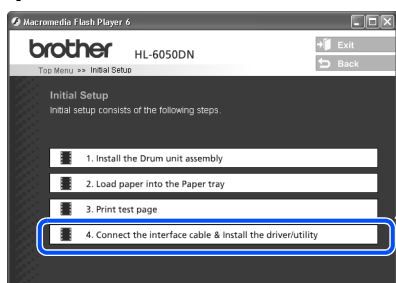
### For Brother Peer-to-Peer Network Printer Users (LPR / NetBIOS)



- If you are going to connect the printer to your network, we recommended that you contact your system administrator prior to installation.
- Before installation, if you are using Personal Firewall software (e.g. the Internet Connection Firewall available in Windows XP), disable it. Once you are sure that you can print, re-start your Personal Firewall software.

### Connecting the Printer to Your Network and Installing the Driver

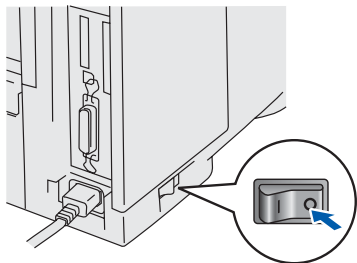
- 1 Click **Connect the interface cable & Install the driver/utility** from the **Initial Setup** menu.



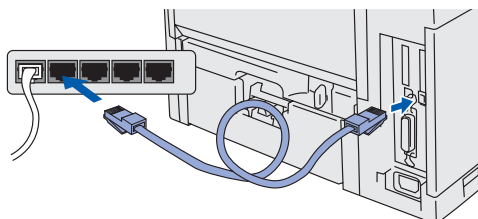
- 2 Select the **Network interface**.



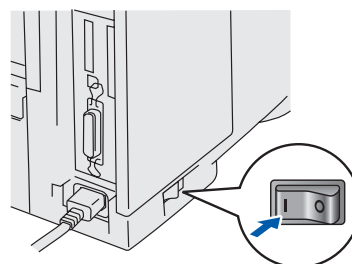
- 3 Turn off the printer's power switch.



- 4 Connect the network interface cable to the printer, and then connect it to a free port on your hub.



- 5 Turn on the printer's power switch.



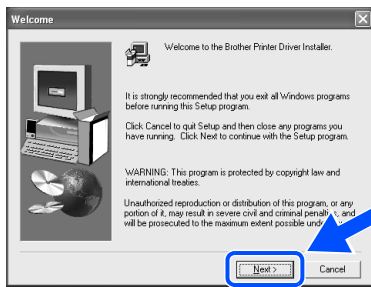
- 6 Click the **Next** button when the movie finishes.



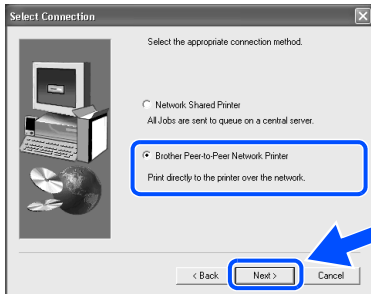
- 7 Click the **Install** button.



- 8 Click the **Next** button.  
Follow the on-screen instructions.

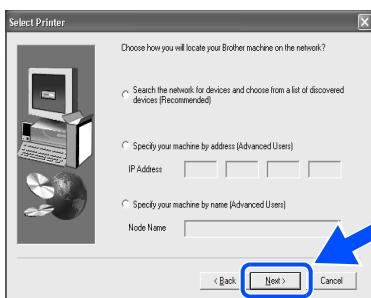



- 9 Select **Brother Peer-to-Peer Network Printer**, and then click the **Next** button.



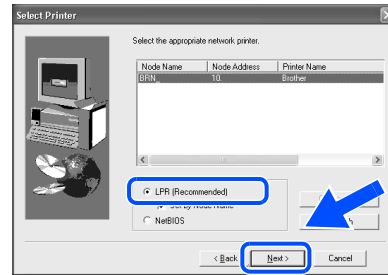
- 10 **For LPR Users:**  
Select **Search the network for devices and choose from a list of discovered devices (Recommended)**. Or enter your printer's IP address or its node name. Click the **Next** button.

**For NetBIOS Users:**  
Select **Search the network for devices and choose from a list of discovered devices (Recommended)**. Click the **Next** button.

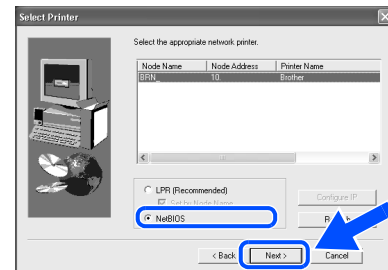


 Contact your Administrator about the printer's IP Address or node name.

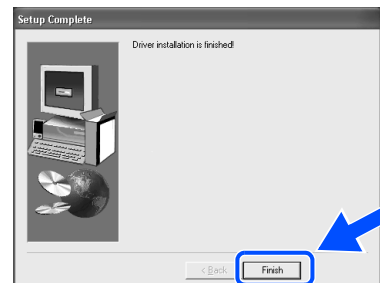
- 11 **For LPR Users:**  
Select your printer and **LPR (Recommended)**, and then click the **Next** button.



**For NetBIOS Users:**  
Select your printer and **NetBIOS**, and then click the **Next** button.



- 12 Click the **Finish** button.



**OK!** For Windows NT® 4.0 and Windows® 2000/XP users:  
Setup is now complete.

**OK!** For Windows® 95/98/Me users:  
After your PC has restarted, setup will be complete.

## For Network Interface Cable Users (For HL-6050DN)

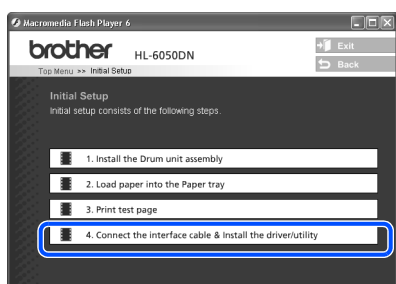
### For Network Shared Printer Users



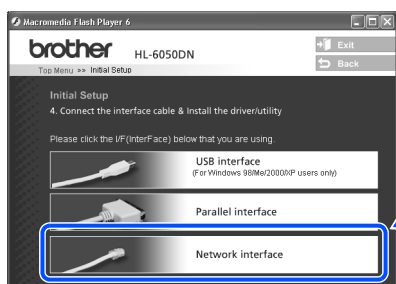
If you are going to connect the printer to your network, we recommended that you contact your system administrator prior to installation.

### Installing the Driver, Connecting the Cable and Selecting the Appropriate Printer Queue or Share name

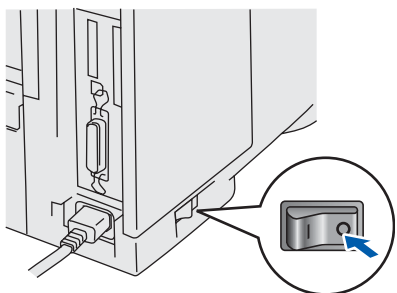
- 1 Click **Connect the interface cable & Install the driver/utility** from the **Initial Setup** menu.



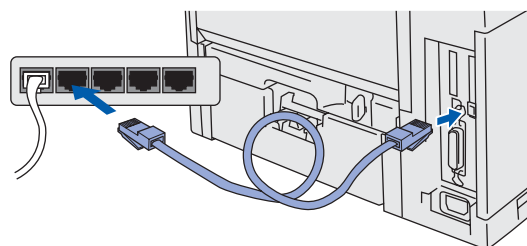
- 2 Select the **Network interface**.



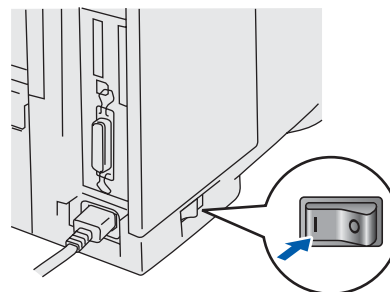
- 3 Turn off the printer's power switch.



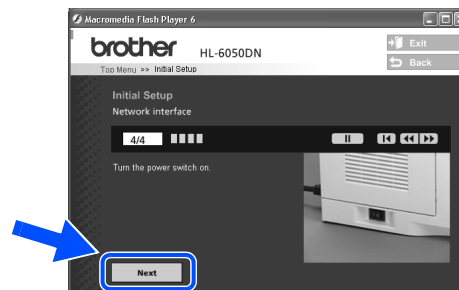
- 4 Connect the network interface cable to the printer, and then connect it to a free port on your hub.



- 5 Turn on the printer's power switch.



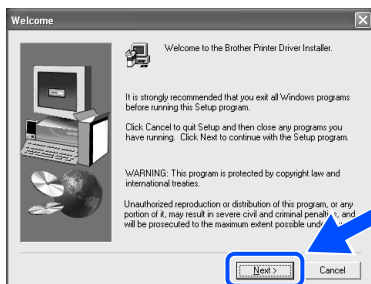
- 6 Click the **Next** button when the movie finishes.



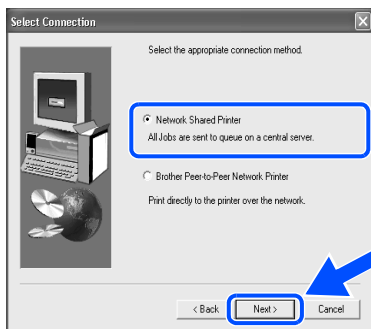
- 7 Click the **Install** button.



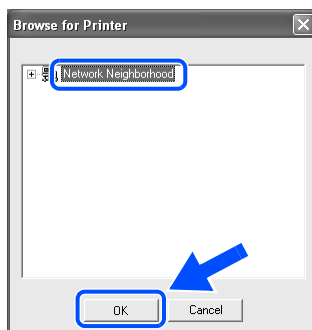
- 8 Click the **Next** button.  
Follow the on-screen instructions.




- 9 Select the **Network Shared Printer**, and then click the **Next** button.

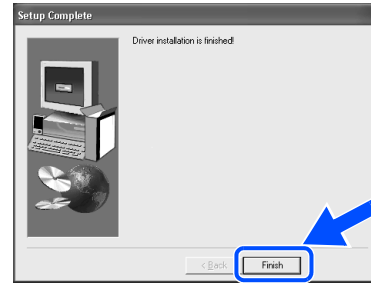


- 10 Select your printer's queue, and then click the **OK** button.



 Contact your Administrator about the printer's queue.

- 11 Click the **Finish** button.



- OK!** Setup is now complete.

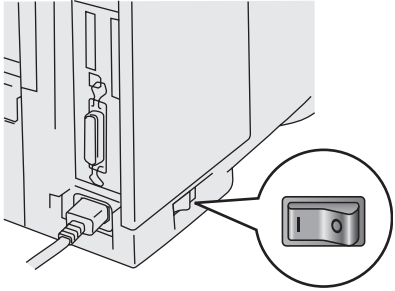


## For USB Interface Cable Users

### For Mac OS<sup>®</sup> 8.6 to 9.2 Users

#### 1. Connecting the Printer to your Macintosh<sup>®</sup> & Installing the PPD File

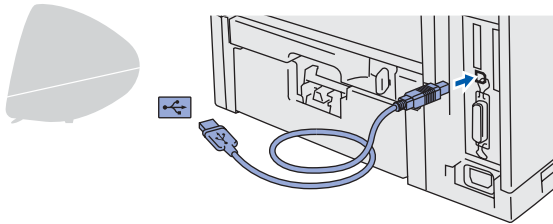
- 1 Make sure the printer's power switch is on.



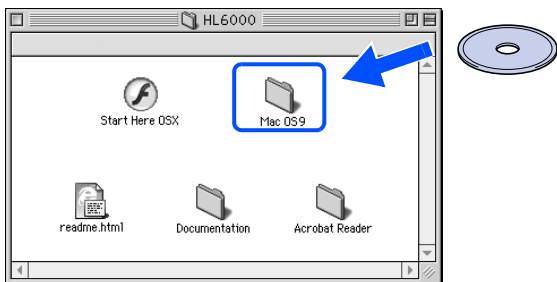
- 2 Connect the USB interface cable to your Macintosh<sup>®</sup>, and then connect it to the printer.



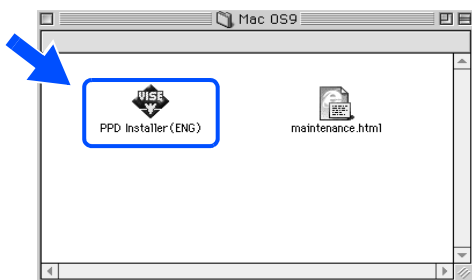
*Do not connect the USB cable to the keyboard USB Port or a non-powered USB Hub.*



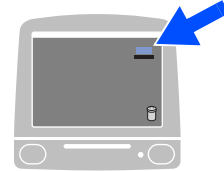
- 3 Insert the CD-ROM into your CD-ROM drive.  
Open the **Mac OS9** folder.



- 4 Double-click the **PPD installer** icon.  
Follow the on-screen instructions.

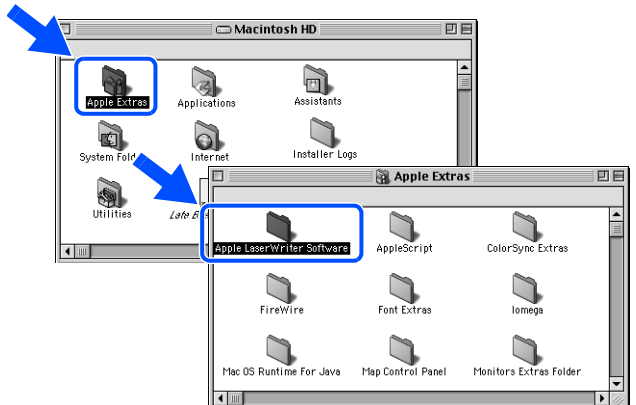


- 5 Open the **Macintosh HD** icon.



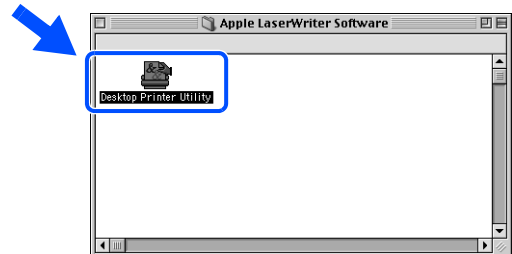
- 6 **For Mac OS<sup>®</sup> 8.6 to 9.04 Users:**  
Open the **Apple Extras** folder.  
Open the **Apple LaserWriter Software** folder.

**For Mac OS<sup>®</sup> 9.1 to 9.2 Users:**  
Open the **Applications** (Mac OS 9) folder.  
Open the **Utilities** folder.

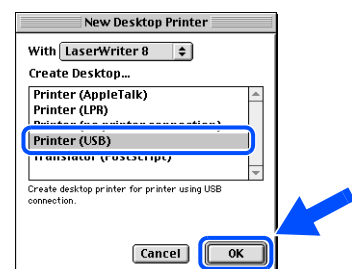


\* The screens are based on Mac OS<sup>®</sup> 9.04.

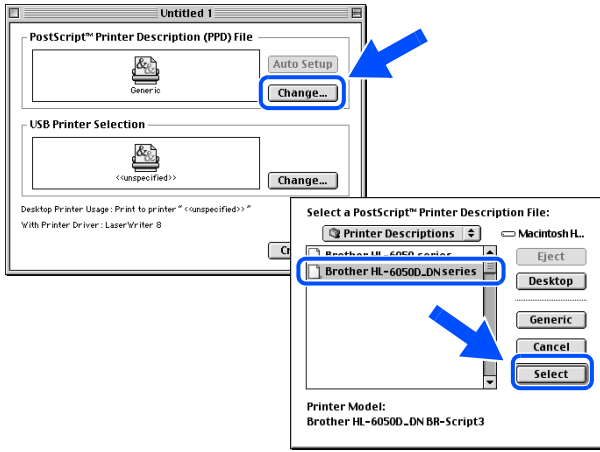
- 7 Open the **Desktop Printer Utility** icon.



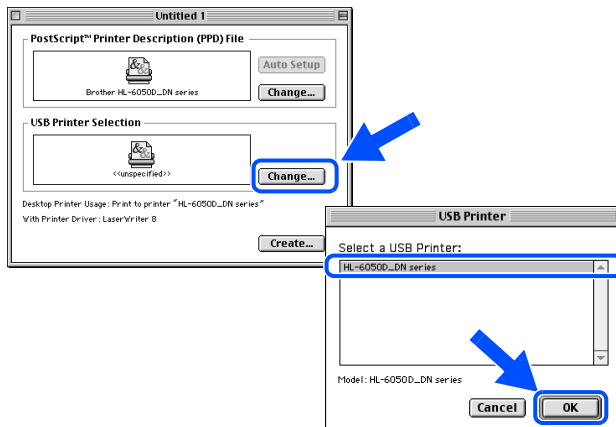
- 8 Select **Printer (USB)**, and then click the **OK** button.



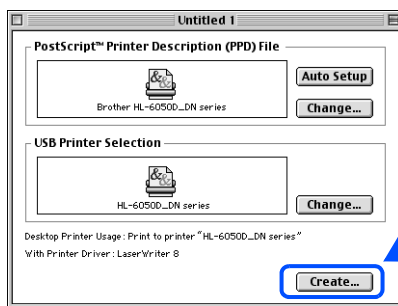
- 9 Click the **Change...** button in **PostScript™ Printer Description (PPD) file**. Select the appropriate printer, and then click the **Select** button.



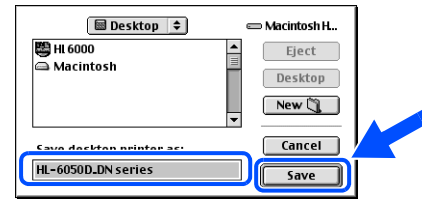
- 10 Click the **Change...** button in the **USB Printer Selection**. Select the appropriate printer, and then click the **OK** button.



- 11 Click the **Create...** button.



- 12 Enter your printer name (HL-6050D\_DN series), and then click the **Save** button.



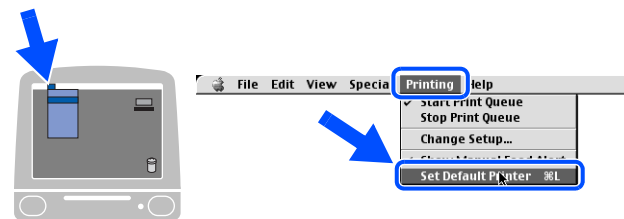
- 13 Select **Quit** from the **File** menu



- 14 Click the **HL-6050D\_DN series** icon on the Desktop.



- 15 From the Printing menu, select **Set Default Printer**.



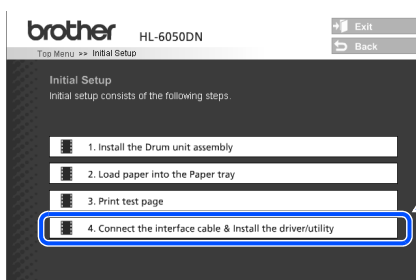
- OK! Setup is now complete.

## For USB Interface Cable Users

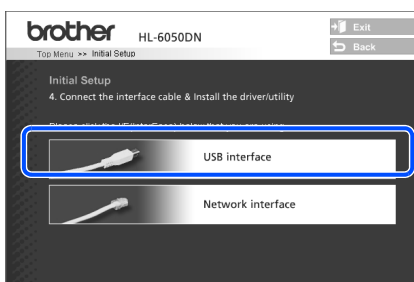
### For Mac OS<sup>®</sup> X 10.1 to 10.3 Users

#### Connecting the Printer to your Macintosh<sup>®</sup> & Installing the PPD File

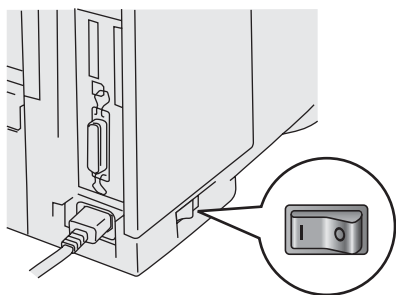
- 1 Click **Connect the interface cable & Install the driver/utility** from the **Initial Setup** menu.



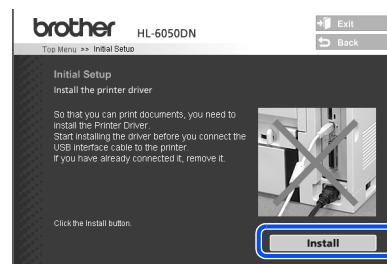
*If this screen appears, select the **USB interface**.*



- 2 Make sure the printer's power switch is on.

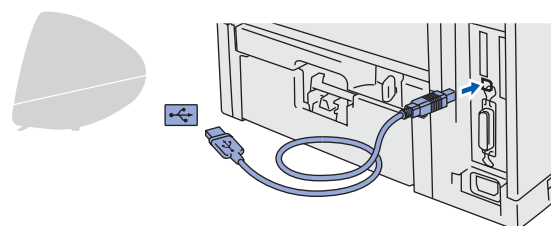


- 3 Click the **Install** button and follow the on-screen instructions.

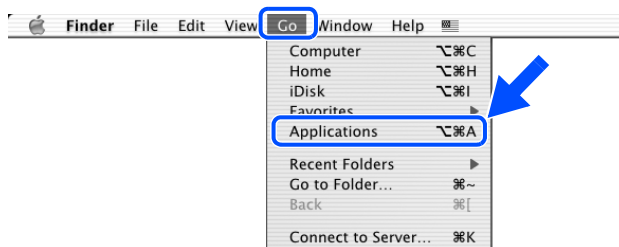


- 4 Connect the USB interface cable to your Macintosh<sup>®</sup>, and then connect it to the printer.

*Do not connect the USB cable to the keyboard USB Port or to a non-powered USB Hub.*

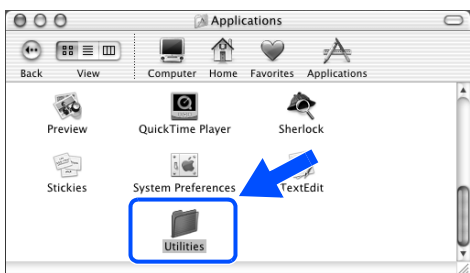


- 5 From the **Go** menu, select **Applications**.

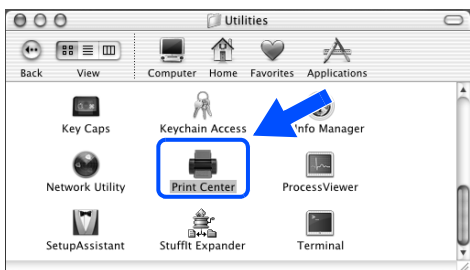




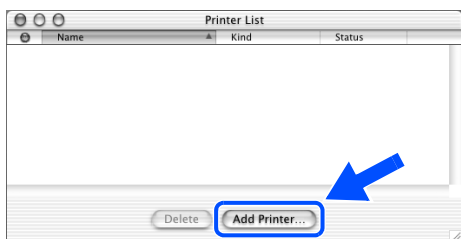
6 Open the **Utilities** folder.



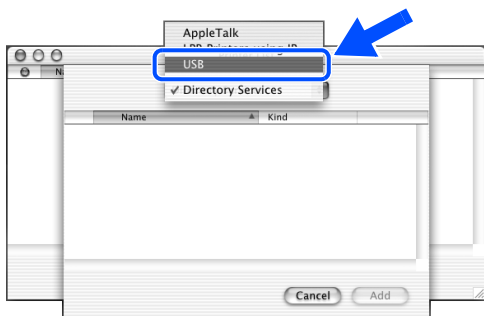
7 Open the **Print Center** icon.



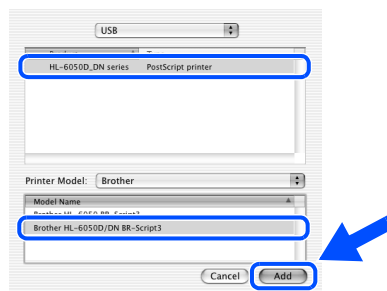
8 Click the **Add Printer...** button.



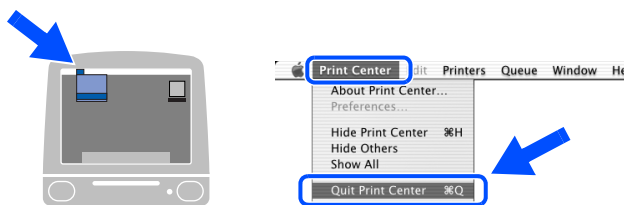
10 Select **USB**.



11 Select the appropriate printer, and then click the **Add** button.



12 From the **Print Center** menu, select **Quit Print Center**.



OK! Setup is now complete.

## For Network Interface Cable Users (For HL-6050DN)

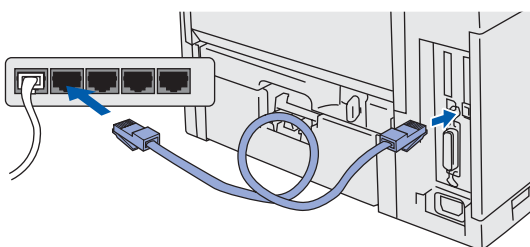
### For Mac OS<sup>®</sup> 8.6 to 9.2 Users

#### Connecting the Printer to your Macintosh<sup>®</sup> & Installing the PPD File

- 1 Turn off the printer's power switch.



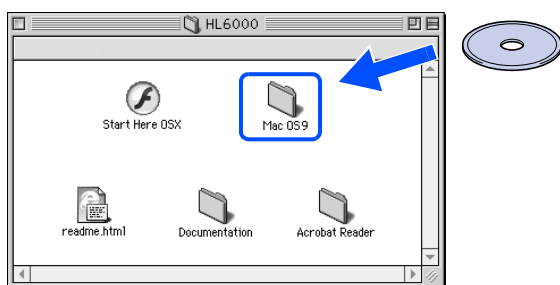
- 2 Connect the network interface cable to the printer, and then connect it to a free port on your hub.



- 3 Turn on the printer's power switch.



- 4 Insert the CD-ROM for Macintosh<sup>®</sup> into your CD-ROM drive. Open the **Mac OS9** folder. Open your language folder.



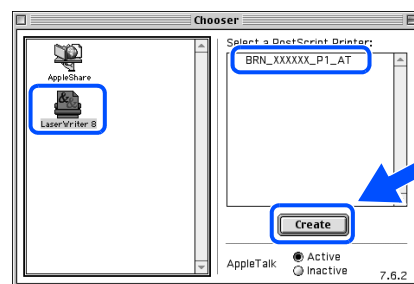
- 5 Double-click the **PPD Installer** icon to install the PPD file. Follow the on-screen instructions.



- 6 From the **Apple** menu, open the **Chooser**.



- 7 Click the **LaserWriter 8** <sup>\*1</sup> icon, and then select **BRN\_xxxxxx\_P1\_AT**. <sup>\*2</sup> Click the **Create** button. Close the **Chooser**.



*\*1 If the Apple LaserWriter 8 Driver is not already installed on your system, you can download it from <http://www.apple.com>*

*\*2 xxxxxx are the last six digits of the Ethernet address.*



*Network User's Guide Chapter 7.*

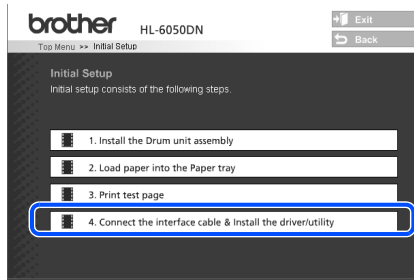
**OK!** Setup is now complete.

## For Network Interface Cable Users (For HL-6050DN)

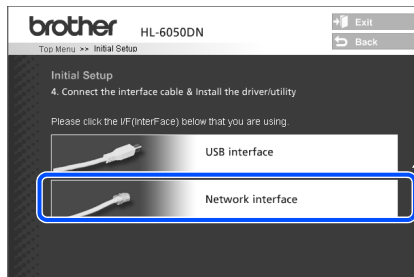
### For Mac OS® X 10.1 to 10.3 Users

#### Connecting the Printer to your Macintosh® & Installing the PPD File

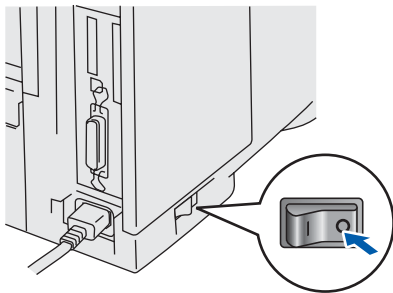
- 1 Click **Connect the interface cable & Install the driver/utility** from the **Initial Setup** menu.



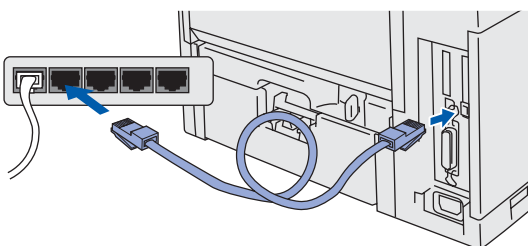
- 2 Select the **Network interface**.



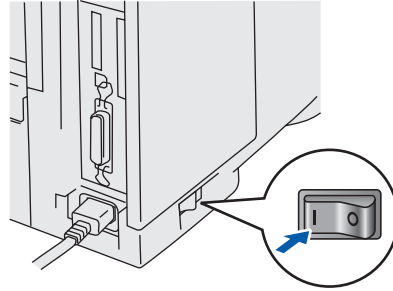
- 3 Turn off the printer's power switch.



- 4 Connect the network interface cable to the printer, and then connect it to a free port on your hub.



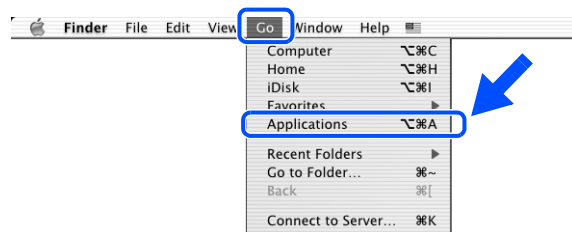
- 5 Turn on the printer's power switch.



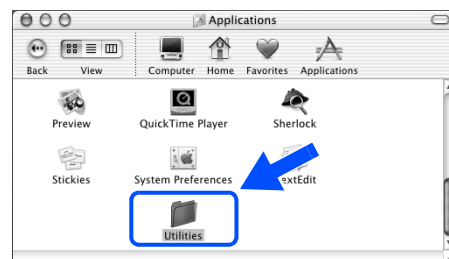
- 6 Click the **Install** button and follow the on-screen instructions.



- 7 From the **Go** menu, select **Applications**.



- 8 Open the **Utilities** folder.

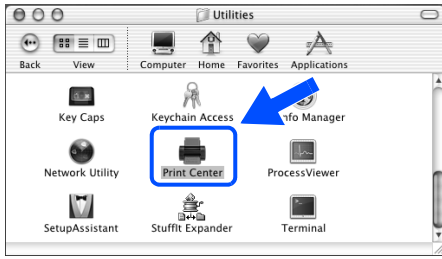


Continue to  
the next page

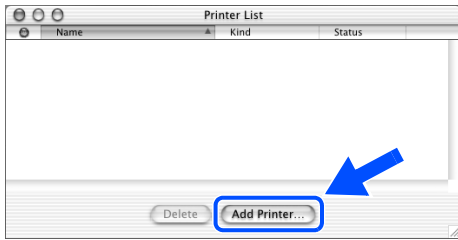
# Step 2

## For Network Interface Cable Users (For HL-6050DN)

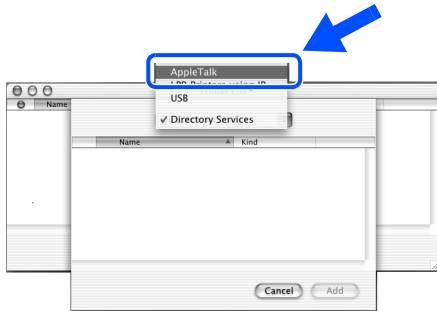
9 Open the **Print Center** icon.



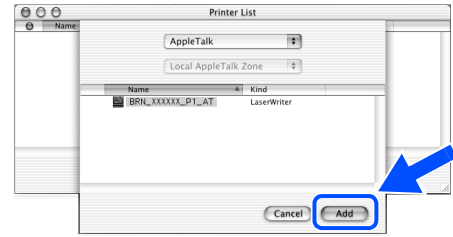
10 Click the **Add Printer...** button.



11 Select **AppleTalk**.



12 Select **BRN\_XXXXXX\_P1\_AT**<sup>\*1</sup>, and then click the **Add** button.

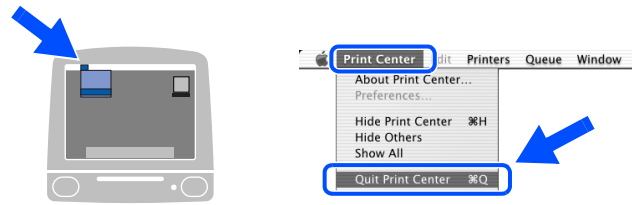


\*1 xxxxxx are the last six digits of the Ethernet address.



Network User's Guide Chapter 7.

13 From the **Print Center** menu, select **Quit Print Center**.



**OK!** Setup is now complete.

**For Mac OS® X 10.2.4 or greater Users:**  
If you want to connect your printer using the Simple Network Configuration capabilities of Apple® Mac OS® X, select Rendezvous and then the **Brother HL-6050D\_DN series**.

→Go to 13



If there is more than one of the same model printer (HL6050DN) connected on your network, the Ethernet address (MAC address) will be displayed after the model name.

# ■ For Administrators (HL-6050DN)

## Installing the BRAdmin Professional utility (Windows® Users Only)

The BRAdmin Professional utility is designed to manage your Brother network-connected devices.

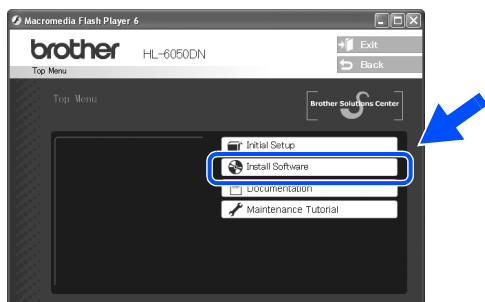
BRAdmin Professional utility can also be used to manage devices from other manufacturers whose products support SNMP (Simple Network Management Protocol).

For more information on BRAdmin Professional go to <http://solutions.brother.com>

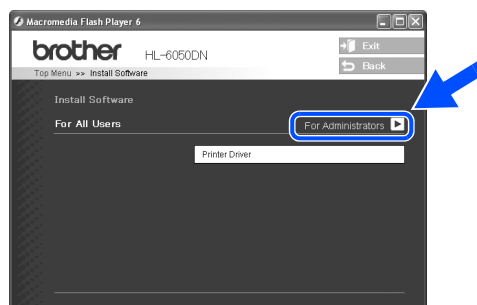
- 1 Insert the CD-ROM into your CD-ROM drive. The opening screen will appear automatically. Follow the on-screen instructions.



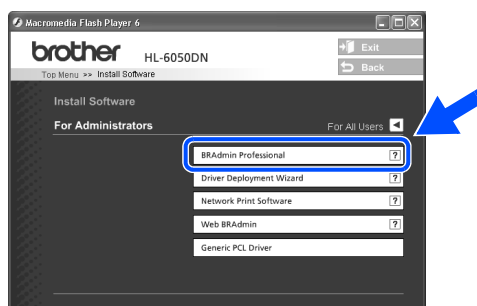
- 2 Click the **Install Software** icon on the menu screen.



- 3 Click **For Administrators**.



- 4 Click **BRAdmin Professional**.



The default password for the print server is 'access'. You can use the BRAdmin Professional utility or a web browser to change this password.

## Web BRAdmin (Windows® Users Only)

Brother has also developed Web BRAdmin, an enterprise network software utility that enables the management of Brother and other SNMP-compliant devices in larger LAN/WAN environments.

This software is Web server based and requires the installation of Microsoft's Internet Information Server and Sun's Java client software. To learn more about the Web BRAdmin software or to download it, please go to <http://solutions.brother.com/webbradmin>

Setting Up  
Your Printer

Windows®  
USB

Windows®  
Parallel

Installing the Driver

Windows®  
Network

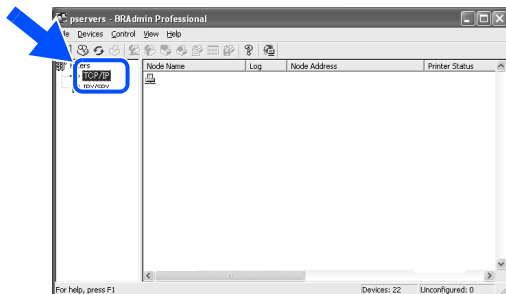
Macintosh®  
USB

Macintosh®  
Network

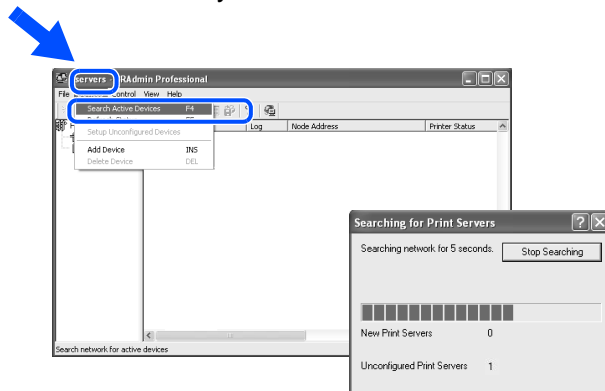
For  
Administrators

## Setting your IP Address, Subnet Mask and Gateway using BRAdmin Professional utility (Windows® Users Only)

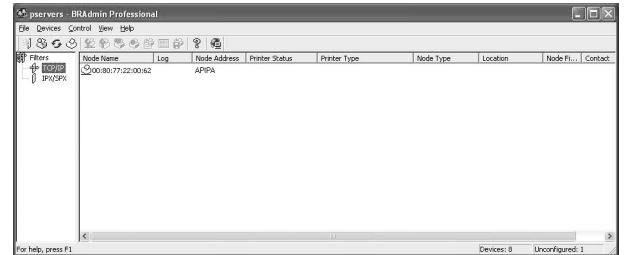
- 1 Start BRAdmin Professional, and select **TCP/IP**.



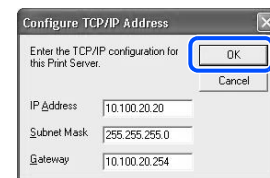
- 2 Select **Search Active Devices** from the **Devices** menu. BRAdmin will search for new devices automatically.



- 3 Double-click the new device.



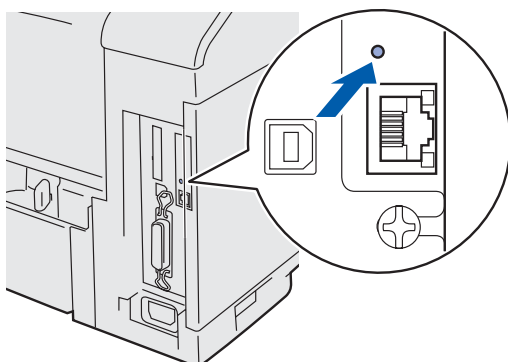
- 4 Enter the **IP Address**, **Subnet Mask** and **Gateway**, and then click the **OK** button.



- 5 The address information will be saved to the printer.

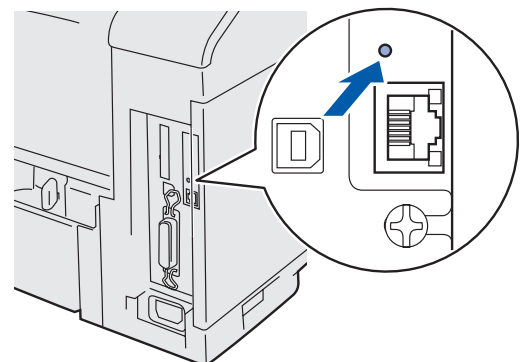
## Print Printer Settings Page

To print the Printer Settings Page, use a fine ball point pen to hold down the Network Test Button for **less** than 5 seconds.



## Factory Default Setting

If you wish to reset the print server back to its default factory settings (resetting all information such as the password and IP address information), use a fine ball point pen to hold down the Network Test Button for **more** than 5 seconds.



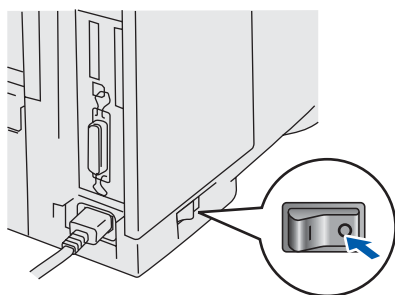
## Shipment of the Printer

If for any reason you must ship your Printer, carefully package the Printer in the original packing to avoid any damage during transit. It is strongly recommended that you save and use the original packaging. The Printer should also be adequately insured with the carrier.

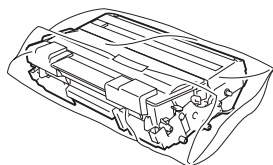


**When shipping the Printer, the DRUM UNIT assembly and TONER CARTRIDGE must be removed from the Printer and placed in the plastic bag. Failure to remove the unit and place it in the plastic bag during shipping will cause severe damage to the Printer and may VOID THE WARRANTY.**

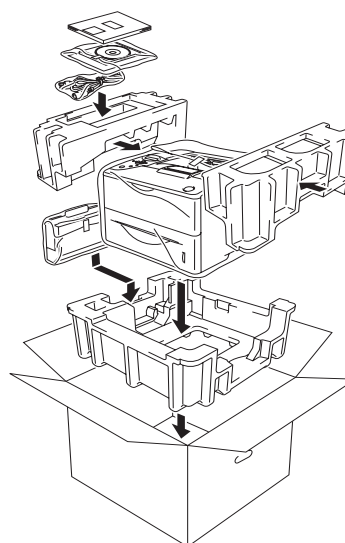
- 1 Turn off the printer's power switch, and then unplug the AC power cord.



- 2 Remove the drum unit assembly. Place it in the plastic bag and seal the bag completely.



- 3 Re-pack the printer.



### Trademarks

The Brother logo is a registered trademark of Brother Industries, Ltd.

Windows® and Windows NT® are registered trademarks of Microsoft Corporation in the U.S and other countries.

Apple Macintosh®, iMac, LaserWriter, and AppleTalk are trademarks of Apple Computer, Inc.

HP, HP/UX, JetDirect and JetAdmin are trademarks of Hewlett-Packard Company.

UNIX is a trademark of UNIX Systems Laboratories.

Adobe PostScript® and PostScript3™ are trademarks of Adobe Systems Incorporated.

Netware is a trademark of Novell, Inc.

ENERGY STAR is a U.S. registered mark.

All other brand and product names mentioned in this User's Guide are registered

### Compilation and Publication

Under the supervision of Brother Industries Ltd., this manual has been compiled and published, covering the latest product descriptions and specifications.

The contents of this manual and the specifications of this product are subject to change without notice.

Brother reserves the right to make changes without notice in the specifications and materials contained herein and shall not be responsible for any damages (including consequential) caused by reliance on the materials presented, including but not limited to typographical and other errors relating to the publication.

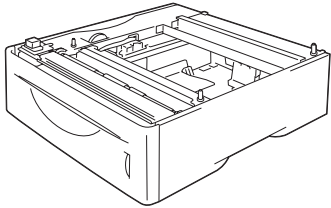
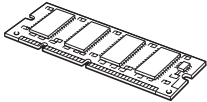
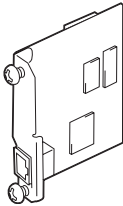
This product is designed for use in a Professional Environment.

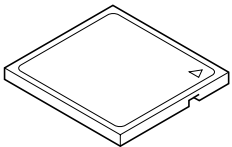
## Options

The printer has the following optional accessories. You can expand the capabilities of the printer by adding these items.



*User's Guide Chapter 4.*

| Lower Tray Unit  | DIMM Memory  | Network Board<br>(For HL-6050D)  |
|--|--|--|
| <p align="center"><b>LT-6000</b></p>   |  | <p align="center"><b>NC-6100h</b></p>  |
|  <p>Second lower paper tray unit expands total input capacity up to 500 sheets.</p> |  <p>You can expand the memory by installing (100-pin DIMM) memory module.</p> |  <p>If you are going to connect the printer to your network, purchase the optional Network board.</p> |

| CompactFlash™ Card  |
|---|
|  <p>The printer accepts a CompactFlash™ card for saving macros, print jobs, fonts and print logs. IBM Microdrive™ is not compatible.</p> |