

EN Foil Transfer Starter Kit

■ About the Foil Transfer Starter Kit

You can create high-quality drawings by using the pressing tool to apply foil with your cutting machine.

■ Important and safety instructions



Warning

CHOKING HAZARD.

This product contains many small parts. This product is not intended for use by children of any age. Keep product out of the reach of children or else choking or other injury may result.



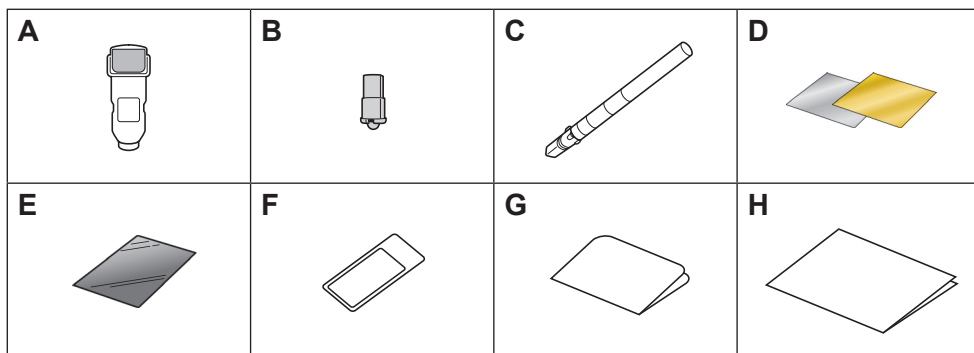
Caution

- Do not put the foil transfer sheet or glue pen in your mouth as choking or injury may result.
-

■ Precautions

- Do not insert any object other than the glue pen or pressing tool into the glue pen holder.
- Use paper with a smooth surface. Foil cannot be applied to material that is very absorbent, such as fabric, or has an extremely rough surface or a coated surface.
- When applying foil, only use paper with a thickness of 0.5 mm or less.
- If the adhesive strength of the dust removal sheet has decreased, lightly wipe the sheet with a wet wipe, to remove any dust or dirt. After wiping the sheet, be sure to allow it to dry.
- If the excess foil can no longer be attached to the dust removal sheet, replace the sheet with a new one.
- Do not fold or bend the protective sheet.
- If the protective sheet becomes dirty or damaged, replace it with a new one, otherwise foil may not be correctly applied.
- Do not store the glue pen, foil transfer sheet or dust removal sheet in a location exposed to direct sunlight, high temperatures or high humidity. In addition, be sure to place the cap on the glue pen after using it.
- Use in an environment between 5 °C and 35 °C (41 °F and 95 °F).
- The 12" × 24" (305 mm × 610 mm) cutting mat cannot be used.
- For detailed instructions on using the cutting machine, refer to the Operation Manual.
- The contents of this document are subject to change without notice.
- This instruction guide provides descriptions for using the computer version of the application.

■ Accessories




Name	
A	Glue pen holder
B	Pressing tool
C	Glue pen ^{**1}
D	Foil transfer sheets 3.9" × 7.8" (100 mm × 200 mm) (gold and silver) ^{**1}
E	Protective sheet 8.6" × 12" (220 mm × 305 mm) ^{**1}
F	Dust removal sheet 1.9" × 2.9" (50 mm × 75 mm) (with storage sheet) ^{**1}
G	Activation code for ScanNCutCanvas Foiling function (on card)
H	Instruction guide for ScanNCut users

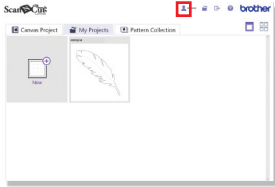
*1 These accessories are consumables. After you have used them all, purchase CAFTGP1 (glue pen for foil transfer starter kit), CAFTSGLD1 (foil transfer sheet gold) or CAFTSSIL1 (foil transfer sheet silver). To replace the dust removal sheet, purchase CASTPS1 (stamp sheets). To replace the protective sheet, purchase CAEBSTS1 (embossing template sheet). To purchase options, contact the retailer where this kit was purchased.

■ Editing a foiling pattern from the ScanNCutCanvas Web application

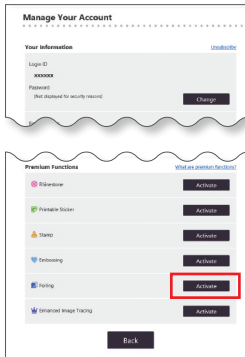
ScanNCutCanvas has a large variety of foiling patterns that can be used immediately.

○ Activating the Foiling function

1. Log in to ScanNCutCanvas.
(<https://scanncutcanvas.brother.com/>).
 - First-time users should create a free ScanNCutCanvas account.
2. Click  in the upper-right corner of the Web page.




3. Click the <Activate> button for “Foiling”.



4. Type in the activation code on the included activation code card, and then click the <Activate> button.
 - The uppercase letters “I” and “O” are not used in the activation code.
 - The activation code is valid for only one login ID for ScanNCutCanvas. The same activation code cannot be used again.
- Activation is completed.



○ Using the Foiling function

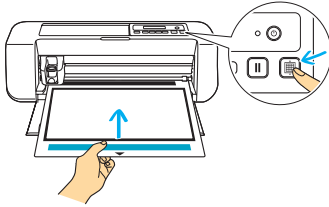
After activating the Foiling function, a pattern category for foiling is added to ScanNCutCanvas. For details on using the patterns, refer to the “Help” by clicking .



○ How to activate the Foiling function on DesignNCut Manager

1. In the main window of DesignNCut Manager, click [DesignNCut], then [Settings].
2. Click [Operation], and then select the [Kit Activation] check box.

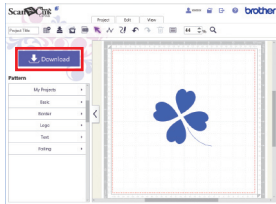
1



Attach the material (to which the foil is to be applied) to the low tack adhesive mat, and then load the mat.

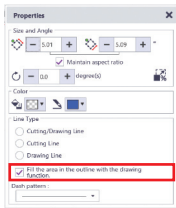
- If a standard mat is used, the material may be damaged when it is peeled off.
- Attach the material so it does not extend from the attaching area of the cutting mat.

2

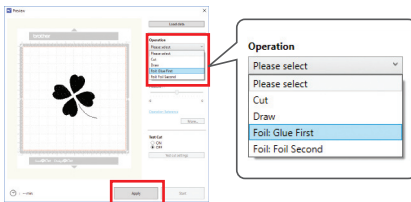


Select a foiling pattern and adjust the position of the pattern and/or the pattern size in ScanNCutCanvas based on the material size and its position on the mat, then download it by clicking <Download>. Click <DesignNCut Transfer> to transfer the pattern to DesignNCut.

- Good foiling results may be difficult to achieve with extremely small or complicated patterns.
- **Make sure that the pattern is smaller than the foil (3.9" × 7.8" (100 mm × 200 mm)).**
- To fill in the pattern, select the <Fill the area in the outline with the drawing.> check box in the <Properties> dialog box in ScanNCutCanvas.

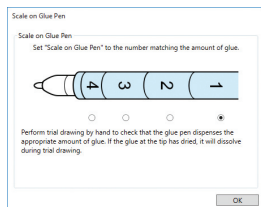


3



In DesignNCut Manager, click [Load data] to load the edited pattern, then select [Foil: Glue First] operation mode and click [Apply].

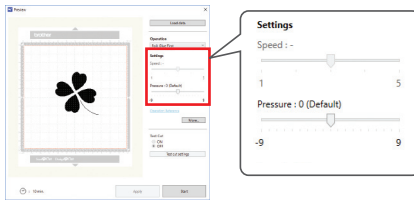
4



A window to set [Scale on Glue Pen] appears. Check the amount of glue remaining in the pen and set [Scale on Glue Pen] to the number matching the amount of remaining glue and click [OK].

- **Before using the glue pen, make sure that the resin ball is removed from the tip of the glue pen.**

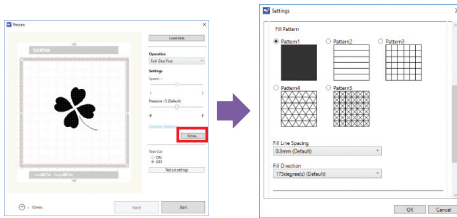
5



Drag the [Pressure] slider to select the gluing pressure.

- Pressure setting: 0
- The paper may tear if the gluing pressure is too strong. Before using thin paper, decrease the pressure.
- The appropriate gluing pressure differs depending on the material.

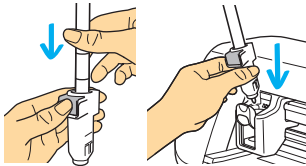
6



Click the [More...] to display the fill settings screen. If you decided not to fill the pattern, continue with step 7.

- We recommend fill pattern [Pattern1].
- We recommend the default settings for the fill line spacing.
- When applying glue only to lines, adjust the setting for [Additional Line] to increase the thickness of the glue lines. We recommend the default settings for the additional line pitch. For details on specifying the settings, refer to "Using Drawing Functions to Fill Patterns/Make Outlines Thicker" in the Operation Manual of your machine.

7

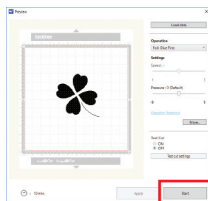


Press the metal tab on the glue pen holder, and then insert the glue pen with its cap removed. Release the tab after the glue pen snaps into place so that the pen is secured. If you do not hear a click sound, the pen is not in the holder properly.

Gently lift the pen up and down in the holder to ensure it is secure.

- Before inserting the glue pen, make sure that the pressing tool is not attached to the glue pen holder.
- Be careful not to lose the removed pressing tool.
- Perform trial drawing by hand to check that the glue pen dispenses the appropriate amount of glue. If the glue at the tip has dried, it will dissolve during trial drawing.
- Immediately begin applying the glue.

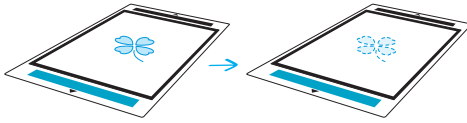
8



Click [Start] to start applying glue.

- If the "Scale on Glue Pen" setting value is large, the pen may move slowly and produce an unusual, loud operating sound.
- While glue is being applied, do not pause the operation or change any settings, such as the amount of glue remaining in pen. Otherwise, thicker lines may be produced.

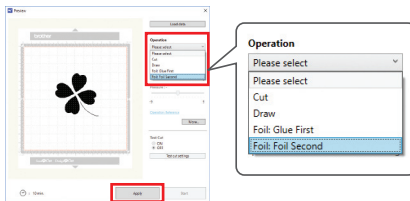
9



After the glue has been applied, feed the mat out of the machine, and then allow the glue to dry.

- **Allow the glue to dry until it becomes transparent/clear. Correct foiling results cannot be achieved if the glue remains opaque.**
- Do not turn off the machine. Otherwise, the foiling position may become misaligned.
- Do not touch the glue surface. Otherwise, its adhesive strength will decrease, and the foil may not adhere.
- If no glue is applied, go back to DesignNCut Manager and repeat step 8 through 9.
- After applying glue, remove the pen from the holder, and then attach the cap to the pen.

10



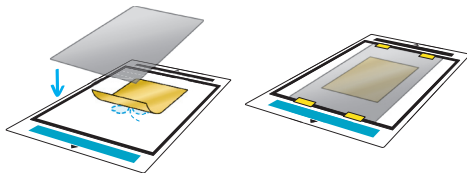
Select [Foil: Foil Second] in DesignNCut Manager and click [Apply].

11



Remove the glue pen holder from the carriage, and then remove the glue pen. Attach the pressing tool to the tip of the glue pen holder, and then insert the holder into the carriage.

12

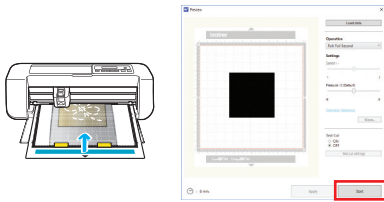


Place the foil on top of the pattern where the glue has been applied.

Place the protective sheet on the mat to cover the foil, and then secure it in place with commercially available tape, etc.

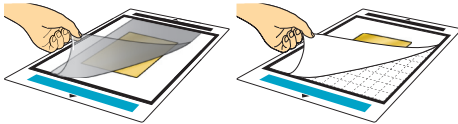
- **Gently place the foil over the glue area with its colored/shinier side facing up.**
- Carefully position the foil so there are no wrinkles. The foil may tear if you try to press out the wrinkles after positioning the foil.
- Be sure to use the protective sheet to prevent damage to the foil. Before positioning the protective sheet, make sure there is no dust between it and the foil.
- If the protective sheet is not firmly attached when the mat is fed in, the machine may be damaged. Be sure to secure the protective sheet to the mat with commercially available tape, etc.
- Attach the protective sheet so it does not extend from the attaching area of the cutting mat.

13



Insert the mat in the same direction as when glue was being applied, and then click [Start] to apply the foil.

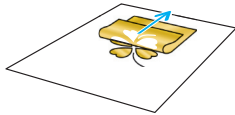
14



Feed out the mat, and then peel off the protective sheet and then carefully peel off the material from the mat.

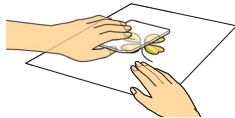
- While peeling off the foil transfer sheet, check that the foil adheres.
- If the foil does not fully adhere, instead of fully peeling off the foil transfer sheet, return it to its previous position, cover it again with the protective sheet, and then rub over the top of the sheet with a hard object.

15



Place the material on a level surface, and then slowly peel off the foil transfer sheet horizontally to the material.

16



Repeatedly dab the top of the foil with the dust removal sheet to remove any excess foil.

- Do not rub the foil with the dust removal sheet, otherwise the foil may become damaged.
- For storage, attach the dust removal sheet to its storage sheet in order to prevent it from being lost.

Troubleshooting

- If too much or too little glue was applied, click [More...] in DesignNcut Manager and, change the setting for [Glue Amount Adjustment].
- If the line is too thick, decrease the setting for [Glue Amount Adjustment]. If the line is too faint, increase the setting.
- If the glue tracks are visible or the glue lines are too thick, reduce the pressure setting during [Foil: Glue First] operation by dragging the [Pressure] slider.
- If the foil does not adhere at all, the foil transfer sheet may have been positioned upside down.
- If the foil does not adhere adjust the pressure during [Foil: Foil Second] operation by dragging the [Pressure] slider.