

RJ-3150
User's Guide
English

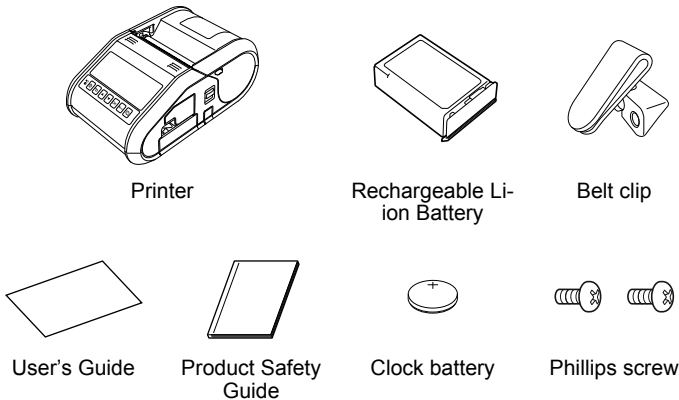
Thank you for purchasing the Brother RJ-3150 mobile printer. Read the included User's Guide and Product Safety Guide, before using the printer. For detailed operation instructions, see the Online User's Guide (Brother Solutions Center at <http://support.brother.com/>). We suggest that you keep these documents in a handy place for future reference. To download the latest manuals, please visit the Brother Solutions Center (<http://support.brother.com/>), where you can also download the latest drivers and utilities for your printer, read FAQs and troubleshooting tips or learn about special printing solutions.

Printed in China
LBD537001

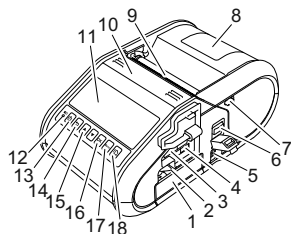


Unpacking the RJ-3150

Check that the package contains the following before using the printer.



General Description

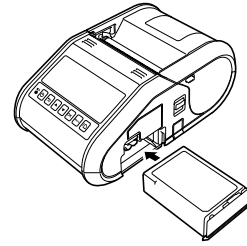


- | | |
|-----------------------------|---|
| 1 Battery compartment | 11 LCD |
| 2 Battery latch | 12 BATT (Battery) indicator |
| 3 USB host port | 13 ⏻ (Power) button
(To turn the printer on/off) |
| 4 Mini-USB port | 14 CANCEL button |
| 5 DC connector | 15 Cursor button (UP/DOWN) |
| 6 Cover open lever | 16 OK button |
| 7 Peeler latch | 17 Menu button |
| 8 RD Roll compartment cover | 18 ⏴ (Feed) button
(To feed the paper or print the printer settings) |
| 9 Paper outlet | |
| 10 Label peeler | |

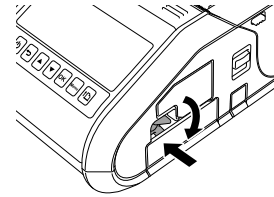
Using the Rechargeable Li-ion Battery

Installing the Rechargeable Li-ion Battery

1. Make sure that the battery latch is lifted up, and then insert the battery into the battery compartment with the battery cover attached to the battery. Make sure that the terminal end of the battery is facing inward.



2. With the battery inserted and while pushing the battery lightly into the cavity, lower the battery latch until it clicks locking the battery in place.



Removing the Rechargeable Li-ion Battery

While pushing the battery lightly, lift the battery latch to unlock the battery, and then remove the battery.

Turning the Printer On or Off

On: Press and hold the ⏻ (Power) button until the LCD display turns on.
Off: Press and hold the ⏻ (Power) button until the message "System Off" is displayed on the LCD display.

NOTE

Do NOT remove the battery or power to turn off the printer until the LCD display turns off.

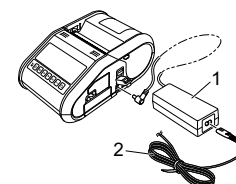
Recharging the Li-ion Battery

1. Make sure that the rechargeable Li-ion battery is installed in the printer.
2. Use the AC adapter and AC power cord to connect the printer to an AC power socket (see Connecting to an AC Power Outlet (Optional)), or use the car adapter to connect the printer to a DC power socket (see Connecting to a DC Power Outlet (Optional)).
3. The battery indicator light is orange when the battery is charging. When the rechargeable Li-ion battery is fully charged, the battery indicator light turns off. Disconnect the AC adapter or car adapter from the battery's DC connector.
For details, see the Online User's Guide.

Connecting to an AC Power Socket (Optional)

Connect the printer to a nearby AC power socket to charge the rechargeable battery.

1. Connect the AC adapter to the printer.
2. Connect the AC power cord to the AC adapter.
3. Connect the AC power cord to a nearby AC power socket (100 - 240 VAC, 50 - 60 Hz).

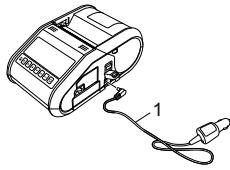


- 1 AC adapter
2 AC power cord

Connecting to a DC Power Socket (Optional)

Connect the printer to your vehicle's 12 V DC power socket (cigarette lighter, etc.) to charge the rechargeable battery.

1. Connect the car adapter to the vehicle's 12 V DC power socket.
2. Connect the car adapter to the printer.



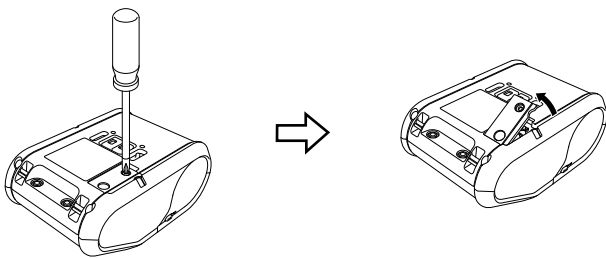
1 Car adapter

NOTE

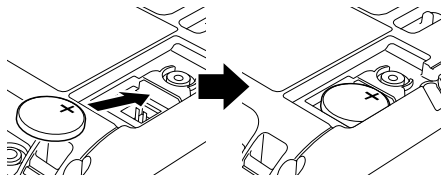
A battery charger (option) and cradle (option) can also be used for charging.

Installing the Clock Battery

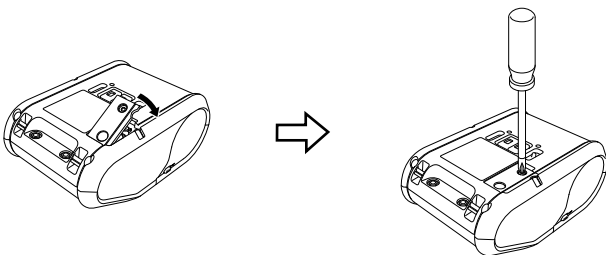
1. Open the battery cover using a Phillips screwdriver.



2. Insert the supplied battery into the space for the battery, making sure that the battery is level and its positive side is facing up.



3. Replace the battery cover.



Setting the Language of the LCD Display

Press the [Menu], [▲], or [▼] button to select the [Administration] menu, and then press the [OK] button. The default password is "1111". Select [#Language], and then press the [OK] button. Select a language, and then press the [OK] button.

Printing Receipts or Labels

1. Install the printer driver and software downloaded from the web page. (See *Installing the Drivers* section.)
2. Make sure that the printer is powered using a charged battery.
3. Turn the printer on.
4. Connect the printer to a computer or handheld device using either a USB cable, Bluetooth, or Wi-Fi.
5. Insert the RD Roll.
6. Print receipts or labels.

For details, see the Online User's Guide.

Setting the RD Roll

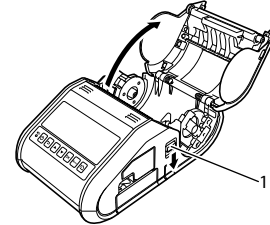
When Not Using the Label Peeler

NOTE

You can also view information about loading paper in Help. While the printer is turned on, open the RD Roll compartment cover, and press the [Menu] button on the printer.

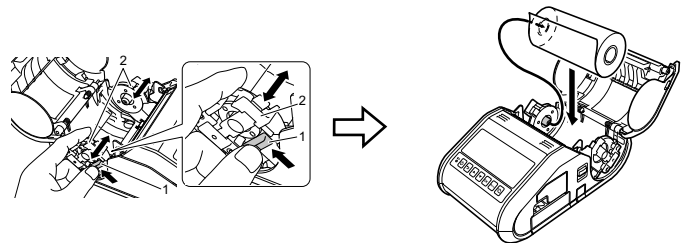


1. Push the cover open lever to open the RD Roll compartment cover.

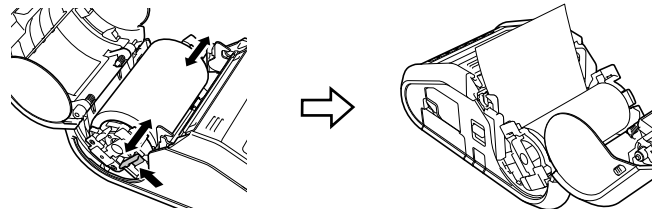


1 cover open lever

2. Open the roll guides by lifting up the roll guide adjustment lever (1) and pulling the roll guide outwards. Insert an RD Roll into the RD Roll compartment with the roll feeding from the bottom as shown.



3. While lifting up the roll guide adjustment lever (1), push in both roll guides (2) to the roll width. Insert the RD Roll so that it is positioned straight in the RD Roll compartment.

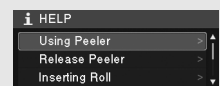


4. Close the RD Roll compartment by pressing down on the center of the cover until it latches.

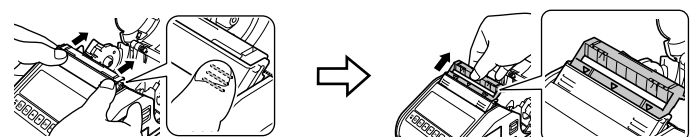
When Using the Label Peeler

NOTE

- You can also view information about setting the label peeler and loading paper in Help. While the printer is turned on, open the RD Roll compartment cover, and press the [Menu] button on the printer.
- A video on setting up the label peeler is available at the following address. <http://solutions.brother.com/movie/d532/>

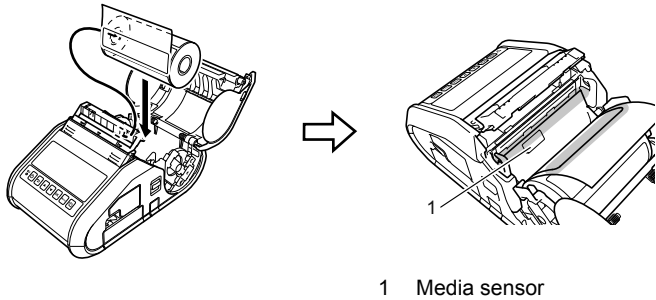


1. Push the cover open lever to open the RD Roll compartment cover.
2. Push both sides of the label peeler towards the rear of the printer. The peeler will move up and away from the printer. Then, fully pull out the peeler away from the printer until the ▼ marks on the peeler are visible as shown.

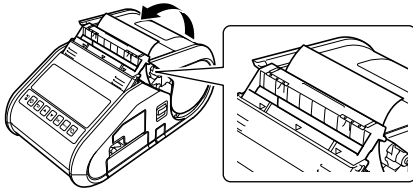


Setting the RD Roll (cont'd)

- Peel off the first label of the RD Roll. Then, insert the RD Roll so that the top edge of the second label is at the same height as the top edge of the media sensor plate.



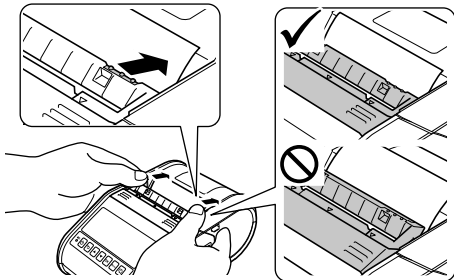
- Close the RD Roll compartment cover. Make sure the label peeler is on top of the cover.



IMPORTANT

Make sure that the labels are not pinched by the peeler rollers. The backing paper of the labels may not be peeled off.

- In order to remove any slack in the roll, lightly pull on the paper fed out of the paper outlet until no more can be pulled out.
- Push both sides of the (...) label peeler until it clicks into place.

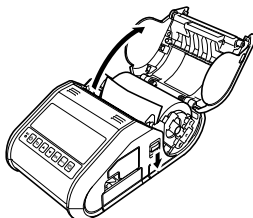


NOTE

To open the RD Roll compartment cover when the label peeler is set up, first release the peeler latches on both sides of the printer before pushing the cover open lever.

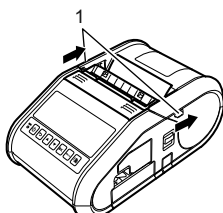
Removing the RD Roll

- Push the cover open lever, and then open the RD Roll compartment cover.



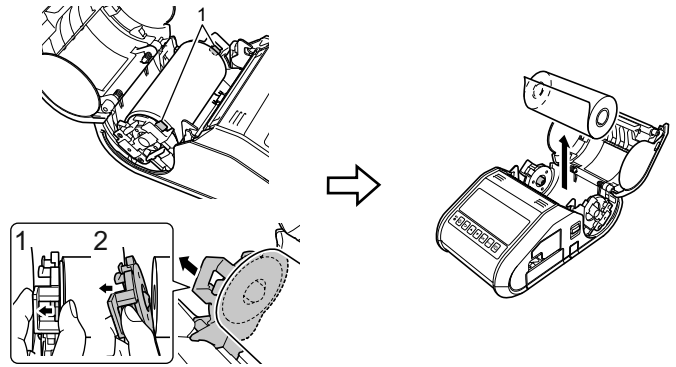
NOTE

When you use the label peeler, first release the peeler latches on both sides of the printer before pushing the cover open lever.



1 Peeler latch

- While pushing the roll release lever, tilt the roll guide slightly, and then remove the roll. The roll can be removed without changing the position of the roll guide. Do not forcefully tilt the roll guide too far. Otherwise, the roll guide could break.



1 Roll release lever

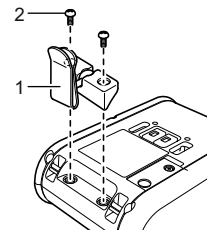
NOTE

When you use the label peeler, make sure that the backing paper does not become caught when removing the RD roll.

Attaching the Belt Clip

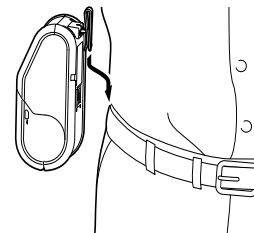
When using the printer outside the office, you can attach the included belt clip to the printer and secure the belt clip to your belt.

- Secure the Phillips-head screws to the rear of the printer as shown.



1 Belt clip
2 Phillips screw

- Attach the clip to your belt.



IMPORTANT

- Make sure that the belt clip is attached securely to the printer and the wearer's belt. There is a risk of injury if the belt clip is not attached securely and the printer falls.

Installing the Drivers

Please install the printer driver and P-touch Editor software before using the printer.

- Visit our website (<http://www.brother.com/inst/>) and download the installer for the software and documents.
- Double-click the downloaded .exe file and follow the on-screen instructions to proceed with the installation. In the dialog box for selecting which items to install, select the necessary software.

Wireless Network Connections

Bluetooth Connection

IMPORTANT

In order for the printer and your Bluetooth-equipped computer or adapter to communicate, you must first pair the printer with the computer or handheld device using the Bluetooth management software.

1. Press the [Menu], [▲], or [▼] button to select the [Bluetooth] menu, and then press the [OK] button. Set [Bluetooth (On/Off)] to [On].
2. Use your Bluetooth management software to discover the printer. Bluetooth communication is now available.

Wi-Fi Connection

IMPORTANT

In order for the printer and your network access point or router to communicate, you must first install the printer driver and Printer Setting Tool.

1. Press the [Menu], [▲], or [▼] button to select the [WLAN] menu, and then press the [OK] button. Set [WLAN (On/Off)] to [On]. Wi-Fi communication is now available.

For details, see the Online User's Guide.

Battery Indicators

- = Indicator is lit
 - ◐ = Indicator is blinking
 - (off) = Indicator is off
- ||| = Orange

Example: ◐◐ = Indicator is blinking in orange

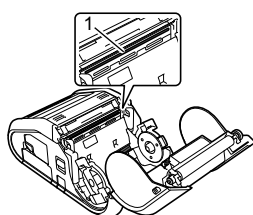
(Battery)	Description
◐◐ (Once every second)	Battery needs recharging
◐◐◐ (Twice every 4 seconds)	Rechargeable battery power: low
◐◐◐◐ (Once every 4 seconds)	Rechargeable battery power: half
◐◐◐◐◐	Charging
(off)	Rechargeable battery power: full Charging complete

Maintaining the Printer

Maintenance of the printer may be carried out as required. However, some environments may require that maintenance must be done more frequently (e.g. in dusty conditions).

■ Print Head Maintenance

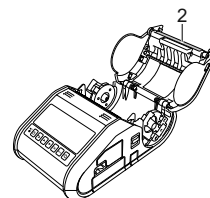
Use a dry cotton swab to wipe the print head.



1 Print head

■ Roller Maintenance

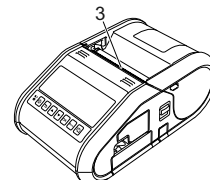
Use a piece of cellophane tape or a lint-free cloth to remove dirt from the roller. After cleaning the roller, make sure that no lint or other material remains on the roller.



2 Roller

■ Paper Outlet Maintenance

If adhesive accumulates at the paper outlet and media becomes jammed, clean the paper outlet with a cloth slightly moistened with isopropyl alcohol.



3 Paper outlet

Printing the Printer Set-up Information

You can use the (Feed) button to print a report that lists the following printer settings:

- Program version
- Printer usage history
- Missing dot test pattern
- Printer setting information
- List of transferred data
- Network setting information

NOTE

- You can use the Printer Setting Tool to set in advance which items will be printed.
- The node name appears in the Printer Settings. The default node name is "BRWxxxxxxxxxx". ("xxxxxxxxxx" is based on your printer's MAC Address / Ethernet Address.)

1. Make sure that a roll of 76.2 mm receipt paper has been loaded and the RD Roll compartment cover is closed.
2. Turn on the printer.
3. Press and hold the (Feed) button until the message "Printing" is displayed on the LCD display. The settings will print.

NOTE

- To print the Printer Set-up Information, we recommend to use 76.2 mm receipt paper.
- This operation can also be performed using the Printer Setting Tool.

For details, see the Online User's Guide.

Internet Addresses

Brother Global Web Site: <http://www.brother.com>
 Brother Developer Center: <http://www.brother.com/product/dev/>
 For Frequently Asked Questions (FAQs), Product Support and Technical Questions, and Driver Updates and Utilities: <http://support.brother.com/>