

## Corporate Information (As of March 31, 2021)

### Corporate Profile

Company Name :	BROTHER INDUSTRIES, LTD.
Date of Incorporation :	January 15, 1934
Paid-in Capital :	19,209 million yen
Head Office :	15-1 Naeshiro-cho, Mizuho-ku, Nagoya, Aichi 467-8561, Japan
Number of Employees :	Consolidated 38,741 / Non-consolidated 3,803
Consolidated Subsidiaries :	112 companies
Entities Accounted for Using the Equity Method :	7 companies
Fiscal Year :	From April 1 to March 31 of the following year
Timing of the Ordinary General Meeting of Shareholders :	June
Total Number of Shares Issued :	262,220,530 shares
Number of Shareholders :	13,959
Listed Stock Exchanges :	Tokyo / Nagoya

### Major External Evaluations



FTSE4Good



FTSE Blossom Japan

2021 CONSTITUENT MSCI JAPAN  
EMPOWERING WOMEN INDEX (WIN)



2021 Sompo Sustainability Index



2021 健康経営銘柄  
Health and Productivity



2021 健康経営優良法人  
Health and productivity  
ホワイト500



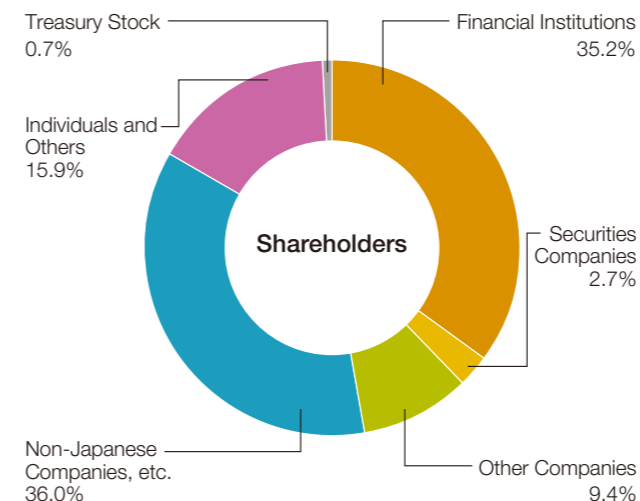
S&P/JPX  
Carbon  
Efficient  
Index

**DISCLAIMER**

THE INCLUSION OF BROTHER INDUSTRIES, LTD. IN ANY MSCI INDEX, AND THE USE OF MSCI LOGOS, TRADEMARKS, SERVICE MARKS OR INDEX NAMES HEREIN, DO NOT CONSTITUTE A SPONSORSHIP, ENDORSEMENT OR PROMOTION OF BROTHER INDUSTRIES, LTD. BY MSCI OR ANY OF ITS AFFILIATES. THE MSCI INDEXES ARE THE EXCLUSIVE PROPERTY OF MSCI. MSCI AND THE MSCI INDEX NAMES AND LOGOS ARE TRADEMARKS OR SERVICE MARKS OF MSCI OR ITS AFFILIATES.

## Stock Information (As of March 31, 2021)

### Stock Distribution



### Major Shareholders (Top 10)

Names of Shareholders	Number of shares held (1,000 shares)	Percentage of shares held (%) *
The Master Trust Bank of Japan, Ltd. (Trust Account)	22,075	8.48
SSBTC Client Omnibus Account	12,034	4.62
Nippon Life Insurance Company	11,798	4.53
Custody Bank of Japan, Ltd. (Trust Account)	11,189	4.30
Sumitomo Mitsui Banking Corporation	6,058	2.33
Sumitomo Life Insurance Company	4,499	1.73
Brother Employees Shareholding Plan	4,492	1.73
MUFG Bank, Ltd.	3,796	1.46
Custody Bank of Japan, Ltd. (Trust Account No.5)	3,751	1.44
Custody Bank of Japan, Ltd. (Trust Account No.7)	3,687	1.42

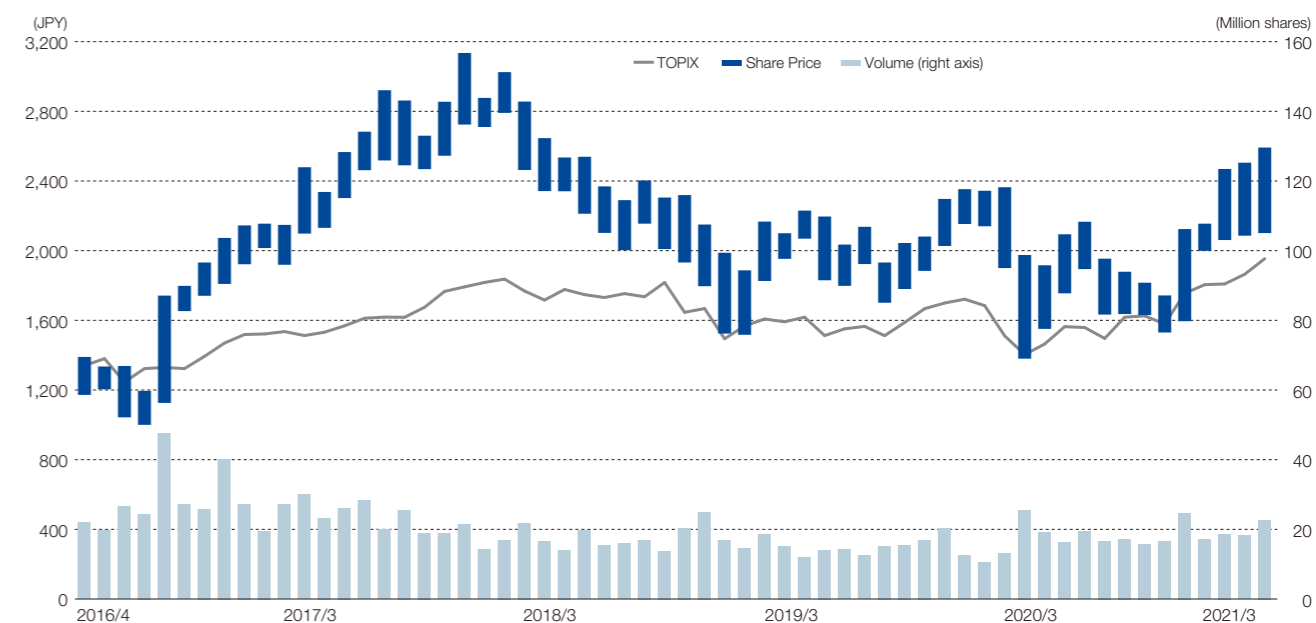
\* Shareholding ratio (excluding Treasury shares)

### Credit Ratings

Rating and Investment Information, Inc.: A (Stable)

### Stock Overview

#### Share Price and Volume Transition



Corporate information

<https://global.brother/en/corporate/>

Investor Relations

<https://global.brother/en/investor/>

Sustainability

<https://global.brother/en/sustainability>

Brother Group SDGs Special Site: Brother SDGs story

<https://www.brotherearth.com/e/>

## **BROTHER INDUSTRIES, LTD.**

15-1 Naeshiro-cho, Mizuho-ku, Nagoya 467-8561, Japan  
URL: <https://global.brother>

Published in November 2021



Working with you for a better environment  
[www.brotherearth.com](http://www.brotherearth.com)



Brother Group's Special Website

**SDGs**  
**STORY**

[brotherearth.com](http://brotherearth.com)