


## Corporate Information (As of March 31, 2022)


### Corporate Profile

<b>Company Name :</b>	BROTHER INDUSTRIES, LTD.
<b>Date of Incorporation :</b>	January 15, 1934
<b>Paid-in Capital :</b>	19,209 million yen
<b>Head Office :</b>	15-1 Naeshiro-cho, Mizuho-ku, Nagoya, Aichi 467-8561, Japan
<b>Number of Employees :</b>	Consolidated 41,215 / Non-consolidated 3,867
<b>Consolidated Subsidiaries :</b>	110 companies
<b>Entities Accounted for Using the Equity Method :</b>	7 companies
<b>Fiscal Year :</b>	From April 1 to March 31 of the following year
<b>Month of the Ordinary General Meeting of Shareholders :</b>	June
<b>Total Number of Shares Issued :</b>	262,220,530 shares
<b>Number of Shareholders :</b>	14,395
<b>Listed Stock Exchanges :</b>	Tokyo / Nagoya


### Major External Evaluations




FTSE4Good




FTSE Blossom Japan




FTSE Blossom Japan Sector Relative Index




2022 Sompo Sustainability Index



2022 健康経営優良法人  
Health and productivity  
ホワイト500



2022 CONSTITUENT MSCI JAPAN  
EMPOWERING WOMEN INDEX (WIN)

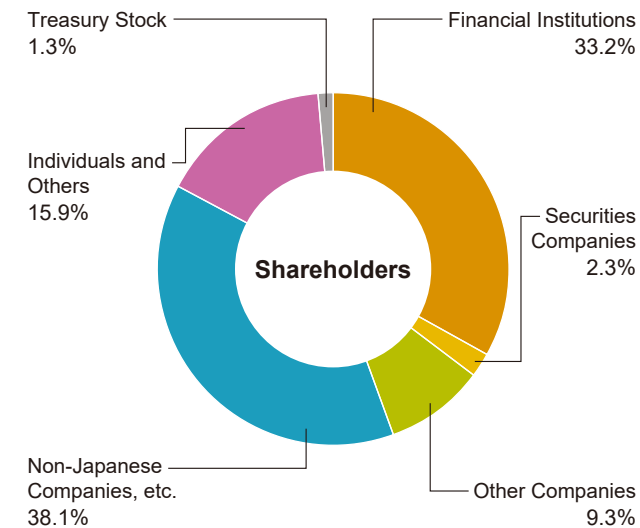


S&P/JPX Carbon Efficient Index

**DISCLAIMER**  
THE INCLUSION OF BROTHER INDUSTRIES, LTD. IN ANY MSCI INDEX, AND THE USE OF MSCI LOGOS, TRADEMARKS, SERVICE MARKS OR INDEX NAMES HEREIN, DO NOT CONSTITUTE A SPONSORSHIP, ENDORSEMENT OR PROMOTION OF BROTHER INDUSTRIES, LTD. BY MSCI OR ANY OF ITS AFFILIATES. THE MSCI INDEXES ARE THE EXCLUSIVE PROPERTY OF MSCI. MSCI AND THE MSCI INDEX NAMES AND LOGOS ARE TRADEMARKS OR SERVICE MARKS OF MSCI OR ITS AFFILIATES.

## Stock Information (As of March 31, 2022)

### Stock Distribution



### Major Shareholders (Top 10)

Name of Shareholder	Number of shares held (1,000 shares)	Percentage of shares held (%) *
The Master Trust Bank of Japan, Ltd. (Trust Account)	38,346	14.81
SSBTC Client Omnibus Account	12,427	4.80
Custody Bank of Japan, Ltd. (Trust Account)	10,976	4.24
Nippon Life Insurance Company	8,848	3.42
Sumitomo Mitsui Banking Corporation	5,398	2.09
Brother Employees Shareholding Plan	4,543	1.76
Sumitomo Life Insurance Company	4,499	1.74
BBH FOR UMB BK-152105-PEAR TREE PFVF	4,160	1.61
STATE STREET BANK WEST CLIENT - TREATY 505234	4,053	1.57
STATE STREET BANK AND TRUST COMPANY 505103	3,519	1.36

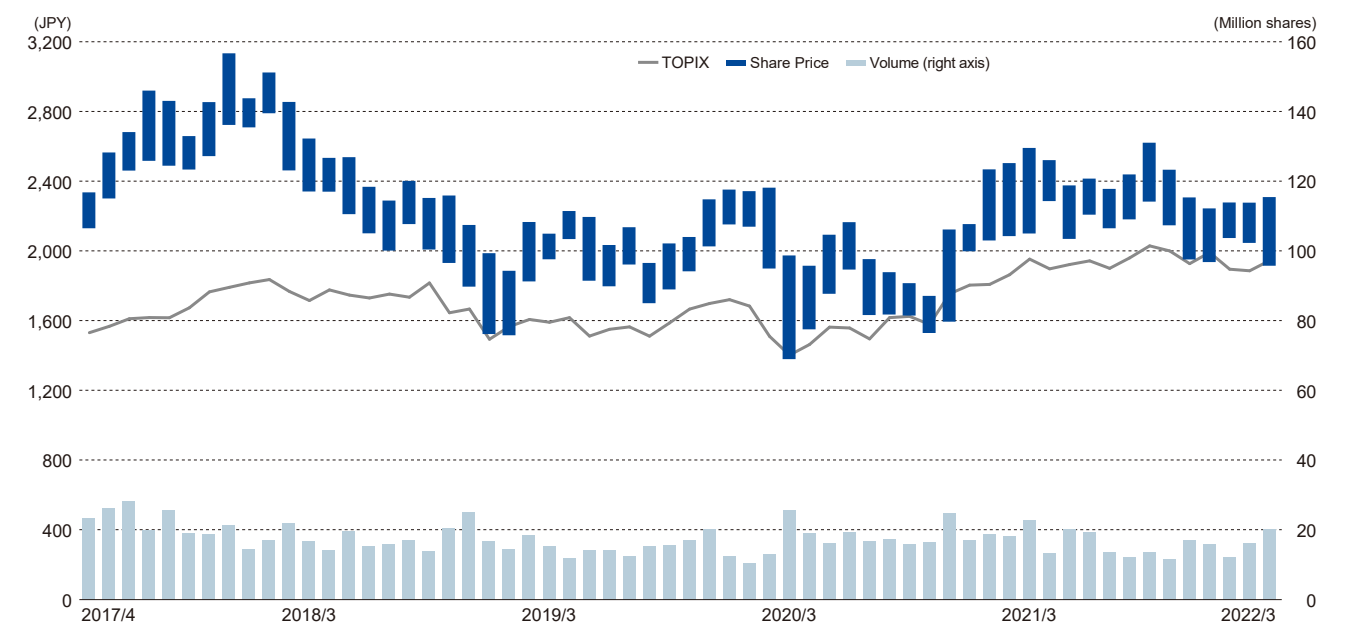
\* The percentage of shares held is calculated after deducting the number of shares of treasury stock (3,344 thousand shares) from the total number of shares issued

### Credit Ratings

Rating and Investment Information, Inc.: A (Positive) (As of October 7, 2022)

### Stock Overview

#### Share Price and Volume Transition



Corporate information

<https://global.brother/en/corporate>

Investor Relations

<https://global.brother/en/investor>

Sustainability

<https://global.brother/en/sustainability>

Brother Group SDGs Special Site: Brother SDGs story

<https://sdgsstory.global.brother/e>

## **BROTHER INDUSTRIES, LTD.**

15-1 Naeshiro-cho, Mizuho-ku, Nagoya 467-8561, Japan  
URL: <https://global.brother>

Published in November 2022



Working with you for a better environment  
[www.brotherearth.com](http://www.brotherearth.com)



Brother Group's Special Website

**SDGs  
STORY**

[sdgsstory.global.brother](https://sdgsstory.global.brother)