

## Corporate Information

### Corporate Profile (As of March 31, 2023)

<b>Company Name :</b>	BROTHER INDUSTRIES, LTD.
<b>Date of Incorporation :</b>	January 15, 1934
<b>Paid-in Capital :</b>	19,209 million yen
<b>Head Office :</b>	15-1 Naeshiro-cho, Mizuho-ku, Nagoya, Aichi 467-8561, Japan
<b>Number of Employees :</b>	Consolidated 41,653 / Non-consolidated 3,890
<b>Number of Consolidated Subsidiaries :</b>	106 companies
<b>Entities Accounted for Using the Equity Method :</b>	7 companies
<b>Fiscal Year :</b>	From April 1 to March 31 of the following year
<b>Month of the Ordinary General Meeting of Shareholders :</b>	June
<b>Total Number of Shares Issued :</b>	257,755,930 shares
<b>Number of Shareholders :</b>	18,101
<b>Listed Stock Exchanges :</b>	Tokyo / Nagoya

### Major External Evaluations



FTSE4Good



FTSE Blossom Japan



FTSE Blossom Japan Sector Relative Index



2023 Sompo Sustainability Index



2023  
健康経営優良法人  
Health and productivity  
ホワイト500



S&P/JPX  
Carbon Efficient Index

2023 CONSTITUENT MSCI JAPAN EMPOWERING WOMEN INDEX (WIN)

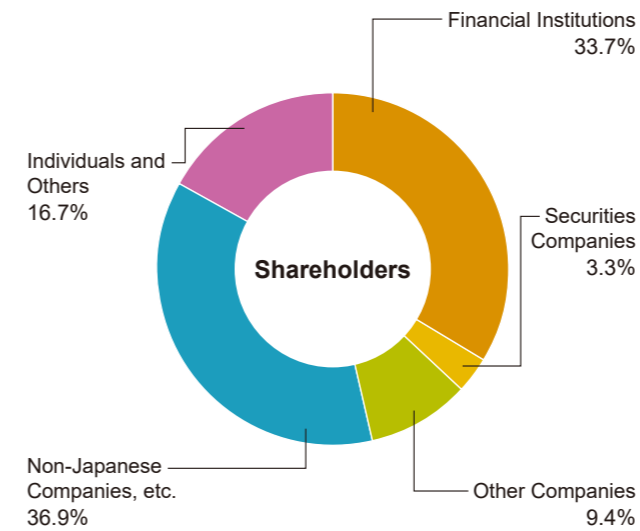
2023 CONSTITUENT MSCI JAPAN ESG SELECT LEADERS INDEX

**DISCLAIMER**

THE INCLUSION OF BROTHER INDUSTRIES, LTD. IN ANY MSCI INDEX, AND THE USE OF MSCI LOGOS, TRADEMARKS, SERVICE MARKS OR INDEX NAMES HEREIN, DO NOT CONSTITUTE A SPONSORSHIP, ENDORSEMENT OR PROMOTION OF BROTHER INDUSTRIES, LTD. BY MSCI OR ANY OF ITS AFFILIATES. THE MSCI INDEXES ARE THE EXCLUSIVE PROPERTY OF MSCI. MSCI AND THE MSCI INDEX NAMES AND LOGOS ARE TRADEMARKS OR SERVICE MARKS OF MSCI OR ITS AFFILIATES.

## Stock Information (As of March 31, 2023)

### Stock Distribution



### Major Shareholders (Top 10)

Name of Shareholder	Number of shares held (1,000 shares)	Percentage of shares held (%) *
The Master Trust Bank of Japan, Ltd. (Trust Account)	39,042	15.24
Custody Bank of Japan, Ltd. (Trust Account)	12,484	4.87
SSBTC CLIENT OMNIBUS ACCOUNT	11,984	4.68
Nippon Life Insurance Company	8,848	3.45
Sumitomo Mitsui Banking Corporation	5,398	2.11
Brother Employees Shareholding Plan	4,626	1.81
Sumitomo Life Insurance Company	4,499	1.76
STATE STREET BANK WEST CLIENT - TREATY 505234	4,169	1.63
JP MORGAN CHASE BANK 385781	3,118	1.22
STATE STREET BANK AND TRUST COMPANY 505103	3,041	1.19

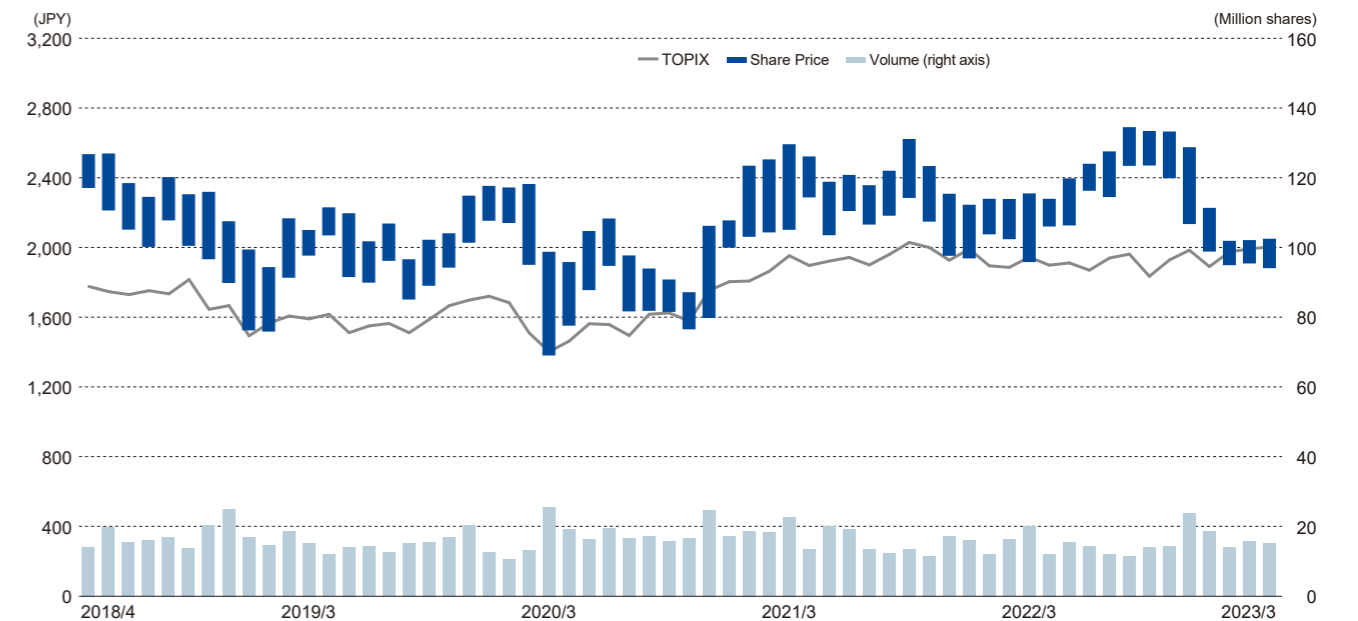
\* The percentage of shares held is calculated after deducting the number of shares of treasury stock (1,565 thousand shares) from the total number of shares issued. Furthermore, treasury stock (1,565 thousand shares) does not include the number of shares of the Company held by the officer compensation BIP trust (258 thousand shares).

### Credit Ratings

Rating and Investment Information, Inc.: A (Positive) (As of October 5, 2023)

### Stock Overview

#### Share Price and Volume Transition



Corporate information

<https://global.brother/en/corporate>

Investor Relations

<https://global.brother/en/investor>

Sustainability

<https://global.brother/en/sustainability>

Brother Group SDGs Special Site: Brother SDGs story

<https://sdgsstory.global.brother/e>

## **BROTHER INDUSTRIES, LTD.**

15-1 Naeshiro-cho, Mizuho-ku, Nagoya 467-8561, Japan  
URL: <https://global.brother/en>

Published in November 2023



Working with you for a better environment



Brother Group's Special Website

**SDGs**  
**STORY**

[sdgsstory.global.brother](https://sdgsstory.global.brother)