

Corporate Information

Corporate Profile (As of March 31, 2024)

Company Name :	BROTHER INDUSTRIES, LTD.
Date of Incorporation :	January 15, 1934
Paid-in Capital :	19,209 million yen
Head Office :	15-1 Naeshiro-cho, Mizuho-ku, Nagoya, Aichi 467-8561, Japan
Number of Employees :	Consolidated 40,538 / Non-consolidated 3,877
Number of Consolidated Subsidiaries :	106 companies
Entities Accounted for Using the Equity Method :	7 companies
Fiscal Year :	From April 1 to March 31 of the following year
Month of the Ordinary General Meeting of Shareholders :	June
Total Number of Shares Issued :	257,755,930 shares
Number of Shareholders :	15,031
Listed Stock Exchanges :	Tokyo / Nagoya

Major External Evaluations



FTSE4Good



FTSE Blossom Japan Index



FTSE Blossom Japan Sector Relative Index



2024 Sompo Sustainability Index



2024 健康経営銘柄 Health and Productivity



2024 健康経営優良法人 Health and productivity ホワイト500

2024 CONSTITUENT MSCI JAPAN EMPOWERING WOMEN INDEX (WIN)

2024 CONSTITUENT MSCI NIHONKABU ESG SELECT LEADERS INDEX

DISCLAIMER

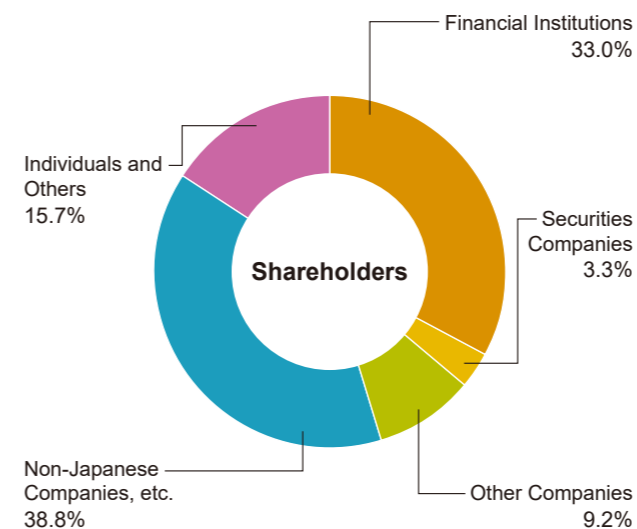
THE INCLUSION OF BROTHER INDUSTRIES, LTD. IN ANY MSCI INDEX, AND THE USE OF MSCI LOGOS, TRADEMARKS, SERVICE MARKS OR INDEX NAMES HEREIN, DO NOT CONSTITUTE A SPONSORSHIP, ENDORSEMENT OR PROMOTION OF BROTHER INDUSTRIES, LTD. BY MSCI OR ANY OF ITS AFFILIATES. THE MSCI INDEXES ARE THE EXCLUSIVE PROPERTY OF MSCI. MSCI AND THE MSCI INDEX NAMES AND LOGOS ARE TRADEMARKS OR SERVICE MARKS OF MSCI OR ITS AFFILIATES.



S&P/JPX Carbon Efficient Index

Stock Information (As of March 31, 2024)

Stock Distribution



Major Shareholders (Top 10)

Name of Shareholder	Number of shares held (1,000 shares)	Percentage of shares held (%) *
The Master Trust Bank of Japan, Ltd. (Trust Account)	38,670	15.09
Custody Bank of Japan, Ltd. (Trust Account)	12,170	4.75
SSBTC CLIENT OMNIBUS ACCOUNT	12,016	4.69
Nippon Life Insurance Company	8,848	3.45
Sumitomo Mitsui Banking Corporation	5,398	2.11
STATE STREET BANK WEST CLIENT - TREATY 505234	4,734	1.85
The Brother Group Employee Stock Ownership Association	4,613	1.80
Sumitomo Life Insurance Company	4,499	1.76
BNYMSANV AS AGENT/CLIENTS LUX UCITS NON TREATY 1	4,347	1.70
STATE STREET BANK AND TRUST COMPANY 505103	3,348	1.31

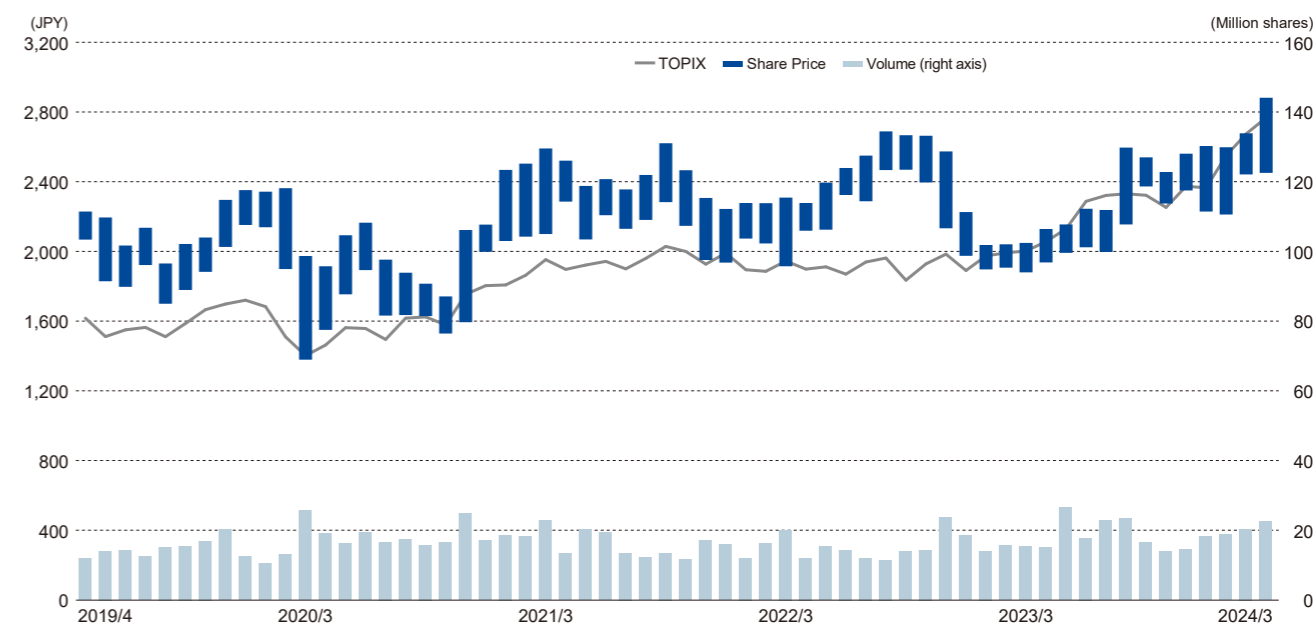
* The percentage of shares held is calculated after deducting the number of shares of treasury stock (1,529 thousand shares) from the total number of shares issued. Furthermore, treasury stock (1,529 thousand shares) does not include the number of shares of the Company held by the officer compensation BIP trust (250 thousand shares).

Credit Ratings

Rating and Investment Information, Inc.: A+ (Stable) (As of October 10, 2024)

Stock Overview

Share Price and Volume Transition



Corporate information

<https://global.brother/en/corporate>

Investor Relations

<https://global.brother/en/investor>

Sustainability

<https://global.brother/en/sustainability>

Brother Group SDGs Special Site: Brother SDGs story

<https://sdgsstory.global.brother/e>

BROTHER INDUSTRIES, LTD.

15-1 Naeshiro-cho, Mizuho-ku, Nagoya 467-8561, Japan
URL: <https://global.brother/en>

Published in November 2024



Working with you for a better environment

