

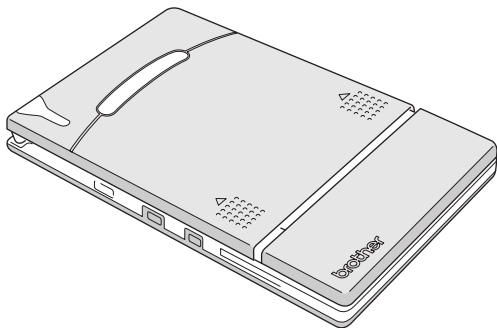
# brother®

At your side.

Software Guide

# **M**PRINT

**MW-100**  
**Mobile Printer**



- Before using this printer, be sure to read this User's Guide.
- We suggest that you keep this manual in a handy place for future reference.

- Microsoft® and Windows® are registered trademarks of Microsoft Corporation in the United States and other countries.
- Palm™ and Palm™ OS are registered trademarks of Palm, Inc. or its subsidiaries.
- IrPRINT™ is a trademark of IS/Complete, Inc.
- Documents To Go® is a registered trademark of DataVis, Inc. in the United States and other countries.
- Portion of graphics filter software are based in part on the work of Group 42, Inc.
- Portion of graphics filter software are based in part on the work of the Independent JPEG group.
- VS-FlexGrid Pro Copyright(C) 1999 VideoSoft Corporation.
- All other software and product names mentioned are trademarks or registered trademarks of their respective companies.
- PrintPocketCE for Brother MW-100 by FieldSoftware Products. For additional Pocket PC printing utilities, visit '<http://www.fieldsoftware.com>'.

# CONTENTS

<b>CONTENTS .....</b>	<b>1</b>
<b>Operating Environment .....</b>	<b>2</b>
<b>Printing Data From a Computer Running Windows 4</b>	
Installing the software .....	4
Printing .....	9
Printing from other applications .....	10
Uninstalling the software .....	11
<b>Printing Data From a Pocket PC .....</b>	<b>13</b>
Installing the software .....	14
Printing .....	17
Printing procedures .....	18
Uninstalling the software .....	34
PrintPocketCE for Brother .....	35
<b>Printing Data From a Palm<sup>TM</sup> Device .....</b>	<b>37</b>
IrPRINT <sup>TM</sup> for Palm <sup>TM</sup> .....	37

# 1 Operating Environment

This mobile printer can print data from a computer running Windows® or a Pocket PC (PDA running Pocket PC).

## Computer running Windows®

In order to use this printer, make sure that your system configuration meets the following requirements.

### ■ PC operating environment

Processor	Pentium 266 MHz or higher recommended
Operating system	Microsoft® Windows® 98, 98 SE, Me, 2000 Professional or XP
Interface	Compliant with USB Ver. 1.1
Available Memory	64 MB or more recommended
Hard disk free space	Minimum 20 MB

To print data from a computer running Windows® → Refer to page 4.

## Pocket PC (PDA running Pocket PC)

In order to use this printer, make sure that your Pocket PC meets the following requirements.

### ■ Pocket PC operating environment

Processor	ARM or MIPS (Not compatible with SH; Pocket PC 2002 is compatible only with ARM.)
Operating system	Microsoft® Pocket PC Microsoft® Pocket PC 2002
Interface	Infrared port compliant with IrDA 1.2

- When installing the software, a computer running Windows® that can connect to the Pocket PC will be needed.

To print data from a Pocket PC → Refer to page 13.



- For information on Pocket PCs whose operation has already been verified, check our Web site at <http://www.brother.com>.

## 2 Printing Data From a Computer Running Windows

In order to use this printer to print data from a computer running Windows®, the software must be installed on the computer.

### Installing the software



- Do not connect this printer to the computer until you are instructed to do so.

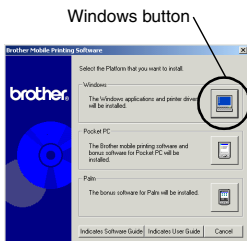
#### 1 Insert the enclosed CD-ROM into the CD-ROM drive of the computer running Windows®.

- The installer automatically starts up and the Brother Mobile Printing Software dialog box appears.
- If the installer does not automatically start up, double-click “My Computer”, and then double-click



#### 2 Click the top button (Windows).

- A dialog box appears, allowing you to select what to install.



## 3 Click the button for the software that you wish to install.

Here, click the button for the SpotSnap software.

→ The Driver Setup dialog box appears.



## ■ Software packages that are installed

Software	Description
SpotSnap Operator	Software for editing imported data
Snapper	Software for grabbing images, text or copied data from the PC screen into SpotSnap Operator
Templates	Samples of pre-formatted layouts
Help	On-screen operating guide
Driver	Software for printing with this printer

## 4 Follow the instructions that appear to finish the installation.

Next, the printer driver is installed.

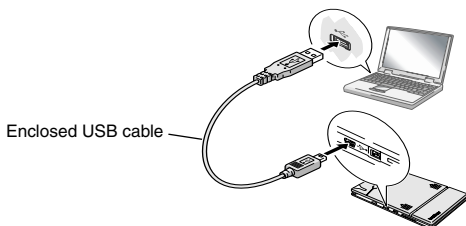
The installation procedure for the printer driver differs depending on the operating system being used.

For Windows® 98, 98SE, 2000 or XP → Continue with the procedure on the next page.

For Windows® Me → Go directly to the procedure on page 7.

## For Windows<sup>®</sup> 98, 98SE, 2000 Professional or XP

- 5** When the message “Connect Brother MW-100, and then turn it on.” appears, use the enclosed USB cable to connect this printer to the computer running Windows<sup>®</sup>, and then turn on the printer.

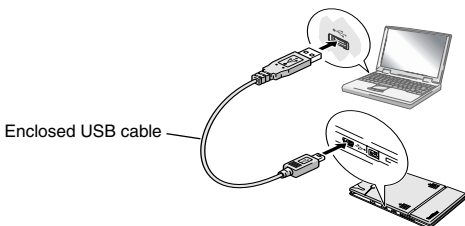


→ The printer driver is installed.

→ Continue with “Printing” on page 9.

## For Windows® Me

- 5** Connect the MW-100 to the computer, and then turn it on.



→ Through Plug and Play, the printer is detected and the Add New Hardware Wizard dialog box appears.

- 6** Although **Automatic search for a better driver (Recommended)** is selected as a default, select **Specify the location of the driver (Advanced)**, and then click the Next button.



- 7** Make sure that **Search for the best driver for your device. (Recommended).** is selected, select the **Specify a location** check box, and then click the Browse button.

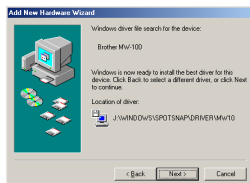


→ The Browse for Folder dialog box appears.

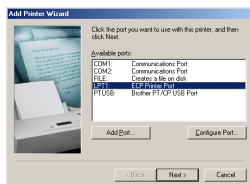
- 8** In the Browse for Folder dialog box, specify the path “CD-ROM\_drive:\Windows\Spot-snap\Driver\MW100\WinME”, and then click the OK button.

→ The file is found.

- 9** Click the Next button.



- 10** When the dialog box allowing you to select a port appears, select “PTUSB:”, and then click the Next button.

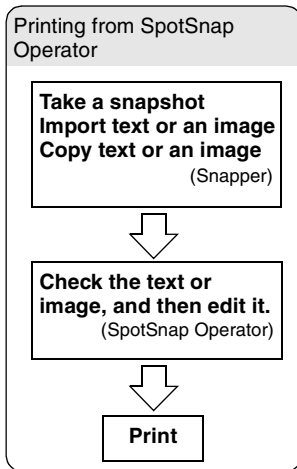


Follow the instructions that appear to finish the installation.

## Printing

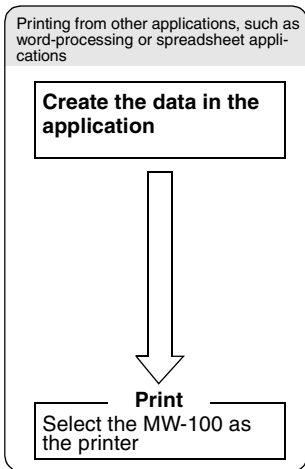
This printer can be used to print in two different ways.

### DIRECTLY FROM PC SCREEN

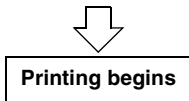


→ Refer to the PDF manual on the CD-ROM.

### DIRECTLY FROM WINDOWS SOFTWARE PACKAGES



→ Refer to page 10.



## Printing from other applications

If this printer is selected for printing, it can be used to print data from other applications, such as word-processing or spreadsheet applications.



- This printer is not compatible with some applications. For details on compatible applications and for information on the newest printer driver, check our Web site at <http://www.brother.com>.

## Selecting the MW-100 as the printer and printing

The procedure for Excel 2000 will be described as an example.

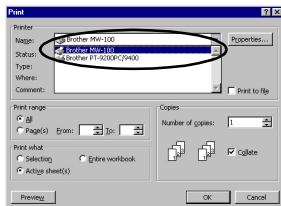
**1** Create the required data with Excel 2000.

**2** On the File menu, click **Print**.

**3** From the Printer list, select **Brother MW-100**.

**4** Click the OK button.

→ The data is sent to the printer and printed.



- The data that is to be printed should be adjusted to the size of the paper. For example, if the paper size is changed from A4 to A7, the data must be adjusted to fit in the A7-size page.

---


## Uninstalling the software

---

If this printer will no longer be used on the computer, the SpotSnap software and the printer driver can be uninstalled.

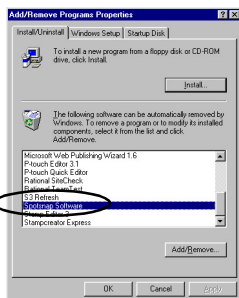
### Uninstalling (removing) the SpotSnap software

The procedure for Windows® 98 will be described as an example.

- 1 Click the Start button, select **Settings**, click **Control Panel**, and then double-click  in Control Panel.

→ The Add/Remove Programs Properties dialog box appears.

- 2 Select **Spotsnap Software**, and then click the **Add/Remove** button. Follow the instructions that appear to finish the uninstallation.



## Uninstalling (removing) the printer driver

- 1 Click the Start button, select **Settings**, and then click **Printers**.

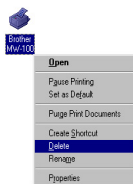
→ The Printers dialog box appears.

- 2 Right-click  .

→ A pop-up menu appears.

- 3 Select **Delete**.

→ The printer driver is deleted.



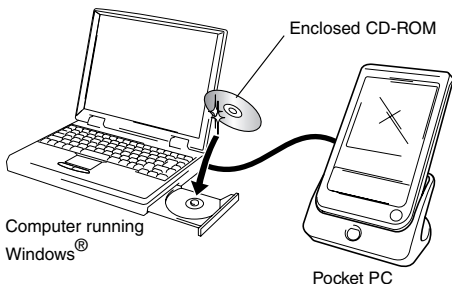
- In order to use this printer from a computer, the software must be installed again.

### 3 Printing Data From a Pocket PC

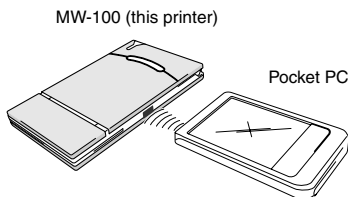
In order to use this printer to print data from a Pocket PC (PDA running Pocket PC), a computer running Windows® must be used to install the software onto the Pocket PC.

- For details on ActiveSync® and on connecting the Pocket PC to a computer running Windows®, refer to the instruction manual for the Pocket PC.

#### ■ Installing the software onto a Pocket PC




#### ■ Printing



# Installing the software

## 1 Insert the enclosed CD-ROM into the CD-ROM drive of the computer running Windows®.

- The installer automatically starts up and the Brother Mobile Printing Software dialog box appears.
- If the installer does not automatically start, double-click “My Computer”, and then double-click .

## 2 Click the second button (Pocket PC).

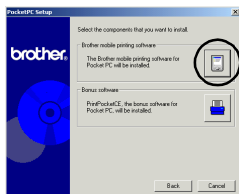
- The PocketPC Setup dialog box appears.

Pocket PC button



## 3 Click the button for installing the Brother mobile printing software.

- A dialog box appears, allowing you to select either “Pocket PC” or “Pocket PC 2002”.



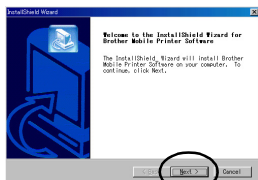
- 4** Click the button for the operating system that you are using.

→ The InstallShield Wizard starts.



- 5** Click either the Yes or No button.

Follow the instructions that appear to finish the installation.



Next button









## ■ Software packages that are installed

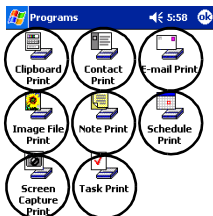
Software	Description	Setup Method	
		Standard	Compact
Common modules	Basic components of the software	○	○
Note Print	Prints memos saved with Notes	○	
Schedule Print	Prints schedules saved with Schedule	○	
Task Print	Prints tasks and appointments saved with Tasks	○	
Contact Print	Prints names, addresses and telephone numbers saved with Contact	○	○
Clipboard Print	Prints images and text moved to the Clipboard	○	
Screen Capture Print	Prints the currently displayed screen of the Pocket PC	○	○
Image File Print	Prints saved image files	○	
E-mail Print	Prints saved e-mails	○	
Help files	Operating guide that can be viewed on the screen of the Pocket PC	○	○

\* For information on future updates, check our Web site at <http://www.brother.com>.

# Printing

This printer has eight different printing functions.

**1** Check that  
 Clipboard Print,  
 Contact Print,  E-mail Print,  Image File Print,  
 Note Print,  Schedule Print,  Screen Capture Print, and  
 Task Print appear in the  
 Programs folder.



- The positions of the icons that appear may differ on your Pocket PC.

**■ Refer to the pages indicated below for more details on the corresponding printing function.**



Note Print → page 18



Schedule Print → page 24



Task Print → page 27



Contact Print → page 28



Clipboard Print → page 29



Screen Capture Print → page 30



Image File Print → page 32



E-mail Print → page 33

---

## Printing procedures

---

First, we will describe the procedure for using the Note Print.  
This procedure contains the basic steps for printing.

### Note Print

Memos saved with Notes can be printed.

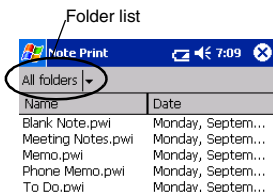
**1** Tap the Start button, tap **Programs**, and then

tap  .

→ A list of memos appears in the Note Print screen.

**2** Tap the memo that you wish to print.  
Only one memo can be selected.

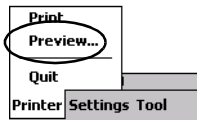
→ The selected memo is highlighted.



- To display the memos in each previously categorized folder, tap the folder list.

**3** Tap **Preview** in the Printer menu.

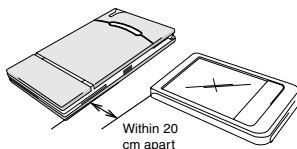
→ The Print preview screen appears.





- If **Print** was tapped, printing will begin without the Print preview screen being displayed.

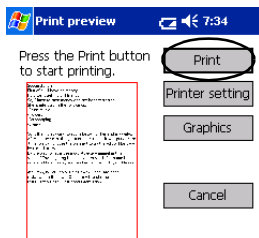
**4** Position this printer and the Pocket PC so that their IrDA infrared ports are facing each other and within 20 cm apart.



- Make sure that this printer is turned on.

**5** Tap the Print button.

→ After the Pocket PC detects this printer, printing begins.



Direct the infrared port to the printer correctly.





- The printed layout may differ depending on the size of paper selected with **Printer setting**.
- The Print preview screen allows you to view an image of the data as it will be printed. Text may be difficult to read.

## Advanced settings

Precise print settings can be specified.

### ■ Printer settings

#### 1 Tap **Printer setting** in the Print preview screen.

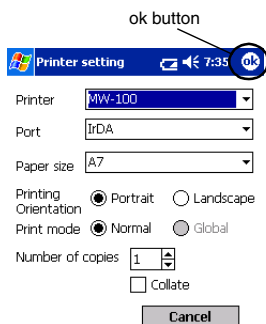
→ The Printer setting screen appears.

#### 2 The following settings can be specified.

- Printer:  
MW-100 (this printer)
- Port:  
IrDA (infrared port)/  
FILE/USB
- Paper size:  
A7/Cut labels (4  
Labels)/Cut labels (2  
Labels)

The setting is adjusted according to the paper cassette that is loaded into the printer.

- Printing orientation: Portrait/Landscape
- Print mode: Normal/Global
- Number of copies: 1 through 50/Collate



#### 3 Tap .

→ The printer settings are applied.

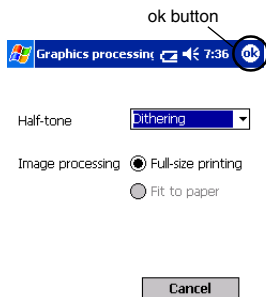
## ■ Graphics-processing settings

**1** Tap **Graphics** in the Print preview screen.

→ The Graphics processing screen appears.

**2** The following settings can be specified.

- Half-tone:  
Dithering/Error Diffusion/None
- Image processing:  
Full-size printing/Fit to paper



**3** Tap .

→ The graphics-processing settings are applied.

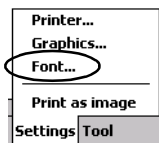


## ■ Text format settings

The font and size of the printed text can be changed.

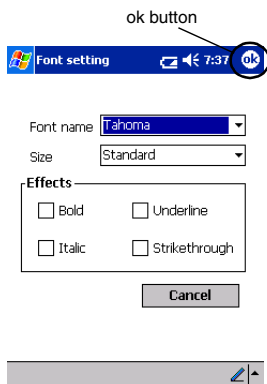
**1** Tap **Font** in the Settings menu of the Note Print screen.

→ The Font setting screen appears.



**2** The following text settings can be specified.

- Font name:  
Tahoma/Courier New/Frutiger Lino-type/Bookdings
- Size:  
Largest/Larger/Standard/Smaller/Smallest
- Effects:  
Bold/Underline/Italic/Strikethrough



**3** Tap .

→ The text format settings are applied.

## Schedule Print

Schedules saved with Schedule can be printed.

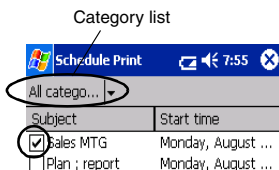
**1** Tap the Start button, tap **Programs**, and then



→ A list of schedules appears in the Schedule Print screen.

**2** Tap the box to the left of the schedule that you wish to print.

More than one schedule can be selected.



→ A check mark appears.



- The period of time to be printed can be specified.  
(→ “Printing a specified date” on page 26)
- To display the schedules in each previously specified category, tap the category list.

**3** Tap **Preview** in the Printer menu.

The procedure continues in the same way as with the Note Print (→ page 18).

## ■ Template setting

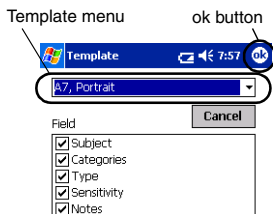
The layout in which data is printed can be specified.

- 1 Tap **Template** in the Settings menu of the Schedule Print screen.



→ The Template screen appears.

- 2 Select the template that you wish to use.



- 3 Tap .

→ The selected template is applied.

## Examples of templates

Two down

<b>Group conference</b>	
Location:	1st C room
Starts:	05 September, 2001 1:00 PM
Ends:	05 September, 2001 2:00 PM
Type:	Normal
Categories:	Business
Notes:	
-----	
<b>Sales report</b>	
Location:	3rd C room
Starts:	05 September, 2001 3:00 PM
Ends:	05 September, 2001 4:00 PM
Type:	Normal
Categories:	Business
Notes:	

Four down

<b>Group conference</b>	
Location:	1st C room
Starts:	05 September, 2001 1:00 PM
Ends:	05 September, 2001 2:00 PM
-----	
<b>Sales report</b>	
Location:	3rd C room
Starts:	05 September, 2001 3:00 PM
Ends:	05 September, 2001 4:00 PM
-----	
<b>Meeting ABCD co.</b>	
Location:	Co. Building
Starts:	05 September, 2001 4:30 PM
Ends:	05 September, 2001 5:30 PM
-----	
<b>Welcome party</b>	
Location:	Pub 2nd street
Starts:	05 September, 2001 7:00 PM
Ends:	05 September, 2001 9:00 PM

A7 portrait

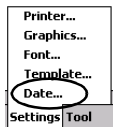
<b>Welcome party</b>	
Location:	Pub 2nd street
Starts:	05 September, 2001 7:00 PM
Ends:	05 September, 2001 9:00 PM
Notes:	contact ; john 012-345-6789
-----	
Sensitivity:	Normal
Occurs:	Pattern once
Type:	Normal
Categories:	Personal

## ■ Printing a specified date

The period of time to be printed can be specified.

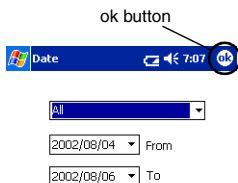
- 1 Tap **Date** in the Settings menu of the Schedule Print screen.

→ The Date screen appears.



- 2 Change the date setting.

- Start date/End date/Inprogress
- Date



- 3 Tap .

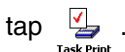
→ The schedules included in the specified time period are displayed in the Schedule Print screen.



## Task Print

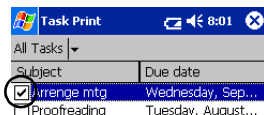
Tasks and appointments saved with Tasks can be printed.

**1** Tap the Start button, tap **Programs**, and then



→ A list of tasks appears in the Task Print screen.

**2** Tap the box to the left of the task that you wish to print. More than one task can be selected.



→ A check mark appears.



- The period of time to be printed can be specified.  
(→ “Printing a specified date” on page 26)
- The layout in which data is printed can be specified.  
(→ “Template setting” on page 25)

The procedure continues in the same way as with the Note Print (→ page 18).

## Contact Print

Names, address and telephone numbers saved with Contacts can be printed.

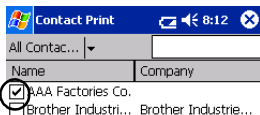
**1** Tap the Start button, tap **Programs**, and then



→ A list of contacts appears in the Contact Print screen.

**2** Tap the box to the left of the contact that you wish to print.

More than one name can be selected.



→ A check mark appears.



- The layout in which data is printed can be specified.  
(→ "Template setting" on page 25)

The procedure continues in the same way as with the Note Print (→ page 18).

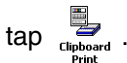
## Clipboard Print

The images and text moved to the Clipboard can be printed.



- The Clipboard is the name of the location where data that was cut or copied is stored.

**1** Tap the Start button, tap **Programs**, and then



→ The contents of the Clipboard appear in the Clipboard Print screen.

The procedure continues in the same way as with the Note Print (→ page 18).

# Screen Capture Print

The currently displayed screen of the Pocket PC can be printed.

- 1** Tap the Start button, tap **Programs**, and then

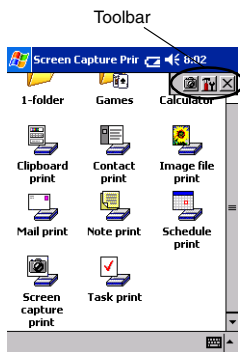


→ A toolbar appears in the upper-right corner of the screen.

- 2** Display the screen that you wish to print.

- 3** Tap  on the toolbar.


→ The captured screen appears in the Print preview screen.



The procedure continues in the same way as with the Note Print (→ page 18).

## ■ Screen capture settings


The time until the data is imported and the size of the captured area can be specified.

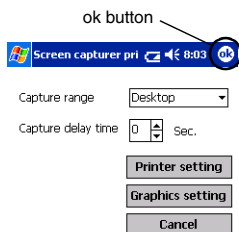
- 1 Tap  on the tool-bar.




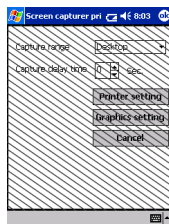
→ The Screen capture print settings screen appears.

- 2 The following text settings can be specified.

- Capture delay time:  
0 to 10 seconds  
Specifies the length of time until the image is imported after  is tapped.



- Capture range:  
Selection range (Use the stylus to select the desired area.)/Client  
(Area indicated by  in the illustration at the right)/Desktop (Entire screen)



- 3 Tap .

→ The screen capture settings are applied.

## Image File Print

Saved image files (in BMP, JPEG or PNG format) can be printed.

**1** Tap the Start button, tap **Programs**, and then



→ The Image File Print screen appears.

**2** Select the file format of the image data to be searched for.

Select from the five available file formats.

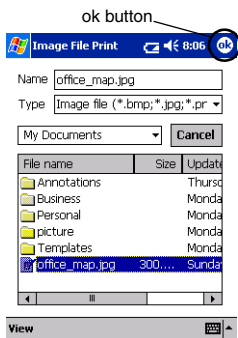
- Image file (BMP, JPG or PNG)
- Bitmap file
- Jpeg file (JPG or JPEG)
- Png file
- All files

**3** Tap the image file that you wish to print.  
Only one file can be selected.

→ The selected file is highlighted.

**4** Tap  .

→ The Print preview screen appears.



The procedure continues in the same way as with the Note Print (→ page 18).

## E-mail Print

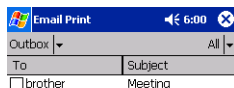
Saved e-mails can be printed.

**1** Tap the Start button, tap **Programs**, and then

tap  .  
E-mail Print

→ A list of e-mails appears in the Email Print screen.

**2** Tap the e-mail that you wish to print.  
Only one e-mail can be selected.



→ The selected e-mail is highlighted.



- The layout in which data is printed can be specified.  
(→ “Template setting” on page 25)

The procedure continues in the same way as with the Note Print (→ page 18).

---

## **Uninstalling the software**

---

Uninstall (remove) the software using the Pocket PC functions. For details on uninstalling the software, refer to the instruction manual for the Pocket PC.

# PrintPocketCE for Brother

## What is this software?

PrintPocketCE enables you to print out the following data from your PDA running Microsoft® Pocket PC/Pocket PC2002.

- Pocket Excel spreadsheets
- Pocket Word documents
- E-mail
- Pocket RTF (rich text format) & Plain text (txt)

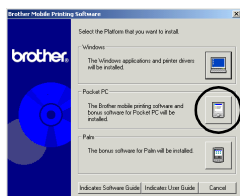
## Installing the software

**1** Insert the enclosed CD-ROM into the CD-ROM driver of the computer running Windows®.

→ The installer automatically starts up and Brother Mobile Printing Software dialog box appears.

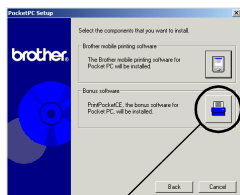
**2** Click the second button (Pocket PC).

→ The PocketPC Setup dialog box appears.



**3** Click the second button (Bonus software).

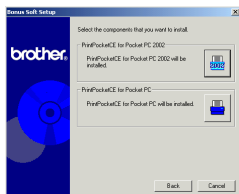
→ A dialog box appears asking you to select either "Print Pocket CE for Pocket PC" or "Print Pocket CE for Pocket PC2002".



Bonus software

**4** Click the button for the operating system that you are using.

→ The installation program will run automatically. The computer connects with the PDA via ActiveSync and the installation is complete.



- For details on using Print Pocket CE for Brother, refer to the Help for Print Pocket CE for Brother.

## 4 Printing Data From a Palm™ Device

### IrPRINT™ for Palm™

#### What is this software?

IrPRINT™ enables you to print out the following data from your PDA running Palm™ OS ver. 3.x or ver. 4.x.

- Documents To Go
- Sheets To Go
- PIM data (Address Book, Memo Pad, Date Book, To Do List, and Mail)

#### Installing the software

**1** Insert the enclosed CD-ROM into the CD-ROM driver of the computer running Windows®.

- The installer automatically starts up and Brother Mobile Printing Software dialog box appears.
- If the installer does not automatically start up, double-click “My Computer”, and then double-click \*\*.

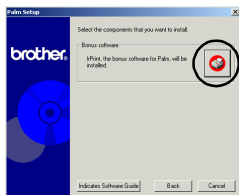
**2** Click the bottom button (Palm).

- A dialog box appears, allowing you to select what to install.



- 3** Click the Bonus software button.  
→ The installer starts up.

Follow the instructions that appear to finish the installation.



After the installation is finished, connect the Palm<sup>TM</sup> Computing<sup>®</sup> device to the Windows<sup>®</sup> computer where IrPRINT<sup>TM</sup> is installed, and then perform the HotSync<sup>TM</sup> operation. (The operation of the Palm<sup>TM</sup> Computing<sup>®</sup> device differs according to the manufacturer. Refer to the instruction manual for the Palm<sup>TM</sup> Computing<sup>®</sup> device that you are using.)

**brother**®