



Mac Driver Installation Guide for Brother Label Printers

Contents

Trademarks 1

1. Install the Printer Driver..... 2

2. Change the Driver Settings 10

3. Specify a Label Size in the Printer Driver..... 12

Trademarks

Apple, Macintosh, Safari, iPad, iPhone, iPod touch, iPod, Mac and macOS are trademarks of Apple Inc.

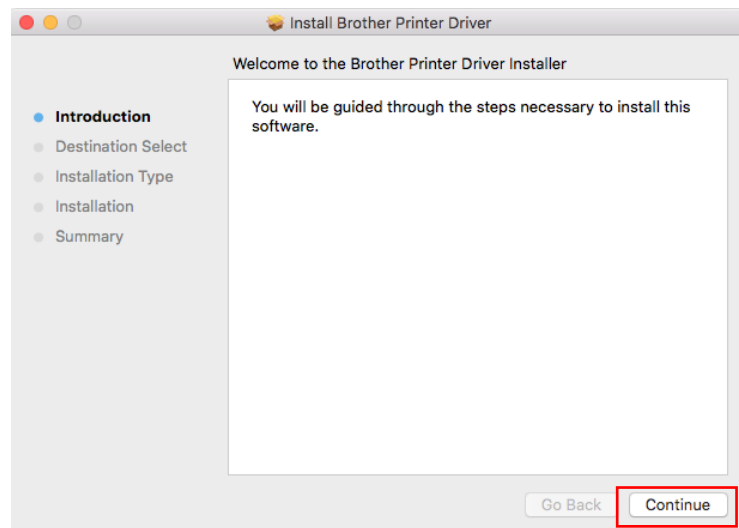
1. Install the Printer Driver

To install your printer's driver on a Mac, download the driver from support.brother.com, and then do the following:

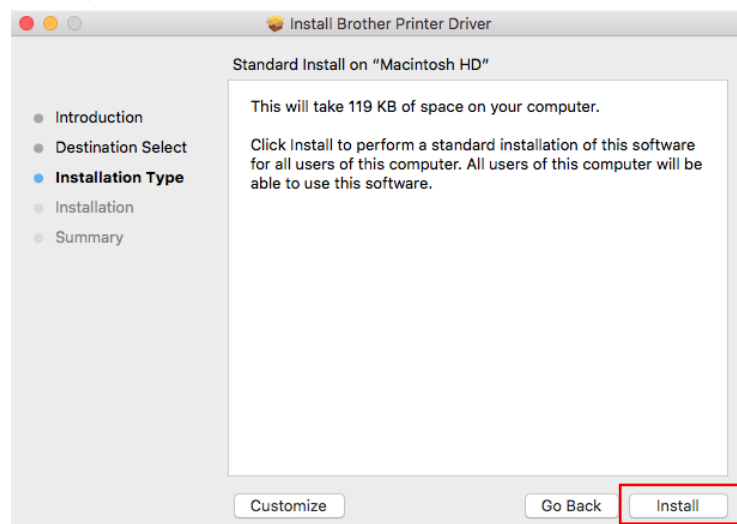
1. Double-click the downloaded PKG file.



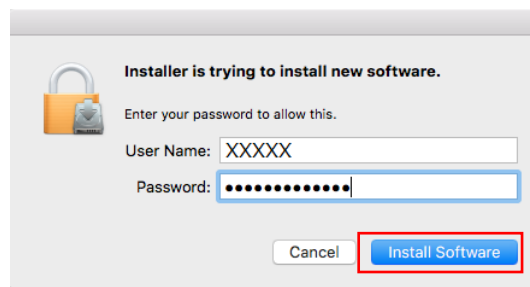
2. Click **Continue**.



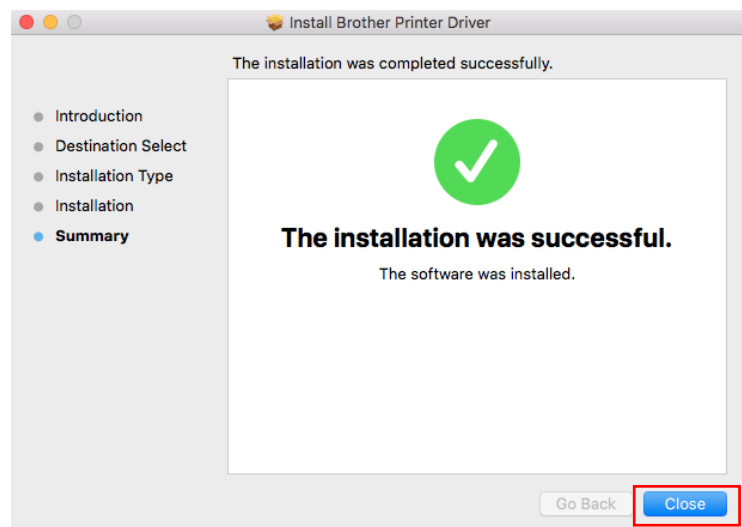
3. The Installation Type information appears. Click **Install**.



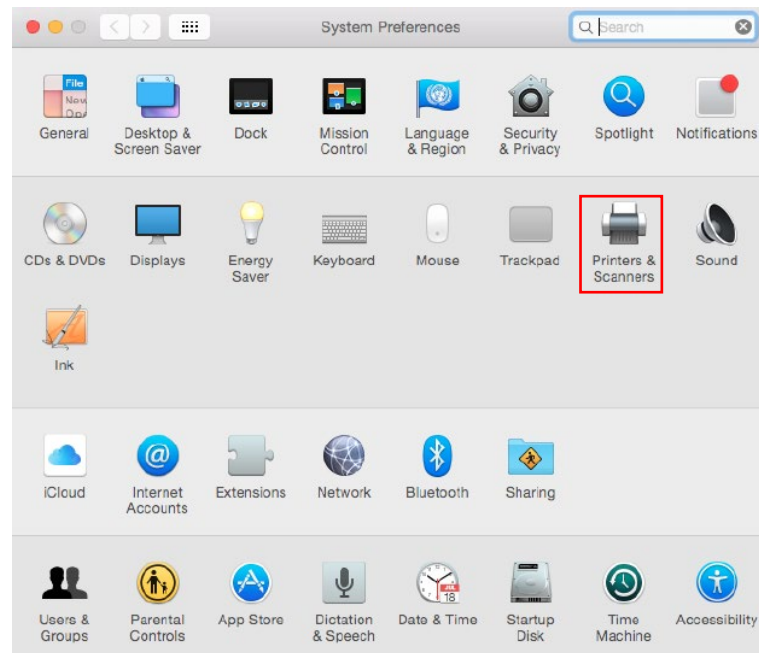
4. Enter the **User Name** and **Password**, and then click the **Install Software** button.



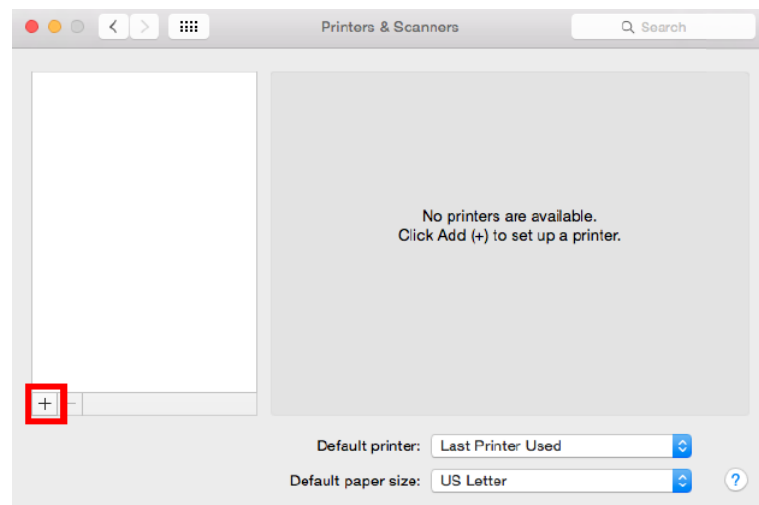
5. Click **Close**.



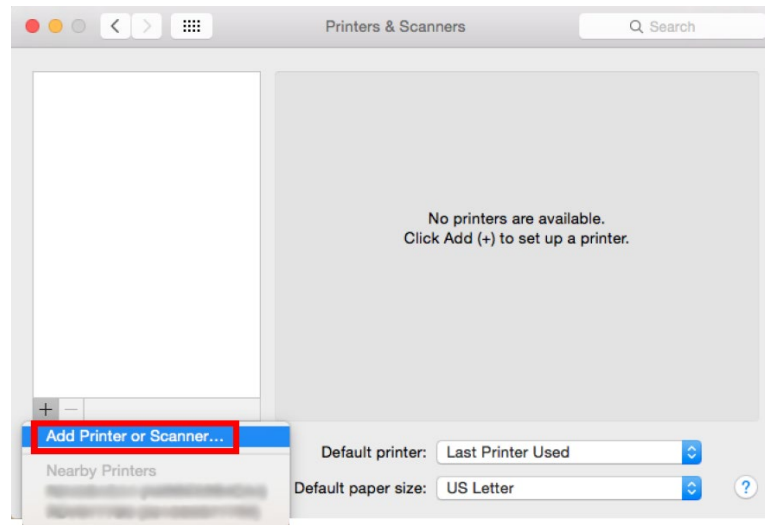
6. Go to **System Preferences > Printers & Scanners**.



7. Click the **Add (+)** button to set up a printer.



8. Select **Add Printer or Scanner...** from the pop-up menu.



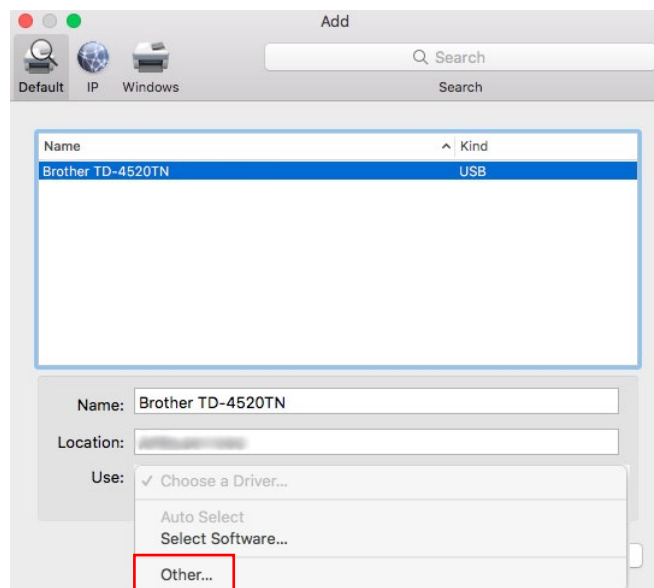
NOTE

Installation methods:

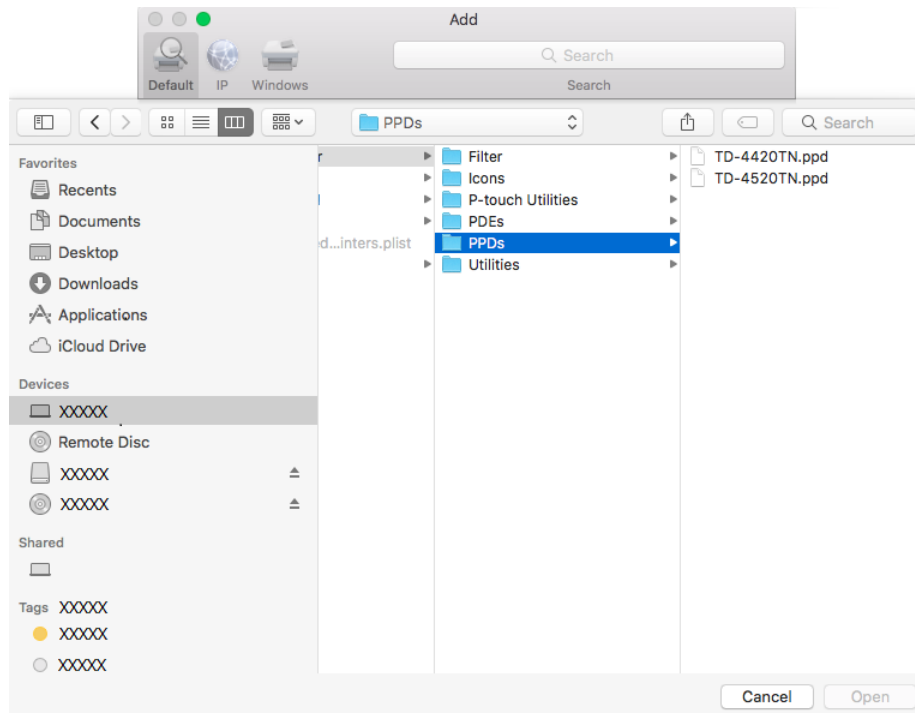
- * When using a USB connection, proceed to **Step 9**.
 - * When using a wired LAN or Wi-Fi connection, proceed to **Step 13**.
- The Mac driver does not support Bluetooth connection.
-

9. Connect your printer to the Mac using a USB cable and do the following:

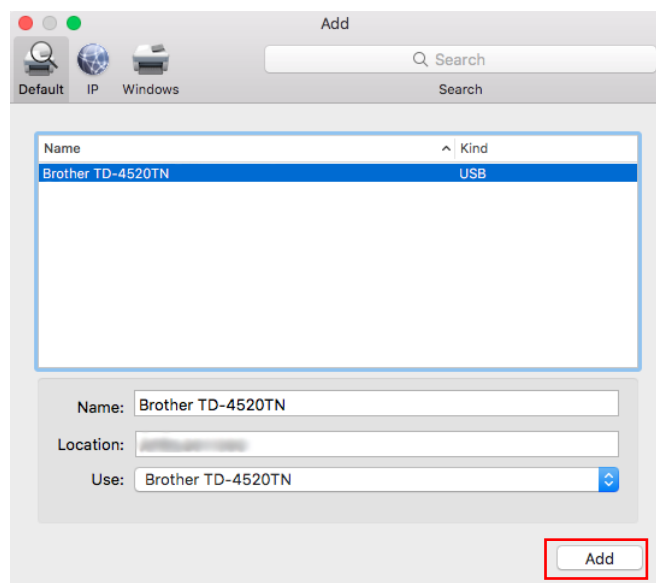
- Select the printer model name.
- Select **Other...** from the **Use** pop-up menu.



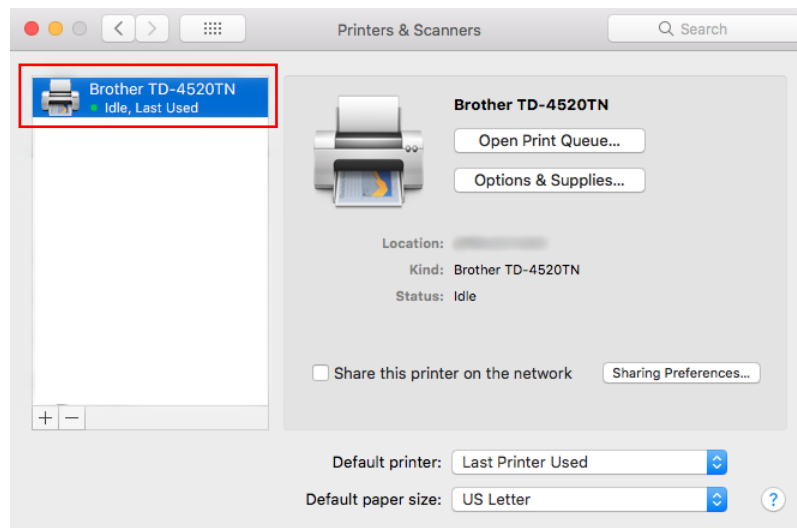
10. In Finder, go to **Devices > Macintosh HD > Library > Printers > Brother > PPDs**, and then select your printer model's PPD file.



11. Make sure your printer name is listed in the **Use** field, and then click **Add** to install the driver.



12. When finished, your printer will appear in the **Printers & Scanners** dialog box.



- USB Connection: The driver installation is completed.
- Wired LAN or Wi-Fi Connection: Go to step 13.

13. Configure the network settings:

- Using the BPM
 - a. Connect your printer to the Windows computer using a USB cable.
 - b. Click **Printer Configuration > Wi-Fi**.
 - c. Specify **SSID**, **Encryption**, and **Key** (Network Password), and then click **Set**.
 - d. Click **Get** and confirm that the printer's IP address is correct.
When finished, the Wi-Fi icon and printer's IP address appear on the LCD.
- Using the LCD
 - a. Select **Interface > Wi-Fi**.
 - b. Specify **SSID**, **Encryption**, and **Password**.
 - c. When finished, the Wi-Fi icon and printer's IP address appear on the LCD.

14. Add the IP Address.

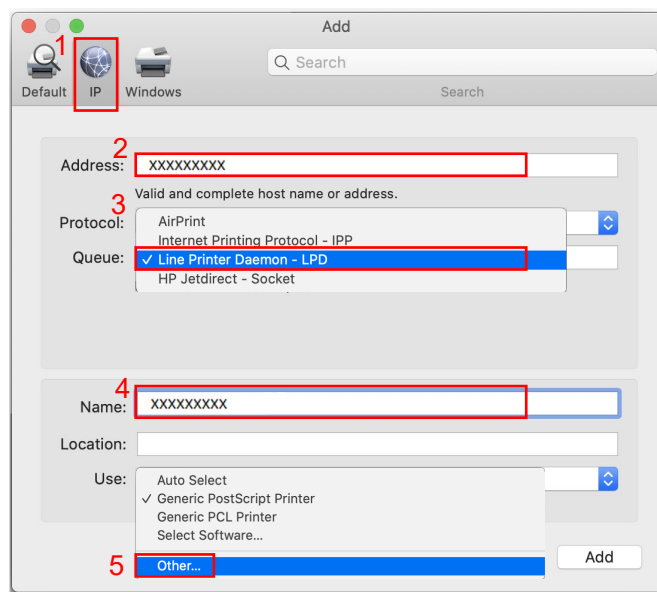
1. Click the **IP** icon.
2. Enter the IP address in **Address**.
3. Select **Line Printer Daemon - LPD** from the **Protocol** pop-up menu.

NOTE

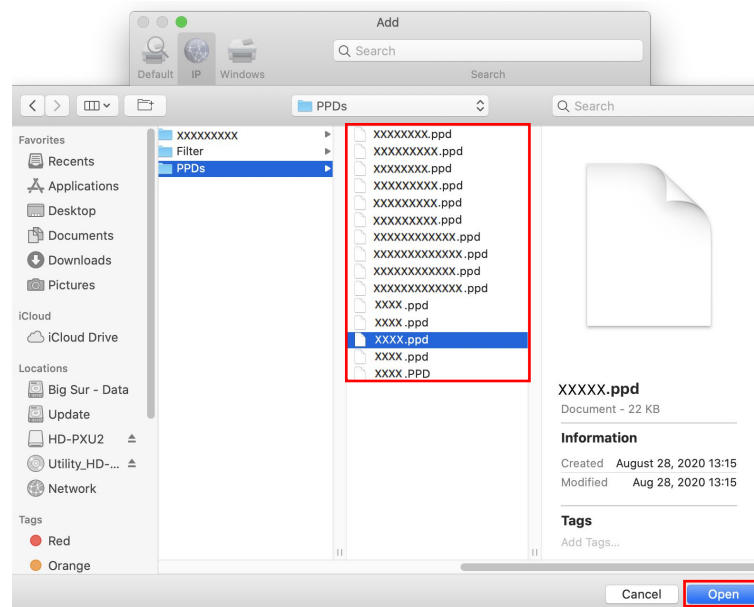
(For models: TD-4650TNWB/TD-4750TNWB/TD-4650TNWBR/
TD-4750TNWBR/RJ-2055WB/RJ-3055WB)

When using Wi-Fi, select **HP Jetdirect - Socket**.

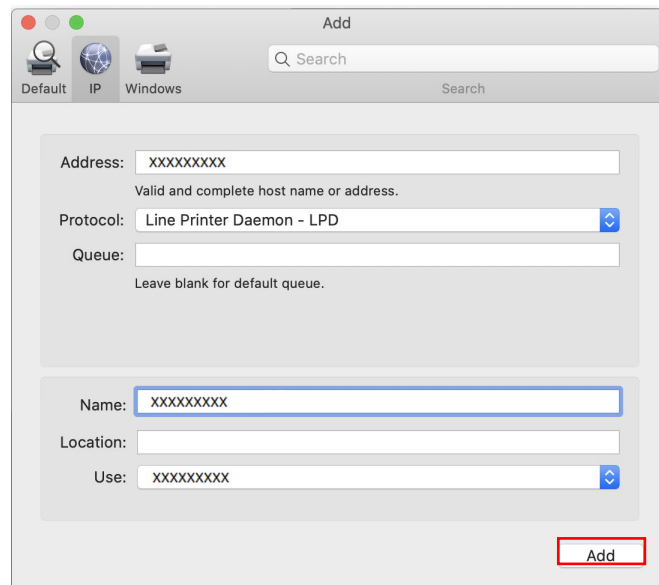
4. Enter a printer name in **Name**.
5. Select **Other...** from the **Use** pop-up menu.



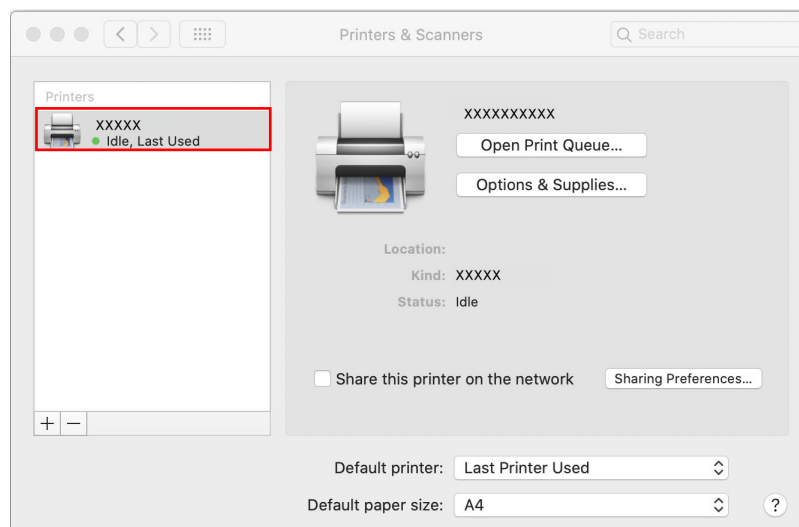
15. In Finder, go to **Devices > Macintosh HD > Library > Printers > Brother > PPDs**.
Select your printer model's PPD file and click **Open**.



16. Click **Add**.



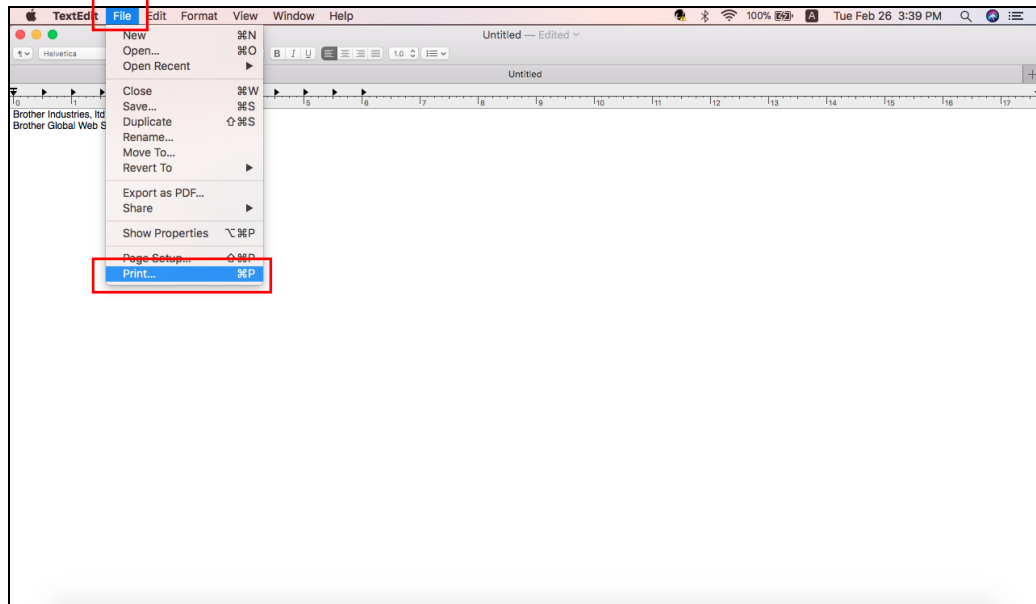
17. The printer driver has been added.



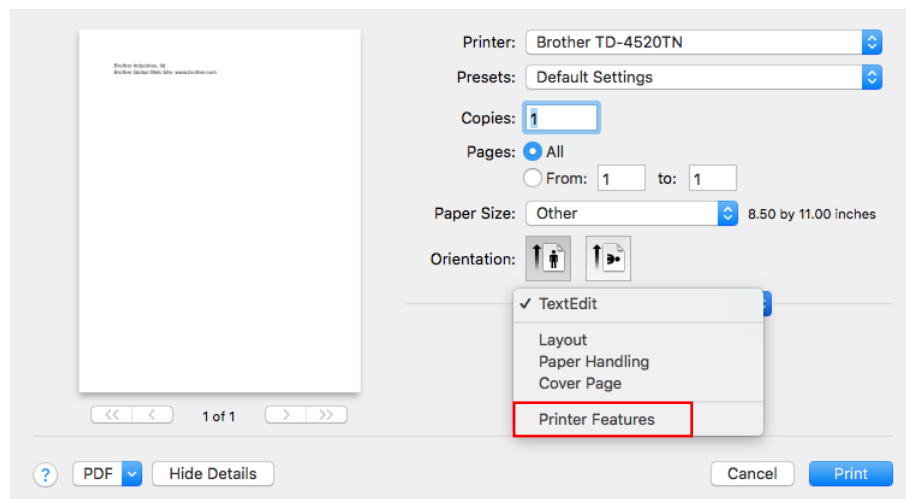
2. Change the Driver Settings

To change print settings, use the **Print** dialog box. This example shows TextEdit.

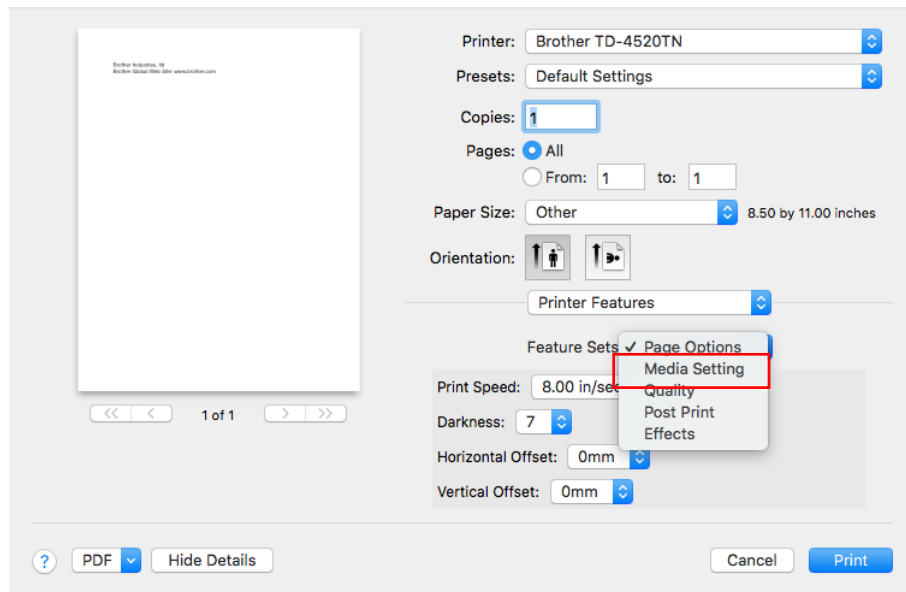
1. Open the file you want in TextEdit, and then click **File > Print**.



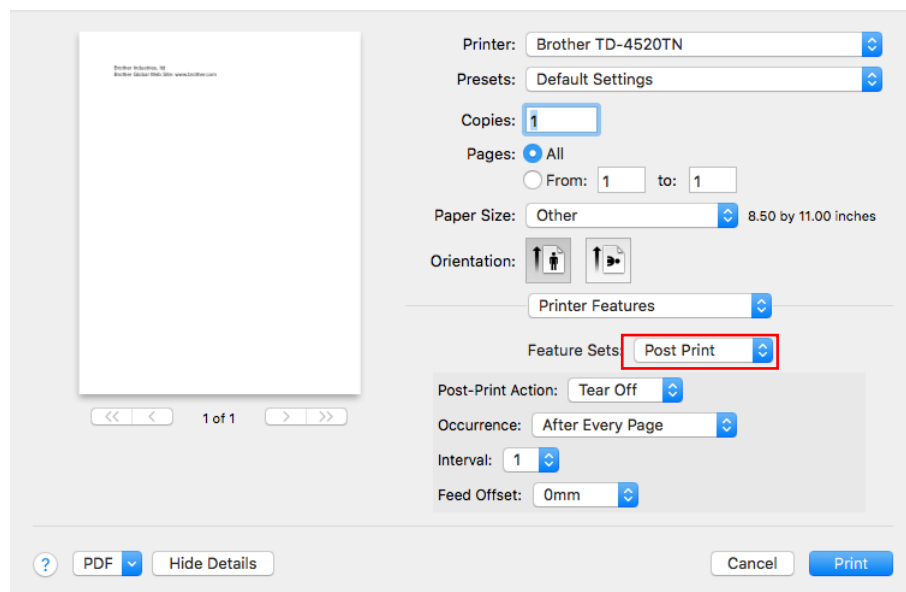
2. Change **TextEdit** to **Printer Features** in the pop-up menu.



3. Select **Media Setting** from the **Feature Sets** pop-up menu, and then specify the settings you want.



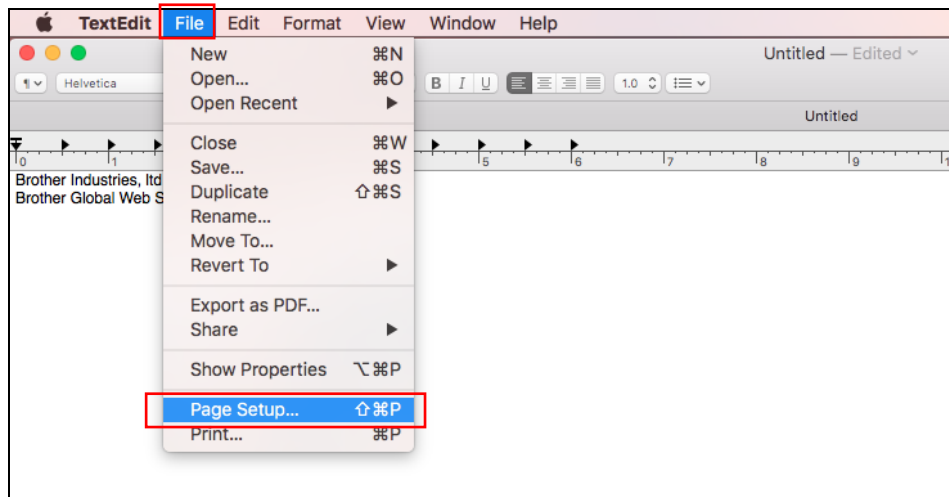
4. Select **Post Print** from the **Feature Sets** pop-up menu, and then specify the settings you want.



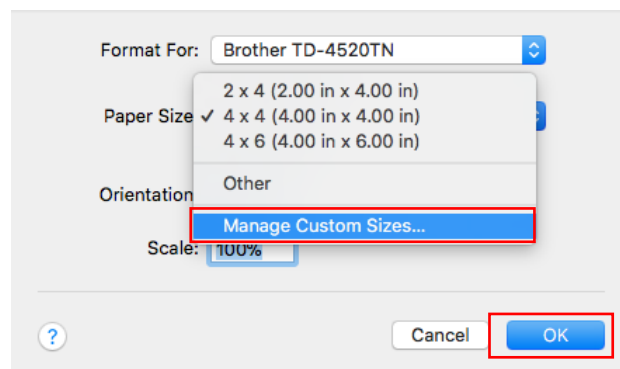
3. Specify a Label Size in the Printer Driver

To specify the label size, use the Page Setup dialog box. This example shows TextEdit.

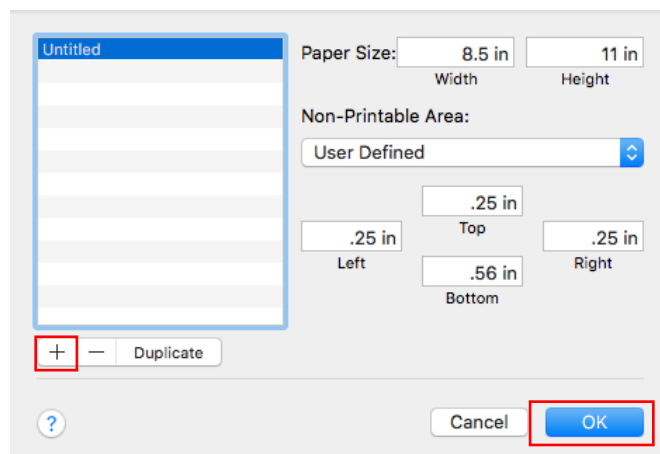
1. Open the file you want in TextEdit, and then click **File > Page Setup**.



2. Select **Manage Custom Size...** from the **Paper Size** pop-up menu, and then click **OK**.



3. Click the **Add (+)** button to specify the label size, and then click **OK**.



4. Press the <tab> key, and then enter a name for the new label size.
5. Press the <tab> key, and specify the size settings in the **Paper Size** and **Non-Printable Area** sections, and then click **OK**.

4x8

Paper Size: 4 in 8 in
Width Height

Non-Printable Area:
User Defined

.25 in .25 in
Top
.25 in .25 in
Left Bottom Right

+ - Duplicate

? Cancel OK

6. Select your newly defined size preset from the **Paper Size** pop-up menu. Click **OK**.

Format For: Brother TD-4520TN
Brother TD-4520TN

Paper Size: 4 x 8
400 by 8.00 inches

Orientation: [Portrait Icon] [Landscape Icon]

Scale: 100%

? Cancel OK

brother