

## Setting Up the machine and PC to Work Together

### Before You begin

- Please see the README.WRI file in the root directory of the CD-ROM for the latest important installation and troubleshooting information.
- If you have any problems with this installation, visit us at <http://solutions.brother.com> and view the FAQ's for your machine.
- Please purchase the appropriate interface cable you intend to use with this machine (parallel or USB).
- Some illustrations are based on the MFC-8500.

 Use only a shielded parallel interface cable that is IEEE 1284-compliant and/or a USB cable that is no longer than 6 feet long (1.8 meters).


**You must set up the hardware and install the driver before you can use your machine as a printer and scanner with your applications.**

**Step 1.** Shut down and turn OFF your computer.

**Step 2.** Unplug the FAX/MFC machine from the AC outlet and disconnect the interface cable if you have already connected it.

**Step 3.** Turn on your computer.

**Note:** If the "Found New Hardware Wizard" appears before the installation of the software, you should click on Cancel to exit the Wizard, and then start the installation program from the CD-ROM.

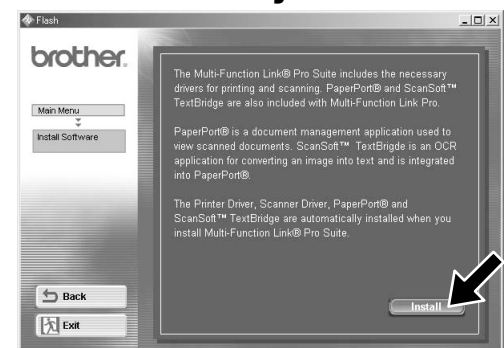
**Step 4.**  Insert the CD-ROM into the CD-ROM drive. If the model name screen appears, click on your model name. The CD-ROM main menu will appear. If the CD-ROM does NOT start automatically, start the installer application by clicking Start, Run, then type x:\setup.exe (where x:\ is the drive letter of your CD-ROM drive).



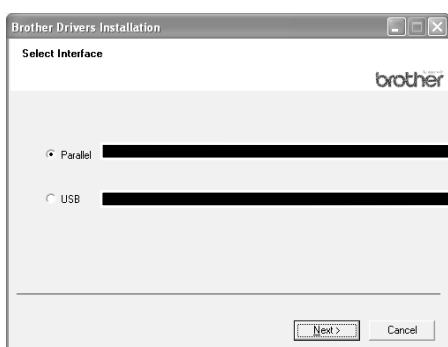
1. Click Install Software.



2. Click Multi-Function Link® Pro Suite in Main Application. \*1

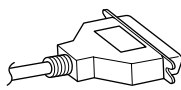


3. Click Install.

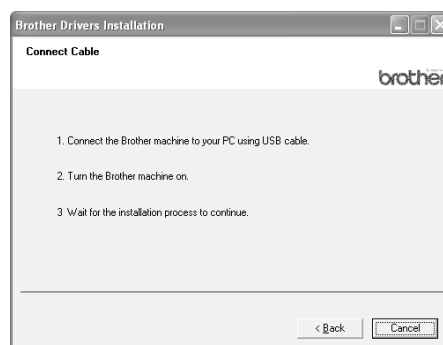
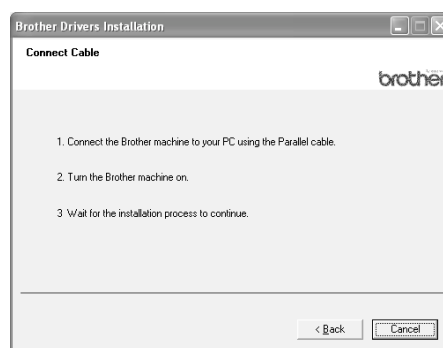
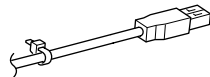


4. Select an interface cable, and then press Next.

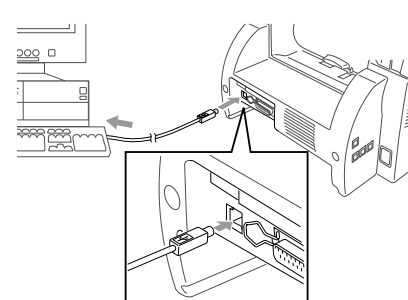
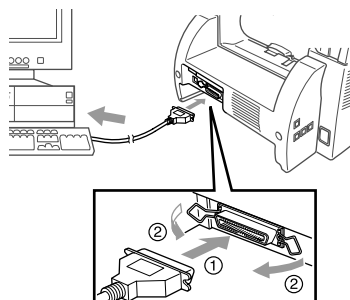
For Parallel



For USB



**Step 5.** Connect the machine to your PC using the parallel or USB cable.



Please see STEP 6

\*1 Multi-Function Link® Pro Suite includes Printer Driver, Scanner Driver, PC-FAX software and Remote Setup.  
Scanner resolution: Up to 600 dpi  
Paper size: 8.5" (215.9 mm) × 11.7" (297 mm)

## Step 6.

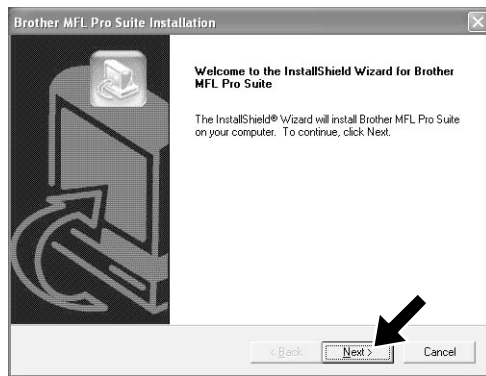
Turn on the machine by plugging in the power cord (and if necessary switch on the machine power switch).

The installation of the Brother drivers will start automatically.

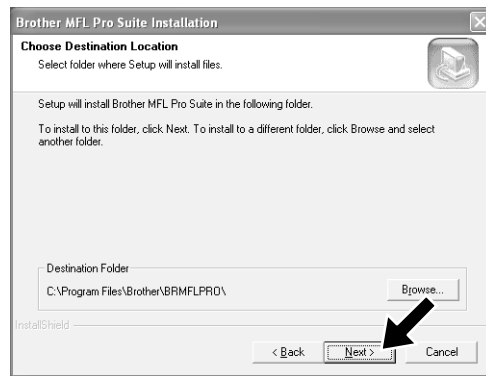
## Step 7.

Follow the instructions on the screen.

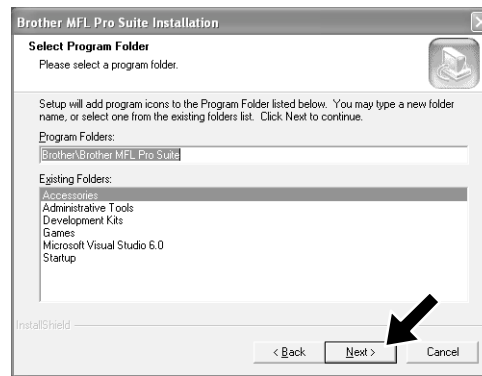
**Note: If you are installing a DCP model, installation is complete.**



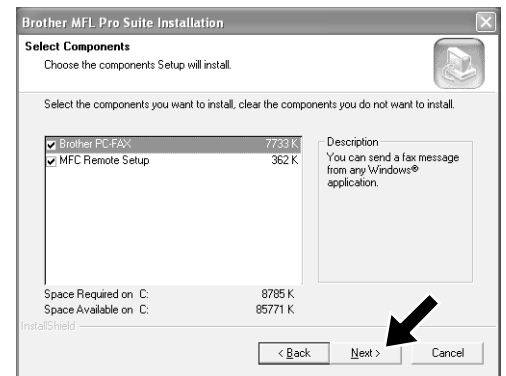
1. When the above screen appears, click **Next** to start the PC-FAX and Remote Setup Installation Program.



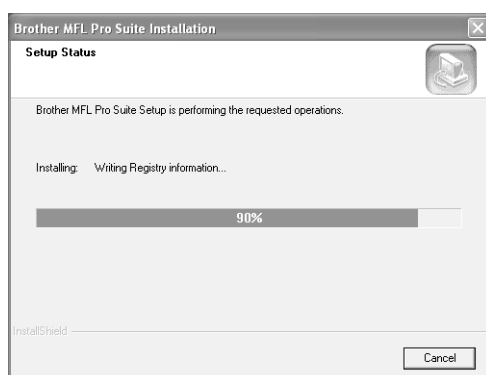
2. Select the folder where Setup will install the program files. If you do not wish to use the default directory, click the **Browse** button to select a new folder and then click **Next** to continue.



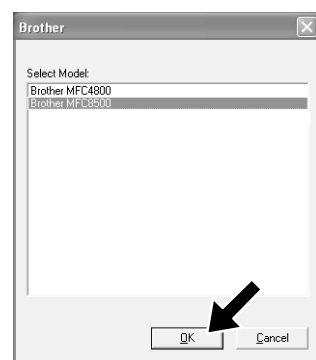
3. Select the program folder in which you wish to add the program icons, and then click **Next**.



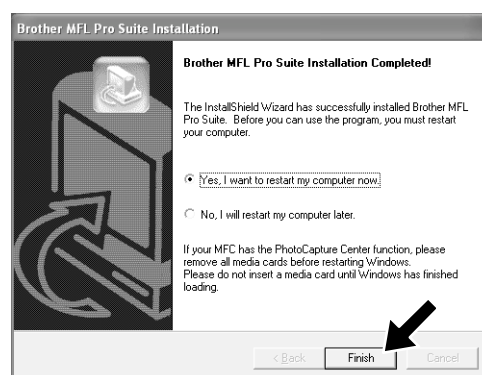
4. If this screen appears, select the components to install (the default gives you the most functionality), and then click **Next**.



5. The installation process will now start.



6. If this screen appears, select the model of the machine which you want to use to send PC-Faxes then click **OK**.



7. Select "Yes" to restart your computer, and then click **Finish**.



If you want to install the printer driver with the full capability, follow these instructions.

\* If you are using Windows XP Professional,  
Click on **Start** → **Printer and Faxes** → **Add a printer**.

\* If you are using Windows XP Home Edition,  
Click on **Start** → **Control Panel** → **Printer and other hardware** → **Printer and Faxes** → **Add a printer**.

1. Click on **Next**.
2. Check of **Automatically detect and install my plug and play printer**, and select **Local printer attached to this computer**.
3. Click on **Next**.
4. Select the printer port and click on **Next**.
5. Click on **Have Disk** and click on **Browse**.
6. Open the directory X:\WXP\ADDPRT.
7. Click on **OK**.
8. Follow the screen.

NOTE: Warning message might be appeared, and click on **Continue Anyway**.

## What is included on the CD-ROM

You can get a variety of information from this CD-ROM



### Install Software

You can install printer and scanner drivers and the various utility items.

### On-Line Registration

You will be guided to a directory on the Brother Product Registration Web page.

### On-Line Documentation

View the Owner's Manual and other documentation.

### Brother Support

Get all the help and support you may need from our Customer Service Department, or Brother Authorized Service Center.

### Help

Helpful hints.

### Trademarks

The Brother logo and Multi-Function Link Pro are registered trademarks of Brother Industries, Ltd.

© Copyright 2002 Brother Industries, Ltd. All rights reserved.

Windows and Microsoft are registered trademarks of Microsoft in the U.S. and other countries.