

THANK YOU!

... FOR PURCHASING YOUR BROTHER MACHINE.
WE ARE SURE YOU WILL BE IMPRESSED WITH THE CONVENIENT WAY THAT YOUR
NEW MACHINE PERFORMS SO MANY TASKS WITH GREAT RESULTS!

Follow these simple instructions in numerical order.

For greater detail, consult your Owner's Manual and CD-ROM.

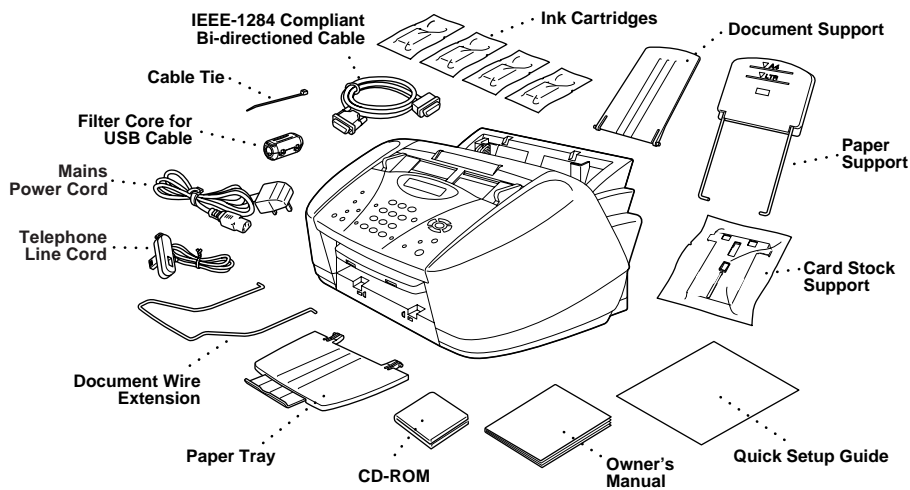
Alternatively, if you cannot solve a problem:

Refer to **Frequently Asked Questions (FAQ's)** on Brother Solutions Web Site:

URL: <http://solutions.brother.com>

Call Brother Customer Service at: 0161 931 2354

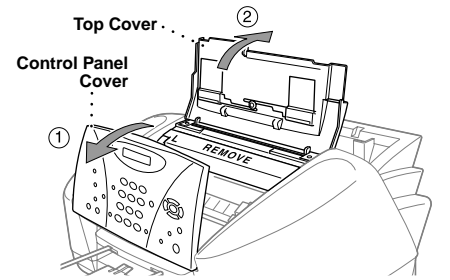
1 Packing List



ⓘ Keep the packing materials for possible future transport. If you do not pack the machine properly, it may void your warranty.

2 Remove the Protective Yellow Bar

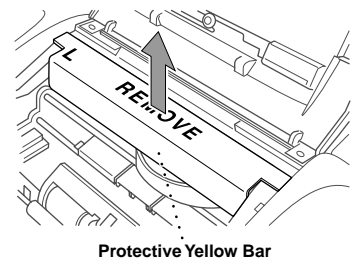
A. Open the control panel cover by pulling it toward you (①), and then lift the top cover toward the back (②).



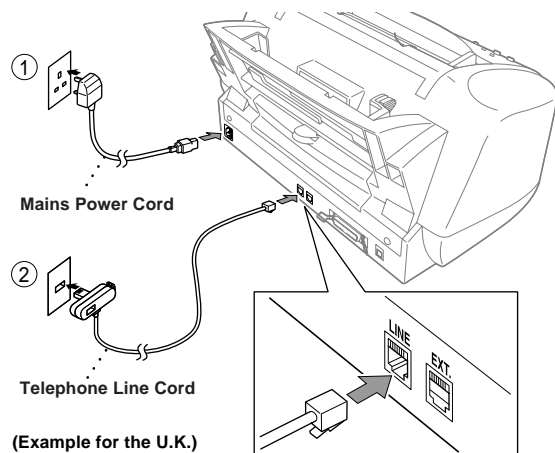
B. Pull the protective yellow bar out of the machine.

ⓘ Do not throw away the protective yellow bar. You will need it for future transportation.

C. Close the top cover, and then close the control panel cover.

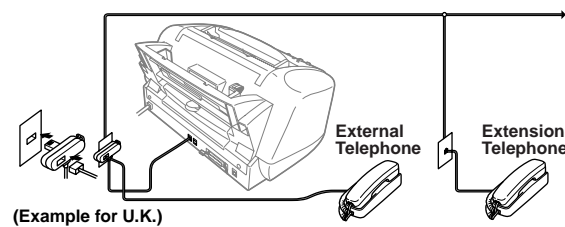


3 Install Mains Power Cord and Telephone Line Cord



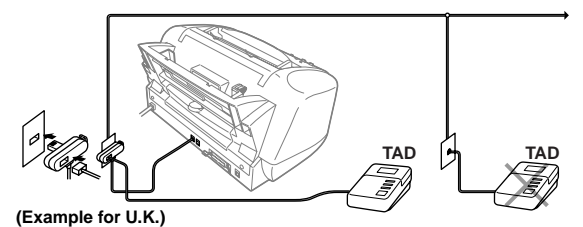
ⓘ Complete reading this guide before connecting the Parallel or USB cables.

4 If you are sharing one phone line with an external or extension telephone, connect it as shown below.



(Example for U.K.)

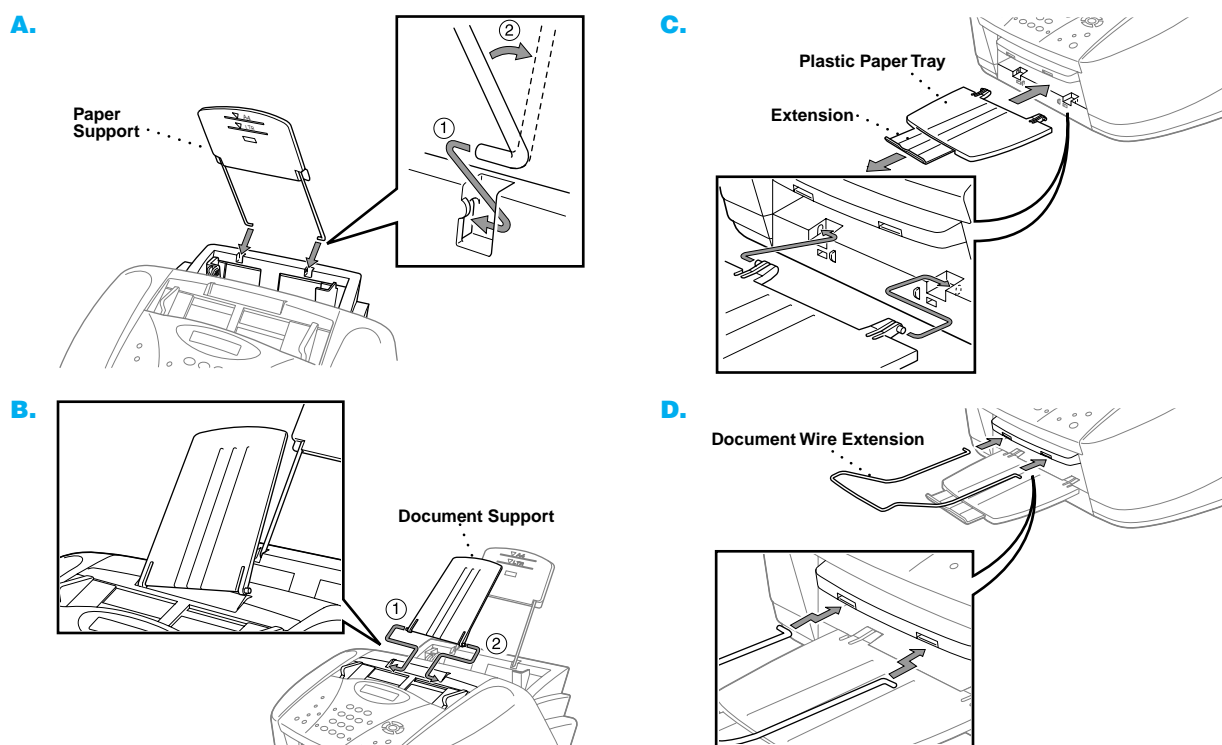
! If you are sharing one phone line with an external telephone answering device (TAD), connect it as shown below.



(Example for U.K.)

Note: If you are using an external answering machine, "TAD" should be selected as the receive mode in Step 9 on Page 3 of this guide.

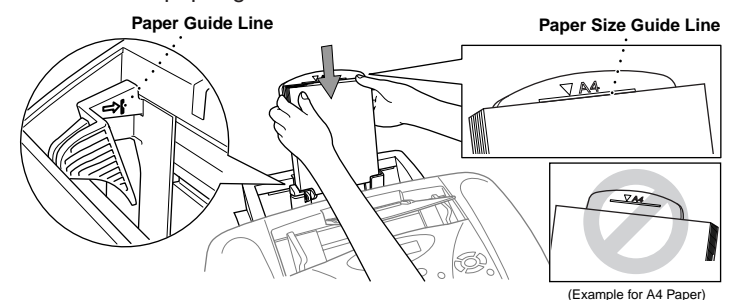
5 Attach Trays and Extensions



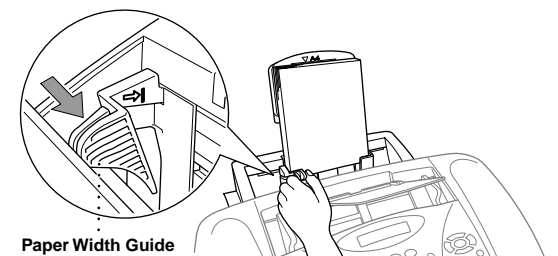
ⓘ Please attach the trays to prevent jams and to maintain print quality.

6 Load Paper

A. Fan the paper well. Make sure the print side is toward you. Gently insert the paper so that the top of the paper is aligned with the paper size guide line and the paper level is stacked below the paper guide line.



B. Press and slide guide to fit the paper width.



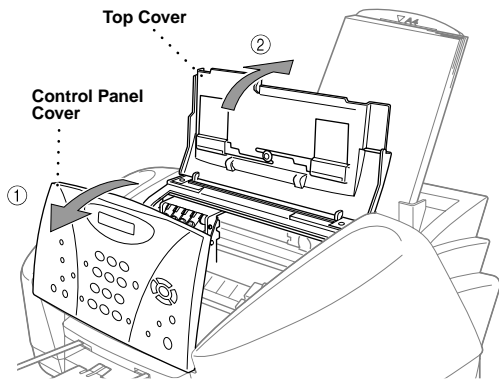
Note: The feeder can hold up to 100 sheets of 75 g/m² paper. For details, see *Paper Specifications* in Owner's Manual.

7 Install the Ink Cartridges

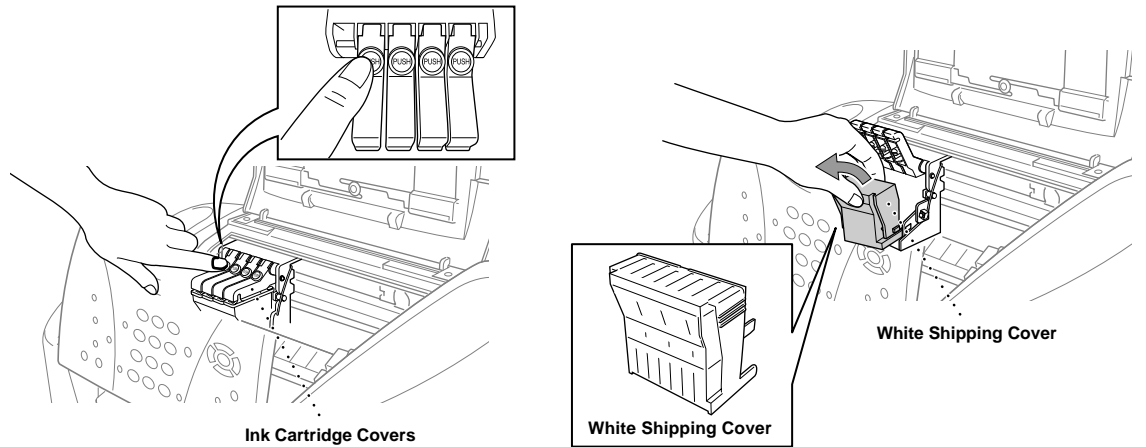
A. Check that the power is turned on (by plugging in the power cord).
The LCD shows:

CHECK CARTRIDGE

B. Open the control panel cover by pulling it toward you (1), then lift the top cover toward the back (2). After a few seconds, the print head will move left to its replacement position.



- ! The bottom of the white shipping cover is wet with ink that will cause stains, so wipe it clean before you place it down.
 - Do not throw away the white shipping cover. You will need it for future transportation.
- C.** Push the four coloured ink cartridge covers one at a time so they pop up. Then remove the white shipping cover by pulling it toward you and then lifting it up and out.



! WARNING

If ink gets in your eyes, rinse them with water immediately and if irritation occurs, consult a doctor.

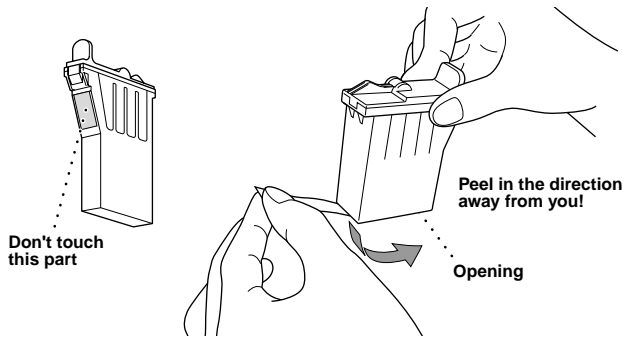
! We recommend that you install the ink cartridges from left to right in this order: Black, Cyan, Yellow, Magenta.

D. Open the Black ink cartridge bag and take out the ink cartridge.

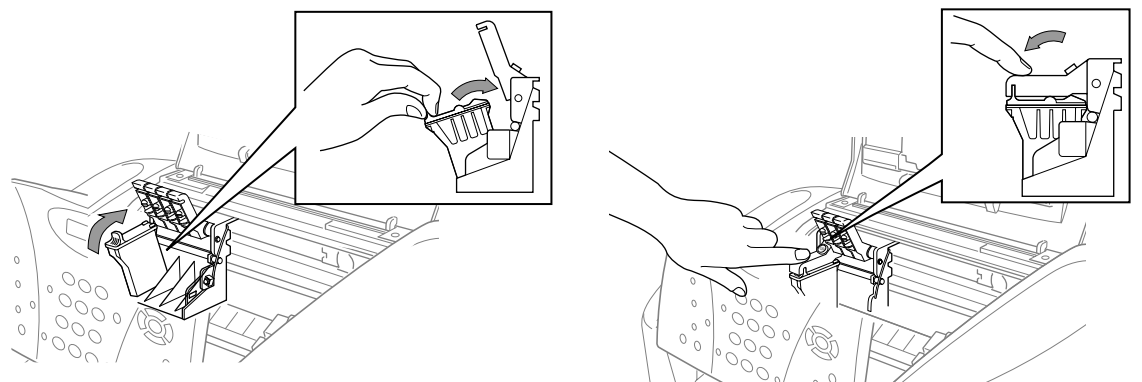
E. Carefully remove the sealing tape from the bottom of the ink cartridge. You should peel the tape in the direction away from you.

Important

To prevent spilling ink and staining your hands and clothing, peel the sealing tape gently and slowly. Do not touch the ink opening on the cartridge or the removed tape.



F. Each colour has its own correct position. Match the colours of the ink cartridge covers, First, gently insert the Black ink cartridge, and then press the cover down until it clicks.



G. Repeat Steps D-F to install each colour ink cartridge.

H. After installing all ink cartridges, close the top cover and control panel cover until they click into place. Your MFC will enter a "head cleaning" cycle for approximately **four minutes**.

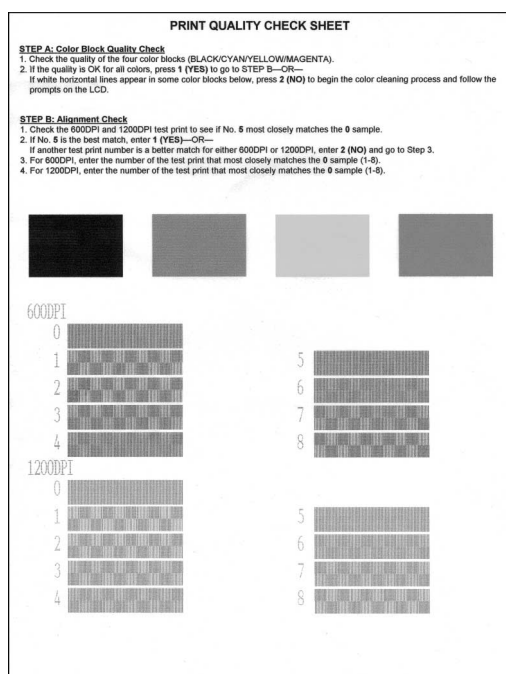
! Make sure the paper is loaded in the multi-purpose sheet feeder. The LCD shows **CLEANING**. After the cleaning cycle is finished, the LCD shows **PRESS FAX START**.

I. Press **Mono Fax Start** and go to Step 8 "Check Colour Block Quality and Alignment".

8 Check Colour Block Quality and Alignment

The MFC starts printing the PRINT QUALITY CHECK SHEET (only during initial ink cartridge installation).

Check the sheet to see if the quality and alignment are OK by following steps A and B.



STEP A: Colour Block Quality Check

The LCD shows:

IS STEP "A" OK?
1. YES 2. NO

Check the quality of the four colour blocks printed on the sheet. (BLACK/CYAN/YELLOW/MAGENTA).

If the quality is OK for all colours, press (1) (YES) to go to **STEP B**.

—OR—

If white horizontal lines appear in some colour blocks below, press (2) (NO).



The LCD asks you if the print quality is OK for each colour.

BLACK OK?
1. YES 2. NO

Press (2) (NO) for any colour with a problem.

The LCD shows:

START CLEANING?
1. YES 2. NO

Press (1) (YES), then MFC starts cleaning the colours.

After cleaning is finished, press **Mono Fax Start**. The MFC starts printing PRINT QUALITY CHECK SHEET again and goes back to the first step of **STEP A**.

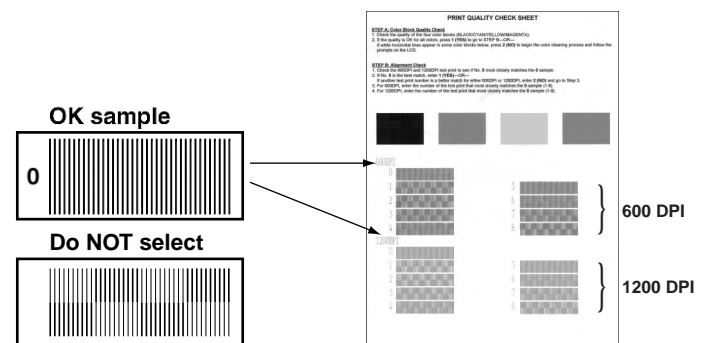
STEP B: Alignment Check

The LCD shows:

IS STEP "B" OK?
1. YES 2. NO

Check the 600DPI and 1200DPI test print to see if No.5 most closely matches the **OK** sample (0).

If No.5 is the best match, enter (1) (YES)—OR—



If another test print number is a better match for either 600DPI or 1200DPI, enter (2) (NO) to select it.

For 600DPI, enter the number of the test print that most closely matches the 0 sample (1-8).

600DPI ADJUST
SELECT BEST #

For 1200DPI, enter the number of the test print that most closely matches the 0 sample (1-8).

1200DPI ADJUST
SELECT BEST #



MFC-580 Control Panel



- * Access the Menu
- * Go to next menu level
- * Accept an option



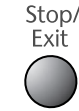
- * Scroll through the current menu level



- * Back to previous menu level



- * Forward to next menu level



- * Exit the Menu

9 Select a Receive Mode

Choose the mode that best suits your needs.

- Press **Menu/Set**, (2), (1), (2).
- Press or to select **FAX ONLY**, **FAX/TEL**, **TAD:ANSWER MACH.**, **MANUAL** mode, and press **Menu/Set**.
- Press **Stop/Exit**.

FAX ONLY

For use with a dedicated fax line.
Every call is answered as a fax.

FAX/TEL (with an External Telephone)

For receiving fax and voice calls on one line.
The machine answers every call and receives a fax or pseudo rings for you to pick up a voice call.

TAD:ANSWER MACH. (with an External Answering Machine)

For use with an external answering device.
The TAD answers every call and stores voice messages.
Fax messages are printed.

MANUAL (with an External Telephone)

You control the phone line and must answer every call yourself.

For more details, see *Receive Mode Settings* in Owner's Manual.

10 Set Date and Time

Your MFC displays the date and time, and prints it on every fax you send.

- Press **Menu/Set**, (1), (2).

2. DATE/TIME
YEAR: XX

- Enter the last two digits of the year and press **Menu/Set**.

MONTH: XX

- Enter two digits for the month and press **Menu/Set**.

DAY: XX

- Enter two digits for the day and press **Menu/Set**.

TIME: XX:XX

- Enter the time in 24-hour format and press **Menu/Set**.

- Press **Stop/Exit**.

Note: If you can't step forward, press **Stop/Exit** and repeat from step A.

11 Set Station ID

You should store your name and fax number to be printed on all fax pages you send.

- Press **Menu/Set**, (1), (3).

3. STATION ID
FAX: _____

- Enter your fax number, then press **Menu/Set**.

NAME: _____

- Enter your name using the dial pad and the chart below, then press **Menu/Set**. Use the right arrow to create spaces.

Press Key	once	twice	three times	four times	five times
2	A	B	C	2	A
3	D	E	F	3	D
4	G	H	I	4	G
5	J	K	L	5	J
6	M	N	O	6	M
7	P	Q	R	7	P
8	T	U	V	8	T
9	W	X	Y	9	W

- Press **Stop/Exit**.

For more details, see *Entering Text* in Owner's Manual.

Note: If you can't step forward, press **Stop/Exit** and repeat from step A.



For Improving Print Quality

If horizontal streaks appear like this, clean the print head.

(See *Cleaning the Print Head* in Owner's Manual or visit us at <http://solutions.brother.com>)



If characters and lines are stacked like this, check alignment.

(See *Print Quality Check* in Owner's Manual or visit us at <http://solutions.brother.com>)

Beneath the lead
orioles. Ge
elephants, bears, t
With this na
for its care and p

To encourage a
eed to preserve

Beneath the le
d orioles. G
elephants, bears, ti
With this na
for its care and p

To encourage a
eed to preserve

Setting Up the MFC and PC to Work Together

Version B

Before You begin

- You must set up the hardware and install the Brother Drivers before you can use your MFC as a printer and scanner in any Windows® application.
- If you need a USB cable, you will need to purchase it.
- If you have any problem for installation, visit us at: <http://solutions.brother.com>

! Use only a shielded parallel interface cable that is IEEE 1284-compliant and/or a USB cable that is no longer than 6 feet long (1.8 metres).

Follow the instructions in this guide for your operating system and interface.

For Windows® 95/98/98SE/Me/2000 Users

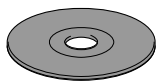
MAKE SURE THAT YOU FOLLOWED THE SET-UP INSTRUCTIONS ON PAGE 1 TO 3 BEFORE CONTINUING

Step 1. Unplug the MFC from the AC socket and disconnect your MFC from your computer if you have already connected an interface cable.

Step 2. Turn on your computer.

For Windows® 2000 Professional, you must be logged on as the Administrator.

Step 3. Insert the CD-ROM into the CD-ROM drive.



1. Insert the MFC Software Suite CD-ROM into your CD-ROM drive.
2. Click your language. The CD-ROM main menu will appear.
(If any window does not appear after you insert the CD-ROM into the CD-ROM drive, use Windows® Explorer to run the setup.exe program from the root directory of the Brother CD-ROM.)



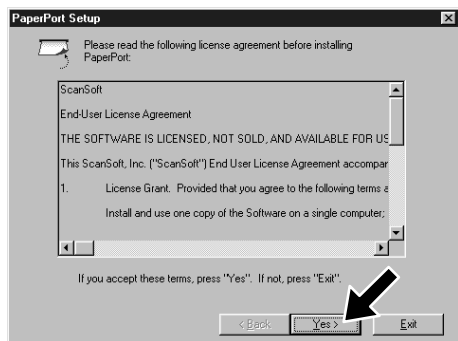
3. Click **Install Software**.



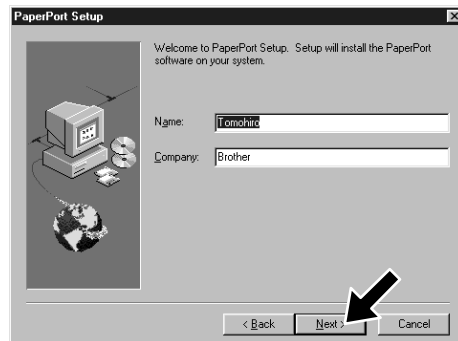
4. Click **MFC Software Suite in Main Application**. Please see Note*1.



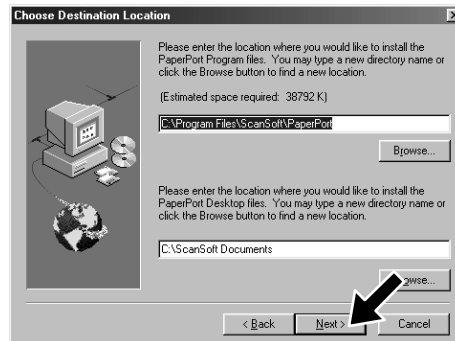
5. Click **Install**.



6. The InstallShield Wizard Setup window will appear briefly, followed by the PaperPort® Setup window. Click **Yes**.



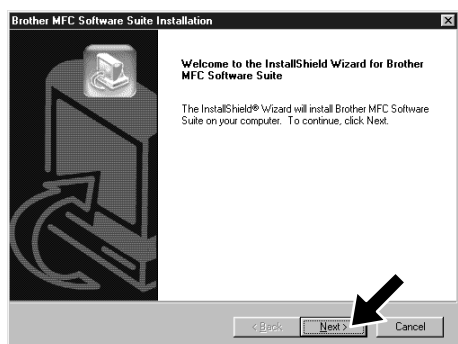
7. When the PaperPort® Setup window displays your Name and Company, either change or accept them, and then click **Next**.



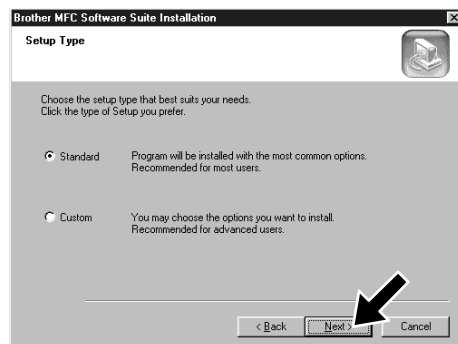
8. When the Choose Destination Location window displays the path where the PaperPort® files will be installed, either change or accept, and then click **Next**.



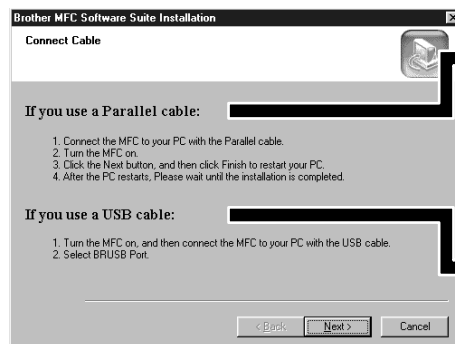
9. When the Register Today screen appears, click **Next**. This is registration for PaperPort®. Follow the instructions.



10. When the MFC Software Suite Installation window appears, click **Next** to begin installing the MFC Software Suite. Please see Note*2.

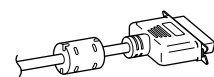


11. When the Setup Type window appears, select **Standard**, and then click **Next**. The application files will be copied to your computer.

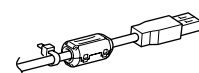


12. The Connect Cable window will appear.

For Parallel



For USB



Please see **NEXT PAGE**

*1 MFC Software Suite includes Printer Driver, Scanner Driver, ScanSoft™ PaperPort®, ScanSoft™ Text Bridge®, PC-FAX software, Remote Setup and True Type fonts. PaperPort® is a document management application for viewing scanned documents. ScanSoft™ TextBridge®, which is integrated into PaperPort®, is an OCR application that converts an image into text and inserts it into your default word processor package.

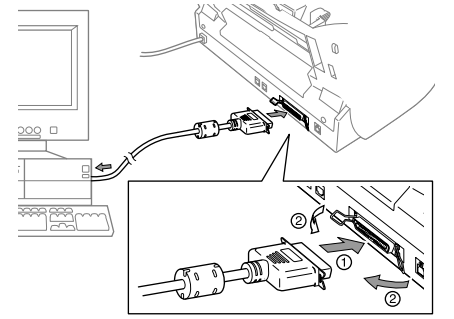
*2 If an error message appears during the installation process, or you have previously installed MFC Software Suite or MFL Pro, you will first have to uninstall it. From the **Start** menu, select **Programs, Brother, Brother MFL Pro, Uninstall**, and then follow the instructions on the screen.

*3 Even if you select **NO**, later you will be able to launch the Brother Control Centre to use the **Scan to key**. See *AutoLoad the Brother Control Centre*, Chapter 13 in the Owner's Manual on the CD-ROM.



Step 4. Connect the MFC to your PC with Parallel Cable.

- A. Connect the parallel interface cable to the parallel interface port of the MFC and secure the wire clips.
- B. Connect the interface cable to the printer port of the computer and secure it with the two screws. For the location of your computer's parallel printer port, see the User's Guide for your computer.



Step 5. Turn on the MFC by plugging in the power cord.

Step 6. The installation of the Brother driver will automatically start. Follow the instructions on the screen.

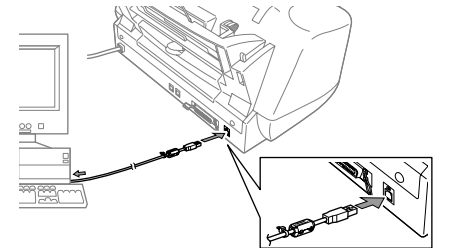
(For Windows® 95/98/98SE/Me Users)		(For Windows® 2000 Professional User)	
<p>1. In the Connect Cable window, click Next.</p>	<p>2. When the above screen appears, click Finish and wait as the PC restarts Windows® and continues the installation.</p>	<p>1. In the Connect Cable window, click Next.</p>	<p>2. When the above screen appears, click Finish and wait as the PC restarts Windows® and continues the installation.</p>
<p>3. Click Yes to have the Control Centre loaded each time Windows® is started. The Control Centre will appear as an icon in the task tray. If you click No the Scan to key on the MFC will be disabled. Please see Note*3.</p>	<p>The Brother PC fax, Printer and Scanner drivers have been installed and the installation is now complete.</p>	<p>3. When the Digital Signature Not Found dialog boxes appear, click Yes to install the driver.</p>	<p>4. Click Yes to have the Control Centre loaded each time Windows® is started. The Control Centre will appear as an icon in the task tray. If you click No the Scan to key on the MFC will be disabled. Please see Note*3.</p>
<p>The Brother PC fax, Printer and Scanner drivers have been installed and the installation is now complete.</p>		<p>The Brother PC fax, Printer and Scanner drivers have been installed and the installation is now complete.</p>	



Step 4. Turn on the MFC by plugging in the power cord.

Step 5. Connect the Filter Core and Cable Tie to the USB cable, and then connect the MFC to your PC with the USB cable. (It will take a few seconds for the installation screen to appear.)

Step 6. The installation of the Brother driver will automatically start. Follow the instructions on the screen.



(For Windows® 98/98SE/Me Users)			(For Windows® 2000 Users)	
<p>1. In the Add Printer Wizard window, select BRUSB: USB Printer Port, and then click Next.</p>	<p>2. Accept the default Printer name by selecting Yes, and then click Next.</p>	<p>3. Select Yes (recommended), and then click Finish. A test page will be printed so you can check the print quality.</p>	<p>1. When the Digital Signature Not Found dialog boxes appear, click Yes to install the driver.</p>	
<p>4. If the test page is printed correctly, click Yes. If you click No, follow the prompts on the screen to correct the problem.</p>	<p>5. Select Yes to restart your computer, and then click Finish.</p>	<p>6. Click Yes to have the Control Centre loaded each time Windows® is started. The Control Centre will appear as an icon in the task tray. If you click No the Scan to key on the MFC will be disabled. Please see Note*3.</p>	<p>2. Select Finish to restart your computer.</p>	
<p>The Brother PC fax, Printer and Scanner drivers have been installed and the installation is now complete.</p>			<p>The Brother PC fax, Printer and Scanner drivers have been installed and the installation is now complete.</p>	

For Windows NT® Workstation Version 4.0 Users

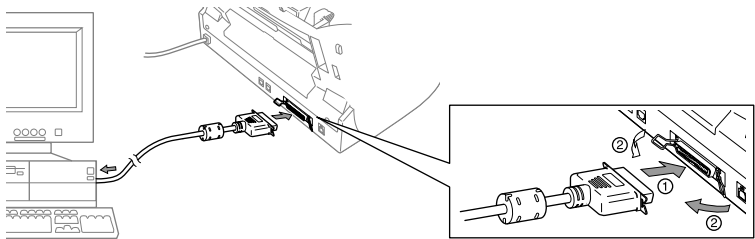
MAKE SURE THAT YOU FOLLOWED THE SET-UP INSTRUCTIONS ON PAGE 1 TO 3 BEFORE CONTINUING

Step 1. Check that your computer is turned on.

You must be logged on as the Administrator.

Step 2. Connect the MFC to your PC with the Parallel Cable.

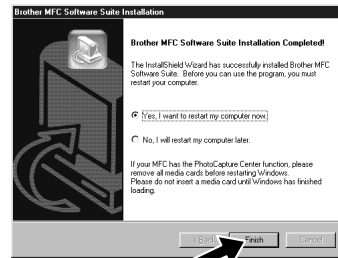
- Connect the parallel interface cable to the parallel interface port of the MFC and secure the wire clips.
- Connect the interface cable to the printer port of the computer and secure it with the two screws. For the location of your computer's parallel printer port, see the User's Guide for your computer.



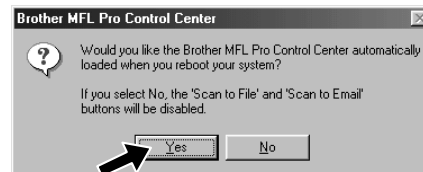
Step 3. Turn on the MFC by plugging in the power cord.

Step 4. Follow the instructions on the screen.

(Same step as Windows® 95/98/98SE/Me/2000 Users **Step 3.**, 1 to 11)



- Select **Yes** to restart your computer, and then click **Finish**.



- Click **Yes** to have the Control Centre loaded each time Windows is started. The Control Centre will appear as an icon in the task bar. If you click **No**, the **Scan to** key on the MFC will be disabled. Please see Note*3.

The Brother PC fax, Printer and Scanner drivers have been installed and the installation is now complete.

For Apple® Macintosh® QuickDraw® Driver for OS 8.6/9.0/9.0.4/9.1 Users

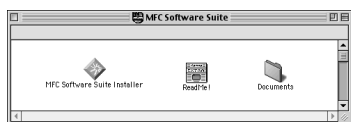
MAKE SURE THAT YOU FOLLOWED THE SET-UP INSTRUCTIONS ON PAGE 1 TO 3 BEFORE CONTINUING

Step 1. Make sure your MFC power cord is unplugged and your Macintosh is turned on.

- Make sure you do NOT connect your MFC to your Macintosh

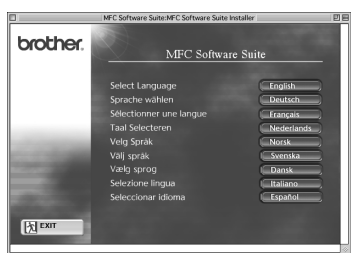
Step 2. Insert the CD-ROM into your CD-ROM drive.

Installing MFC Software Suite



- When the window appears, double-click **MFC Software Suite Installer**.

Select your language

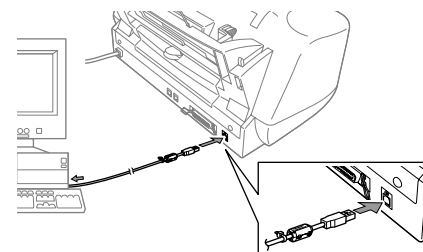


- Click your language to install the printer and scanner drivers. After the installation is completed, the screen prompts you to restart your Macintosh.

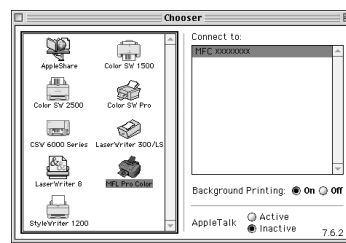
Step 3. Restart your Macintosh so it can recognize the new driver.

Step 4. Connect the Filter Core and Cable Tie to the USB cable.

Step 5. Connect the MFC to your Macintosh with the USB cable, and then turn on the MFC by plugging in the power cord.



Step 6. Select the Printer.



- From the Apple menu, open the **Chooser**.
- Click to **MFL Pro Colour** icon you installed. On the right side of the **Chooser**, select the printer to which you want to print. Close the **Chooser**.

The Brother PC fax, Printer and Scanner drivers have been installed and the installation is now complete.

What is included on the CD-ROM

Windows®

You can get a variety of information from this CD-ROM



(For Windows®)

Install Software

You can install printer and scanner drivers and the various utility items.

Manuals

View the Owner's Manual and other documentation.

Brother Solutions Centre

Connect to the Brother Solutions Centre, the Service and Support Web Site for your Brother Product.

Further information

Interactive Demonstration showing features of the Printer Driver.

Macintosh®

You can get a variety of information from this CD-ROM



(For Macintosh®)

MFC Software Suite Installer

You can install the printer and scanner drivers and the various utility items.

ReadMe!

You can get important information and troubleshooting tips.

Documents

View the Owner's Manual and other documentation.