

## THANK YOU!

... FOR PURCHASING YOUR BROTHER MACHINE. WE ARE SURE YOU WILL BE IMPRESSED WITH THE CONVENIENT WAY THAT YOUR NEW MACHINE PERFORMS SO MANY TASKS WITH GREAT RESULTS!

Follow these simple instructions in numerical order.

For greater detail, consult your Owner's Manual and CD-ROM.

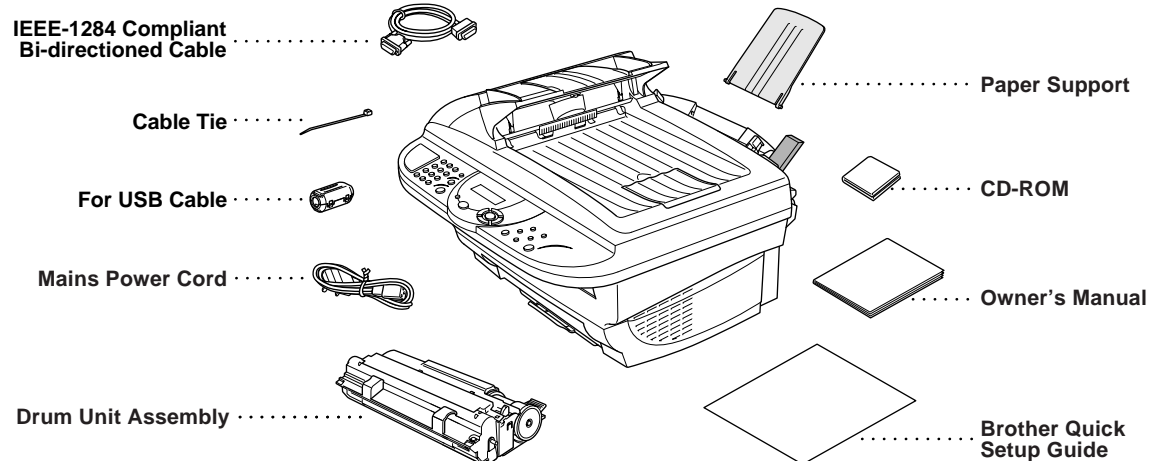
Alternatively, if you cannot solve a problem:

Refer to **Frequently Asked Questions (FAQ's)** on Brother Solutions Web Site:

URL: <http://solutions.brother.com>

Call Brother Customer Service at: 0161 931 2354

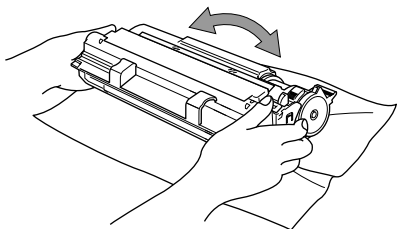
## 1 Packing List



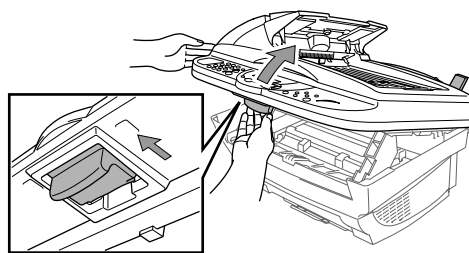
⚠ Keep the packing materials for possible future transport. If you do not pack the machine properly, it may void your warranty.

## 2 Install the Drum Unit

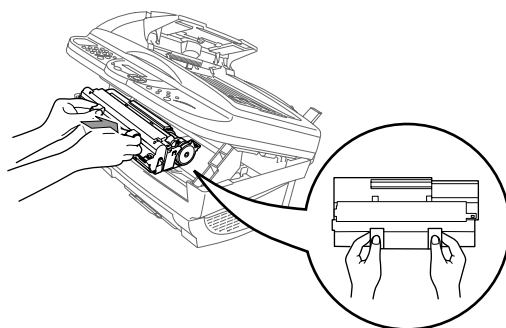
**A.** Unpack the drum unit assembly, and gently rock it from side to side five or six times to distribute the toner evenly inside the cartridge.



**B.** Open the top cover of the machine by pulling the lever toward you and lifting the cover.



**C.** Holding the drum unit by its handles, insert it into the machine.

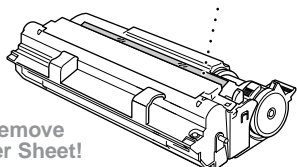


**D.** Close the top cover.

⚠ To prevent damage to the drum, do not expose it to light for longer than a few minutes.

⚠ Do NOT remove the clear plastic starter sheet this will be ejected while the machine is warming up.

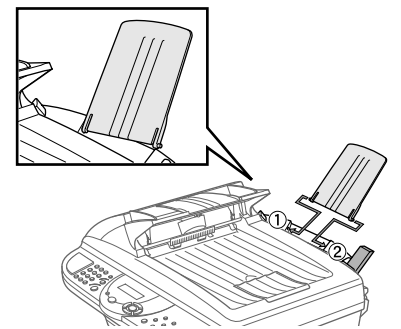
Starter Sheet



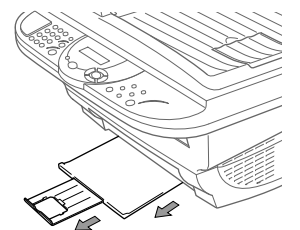
Do NOT remove the Starter Sheet!

## 3 Attach the Plastic Support and Pull out the Paper Tray

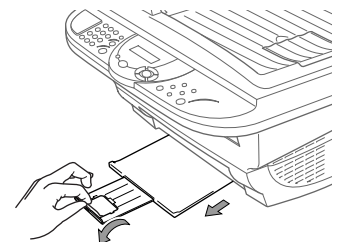
**A.** Attach the paper support to the multi-purpose sheet feeder.



**B.** Pull out the paper tray and the extension.



**C.** If your paper size is A4 or Letter, extend the paper stopper by pulling it toward you.

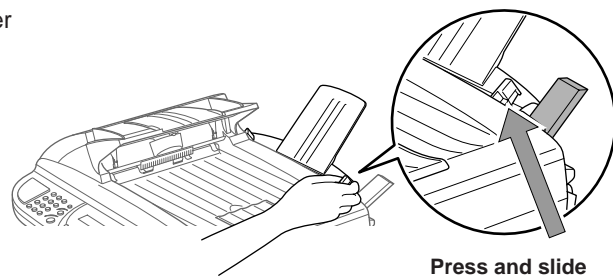


(For A4 and Letter paper)

## 4 Load Paper

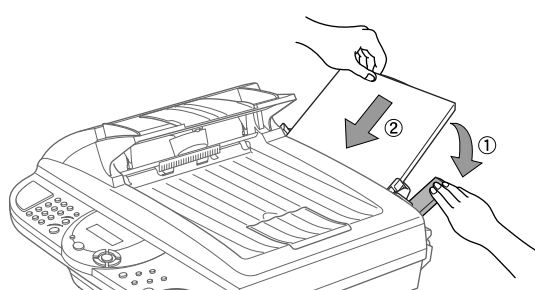
**A.** Adjust the guides to the position for the paper size you are using.

**B.** Fan the paper well.



Press and slide

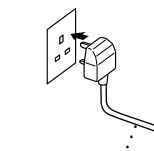
**C.** Push down the paper lever. Load the paper (with the lever down). Make sure the print side is toward the fax machine and the paper level is stacked below the paper mark. The feeder can hold up to 200 sheets of paper, or up to 10 envelopes.



Load the paper with the lever down

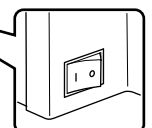
## 5 Install Mains Power Cord

(Example for the U.K.)



Mains Power Cord

Turn the power switch ON.



⚠ Complete reading this guide before connecting the Parallel or USB cables.

# Setting Up the MFC and PC to Work Together

## Before You begin

- You must set up the hardware and install the Brother Drivers before you can use your MFC as a printer and scanner in any Windows® application.
- Please purchase the appropriate cable if you intend to use USB.

**!** Use only a shielded parallel interface cable that is IEEE 1284-compliant and/or a USB cable that is no longer than 6 feet long (1.8 meters).

Follow the instructions in this guide for your operating system and interface.

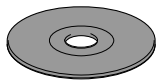
## For Windows® 95/98/98SE/Me/2000 Users

**Step 1.** Turn the MFC power switch OFF and disconnect your MFC from your computer if you already connected an interface cable.

**Step 2.** Turn on your computer.

For Windows® 2000 Professional, you must be logged on as the Administrator.

**Step 3.** Insert the CD-ROM into the CD-ROM drive.



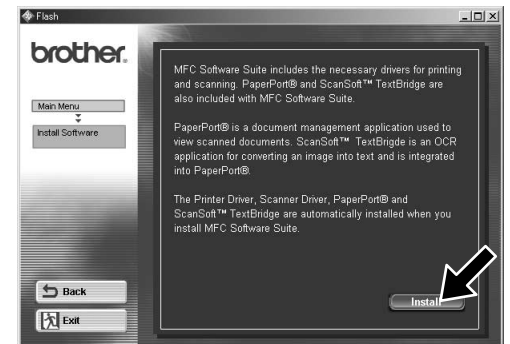
1. Insert the MFC Software Suite CD-ROM into your CD-ROM drive. If the model name screen appears, click on your model name.



3. Click **Install Software**.

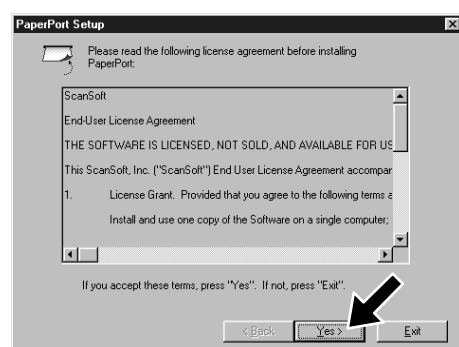


4. Click **MFC Software Suite** in **Main Application**. Please see Note\*1.

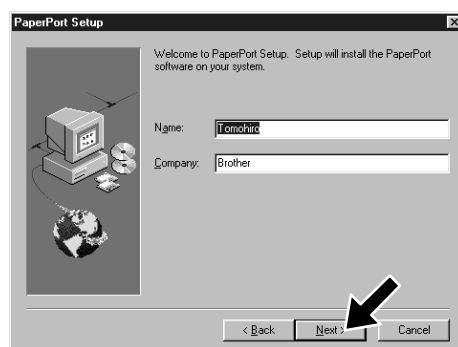


5. Click **Install**.

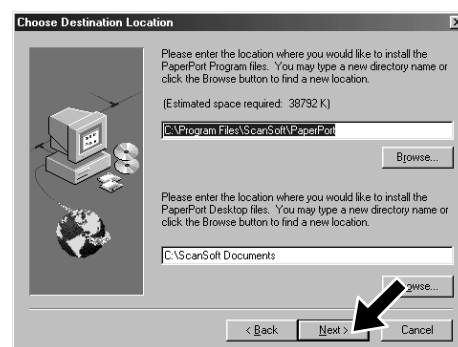
2. Click your language. The CD-ROM main menu will appear.



6. The InstallShield Wizard Setup window will appear briefly, followed by the PaperPort® Setup window. Click **Yes**.



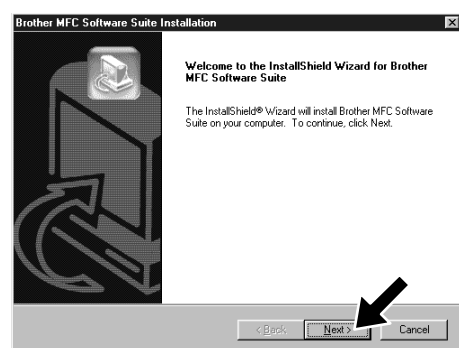
7. When the PaperPort® Setup window displays your Name and Company, either change or accept them, and then click **Next**.



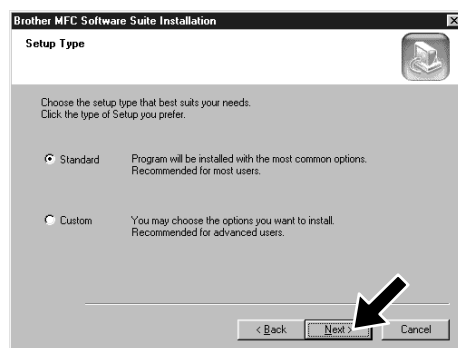
8. When the Choose Destination Location window displays the path where the PaperPort® files will be installed, either change or accept, and then click **Next**.



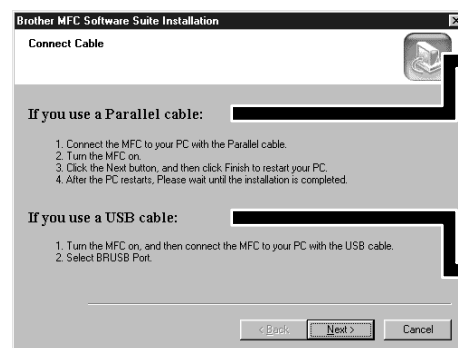
9. When the Register Today screen appears, click **Next**. This is registration for Paper Port®. Follow the instructions.



10. When the MFC Software Suite Installation window appears, click **Next** to begin installing the MFC Software Suite. Please see Note\*2.

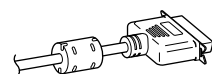


11. When the Setup Type window appears, select **Standard**, and then click **Next**. The application files will be copied to your computer.

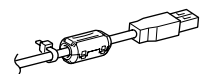


12. The Connect Cable window will appear.

For Parallel



For USB



Please see **NEXT PAGE**

\*1 MFC Software Suite includes Printer Driver, Scanner Driver, ScanSoft™ PaperPort®, ScanSoft™ Text Bridge® software, Remote Setup and True Type fonts. PaperPort® is a document management application for viewing scanned documents. ScanSoft™ TextBridge®, which is integrated into PaperPort®, is an OCR application that converts an image into text and inserts it into your default word processor package.

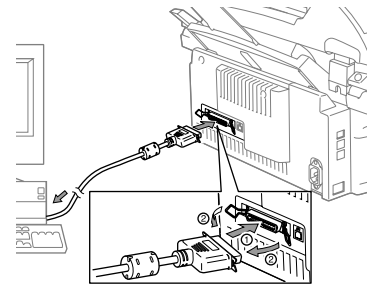
\*2 If an error message appears during the installation process, or you have previously installed MFC Software Suite or MFL Pro, you will first have to uninstall it. From the **Start** menu, select **Programs, Brother, Brother MFL Pro, Uninstall**, and then follow the instructions on the screen.

\*3 Even if you select **NO**, later you will be able to launch the Brother Control Centre to use the Scan key. See *AutoLoad the Brother Control Centre*, Chapter 5 in the Owner's Manual on the CD-ROM.



### Step 4. Connect the MFC to your PC with Parallel Cable.

- A. Connect the parallel interface cable to the parallel interface port of the MFC and secure the wire clips.
- B. Connect the interface cable to the printer port of the computer and secure it with the two screws. For the location of your computer's parallel printer port, see the User's Guide for your computer.



### Step 5. Turn the MFC power switch ON.

### Step 6. The installation of the Brother driver will automatically start. Follow the instructions on the screen.

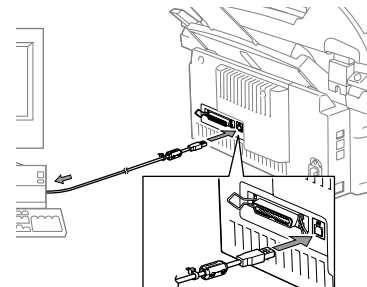
( For Windows® 95/98/98SE/Me Users )		( For Windows® 2000 Professional User )	
<p><b>1.</b> In the Connect Cable window, click <b>Next</b>.</p>	<p><b>2.</b> When the above screen appears, click <b>Finish</b> and wait as the PC restarts Windows® and continues the installation.</p>	<p><b>1.</b> In the Connect Cable window, click <b>Next</b>.</p>	<p><b>2.</b> When the above screen appears, Click <b>Finish</b> and wait as the PC restarts Windows® and continues the installation.</p>
<p><b>3.</b> Click <b>Yes</b> to have the Control Centre loaded each time Windows® is started. The Control Centre will appear as an icon in the task tray. If you click <b>No</b> the Scan keys on the MFC will be disabled. Please see Note*3.</p>	<p>Printer and Scanner drivers have been installed and the installation is now complete.</p>	<p><b>3.</b> When the <b>Digital Signature Not Found</b> dialog boxes appear, click <b>Yes</b> to install the driver.</p>	<p><b>4.</b> Click <b>Yes</b> to have the Control Centre loaded each time Windows® is started. The Control Centre will appear as an icon in the task tray. If you click <b>No</b> the Scan keys on the MFC will be disabled. Please see Note*3.</p>
<p>Printer and Scanner drivers have been installed and the installation is now complete.</p>		<p>Printer and Scanner drivers have been installed and the installation is now complete.</p>	



### Step 4. Turn the MFC power switch ON.

### Step 5. Connect the Filter Core and Cable Tie to the USB cable, and then connect the MFC to your PC with the USB cable. (It will take a few seconds for the installation screen to appear.)

### Step 6. The installation of the Brother driver will automatically start. Follow the instructions on the screen.



( For Windows® 98/98SE/Me Users )			( For Windows® 2000 Users )	
<p><b>1.</b> In the Add Printer Wizard window, select <b>BRUSB: USB Printer Port</b>, and then click <b>Next</b>.</p>	<p><b>2.</b> Accept the default Printer name by selecting <b>Yes</b>, and then click <b>Next</b>.</p>	<p><b>3.</b> Select <b>Yes (recommended)</b>, and then click <b>Finish</b>. A test page will be printed so you can check the print quality.</p>	<p><b>1.</b> When the <b>Digital Signature Not Found</b> dialog boxes appear, click <b>Yes</b> to install the driver.</p>	<p><b>2.</b> Select <b>Finish</b> to restart your computer.</p>
<p><b>4.</b> If the test page is printed correctly, click <b>Yes</b>. If you click <b>No</b>, follow the prompts on the screen to correct the problem.</p>	<p><b>5.</b> Select <b>Yes</b> to restart your computer, and then click <b>Finish</b>.</p>	<p><b>6.</b> Click <b>Yes</b> to have the Control Centre loaded each time Windows® is started. The Control Centre will appear as an icon in the task tray. If you click <b>No</b> the Scan keys on the MFC will be disabled. Please see Note*3.</p>	<p><b>3.</b> Click <b>Yes</b> to have the Control Centre loaded each time Windows® is started. The Control Centre will appear as an icon in the task tray. If you click <b>No</b> the Scan keys on the MFC will be disabled. Please see Note*3.</p>	<p>Printer and Scanner drivers have been installed and the installation is now complete.</p>
<p>Printer and Scanner drivers have been installed and the installation is now complete.</p>			<p>Printer and Scanner drivers have been installed and the installation is now complete.</p>	



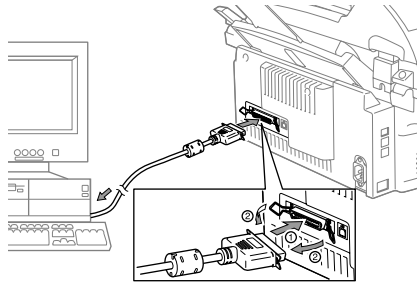
# For Windows NT® Workstation Version 4.0 Users

## Step 1. Check that your computer is turned on.

You must be logged on as the Administrator.

## Step 2. Connect the MFC to your PC with the Parallel Cable.

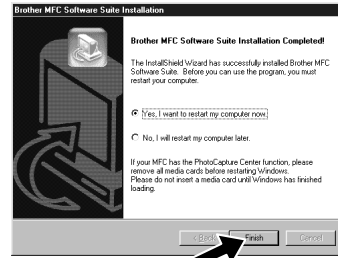
- Connect the parallel interface cable to the parallel interface port of the MFC and secure the wire clips.
- Connect the interface cable to the printer port of the computer and secure it with the two screws. For the location of your computer's parallel printer port, see the User's Guide for your computer.



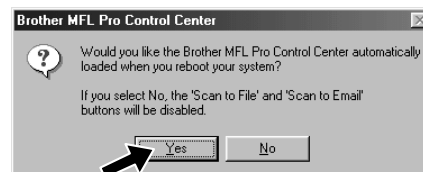
## Step 3. Turn the MFC power switch ON.

## Step 4. Follow the instructions on the screen.

(Same step as Windows 95/98/98SE/Me/2000 Users **Step 3.**, 1-11)



- Select **Yes** to restart your computer, and then click **Finish**.



- Click **Yes** to have the Control Centre loaded each time Windows is started. The Control Centre will appear as an icon in the task bar. If you click **No**, the Scan keys on the MFC will be disabled. Please see Note\*3.

Printer and Scanner drivers have been installed and the installation is now complete.

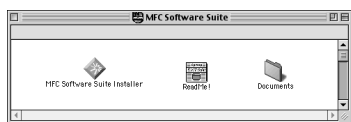
# For Apple® Macintosh® QuickDraw® Driver for OS 8.6/9.0/9.0.4/9.1 Users

## Step 1. Make sure your MFC power switch is turned OFF and your Macintosh is turned ON.

- ❗ Make sure you do NOT connect your MFC to your Macintosh.

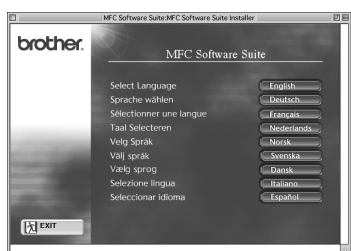
## Step 2. Insert the CD-ROM into your CD-ROM drive.

Installing MFC Software Suite



- When the window appears, double-click **MFC Software Suite Installer**.

Select your language

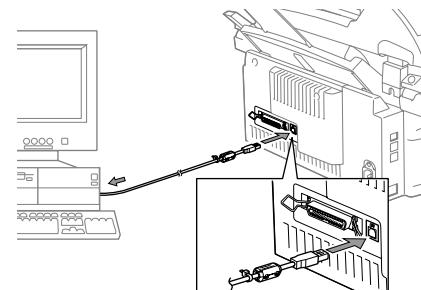


- Click your language to install the printer and scanner drivers. After the installation is completed, the screen prompts you to restart your Macintosh.

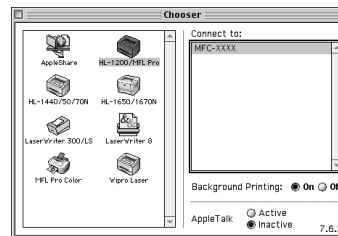
## Step 3. Restart your Macintosh so it can recognize the new driver.

## Step 4. Connect the Filter Core and Cable Tie to the USB cable.

## Step 5. Connect the MFC to your Macintosh with the USB cable, and then turn the MFC power switch ON.



## Step 6. Select the Printer.



- From the Apple menu, open the **Chooser**.
- Click to highlight the printer driver icon you installed. On the right side of the **Chooser**, select the printer to which you want to print. Close the **Chooser**.

Printer and Scanner drivers have been installed and the installation is now complete.

## What is included on the CD-ROM

### Windows®

You can get a variety of information from this CD-ROM



(For Windows®)

#### Install Software

You can install printer and scanner drivers and the various utility items.

#### Manuals

View the Owner's Manual and other documentation.

#### Brother Solutions Centre

Connect to the Brother Solutions Centre, the Service and Support Web Site for your Brother Product.

#### Further information

Interactive Demonstration showing features of the Printer Driver.

### Macintosh®

You can get a variety of information from this CD-ROM



(For Macintosh®)

#### MFC Software Suite Installer

You can install the printer and scanner drivers and the various utility items.

#### ReadMe!

You can get important information and troubleshooting tips.

#### Documents

View the Owner's Manual and other documentation.