

# For Windows® XP Users

At your side.  
brother®

## Setting Up the machine and PC to Work Together

### Before You begin

- When necessary, please purchase the appropriate interface cable you intend to use with this machine (parallel or USB).
- Some illustrations are based on the MFC-9070.

**!** Use only a shielded parallel interface cable that is IEEE 1284-compliant and/or a USB cable that is no longer than 6 feet long (1.8 meters).

You must set up the hardware and install the driver before you can use your machine as a printer and scanner with your application. Brother offers both a Windows® Logo Tested (WHQL) driver and a Brother Native Driver on the CD-ROM. The Windows® Logo Tested Driver is automatically installed when you follow the installation steps below. The Brother Native driver offers some features that are not available with the Windows® Logo Tested Driver. The features available on the Brother Native driver can vary by model. Please visit us at <http://solutions.brother.com> for details on these features. You must follow steps 1 to 7 before you can proceed to the installation procedure for the Brother Native Driver.

## Installation of Brother Drivers for Windows® XP

**Step 1.** Shut down and turn OFF your computer.

**Step 2.** Unplug the MFC from the AC outlet and disconnect the interface cable if you have already connected it.

**Step 3.** Turn on your computer.

**Note:** If the “Found New Hardware Wizard” appears before the installation of the software, you should click on Cancel to exit the Wizard, and then start the installation program from the CD-ROM.

**Step 4.**  Insert the CD-ROM labelled “For Windows® XP” into the CD-ROM drive.

1. Click your language. The CD-ROM main menu will appear.  
If the model name screen appears, click on your model name.  
The CD-ROM main menu will appear.  
If the CD-ROM does NOT start automatically, start the installer application by clicking Start, Run, then type x:\ setup.exe (where x:\ is the drive letter of your CD-ROM drive).



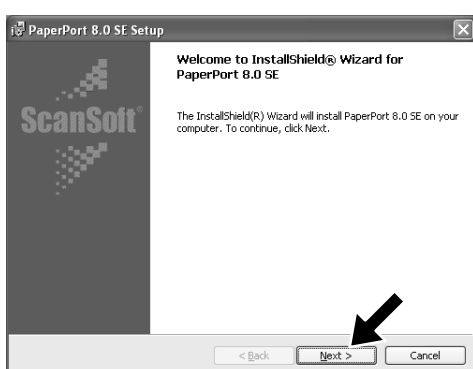
2. Click Install Software.



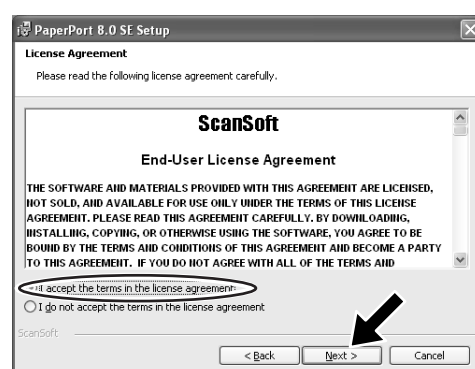
3. Click MFC Software Suite in Main Application, and then click Install. \*1



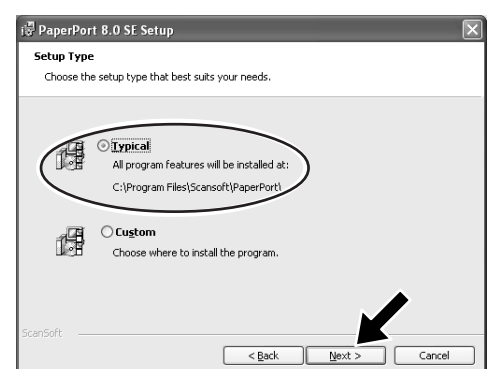
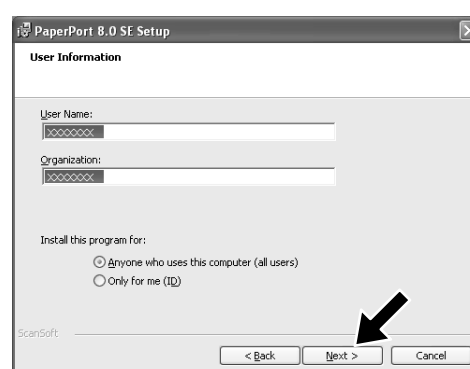
4. Click Install.



5. When the PaperPort® 8.0 SE Setup window is displayed, click Next.

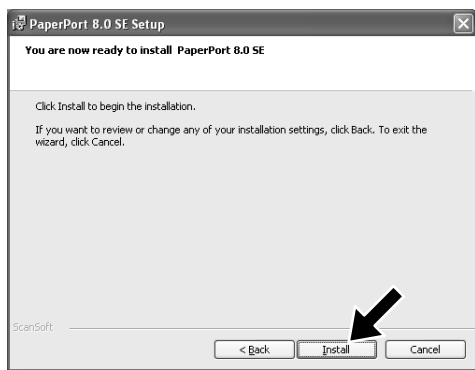


6. After reading and accepting the License Agreement, enter your user information and click Next.

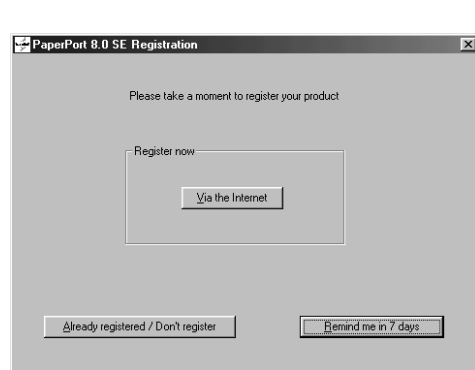


7. Select Typical and click Next.

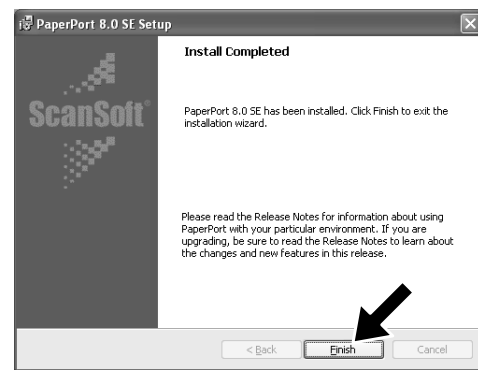
\*1 MFC Software Suite includes Printer Driver, Scanner Driver, PC-FAX software and Remote Setup.  
Windows® XP restricts scanning resolution to a max. of 600 dpi and Paper size to 8.5" (215.9 mm) x 11.7" (297 mm).



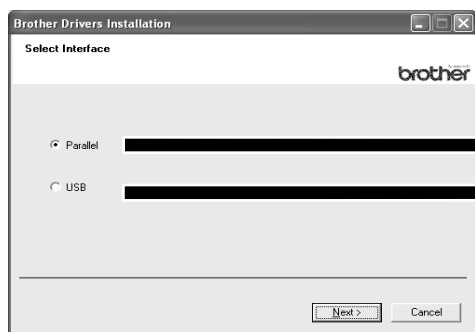
8. Click **Install** and PaperPort® will start installing on your computer.



9. When the Registration screen is displayed, make your selection and follow the on screen instructions.

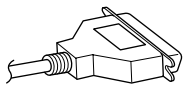


10. Click **Finish** to complete ScanSoft™ PaperPort® installation.

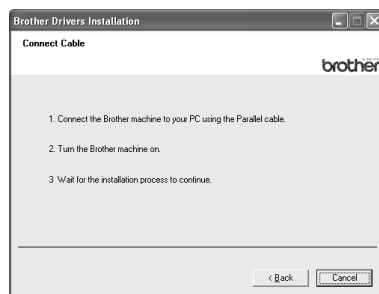
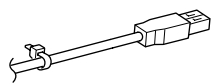


11. Select an interface cable, and then press **Next** to start Driver installation.

For Parallel

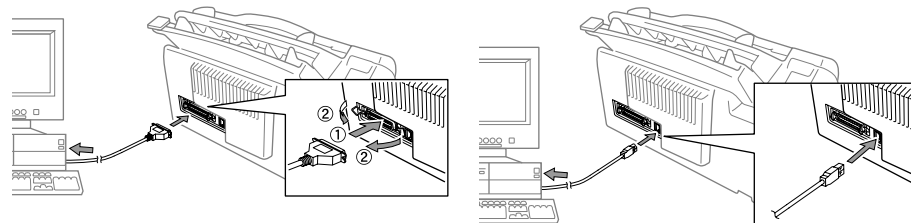


For USB



## Step 5.

**Connect the machine to your PC using the parallel or USB cable.**



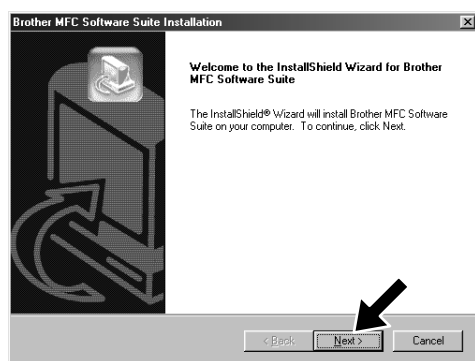
## Step 6.

**Turn on the machine by plugging in the power cord (and if necessary switch on the machine power switch). The installation of the Brother drivers will start automatically.**

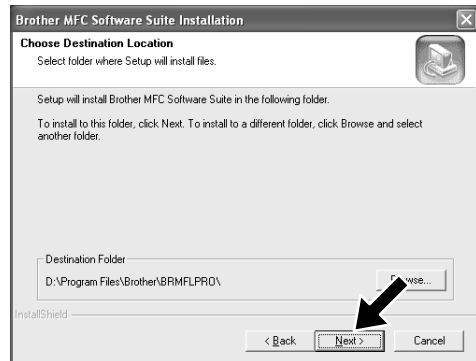
## Step 7.

**Follow the instructions on the screen.**

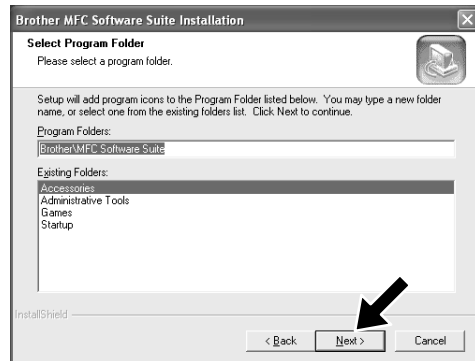
**Note:** If you are installing a DCP model, installation is complete.



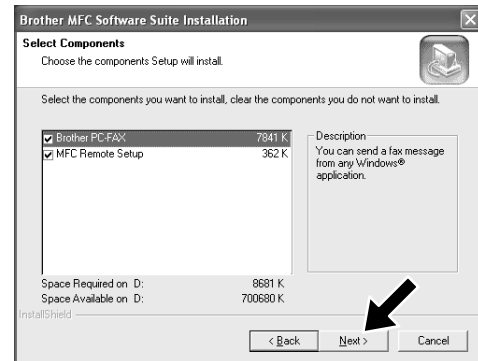
1. When the above screen appears, click **Next** to start the PC-FAX and Remote Setup Installation Program.



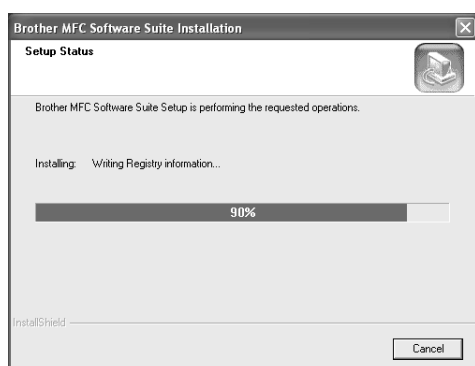
2. Select the folder where Setup will install the program files. If you do not wish to use the default directory, click the **Browse** button to select a new folder and then click **Next** to continue.



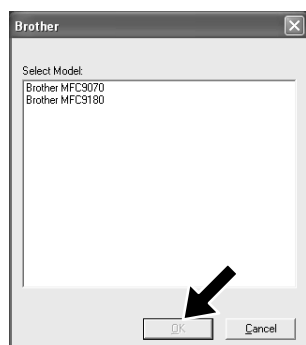
3. Select the program folder in which you wish to add the program icons, and then click **Next**.



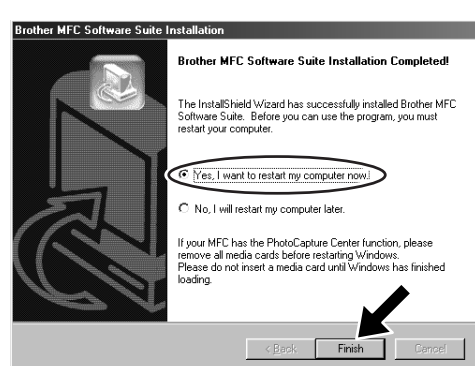
4. If this screen appears, select the components to install (the default gives you the most functionality), and then click **Next**.



5. The installation process will now start.



6. If this screen appears, select the model of the machine which you want to use to send PC-Faxes and then click **OK**.



7. Select "Yes" to restart your computer, and then click **Finish**.

# Installation of Brother Native Drivers for Windows® XP

## Before You begin

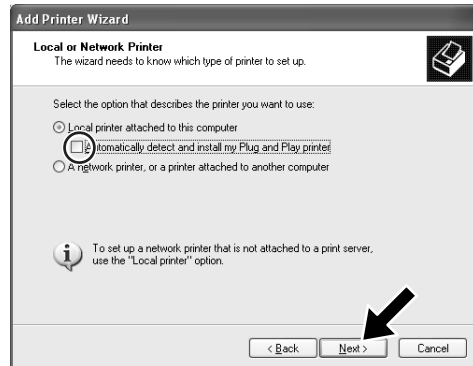
- Please complete steps 1 to 7 of the "Setting Up the machine and PC to Work Together" before you install the Brother Native Driver.
- Make sure that the interface cable is connected between the machine and your PC and they are both powered ON.

## Step 8. Click "Start" and select "Printers and Faxes"

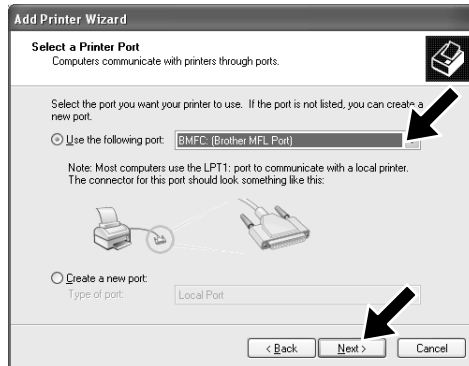
## Step 9. Click on "Add a printer" and the Add Printer Wizard will start.



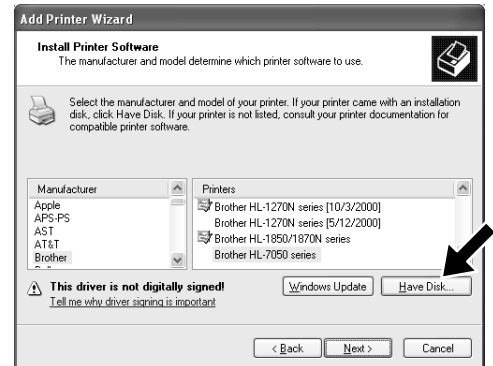
1. When the above screen appears, click **Next**.



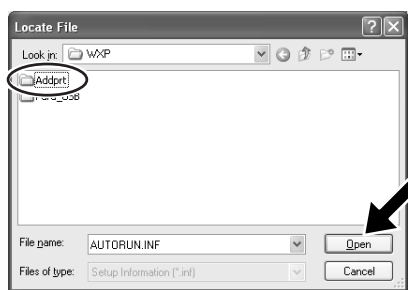
2. Un-check the "Automatically detect and install the Plug and Play printer" selection and then click **Next**.



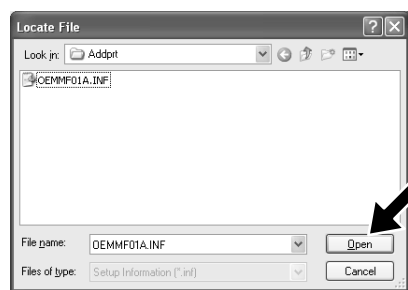
3. Select "BMFC (Brother MFL Port)" from the pull down window for the Printer Port Selection and then click **Next**.



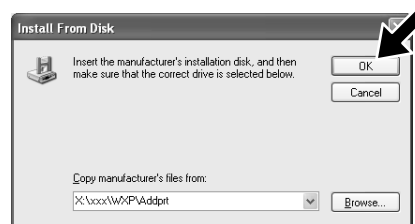
4. Click on **Have Disk**.



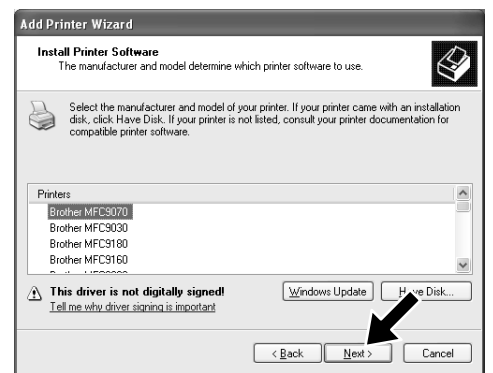
5. Browse the CD-ROM and highlight your language folder and click **Open**. Highlight the "WXP" folder and click **Open**. Highlight the "Addprt" folder and click **Open**.



6. Click **Open**.



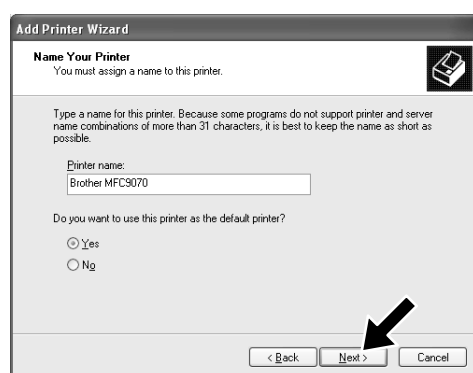
7. Make sure "X:\xxx\WXP\Addprt" is displayed in the window and click **OK** (X:\ is the drive letter of your CD-ROM).



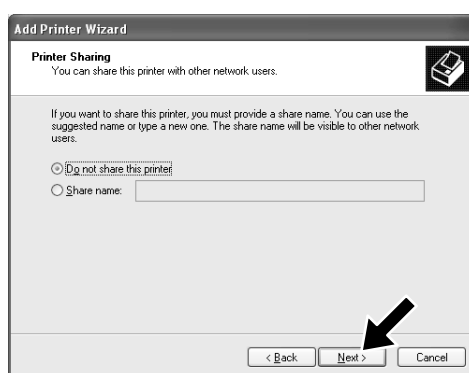
8. Highlight the model you are installing from the list of machines and click **Next**.



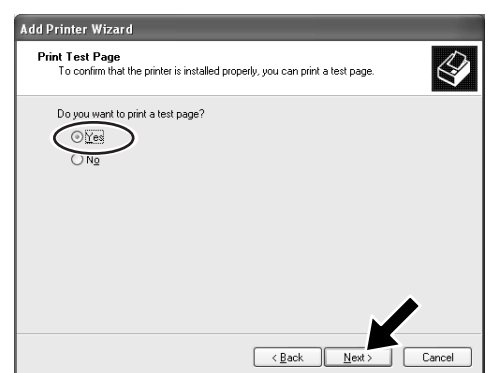
9. If the above screen appears select "Replace existing driver" and **Next**.



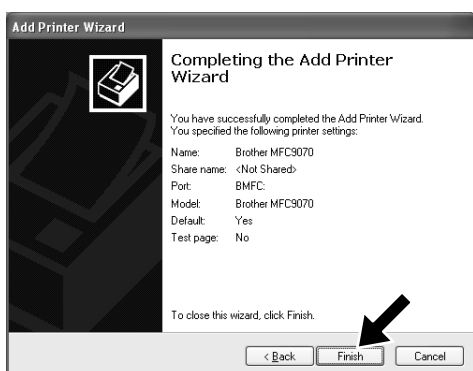
10. The model you are installing will be listed in the window. Select **Yes** or **No** if you want this driver to be your default printer.



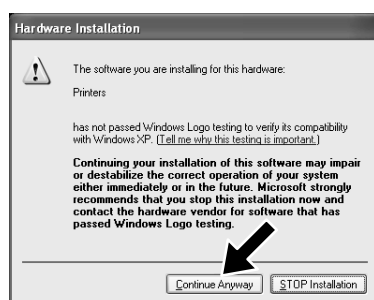
11. If the above screen appears select "Do not share this printer" and **Next**.



12. Select "Yes" and **Next** to print a test page.



13. When the above screen appears click **Finish**.



14. If the Windows Logo testing screen appears click **Continue Anyway**. This completes the installation of the Brother Native Driver.

**Note:** There will be two Brother printer drivers listed in the Printers and Faxes selection. The driver without hyphen in the model name (Ex. Brother MFC9070) is the Brother Native Driver.

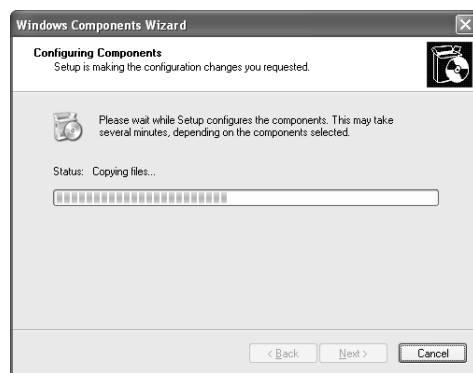
# Setting Up and Using PC-FAX Receiving (For the MFC-9660 and MFC-9880)

Before you can start receiving faxes, please install the appropriate Windows XP driver (Windows XP In-box driver or Brother Windows XP driver). After the driver is installed, refer to the following information to configure your Windows XP PC for Fax receiving.

## Step 10. Setting Up Your PC



1. To activate Faxing receiving, click **Set up faxing** in the **Printer Tasks** menu.



2. The FAX services will be installed on your PC.



3. A **Fax** icon will then appear in the **Printers and Faxes** folder. If **Fax** icon does not appear, click **Install a local fax printer** in the **Printer tasks** menu.

4. Select the **Start, All Programs, Accessories, Communications, Fax, Fax Console**.

**Note:** If you have not configured your fax connection, the screen for your local information will be displayed. Enter your details, ensuring you specify the outside line access number if necessary and click **OK**. Select the **My location** radio button if it is not selected and then click **OK**.



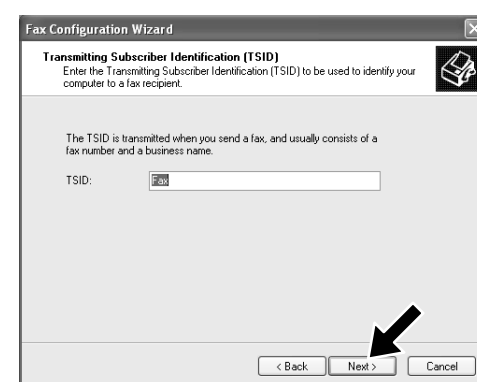
5. The **Fax Configuration Wizard** starts. Click **Next**.



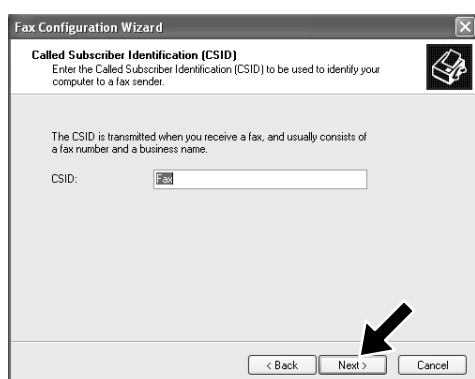
6. Enter the sender information, and then click **Next**.



7. Select **fax device** you use in the **Please select the fax device** pull-down list. Click to select the **Enable Receive** check box. Specify the number of rings before your MFC will attempt to answer the fax. Click **Next**.



8. Enter the **Transmitting Subscriber Identification (TSID)**, and then click **Next**.



9. Enter the **Called Subscriber Identification (CSID)**, and then click **Next**.



10. Select if you print a received fax or save it in a folder, and then click **Next**.



11. Click **Finish**.  
The PC-FAX installation is now complete.

**Note:** When PC-FAX Receiving is active, you cannot run the Remote Setup utility. To use Remote Setup, check off **Enable Receive** in item 7 of Step 10.

For information on how to use PC-FAX Sending and Receiving, please refer to Help in the Fax Console.

# WIA compliant Scanning

Windows® XP uses Windows Image Acquisition (WIA) for scanning images from the MFC. You can scan images directly into the PaperPort® viewer that Brother included with your MFC or you can scan images directly into any other software application that supports WIA or TWAIN scanning.

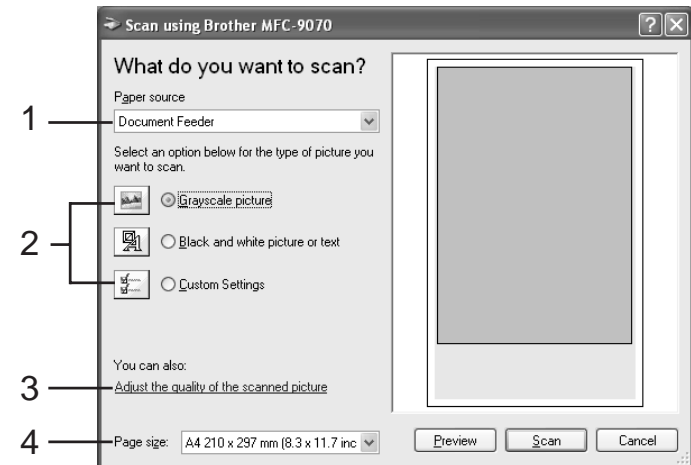
## For the MFC-580, MFC-590, MFC-9160, MFC-9180, MFC-9760 and MFC-9880

The following Scan dialog box will appear:



## For the MFC-9070 and MFC-9660

The following Scan dialog box will appear:



### 1. Paper source:

You can select scanning from the Flatbed or Document Feeder.

### 2. Type of picture

Select the type of picture you are scanning.

### 3. Quality of the scanned picture

You can adjust Brightness, Contrast, Resolution and Picture type.

### 4. Page size:

If the paper source is set to Document Feeder you can select the Page size that will be scanned.

## What is included on the CD-ROM

You can get a variety of information from this CD-ROM



### Install Software

You can install printer and scanner drivers and the various utility items.

### Manuals

View the Owner's Manual and other documentation.

### Brother Solutions Centre

Get all contact you need if you have to get in touch with our solutions centre.

### Further information

Interactive Demonstration showing features of the Printer Driver.

### Trademarks

The Brother logo and MFC Software Suite are registered trademarks of Brother Industries, Ltd.

© Copyright 2002 Brother Industries, Ltd. All rights reserved.

Windows and Microsoft are registered trademarks of Microsoft in the U.S. and other countries.