

# Quick Setup Guide for “Scan and Translate” using SYSTRAN WebTranslator 5.0

## Overview

By integrating the Brother ControlCenter2 and Scan to OCR functionality with SYSTRAN WebTranslator 5.0 you can scan a document into Microsoft Internet Explorer™ 6.0 or greater. The text from this document can then be translated using SYSTRAN WebTranslator 5.0.

The quality of the document translation depends on a number of factors such as the original document quality and layout. If the quality of the resulting translation is not as expected please consider a more professional translation solution from <http://www.systransoft.com/Brother>

## SYSTRAN WebTranslator 5.0 Available Language Translations:

English into / from Spanish, French, German, Italian, Portuguese, Swedish, Dutch, Russian  
French into / from Spanish, German, Italian, Portuguese, Dutch

## Installation

- 1 Install the Brother software following the Brother Quick Setup Guide.
- 2 Install SYSTRAN WebTranslator 5.0 by inserting the SYSTRAN CD-ROM and following the screen prompts.
- 3 Launch Internet Explorer. Go to **View, Toolbars** and check **SYSTRAN Web Translator 5.0**.

The SYSTRAN WebTranslator 5.0 toolbar appears in Internet Explorer.




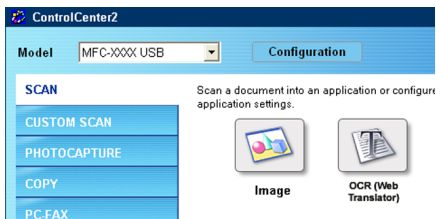
You may need to adjust its location. To adjust do the following:

- 1 Go to View, Toolbars and uncheck Lock toolbars
- 2 Click and drag the toolbar.

## Software Setup

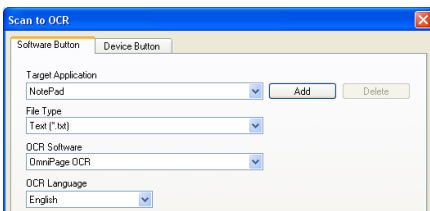
To scan a document to Internet Explorer using the Brother ControlCenter2 application do the following:

- 1 Start the Brother ControlCenter2 by double clicking the ControlCenter2  icon on the tasktray
- 2 On the Brother ControlCenter2, click the **SCAN** tab. Right-click the **OCR (Web Translator)** button and choose **Configuration**.



If the ControlCenter2 window is open during the installation of the Systran Web Translator software, you will need to update the ControlCenter2 application by exiting the application and restarting it or by restarting your computer.

- 3 On the **Software Button** tab, choose **Internet Explorer** as the target application and **HTML** as the file type. If you wish to OCR documents of a different language change the default OCR language also. To use the machine's "Scan to" functionality, set the **Device Button** tab to the same options.



## Using Scan to WebTranslator

Now you can use the Brother ControlCenter2's **OCR (Web Translator)** button or the machine's Scan to OCR functionality to scan a document into Internet Explorer. If you translate documents of different languages please ensure that you set the correct OCR language in Step 3 above. You can then use the SYSTRAN WebTranslator 5.0 toolbar in Internet Explorer to translate the document.

Simply specify the Source language and the target language and then click the Translate button to translate the document.



## Activation and Registration

When you run a translation for the first time, you will be asked to activate the SYSTRAN product. You must activate to continue using the product. When this screen appeared, follow the instruction on the screen. The activation code is on the back of the CD-ROM cover.

## Technical Support

Brother offers Technical Support for this software and other Brother products. To learn more about Brother support, visit <http://solutions.brother.com>