



Multi-Protocol On-board Multi-function Print Server

NETWORK USER'S GUIDE

MFC-8460N
MFC-8860DN
DCP-8065DN

Please read this manual thoroughly before using this machine on your network. You can print or view this manual from the CD-ROM at any time, please keep the CD-ROM in a convenient place for quick and easy reference at all times.

The Brother Solutions Center (<http://solutions.brother.com>) is your one stop resource for all your printing needs. Download the latest drivers and utilities for your machine, read FAQs and troubleshooting tips or learn about special printing solutions.



Definitions of warnings, cautions, and notes

We use the following icon throughout this User's Guide:



Notes tell you how you should respond to a situation that may arise or give tips about how the operation works with other features.

Trademarks

Brother and the Brother logo are registered trademarks and BRAdmin Professional is a trademark of Brother Industries, Ltd.

UNIX is a registered trademark of The Open Group.

Apple, Macintosh, and LaserWriter are registered trademarks of Apple Computer, Inc.

HP, Hewlett-Packard, Jetdirect and PCL are registered trademarks of Hewlett-Packard Company.

Microsoft, Windows and Windows NT are registered trademarks of Microsoft Corporation.

OpenLDAP is a registered trademark of the OpenLDAP Foundation.

All other terms, brand and product names mentioned in this User's Guide are registered trademarks or trademarks of their respective companies.

OpenLDAP Statements

This product includes software developed by the OpenLDAP Project.

Unless otherwise expressly stated herein, The OpenLDAP Public License Version 2.8 shall be applied to individual files.

Copyright 1998-2005 The OpenLDAP Foundation All rights reserved.

Redistribution and use in source and binary forms, with or without modification, are permitted only as authorized by the OpenLDAP Public License.

A copy of this license is available in the file LICENSE in the top-level directory of the distribution or, alternatively, at <http://www.OpenLDAP.org/license.html>.

Portions Copyright 1999 Lars Uffmann.

Portions Copyright 1998 A. Hartgers.

All rights reserved.

Redistribution and use in source and binary forms, with or without modification, are permitted only as authorized by the OpenLDAP Public License.

Portions Copyright ©1990, 1993-1996 Regents of the University of Michigan. All rights reserved.

Redistribution and use in source and binary forms are permitted provided that this notice is preserved and that due credit is given to the University of Michigan at Ann Arbor. The name of the University may not be used to endorse or promote products derived from this software without specific prior written permission. This software is provided ``as is" without express or implied warranty.

Portions Copyright ©1999, 2000 Novell, Inc. All Rights Reserved.

THIS WORK IS SUBJECT TO U.S. AND INTERNATIONAL COPYRIGHT LAWS AND TREATIES. USE, MODIFICATION, AND REDISTRIBUTION OF THIS WORK IS SUBJECT TO VERSION 2.0.1 OF THE OPENLDAP PUBLIC LICENSE, A COPY OF WHICH IS AVAILABLE AT [HTTP://WWW.OPENLDAP.ORG/LICENSE.HTML](http://www.openldap.org/license.html) OR IN THE FILE "LICENSE" IN THE TOP-LEVEL DIRECTORY OF THE DISTRIBUTION. ANY USE OR EXPLOITATION OF THIS WORK OTHER THAN AS AUTHORIZED IN VERSION 2.0.1 OF THE OPENLDAP PUBLIC LICENSE, OR OTHER PRIOR WRITTEN CONSENT FROM NOVELL, COULD SUBJECT THE PERPETRATOR TO CRIMINAL AND CIVIL LIABILITY.

Portions Copyright ©The Internet Society (1997).

see RFC 2251 for full legal notices.

The OpenLDAP Public License Version 2.8, 17 August 2003

Redistribution and use of this software and associated documentation ("Software"), with or without modification, are permitted provided that the following conditions are met:

1. Redistributions in source form must retain copyright statements and notices,
2. Redistributions in binary form must reproduce applicable copyright statements and notices, this list of conditions, and the following disclaimer in the documentation and/or other materials provided with the distribution, and
3. Redistributions must contain a verbatim copy of this document.

The OpenLDAP Foundation may revise this license from time to time. Each revision is distinguished by a version number. You may use this Software under terms of this license revision or under the terms of any subsequent revision of the license.

THIS SOFTWARE IS PROVIDED BY THE OPENLDAP FOUNDATION AND ITS CONTRIBUTORS ``AS IS'' AND ANY EXPRESSED OR IMPLIED WARRANTIES, INCLUDING, BUT NOT LIMITED TO, THE IMPLIED WARRANTIES OF MERCHANTABILITY AND FITNESS FOR A PARTICULAR PURPOSE ARE DISCLAIMED. IN NO EVENT SHALL THE OPENLDAP FOUNDATION, ITS CONTRIBUTORS, OR THE AUTHOR(S) OR OWNER(S) OF THE SOFTWARE BE LIABLE FOR ANY DIRECT, INDIRECT, INCIDENTAL, SPECIAL, EXEMPLARY, OR CONSEQUENTIAL DAMAGES (INCLUDING, BUT NOT LIMITED TO, PROCUREMENT OF SUBSTITUTE GOODS OR SERVICES; LOSS OF USE, DATA, OR PROFITS; OR BUSINESS INTERRUPTION) HOWEVER CAUSED AND ON ANY THEORY OF LIABILITY, WHETHER IN CONTRACT, STRICT LIABILITY, OR TORT (INCLUDING NEGLIGENCE OR OTHERWISE) ARISING IN ANY WAY OUT OF THE USE OF THIS SOFTWARE, EVEN IF ADVISED OF THE POSSIBILITY OF SUCH DAMAGE.

The names of the authors and copyright holders must not be used in advertising or otherwise to promote the sale, use or other dealing in this Software without specific, written prior permission. Title to copyright in this Software shall at all times remain with copyright holders.

OpenLDAP is a registered trademark of the OpenLDAP Foundation. Copyright 1999-2003 The OpenLDAP Foundation, Redwood City, California, USA. All Rights Reserved.

Permission to copy and distribute verbatim copies of this document is granted.

A number of files contained in OpenLDAP Software contain a statement:

USE, MODIFICATION, AND REDISTRIBUTION OF THIS WORK IS SUBJECT TO VERSION 2.0.1 OF THE OPENLDAP PUBLIC LICENSE, A COPY OF WHICH IS AVAILABLE AT [HTTP://WWW.OPENLDAP.ORG/LICENSE.HTML](http://www.openldap.org/license.html) OR IN THE FILE "LICENSE" IN THE TOP-LEVEL DIRECTORY OF THE DISTRIBUTION.

The following is a verbatim copy of version 2.0.1 of the OpenLDAP Public License referenced in the above statement.

The OpenLDAP Public License

Version 2.0.1, 21 December 1999

Copyright 1999, The OpenLDAP Foundation, Redwood City, California, USA. All Rights Reserved.

Redistribution and use of this software and associated documentation ("Software"), with or without modification, are permitted provided that the following conditions are met:

1. Redistributions of source code must retain copyright statements and notices. Redistributions must also contain a copy of this document.
2. Redistributions in binary form must reproduce the above copyright notice, this list of conditions and the following disclaimer in the documentation and/or other materials provided with the distribution.
3. The name "OpenLDAP" must not be used to endorse or promote products derived from this Software without prior written permission of the OpenLDAP Foundation. For written permission, please contact foundation@openldap.org.
4. Products derived from this Software may not be called "OpenLDAP" nor may "OpenLDAP" appear in their names without prior written permission of the OpenLDAP Foundation. OpenLDAP is a trademark of the OpenLDAP Foundation.
5. Due credit should be given to the OpenLDAP Project (<http://www.openldap.org/>).

THIS SOFTWARE IS PROVIDED BY THE OPENLDAP FOUNDATION AND CONTRIBUTORS ``AS IS'' AND ANY EXPRESSED OR IMPLIED WARRANTIES, INCLUDING, BUT NOT LIMITED TO, THE IMPLIED WARRANTIES OF MERCHANTABILITY AND FITNESS FOR A PARTICULAR PURPOSE ARE DISCLAIMED. IN NO EVENT SHALL THE OPENLDAP FOUNDATION OR ITS CONTRIBUTORS BE LIABLE FOR ANY DIRECT, INDIRECT, INCIDENTAL, SPECIAL, EXEMPLARY, OR CONSEQUENTIAL DAMAGES (INCLUDING, BUT NOT LIMITED TO, PROCUREMENT OF SUBSTITUTE GOODS OR SERVICES; LOSS OF USE, DATA, OR PROFITS; OR BUSINESS INTERRUPTION) HOWEVER CAUSED AND ON ANY THEORY OF LIABILITY, WHETHER IN CONTRACT, STRICT LIABILITY, OR TORT (INCLUDING NEGLIGENCE OR OTHERWISE) ARISING IN ANY WAY OUT OF THE USE OF THIS SOFTWARE, EVEN IF ADVISED OF THE POSSIBILITY OF SUCH DAMAGE.

RFC 2251 Full Copyright Statement

Copyright ©The Internet Society (1997). All Rights Reserved.

This document and translations of it may be copied and furnished to others, and derivative works that comment on or otherwise explain it or assist in its implementation may be prepared, copied, published and distributed, in whole or in part, without restriction of any kind, provided that the above copyright notice and

this paragraph are included on all such copies and derivative works. However, this document itself may not be modified in any way, such as by removing the copyright notice or references to the Internet Society or other Internet organizations, except as needed for the purpose of developing Internet standards in which case the procedures for copyrights defined in the Internet Standards process must be followed, or as required to translate it into languages other than English.

The limited permissions granted above are perpetual and will not be revoked by the Internet Society or its successors or assigns.

This document and the information contained herein is provided on an "AS IS" basis and THE INTERNET SOCIETY AND THE INTERNET ENGINEERING TASK FORCE DISCLAIMS ALL WARRANTIES, EXPRESS OR IMPLIED, INCLUDING BUT NOT LIMITED TO ANY WARRANTY THAT THE USE OF THE INFORMATION HEREIN WILL NOT INFRINGE ANY RIGHTS OR ANY IMPLIED WARRANTIES OF MERCHANTABILITY OR FITNESS FOR A PARTICULAR PURPOSE.

Compilation and publication notice

Under the supervision of Brother Industries Ltd., this manual has been compiled and published, covering the latest product's descriptions and specifications.

The contents of this manual and the specifications of this product are subject to change without notice.

Brother reserves the right to make changes without notice in the specifications and materials contained herein and shall not be responsible for any damages (including consequential) caused by reliance on the materials presented, including but not limited to typographical and other errors relating to the publication.

©2006 Brother Industries Ltd.

IMPORTANT NOTE: For technical and operational assistance, you must call the country where you purchased the machine. Calls must be made **from within** that country.

In USA 1-800-284-4329

In Canada 1-877-BROTHER

In Europe Visit <http://www.brother.com> for contact information on your local Brother office.

If you have any comments or suggestions, please write to us at:

In Europe European Technical Services
1 Tame Street
Audenshaw
Manchester, M34 5JE
UK

In USA Customer Support
Brother International Corporation
100 Somerset Corporate Boulevard
Bridgewater, NJ 08807-0911

In Canada Brother International Corporation (Canada), Ltd.
- Marketing Dept.
1, rue Hôtel de Ville
Dollard-des-Ormeaux, PQ, Canada H9B 3H6

Brother fax-back system (USA)

Brother has set up an easy-to-use fax-back system so you can get instant answers to common technical questions and information about all our products. This is available 24 hours a day, seven days a week. You can use the system to send the information to any fax machine.

Call the number below and follow the recorded instructions to receive a fax about how to use the system and an Index of the subjects you can get information about.

In USA only 1-800-521-2846

Service center locator (USA)

For the location of a Brother authorized service center, call 1-800-284-4357.

Service center locations (Canada)

For the location of a Brother authorized service center, call 1-877-BROTHER.

Internet addresses

Brother Global Web Site: **<http://www.brother.com>**

For Frequently Asked Questions (FAQs), Product Support, Driver Updates and Utilities:

<http://solutions.brother.com>

(In USA Only) For Brother Accessories & Supplies: **<http://www.brothermall.com>**

Table of contents

1 Introduction

Overview	1
Network function features	2
Network printing	2
Network scanning	2
Network PC-FAX (Not available for DCP-8065DN)	2
Fax to server	2
Management utility	2
BRAdmin Professional (for Windows®)	2
BRAdmin Light (for Mac OS® X 10.2.4 or greater)	2
Remote Setup (Not available for DCP-8065DN)	3
Types of Network Connections	3
Network Connection Example	3
Peer-to-Peer printing using TCP/IP	3
Network Shared Printing	4
Protocols	5
TCP/IP Protocols	5
DHCP/BOOTP/RARP	5
APIPA	5
DNS client	5
LPR/LPD	5
Port 9100	5
SMTP client	6
IPP	6
mDNS	6
TELNET	6
SNMP	6
Web server (HTTP)	6
FTP	6
LDAP	6
IPv6	6

2 Configuring your network printer

Overview	7
IP addresses, subnet masks and gateways	7
IP address	7
Subnet mask	8
Gateway (and router)	8
Setting the IP address and subnet mask	9
Using the BRAdmin Professional utility and the TCP/IP protocol to configure your network printer (for Windows® only)	9
BRAdmin Professional utility	9
How to configure your machine using the BRAdmin Professional utility	9
Using the control panel to configure your machine for a network	10
Using other methods to configure your machine for a network	10
Changing the print server settings	10
Using the BRAdmin Professional utility to change the print server settings (for Windows® only)	10

Using a HTTP (web browser) to change the print/scan settings	11
Using the Remote Setup to change the print server settings (for Windows® and Mac OS® X 10.2.4 or greater) (Not available for DCP-8065DN)	11
Remote Setup for Windows®	11
Remote Setup for Macintosh®	12

3 Control Panel Setup

LAN Main Setup Menu.....	13
Setup TCP/IP	13
BOOT Method	13
IP Address	15
Subnet Mask	16
Gateway	16
Node Name	16
WINS Config.....	17
WINS Server.....	17
DNS Server	18
APIPA	18
IPv6	19
Ethernet	19
Setup I-Fax (MFC-8860DN only).....	20
SMTP Server address	20
POP3 Server address.....	20
Mailbox Name.....	21
Mailbox Pwd	21
Setup Mail RX (MFC-8860DN only)	22
Auto Polling	22
Poll Frequency.....	22
Header.....	22
Del Error Mail.....	23
Notification	23
Setup Mail TX (MFC-8860DN only).....	23
Sender Subject.....	23
Size Limit.....	24
Notification	24
Setup Relay (MFC-8860DN only).....	25
Rly Broadcast	25
Relay Domain	25
Relay Report.....	26
Scan to E-mail (E-mail server) (MFC-8860DN only)	26
Colour File Type for Scan to E-mail (E-mail server)	26
Black and White File Type for Scan to E-mail (E-mail server).....	26
Scan to FTP	27
Colour File Type for Scan to FTP	27
Black and White File Type for Scan to FTP.....	27
Fax to Server (MFC-8860DN only).....	28
Setting Fax to Server to On	29
How to Operate	29
Time Zone (MFC-8860DN only)	30
Windows® Time Zone Setting.....	30
Restoring the network settings to factory default.....	30
Printing the Network Configuration List	31

4	Network printing from Windows® basic TCP/IP Peer-to-Peer printing	
	Overview	32
	For Windows® 98/Me/NT®/2000/XP users.....	32
	Configuring the standard TCP/IP port	32
	Printer driver not yet installed	32
	Printer driver already installed	33
	For Windows NT® 4.0 users	33
	Installing the TCP/IP protocol	33
	Other sources of information	34
5	Internet printing for Windows®	
	Overview	35
	Quick Tips.....	35
	Brother Internet Print General Information	35
	Brother Internet Print: Configuring the Brother Print Server	36
	Print Server Configuration Checklist.....	36
	Brother Internet Print: Using the BRAdmin Professional utility to Configure the Print Server	37
	Brother Internet Print: Using a Web Browser to Configure the Print Server	38
	Brother Internet Print: Installing the BIP software on Windows® 98/Me/2000/XP and Windows NT® 4.0	38
	Setup from CD-ROM	38
	Adding a Second Brother Internet Port.....	40
	Windows® 2000/XP IPP printing.....	41
	Specifying a different URL.....	43
	Other sources of information	43
6	Network printing from a Macintosh®	
	Overview	44
	How to select the print server (TCP/IP) (Mac OS® X 10.2.4 or greater)	44
	How to select the print server (TCP/IP) (Mac OS® 9.1 - 9.2)	46
	Changing the print server settings	48
	Changing the configuration using a web browser.....	48
	Changing the configuration using the Remote Setup	48
	Using the BRAdmin Light utility to change the print server settings (for Mac OS® X 10.2.4 or greater)	48
	Other sources of information	49
7	Web Based Management	
	Overview	50
	How to connect to your machine using a Browser	51
	Password Information	51
	Changing the Scan to FTP configuration using a Browser (Not available for DCP-8065DN)	51
	Changing the LDAP configuration using a Browser (MFC-8860DN only)	52
8	LDAP Operation (MFC-8860DN only)	
	Overview	53

Changing the LDAP configuration using a Browser	53
LDAP operation using the control panel	53

9 Internet FAX (MFC-8860DN only)

Overview	55
Getting Connected	55
Control Panel Key Functions	56
Sending an Internet Fax	56
Manually Entering Text	57
Receiving E-mail or Internet Fax	57
Receiving an Internet Fax to a PC	58
Forwarding Received E-mail and Fax Messages	58
Relay Broadcasting	58
Relay Broadcast from a machine	59
Sending to multiple phone numbers:	59
Outlook 97/98/2000/2002/2003:	60
TX Verification Mail	60
Setup Mail (TX)	61
Setup Mail (RX)	61
Error mail	61
Important information on Internet Fax	62

10 Troubleshooting

Overview	63
General problems	63
CD-ROM is inserted, but does not start automatically	63
How to reset the Brother print server to factory default	63
Network print software installation problems	63
The Brother print server is not found during setup of the network print software installation or from the printer driver of the Brother machine in Windows®	63
The Brother print server is not found using the Simple Network Configuration capabilities of Mac OS® X.	63
Printing problems	66
Print job is not printed	66
Error during printing	67
Protocol-specific troubleshooting	67
Windows® 2000/XP IPP troubleshooting	67
Want to use a different Port number other than 631.	67
Get More Info option in Windows® 2000 not working	67
Web browser troubleshooting (TCP/IP)	68
LDAP troubleshooting	68

A Appendix A

Using services	69
Other ways to set the IP address (for advanced users and Administrators)	69
Using DHCP to configure the IP address	69
Using BOOTP to configure the IP address	70
Using RARP to configure the IP address	70
Using APIPA to configure the IP address	71
Using ARP to configure the IP address	71

Windows® systems	71
UNIX®/Linux systems	72
Using the TELNET console to configure the IP address	72
Using the Brother Web BAdmin server software for IIS* to configure the IP address	73
Installation when using a Network Print Queue or Share (printer driver only)	74
Multi-function Print Server specifications.....	75
Function Table and Default Factory Settings.....	76
Entering Text	78

Index

Overview

The Brother machine can be shared on a 10/100 MB wired Ethernet network using the internal network print server. The print server supports various functions and methods of connection depending on the operating system you are running on a network supporting TCP/IP. These functions include printing, scanning, PC-FAX send, PC-FAX receive, Remote Setup and Status Monitor. The following chart shows what network features and connections are supported by each operating system.

Operating Systems	10/100 BASE-TX Wired Ethernet (TCP/IP)	Printing	Scanning	PC-Fax Send*	PC-Fax Receive*	Remote Setup*	Status Monitor
Windows® 98/98SE/Me/2000/XP/XP Professional x64 Edition	√	√	√	√	√	√	√
Windows NT® 4.0	√	√		√			√
Mac OS® X 10.2.4 or greater	√	√	√	√		√	√
Mac OS® 9.1-9.2	√	√		√			

■ * PC-FAX Send, PC-FAX Receive and Remote Setup functions are not available for DCP-8065DN

To use the Brother machine through a network, you need to configure the print server, and set up the computers you use.

In this chapter, you will learn the basic concept of the network function, connection and protocols. In Chapter 2, you will read information on network configuration. In Chapter 3, you will learn how to configure the print server using the control panel. Chapter 4 through Chapter 6 describe how to configure your print server with your operating system:

Chapter 2: Configuring your network printer

Chapter 3: Control Panel Setup

Chapter 4: Network printing from Windows® basic TCP/IP Peer-to-Peer printing

Chapter 5: Internet printing for Windows®

Chapter 6: Network printing from a Macintosh®

Network function features

Brother machine has the following basic network functions.

Network printing

The print server provides printing services for Windows® 98/98SE/Me/NT®/2000/XP supporting the TCP/IP protocols and Macintosh® supporting TCP/IP (Mac OS® 9.1-9.2 / Mac OS® X 10.2.4 or greater for a wired network).

Network scanning

You can scan documents over the network to your computer or to a central server (See Chapter 4 for Windows® and Chapter 10 for Macintosh® of the Software User's Guide on the CD-ROM).

Network PC-FAX (Not available for DCP-8065DN)

You can directly send and receive a PC file as a PC-FAX on your network (See Chapter 6 for Windows® and Chapter 7 for Macintosh® of the Software User's Guide on the CD-ROM for complete description).

Fax to server

The Fax to Server feature allows the machine to scan documents and send them via a separate fax server. Unlike Internet Fax or I-Fax, the Fax to Server feature utilizes a server to send the documents as fax data over phone or T-1 lines.

Management utility

BRAdmin Professional (for Windows®)

The BRAdmin Professional utility provides powerful, easy to use configuration and management of fax and network settings.

BRAdmin Light (for Mac OS® X 10.2.4 or greater)

BRAdmin Light is a utility for viewing machine status and configuring network settings from a computer running Mac OS® X 10.2.4 or greater.

Remote Setup (Not available for DCP-8065DN)

The Remote Setup software allows you to configure network settings from a Windows® or Macintosh® (Mac OS® X 10.2.4 or greater). (See Chapter 5 for Windows® and Chapter 11 for Macintosh® of the Software User's Guide on the CD-ROM).

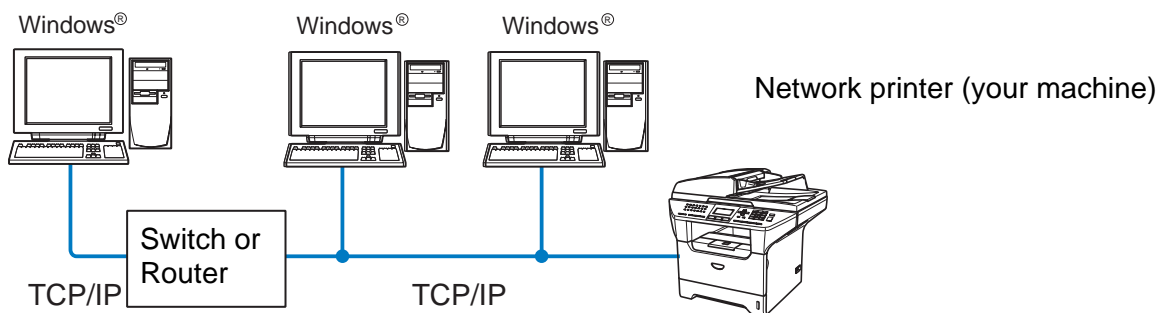
Types of Network Connections

Generally speaking, there are two types of networks: A Peer-to-Peer network and a shared Network.

Network Connection Example

Peer-to-Peer printing using TCP/IP

In a Peer-to-Peer environment, each computer directly sends and receives data to each device. There is no central server controlling File access or Printer sharing.

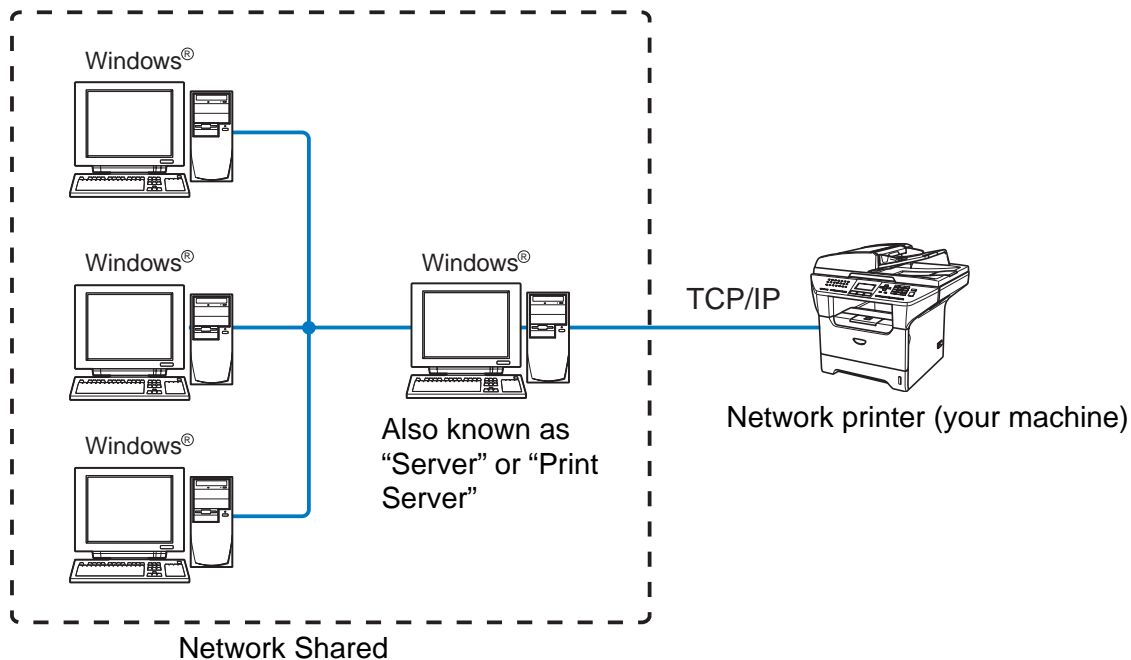


- In a smaller network of 2 or 3 computers, we recommend the Peer-to-Peer printing method as it is easier to configure than the Network Shared Printing method described on the following page. See *Network Shared Printing* on page 1-4.
- Each computer must use the TCP/IP Protocol.
- The Brother machine needs an appropriate IP address configuration.
- If you are using a router, the Gateway address must be configured on the computers and the Brother machine.

Network Shared Printing

In a Network Shared environment, each computer sends data via a centrally controlled computer. This type of computer is often called a “Server” or a “Print Server”. Its job is to control the printing of all print jobs.

1



- In a larger network, we recommend a Network Shared printing environment.
- The “Server” or the “Print Server” must use the TCP/IP Print Protocol.
- The Brother machine needs an appropriate IP address configuration unless the machine is shared via the parallel port or USB port of the server.

Protocols

TCP/IP Protocols

Protocols are the standardized sets of rules for transmitting data on a network. Protocols allow users to gain access to network-connected resources.

The print server used on this Brother product supports the TCP/IP (Transmission Control Protocol/Internet Protocol) protocols.

TCP/IP is the most popular set of protocols and can be used in almost all operating systems such as Windows®, Macintosh® and Linux.

The following TCP/IP protocols are available on this Brother product.

DHCP/BOOTP/RARP

By using the DHCP/BOOTP/RARP protocols, the IP address can be automatically configured.

**Note**

To use the DHCP/BOOTP/RARP protocols, please contact your Network Administrator.

APIPA

If you do not assign an IP address manually (using the MFL-Pro Suite Installation or BRAdmin software) or automatically (using a DHCP/BOOTP/RARP server), the Automatic Private IP Addressing (APIPA) protocol will automatically assign an IP address from the range 169.254.1.0 to 169.254.254.255.

DNS client

The Brother print server supports the Domain Name Service (DNS) client function. This function allows the print server to communicate with other devices by using its DNS name.

LPR/LPD

Commonly used printing protocol on a TCP/IP network.

Port 9100

Another commonly used printing protocol on a TCP/IP network.

SMTP client

The Simple Mail Transfer Protocol (SMTP) allows the Brother machine to send and receive e-mails.

IPP

The Internet Printing Protocol (IPP Version 1.0) allows you to print documents via the internet.

mDNS

mDNS allows the Brother print server to automatically configure itself to work in a Mac OS® X Simple Network Configured system. (Mac OS® X 10.2.4 or greater).

TELNET

The Brother print server supports TELNET server for command line configuration.

SNMP

Simple Network Management Protocol (SNMP) is used to manage network devices including computers, routers and Brother network ready machines.

Web server (HTTP)

The Brother print server is equipped with a built in web server that allows you to monitor its status or change its configuration settings.



Note

We recommend Internet Explorer 6.0 (or higher) or Netscape Navigator 7.1 (or higher). If a different web browser is used, make sure it is compatible with HTTP 1.0 and HTTP 1.1.

FTP

File Transfer Protocol (FTP) allows the Brother machine to scan black and white or colour documents directly to an FTP server located locally on your network or on the internet.

LDAP

Lightweight Directory Access Protocol (LDAP) allows the Brother machine to search for information such as fax numbers and E-mail addresses from an LDAP server.

IPv6

This machine is compatible with the IPv6, the next generation internet protocol. For more information on the IPv6 protocol, visit <http://solutions.brother.com>.

Overview

Before you can use your Brother machine on your network, you need to install the Brother software and also configure the appropriate TCP/IP network settings on the machine itself. To do this, we recommend that you use the automatic installer on the Brother CD-ROM as this will guide you through the software and network installation.

If you do not wish to use the automatic installer, or you do not understand some of the terms used by the automatic installer, refer to the remainder of this chapter for more information.



Note

If you do not wish to, or are unable to use the automatic installer or any of Brother's software tools, you can also use the machine's control panel to change network settings. For more information, see *Control Panel Setup* on page 13.

IP addresses, subnet masks and gateways

To use the machine in a networked TCP/IP environment, you need to configure its IP address and subnet mask. The IP address you assign to the print server must be on the same logical network as your host computers. If it is not, you must properly configure the subnet mask and the gateway address.

IP address

An IP address is a series of numbers that identifies each device connected to a network. An IP address consists of four numbers separated by dots. Each number is between 0 and 255.

Example: In a small network, you would normally change the final number.

192.168.1.1, 192.168.1.2, 192.168.1.3

If you have a DHCP/BOOTP/RARP server in your network (typically a UNIX®/Linux or Windows® 2000/XP network) the print server will automatically obtain its IP address from that server.



Note

On smaller networks, the DHCP server may be the Router.

For more information on DHCP, BOOTP and RARP, see *Using DHCP to configure the IP address* on page 69, *Using BOOTP to configure the IP address* on page 70 and *Using RARP to configure the IP address* on page 70.

If you do not have a DHCP/BOOTP/RARP server, the Automatic Private IP Addressing (APIPA) protocol will automatically assign an IP address from the range 169.254.1.0 to 169.254.254.255. For more information on APIPA, see *Using APIPA to configure the IP address* on page 71.

If the APIPA protocol is disabled, the default IP address of a Brother print server is 192.0.0.192. However, you can easily change this IP address number to match with the IP address details of your network. For information on how to change the IP address, see *Setting the IP address and subnet mask* on page 9.

Subnet mask

Subnet masks restrict network communication.

Example: PC1 can talk to PC2

PC1 IP Address: 192.168.1.2
Subnet Mask: 255.255.255.0

PC2 IP Address: 192.168.1.3
Subnet Mask: 255.255.255.0



Note

0 denotes that there is no limit to communication at this part of the address.

In the above example, we can communicate with anything that has an IP address that begins with 192.168.1.X

Gateway (and router)

A gateway is a network point that acts as an entrance to another network and sends data transmitted via the network to an exact destination. The router knows where to direct data that arrives at the gateway. If a destination is located at an external network, the router transmits data to the external network. If your network communicates with other networks, you may need to configure the Gateway IP address. If you do not know the Gateway IP address then contact your Network Administrator.

Setting the IP address and subnet mask

Using the BRAdmin Professional utility and the TCP/IP protocol to configure your network printer (for Windows® only)

2

BRAdmin Professional utility

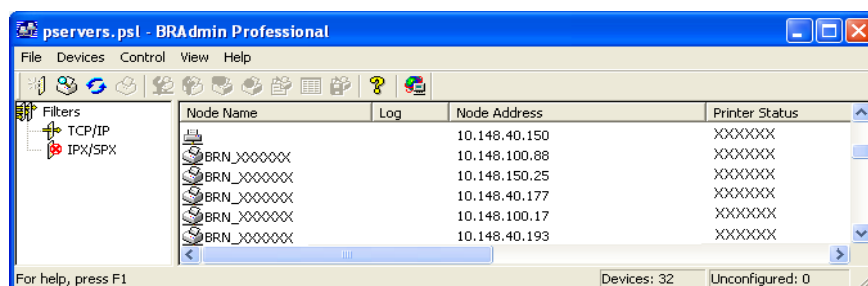
The BRAdmin Professional utility is designed to allow you to manage your network connected Brother machines in a TCP/IP environment.

How to configure your machine using the BRAdmin Professional utility

Note

- Please use the BRAdmin Professional utility that was supplied on the CD-ROM of your Brother product. You can also download the latest Brother BRAdmin Professional utility from <http://solutions.brother.com>. This utility is only available for Windows® users.
- If you are using Personal Firewall software (e.g. the Internet Connection Firewall available in Windows® XP), disable it. Once you are sure that you can print, re-start your Personal Firewall software.
- Node name: Node name appears in current BRAdmin Professional window. The default Node name is "BRN_XXXXXX" ("XXXXXX" is the last six digits of Ethernet address.).
- The default password for Brother print servers is "access".

- 1 Start the BRAdmin Professional utility (from Windows® 98/98SE/Me, Windows NT® 4.0 and Windows® 2000/XP), by clicking **Start / Programs / Brother Administrator Utilities / Brother BRAdmin Professional Utilities / BRAdmin Professional**.
- 2 Select **TCP/IP** in the left frame of the main BRAdmin window.
- 3 Select **Search Active Devices** from the **Devices** menu. BRAdmin Professional will search for new devices automatically.





Note

- If the print server is set to its factory default settings without using a DHCP/BOOTP/RARP server, the device will appear as an APIPA device in the BRAdmin Professional utility screen.
- You can find the node name and IP address by printing the Network Configuration List. See *Printing the Network Configuration List* on page 31 for information on how to print the Network Configuration List on your print server.

- 4 Double-click the unconfigured device.
- 5 Enter the **IP address**, **Subnet Mask** and **Gateway** (if needed) of your print server.
- 6 Click **OK**.
- 7 With the correctly programmed IP address, you will see the Brother print server in the device list.

Using the control panel to configure your machine for a network

You can configure your machine for a network using the control panel LAN menu. See *Control Panel Setup* on page 13.

Using other methods to configure your machine for a network

You can configure your machine for a network using other methods. See *Other ways to set the IP address (for advanced users and Administrators)* on page 69.

Changing the print server settings

Using the BRAdmin Professional utility to change the print server settings (for Windows® only)

- 1 Start the BRAdmin Professional utility (from Windows® 98/Me, Windows NT® 4.0 and Windows® 2000/XP), by clicking **Start / Programs / Brother Administrator Utilities / Brother BRAdmin Professional Utilities / BRAdmin Professional**.
- 2 Select **TCP/IP** in the left frame of the main BRAdmin window.
- 3 Select the print server which you want to configure, in the right frame of the main BRAdmin window.
- 4 Select **Configure Print Server** from the **Control** menu.
- 5 Enter a password. The default Password is “**access**”.

- 6** You can now change the print server settings.

Using a HTTP (web browser) to change the print/scan settings

A standard web browser (we recommend Microsoft Internet Explorer® version 6.0 or later, or Netscape Navigator® version 7.1 or later) can be used to change your print server settings using the HTTP (Hyper Text Transfer Protocol). To use a web browser, you must have assigned an IP address to the print server.

- 1** Type `http://printer_ip_address/` into your browser. (Where `printer_ip_address` is the IP address or the print server name)

For example: `http://192.168.1.2/` (if the printer's IP address is 192.168.1.2.)



Note

If you have edited the hosts file on your computer or are using Domain Name System (DNS), you can also enter the DNS name of the print server. As the print server supports TCP/IP and NetBIOS names, you can also enter the NetBIOS name of the print server. The NetBIOS name can be seen in the Network Configuration List. See *Printing the Network Configuration List* on page 31 for information on how to print the Network Configuration List on your print server. The NetBIOS name assigned is the first 15 characters of the node name and by default it will appear as `BRN_XXXXXX` where `XXXXXX` is the last six digits of the Ethernet address.

- 2** Click **Network Configuration**.
- 3** Enter a user name and a password. The User Name is “**admin**” and the default Password is “**access**”.
- 4** Click **OK**.
- 5** Click **Configure TCP/IP**.
- 6** You can now change the printer server settings.

Using the Remote Setup to change the print server settings (for Windows® and Mac OS® X 10.2.4 or greater) (Not available for DCP-8065DN)

Remote Setup for Windows®

The Remote Setup application allows you to configure network settings from a Windows® application. When you access this application, the settings on your machine will be downloaded automatically to your PC and displayed on your PC screen. If you change the settings, you can upload them directly to the machine.

- 1** Click the **Start** button, **All Programs**, **Brother**, **MFL-Pro Suite MFC-XXXX**, **Remote Setup**, then **MFC-XXXX LAN** (where XXXX is your model name).
- 2** Enter a password. The default Password is “**access**”.

3 Click **TCP/IP**.

4 You can now change the print server settings.

Remote Setup for Macintosh®

The Remote Setup application allows you to configure many MFC settings from a Macintosh® application. When you access this application, the settings on your machine will be downloaded automatically to your Macintosh® and displayed on your Macintosh® screen. If you change the settings, you can upload them directly to the machine.

1 Double click the **Macintosh HD** icon on your desktop, **Library**, **Printers**, **Brother**, then **Utilities**.

2 Double click the **Remote Setup** icon.

3 Enter a password. The default Password is “**access**”.

4 Click **TCP/IP**.

5 You can now change the print server settings.

LAN Main Setup Menu

The control panel LAN menu section can be used to configure network settings.

Press **Menu**, then press number **6** for MFC-8460N and MFC-8860DN, **4** for DCP-8065DN and then proceed to the menu selection you wish to configure.

Please note that the machine is supplied with Remote Setup applications for Windows® and Macintosh®, the BRAdmin Professional utility for Windows®, BRAdmin Light utility for Mac OS® X 10.2.4 or greater and HTTP protocol (web based management) for Windows® and Macintosh®, which also can be used to configure many aspects of the network. See *Changing the print server settings* on page 10 for Windows® and *Changing the print server settings* on page 48 for Macintosh®.

Setup TCP/IP

This menu has ten sections: **Boot Method**, **IP Address**, **Subnet Mask**, **Gateway**, **Node Name**, **WINS Config**, **WINS Server**, **DNS Server**, **APIPA** and **IPv6**.

BOOT Method

- 1** (For MFC-8460N and MFC-8860DN) Press **Menu**, **6**, **1**, **1**.
(For DCP-8065DN) Press **Menu**, **4**, **1**, **1**.
- 2** Press **▲** or **▼** to select **Auto**, **Static**, **RARP**, **BOOTP** or **DHCP**.
- 3** Press **OK**.
- 4** Press **Stop/Exit**.

Auto mode

In this mode, the machine will scan the network for a DHCP server, if it can find one, and if the DHCP server is configured to allocate an IP address to the machine, then the IP address supplied by the DHCP server will be used. If no DHCP server is available, the machine will scan for a BOOTP server. If a BOOTP server is available, and it is configured correctly, the machine will take its IP address from the BOOTP server. If a BOOTP server is not available, the machine will scan for a RARP server. If a RARP server also does not answer, the machine will use an APIPA address, see *Using APIPA to configure the IP address* on page 71. This whole process can take 2 to 3 minutes so we recommend printing a Network Configuration List to confirm the network settings are set correctly.

Static mode

In this mode the machine's IP address must be manually assigned. Once entered the IP address is locked to the assigned address.

RARP mode

Brother print server IP address can be configured using the Reverse ARP (RARP) facility on your host computer. This is done by editing the `/etc/ethers` file (if this file does not exist, you can create it) with an entry similar to the following:

```
00:80:77:31:01:07    BRN_310107
```

Where the first entry is the Ethernet address of the print server and the second entry is the name of the print server (the name must be the same as the one you put in the `/etc/hosts` file).

If the RARP daemon is not already running, start it (depending on the system the command can be `rarpd`, `rarpd -a`, `in.rarpd -a` or something else; type `man rarpd` or refer to your system documentation for additional information). To verify that the RARP daemon is running on a Berkeley UNIX-based system, type the following command:

```
ps -ax | grep -v grep | grep rarpd
```

For AT&T UNIX-based systems, type:

```
ps -ef | grep -v grep | grep rarpd
```

The Brother print server will get the IP address from the RARP daemon when it is powered on.

BOOTP mode

BOOTP is an alternative to RARP. However, unlike RARP, it is able to configure the subnet mask and gateway. In order to use BOOTP to configure the IP address make sure that BOOTP is installed and running on your host computer (it should appear in the `/etc/services` file on your host as a real service; type `man bootpd` or refer to your system documentation for information). BOOTP is usually started up via the `/etc/inetd.conf` file, so you may need to enable it by removing the “#” in front of the bootp entry in that file. For example, a typical bootp entry in the `/etc/inetd.conf` file would be:

```
#bootp dgram udp wait /usr/etc/bootpd bootpd -i
```



Note

Depending on the system, this entry might be called “bootps” instead of “bootp”.

In order to enable BOOTP, simply use an editor to delete the “#” (if there is no “#”, then BOOTP is already enabled). Then edit the BOOTP configuration file (usually `/etc/bootptab`) and enter the name, network type (1 for Ethernet), Ethernet address and the IP address, subnet mask and gateway of the print server. Unfortunately, the exact format for doing this is not standardized, so you will need to refer to your system documentation to determine how to enter this information (many UNIX® systems also have template examples in the `bootptab` file that you can use for reference). Some examples of typical `/etc/bootptab` entries include:

```
BRN_310107 1 00:80:77:31:01:07 192.189.207.3
```

and:

```
BRN_310107:ht=ethernet:ha=008077310107:\  
ip=192.189.207.3:
```


Certain BOOTP host software implementations will not respond to BOOTP requests if you have not included a download filename in the configuration file; if this is the case, simply create a null file on the host and specify the name of this file and its path in the configuration file.

As with RARP, the print server will load its IP address from the BOOTP server when the printer is powered on.

DHCP mode

Dynamic Host Configuration Protocol (DHCP) is one of several automated mechanisms for IP address allocation. If you have a DHCP server in your network (typically a UNIX®, Windows® 2000/XP network) the print server automatically obtains its IP address from DHCP server and register its name with any RFC 1001 and 1002-compliant dynamic name services.



Note

If you do not want your print server to be configured using DHCP, BOOTP or RARP, you must set the BOOT METHOD to static, this will prevent the print server from trying to obtain an IP address from any of these systems. To change the BOOT METHOD, use the control panel, Web browser or by using the BRAdmin application.

IP Address

This field displays the current IP address of the machine. If the BOOT Method is set to Static, enter the IP address that you wish to assign to the machine (check with your network manager for the IP address to use). If you have selected a method other than Static, the machine will attempt to determine its IP address using the DHCP, RARP or BOOTP protocols. The default IP address of your machine will probably be incompatible with the IP address numbering scheme of your network. We recommend that you contact your network manager for the correct IP address settings.

1 (For MFC-8460N and MFC-8860DN) Press **Menu, 6, 1, 2.**

(For DCP-8065DN) Press **Menu, 4, 1, 2.**

2 Select **1** to change. Enter the IP address.

3 Press **OK.**

4 Press **Stop/Exit.**

Subnet Mask

This field displays the current subnet mask used by the machine. If you are not using DHCP or BOOTP to obtain the subnet mask, enter the desired subnet mask. Check with your network manager for the subnet mask to use.

1 (For MFC-8460N and MFC-8860DN) Press **Menu, 6, 1, 3.**

(For DCP-8065DN) Press **Menu, 4, 1, 3.**

2 Select **1** to change. Enter the Subnet Mask address.

3 Press **OK.**

4 Press **Stop/Exit.**

Gateway

This field displays the current gateway or router address used by the machine. If you are not using DHCP or BOOTP to obtain the gateway or router address, enter the address you wish to assign. If you do not have a gateway or router, leave this field blank. Check with your network manager if you are unsure.

1 (For MFC-8460N and MFC-8860DN) Press **Menu, 6, 1, 4.**

(For DCP-8065DN) Press **Menu, 4, 1, 4.**

2 Enter the Gateway address.

3 Press **OK.**

4 Press **Stop/Exit.**

Node Name

You can register the machine name on the Network. This name is often referred to as a NetBIOS name; and is the name that is registered by the WINS server on your network. Brother recommends the name BRN_XXXXXX (where XXXXXX is the last six digits of the Ethernet address) (up to 15 characters).

1 (For MFC-8460N and MFC-8860DN) Press **Menu, 6, 1, 5.**

(For DCP-8065DN) Press **Menu, 4, 1, 5.**

2 Select **1** to change. Enter the Node Name.

3 Press **OK.**

4 Press **Stop/Exit.**

WINS Config

This selection controls how the machine obtains the IP address of the WINS server.

1 (For MFC-8460N and MFC-8860DN) Press **Menu, 6, 1, 6.**

(For DCP-8065DN) Press **Menu, 4, 1, 6.**

2 Press **▲** or **▼** to select *Auto* or *Static*.

3 Press **OK**.

4 Press **Stop/Exit**.

Auto

Automatically uses a DHCP request to determine the IP addresses for the primary and secondary WINS servers. You must set the BOOT Method to Auto for this feature to work.

Static

Uses a specified IP address for the primary and secondary WINS servers.

WINS Server

1 (For MFC-8460N and MFC-8860DN) Press **Menu, 6, 1, 7.**

(For DCP-8065DN) Press **Menu, 4, 1, 7.**

2 Press **▲** or **▼** to select *Primary* or *Secondary*.

3 Press **OK**.

4 Enter the WINS Server address.

5 Press **OK**.

6 Press **Stop/Exit**.

Primary WINS Server IP Address

This field specifies the IP address of the primary WINS (Windows® Internet Naming Service) server.

Secondary WINS Server IP Address

This field specifies the IP address of the secondary WINS server. It is used as a backup to the Primary WINS server address. If the Primary server is unavailable, the machine still can register itself with a secondary server. If you have a primary WINS server, but no secondary WINS server, simply leave this field blank.

DNS Server

1 (For MFC-8460N and MFC-8860DN) Press **Menu, 6, 1, 8**.

(For DCP-8065DN) Press **Menu, 4, 1, 8**.

2 Press **▲** or **▼** to select **Primary** or **Secondary**.

3 Press **OK**.

4 Enter the DNS Server address.

5 Press **OK**.

6 Press **Stop/Exit**.

Primary DNS Server IP Address

This field specifies the IP address of the primary DNS (Domain Name Service) server.

Secondary DNS Server IP Address

This field specifies the IP address of the secondary DNS server. It is used as a backup to the Primary DNS server address. If the Primary server is unavailable, the machine will contact the Secondary DNS server.

APIPA

When enabled, the print server will automatically allocate a IP address in the range (169.254.1.0 - 169.254.254.255) when the print server cannot obtain an IP address through the BOOT Method you have set (**Menu, 6, 1, 1** for MFC-8460N and MFC-8860DN, **Menu, 4, 1, 1** for DCP-8065DN). Selecting Off means the IP address doesn't change, when the print server cannot obtain an IP address through the BOOT Method you have set.

1 (For MFC-8460N and MFC-8860DN) Press **Menu, 6, 1, 9**.

(For DCP-8065DN) Press **Menu, 4, 1, 9**.

2 Press **▲** or **▼** to select **On** or **Off**.

3 Press **OK**.

4 Press **Stop/Exit**.

IPv6

This machine is compatible with IPv6, the next generation internet protocol. If you want to use the IPv6 protocol, select **On**. The default setting for IPv6 is **Off**. For more information on the IPv6 protocol, visit <http://solutions.brother.com>.

1 Press (For MFC-8460N and MFC-8860DN) **Menu, 6, 1, 0**.

(For DCP-8065DN) Press **Menu, 4, 1, 0**.

2 Press **▲** or **▼** to select **On** or **Off**.

3 Press **OK**.

4 Press **Stop/Exit**.

Ethernet

Ethernet link mode. Auto allows the print server to operate in 100BASE TX full or half duplex, or in 10BASE T full or half duplex mode.

100BASE TX Full Duplex (100B-FD) or Half Duplex (100B-HD) and 10BASE T Full Duplex (10B-FD) or Half Duplex (10B-HD) fix the print server link mode. This change is valid after the print server has been reset (default is **Auto**).



Note

If you incorrectly set this value, you may not be able to communicate with your print server.

1 (For MFC-8460N and MFC-8860DN) Press **Menu, 6, 2**.

(For DCP-8065DN) Press **Menu, 4, 2**.

2 Press **▲** or **▼** to select **Auto/100B-FD/100B-HD/10B-FD/10B-HD**.

3 Press **OK**.

4 Press **Stop/Exit**.

Setup I-Fax (MFC-8860DN only)

This menu has five selections: **Mail Address**, **SMTP Server**, **POP3 Server**, **Mailbox Name** and **Mailbox Pwd**. As this section requires you to enter a lot of text characters, you may find that it is more convenient to use your favorite web browser to configure these settings. (See *Web Based Management* on page 50. For more details about Internet Fax, see *Internet FAX (MFC-8860DN only)* on page 55.)

Mail Address

- 1** Press **Menu**, **6**, **3**, **1**, **1**.
- 2** Select **1** to change. Enter the mail address. Press **OK**.
- 3** Press **Stop/Exit**.

Entering text

You can access the character you want by repeatedly pressing the appropriate number key. For more information, see *Entering Text* on page 78.

SMTP Server address

This field displays the Node Name or IP address of an SMTP mail server (outgoing E-mail Server) on your network.

(Ex, mailhost.brothermail.net -or- 192.000.000.001)

- 1** Press **Menu**, **6**, **3**, **1**, **2**.
- 2** Press **▲** or **▼** to select **Name** or **IP Address**.
- 3** Enter the SMTP SERVER Address.
- 4** Press **OK**.
- 5** Press **Stop/Exit**.

POP3 Server address

This field displays the Node Name or IP address of the POP3 server (incoming E-mail server) used by the Brother machine. This address is necessary for the Internet Fax features to function correctly.

(Ex, mailhost.brothermail.net -or- 192.000.000.001)

- 1** Press **Menu** **6**, **3**, **1**, **3**.

- 2** Press **▲** or **▼** to select **Name** or **IP Address**.
- 3** Enter the POP3 Server Address.
- 4** Press **OK**.
- 5** Press **Stop/Exit**.

Mailbox Name

You can specify a mailbox name on the POP3 server where the internet print jobs are to be retrieved.

- 1** Press **Menu, 6, 3, 1, 4**.
- 2** Enter the user account name assigned to the Brother machine that will login to the POP3 Server.
- 3** Press **OK**.
- 4** Press **Stop/Exit**.

Mailbox Pwd

You can specify password on the POP3 server where the internet print jobs are to be retrieved.

- 1** Press **Menu, 6, 3, 1, 5**.
- 2** Enter the user password assigned to the machine that will login to the POP3 Server. Please note that this password is case sensitive.
- 3** Press **OK**.
- 4** Press **OK** again to verify the password.
- 5** Press **Stop/Exit**.



Note

To set for no password, enter a single space.

Setup Mail RX (MFC-8860DN only)

This menu has five selections **Auto Polling**, **Poll Frequency**, **Header**, **Del Error Mail** and **Notification**.

Auto Polling

When set to **On** the machine automatically checks the POP3 server for new messages. "No Mail" will be displayed if there are no E-mail messages when the POP3 server is polled.

- 1** Press **Menu**, **6**, **3**, **2**, **1**.
- 2** Press **▲** or **▼** to select **On** or **Off**.
- 3** Press **OK**.
- 4** Press **Stop/Exit**.

Poll Frequency

Sets the interval for checking for new messages on the POP3 server (default is 10Min).

- 1** Press **Menu**, **6**, **3**, **2**, **2**.
- 2** Enter the polling frequency.
- 3** Press **OK**.
- 4** Press **Stop/Exit**.

Header

This selection allows the contents of the mail header to be printed when the received message is printed (Subject+From+To or All or None).

- 1** Press **Menu**, **6**, **3**, **2**, **3**.
- 2** Press **▲** or **▼** to select **All** or **Subject+From+To** or **None**.
- 3** Press **OK**.
- 4** Press **Stop/Exit**.

Del Error Mail

When set to **On**, the machine automatically deletes error mails that the machine can not receive from the POP server.

- 1** Press **Menu**, **6**, **3**, **2**, **4**.
- 2** Press **▲** or **▼** to select **On** or **Off**.
- 3** Press **OK**.
- 4** Press **Stop/Exit**.

Notification

The notification feature allows a confirmation of receipt message to be transmitted to the sending station When the I-Fax has been received.

This feature only works on I-Fax machines that support the “MDN” specification.

- 1** Press **Menu**, **6**, **3**, **2**, **5**.
- 2** Press **▲** or **▼** to select **On** or **MDN** or **Off**.
- 3** Press **OK**.
- 4** Press **Stop/Exit**.

Setup Mail TX (MFC-8860DN only)

This menu has three selections **Sender Subject**, **Size Limit** and **Notification**.

Sender Subject

This field displays the subject that is attached to the Internet Fax data being sent from the Brother machine to a PC (default is “Internet Fax Job”).

- 1** Press **Menu**, **6**, **3**, **3**, **1**.
- 2** Select **1** to change the Sender Subject—**OR**—**2** to exit.
- 3** Enter the subject information.
- 4** Press **OK**.
- 5** Press **Stop/Exit**.

Size Limit

Some E-mail servers do not allow you to send large E-mail documents. (the System Administrator will often place a limit on the maximum E-mail size). With this function enabled, the machine will display **Out of Memory** when trying to send E-mail documents over 1Mbyte in size. The document will not be sent and an error report will be printed. The document you are sending should be separated into smaller documents that will be accepted by the mail server. (For your information, a 42 page document based on the ITU-T Test Chart#1 test chart is approximately 1Mbyte in size).

- 1** Press **Menu**, **6**, **3**, **3**, **2**.
- 2** Press **▲** or **▼** to select **On** or **Off**.
- 3** Press **OK**.
- 4** Press **Stop/Exit**.

Notification

The notification feature allows a confirmation of receipt message to be transmitted to the sending station When the I-Fax has been received.

This feature only works on I-Fax machines that support the "MDN" specification.

- 1** Press **Menu**, **6**, **3**, **3**, **3**.
- 2** Press **▲** or **▼** to select **On** or **Off**.
- 3** Press **OK**.
- 4** Press **Stop/Exit**.

Setup Relay (MFC-8860DN only)

This menu has three selections **Rly Broadcast**, **Relay Domain** and **Relay Report**. For more information on Relay Broadcast, see *Relay Broadcasting* on page 58 of this User's Guide.

Rly Broadcast

This function allows the machine to receive a document over the Internet, and then relay it to other fax machines through conventional analog landlines

- 1** Press **Menu**, **6**, **3**, **4**, **1**.
- 2** Press **▲** or **▼** to select **On** or **Off**.
- 3** Press **OK**.
- 4** Press **Stop/Exit**.

Relay Domain

You can register the Domain Names (Max.10) that are allowed to request a Relay Broadcast.

- 1** Press **Menu**, **6**, **3**, **4**, **2**.
- 2** Press **▲** or **▼** to select the **Relay Domain** (01 - 10).
- 3** Press **OK**.
- 4** Enter the Relay Domain name for the Domain that is being allowed to request a Relay Broadcast.
- 5** Press **OK**.
- 6** Press **Stop/Exit**.

Relay Report

A Relay Broadcast Report can be printed at the machine that will act as a Relay Station for all Relay Broadcasts. When the machine is used with the Brother Network PC Fax software the machine is also acting as a Relay Station for fax transmissions from the network. This means that a Relay Report can also be printed for confirmation of sent network faxes. (For US / Canada only)

Its primary function is to print reports of any relayed broadcasts that have been sent through the machine. Please note: in order to use this function, you must assign the relay domain in the "Trusted Domains" section of the Relay function settings.

- 1** Press **Menu**, **6**, **3**, **4**, **3**.
- 2** Press **▲** or **▼** to select **On** or **Off**.
- 3** Press **OK**.
- 4** Press **Stop/Exit**.

Scan to E-mail (E-mail server) (MFC-8860DN only)

Colour File Type for Scan to E-mail (E-mail server)

You can select the default colour file type for the Scan to E-mail (E-mail server) function.

- 1** Press **Menu**, **6**, **4**, **1**.
- 2** Press **▲** or **▼** to select **PDF** or **JPEG**.
- 3** Press **OK**.
- 4** Press **Stop/Exit**.

Black and White File Type for Scan to E-mail (E-mail server)

You can select the default Black and White file type for the Scan to E-mail (E-mail server) function.

- 1** Press **Menu**, **6**, **4**, **2**.
- 2** Press **▲** or **▼** to select **PDF** or **TIFF**.
- 3** Press **OK**.
- 4** Press **Stop/Exit**.

**Note**

For how to operate Scan to E-mail (E-mail server), see Network Scanning of the Software User's Guide on the CD-ROM.

Scan to FTP

Colour File Type for Scan to FTP

You can select the default colour file type for the Scan to FTP function.

- 1** (For MFC-8460N) Press **Menu, 6, 3, 1.**
(For MFC-8860DN) Press **Menu, 6, 5, 1.**
(For DCP-8065DN) Press **Menu, 4, 3, 1.**
- 2** Press **▲** or **▼** to select **PDF** or **JPEG**.
- 3** Press **OK**.
- 4** Press **Stop/Exit**.

Black and White File Type for Scan to FTP

You can select the default Black and White file type for the Scan to FTP function.

- 1** (For MFC-8460N) Press **Menu, 6, 3, 2.**
(For MFC-8860DN) Press **Menu, 6, 5, 2.**
(For DCP-8065DN) Press **Menu, 4, 3, 2.**
- 2** Press **▲** or **▼** to select **PDF** or **TIFF**.
- 3** Press **OK**.
- 4** Press **Stop/Exit**.

**Note**

For how to operate Scan to FTP, see Network Scanning of the Software User's Guide on the CD-ROM.

Fax to Server (MFC-8860DN only)

The Fax to Server feature allows the machine to scan a document and send it over the network to a separate fax server. The document will then be sent from the server as fax data to the destination fax number over standard phone lines. When the Fax to Server feature is set to ON all automatic fax transmissions from the machine will be sent to the fax server for fax transmission. You can continue to send a fax directly from the machine using the manual fax feature (For more information, see sending a fax manually in the User's Guide).

To send a document to the fax server the correct syntax for that server must be used. The destination fax number must be sent with a prefix and a suffix that match the parameters used by the fax server. In most cases the syntax for the prefix is "fax=" and the syntax for the suffix would be the domain name of the fax server E-mail gateway. The suffix must also include the "@" symbol at the beginning of the suffix. The prefix and the suffix information must be stored in the machine before you can use the fax to server function. Destination fax numbers can be saved in the One-Touch or Speed Dial locations or entered using the dial pad (up to 20 digit numbers). For example if you wanted to send a document to a destination fax number of 123-555-0001 the following syntax would be used.

Prefix

Suffix

fax=123-555-0001@faxserver.companyname.com

Destination fax number

Setting Fax to Server to On

You can store the prefix/suffix address for the fax server in the machine.

- 1** Press **Menu**, **6**, **6**.
- 2** Press **▲** or **▼** to select **On** and then press **OK**.
- 3** Press **▲** or **▼** to select **Prefix** and then press **OK**.
- 4** Enter the prefix using dial pad.
- 5** Press **OK**.
- 6** Press **▲** or **▼** to select **Suffix** and then press **OK**.
- 7** Enter the suffix using dial pad.
- 8** Press **OK**.
- 9** Press **Stop/Exit**.



Note

You can enter the prefix and suffix address using up to a total of 40 characters.

How to Operate

- 1** Place the document in the ADF or on the scanner glass.
- 2** Enter the fax number.
- 3** The machine will send the message over a TCP/IP network to the fax server.

Time Zone (MFC-8860DN only)

This field displays your country time zone. The time shown is the time difference between your country and Greenwich Mean Time. For example, the Time Zone for Eastern Time in the USA and Canada is UTC-05:00.

- 1 Press **Menu**, **6**, **7**.
- 2 Press **▲** or **▼** to select the time.
- 3 Press **OK** to accept the selection.
- 4 Press **Stop/Exit** to exit the configuration menu.

Windows® Time Zone Setting

You can see the time difference for your country by using the Time Zone setting in Windows®.

- 1 Click on **Start**.
- 2 Select **Settings** / **Control Panel**.
- 3 Double click on **Date/Time**.
- 4 Select **Time Zone**. Change the date and time. Verify your time zone setting from the pull-down menu (this menu displays the time difference from GMT).

Restoring the network settings to factory default

If you wish to reset the print server back to its default factory settings (resetting all information such as the password and IP address information), please follow these steps:

- 1 Make sure the machine is not operating, then disconnect all the cables from the machine (except power cable).
- 2 (For MFC-8460N and MFC-8860DN) Press **Menu**, **6**, **0**.
(For DCP-8065DN) Press **Menu**, **4**, **0**.
- 3 Press **1** to select **Reset**.
- 4 Press **1** to select **Yes**.
- 5 The machine will re-start, re-connect cables once this is complete.

**Note**

You can reset the print server back to its default factory settings using the BRAdmin Professional utility for Windows®, BRAdmin Light utility for Macintosh® or a web browser. For more information, see *Using the BRAdmin Professional utility and the TCP/IP protocol to configure your network printer (for Windows® only)* on page 9 for Windows® and *Using the BRAdmin Light utility to change the print server settings (for Mac OS® X 10.2.4 or greater)* on page 48 for Macintosh®.

Printing the Network Configuration List

**Note**

Node Name: Node Name appears in the Network Configuration List. The default Node Name is "BRN_XXXXXX" ("XXXXXX" is the last six digits of Ethernet address.).

The Network Configuration List prints a report listing all the current network configuration including the network print server settings.

1 (For MFC-8460N and MFC-8860DN) Press **Menu**, **5**, **6**.

(For DCP-8065DN) Press **Menu**, **1**, **8**.

2 Press **Start**.

Network printing from Windows® basic TCP/IP Peer-to-Peer printing

Overview

If you are a Windows® user and want to print using the TCP/IP protocol in a Peer-to-Peer environment, please follow the instructions in this chapter. This chapter explains how to install the network software and the printer driver which you will need to be able to print using your network printer.



Note

- You must configure the IP address on your machine before you proceed with this chapter. If you have not configured the IP address, see *Configuring your network printer* on page 7 first.
- Verify the host computer and print server are either on the same subnet, or that the router is properly configured to pass data between the two devices.
- The default password for Brother print servers is “**access**”.
- Before installation, if you are using Personal Firewall software (e.g. the Internet Connection Firewall available in Windows XP), disable it. Once you are sure that you can print, re-start your Personal Firewall software.
- If you are connecting to a Network Print Queue or Share (printing only), see *Installation when using a Network Print Queue or Share (printer driver only)* on page 74 for installation details.

For Windows® 98/Me/NT®/2000/XP users

Windows® 98/Me/NT®/2000/XP users can send print job using Brother Peer-to-Peer Print software provided on the CD-ROM which we have supplied with the machine. Windows® 2000/XP users can also print via Internet using the IPP protocol. For more information, see *Internet printing for Windows®* on page 35.

If you have already installed the printer driver, jump to *Printer driver already installed* on page 33.

Configuring the standard TCP/IP port

Printer driver not yet installed

- 1 Start the CD-ROM installation menu program according to the Quick Setup Guide.
- 2 Select the model name and your language (if necessary), and then click **Install Optional Applications**.
- 3 Click **Printer Driver (Only)**.
- 4 Click **Next** in response to the Welcome message. Follow the on-screen instructions.
- 5 Select **Standard Installation** and click **Next**.

- 6 Select **Brother Peer-to-Peer Network Printer**, and then click **Next**.
- 7 Follow the on-screen instruction, and then click **OK**.



Note

Contact your administrator if you are not sure about the location and name of the printer in the network.

- 8 Click **Finish**.

Printer driver already installed

If you have already installed the printer driver and wish to configure it for network printing, follow these steps:

- 1 Select the printer driver you wish to configure.
- 2 Select **File** and then **Properties**.
- 3 Click the **Ports** tab of the driver and click **Add Port**.
- 4 Select the port that you wish to use. Typically this would be **Standard TCP/IP Port**. Then click the **New Port...** button.
- 5 The **Standard TCP/IP Port Wizard** will start.
- 6 Close **Add Port** and **Properties** dialog box.

For Windows NT[®] 4.0 users

Installing the TCP/IP protocol

If you did not install the TCP/IP protocol during the installation of your Windows NT[®]4.0 system (either workstation or server) follow these steps.

- 1 Go to the **Start** button, select **Settings**, and then **Control Panel**.
- 2 Run the **Network** applet by double clicking the **Network** icon and then click the **Protocols** tab.
- 3 Select **Add**, and double click **TCP/IP Protocol**.
- 4 Insert the requested disk(s), or CD-ROM, to copy the required files.
- 5 Click **Close**. The Windows NT[®]4.0 system will review protocol bindings and then you will see the **TCP/IP Properties** dialog.
- 6 Configure the host IP address, subnet mask, and gateway address in that dialog. Consult your system

- 6 Configure the host IP address, subnet mask, and gateway address in that dialog. Consult your system manager for these addresses.
- 7 Click **OK** to exit (your Windows NT[®]4.0 workstation or server will need to be re-booted).

Other sources of information

See *Configuring your network printer* on page 7 to learn how to configure the IP address of the printer.

Overview

Brother's Brother Internet Print (BIP) software, for Windows® 98/Me and Windows NT® 4.0, allows a PC user at one location to send a print job to a Brother machine at a remote location via the Internet. For example, a user on a PC in New York could print a document directly from their Microsoft Excel application program to a printer in Paris.

Windows® 2000/XP users can also use this BIP software, but are recommended to use the IPP protocol support that is part of the Windows® 2000/XP operating systems. Skip to the "Windows® 2000 IPP Printing" section of this document.

Quick Tips

- 1 Windows® 2000/XP users can print using TCP/IP using the standard Network Printing software and IPP protocol software built into any Windows® 2000/XP installation.
- 2 Windows® 98/Me users can send print jobs using the IPP protocol via a Windows® 2000 computer, provided that the Microsoft Internet Print Services software is installed on the client PC, Internet Information Server (IIS) is installed and running on the server and that the client PC is using version 4 or later of Microsoft Internet Explorer.

Brother Internet Print General Information

The BIP software is installed using a standard Windows® 98/Me/2000/XP and Windows NT® 4.0 Installation Wizard. It creates a virtual port on the Windows® 98/Me/2000/XP and Windows NT® 4.0 PC that operates in a similar way to the standard LPT1 printer port from the application program point of view. The user can use the Windows® 98/Me/2000/XP and Windows NT® 4.0 Print Manager to create a printer that uses this port along with a standard Windows® 98/Me/2000/XP and Windows NT® 4.0-compatible printer. Any Windows® 98/Me/2000/XP and Windows NT® 4.0 applications program can therefore print to this printer (and hence to the virtual port) without modification or operational procedure.

When a job is printed to the BIP virtual port, it is actually MIME-encoded (converted to a standard Internet E-mail message) and sent out to a Brother print server at the remote location. This means that BIP is compatible with most common E-mail software packages. The only requirement is that the E-mail server be capable of sending E-mail message over the Internet.

In more detail, the procedure works in the following way:

- If you are connected to a Local Area Network, the E-mail message is passed to the E-mail server, which in turn transmits the message out over the Internet using the SMTP protocol (Simple Mail Transport Protocol) to the remote print server.
- If you are connecting via a modem directly to an Internet Service Provider (ISP), the ISP handles the routing of the E-mail to the remote print server.
- At the remote site, an E-mail server receives the E-mail message. The remote Print/Fax server, which has

its own E-mail address, uses the POP3 protocol (Post Office Protocol 3) to download the E-mail message from the E-mail server. It then decodes the attachment and prints it out on the printer.



Note

If an E-mail is received that has not been configured to use the BIP virtual port driver, the printer will print the E-mail out as a text document.

Brother Internet Print: Configuring the Brother Print Server

The print server can be configured using the BRAdmin Professional utility, Web BRAdmin software or by using a web browser.

Print Server Configuration Checklist



Note

Before configuring the print server to receive BIP jobs, be sure that the E-mail server at the remote site (the receiving end) is configured to handle the TCP/IP POP3, and SMTP protocols (SMTP is only required if the notification feature is enabled).

- 1 Configure the POP3 server on the E-mail server at the remote site with a mail account (Mailbox name) and password for the Brother print server (generally, the mail account name will be the first part of the Email address; for example, if you assign the E-mail address emailprinter@xyz.com, then the mail account name would be emailprinter).
- 2 Make sure that the print server is installed and running with TCP/IP enabled and has a valid IP address assigned to it.

Because access to the E-mail server on most networks is usually restricted, you may need to have your Network Administrator check the configuration and add the mail account.

Brother Internet Print: Using the BRAdmin Professional utility to Configure the Print Server



Note

Skip this section if you wish to use the Web Browser to configure the print server.

Using the BRAdmin Professional utility, you can configure the Brother print server using the TCP/IP protocol.

The steps required to configure the print server to receive print jobs from a Windows® 98/Me/2000/XP and Windows NT® 4.0 PC running the BIP software are as follows.

- 1 Start the BRAdmin Professional utility.
- 2 Select the **Node Name** of the desired Brother print server from the list and double click on it. (the default node name is usually BRN_XXXXXX, where XXXXXX is the last six digits of the Ethernet address (MAC address)). You will be prompted for a password; the default password is “**access**”.



Note

You can find the node name and MAC address by printing out the machine configuration page. For information on how to print the configuration page on your print server, see *Printing the Network Configuration List* on page 31.

- 3 Click on the **POP3/SMTP** tab.
- 4 Enter the address of the POP3 server (consult your Network Administrator if you do not know this address).
- 5 Enter the **POP3 Account Name** for the remote Brother print server. Usually this will be the first part of the E-mail address (for example, if the E-mail address of the print server is emailprinter@xyz.com, then the **POP3 Account Name** would be emailprinter).
- 6 Enter the password for the mailbox, if any.
- 7 The print server is configured by default to poll the POP3 server every 10 minutes. You may change this value, if desired.
- 8 If you have enabled notification, enter the address of your SMTP server (consult your Network Administrator if you do not know this address).
- 9 Press the **OK** button and save the changes. Now exit the BRAdmin Professional utility. You have now configured the print server to receive print jobs.

Brother Internet Print: Using a Web Browser to Configure the Print Server

- 1 Connect to the printer server IP address using your web browser.
- 2 When you reach the **Network Configuration** screen, you will be prompted for a User name and a password. The default settings are User name “**admin**” and the password “**access**”.
- 3 Select the **Configure POP3/SMTP** option. Enter the address of the POP3 server (consult your Network Administrator if you do not know this address). For more information, see *Brother Internet Print: Using the BAdmin Professional utility to Configure the Print Server* on page 37.
- 4 You should see a **Segmented Message Timeout** option. If a print job is separated into multiple E-mail messages using the Partial E-mail Print feature of the BIP, this value indicates how long the print server will wait for all of the segments of the message to arrive.
- 5 Select **Submit** to save the changes. Exit from the web browser. You have now configured the print server to receive print jobs.

Brother Internet Print: Installing the BIP software on Windows® 98/Me/2000/XP and Windows NT® 4.0

To install the BIP software on a Windows® 98/2000/XP and Windows NT® 4.0 PC, execute the following steps:



Note

Be sure that the PC is running an E-mail program (for example, Microsoft Outlook) that is capable of sending E-mail message using Winsock.

Be sure that your E-mail server is capable of sending messages across the Internet.

Setup from CD-ROM

- 1 Start the CD-ROM installation menu program according to the Quick Setup Guide.
- 2 Select the proper model and **Install Optional Applications** menu. Then select **Network Print Software** installation program.
- 3 Click the **Next** button in response to the Welcome message.
- 4 Select the **Brother Internet Print** button.
- 5 Select the desired directory to install the BIP files and then click **Next**. The installation program will create the directory for you if it does not already exist.
- 6 You will then be asked for a port name. Enter the name of the port. The port name must begin with the

BIP and end with a number, for example, BIP1.

7 Press **OK** to continue.

8 You will then be asked to enter the port settings for the remote print server:

Enter any unique legal Internet E-mail address for the remote print server (for example emailprinter@xyz.com). Note that Internet E-mail addresses cannot have spaces in them.

Enter your E-mail address and the IP address of your SMTP E-mail server (consult your Network Administrator if you do not know this address). Also specify if you are going to use the **Partial E-mail Print** option and the **Notification** type.

9 Press **OK** to continue. You will then be asked to re-start your computer.

10 Once your computer has re-started you must create a printer on your Windows® 98/Me/2000/XP and Windows NT® 4.0 system using the standard Windows® 98/Me/2000/XP and Windows NT® 4.0 printer setup procedure. To do this, go the **Start** button, select **Settings** and then **Printers** (Windows® 98/Me/2000 and Windows NT® 4.0). For Windows® XP users, go to the **Start** button, select **Printers and Faxes**.

11 Select **Add Printer** (or **Add a Printer** for Windows® XP) to begin the printer installation.

12 Click **Next** when you get the **Add Printer Wizard** window.

<For Windows® 98/Me users>

13 Select **Local Printer** when you are asked how the printers are connected to your computer and click **Next**.

<For Windows NT® 4.0 users>

13 Select **My Computer**, and then Click **Next**.

<For Windows® 2000/XP users>

13 Select **Local Printer**, and delete the check mark in **Plug and Play** check box. Then click **Next**.

<For Windows® 98/Me users>

14 Select the desired model of the remote printer (for example, Brother HL-series). If necessary, click **Have Disk** to load the driver from the CD-ROM. Click **Next** when you are done.

15 If you have selected a printer driver that is already being used, you have the option of either keeping the existing driver (recommended) or replacing it. Select the desired option and press **Next**.

16 Select the **Brother Internet port (BIP...)** which you created in step 6 and press **Next**.

<For Windows NT® 4.0 and Windows® 2000/XP users>

- 14** Select the **Brother Internet port** (BIP...) which you selected in step 6 and press **Next**.
- 15** Select the desired model of the remote printer (for example, Brother HL-series). If necessary, click **Have Disk** to load the driver from the CD-ROM. Click **Next** when you are done.
- 16** If you have selected a printer driver that is already being used, you have the option of either keeping the existing driver (recommended) or replacing it. Select the desired option and press **Next**.
- 17** Enter any desired name for the BIP remote printer and press **Next**. Note that this name does not need to match the port name that you assigned in step 6, or E-mail address that you assigned in step 9.
- 18** Select **No** when asked if you want to print a test page, unless you have already configured the remote print server to receive BIP print jobs.

You have now finished installing the BIP software. If you need to configure another remote print server, go to the next section, "Adding a Second Brother Internet Port".

Adding a Second Brother Internet Port

You should not re-run the install program to add a new Brother Internet Port. Instead, press the **Start** button, select **Settings**, and open the **Printers** window. Click on the icon of a printer that is using BIP, select **File** from the menu bar, and then choose **Properties**. Click on the **Details** (**Ports** on Windows® 2000/XP and Windows NT® 4.0) tab and click the **Add Port** button.

In the **Add Port** dialog, select the **Other** radio button (Windows® 98/Me only) and then **Brother Internet Port**. Click **OK** (**New Port** on Windows® 2000/XP and Windows NT® 4.0) and it will give you the **Port Name** text box. Any unique name can be given here as long as it starts with "BIP" and another port does not already exist with the same name.

Windows® 2000/XP IPP printing

Use the following instructions if you wish to use the IPP printing capabilities of Windows® 2000/XP.



Note

- You must configure the IP address on your machine before you proceed with this section. If you have not configured the IP address, see *Configuring your network printer* on page 7 first.
 - Verify the host computer and print server are either on the same subnet, or that the router is properly configured to pass data between the two devices.
 - The default password for Brother print servers is "**access**".
-

- 1** For Windows® 2000: Go to the **Start** button, select **Settings** and then **Printers**.
For Windows® XP: Go to the **Start** button and select **Printers and Faxes**.
- 2** For Windows® 2000: Double click the **Add Printer** icon to get the **Add Printer Wizard**.
For Windows® XP: Double-click **Add a printer** to get the **Add Printer Wizard**.
- 3** Click **Next** when you see the **Welcome to the Add Printer Wizard** screen.
- 4** Select **Local printer** or **Network printer**. For Windows® 2000: Make sure that you select **Network Printer**.
For Windows® XP: Make sure that you select **A network printer, or a printer attached to another computer**.
- 5** Click **Next**.
- 6** For Windows® 2000: Select **Connect to a printer on the Internet or on your intranet** and then enter the following in the URL field: `http://printer_ipaddress:631/ipp` (Where `printer_ipaddress` is the IP address or the print server name).

For Windows® XP: Select **Connect to a printer on the Internet or on a home or office network** and then enter the following in the URL field: `http://printer_ipaddress:631/ipp` (Where `printer_ipaddress` is the IP address or the print server name).

**Note**

If you have edited the hosts file on your computer or are using Domain Name System (DNS), you can also enter the DNS name of the print server. As the print server supports TCP/IP and NetBIOS names, you can also enter the NetBIOS name of the print server. The NetBIOS name can be seen in the Network Configuration List. The NetBIOS name assigned is the first 15 characters of the node name and by default it will appear as BRN_##### where ##### is the last six digits of the Ethernet address.

5

- 7** When you click **Next**, Windows® 2000/XP will make a connection with the URL that you specified.

If the printer driver has already been installed:

If the appropriate printer driver is already installed on your PC, Windows® 2000/XP will automatically use that driver for use. In this case, you will simply be asked if you wish to make the driver the default driver, after which the Driver installation Wizard will complete. You are now ready to print.

If the printer driver has NOT been installed:

One of the benefits of the IPP printing protocol is that it establishes the model name of the printer when you communicate with it. After successful communication you will see the model name of the printer automatically. This means that you do not need to inform Windows® 2000 the type of printer driver to be used.

- 8** Click **OK**. You will then see the printer selection screen in the **Add Printer Wizard**.
- 9** If your printer is not in the list of supported printers, click **Have Disk**. You will then be asked to insert the driver disk.
- 10** Click **Browse** and select the CD-ROM or network share that contains the appropriate Brother printer driver.
- 11** Now specify the model name of the printer.
- 12** If the printer driver that you are installing does not have a Digital Signature you will see a warning message. Click **Yes** to continue with the installation. The **Add Printer Wizard** will then complete.
- 13** Click the **Finish** button and the printer is now configured and ready to print. To test the printer connection, print a test page.

Specifying a different URL

Please note that there are several possible entries that you can enter for the URL field.

`http://ipaddress:631/ipp`

This is the default URL and we recommend that you use this URL. Please note the **Get More Info** option will not display any printer data.

`http://ipaddress:631/ipp/port1`

This is for HP® Jetdirect® compatibility. Please note the **Get More Info** option will not display any printer data.

`http://ipaddress:631/`

If you forget the URL details, you can simply enter the above text and the printer will still receive and process data. please note the **Get More Info** option will not display any printer data.

If you are using the built in service names that the Brother print server supports, you can also use the following: (However, please note the **Get More Info** option will not display any printer data).

`http://ipaddress:631/brn_XXXXXX_p1`

`http://ipaddress:631/binary_p1`

`http://ipaddress:631/text_p1`

`http://ipaddress:631/pcl_p1`

`http://ipaddress:631/postscript_p1`

`http://ipaddress:631/brn_XXXXXX_p1_at`

Where ipaddress is the IP address or the print server name.

Other sources of information

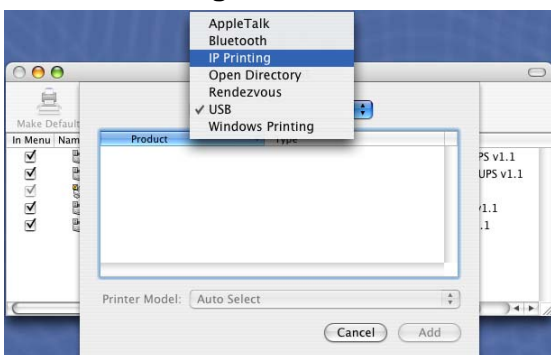
See *Configuring your network printer* on page 7 to learn how to configure the IP address of the printer.

Overview

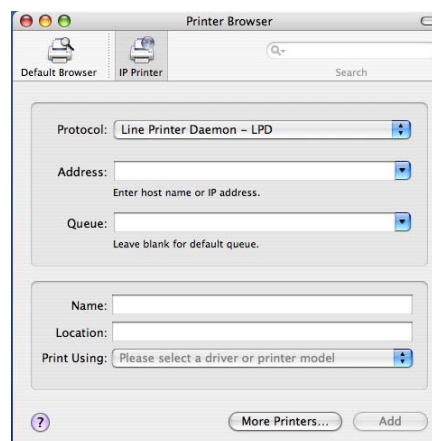
This chapter explains how to configure the BR-Script 3 (PostScript® 3™ language emulation) printer driver on a Network. For more information on how to configure the Brother Driver on a Network, see the Quick Setup Guide included with the machine.

How to select the print server (TCP/IP) (Mac OS® X 10.2.4 or greater)

- 1 Switch the machine ON.
- 2 Open the **Applications** folder.
- 3 Open the **Utilities** folder.
- 4 Open the **Printer Setup Utility** Icon. (Mac OS® X 10.2.x users, open the **Print Center** icon.)
- 5 Click **Add**.
- 6 Select **IP Printing**.

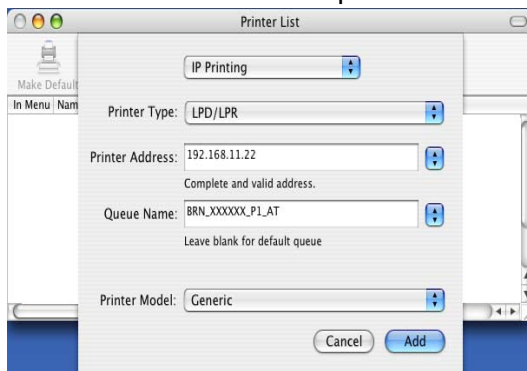


(Mac OS®X 10.2.4 - 10.3.x)

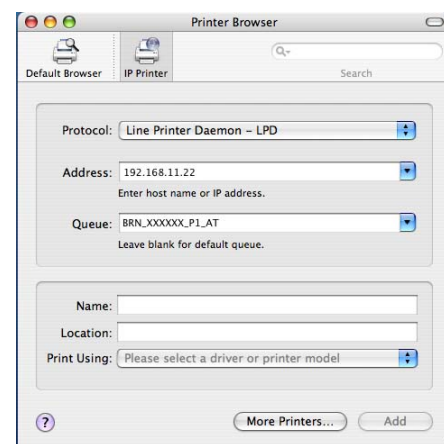


(Mac OS®X 10.4)

7 Enter the IP address of the printer into the **Printer Address** box.



(Mac OS®X 10.2.4 - 10.3.x)

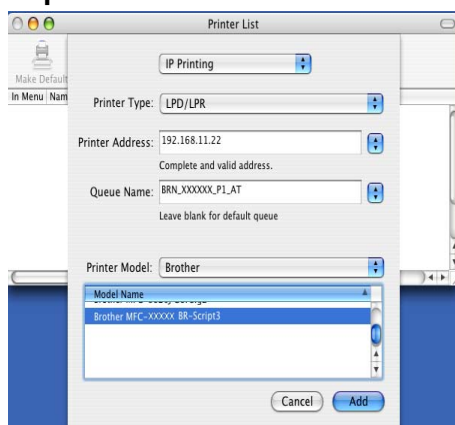


(Mac OS®X 10.4)

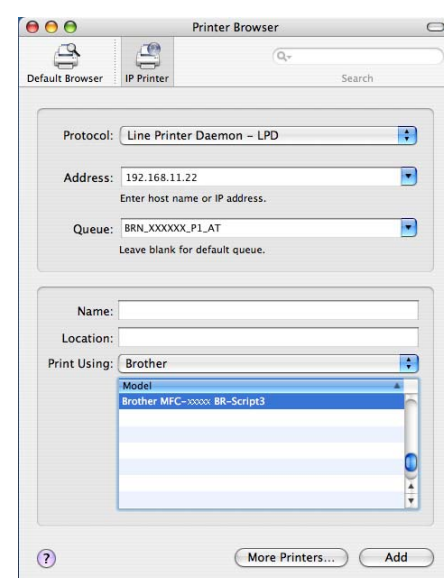
The Network Configuration List will allow you to confirm the IP address. For information on how to print the configuration page, See *Printing the Network Configuration List* on page 31.

8 When specifying the **Queue Name**, use the value `brn_XXXXXX_p1_at` where `XXXXXX` are the last 6 digits of the Ethernet address.

9 From the **Printer Model** pull-down list select your model. For example, select **Brother MFC-XXXXX BR-Script3**.



(Mac OS®X 10.2.4 - 10.3.x)

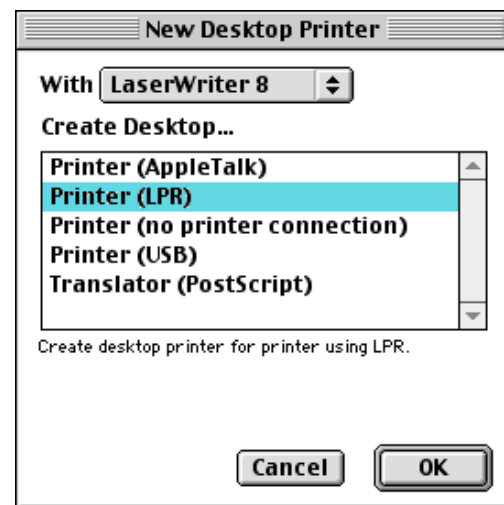


(Mac OS®X 10.4)

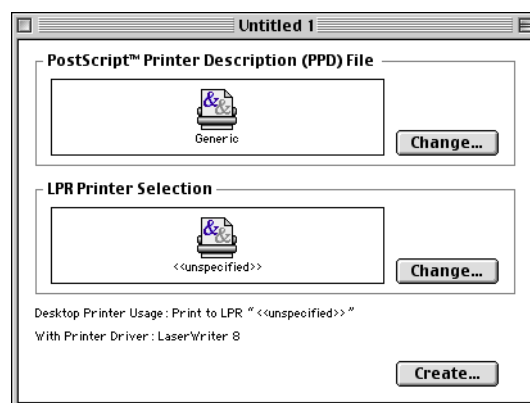
10 Click **Add** and the printer will be available from the **Printer List**.

How to select the print server (TCP/IP) (Mac OS® 9.1 - 9.2)

- 1 Open the **Applications (Mac OS® 9)** folder.
- 2 Open the **Utilities** folder.
- 3 Open the **Desktop Printer Utility** icon.
- 4 Select the **Printer (LPR)** option and click **OK**.



- 5 At this point we must select the correct PPD file for the machine and also configure the correct LPR information. Click **Change** in the **PostScript Printer Description (PPD) File** section and select the appropriate PPD file for your model.



- 6 Now select the **Change** button below the **LPR Printer Selection** text.

- 7 Enter the IP address and service name details of the machine. When specifying the **Queue**, use the value `brn_XXXXXX_P1_at` where `XXXXXX` are the last 6 digits of the Ethernet address.

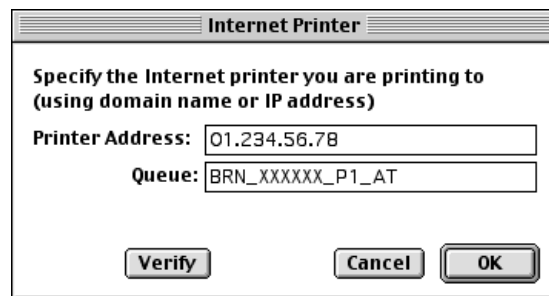


Note

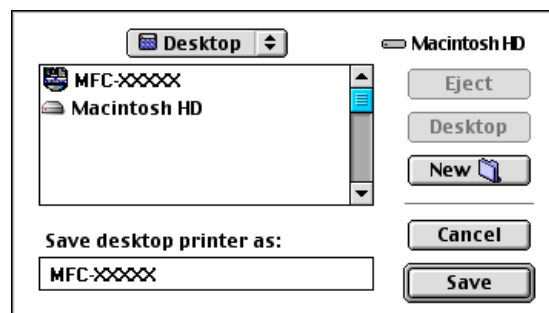
If you do not specify the correct value the machine may not print, or it may not print the data correctly. Please ensure that the value you enter here matches with the Service name of the machine.

- 8 Click **OK** to go back to the previous screen.
- 9 You are now ready to create the printer for use. To do that, click **Create** and you will see the following:
- 10 Enter the name of the printer in the **Save desktop printer As:** option and click **Save**.
- 11 You can make this the default printer by clicking the printer name once and then select **Printing** and **Set Default Printer**.

Whenever you send a print job, the printer that you just created will be used.



6



Changing the print server settings

Changing the configuration using a web browser

Simply connect to the printer using the format: `http://ipaddress` where `ipaddress` is the address of the printer.

See *Using a HTTP (web browser) to change the print/scan settings* on page 11.

Changing the configuration using the Remote Setup

From a Macintosh®, it is also possible to change the printer or print server parameters using the Remote Setup application.

See *Using the Remote Setup to change the print server settings (for Windows® and Mac OS® X 10.2.4 or greater) (Not available for DCP-8065DN)* on page 11.

Using the BRAdmin Light utility to change the print server settings (for Mac OS® X 10.2.4 or greater)

Brother BRAdmin Light utility is a Java application that is designed for Mac OS X 10.2.4 or greater environment. BRAdmin Light allows you to change network settings on Brother network ready machine.



Note

- Please use the BRAdmin Light utility version that was supplied on the CD-ROM with your Brother product. You can also download the latest Brother BRAdmin Light utility version from <http://solutions.brother.com>. This utility is only available for Macintosh® users.
- Node name: Node name appears in current BRAdmin Light. The default Node name is "BRN_XXXXXX" ("XXXXXX" is the last six digits of Ethernet address.).
- The default password for Brother print servers is "**access**".

- 1** Start the BRAdmin Light utility (from Mac OS® X 10.2.4 or greater), by double clicking the **Macintosh HD** icon on your desk top and clicking **Library / Printers / Brother / Utilities**. And then, double click the **BRAdminLight.jar** file.
- 2** Select the print server which you want to change the settings.
- 3** Select **Configure Print Server** from the **Control** menu.
- 4** Enter a password. The default Password is "**access**". You can now change the print server settings.

Other sources of information

- 1 Visit <http://solutions.brother.com> for more information on network printing.
- 2 See *Configuring your network printer* on page 7 to learn how to configure the IP address of the printer.

Overview

A standard Web Browser (we recommend Microsoft Internet Explorer® version 6.0 or later, or Netscape Navigator® version 7.1 or later) can be used to manage your machine using the HTTP (Hyper Text Transfer Protocol). You can get the following information from a machine on your network using a web browser:

- Printer status information.
- Change Fax configuration items, such as General Setup. Quick-Dial settings and Remote Fax.
- You can also change network settings such as TCP/IP information.
- Configure Scan to FTP and LDAP search functions.
- Software version information of the machine and print server.
- Change network and machine configuration details.

You must use the TCP/IP protocol on your network and have a valid IP address programmed into the print server and your computer.

- 1 To learn how to configure the IP address on your machine, see *Configuring your network printer* on page 7.
- 2 The default password for Brother print servers is “**access**”.
- 3 You can use a web browser on most computing platforms, for example, Macintosh® and UNIX® users are also able to connect to the machine and manage it.
- 4 You can also use the BRAdmin Professional or the BRAdmin Light utilities to manage the printer and its network configuration.

How to connect to your machine using a Browser

Type `http://printer's IP Address /` into your browser (you can also use the NetBIOS name of the print server, if you are in a Microsoft Windows domain/Workgroup environment). Enter the DNS name of the machine if connecting to a network that uses the DNS protocol.

For Macintosh® users, you can have easy access to Web Based Management System by clicking the machine icon on **Status Monitor** screen. For more information, see Chapter 7 Status Monitor of the Software User's Guide on the CD-ROM.

Password Information

Web Based Management offers two levels of password access. Users are able to access to the General Setup, Fax settings and Lists and Reports. The default user name for Users is **"user"** (case sensitive) and the default password is **"access"**.

Administrators are able to access all settings. The login name for the Administrator is **"admin"** (case sensitive) and the default password is **"access"**.

Changing the Scan to FTP configuration using a Browser

You can configure and change following Scan to FTP settings using a web browser.

- **Profile name** (Up to 15 characters)
- **Host Address** (FTP server address)
- **Username**
- **Password**
- **Store Directory**
- **Quality**
- **File Type** (PDF/JPEG/TIFF)
- **Passive mode** (On/Off)
- **Port Number**



Note

The details required to use Scan to FTP can be either be entered manually at the control panel or by using a web browser to pre-configure and store the details in a FTP Profile. For more information see Network Scanning in the Software Users Guide.

Changing the LDAP configuration using a Browser (MFC-8860DN only)

You can configure and change LDAP settings using a web browser.

- **LDAP Enable/Disable**
- **LDAP Server Address**
- **Port** (The default port number is 389.)
- **Authentication**
- **Username**
- **Password**
- **Search Root**
- **Attribute of Name (Search Key)**
- **Attribute of E-mail**
- **Attribute of Fax Number**

For more information on LDAP operation, see *LDAP Operation (MFC-8860DN only)* on page 53.

Overview

LDAP operation allows you to search for information such as fax numbers and E-mail addresses from your server. You can configure LDAP settings using a web browser.

Changing the LDAP configuration using a Browser

You can configure and change LDAP settings using a web browser. For more information, see *Changing the LDAP configuration using a Browser (MFC-8860DN only)* on page 52.

LDAP operation using the control panel

- 1 Press **Search**.
- 2 Press ▲ or ▼ to select `Server & Local`.
- 3 Press **OK**.
- 4 Enter initial characters for your search by using the Dial Pad.



Note

- You can enter up to 15 characters.
- For more information on using the Dial Pad, see *Entering Text* on page 78.

- 5 Press **Search** or **OK**.

The LDAP search result will be shown on LCD before the local address book search result with ►. If there is no match on the server and the local address book, the LCD will show `Not Found` for 2 seconds.

- 6 Press ▲ or ▼ to select.

To confirm details of the result information, highlight the result and press ►.

- 7 Press **OK**.

If the result includes both a fax number and an E-mail address, the machine will prompt you to press ▲ or ▼ to select and press **OK**.

- 8 Load your document and press **Start**.

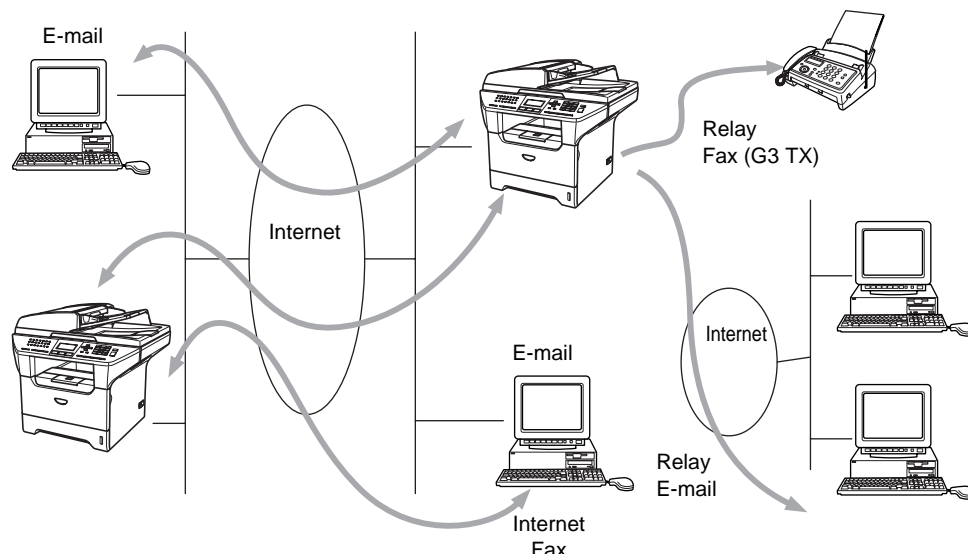


Note

- The LDAP function of this machine supports LDAPv3.
 - You need to use Simple Authentication to communicate with your LDAP server.
 - SSL/TLS is not supported.
 - For more information, please visit <http://solutions.brother.com>.
-

Overview

Internet Faxing (I-Fax) allows you to send and receive FAX documents using the Internet as the transport mechanism. Documents are transmitted in E-mail messages as attached TIFF-F files. This means that PC's are also able to receive and send documents, providing that the PC has as an application that can generate and view TIFF-F files, you can use Microsoft® Imaging or a TIFF-F viewer application. Any documents sent via the machine will automatically be converted into a TIFF-F format. If you wish to send and receive messages to and from your machine, your mail application on the PC must be able to support the MIME format.



Note

I-Fax is available in Black & White only.

Getting Connected

Before sending or receiving an Internet Fax you must configure your Brother machine to communicate with your network and mail server. You must ensure the following: a correctly configured IP address for your machine, an E-mail address for your machine, the mail server(s) IP address, mailbox name and password for your Brother machine. If you are unsure of any of these items, please contact your systems Administrator. For details of how to configure this information, see *Web Based Management* on page 50.

Control Panel Key Functions

Shift + 1

Used to change input mode. You can use Dial Pad keys as Standard alphabet character keys.

Dial Pad

Used to enter Standard Alpha characters (26 letters), as well as @. space ! " # % & ' () + / : ; < > = ? [] ^ - \$, * _ and Numbers.

◀ or ▶

Moves the LCD cursor to the left or right when you enter text.

OK

Used to store multiple numbers.

Start

Begins transmitting the document.

Stop/Exit

Deletes entered data and stops the scanning or transmitting process.

One Touch / Search / Speed-Dial

These functions work the same way as with conventional machine's.

However, please note that you cannot use chain dialling for E-mail addresses.

Shift + Start

Used to receive E-mail from the POP3 server manually.

Sending an Internet Fax

Sending an Internet Fax is the same as sending a normal Fax. If you have already programmed the addresses of the destination Internet Fax machines as One Touch or Speed-Dial locations, you can send the Internet Fax by loading the document into the machine, use the Fax Resolution key to set the preferred resolution and select a Speed-Dial number and pressing **Start**.

If you wish to manually enter the Internet Fax Address load the document into the machine and press **Shift** and **1** simultaneously to change into the "alphabet" dialling mode.

To manually enter the Internet Fax address, see *Entering Text* on page 78.

Manually Entering Text

Press **Shift** and **1** simultaneously to change into the “alphabet” dialling mode.

You can use the Dial Pad to dial the E-mail address. For more information, see *Entering Text* on page 78.

Please note that also you can connect to the machine using a web browser and specify the E-mail address information through Web Based Management. See *Web Based Management* on page 50 for more information.

As you enter the Internet Fax address, the address will appear character by character on the LCD panel. If you specify more than 22 characters, the LCD panel will scroll the name to the left character by character. You can enter up to 60 characters.

1 Press **Start** to send the document.

After the document is scanned, it is transmitted to the Recipient Internet Fax Machine automatically via your SMTP server. You can cancel the send operation by pressing the **Stop/Exit** button during scanning. After the transmission is finished, the machine will return to standby mode.

Some E-mail servers do not allow you to send large E-mail documents (the System Administrator will often place a limit on the maximum E-mail size). You can enable the Limit Size of the Sent Mail feature. The machine will display `Out of Memory` when trying to send E-mail documents over 1Mbyte in size. The document will not be sent and an error report will be printed. The document you are sending should be separated into smaller documents that will be accepted by the mail server. You can enable this feature through the Web Management utility or the LAN function mode.

Receiving E-mail or Internet Fax

There are 2 ways you can receive E-mail messages:

- POP3 receiving at regular intervals
- POP3 receiving (manually initiated)

Using POP3 receiving the machine must poll the E-mail server to receive the print jobs. This polling can occur at set intervals (for example, you can configure the machine to poll the E-mail server at 10 minute intervals) or you can manually poll the server by pressing the **Shift + Start** button.

If your machine starts to receive E-mail print jobs, the LCD panel will reflect this activity. For example, you will see `Receiving` on the LCD panel followed by “xx E-mail(S)”. If you press the **Shift + Start** buttons to manually poll the E-mail server for E-mail print jobs and there are no mail documents waiting to be printed, the machine will display `No Mail` on the LCD panel for two seconds.

If your machine is out of paper when receiving data, the received data will be held in the machine's memory. This data will be printed automatically after paper is re-inserted into the machine. (For European, Asian and Oceanian machines, Memory receive must be switched “ON”.)

If the received mail is not in a plain text format or an attached file is not in the TIFF-F format, the following error message will be printed: **ATTACHED FILE FORMAT NOT SUPPORTED. FILE NAME:XXXXXX.doc**
If the received mail is too large, the following error message will be printed: **E-MAIL FILE TOO LARGE.** If

Delete POP Receive Error Mail is **ON** (default) then error mail is automatically deleted from the E-mail Server.

Receiving an Internet Fax to a PC

When a PC receives an Internet Fax document, the document is attached to a mail message that informs the PC that it has received a document from an Internet Fax. This is notified in the Subject field of the received mail message.

If the PC to which you wish to send a document is not running Windows® 98/98SE/Me/2000/XP or Windows NT® 4.0 operating system, please inform the PC's owner that they must install some software that can view TIFF-F files.

You can use “Microsoft® Imaging” that is supplied with Windows® 98/Me/2000 and Windows NT® 4.0.

Forwarding Received E-mail and Fax Messages

You can forward received E-mail or standard fax messages to another E-mail address or fax machine. Received messages can be forwarded via E-mail to a PC or Internet Fax. They can also be forwarded via standard phone lines to another machine.

The setting can be enabled using the Web browsers or through the machine front panel. The steps for configuring Fax Forward can be found in the User's Guide supplied with your machine.

Please see the User's Guide included with the machine to check that this feature is supported.

Relay Broadcasting

This function allows the Brother machine to receive a document over the Internet, and then relay it to other fax machines through conventional telephone lines.

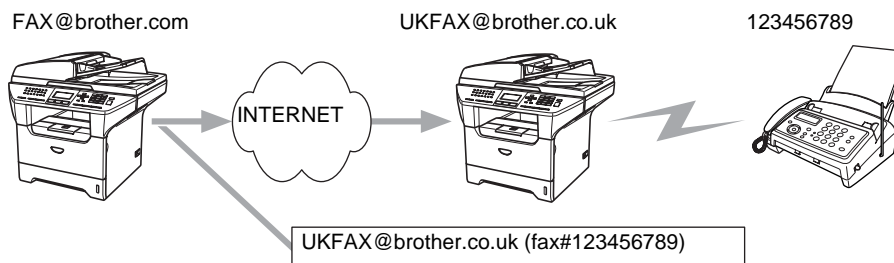
If you wish to use your machine as a relay broadcast device, you must specify the domain name that you trust at the machine, in other words, the portion of the domain after the '@' sign.

A trusted domain refers to the E-mail address. For example, if the other party's address is bob@brother.com, then we identify the domain as brother.com. If the E-mail address is jack@brother.co.uk, then we identify the domain as brother.co.uk.

Use care in selecting a trusted domain since any user on a trusted domain will be able to send a Relay Broadcast. You can register up to 10 domain names.

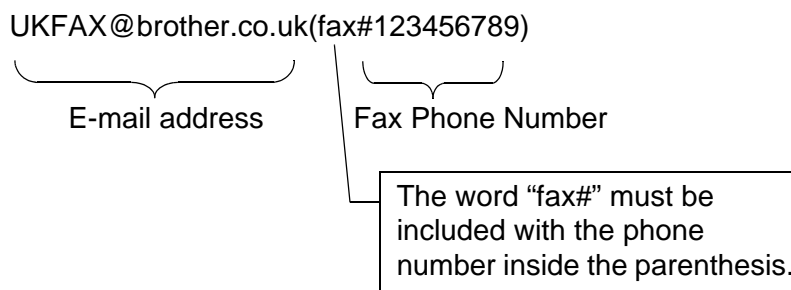
Relay Broadcast can support the relay of a document up to a maximum of 48 fax machines through conventional telephone lines.

Relay Broadcast from a machine



In this example, your machine has an E-mail address of FAX@brother.com, you wish to send a document from this machine to another machine in England with an E-mail address of UKFAX@brother.co.uk, this machine will then forward the document to a standard fax machine using a conventional telephone line. If your E-mail address is FAX@brother.com, you must configure a trusted domain name of brother.com on the machine in England that will broadcast the document to the conventional fax machine. If you do not enter the domain name information, then the machine in the middle (the machine that will broadcast the document) will not trust any internet jobs that it receives from the machine in the @brother.com domain.

After the trusted domain is set you can send the document from your machine [I.E. FAX@brother.com] by entering the E-mail address of the machine [I.E. UKFAX@brother.co.uk] that will forward the document followed by the phone number of the fax that will receive the document. The following is an example of how to enter the E-mail address and phone number.

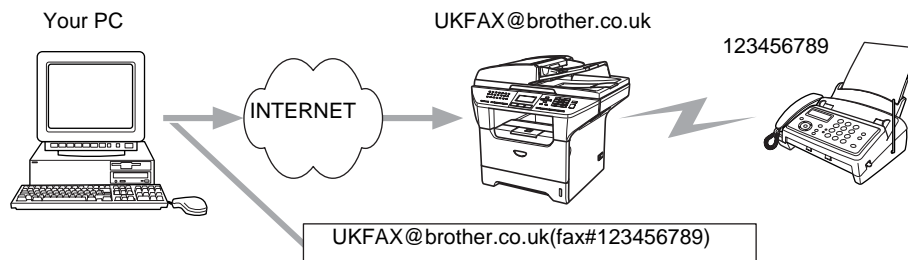


Sending to multiple phone numbers:

If you want to have the document relayed to more than one standard fax machine the address can be entered using the following method:

- 1 Enter the phone number of the first Fax machine UKFAX@brother.co.uk(Fax#123).
- 2 Press **Menu**.
- 3 Enter the phone number of the second Fax machine UKFAX@brother.co.uk(Fax#456).
- 4 Press **Start**.

Relay Broadcast from a PC



You can also send E-mail from your PC and have it relayed to a conventional FAX machine. The method of entering the phone number of the conventional FAX machine that will receive the relayed E-mail will vary depending on the mail application you are using. The following are some examples of different mail applications:

Some E-mail applications do not support sending to multiple phone numbers. If your E-mail application cannot support multiple phone numbers you will only be able to relay to one Fax machine at a time.

Enter the address of the relay machine and phone number of the FAX in the "TO" box using the same method used when sending from an machine.

UKFAX@brother.co.uk(fax#123456789)

Outlook 97/98/2000/2002/2003:

For Outlook 97/98/2000/2002 and 2003 the address information must be entered into the address book as follows:

Name: fax#123456789

E-mail Address: UKFAX@brother.co.uk

TX Verification Mail

Transmission Verification Mail supports two separate functions. Verification Mail for sending allows you request notification from the receiving station that the I-Fax or E-mail was received and processed. Verification Mail for receiving allows you to transmit a default report back to the sending station after successfully receiving and processing an I-Fax or E-mail.

To use this feature you must set the `Notification` option within the `Setup Mail RX` and `Setup Mail TX` options.

Setup Mail (TX)

You can set the **Notification** option in the **Setup Mail TX** option to either **On** or **Off**. When switched to **On** an additional field of information is sent with the image data. This field is named **MDN**.

MDN

Mail Disposition Notification - This field requests the status of the I-Fax / E-mail message after delivery through the SMTP (Send Mail Transfer Protocol) transport system. Once the message has arrived at the Receiving station this data is used when the machine or user reads or prints the received I-Fax or E-mail. For example, if the message is opened for reading or is printed the receiving station sends back a notification to the original sending machine or user.

The receiving station must support the MDN field in order to be able to send a notification report, otherwise the request will be ignored.

Setup Mail (RX)

There are three possible settings for this option **On/MDN/Off**.

Receive Notification "On"

When switched to "**On**" a fixed message is sent back to the sending station to indicate successful reception and processing of the message. These fixed messages depend on the operation requested by the sending station.

Report messages consist of

`SUCCESS : Received From <mail address>`

Receive Notification "MDN"

When switched to "**MDN**" a report as described above is sent back to the sending station if the originating station sent the "**MDN**" field to request confirmation.

Receive Notification "Off"

OFF - Switches all forms of receive notification **Off**, no messages are sent back to the sending station regardless of the request.

Error mail

If there is a mail delivery error while sending an Internet Fax, the mail server will send an error message back to the machine and the error message will be printed. If there is an error while receiving mail, an error message will be printed (Example: "The message being sent to the machine was not in a TIFF-F format.").

Important information on Internet Fax

Internet Fax Communication on a LAN system is basically the same as communication via E-mail; however, it is different from Fax communication using standard phone lines. The following is important information for using Internet Fax:

- Factors such as the receiver's location, structure of the LAN system, and how busy the circuit (such as the internet) is, may cause the system to take a long time to send back an error mail. (normally 20 sec. to 30 sec.).
- In the case of transmission through the Internet, due to its low level of security, we recommend that you use standard phone lines to send confidential documents.
- If the receiver's mail system is not compatible with the MIME format, you cannot transmit a document to the receiver. Depending on receiver's server, there may be some cases in which the error mail will not be sent back.
- If the size of a document's image data is huge, there is a possibility of unsuccessful transmission.
- You cannot change font and character size of Internet mail that you received.

Overview

This chapter describes procedures for troubleshooting problems you may encounter with a Brother print server, it is divided into the following sections:

- General problems
- Network print software installation problems
- Printing problems
- Protocol-specific troubleshooting

General problems

CD-ROM is inserted, but does not start automatically

If your computer does not support Autorun, the menu will not start automatically after inserting the CD-ROM. In this case, execute **setup.exe** in the root directory of the CD-ROM.

How to reset the Brother print server to factory default

You can reset the print server back to its default factory settings (resetting all information such as the password and IP address information). See *Restoring the network settings to factory default* on page 30.

Network print software installation problems

The Brother print server is not found during setup of the network print software installation or from the printer driver of the Brother machine in Windows®.

The Brother print server is not found using the Simple Network Configuration capabilities of Mac OS® X.

Make sure you have completed the IP address setting of the Brother print server according to *Chapter 2* or *Chapter 3* of this User's Guide before installing the network print software or printer driver. Check the following:

- 1** Make sure that the machine is powered on, is on-line and ready to print.

2 Check to see if there is any LED activity. Brother print servers have two LEDs on the back panel of the machine. The upper green LED shows Link/Activity (Received/Transmit) status. The lower orange LED shows Speed status.

- No light: If the upper LED is off, then the print server is not connected to the network.
- The upper LED is green: The Link/Activity LED will be green if the print server is connected to a Ethernet network.
- The lower LED is orange: The Speed LED will be orange if the print server is connected to a 100 BASE TX Fast Ethernet network.
- The lower LED is off: The Speed LED will be off if the print server is connected to a 10BASE T Ethernet network.

3 Print the Network Configuration List and check if the settings such as IP address settings are correct for your network. The problem may be the result of mismatched or duplicate IP address. Verify that the IP address is correctly loaded into the print server. And make sure that no other nodes on the network have this IP address. For information on how to print the Network Configuration List, see *Printing the Network Configuration List* on page 31.

4 Verify that the print server is on your network as follows:

For Windows®

Try pinging the print server from the host operating system command prompt with the command:

```
ping ipaddress
```

Where `ipaddress` is the print server IP address (note that in some instances it can take up to two minutes for the print server to load its IP address after setting the IP address).

For Macintosh®

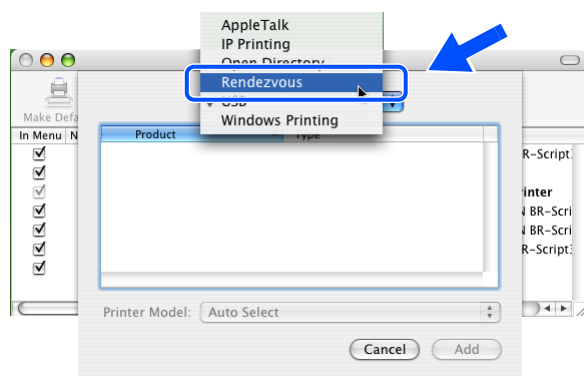
For Mac OS® 9.1 to 9.2

- (1) From the **Apple** menu, open the **Chooser**.
- (2) Click the **Brother (IP)** icon, and make sure that your print server name appears in the right frame. If it is visible, then the connection is good. Otherwise, go to Step 5.

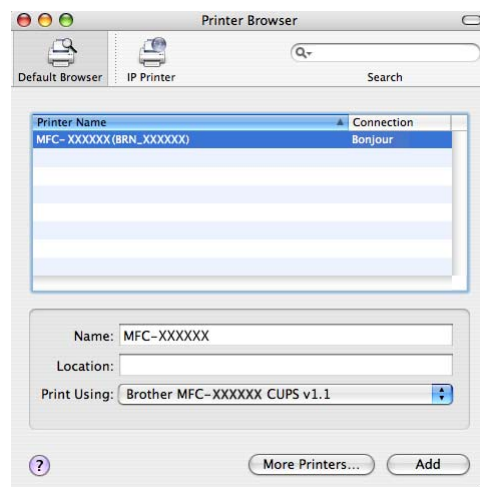
For Mac OS® X 10.2.4 or greater

- (1) From the **Go** menu, select **Applications**.
- (2) Open the **Utilities** folder.
- (3) Double-click the **Printer Setup Utility** icon. (For **Mac OS® X 10.2.x** users, double click the **Print Center** icon)
- (4) Click **Add**.

- (5) Make the following selection. Make sure that your print server appears. If it is visible, then the connection is good. Otherwise, go to Step 5.



(Mac OS®X 10.2.4 - 10.3.x)



(Mac OS®X 10.4)

- 5** If you have tried 1 to 4 above and it does not work, then reset the print server back to the default factory settings and try from the initial setup again. For information how to reset to the default factory settings, see *Restoring the network settings to factory default* on page 30.
- 6** Check if a personal firewall such as ICF (Internet Connecting Firewall) for Windows XP is running on your computer. If it is running, temporarily turn it off and try again.



Note

If none of the above steps are successful, there is almost certainly a hardware or network problem!

Printing problems

Print job is not printed

Make sure the status and configuration of the print server. Check following:

- 1 Make sure that the machine is powered on, is on-line and ready to print. Print the Network Configuration List of the machine and check if the settings such as IP address settings are correct for your network. See *Printing the Network Configuration List* on page 31 for information on how to print the Network Configuration List on your print server.
- 2 The problem may be the result of mismatched or duplicate IP address. Verify that the IP address is correctly loaded into the print server. And make sure that no other nodes on the network have this IP address.
- 3 Verify that the print server is on your network as follows:

For Windows®

- (1) Try pinging the print server from the host operating system command prompt with the command:

```
ping ipaddress
```

Where `ipaddress` is the print server IP address (note that in some instances it can take up to two minutes for the print server to load its IP address after setting the IP address).

- (2) If a successful response is received, then proceed to *Windows® 2000/XP IPP troubleshooting* on page 67. Otherwise, proceed to Step 4.

For Macintosh®

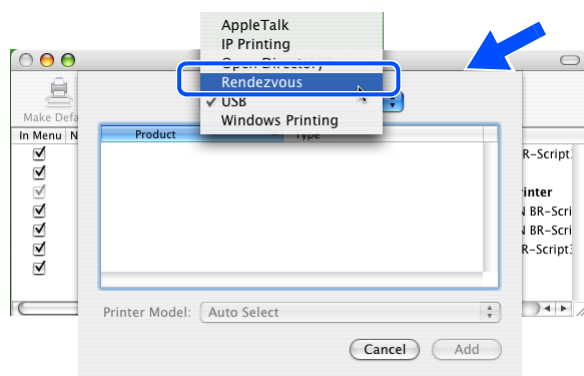
For Mac OS® 9.1 to 9.2

- (1) From the **Apple** menu, open the **Chooser**.
- (2) Click the **Brother (IP)** icon, and make sure that your print server name appears in the right frame. If it is visible, then the connection is good. Otherwise, go to Step 4.

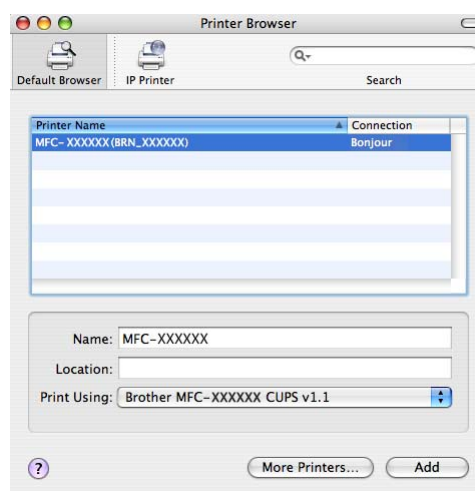
For Mac OS® X 10.2.4 or greater

- (1) From the **Go** menu, select **Applications**.
- (2) Open the **Utilities** folder.
- (3) Double-click the **Printer Setup Utility** icon. (For **Mac OS® X 10.2.x** users, double click the **Print Center** icon)
- (4) Click **Add**.

- (5) Make the following selection. Make sure that your print server appears. If it is visible, then the connection is good.



(Mac OS®X 10.2.4 - 10.3.x)



(Mac OS®X 10.4)

- 4 If you have tried 1 to 4 above and it does not work, then reset the print server back to the default factory settings and try from the initial setup again. For information how to reset to the default factory settings, see *Restoring the network settings to factory default* on page 30

Error during printing

If you try to print while other users are printing large amounts of data (e.g. many pages or colour pages with high resolution), the printer is unable to accept your print job until the ongoing printing is finished. If the waiting time of your print job exceeds a certain limit, a time out situation occurs, which causes the error message. In such situations, execute the print job again after the other jobs are completed.

Protocol-specific troubleshooting

Windows® 2000/XP IPP troubleshooting

Want to use a different Port number other than 631.

If you are using Port 631 for IPP printing, you may find that your firewall may not let the print data through. If this is the case, use a different port number (port 80), or configure your Firewall to allow Port 631 data through. To send a print job using IPP to a printer using Port 80 (the standard HTTP port) enter the following when configuring your Windows® 2000/XP system.

`http://ipaddress/ipp`

Get More Info option in Windows® 2000 not working

If you are using a URL of:

`http://ipaddress:631` or `http://ipaddress:631/ipp`,

the **Get More Info** option in Windows® 2000 will not function. If you wish to use the **Get More Info** option, use the following URL:

`http://ipaddress`

This will then force Windows® 2000/XP to use Port 80 to communicate with the Brother print server.

Web browser troubleshooting (TCP/IP)

- 1 If you can not connect to the print server using your web browser it may be worth checking the Proxy Settings of your browser. Look in the Exceptions setting and if necessary, type in the IP address of the print server. This will stop your PC from trying to connect to your ISP or proxy server every time you wish to look at the printer server.

Make sure that you are using the proper web browser, we recommend Netscape Navigator® version 7.1 or later/ Microsoft Internet Explorer® version 6.0 or later.

LDAP troubleshooting

If you are having trouble connecting to a Windows® LDAP server, please contact your Network Administrator and check the LDAP Security Options.

For more information, please visit <http://solutions.brother.com>.

Using services

A service is a resource that can be accessed by computers that wish to print to the Brother print server. The Brother print server provides the following predefined services (do a `SHOW SERVICE` command in the Brother print server remote console to see a list of available services): Enter `HELP` at the command prompt for a list of supported commands.

Service (Example)	Definition
BINARY_P1	TCP/IP binary, NetBIOS service
TEXT_P1	TCP/IP text service (adds carriage return after each line feed)
PCL_P1	PCL [®] service (switches PCL-compatible printer to PCL [®] mode)
BRN_XXXXXX_P1	TCP/IP binary
BRN_XXXXXX_P1_AT	PostScript service for Macintosh
POSTSCRIPT_P1	PostScript service (switches PCL-compatible printer to PostScript mode)

Where `XXXXXX` is the last six digits of the Ethernet address (for example, `BRN_310107_P1`).

Other ways to set the IP address (for advanced users and Administrators)

For information on how to configure your network printer using the BRAdmin Professional utility or a web browser, see *Setting the IP address and subnet mask* on page 9.

Using DHCP to configure the IP address

The Dynamic Host Configuration Protocol (DHCP) is one of several automated mechanisms for IP address allocation. If you have a DHCP server in your network, the print server will automatically obtain its IP address from DHCP server and register its name with any RFC 1001 and 1002-compliant dynamic name services.



Note

If you do not want your print server configured via DHCP, BOOTP or RARP, you must set the `BOOT METHOD` to static so that the print server has a static IP address. This will prevent the print server from trying to obtain an IP address from any of these systems. To change the `BOOT METHOD`, use the BRAdmin Professional utility.

Using BOOTP to configure the IP address

BOOTP is an alternative to RARP that has the advantage of allowing configuration of the subnet mask and gateway. In order to use BOOTP to configure the IP address make sure that BOOTP is installed and running on your host computer (it should appear in the `/etc/services` file on your host as a real service; type `man bootpd` or refer to your system documentation for information). BOOTP is usually started up via the `/etc/inetd.conf` file, so you may need to enable it by removing the “#” in front of the bootp entry in that file. For example, a typical bootp entry in the `/etc/inetd.conf` file would be:

```
#bootp dgram udp wait /usr/etc/bootpd bootpd -i
```

Depending on the system, this entry might be called “bootps” instead of “bootp”.



Note

In order to enable BOOTP, simply use an editor to delete the “#” (if there is no “#”, then BOOTP is already enabled). Then edit the BOOTP configuration file (usually `/etc/bootptab`) and enter the name, network type (1 for Ethernet), Ethernet address and the IP address, subnet mask and gateway of the print server. Unfortunately, the exact format for doing this is not standardized, so you will need to refer to your system documentation to determine how to enter this information (many UNIX® systems also have template examples in the `bootptab` file that you can use for reference). Some examples of typical `/etc/bootptab` entries include:

```
BRN_310107 1 00:80:77:31:01:07 192.168.1.2
and:
```

```
BRN_310107:ht=ethernet:ha=008077310107:\
ip=192.168.1.2:
```

Certain BOOTP host software implementations will not respond to BOOTP requests if you have not included a download filename in the configuration file; if this is the case, simply create a null file on the host and specify the name of this file and its path in the configuration file.

As with RARP, the print server will load its IP address from the BOOTP server when the printer is powered on.

Using RARP to configure the IP address

The Brother print server’s IP address can be configured using the Reverse ARP (RARP) facility on your host computer. This is done by editing the `/etc/ethers` file (if this file does not exist, you can create it) with an entry similar to the following:

```
00:80:77:31:01:07 BRN_310107
```

Where the first entry is the Ethernet address of the print server and the second entry is the name of the print server (the name must be the same as the one you put in the `/etc/hosts` file).

If the RARP daemon is not already running, start it (depending on the system the command can be `rarpd`, `rarpd -a`, `in.rarpd -a` or something else; type `man rarpd` or refer to your system documentation for additional information). To verify that the RARP daemon is running on a Berkeley UNIX®-based system, type the following command:

```
ps -ax | grep -v grep | grep rarpd
```

For AT&T UNIX®-based systems, type:

```
ps -ef | grep -v grep | grep rarpd
```

The Brother print server will get the IP address from the RARP daemon when the printer is powered on.

Using APIPA to configure the IP address

The Brother print server supports the Automatic Private IP Addressing (APIPA) protocol. With APIPA, DHCP clients automatically configure an IP address and subnet mask when a DHCP server is not available. The device chooses its own IP address in the range 169.254.1.0 through to 169.254.254.255. The subnet mask is automatically set to 255.255.0.0 and the gateway address is set to 0.0.0.0.

By default, the APIPA protocol is enabled. If you want to disable the APIPA protocol, you can disable it using control panel of the machine. For more information, see *APIPA* on page 18.

If the APIPA protocol is disabled, the default IP address of a Brother print server is 192.0.0.192. However, you can easily change this IP address number to match with the IP address details of your network.

Using ARP to configure the IP address

If you are unable to use the BRAdmin application and your network does not use a DHCP server, you can also use the ARP command. The ARP command is available on Windows® systems that have TCP/IP installed as well as UNIX® systems. To use `arp` enter the following command at the command prompt:

```
arp -s ipaddress ethernetaddress
```

Where `ethernetaddress` is the Ethernet address (MAC address) of the print server and `ipaddress` is the IP address of the print server. For example:

Windows® systems

Windows® systems require the hash "-" character between each digit of the Ethernet address.

```
arp -s 192.168.1.2 00-80-77-31-01-07
```

UNIX®/Linux systems

Typically, UNIX® and Linux systems require the colon ":" character between each digit of the Ethernet address.

```
arp -s 192.168.1.2 00:80:77:31:01:07
```



Note

You must be on the same Ethernet segment (that is, there cannot be a router between the print server and operating system) to use the `arp -s` command.

If there is a router, you may use BOOTP or other methods described in this chapter to enter the IP address. If your Administrator has configured the system to deliver IP addresses using BOOTP, DHCP or RARP your Brother print server can receive an IP address from any one of these IP address allocation systems. In which case, you will not need to use the ARP command. The ARP command only works once. For security reasons, once you have successfully configured the IP address of a Brother print server using the ARP command, you cannot use the ARP command again to change the address. The print server will ignore any attempts to do this. If you wish to change the IP address again, use a web browser, TELNET (using the SET IP ADDRESS command) or factory reset the print server (which will then allow you to use the ARP command again).

To configure the print server and to verify the connection, enter the following command `ping ipaddress` where `ipaddress` is the IP address of the print server. For example, `ping 192.189.207.2`.

Using the TELNET console to configure the IP address

You can also use the TELNET command to change the IP address.

Using TELNET is effective way, when you change the IP address. But a valid IP address must already be programmed into the print server.

Type `TELNET ipaddress` at the command prompt of the system prompt, where `ipaddress` is the IP address of the print server. When you are connected, push the Return or Enter key to get the "#" prompt, enter the password "**access**" (the password will not appear on the screen).

You will be prompted for a user name. Enter anything in response to this prompt.

You will then get the `Local>` prompt. Type `SET IP ADDRESS ipaddress`, where `ipaddress` is the desired IP address you wish to assign to the print server (check with your network manager for the IP address to use). For example:

```
Local> SET IP ADDRESS 192.168.1.3
```

You will now need to set the subnet mask by typing `SET IP SUBNET subnet mask`, where `subnet mask` is the desired subnet mask you wish to assign to the print server (check with your network manager for the subnet mask to use). For example:

```
Local> SET IP SUBNET 255.255.255.0
```

If you do not have any subnets, use one of the following default subnet masks:

255.0.0.0 for class A networks

255.255.0.0 for class B networks

255.255.255.0 for class C networks

The leftmost group of digits in your IP address can identify the type of network you have. The value of this group ranges from 1 through 127 for Class A networks (e.g., 13.27.7.1), 128 through 191 for Class B networks (e.g., 128.10.1.30), and 192 through 223 for Class C networks (e.g., 192.168.1.4).

If you have a gateway (router), enter its address with the command `SET IP ROUTER routeraddress`, where `routeraddress` is the desired IP address of the gateway you wish to assign to the print server. For example:

```
Local> SET IP ROUTER 192.168.1.4
```

Type `SET IP METHOD STATIC` to set the method of IP access configuration to static.

To verify that you have entered the IP information correctly, type `SHOW IP`.

Type `EXIT` or Ctrl-D (i.e., hold down the control key and type "D") to end the remote console session.

Using the Brother Web BRAdmin server software for IIS* to configure the IP address

The Web BRAdmin server software is designed to manage all LAN/WAN Brother network connected devices. By installing the Web BRAdmin server software on a computer running IIS*, Administrators with a web browser can connect to the Web BRAdmin server, which then communicates with the device itself. Unlike the BRAdmin Professional utility - which is designed for Windows® systems only - the Web BRAdmin server software can be accessed from any client computer with a web browser that supports Java.

Please note this software is not included on the CD-ROM that was supplied with your Brother product.

Please visit <http://solutions.brother.com/webbradmin> to learn more about this software and to download it.

IIS* = Internet Information Server 4.0, 5.0 or 5.1

Installation when using a Network Print Queue or Share (printer driver only)



Note

- You must configure the IP address on your machine before you proceed with this chapter. If you have not configured the IP address, see *Chapter 2* first.
- Verify the host computer and print server are either on the same subnet, or that the router is properly configured to pass data between the two devices.
- Before installation, if you are using Personal Firewall software (e.g. the Internet Connection Firewall available in Windows XP), disable it. Once you are sure that you can print, re-start your Personal Firewall software.

- 1 Start the CD-ROM installation menu program according to the Quick Setup Guide.
- 2 Select the model name and your language (if necessary), and then click **Install Optional Applications**.
- 3 Click **Printer Driver (Only)**.
- 4 Click **Next** in response to the Welcome message. Follow the on-screen instructions.
- 5 Select **Standard Installation** and click **Next**.
- 6 Select **Network Shared Printer**, and then click **Next**.
- 7 Select your printer's queue, and then click **OK**.



Note

Contact your administrator if you are not sure about the location and name of the printer in the network.

- 8 Click **Finish**.

Multi-function Print Server specifications

Operating system support	Windows® 98/98SE/Me, Windows NT® 4.0, Windows® 2000/XP, Windows® XP Professional x64 Edition Mac OS® 9.1 to 9.2, Mac OS® X 10.2.4 or greater	
Protocol support	TCP/IP: IPv4	ARP, RARP, BOOTP, DHCP, APIPA (Auto IP), ICMP, WINS/NetBIOS, DNS, mDNS, LPR/LPD, Custom Raw Port/Port9100, POP3/SMTP, IPP, FTP, TELNET, SNMP, HTTP, TFTP, LDAP
	TCP/IP: IPv6	ICMPv6, NDP, DNS, mDNS, LPR/LPD, Custom Raw Port/Port9100, POP3/SMTP, IPP, FTP, TELNET, SNMP, HTTP, TFTP, LDAP
Network type	10/100BASE-TX Ethernet network	
Network printing	Windows® 98/98SE/Me Peer-to-Peer printing Windows NT® 4.0 and Windows® 2000/XP TCP/IP printing Macintosh® printing (Mac OS® 9.1-9.2 and Mac OS® 10.2.4 or greater supporting TCP/IP)	
Computer requirements (for drivers, BRAdmin Professional, Peer-to-Peer software, etc.)	Processor Minimum Speed	Intel® Pentium® II or equivalent for Windows® 98/98SE/Me/2000 Professional/XP and Windows NT® 4.0 AMD Opteron™, AMD Athlon™ 64, Intel® Xeon™ with Intel® EM64T, Intel® Pentium® 4 with Intel® EM64T for Windows® XP Professional x64 Edition
	Minimum RAM	32MB for Windows® 98/98SE/Me 64MB for Windows® 2000 Professional and Windows NT® 4.0 128MB for Windows® XP 256MB for Windows® XP Professional x64 Edition
	Recommended RAM	128MB for Windows® 98/98SE/Me 256MB for Windows® 2000 Professional and Windows NT® 4.0 256MB for Windows® XP 512MB for Windows® XP Professional x64 Edition
Macintosh® connection	Computer	Ethernet ready Power Macintosh®
	Processor Minimum Speed	All base models meet minimum requirements
	Minimum RAM	32MB for Mac OS® 9.1 to 9.2 128MB for Mac OS® X 10.2.4 or greater
	Recommended RAM	64MB for Mac OS® 9.1 to 9.2 160MB for Mac OS® X 10.2.4 or greater
Management utilities	BRAdmin Professional utility	Windows® 98/98SE/Me, Windows NT® 4.0, Windows® 2000/XP
	BRAdmin Light	Mac OS® X 10.2.4 or greater
	Web BRAdmin	Windows® 2000 Professional / Server / Advanced Server, Windows® XP Professional

Function Table and Default Factory Settings

LEVEL ONE	LEVEL TWO	LEVEL THREE	LEVEL FOUR	OPTIONS	OPTIONS
6.LAN (MFC-8460N and MFC-8860DN) 4.LAN (DCP-8065DN)	1.Setup TCP/IP	1.BOOT Method		Auto/ Static/ RARP/ BOOTP/ DHCP	
		2.IP Address		[169].[254].[001-254].[000-255] *1	
		3.Subnet Mask		[255].[255].[000].[000] *1	
		4.Gateway		[000].[000].[000].[000]	
		5.Node Name		BRN_XXXXXX =(last 6 figures of the Ethernet address) (up to 15 characters)	BRN_XXXXXX
		6.WINS Config		Auto/ Static	
		7.WINS Server		(Primary) [000].[000].[000].[000]	
				(Secondary) [000].[000].[000].[000]	
		8.DNS Server		(Primary) [000].[000].[000].[000]	
				(Secondary) [000].[000].[000].[000]	
		9.APIPA		On/Off	
		0.IPv6		On/Off	
	2.Ethernet			Auto/ 100B-FD/ 100B-HD/ 10B-FD/ 10B-HD	
	3.Setup IFAX (MFC-8860DN only)	1.Setup Internet	1.Mail Address	(60 characters)	
			2.SMTP Server	[000].[000].[000].[000]	Name (up to 30 characters)
			3.POP3 Server	[000].[000].[000].[000]	Name (up to 30 characters)
			4.Mailbox Name	(up to 20 characters)	
			5.Mailbox Pwd	Password:*****	Verify:*****
		2.Setup Mail RX	1.Auto Polling	On/ Off	
			2.Poll Frequency	10Min	
			3.Header	All/ Subject+From+To/ None	
			4.Del Error Mail	On/ Off	
			5.Notification	On/ MDN/ Off	
		3.Setup Mail TX	1.Sender Subject	Internet Fax Job	
			2.Size Limit	On/ Off	
			3.Notification	On/ Off	
		4.Setup Relay	1.Rly Broadcast	On/ Off	

		2.Relay Domain	RelayXX: XX=01-10 YYYYY=(up to 30 characters)	Relay01*YYYYY
		3.Relay Report	On/ Off	
4.Scan to E-mail (MFC-8860DN only)	1.Color		PDF/JPEG	
	2.B/W		TIFF/PDF	
3.Scan to FTP (MFC-8460N, DCP-8065DN) 5.Scan to FTP (MFC-8860DN)	1.Color		PDF/JPEG	
	2.B/W		TIFF/PDF	
6.Fax to Server (MFC-8860DN only)			On/ Off Prefix/Suffix	
7.Time Zone (MFC-8860DN only)			UTCXXX:XX	
0.Factory Reset	1.Reset		1.Yes 2.No	
	2.Exit			

- The factory settings are shown in Bold.
- *1: The factory setting for **IP Address** and **Subnet Mask** may be changed by the **APIPA** setting.

Entering Text

When setting certain menu selections, such as the Station ID, you will need to type text characters. The number keys have letters printed above them. The keys: 0, # * do *not* have printed letters because they are used for special characters.

Press the appropriate number key the required number of times to access the characters below:

(For setting an email address)

Press Key	one time	two times	three times	four times	five times	six times	seven times	eight times
2	a	b	c	A	B	C	2	a
3	d	e	f	D	E	F	3	d
4	g	h	i	G	H	I	4	g
5	j	k	l	J	K	L	5	j
6	m	n	o	M	N	O	6	m
7	p	q	r	s	P	Q	R	S
8	t	u	v	T	U	V	8	t
9	w	x	y	z	W	X	Y	Z

(For setting other menu selections)

Press Key	one time	two times	three times	four times
2	A	B	C	2
3	D	E	F	3
4	G	H	I	4
5	J	K	L	5
6	M	N	O	6
7	P	Q	R	S
8	T	U	V	8
9	W	X	Y	Z

Inserting spaces

To enter a space in a fax number, press ► once between numbers. To enter a space in a name, press ► twice between characters.

Making corrections

If you entered a letter incorrectly and want to change it, press ◀ to move the cursor under the incorrect character, press **Clear/Back**.

Repeating letters

To enter a character on the same key as the previous character, press ► to move the cursor right before pressing the key again.

Special characters and symbols

Press *, # or 0, then press ◀ or ▶ to move the cursor under the symbol or character you want. Press **OK** to select it.

Press * for (space) ! " # \$ % & ' () * + , - . / €*

Press # for ; < = > ? @ [] ^ _

Press 0 for Ä Ë Ö Ü À Ç È É

*€ is not available for I FAX settings.

I

Index

A

APIPA 5, 18, 71
ARP 71

B

BINARY_P1 69
BIP 35
BOOTP 5, 14, 70
BRAdmin Light 48
BRAdmin Professional 9, 10
BRN_xxxxxx_P1 69
BRN_xxxxxx_P1_A1 69
Brother Solutions Center 9, 48
Browser 51

C

Control panel 10

D

DHCP 5, 15, 69
DNS 11, 42, 51
DNS Client 5
DNS Server 18

E

E-mail 35
Ethernet 19

F

FTP 6

G

Gateway 8, 16

H

HTTP 6, 11, 50
Hyper Text Transfer Protocol 11, 50

I

IIS 73
Internet 35
Internet Printing 35

IP Address 7, 15
IPP 6, 35, 41, 67
IPv6 6, 19
ISP 35

L

LAN menu 13
LDAP 6, 52
LDAP Operation 53
LED (Print Server) 64
LPR/LPD 5

M

Macintosh® Printing 44
mDNS 6
MIME 35

N

Network Configuration List 31
Network Printing 32
Network Shared Printing 4

P

Password 32, 41
PCL_P1 69
Peer-to-Peer 3
Ping 64, 66
POP3 36
Port9100 5
POSTSCRIPT_P1 69
Print Server Settings 10
Protocol 5

R

RARP 5, 14, 70
Remote Setup 11
Restoring the network settings 30
RFC 1001 69
Router 8

S

Service 69
Simple Mail Transport Protocol 35
Simple Network Configuration 63
SMTP 35, 39

SMTP Client	6
SNMP	6
Specifications	75
Subnet Mask	8, 16

T

TCP/IP	5, 13
TCP/IP Printing	32
TELNET	6, 72
TEXT_P1	69
Trademarks	i

W

Web Based Management	50
Web BRAdmin	73
Web Browser	11
web browser	48
Web Server	6
Windows NT® 4.0 Printing	33
Windows® 2000	32, 35, 41, 67
Windows® 2000/XP Printing	32
Windows® XP	32, 35, 41, 67
WINS Config	17
WINS Server	17