

.....

***Printer Manual***

**FAX-4100/4100e**

# Table of Contents

---

## 1

<b>Printer Driver Settings (For Windows® Only) .....</b>	<b>1-1</b>
Using the Brother FAX-4100/4100e Printer Driver.....	1-1
Features in the Printer Driver .....	1-1
Basic Tab.....	1-2
Paper Size .....	1-3
Multiple Page.....	1-3
Border Line.....	1-3
Orientation .....	1-3
Copies .....	1-3
Collate.....	1-4
Media Type.....	1-4
Advanced Tab .....	1-5
Print Quality .....	1-5
Resolution .....	1-5
Toner Save .....	1-5
Print Setting (For Windows® 95/98/98SE/Me Only).....	1-6
Duplex Printing .....	1-6
Manual Duplex.....	1-6
Binding Offset.....	1-6
Watermark .....	1-7
Print Watermark.....	1-7
In Background.....	1-7
Watermark Text .....	1-8
Watermark Bitmap.....	1-8
Position .....	1-8
Page Setting.....	1-9
Device Options .....	1-10
Quick Print Setup .....	1-11
Administrator (For Windows® 95/98/98SE/Me Only) .....	1-11
Print Date & Time .....	1-12
Accessories Tab.....	1-13
Paper Source Setting.....	1-13
Default Source .....	1-13
Available Options.....	1-13
Support .....	1-14
Brother Solutions Center .....	1-14
Check Setting.....	1-14

Features in the Printer Driver (For Windows® 2000).....	1-15
General Tab .....	1-15
Printing Preferences .....	1-15
Layout Tab.....	1-16
*1 Orientation .....	1-16
*2 Pages Per Sheet .....	1-17
Paper/Quality Tab.....	1-17
*1 Paper Source .....	1-17
*2 Media .....	1-18
Advanced Options.....	1-18
*1 Paper /Output .....	1-18
*2 Graphic.....	1-19
*3 Document Options .....	1-19
Device Settings Tab.....	1-20
Installable Options .....	1-20

## 2

<b>How to Print, Fax and Scan Using Apple® Macintosh® .....</b>	<b>2-1</b>
For FAX-4100/4100e : Set up Your USB Equipped Apple Macintosh with Mac OS 8.5-9.2.....	2-1
How to Print Using Brother Printer Driver .....	2-1

# **1** Printer Driver Settings (For Windows® Only)

## ***Using the Brother FAX-4100/4100e Printer Driver***

---

A Printer Driver is software that translates data from the format used by a computer into the format required by a particular printer. A driver uses a printer command language or page description language.

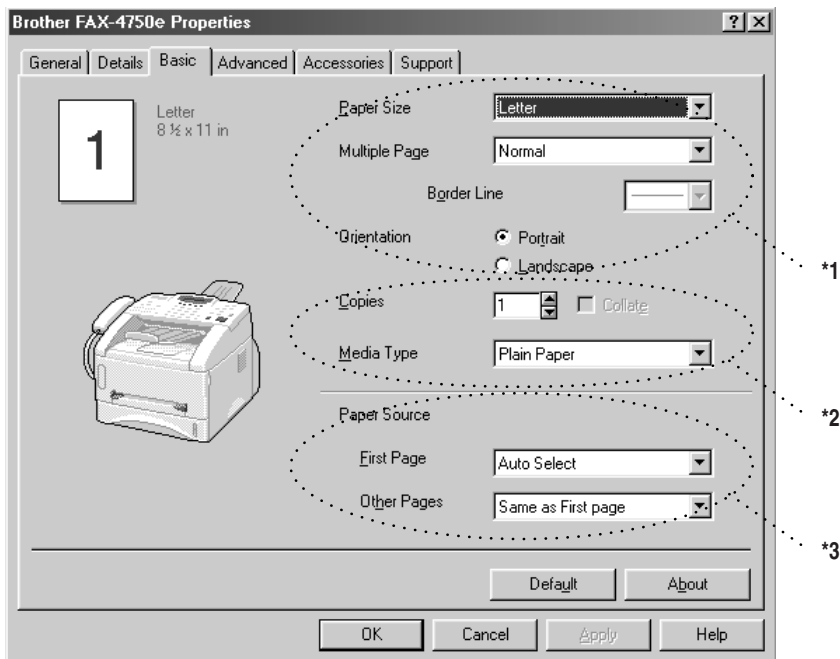
The latest printer driver can also be downloaded from the Brother Solutions Center at <http://solutions.brother.com>.

### **Features in the Printer Driver**



The screens shown in this section are from FAX-4750e Windows® 98. The screens on your PC may vary depending on your Windows® Operating System. For more detailed information, please see the on-line Help in the printer driver. You can also change settings by clicking the illustration on the left side of the tab screen.

# Basic Tab



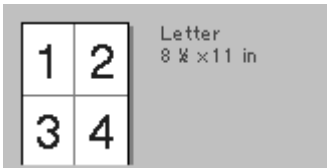
- \*1 Select the Paper size, Multiple Page and Orientation.
- \*2 Select number of Copies and Media Type.
- \*3 Select Paper Source, First Page and Other Pages.

## Paper Size

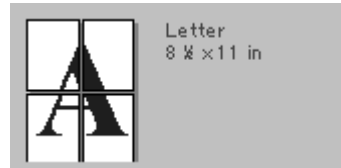
From the drop-down box select the Paper Size you are using.

## Multiple Page

The Multiple Page selection can reduce the image size of a page allowing multiple pages to be printed on one sheet of paper or enlarging the image size for printing on page on multiple sheets of paper.



**Ex. 4 in 1**



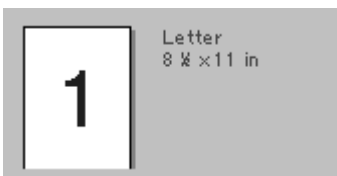
**Ex. 1 in 2 x 2 pages**

## Border Line

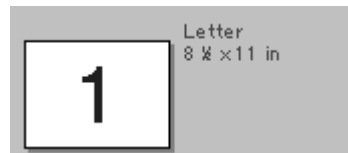
When printing multiple pages on one sheet with the Multiple Page feature you can select to have a solid border, dash border or no border around each page on the sheet.

## Orientation

Orientation selects the position of how your document will be printed (Portrait or Landscape).



**portrait**



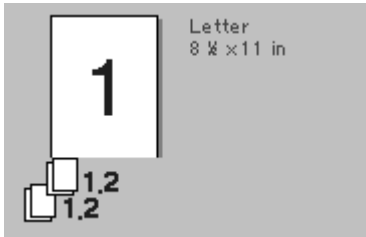
**Landscape**

## Copies

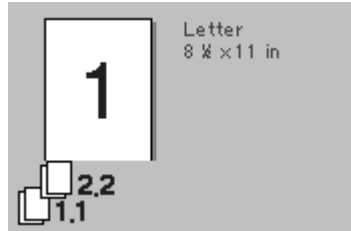
The copies selection sets the number of copies that will be printed.

## Collate

The collate selection is active if more than one copy is selected. With the collate check box selected, one complete copy of your document will be printed and then repeated for the number of copies you selected. If the collate check box is not selected then each page will be printed for all the copies selected before the next page in the document is printed.



Collate box checked



Collate box not checked

## Media Type

You can use the following types of media in your printer. For the best print quality, select the type of media that you wish to use.

**Plain Paper**

**Thin Paper**

**Thick Paper**

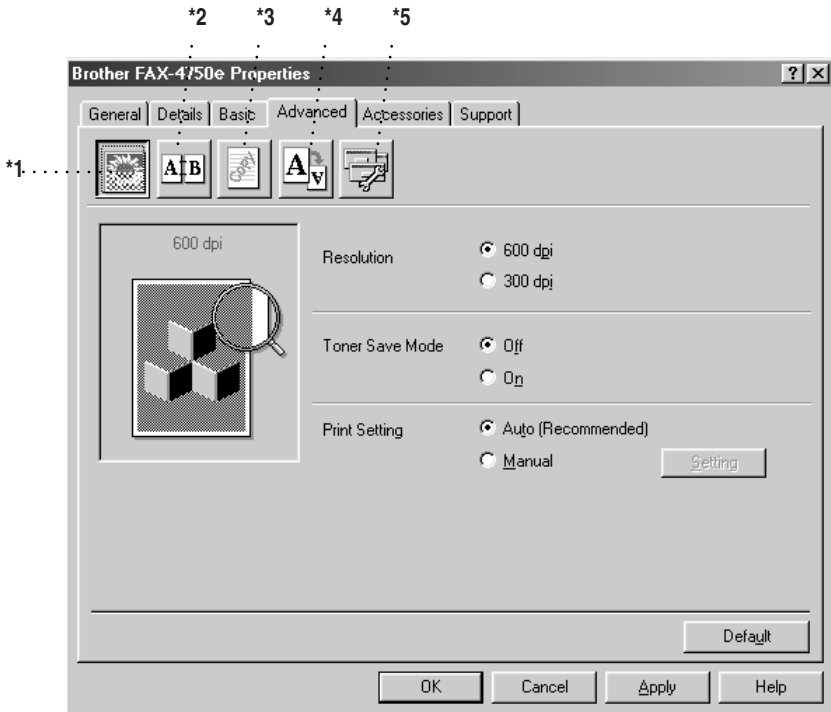
**Thicker Paper**

**Bond Paper**

**Transparencies**

When using ordinary plain paper, select **Plain Paper**. When using heavier weight paper, envelopes or rough paper select **Thick Paper** or **Thicker Paper**. For bond paper, select **Bond Paper** and for OHP transparencies, select **Transparencies**.

# Advanced Tab



Change the tab settings by selecting one of the following icons:

- \*1 Print Quality
- \*2 Duplex Printing
- \*3 Watermark
- \*4 Page Setting
- \*5 Device Option

## Print Quality

### Resolution

You can change the resolution as follows:

- 300 dpi
- 600 dpi

### Toner Save

You can save running costs by turning on the Toner Save Mode, which reduces the print density.



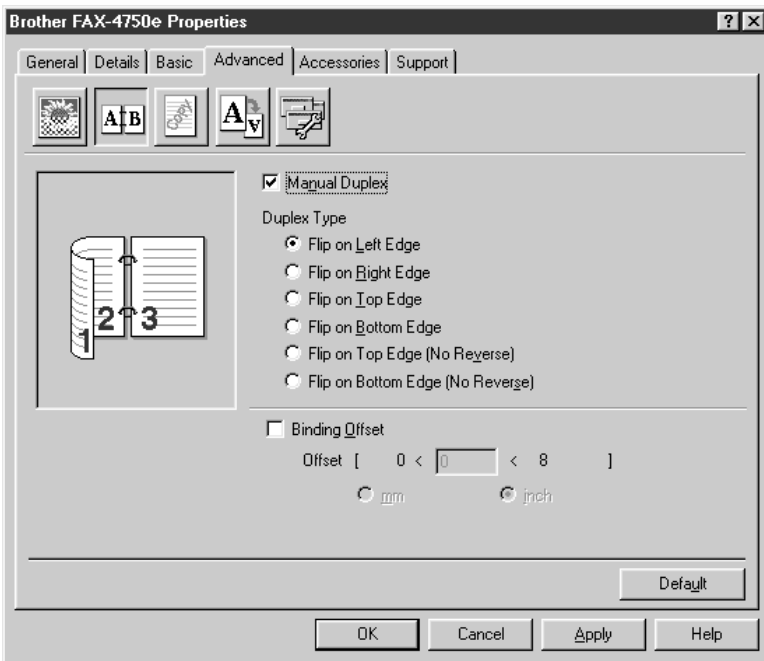
## Print Setting (For Windows® 95/98/98SE/Me Only)

Print Setting is used for optimizing your print quality for the type of document being printed (Photos, Graphics or Scanned Images). When you choose **Auto (Recommended)**, the printer automatically prints with the most suitable print settings.

With the Print Setting set to Manual, you can change the Brightness, Contrast and Graphics Quality options manually.

## Duplex Printing

Choosing the Duplex Printing icon displays the Manual Duplex features available.



### Manual Duplex

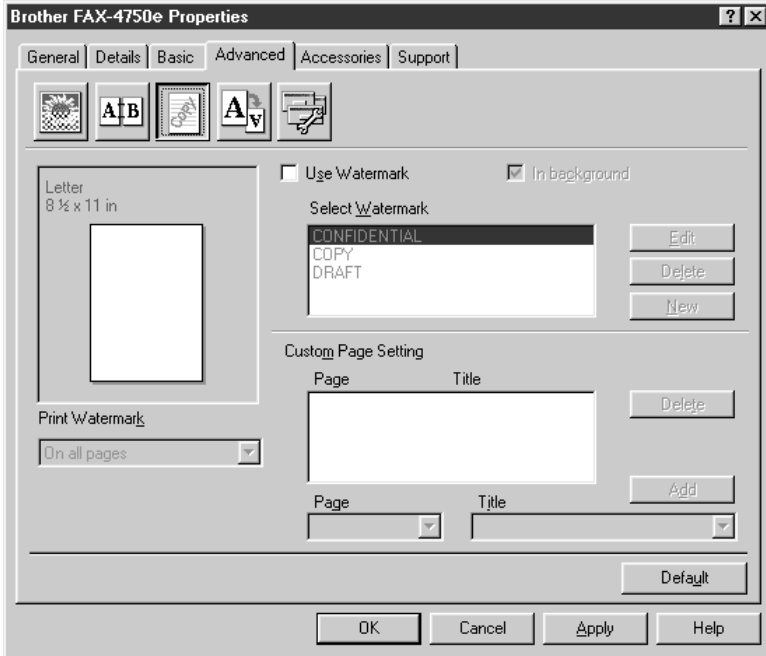
Check the Manual Duplex box and there are six types of duplex directions available for each orientation. In this mode, the MFC prints all the even numbered pages first. Then the printer driver stops and shows the instructions required to re-install the paper. When you click OK the odd numbered pages are printed.

### Binding Offset

Check the Binding Offset option, you can specify the offset value of the binding side in inches or millimeters (0 - 8 inches) [0 - 203.2 mm].

# Watermark

You can place a logo or text into your document as a Watermark by using a bitmap file as your source file or select one of the preset Watermarks.



## Print Watermark

The Print Watermark feature offers printing choices of:

**On all pages**

**On first page only**

**From second page**

**Custom**

## In Background

With the In Background feature checked the Watermark will print behind your document on the page. If this feature is not checked then the Watermark will print on top of your document.

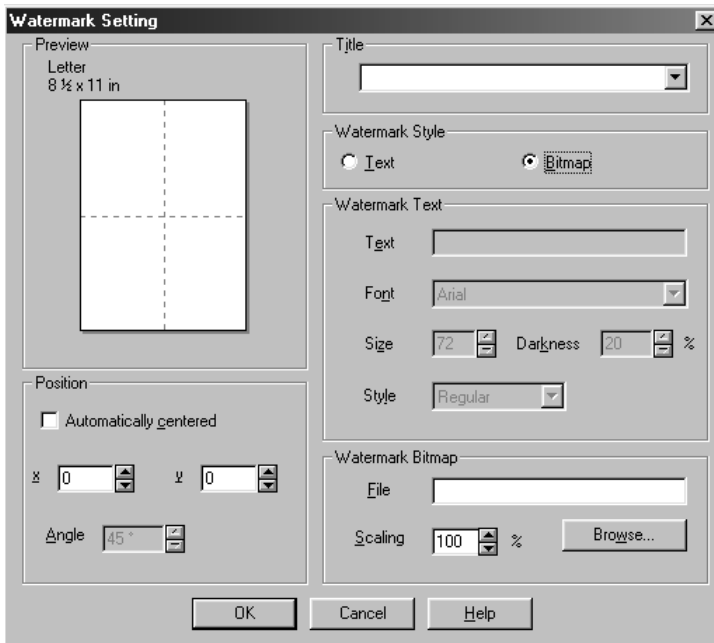
You can change the size and the position of the Watermark on the page by selecting the Watermark and clicking the Edit button. If you want to add a new Watermark, click the New button and select Text or Bitmap from the Watermark Style.

## Watermark Text

Enter your Watermark text into the Text Box and select the Font, Size, Darkness and Style.

## Watermark Bitmap

Enter the file name and location of your bitmap image in the File box or Browse for the file location. You can also set the scaling size of the image.

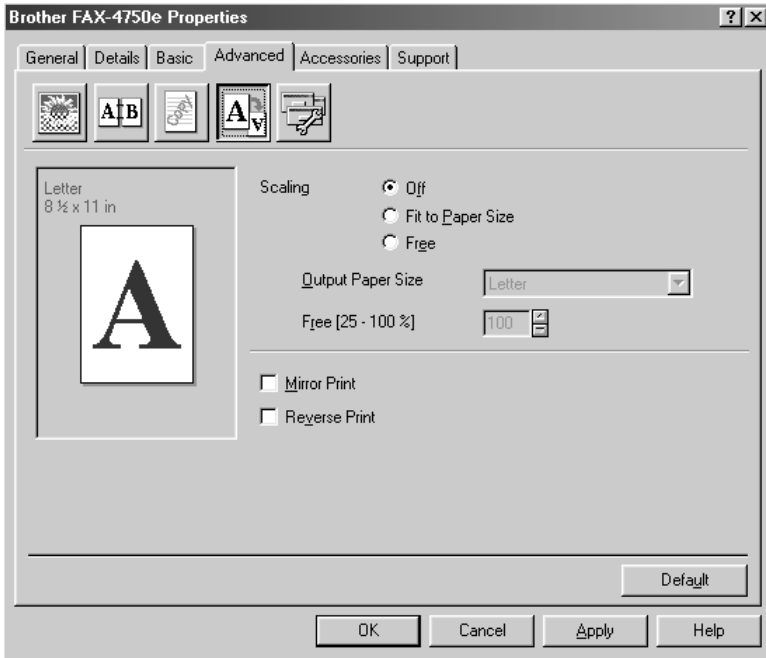


## Position

The position settings offer controls on where the Watermark can be positioned on the page.

## Page Setting

You can change the print size of your document with the Scaling feature.

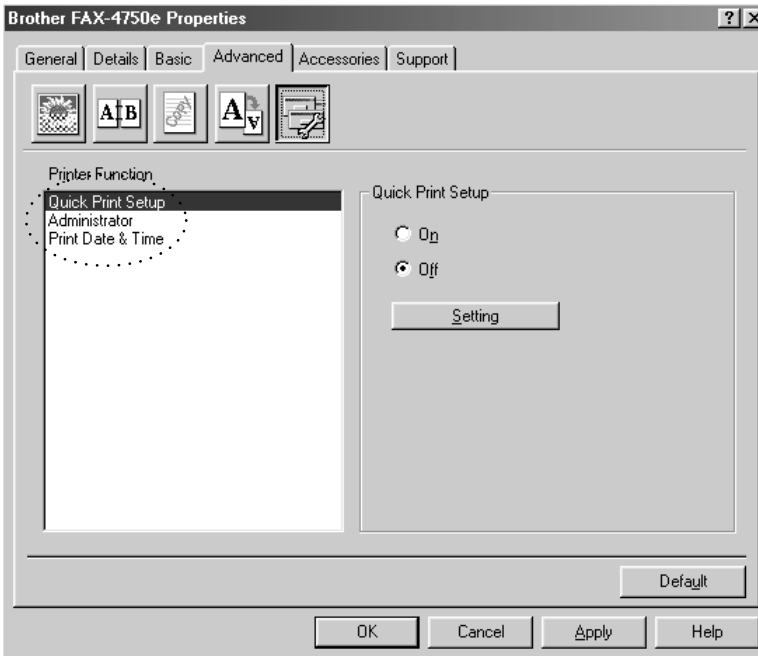


- 1 Check Off if you want to print the document as it appears on your screen.
- 2 Check Fit to Paper Size, if your document has an unusual size, or if you have only the standard size paper.
- 3 Check the Free box if you want to reduce or enlarge the output.

You can also use the Mirror or Reverse Print feature for your page setting.

# Device Options

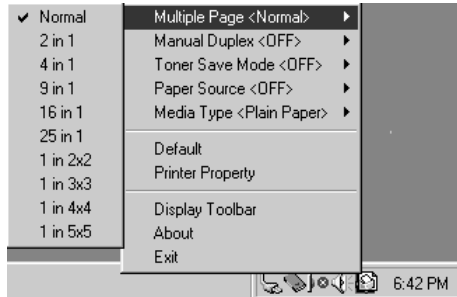
Set one of the following Printer Functions:



Quick Print Setup  
Administrator (For Windows® 95/98/98SE/Me Only)  
Print Date & Time

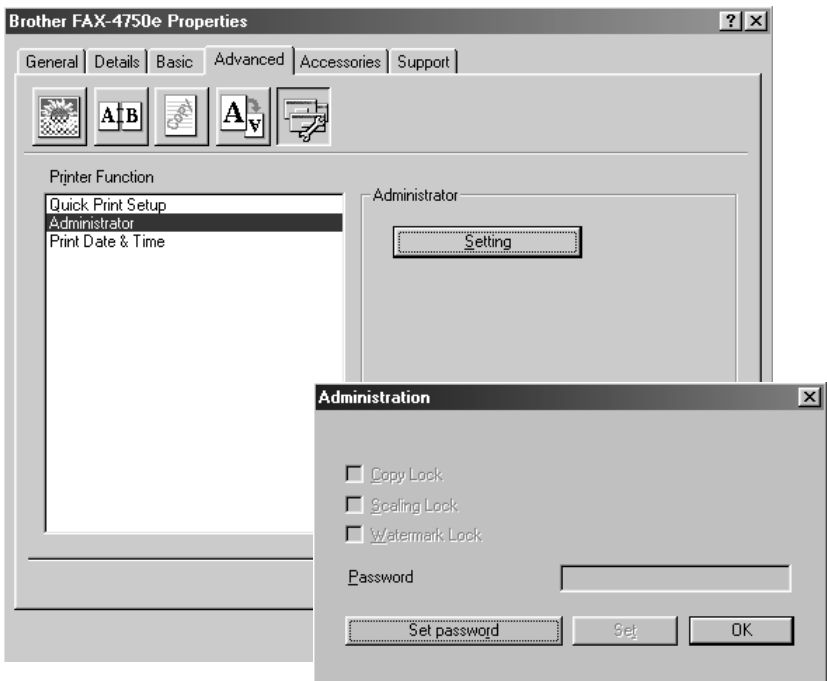
## Quick Print Setup

The Quick Print Setup feature allows you to quickly select driver settings. To view settings, simply click your mouse button on the task tray icon. This feature can be set to ON or OFF from the Device Options section.



## Administrator (For Windows® 95/98/98SE/Me Only)

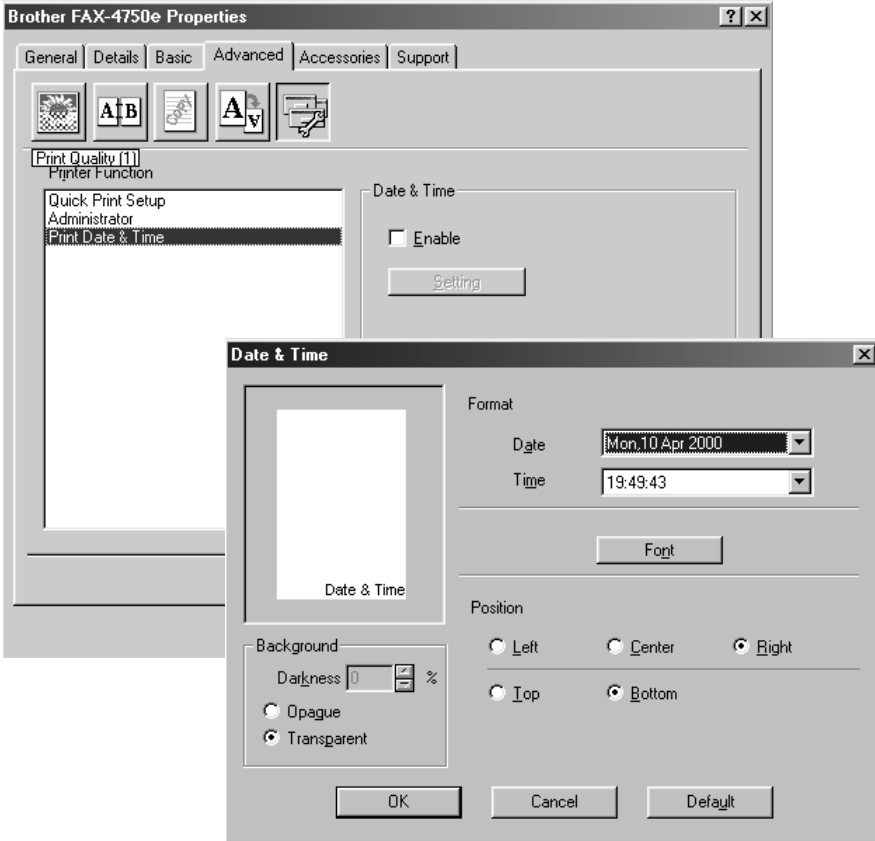
The administrator selection permits the Copy, Scaling and Watermark features to be locked and password protected.



Record your password and keep it in a safe place for future reference. If you forget your password these settings can not be accessed.

## Print Date & Time

When enabled the Print Date and Time feature will automatically print the date and time from your computers system clock on your document.



Click the Setting button to change the Date and Time Format, Position and Font. To include a background with the Date and Time select Opaque. When Opaque is selected you can set the Darkness of the Date and Time background by changing the percentage.



The Date and Time indicated in the selection box represents the format that will be printed. The actual Date and Time printed on your document is automatically retrieved from the settings of your computer.

# Accessories Tab

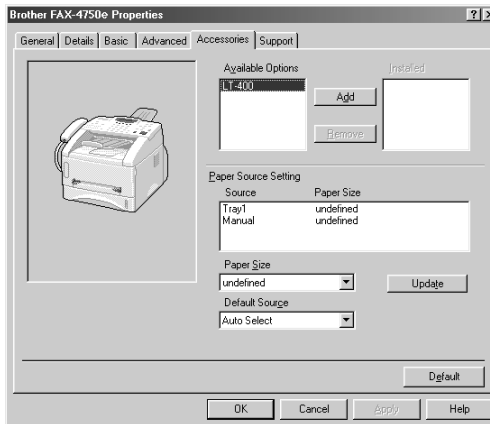
The Accessories Tab includes the settings for configuring the printer driver for what size paper is being used for each paper source. This tab also installs any additional options into the driver settings.

## Paper Source Setting

To configure the paper size for each paper source, highlight the source from the **Paper Source Setting** list. Select the **Paper Size** from the pull-down box and click **Update**. (The Paper Source Setting is used when selecting **Auto Select** in the Basic Tab.)

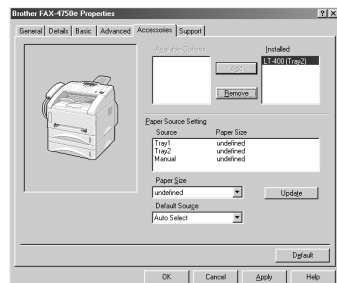
## Default Source

The Default Source allows you to choose which paper source will be used when the paper size of the document being sent does not match the Paper Source Settings.



## Available Options

In order to access the optional 2nd paper tray the option must be installed in the driver. Highlight the model number from the **Available Options** list and click **Add**. The optional tray will then be listed in the **Installed** box, **Paper Source Setting** list and the screen illustration will display the 2nd tray.





# Support

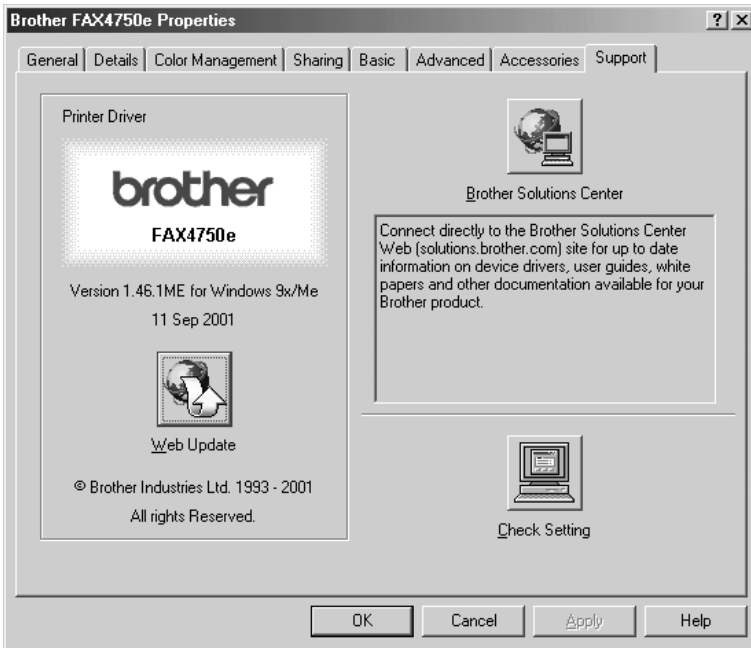
The Support Tab provides driver version information and setting information. In addition there are links to the Brother Solution Center and Driver Update Web sites.

## Brother Solutions Center

The Brother Solutions Center is a Web site offering information about your Brother product including FAQ's , User Guides, Driver updates and Tips for using your machine.

## Check Setting

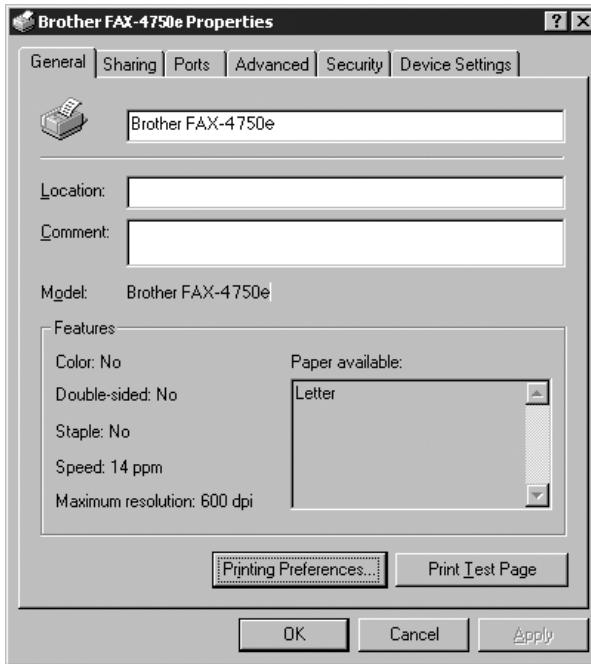
The Check Setting selection displays a list of your current drivers settings.



# Features in the Printer Driver (For Windows® 2000)

The Windows® 2000 printer driver utilizes Microsoft's uni-driver architecture. The following section describes the driver features and selections available for Windows® 2000.

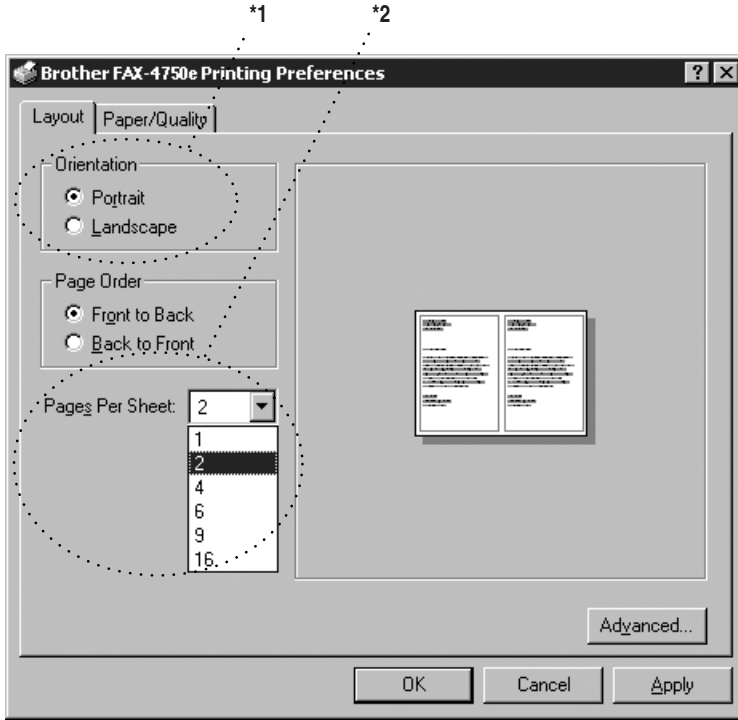
## General Tab



## Printing Preferences

In the General tab, click the **Printing Preferences...** button to access the Layout tab.

# Layout Tab

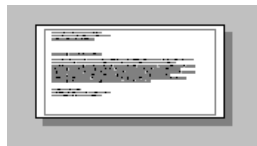


## \*1 Orientation

Select the Orientation, which is how your document will be positioned on the paper (Portrait or Landscape).



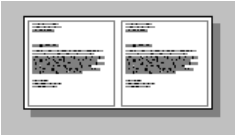
Portrait



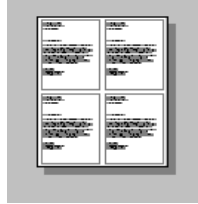
Landscape

## \*2 Pages Per Sheet

You can select 1, 2, 4, 6, 9 or 16 pages to be printed on one sheet of paper. The image of each page will be reduced as needed to fit on the paper.

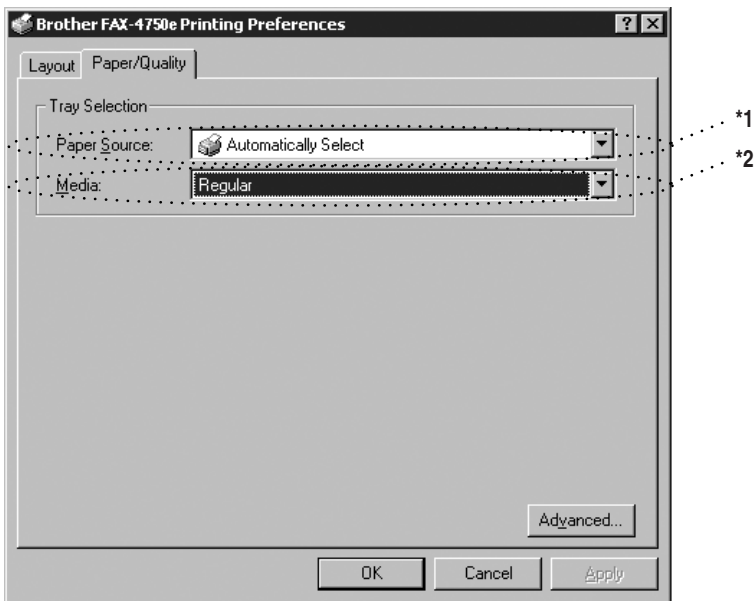


2 in 1



4 in 1

## Paper/Quality Tab



### \*1 Paper Source

Possible paper sources are: Automatically Select, Auto, Upper Paper Tray, Lower Paper Tray (optional cassette #2) and Manual Feed Slot.

When “Automatically Select” is chosen the machine automatically will choose the cassette with the appropriate size of paper.

**Note** The paper size for each paper source must be set in the Device Settings tab for the Automatically Select feature to work properly.

The “Auto” option is for machines that can automatically detect the size of paper that is loaded in the paper source; Auto is not active for your machine.

## \*2 Media

For the best print quality, select the type of media you are using:

Regular

Thick Paper

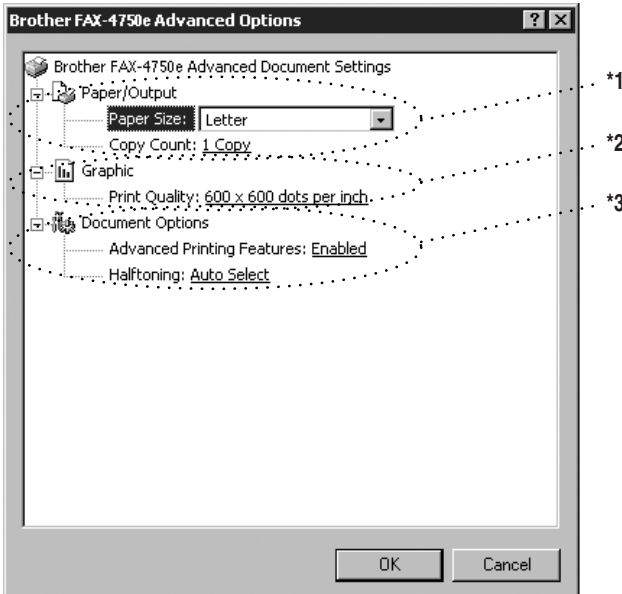
Thicker Paper

Transparency

When using ordinary plain paper, select Regular. When using heavier weight paper, envelopes, or rough paper, select Thick Paper or Thicker Paper. For OHP transparencies, select Transparency.

## Advanced Options

Click the **Advanced...** button in the Paper/Quality tab to access the screen below:



### \*1 Paper /Output

*Paper Size* – Select the paper size of the document you are printing. This size should be the same as the paper size that is set in your application software.

*Copy Count* – Type the number of copies you want.

## **\*2 Graphic**

*Print Quality* – You can change the resolution as follows:

600 × 600 dots per inch

300 × 300 dots per inch

## **\*3 Document Options**

*Advanced Printing Features* – You can Enable or Disable Advanced Printing Features from this selection. If you disable it, Page Order, Pages Per Sheet, Copy and Collate will be disabled.

*Halftoning* – This selection is for changing the dither pattern to achieve the best print results when printing graphics. The choices are as follows:

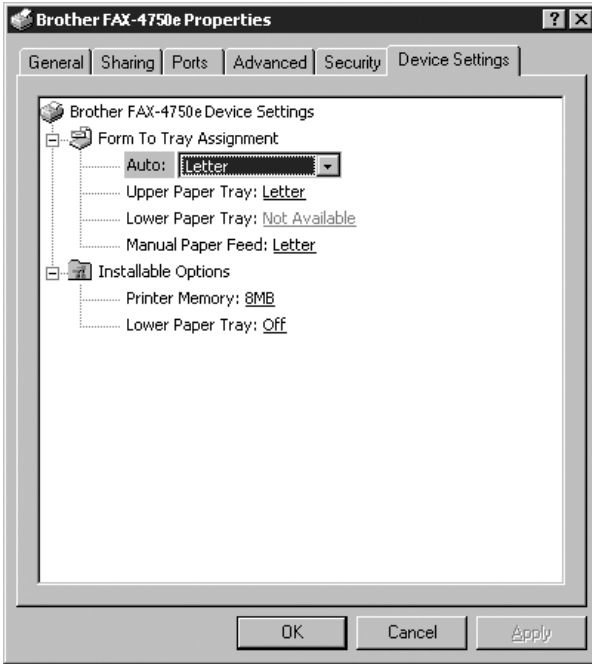
Auto Select

Super Cell

Dither 6 × 6

Dither 8 × 8

# Device Settings Tab



*Form To Tray Assignment* – This selection assigns the paper size to each paper source. For auto paper selection (Automatically Select) to work properly, the paper size set for each source must match the actual size of paper loaded.

The available options are:

- A4
- A5
- B5 (JIS)
- Executive
- Legal
- Letter

## Installable Options

*Printer Memory* – If you installed optional memory in your machine, you must select the correct size of total memory in the machine for the driver to access the additional memory.

*Lower Tray* – If an optional lower tray is installed, this selection must be set to ON to enable access to the lower tray.

# 2

# How to Print, Fax and Scan Using Apple® Macintosh®

## *For FAX-4100/4100e: Set up Your USB Equipped Apple® Macintosh® with Mac OS 8.5-9.2*



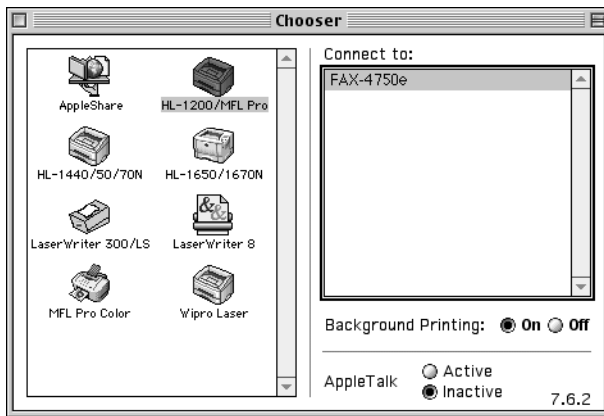
Before you can connect the Brother machine to your Macintosh®, you must purchase a USB cable that is no longer than 6 feet (1.8 meters).

To work with your Brother machine your USB Equipped Apple® Macintosh® must be set up with Mac OS 8.5-9.2

## *How to Print Using Brother Printer Driver*

To select the Printer:

- 1 From the Apple menu, open the **Chooser**.

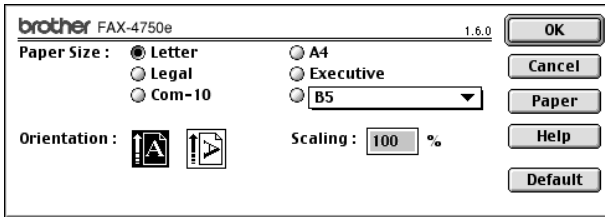


- 2 Click HL-1200/MFL Pro icon. On the right side of the Chooser, click the printer to which you want to print. Close the Chooser.

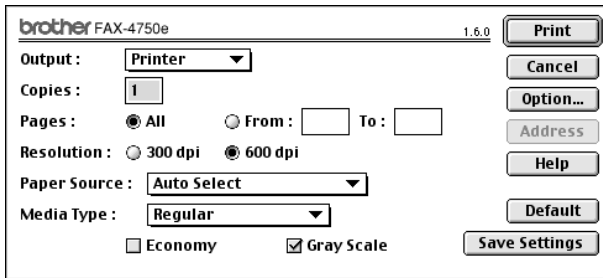


### To print the document:

- From application software such as PaperPort®, click *File menu* and select *Page Setup*. You can change the settings for **Paper Size**, **Orientation** and **Scaling**, and then click **OK**.



- From application software such as PaperPort, click *File menu* and select *Print*. Click **Print** to start printing.



**Note** If you want to change **Copies**, **Pages**, **Resolution**, **Paper Source** and **Media Type**, select your settings before clicking **Print**.

Option Setup allows you to select **Duplex**.

