

For Windows® users only
HL-2460 / 3260N

brother

Printer driver and Utilities



This document provides an introduction to the printer driver functions and utilities. The printer driver and utilities are available on the CD-ROM that was supplied with your printer.

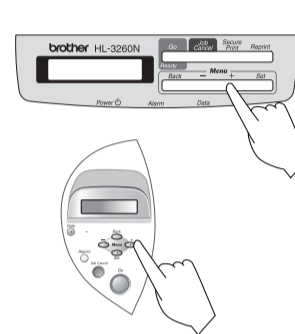
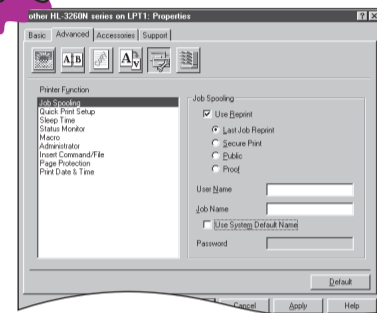
Printed in Japan LJ0741001

Some illustrations are based on the HL-3260N Printer.
 cost saving professional administrator utility help you

Printer driver function

The Brother Printer Driver lets you access printer features in a simple to use, intuitive manner and features a host of useful features that enhance productivity and ensure you get the most from your printer. For the latest driver and to find the best solution for your problem or question, access the Brother Solutions Center directly from the driver or go to <http://solutions.brother.com>

Secure Printing



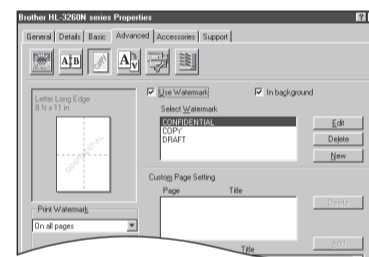
Send confidential documents from your Windows applications in secure print mode. Confidential documents are only printed by entering your PIN number on the printer Control panel. For more information, see Chapter 3 of the printer User's Guide or go to <http://solutions.brother.com>

Note For increased performance we recommend the installation of the optional HD-6G/HD-EX HDD, Compact Flash™ or DIMM memory module. Refer to chapter 4 of the User's guide or go to <http://solutions.brother.com>

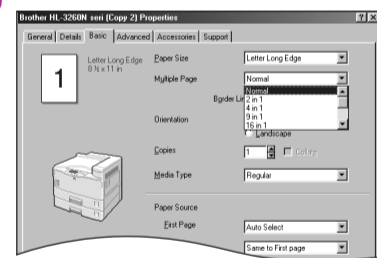
Watermark Printing



Watermark your documents using pre-defined messages. You can also create your own watermarks using text or bitmap images.



Multiple Page



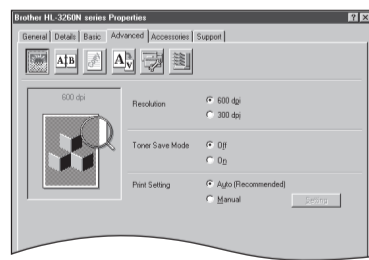
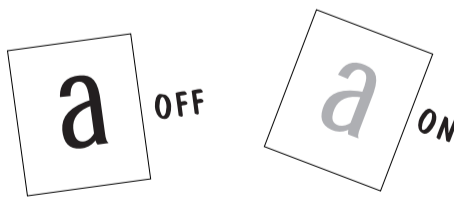
N in 1
Use the Multipage option to compress pages of text into single sheets of paper. From 2 to 25 pages can be compressed into a single page.

Poster Printing
Select Poster Print mode to enlarge single sheets of paper to up to 25 times their original size.

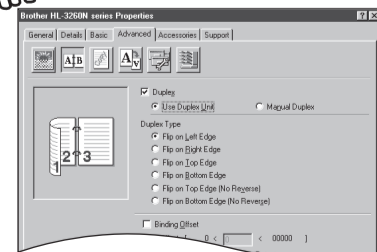


Toner Save

Use less toner and save money on your running costs by enabling the "Toner Save" option.

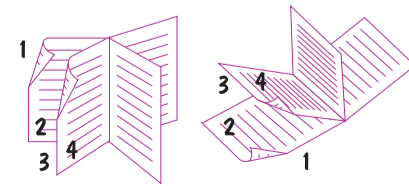


Automatic and Semi-Automatic Duplex Printing

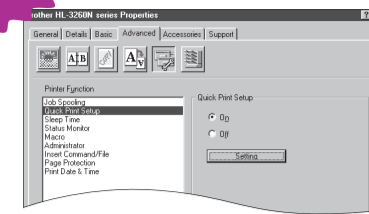


For casual duplex printing, use the Manual Duplex option to manually print on both sides of the paper. For leaflet or booklet printing, or more heavy duty duplex printing, purchase the appropriate duplex unit.

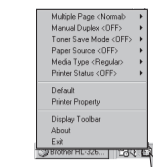
Note HL-2460 Automatic Duplex Unit Model name: Duplex unit (DX-4000)
HL-3260N Automatic Duplex Unit Model name: Duplex unit (DX-5000)
Interchange unit (SP-5000) is also required.



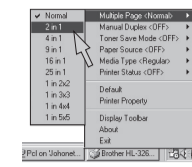
Quick Print Setup



A Task Bar based application to access commonly used driver features.



1 Right-click the icon (with the right mouse button) to see the current main printer settings.



2 Change the settings by moving the cursor to the menu you want to change.

Note You can make the Quick Print Setup icon appear or disappear from the task tray by using the settings in the printer driver Properties tab. Go to <http://solutions.brother.com> for more information.

Brother Solutions Center



Connect directly to the Brother Solutions Center (<http://solutions.brother.com>) Web site for up to date information on printer drivers, user guides, white papers and other documentation available for your Brother printer.

Utilities

There is a substantial amount of utility software support for users and administrators.

Interactive Help



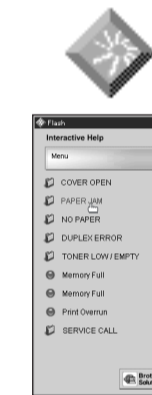
Your personal, on-line, 24 hour a day, 7 days a week support line. Animated movies appear on your desktop when a printer error occurs. View the animation to learn and understand how to solve the problem. Go to <http://solutions.brother.com> for more information on this unique feature. To use the Interactive Help, select "Yes" in the confirmation dialog displayed at the last step of installing the printer driver. You can install the Interactive Help.

For Parallel Cable (HL-2460 and HL-3260N) and USB Cable Users (HL-2460 only)



- When a printer error occurs, the Status Monitor icon appears on the task tray if the Status Monitor is enabled in the printer driver.
- Right-click (or double-click) the Status Monitor icon and select Interactive Help and watch a video for the reported problem.

For Network Users:



A short cut icon appears on the desktop after you have installed the printer driver. When an Error message appears on the printer LCD, double-click the matching shortcut icon on the desktop.

- Select the error message that appeared on the printer control panel LCD.
- Watch a video that demonstrates relevant information for the reported problem.

Note When you use Brother LPR Peer to Peer printing software, the Status Monitor icon appears on the task tray when an error occurs.

Automatic E-mail Printing

(For Windows® 95/98/Me users only)

Anyone sharing a common e-mail address who requires their mail to be printed automatically can benefit from the use of the Automatic E-mail Printing software. This software downloads and prints E-mail automatically and can be tailored to receive mail and print mail at set intervals or at selected times.

For Administrators Only

BRAdmin Professional



This software is a utility for managing your Brother network enabled printers, which runs on Windows® 95/98/Me, Windows® 2000 and Windows NT® 4.0. The BRAdmin Professional software provides sophisticated network and printer management capabilities for Brother products. By identifying potential problems before they are noticed and by addressing important IT requirements such as streamlined printer configuration, mass configuration and enterprise-wide upgrades, the BRAdmin Professional software plays an important role in Printer network management.

Storage Manager



Use the Brother storage manager software to manage fonts and macros (electronic forms) stored in the printer memory, Compact Flash™ or HD-6G/HD-EX HDD. For more information, see the Storage Manager Guide on the CD-ROM or go to the Brother solutions web site at <http://solutions.brother.com>

Analysis Tool Software



For departmental or individual cost tracking, install an optional Compact Flash™ or HD-6G/HD-EX HDD into the printer and use the Analysis Tool software to calculate analysis and printer usage trends.

Internet Printing



Save on communications costs using the IPP protocol or Brother's BIP software to send print jobs from your Windows PC over the Internet directly to a Brother network ready printer. For more information, see Chapter 5 of the Network User's Guide (on the CD-ROM) or go to the Brother Solutions web site at <http://solutions.brother.com>