

# Driver Installation Guide

## Windows® For non-Network Users

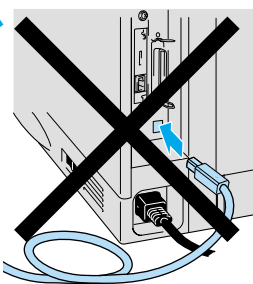
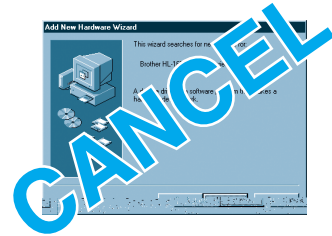
- Follow the instructions in this guide for your interface cable.
- Some illustrations are based on the HL-1870N.

Steps 1 to 4 Follow these steps in the Quick Setup Guide first.

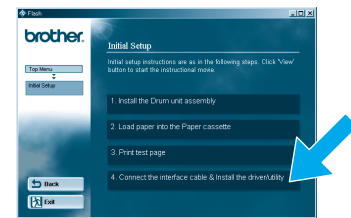
LJ5996001 Printed in China

### For USB Interface Cable Users Only

#### Step 5 Install the Driver & Connect the Printer to Your PC



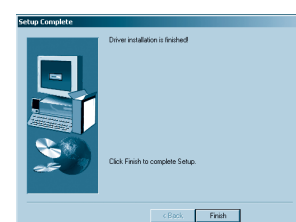
**Note:** When the "Add New Hardware Wizard" appears on your PC, click the Cancel button.  
**Note:** Make sure the USB interface cable is **NOT** connected to the printer, and then begin installing the driver. If you have already connected the cable, remove it.



1 Click "Connect the interface cable & Install the driver/utility."



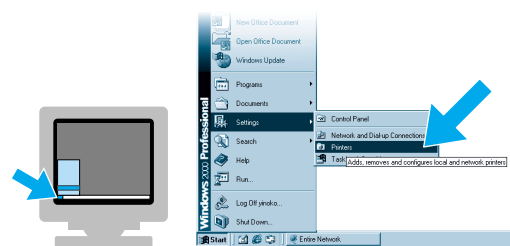
4 Follow the instructions on the screen.



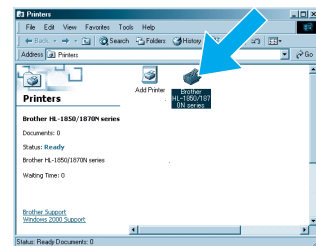
6 Click the Finish button.  
**The setup is now complete.\*1**

\*1 Please follow the steps below when the printer is not set as the default printer.

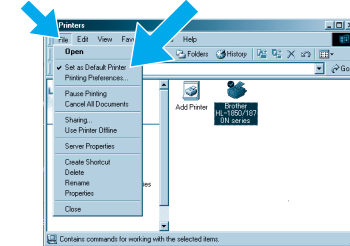
#### Note: Setting Your Printer as the Default Printer (For Windows® 2000/XP Users Only)



1 Click Start, Setting and Printers.



2 Select the Brother HL-1850 or HL-1870N icon.



3 From the File menu, select Set as Default printer.

### For Parallel Interface Cable Users Only

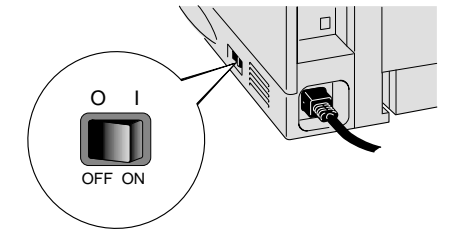
#### Step 5 Connect the Printer to Your PC & Install the Printer Driver



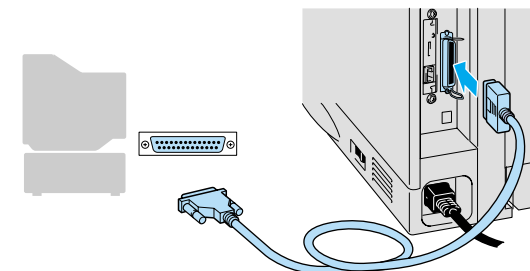
1 Click "Connect the interface cable & Install the driver/utility."



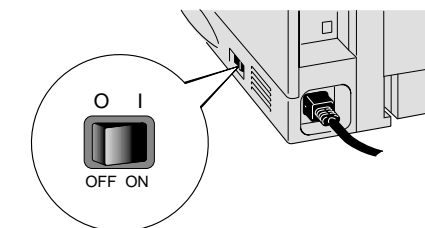
2 Select the Parallel interface cable.



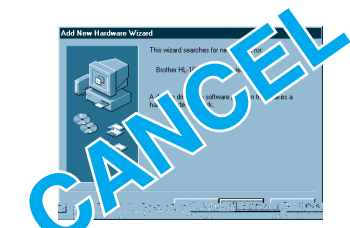
3 Turn off the printer power switch.



4 Connect the parallel interface cable to your PC, and then connect it to the printer.



5 Turn on the printer power switch.



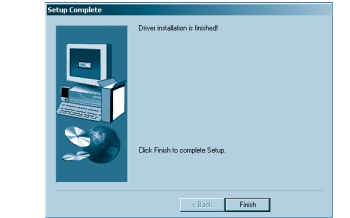
**Note:** If the "Add New Hardware Wizard" appears on your PC, click the Cancel button.



6 Click the Install button.

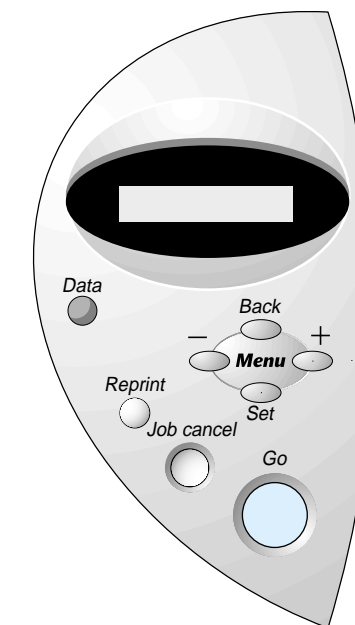


7 Follow the instructions on the screen.



8 Click the Finish button.  
**The setup is now complete.**

### Control Panel



#### Data LED : Orange

On	Data remains in the printer buffer.
Blinking	Receiving or processing data.
Off	No remaining data.

#### Buttons

Go	Exit from the control panel menu, Reprint settings or clear error messages. Pause / Continue printing.	
Job Cancel	Stop and cancel the printer operation in progress.	
Reprint	Select the Reprint menu.	
Menu	+	Move forward through menus.
	-	Move backward through menus.
	Set	Select the control panel menu. Set the selected menu and settings.
Back	Go back one level in the menu structure.	

#### Language Setting (Default is English)

1. Select the **SETUP** mode by pressing the **+** button, and then press the **Set** button.
  2. Check that the **LANGUAGE** message appears, and then press the **Set** button.
  3. Choose your language by pressing the **+** or **-** button, and then press the **Set** button. An asterisk mark (\*) appears at the end of the display.
- (You can return to the **READY** status by pressing the **Go** button.)

**Note** Please enhance the RAMDISK size when you want to use the Reprint functions without the optional HDD or CompactFlash. See "RAM expansion" in Chapter 4 of the User's Guide on the supplied CD-ROM.

For more information, see "CONTROL PANEL" in Chapter 3 of the User's Guide on the supplied CD-ROM.

# Driver Installation Guide

## Windows® For Network Users

- For HL-1850 users: If you are going to connect the printer to your network, purchase the optional Network board (NC-4100h).
- Before you continue, please ensure that the administrator has configured the network printer settings correctly referring to the **Network Quick Setup Guide**.
- Follow the instructions in this guide for your network type and operating system.
- Some illustrations are based on the HL-1870N.

### Steps 1 to 4 Follow these steps in the Quick Setup Guide first.

## For All Network Users

### Step 5 Connect the Printer to Your Network & Install the Driver

- 1 Click "Connect the interface cable & Install the driver/utility."
- 2 Select the Network interface cable.
- 3 Turn off the printer power switch.
- 4 Connect the network interface cable to the printer, and then connect it to a free port on your hub.
- 5 Turn on the printer power switch.
- 6 Click the Install button.
- 7 Follow the instructions on the screen.
- 8 Select "Network Shared Printer" or "Brother Peer-to-Peer Network Printer," and then click the Next button.

\*1 Follow the instructions for the appropriate network connection style and your operating system.

### For Network Shared Printer Users

### Step 6 Select the Appropriate Printer Queue or 'Sharename'

- 1 Select your printer's queue, and then click the OK button.
- 2 When the appropriate queue is specified, the printer driver will be installed.

The setup is now complete.

### For Brother Peer-to-Peer Network Printer Users (LPR- Recommended Peer-to-Peer Printing Method)

### Step 6 Configuring the LPR Port For Windows® 95/98/Me Users Only

- 1 Select "LPR (Recommended)," and then click the Next button.
- 2 Enter your unique port name (ex. **BLP1**), and then click the OK button.
- 3 Specify your printer's IP Address (or click the Browse button to see a list of printers), and then click the OK button.
- 4 Click the Finish button to restart your PC. After your PC has restarted, setup will be complete.

### For Windows NT® 4.0 Users Only

- 1 Select "LPR (Recommended)," and then click the Next button.
- Note: If this screen appears, insert the Windows NT® 4.0 CD-ROM into your CD-ROM drive.
- 2 Enter your printer's IP Address and the queue name **BINARY\_P1**, and then click the OK button.
- 3 Click the Finish button to restart your PC. After your PC has restarted, setup will be complete.

### For Windows® 2000 Users Only

- 1 Select "LPR (Recommended)," and then click the Next button.
- 2 Click the Next button.
- 3 Enter your printer's IP Address and your unique port name, and then click the Next button.
- 4 Click the Finish button, and then click the OK button. Click the Finish button again to restart your PC.
- 5 After your PC has restarted, click **Start, Settings and Printers**.
- 6 Select the Brother HL-1850 or Brother HL-1870N icon. From the File menu, select **Properties** to open the driver properties.
- 7 Click the **Configure Port...** button in the Ports tab.
- 8 Select "LPR" on protocol, and then click the OK button. Close the driver properties.

The setup is now complete.

### For Windows® XP Users Only

- 1 Select "LPR (Recommended)," and then click the Next button.
- 2 Click the Next button.
- 3 Enter your printer's IP Address and your unique port name, and then click the Next button.
- 4 Click the Finish button.
- 5 Click the OK button. Click the Finish button to restart your PC. After your PC has restarted, setup will be complete.

### For Brother Peer-to-Peer Network Printer Users (NetBIOS)

### Step 6 Configuring the NetBIOS Port

- 1 Select "NetBIOS," and then click the Next button.
- 2 Enter your unique port name (ex. **BNT1**), and then click the OK button.
- 3 Enter the path name (or click the Browse... button to see a list of printers), and then click the OK button.
- 4 Click the Finish button to restart your PC. After your PC has restarted, setup will be complete.