

brother Laser Printer HL-1470N

# Quick Network Setup Guide

Follow the instructions for Setting Up the Printer in the "Quick Setup Guide" first.

- If you are going to connect the printer to a network, we recommend you contact your system administrator prior to installation.
- If you are an Administrator: Configure your printer referring to the following instructions.
- If you are installing the driver on your PC, refer to the reverse side of this sheet after the administrator has configured the printer.

LJ5745001 Printed in China

## For the Administrator (For Windows® users only)

### Install the BRAdmin Professional Configuration utility

Use the BRAdmin Professional utility to configure the network parameters of Brother network connected printers.



- 1 Insert the CD-ROM.
- 2 Select the HL-1470N model button, and then select the appropriate language.
- 3 Click the Install Software icon.
- 4 Select BRAdmin Professional. Install the BRAdmin Professional utility referring to the on-screen instructions.

### Driver Deployment Wizard

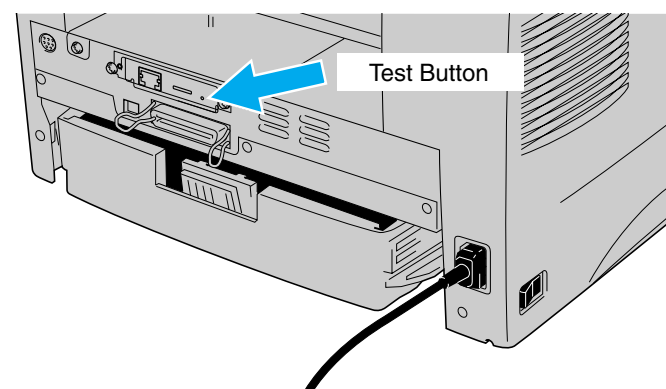
The Driver Deployment Wizard can be used to help with the installation of locally or network connected Brother printers. It can also create self running executable files that automate the installation and configuration of Brother printer drivers onto locally or network connected Windows® systems.

To access the Driver Deployment Wizard, insert the CD-ROM supplied with the printer, click the Install Software icon, and then select the Driver Deployment Wizard.



### Print configuration page

To print a configuration page, use a fine ball point pen to hold down the Network Test Button for less than 5 seconds.



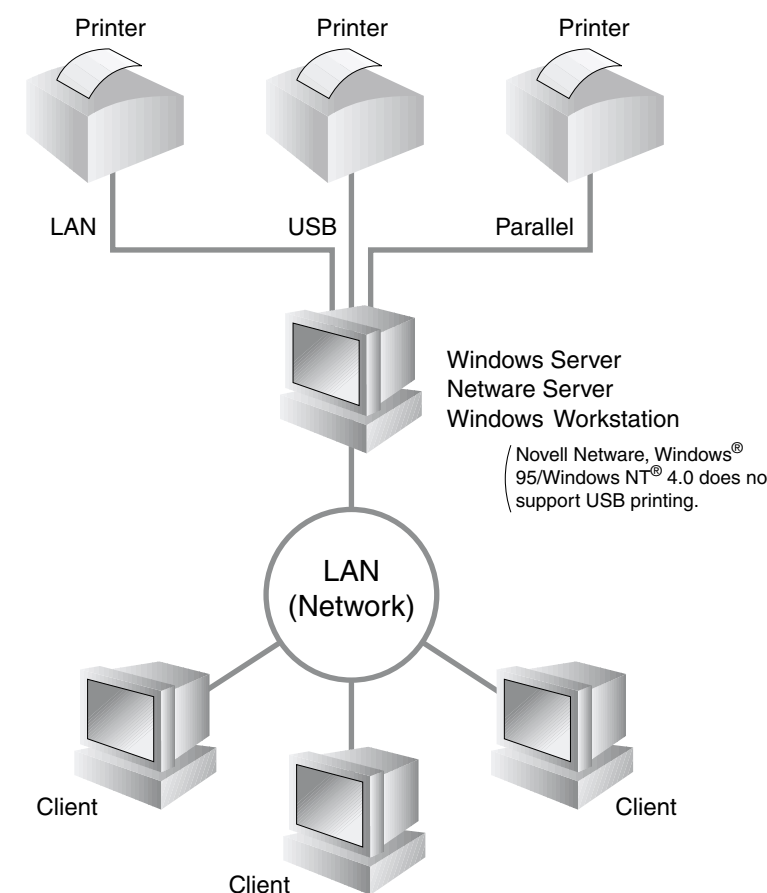
### Factory default setting

If you wish to reset the print server back to its default factory settings (resetting all information such as the password and IP address information), use a fine ball point pen to hold down the Network Test Button for more than 5 seconds.

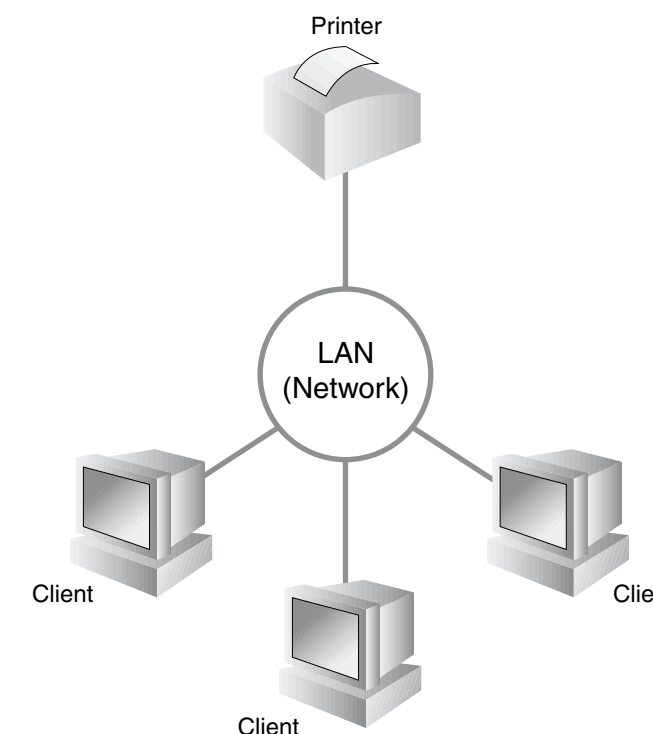
## Type of Network Printer

An example of a **Shared printer**\*1, printing through a queue, or sharename.

\*1 A shared printer can be seen in the Network Neighborhood.



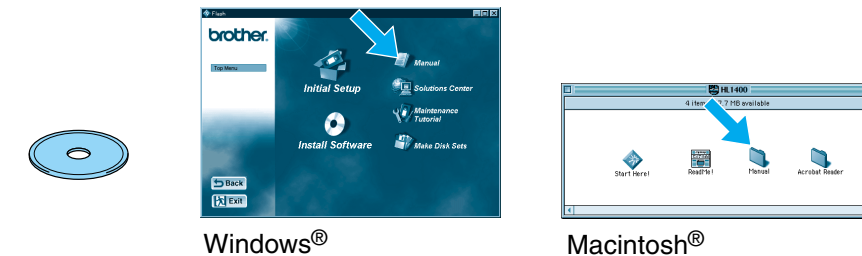
An example of a printer in a **Peer-to-Peer** network.



## Network Guide Chapter Map

To configure the print server refer to the Network Guide

To access the Network Guide, insert the CD-ROM supplied with the printer, click the Manual icon, and then select the Network Guide.



Windows® 95/98/Me	Peer-to-Peer	TCP/IP	Chapter 3	Peer-to-Peer Printing
	Brother Internet Print	NetBIOS	Chapter 4	NetBIOS Peer-to-Peer Printing
	Netware	TCP/IP	Chapter 5	How to Configure Internet Printing
Windows NT®	Peer-to-Peer	IPX/SPX	Chapter 6	Novell Network Printing
		TCP/IP	Chapter 2	TCP/IP Printing
		NetBIOS	Chapter 4	NetBIOS Peer-to-Peer Printing
Windows® 2000		DLC/LLC	Chapter 8	DLC Printing
	Brother Internet Print (NT® 4.0 only)	TCP/IP	Chapter 5	How to Configure Internet Printing
	Netware	IPX/SPX	Chapter 6	Novell Network Printing
UNIX/Linux	Peer-to-Peer	TCP/IP	Chapter 2	TCP/IP Printing
		NetBIOS	Chapter 4	NetBIOS Peer-to-Peer Printing
		DLC/LLC	Chapter 8	DLC Printing
Macintosh®	Brother Internet Print	TCP/IP	Chapter 5	How to Configure Internet Printing
	Netware	IPX/SPX	Chapter 6	Novell Network Printing
		TCP/IP	Chapter 2	TCP/IP Printing
OS2 Warp Server	Peer-to-Peer	TCP/IP	Chapter 2	TCP/IP Printing
		NetBIOS	Chapter 4	NetBIOS Peer-to-Peer Printing
		DLC/LLC	Chapter 8	DLC Printing
LAN Server	Brother Internet Print	TCP/IP	Chapter 5	How to Configure Internet Printing
	Netware	IPX/SPX	Chapter 6	Novell Network Printing
		TCP/IP	Chapter 2	TCP/IP Printing
Web Browser Management Function	Peer-to-Peer	TCP/IP	Chapter 2	TCP/IP Printing
		NetBIOS	Chapter 4	NetBIOS Peer-to-Peer Printing
		DLC/LLC	Chapter 8	DLC Printing
BRAdmin Professional	Brother Internet Print	TCP/IP	Chapter 5	How to Configure Internet Printing
	Netware	IPX/SPX	Chapter 6	Novell Network Printing
		TCP/IP	Chapter 2	TCP/IP Printing

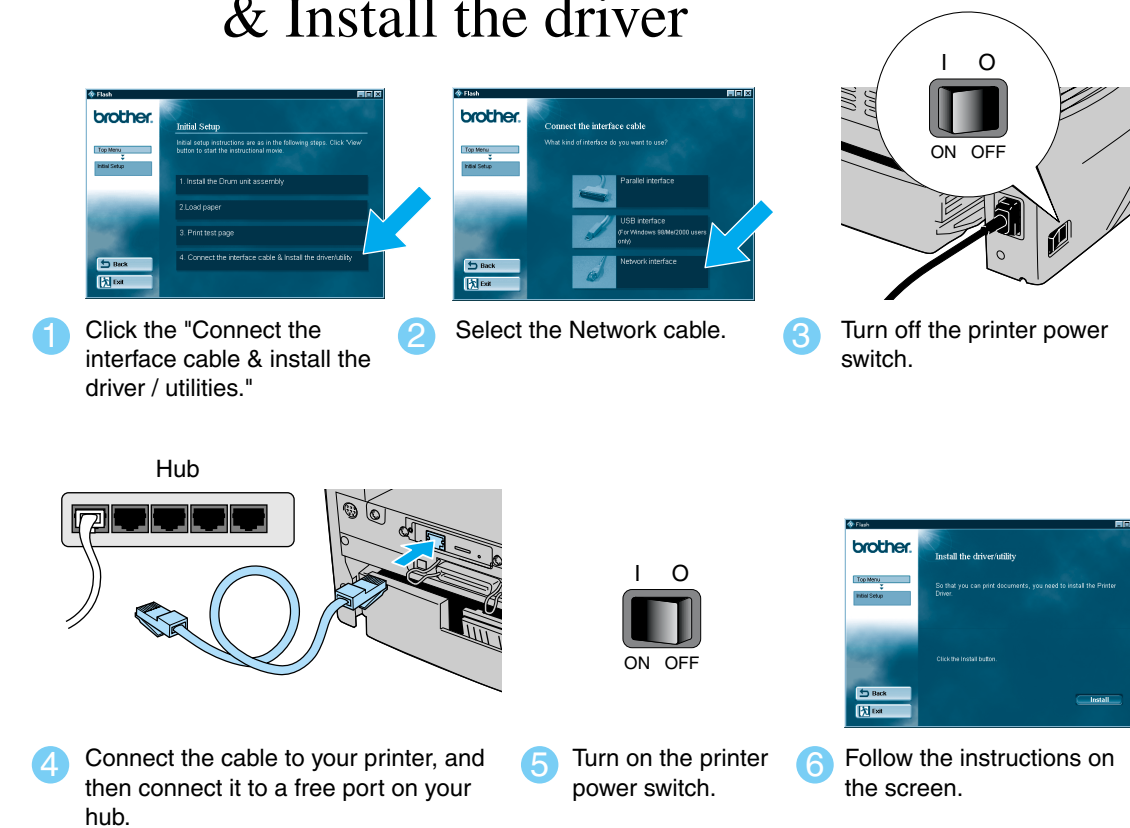
# Installing the Driver for Network Users

Before you continue, please ensure that the administrator has configured the network printer settings correctly.

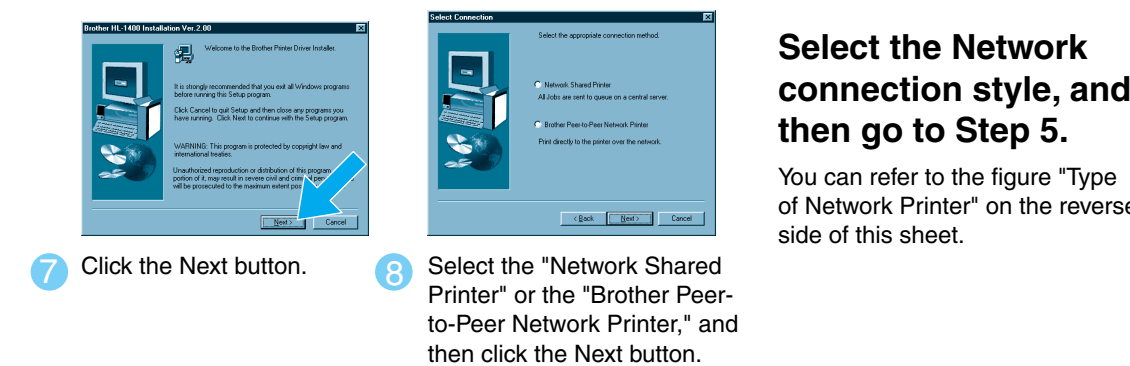
Follow the steps in the **Quick Setup Guide** before proceeding.

## For Windows® users only

### Step 4 Connect the printer to Your Network & Install the driver



- Click the "Connect the interface cable & install the driver / utilities."
- Select the Network cable.
- Turn off the printer power switch.
- Connect the cable to your printer, and then connect it to a free port on your hub.
- Turn on the printer power switch.
- Follow the instructions on the screen.



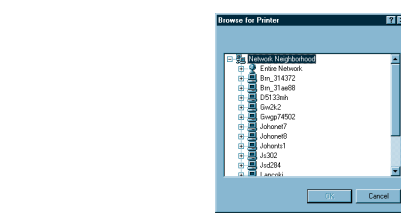
- Click the Next button.
- Select the "Network Shared Printer" or the "Brother Peer-to-Peer Network Printer," and then click the Next button.

**Select the Network connection style, and then go to Step 5.**

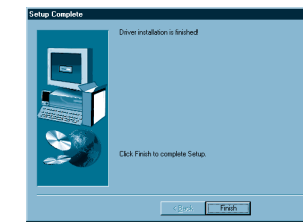
You can refer to the figure "Type of Network Printer" on the reverse side of this sheet.

For Network shared printer users

### Step 5 Select the appropriate printer Queue or 'Sharename'



1 Select your printer's queue, and then click the OK button.



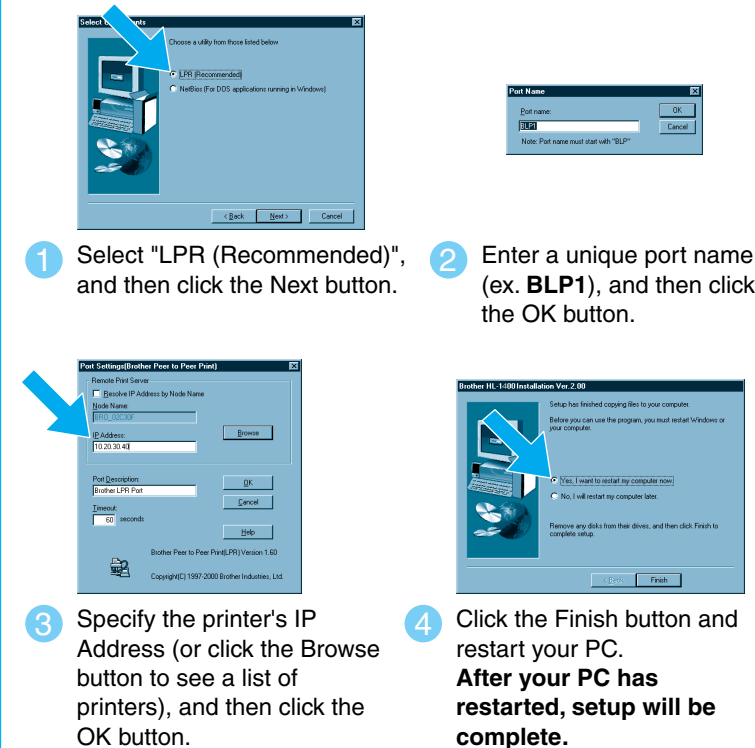
2 Once the appropriate queue is specified, the printer driver will be installed.

The setup is now complete.

For Brother Peer-to-Peer network printer users (LPR- Recommended Peer-to-Peer printing method)

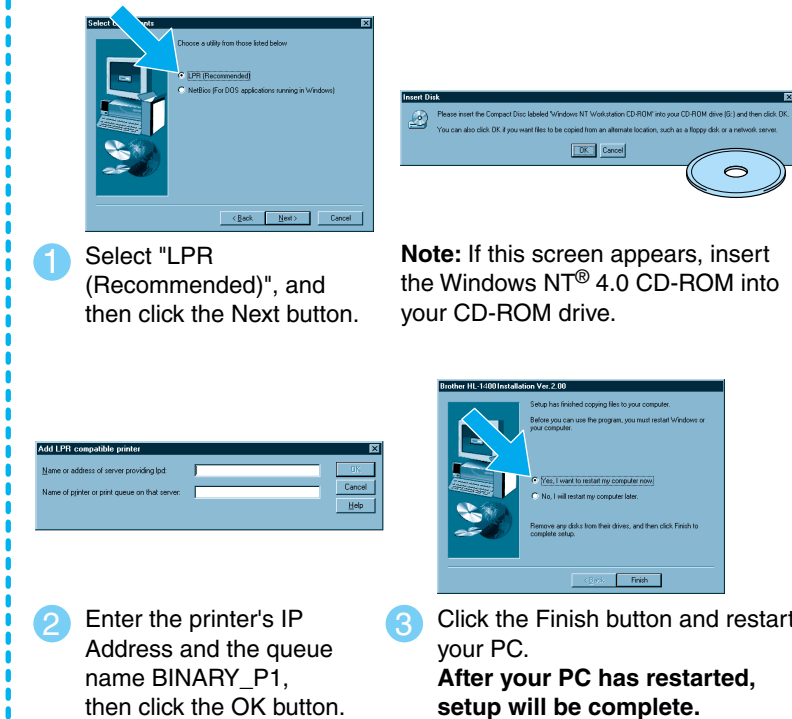
### Step 5 Configuring the LPR port

For Windows® 95/98/Me users only



- Select "LPR (Recommended)", and then click the Next button.
- Enter a unique port name (ex. **BLP1**), and then click the OK button.
- Specify the printer's IP Address (or click the Browse button to see a list of printers), and then click the OK button.
- Click the Finish button and restart your PC. **After your PC has restarted, setup will be complete.**

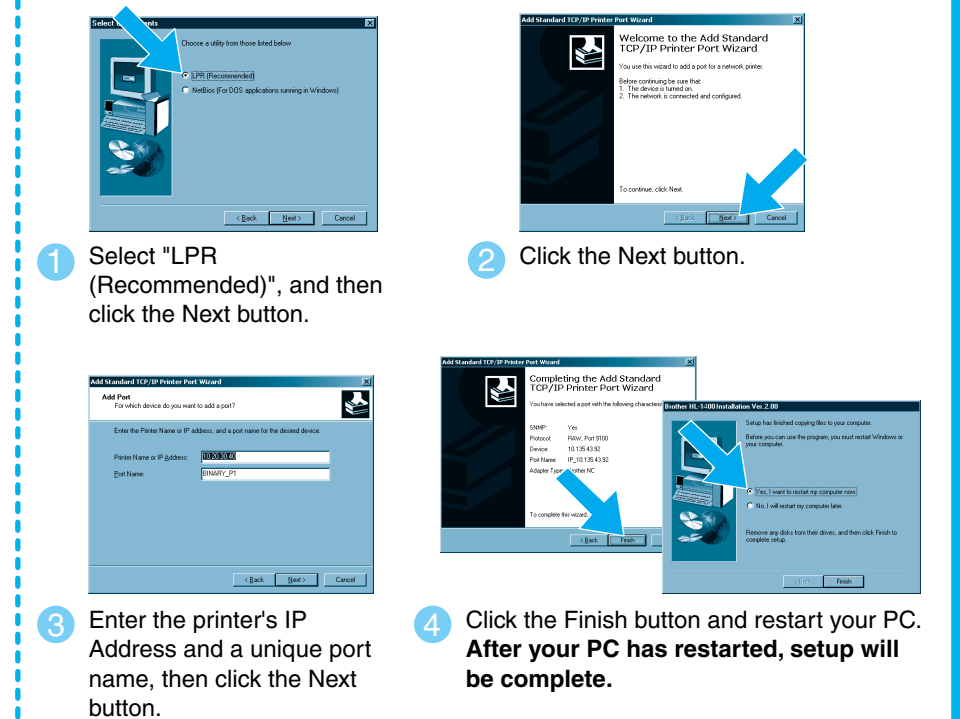
For Windows NT® 4.0 users only



- Select "LPR (Recommended)", and then click the Next button.
- Enter the printer's IP Address and the queue name **BINARY\_P1**, then click the OK button.
- Click the Finish button and restart your PC. **After your PC has restarted, setup will be complete.**

**Note:** If this screen appears, insert the Windows NT® 4.0 CD-ROM into your CD-ROM drive.

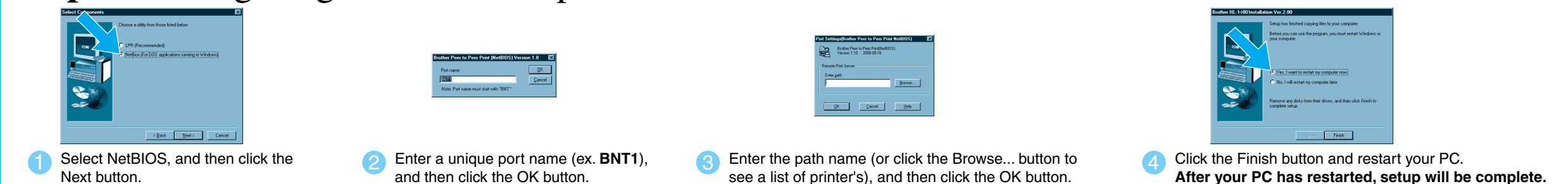
For Windows® 2000 users only



- Select "LPR (Recommended)", and then click the Next button.
- Click the Next button.
- Enter the printer's IP Address and a unique port name, then click the Next button.
- Click the Finish button and restart your PC. **After your PC has restarted, setup will be complete.**

For Brother Peer-to-Peer network printer users (NetBIOS)

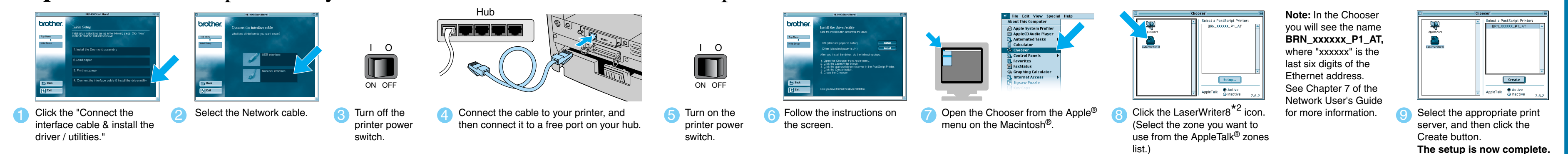
### Step 5 Configuring the NetBIOS port



- Select NetBIOS, and then click the Next button.
- Enter a unique port name (ex. **BNT1**), and then click the OK button.
- Enter the path name (or click the Browse... button to see a list of printer's), and then click the OK button.
- Click the Finish button and restart your PC. **After your PC has restarted, setup will be complete.**

## For Macintosh® users only

### Step 4 Connect the printer to your Macintosh® & Install the BR-Script PPD file



- Click the "Connect the interface cable & install the driver / utilities."
- Select the Network cable.
- Turn off the printer power switch.
- Connect the cable to your printer, and then connect it to a free port on your hub.
- Turn on the printer power switch.
- Follow the instructions on the screen.
- Open the Chooser from the Apple® menu on the Macintosh®.
- Click the LaserWriter8\*2 icon. (Select the zone you want to use from the AppleTalk® zones list.)
- Select the appropriate server, and then click the Create button. **The setup is now complete.**

\*2 If the Apple® LaserWriter8 Driver is not installed on your system, you can download it from <http://www.apple.com>.

**Note:** In the Chooser you will see the name **BRN\_XXXXX\_P1\_AT**, where "XXXXXX" is the last six digits of the Ethernet address. See Chapter 7 of the Network User's Guide for more information.