

Quick Setup Guide

Read the "Safety Sheet" first to ensure that you use this printer safely.

Read this "Quick Setup Guide" before you set up the printer.

Before you can use the printer, you must set up the hardware and install the driver.

■ Identify the operating system on your computer (Windows® 95 / 98 / Me, Windows NT® 4.0, Windows® 2000 or Macintosh®).

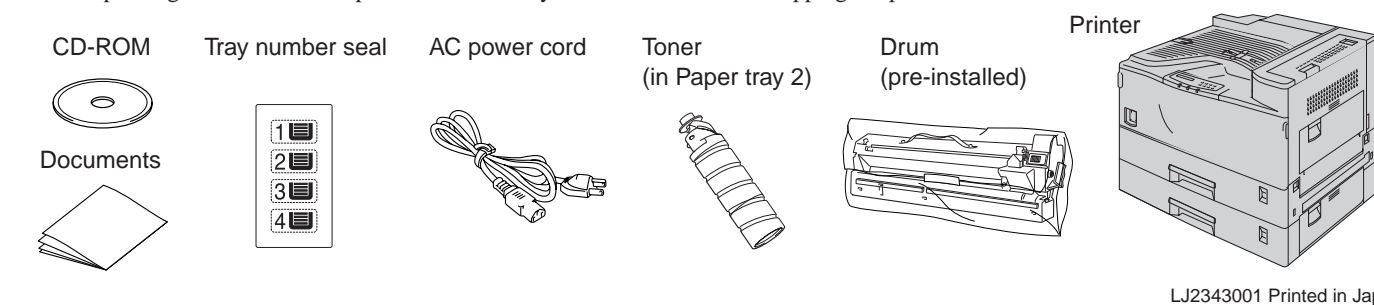
■ The interface cable is not a standard accessory. Please purchase the appropriate interface cable for the interface you intend to use (parallel or Network). Most existing parallel cables support bi-directional communication, but some might have an incompatible pin assignment or may not be IEEE 1284 compliant.

■ Follow the instructions in this guide for your operating system and interface.

Carton components

Carton components may differ from one country to another.

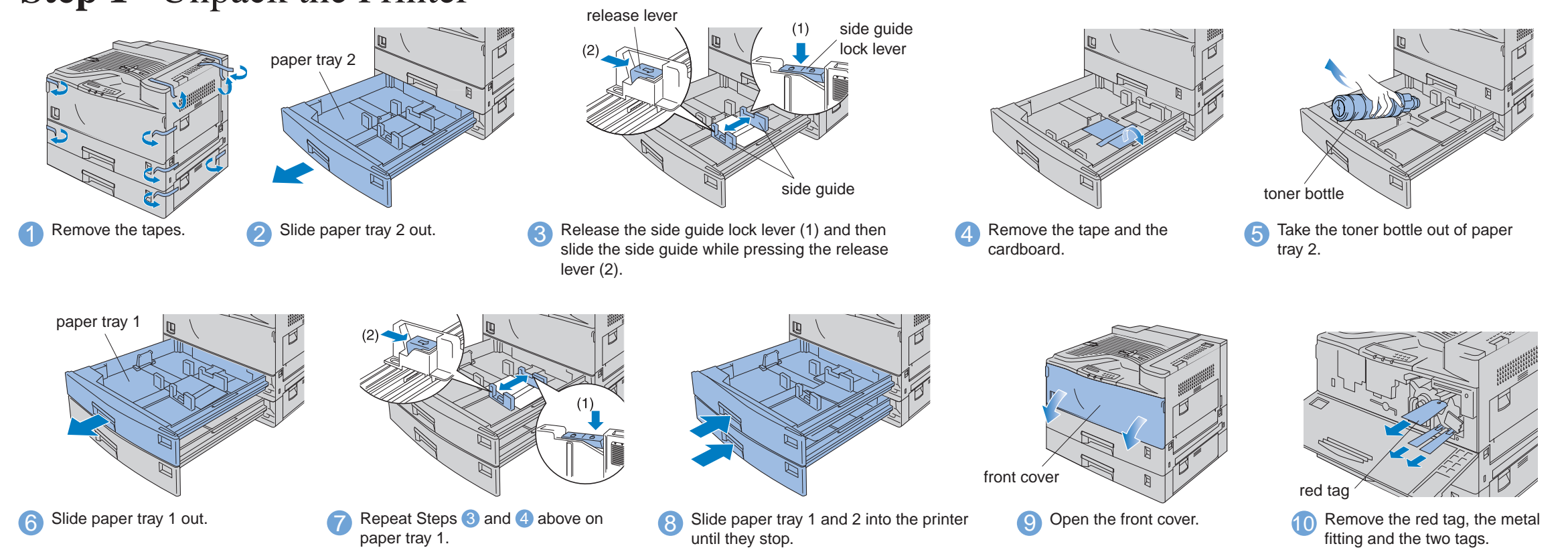
Save all packing materials and the printer carton. They should be used when shipping the printer.



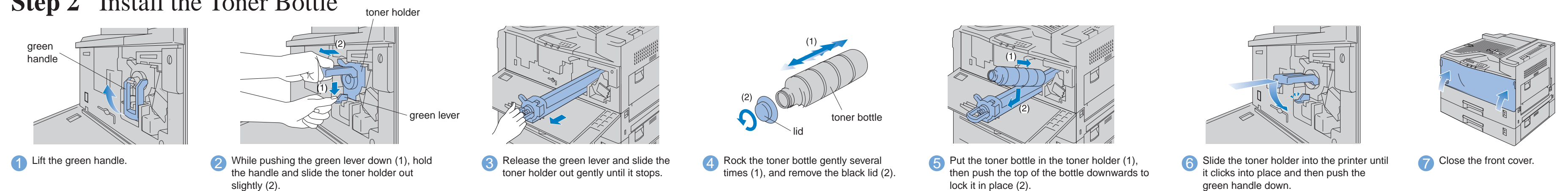
LJ2343001 Printed in Japan

Set up the printer

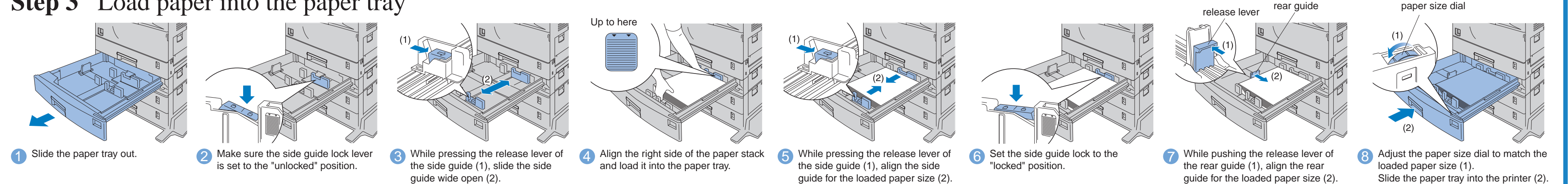
Step 1 Unpack the Printer



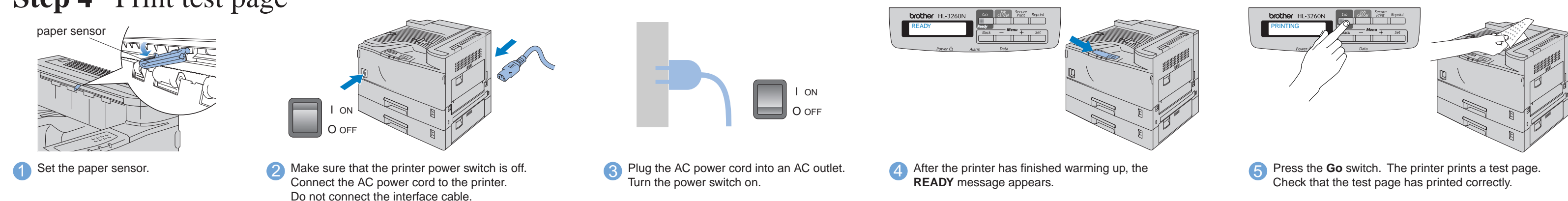
Step 2 Install the Toner Bottle



Step 3 Load paper into the paper tray



Step 4 Print test page



Note: When you want to set the Control Panel message language, refer to the Control Panel section on the reverse side of this sheet.

Continue to the reverse side.

Follow the instructions for your interface cable and operating system.

Insert the CD-ROM and see the main menu screen

For Windows® users only



- 1 Insert the CD-ROM into the CD-ROM drive. The opening screen will appear automatically.




- 2 Select the language you want.

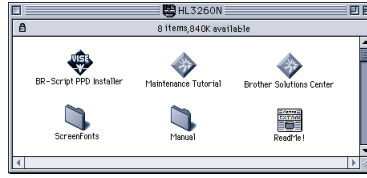


- 3 You can get a variety of information from this CD-ROM.

For Macintosh® users only




- 1 Insert the CD-ROM into the CD-ROM drive.



- 2 You can get a variety of information from this CD-ROM.

What is included on the CD-ROM



Windows®

Install Software (only for Windows®)
You can install not only the printer driver but also the following utility items.

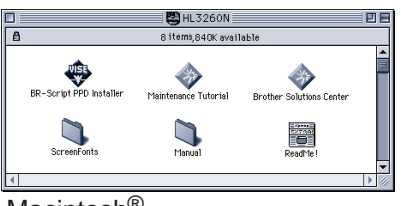
For all users
-Printer Driver
-Automatic E-mail Printing

For administrators
-BRAdmin Professional
-Network Printer Driver Wizard
-Network Print Software
-Storage Manager
-Analysis Tool Software

BR-Script PPD Installer (only for Macintosh® with Network)

Manual
View the Printer User's Guide, Network User's Guide and other documentation.

Brother Solutions Center
Introduction to the Brother user support web page. You can easily access it and receive the latest drivers and information for this printer.



Macintosh®

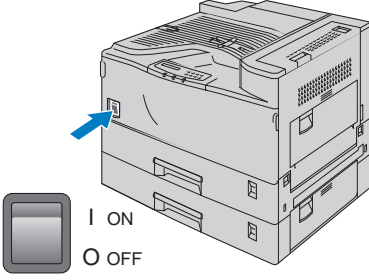
Maintenance Tutorial
See the maintenance videos for this printer. We recommend that you view the videos before getting started.

Make Disk Sets (only for Windows®)

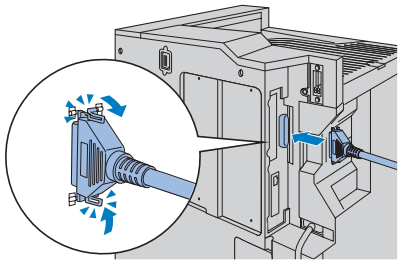
Screen Fonts
When you use BR-Script 3 (PostScript level 3 language emulation), you can use Agfa PostScript Fonts. We recommend that you install these fonts.

For Parallel interface users (For Windows® users only)


Step 5 Connect the Printer to your PC & Install the Driver



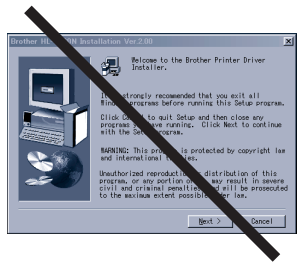
- 1 Turn the printer power switch off.



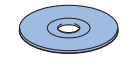
- 2 Connect the interface cable to your PC and then connect it to the printer.




- 3 Turn the printer and your PC power switch on.




Note: If the "Add New Hardware Wizard" appears, click the Cancel button.




- 4 Insert the CD-ROM into the CD-ROM drive. The opening screen will appear automatically.




- 5 Select the language you want.



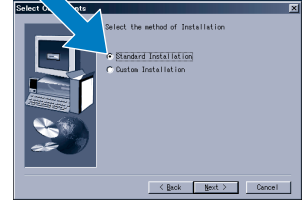
- 6 Click the Install Software icon in the menu screen.



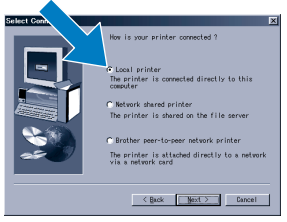
- 7 Click the "Printer Driver" Install button.



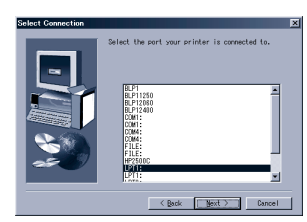
- 8 Click the Next button.



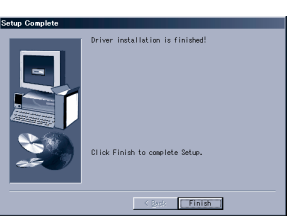
- 9 Select "Standard installation" and click the Next button.



- 10 Select "Local printer" and click the Next button.



- 11 Select the port your printer is connected to and then click the Next button.



- 12 Click the Finish button.

The setup is now complete.

For Network users

If you want to connect your printer using a Network cable, refer to the **Quick Network Setup Guide**. After the administrator has made the required settings, install the driver referring to the "Installing the driver" section of the **Quick Network Setup Guide**.

Control Panel

For more information, see Chapter 3 "CONTROL PANEL" in the User's Guide.

Note

1. A real time clock is built into this printer. Set the time referring to Chapter 3 of the User's Guide on the CD-ROM.
You need to set the time before you can use the log management and reprint functions.
2. Please enhance the RAMDISK size when you want to secure print without the optional HDD or CompactFlash.
See RAM expansion in Chapter 4 of the User's Guide.



LED	
READY (Green)	Lights when the printer is ready to print or printing.
POWER (Green)	Lights when the printer is in the on-line state.
ALARM (Red)	Lights when the printer has a problem (Operator Call, Error, Service Error) and suspends printing.
DATA (Orange)	Lights when data remains in the printer buffer. Blinks when the printer is receiving or processing the data.
Switches	
Go	Exit from the Control panel menu, Reprint settings and clear Error Messages. Pause / Continue printing.
Job Cancel	Stop and cancel the printer operation in progress.
Secure Print	Print secure documents.
Reprint	Select the Reprint menu.
Menu	+ — Move forward and backward through menus. Move forward and backward through selectable options.
	Set — Select the Control panel menu. Set the selected menus and the settings.
	Back — Go back one level in the menu structure.

Language Setting (Default setting is English)

1. Select the **SETUP** mode by pressing the **+** switch, and press the **Set** switch.
2. Check that the **LANGUAGE** message appears, and press the **Set** switch.
3. Choose your language by pressing the **+** or **-** switch, and press the **Set** switch.
An asterisk mark (*) appears at the end of the display.
(You can return to the **READY** status by pressing the **Go** switch.)