

# Quick Network Setup Guide

Follow the instructions for Setting Up the Printer in the "Quick Setup Guide" first.

- If you are going to connect the printer to a network, we recommend you contact your system administrator prior to installation.
- If you are an Administrator: Configure your printer referring to the following instructions.
- If you are installing the driver on your PC refer to the reverse side of this sheet once the administrator has configured the printer.

LJ2755001 Printed in Japan

## For the Administrator (For Windows® users only)

### Install the BRAdmin Professional Configuration utility

The BRAdmin Professional software provides sophisticated network and printer management capabilities for Brother products. By identifying potential problems before they arise, and by addressing important IT requirements such as streamlined printer configuration, mass configuration and enterprise-wide upgrades, the BRAdmin Professional software plays an important role in Printer network management.

- 1 Insert the CD-ROM.
- 2 Select the appropriate language.
- 3 Click the Install Software icon.
- 4 Select BRAdmin Professional. Install the BRAdmin Professional utility referring to the on-screen instructions.

### Network Printer Driver Wizard: Useful Utility for Peer-to-Peer users

Use the Brother Network Printer Driver Wizard software to automate the installation of Brother networked printers in a TCP/IP environment. The Wizard can create an Executable file that can be sent to other network users. When run, the Executable file installs the appropriate printer driver and network printing software directly on the remote PC.

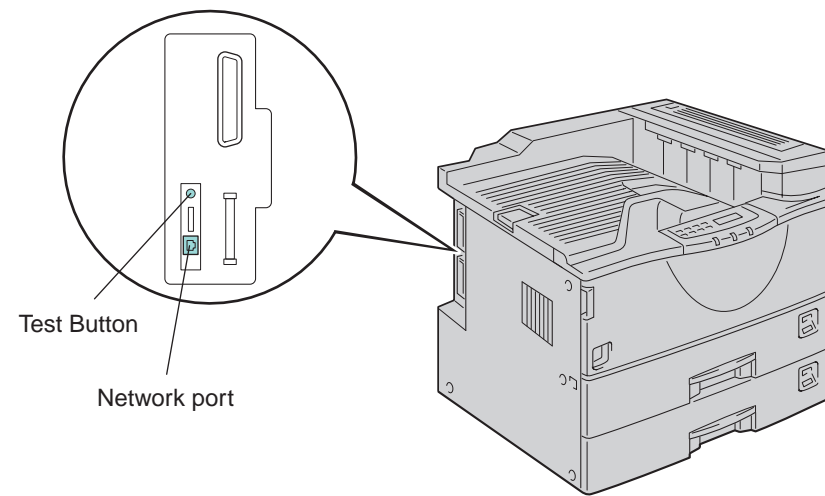
To access the Network Printer Driver Wizard, insert the CD-ROM supplied with the printer, click the Install Software icon and select the Network Printer Driver Wizard.

### Print Configuration page

Press the Network Test Button for less than 5 seconds to print a configuration page.

### Factory default setting

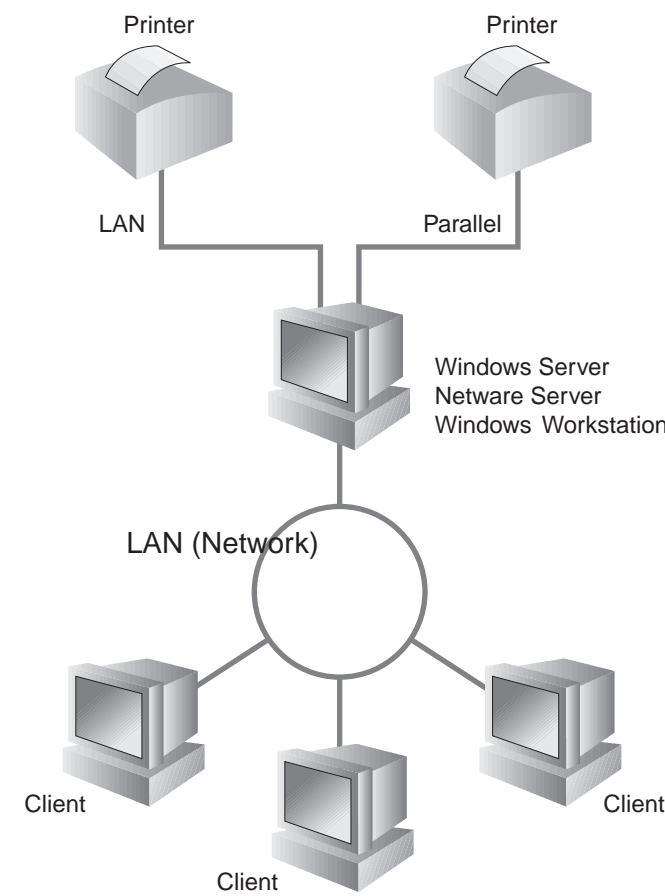
If you wish to reset the print server back to its default factory settings (resetting all information such as the password and IP address information) hold down the Network Test Button for more than 5 seconds.



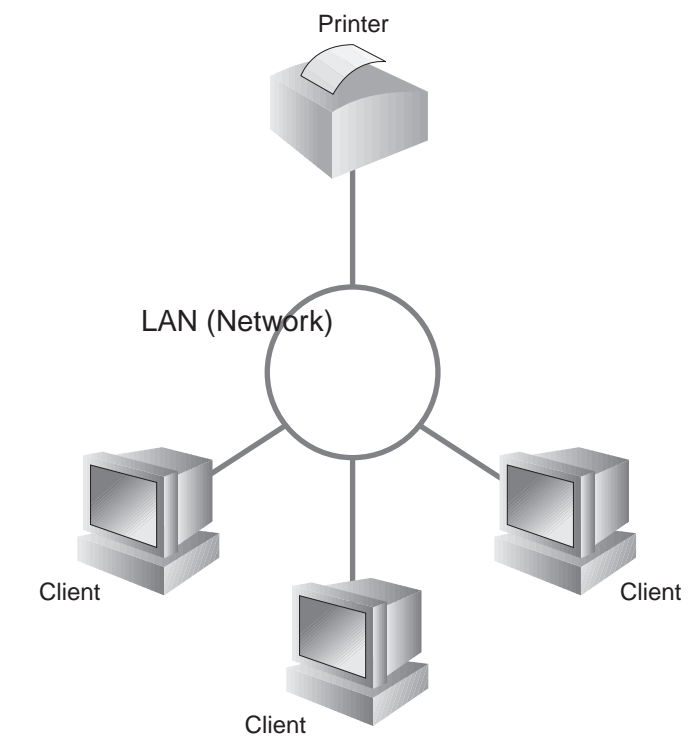
## Type of Network Printer

An example of a **Shared printer**\*1, printing through a queue, or sharename.

\*1 A shared printer can be seen in the Network Neighborhood.



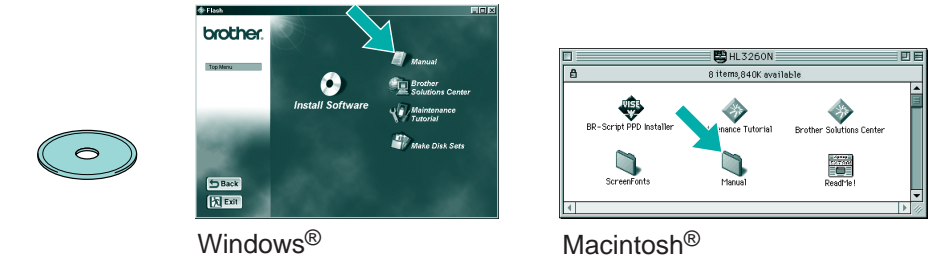
An example of a printer in a **Peer-to-Peer** network.



## Network Guide Chapter Map

To configure the print server refer to the Network Guide

To access the Network Guide, insert the CD-ROM supplied with the printer, click the Manual icon and select the Network Guide.



Windows® 95/98/Me	Peer-to-Peer	TCP/IP	Chapter 3	Peer-to-Peer Printing
	Brother Internet Print	NetBIOS	Chapter 4	NetBIOS Peer-to-Peer Printing
	Netware	TCP/IP	Chapter 5	How to Configure Internet Printing
Windows NT®	Peer-to-Peer	IPX/SPX	Chapter 6	Novell Network Printing
	Peer-to-Peer	TCP/IP	Chapter 2	TCP/IP Printing
		NetBIOS	Chapter 4	NetBIOS Peer-to-Peer Printing
Windows® 2000	Peer-to-Peer	DLC/LLC	Chapter 8	DLC Printing
		Brother Internet Print (NT® 4.0 only)	TCP/IP	Chapter 5
	Peer-to-Peer	Netware	IPX/SPX	Chapter 6
Peer-to-Peer		TCP/IP	Chapter 2	TCP/IP Printing
	Peer-to-Peer	NetBIOS	Chapter 4	NetBIOS Peer-to-Peer Printing
Peer-to-Peer		DLC/LLC	Chapter 8	DLC Printing
	Peer-to-Peer	IPP (Internet Printing Protocol)	TCP/IP	Chapter 2
Peer-to-Peer		Brother Internet Print	TCP/IP	Chapter 5
	Peer-to-Peer	Netware	IPX/SPX	Chapter 6
Peer-to-Peer		TCP/IP	Chapter 1	UNIX Printing
	Peer-to-Peer	AppleTalk	Chapter 7	Macintosh Printing
Peer-to-Peer		TCP/IP	Chapter 7	Macintosh Printing
	Peer-to-Peer	TCP/IP	Chapter 2	TCP/IP Printing
Peer-to-Peer		NetBIOS	Chapter 4	NetBIOS Peer-to-Peer Printing
	Peer-to-Peer	DEC_LAT	Chapter 9	LAT Network Configuration
Peer-to-Peer		VINES	Chapter 10	Banyan VINES Network Configuration
	Peer-to-Peer	Web Browser Management Function	TCP/IP	Chapter 11
Peer-to-Peer		BRAdmin Professional	TCP/IP	Chapter 12
	Peer-to-Peer	BRAdmin Professional	IPX/SPX	Chapter 12

# Installing the Driver for Network users

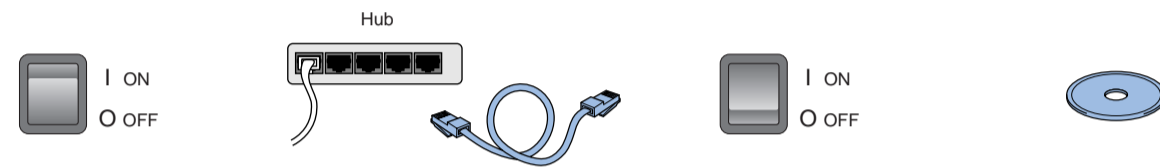
Before you continue, please ensure that the administrator has configured the network printer settings correctly.

## Step 1 to 4

Follow the instructions in the **Quick Setup Guide** first.

### For Windows® users only

#### Step 5 Connect the Printer to Your Network & Install the Driver



- 1 Turn the printer power switch off.
- 2 Connect the cable to your printer, and then connect it to a free port on your hub.
- 3 Turn the printer power switch on.
- 4 Insert the CD-ROM into the CD-ROM drive. The opening screen will appear automatically.



- 5 Select the language you want.



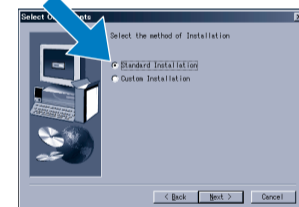
- 6 Click the Install Software icon in the menu screen.



- 7 Click the "Printer Driver" Install button.



- 8 Click the Next button.



- 9 Select "Standard installation" and click the Next button.

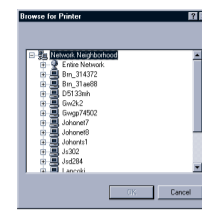


- 10 Select the "Network shared printer" or the "Brother peer-to-peer network printer", and then click the Next button.

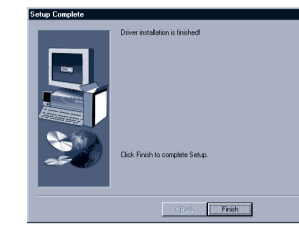
Select the Network connection style and go to Step 6. You can refer to the figure "Type of Network Printer" on the reverse side of this sheet.

### For Network shared printer users

#### Step 6 Select the appropriate printer Queue or 'Sharename'



- 1 Select your printer's queue, and then click the OK button.



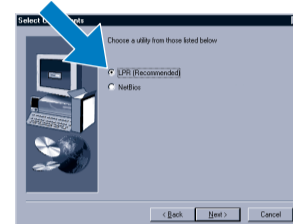
- 2 Once the appropriate queue is specified, the printer driver will be installed.

The setup is now complete.

### For Brother Peer-to-Peer network printer users (LPR- Recommended Peer to Peer printing Method)

#### Step 6 Configuring the LPR port

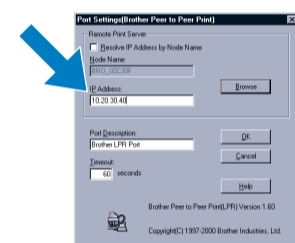
##### For Windows® 95/98/Me users only



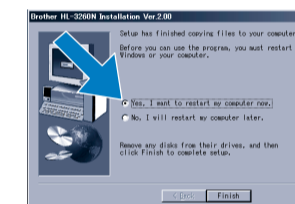
- 1 Select "LPR (Recommended)", and then click the Next button.



- 2 Enter a unique port name (ex. BLP1), and then click the Next button.

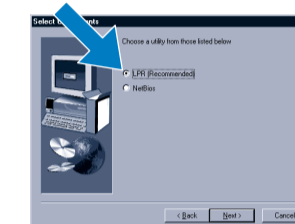


- 3 Specify the printer's IP Address (or click the Browse button to see a list of printers), and click the OK button.



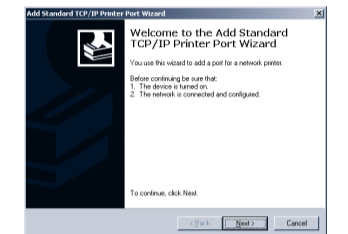
- 4 Click the Finish button and restart your PC. After your PC has restarted, setup is complete.

##### For Windows NT® 4.0/ Windows® 2000 users only

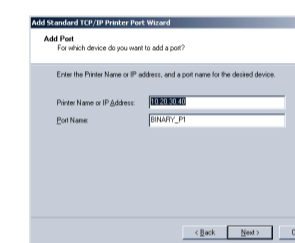


- 1 Select "LPR (Recommended)", and then click the Next button.

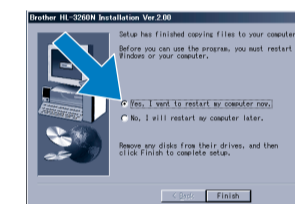
Note: If this screen appears, insert the Windows NT® 4.0 CD-ROM into your CD-ROM drive.



- 2 Click the next button.



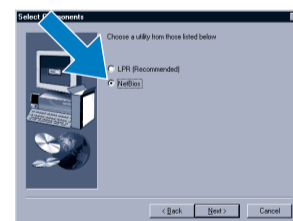
- 3 Enter the printer's IP Address and the port name BINARY\_P1, then click the OK button.



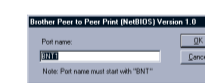
- 4 Click the Finish button and restart your PC. After your PC has restarted, setup is complete.

### For Brother Peer-to-Peer network printer users (NetBIOS)

#### Step 6 Configuring the NetBIOS port



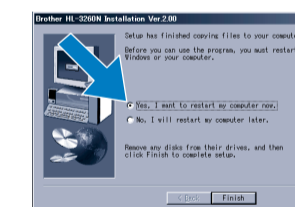
- 1 Select NetBIOS, and click the Next button.



- 2 Enter a unique port name (ex. BNT1), and then click the OK button.



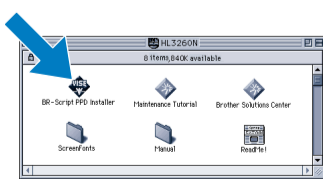
- 3 Enter the path name (or click the Browse button to see a list of printer's), and then click the OK button.



- 4 Click the Finish button and restart your PC. After your PC has restarted, setup is complete.

### For Macintosh® users only

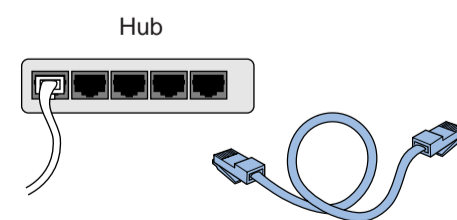
#### Step 5 Connect the Printer to your Macintosh® & Install the BR-Script PPD file



- 1 Double click the BR-Script PPD Installer icon and then follow the instructions on the screen.



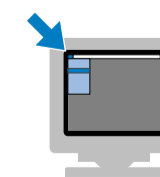
- 2 Turn the printer power switch off.



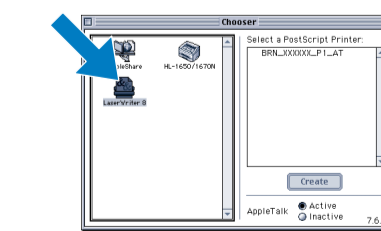
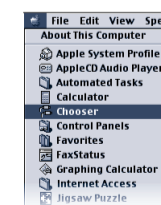
- 3 Connect the cable to your printer, and then connect it to a free port on your hub.



- 4 Turn the printer power switch on.

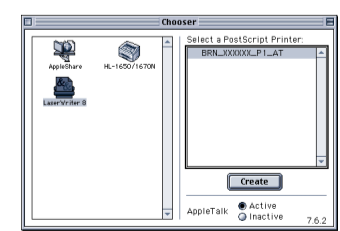


- 5 Open the Chooser from the Apple® menu on the Macintosh®.



- 6 Click the LaserWriter8 \*2 icon (if you need to change the network zone, select which zone you want to use from the AppleTalk® zones list).

Note: In the Chooser you will see the name BRN\_XXXXXX\_P1\_AT, where "XXXXXX" is the last six digits of the Ethernet address. See Chapter 7 of the Network User's Guide for more information.



- 7 Click on the appropriate print server, and close the Chooser. The setup is now complete.

\*2 If the Apple® LaserWriter8 Driver is not already installed on your system, you can download it from <http://www.apple.com>.