

MFC-8870DW

Windows Vista™ Installation Guide

Before you can use the machine, you must set up the hardware and install the driver. Please read the 'Quick Setup Guide' and this 'Windows Vista™ Installation Guide' for set up and installation instructions.

STEP 1

Setting Up the Machine

Please follow the steps in STEP 1 Setting Up the Machine in the Quick Setup Guide first. Then return to STEP 2 Installing the driver & software in this installation guide.



STEP 2



Installing the Driver & Software

Please follow the steps in this Windows Vista™ Installation Guide for driver & software installation instructions.



Setup is Complete!

Keep the 'Quick Setup Guide', 'Windows Vista™ Installation Guide' and the supplied CD-ROM in a convenient place for quick and easy reference at all times.



Before Starting

Before using this manual.....	2
Supplied CD-ROM for Windows Vista™	2
Symbols used in this guide	2

Installing the Driver & Software

For USB Interface Users	4
For Wired Network Interface Users.....	7
For Wireless Network Interface Users	11
Connecting your wireless machine and wireless network together in infrastructure mode and installing the printer driver in infrastructure mode	11
Using the SecureEasySetup™ software to configure your machine for a wireless network.....	13
Using the Setup Wizard from the control panel LAN menu for wireless network configuration	15

For Network Users

BRAdmin Light utility	21
Installing the BRAdmin Light configuration utility	21
Setting your IP address, Subnet Mask and Gateway using BRAdmin Light	21
How to set the machine's network settings to wireless LAN or wired LAN	22
Restoring the network settings to factory default	22
Entering Text.....	23

Other Information

ScanSoft™ PaperPort™ 11SE with OCR by NUANCE™	24
Computer requirements	25

Before using this manual

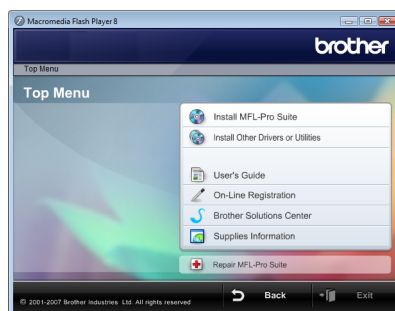
This manual is for Windows Vista™ users only. This installation guide explains how to install the MFL-Pro Suite software and multifunction drivers for Windows Vista™ and other information about Windows Vista™. Before installing the driver and software, please follow the steps in the **Getting Started** section and **STEP 1 Setting Up the Machine** in the Quick Setup Guide. After you complete the initial setup, follow the steps in this guide for installing the MFL-Pro Suite and drivers. You can also find other information about the machine in the Quick Setup Guide.



See the Quick Setup Guide first.

Supplied CD-ROM for Windows Vista™

You can find the information listed below on the Windows Vista™ CD-ROM.



Install MFL-Pro Suite

You can install the MFL-Pro Suite software and multifunction drivers.



Install Other Drivers or Utilities

You can install additional MFL-Pro Suite software utilities, install without ScanSoft™ PaperPort™ 11SE with OCR by NUANCE™, or install the printer driver only.



User's Guide

View the Software User's Guide and Network User's Guide (only available for models with built-in network) in HTML format or PDF format. You can also view the manuals in PDF format by accessing the Brother Solutions Center. The Software User's Guide includes instructions for features available when connected to a computer. (eg. Printing and scanning details)



On-Line Registration

Register your machine from the Brother Product Registration page.



Brother Solutions Center

Access the Brother Solutions Center for FAQs, User's Guide, driver updates and tips for using your machine. (Internet access required)



Supplies Information




View our web site for original/genuine Brother supplies at <http://www.brother.com/original/>.



Repair MFL-Pro Suite (USB only)

If an error occurred during the installation of the MFL-Pro Suite, use this selection to automatically repair and re-install the MFL-Pro Suite.

Symbols used in this guide

 Improper Setup	 Note	 Quick Setup Guide
Improper Setup icons alert you to devices and operations that are not compatible with the machine.	Notes tell you how you should respond to a situation that may arise or give tips about how the current operation works with other features.	Indicates reference to the Quick Setup Guide.

Follow the instructions on this page for the interface you are going to use.

For the latest drivers, documentation, and to find the best solution for your problem, access the Brother Solution Center directly from the CD-ROM / Driver or visit <http://solutions.brother.com>.

Windows®

For USB Interface Users 4



For Wired Network Interface Users 7

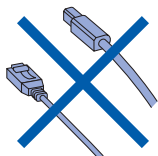


For Wireless Network Interface Users 11

For USB Interface Users

Improper Setup

DO NOT connect the interface cable.
Connecting the interface cable is done when installing the driver.

**Important**

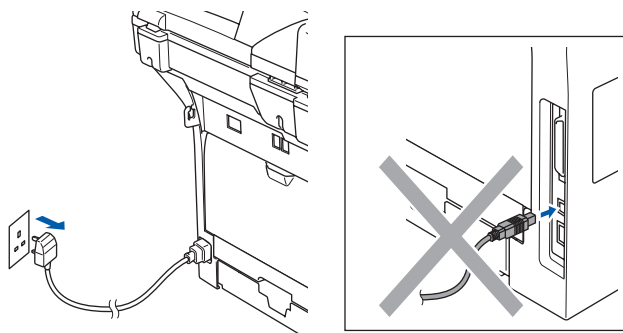
Make sure that you have finished the instructions from **STEP 1 Setting Up the Machine** in the Quick Setup Guide.

**Note**

Please close any applications running before installing MFL-Pro Suite.

Installing the driver and connecting the machine to your computer.

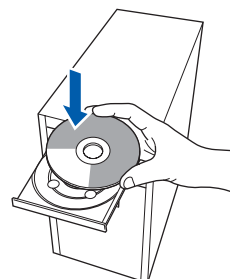
- 1 Disconnect the machine from the power socket and from your computer, if you already connected an interface cable.



- 2 Turn on your computer.
You must be logged on with Administrator rights.

3

Put the supplied CD-ROM for Windows Vista™ into your CD-ROM drive.
If the model name screen appears, choose your machine. If the language screen appears, choose your language.



4

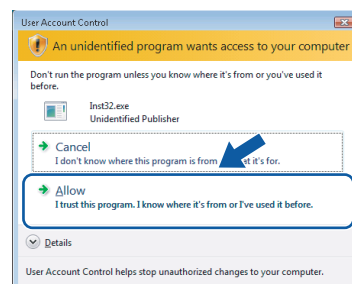
The CD-ROM main menu will appear. Click **Install MFL-Pro Suite**.



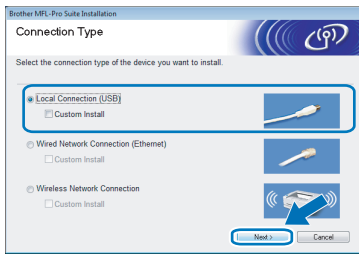
If this window does not appear, use Windows® Explorer to run the **start.exe** program from the root folder of the Brother CD-ROM.

**Note**

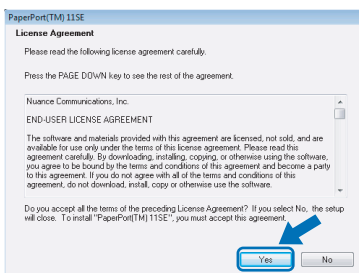
When the **User Account Control** screen appears, click **Allow**.



- 5** Choose **Local Connection**, and then click **Next**. The installation continues.

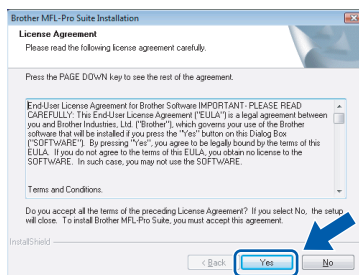


- 6** After reading and accepting the ScanSoft™ PaperPort™ 11SE **License Agreement**, click **Yes**.



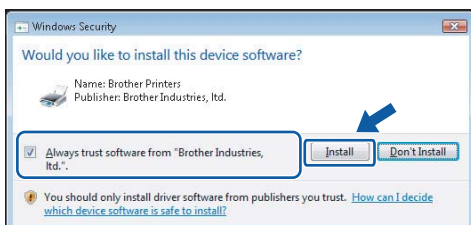
- 7** The installation of ScanSoft™ PaperPort™ 11SE will automatically start and is followed by the installation of MFL-Pro Suite.

- 8** When the Brother MFL-Pro Suite Software **License Agreement** window appears, click **Yes** if you agree to the Software License Agreement.

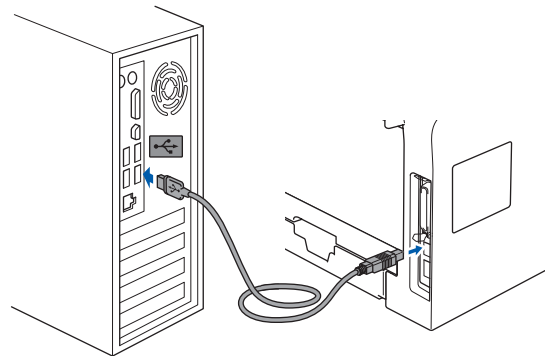
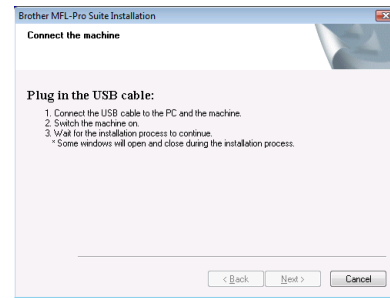


Note

When this screen appears, click the check box and click **Install** to complete the installation properly.



- 9** When this screen appears, connect the USB interface cable to your PC, and then connect it to the machine.

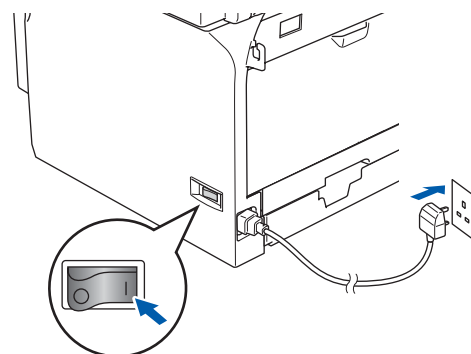


Windows®
USB

⚠ Improper Setup

DO NOT connect the machine to a USB port on a keyboard or a non-powered USB hub. Brother recommends that you connect the machine directly to your computer.

- 10** Plug in the power cord and turn on the machine.

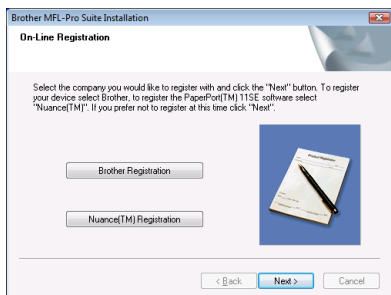


The installation of the Brother drivers will automatically start. The installation screens appear one after another. **Please wait, it will take a few seconds for all the screens to appear.**

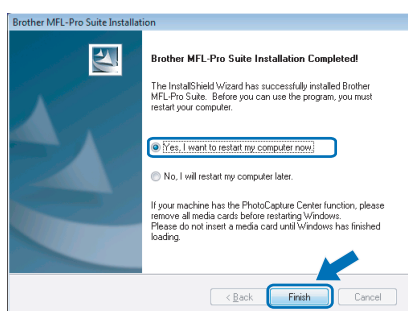
⚠ Improper Setup

DO NOT try to cancel any of the screens during this installation.

- 11** When the **On-Line Registration** screen is displayed, make your selection and follow the on-screen instructions.



- 12** Click **Finish** to restart your computer. After restarting the computer, you must be logged on with Administrator rights.



Note

After restarting the computer, the *Installation Diagnostics* will run automatically. If the installation is unsuccessful, the installation results window will be shown. If the *Diagnostics* shows a failure, please follow the on-screen instructions or read the on-line help and FAQs in **Start/All Programs/Brother/MFC-8870DW**.



The MFL-Pro Suite has been installed completely.



Note

MFL-Pro Suite includes the *Printer Driver*, *Scanner Driver*, *Brother ControlCenter3*, *ScanSoft™ PaperPort™ 11SE* and *TrueType®* fonts. *ScanSoft™ PaperPort™ 11SE* is a document management application for scanning and viewing documents.

For Wired Network Interface Users

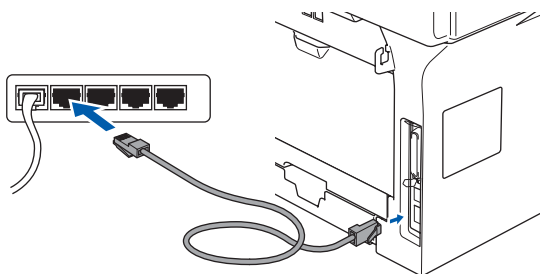
Important

Make sure that you have finished the instructions from **STEP 1 Setting Up the Machine** in the Quick Setup Guide.

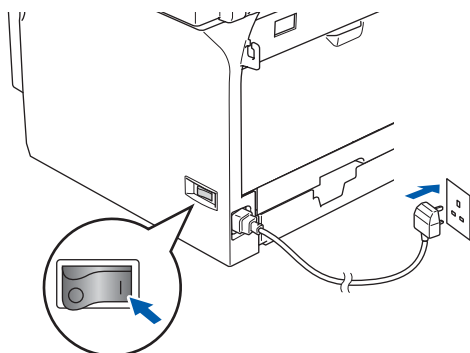
Note

Please close any applications running before installing MFL-Pro Suite.

- 1 Disconnect the machine from the power socket.
- 2 Connect the network interface cable to the machine, and then connect it to a free port on your hub.



- 3 Plug in the power cord and turn on the machine.



Improper Setup

If you have previously set up your machine for a wireless network and then want to set it up on a wired network, you should check that the machine's **WLAN Enable** is **Off**. The wireless network interface will become inactive with this setting.

On your machine, press Menu, 6, 2, 5 then press or to choose **Off**, and then press **OK**.

4

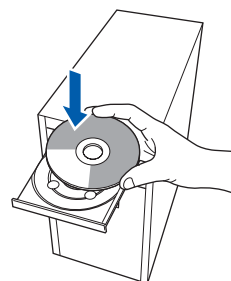
Turn on your computer.
You must be logged on with Administrator rights.
Close any applications running before installing the MFL-Pro Suite.

Note

Before installation, if you are using personal firewall software, disable it. After the installation, restart your personal firewall software.

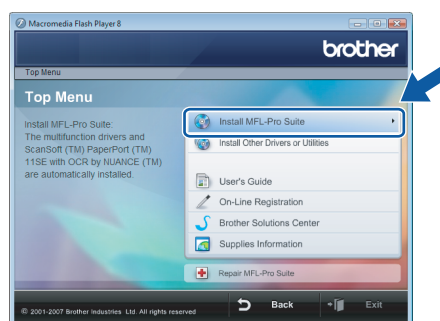
5

Put the supplied CD-ROM into your CD-ROM drive. If the model name screen appears, choose your machine. If the language screen appears, choose your language.



6

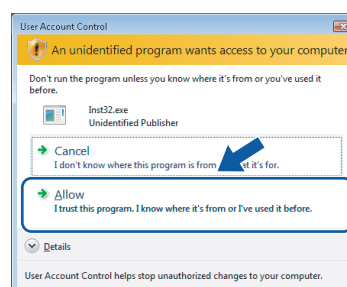
The CD-ROM main menu will appear. Click **Install MFL-Pro Suite**.



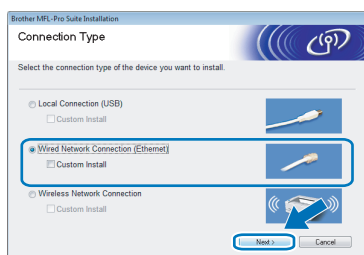
If this window does not appear, use Windows® Explorer to run the **start.exe** program from the root folder of the Brother CD-ROM.

Note

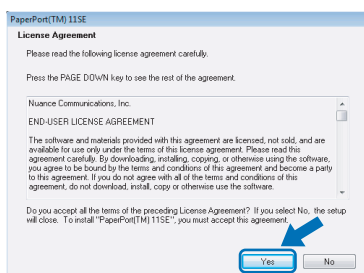
When the **User Account Control** screen appears, click **Allow**.



- 7** Choose **Wired Network Connection**, and then click **Next**.

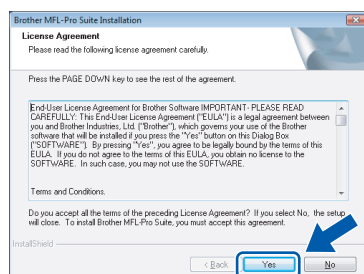


- 8** After reading and accepting the ScanSoft™ PaperPort™ 11SE License Agreement, click **Yes**.



- 9** The installation of ScanSoft™ PaperPort™ 11SE will automatically start and is followed by the installation of MFL-Pro Suite.

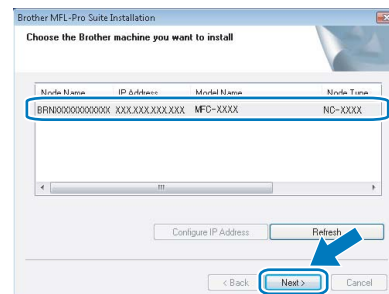
- 10** When the Brother MFL-Pro Suite Software License Agreement window appears, click **Yes** if you agree to the Software License Agreement.



Note

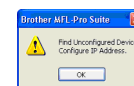
- If the machine is configured for your network, choose the machine from the list, and then click **Next**.

This window will not appear if there is only one machine connected on the network, it will be chosen automatically.



*If your machine shows **APIPA** in the **IP Address** field, click **Configure IP Address** and enter an IP address for your machine that is suitable for your network.*

- If the machine is not yet configured for use on your network, the following screen appears.



*Click **OK**.*

*The **Configure IP Address** window will appear. Enter an IP address for your machine that is suitable for your network by following the on-screen instructions.*

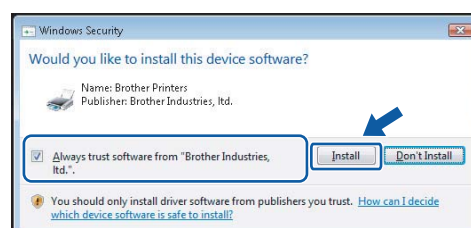
- 11** The installation of the Brother drivers will automatically start. The installation screens appear one after another. **Please wait, it will take a few seconds for all the screens to appear.**

Improper Setup

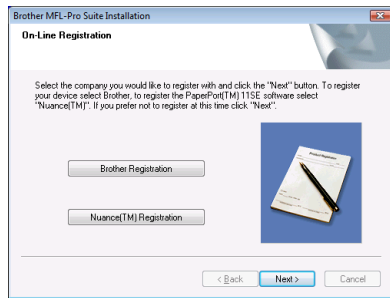
DO NOT try to cancel any of the screens during this installation.

Note

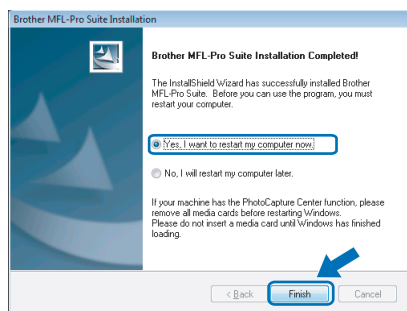
*When this screen appears, click the check box and click **Install** to complete the installation properly.*



- 12** When the Brother and ScanSoft **On-Line Registration** screen is displayed, make your selection and follow the on-screen instructions.



- 13** Click **Finish** to restart your computer. After restarting the computer, you must be logged on with Administrator rights.

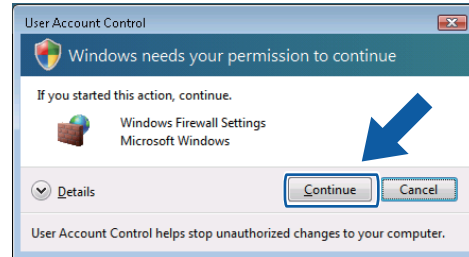


Note

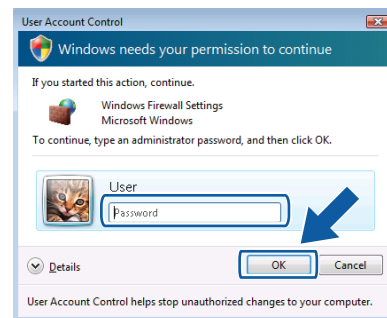
After restarting the computer, the *Installation Diagnostics* will run automatically. If the installation is unsuccessful, the installation results window will be shown. If the Diagnostics shows a failure, please follow the on-screen instructions or read the on-line help and FAQs in **Start/All Programs/Brother/MFC-8870DW**.

- 14** Once you are sure that you can print after the installation, restart your Firewall software. Firewall settings on your PC may reject the necessary network connection for Network Scanning and PC-Fax. If you are using the Windows® Firewall follow the instructions below. If you are using personal firewall software, see the User's Guide for your software or contact the software manufacturer.

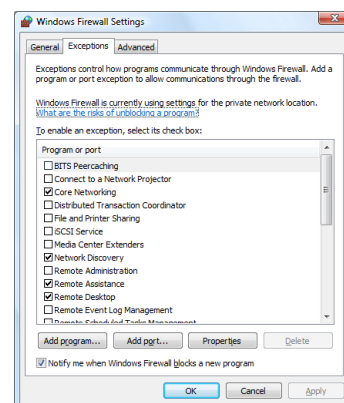
- 1 Click the **Start** button, **Control Panel**, **Network and Internet**, **Windows Firewall** and click **Change settings**.
- 2 When the **User Account Control** screen appears, do the following.
 - Users who have administrator rights: Click **Continue**.



- Users who do not have administrator rights: Enter the administrator password and click **OK**.

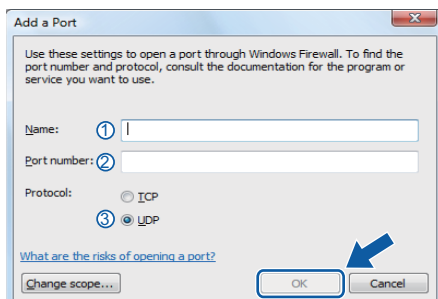


- 3 Make sure that Windows Firewall on the **General** tab is set to **On**.
- 4 Click the **Exceptions** tab.

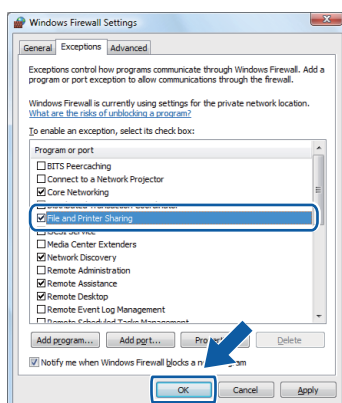


- 5 Click the **Add port...** button.

- 6 To add port **54925** for network scanning, enter the information below:
- 1) In **Name**: Enter any description, for example "Brother Scanner".
 - 2) In **Port number**: Enter "**54925**".
 - 3) Make sure **UDP** is selected.
- Then click **OK**.



- 7 Click the **Add port...** button.
- 8 To add port **54926** for Network PC-Fax, enter the information below:
- 1) In **Name**: Enter any description, for example "Brother PC-Fax".
 - 2) In **Port number**: Enter "**54926**".
 - 3) Make sure **UDP** is selected.
- Then click **OK**.
- 9 Make sure that the new setting is added and is checked, and then click **OK**.
- 10 If you still have trouble with your network connection such as Network Scanning or Printing, check the **File and Printer Sharing** box in the Exceptions tab and then click **OK**.



The MFL-Pro Suite has been installed completely.



Note

MFL-Pro Suite includes the Printer Driver, Scanner Driver, Brother ControlCenter3, ScanSoft™ PaperPort™ 11SE and TrueType® fonts. ScanSoft™ PaperPort™ 11SE is a document management application for scanning and viewing documents.

For Wireless Network Interface Users

Connecting your wireless machine and wireless network together in infrastructure mode and installing the printer driver in infrastructure mode

First you must configure the wireless network settings of your machine to communicate with your network access point (router). After the machine is configured to communicate with your access point (router) computers on your network will have access to the machine. To use the machine from these computers, you will need to install the MFL-Pro Suite. The following steps will guide you through the configuration and installation process.

To achieve optimum results with normal every day document printing, place the Brother machine as close to the network access point (router) as possible with minimal obstructions. Large objects and walls between the two devices as well as interference from other electronic devices can affect the data transfer speed of your documents.

Important

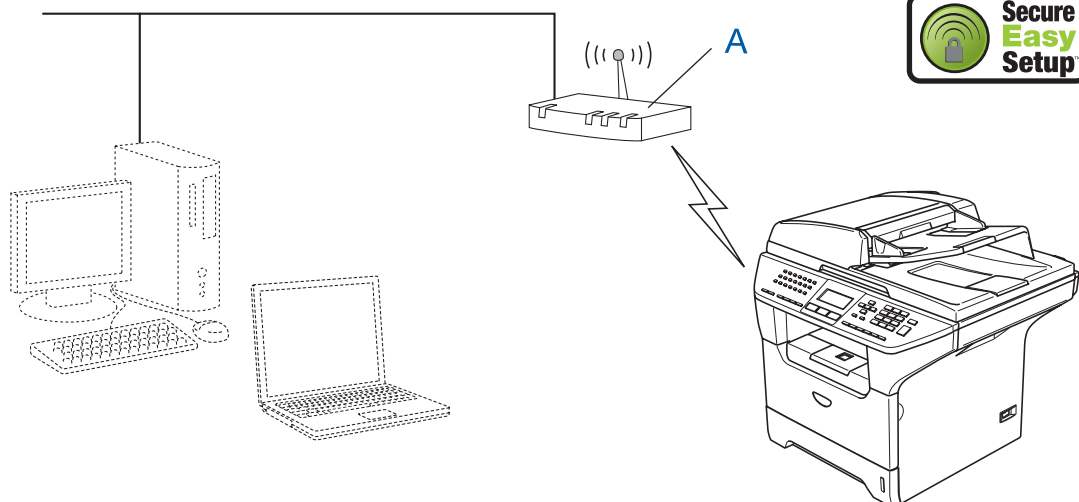
The following instructions will offer two methods for installing your Brother machine in a wireless network environment. Both methods are for infrastructure mode, using a wireless router or access point that uses DHCP to assign IP addresses. If your wireless router/access point supports SecureEasySetup™ follow the steps on page 13 *Using the SecureEasySetup™ software to configure your machine for a wireless network*. If your wireless router/access point does not support SecureEasySetup™ follow the steps on page 15 *Using the Setup Wizard from the control panel LAN menu for wireless network configuration*. To set up your machine in any other wireless environment you can find instructions in the Network User's Guide on the CD-ROM.

You can view the Network User's Guide by following the instructions below.

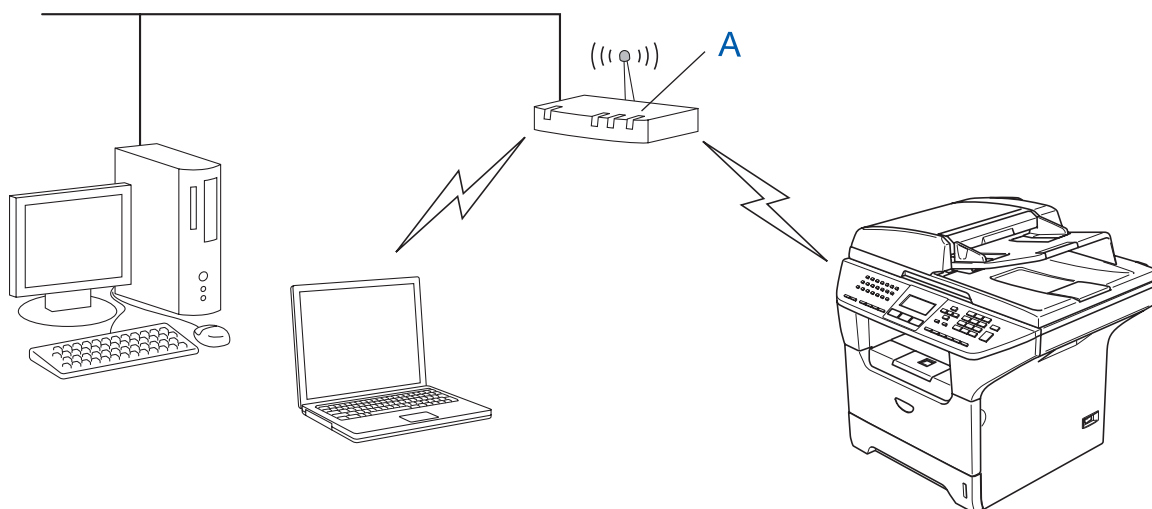
- 1 Turn on your PC. Insert the Brother CD-ROM into your CD-ROM drive.
- 2 If the model name screen appears, click your model name.
- 3 If the language screen appears, click your language. The CD-ROM main menu will appear.
- 4 Click the **User's Guide**.
- 5 Click the **Network User's Guide**.

Confirm your network environment

The setup process will be different depending on your network environment.

■ Installation using SecureEasySetup™

If your wireless access point (A) supports SecureEasySetup™, you do not need to use a computer to configure the machine. The access point (router) and your machine can automatically negotiate using the SecureEasySetup™ procedure. For instructions, go to page 13.

■ Infrastructure Mode

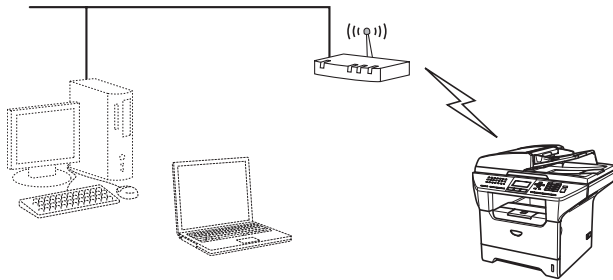
If your wireless access point (A) does not support SecureEasySetup™, follow the instructions on page 15.

Using the SecureEasySetup™ software to configure your machine for a wireless network

Important

Make sure that you have finished the instructions from *STEP 1 Setting Up the Machine* in the Quick Setup Guide.

The SecureEasySetup™ software allows you to configure the wireless network easier than configuring it manually. By pushing a button on the wireless router or access point, you can setup the wireless network and security settings. Your router or access point must also support SecureEasySetup™. See the user's guide for your wireless LAN router or access point for instructions to configure your machine for a wireless network. If your wireless router or access point does not support SecureEasySetup™ go to the next page for installation instructions.

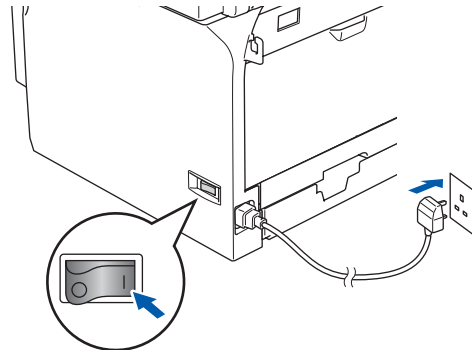


Note

Routers or access points that support SecureEasySetup™ have the SecureEasySetup™ symbol as shown below.



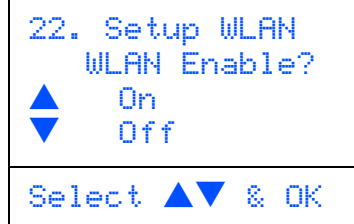
- 1 Plug in the power cord and turn on the machine.



Improper Setup

If you have previously configured the wireless settings of the machine you must reset the network (LAN) settings before you can configure the wireless settings again. Press **Menu, 6, 2, 4** and then press **1** to accept the change. The machine will restart automatically.

- 2 Place the Brother machine close to the SecureEasySetup™ router or access point (less than 5 m/16 feet).
- 3 Push the SecureEasySetup™ button on your wireless router or access point. See the user's guide for your wireless router or access point for instructions.
- 4 Press **Menu, 6, 2, 2, 2** on the control panel of the Brother machine.



Press or to choose **On**, then press **OK**. The wired network interface will become inactive with this setting.

5

The wireless network connection status using the SecureEasySetup™ software will be displayed: `Connecting WLAN`, `Connected` or `Connection Error`.

`Connecting WLAN` is displayed when the print server is trying to make connections to your router or access point. Wait till either `Connected` or `Connection Error` is displayed.

`Connected` is displayed when the print server is successfully connected to your router or access point. You can now use your machine in a wireless network.

`Connection Error` is displayed when the print server has not successfully connected to your router or access point. Try starting from step **2** again. If the same message is displayed again, reset the print server back to the default factory settings and try again.



Wireless setup is now complete. To install the MFL-Pro suite, continue to step 15 on page 17.

Using the Setup Wizard from the control panel LAN menu for wireless network configuration

Important

Make sure that you have finished the instructions from Step 1 Setting Up the Machine in the Quick Setup Guide.

These instructions will install your Brother machine in a typical small office or home wireless network environment in infrastructure mode, using a wireless router or access point that uses DHCP to assign IP addresses.

If you want to setup your machine in any other wireless environment you can find instructions in the Network User's Guide on the CD-ROM.

You can view the Network User's Guide by following the instructions below.

- 1 Turn on your PC. Insert the Brother CD-ROM labeled Windows Vista™ into your CD-ROM drive.
- 2 If the model name screen appears, click your model name.
- 3 If the language screen appears, click your language. The CD-ROM main menu will appear.
- 4 Click the **User's Guide**.
- 5 Click the **Network User's Guide**.



Note

If the window does not appear, use Windows® Explorer to run the start.exe program from the root directory of the Brother CD-ROM.



Before you begin you must know your wireless network settings.

1

Write down the wireless network settings of your access point or wireless router.

SSID (Service Set ID or Network name)

WEP Key (if needed)

WPA/WPA2-PSK (TKIP or AES) (if needed)

The WEP key is for 64 bit encrypted networks or 128 bit encrypted networks and can contain both numbers and letters. If you do not know this information you should see the documentation provided with your access point or wireless router. This key is a 64-bit or 128-bit value that must be entered in an ASCII or HEXADECIMAL format.

For example:

64 bit ASCII: Uses 5 text characters. e.g. "Hello" (this is case sensitive)

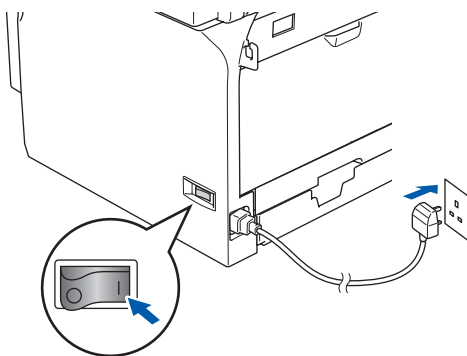
64 bit Hexadecimal: Uses 10 digits of hexadecimal data. e.g. "71f2234aba"

128 bit ASCII: Uses 13 text characters. e.g. "Wirelesscomms" (this is case sensitive)

128 bit Hexadecimal: Uses 26 digits of hexadecimal data. e.g. "71f2234ab56cd709e5412aa3ba"

WPA/WPA2-PSK is a Wi-Fi® Protected Access Pre-share key, which lets the Brother wireless machine associate with access points using TKIP or AES encryption (WPA-Personal). WPA/WPA2-PSK (TKIP or AES) uses a Pre-Shared Key (PSK) that is more than 8 and less than 63 characters in length. See the Network User's Guide for more details.

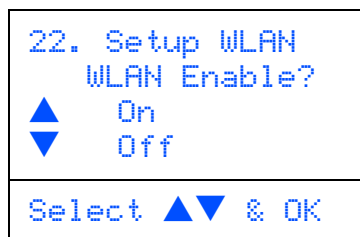
- 2** Plug in the power cord and turn on the machine.



⚠ Improper Setup

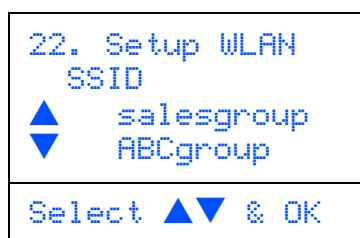
If you have previously configured the wireless settings of the machine you must reset the network (LAN) settings before you can configure the wireless settings again. Press Menu, 6, 2, 4 and then press 1 to accept the change.

- 3** On your machine, press **Menu, 6, 2, 2, 1**.



Press or to choose **On**, then press **OK**. The wired network interface will become inactive with this setting.

- 4** The machine will search for available SSIDs. If a list of SSIDs is displayed, use the or keys to choose the SSID you wrote down in step **1**, then press **OK**. Go to step **9**.

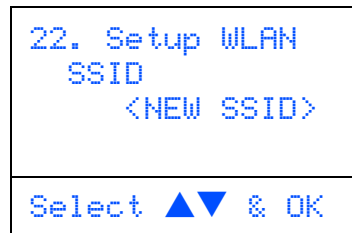


Note

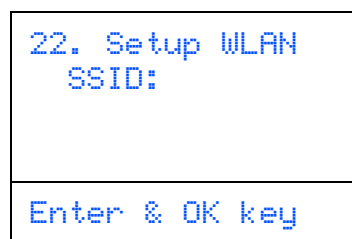
It will take a few seconds to display a list of available SSIDs.

If your access point is set to not broadcast the SSID you will have to manually add the SSID name. Go to step **5**.

- 5** Select **<NEW SSID>** using or and press **OK**. Go to step **6**.



- 6** Enter the SSID you wrote down in step **1**. For information how to type text, see *Entering Text* on page 23.



- 7** Press or to choose **Infrastructure**, then press **OK**.

- 8** Use the , , and **OK** keys to choose one of the options below: If your network is configured for Authentication and Encryption you must match the settings used for your network.

No Authentication or Encryption: Choose **Open system**, press **OK** then choose **None** for **Encryption Type** and press **OK**. Then press or to choose **1. Yes** and press **OK** to apply your settings. Go to step **13**.

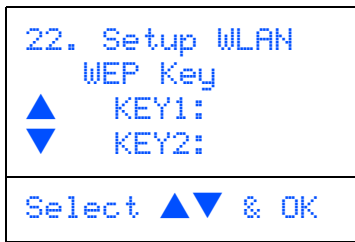
No Authentication with WEP Encryption: Choose **Open system**, press **OK** then use the or to choose **WEP** for the **Encryption Type** and press **OK**. Go to step **9**.

Authentication with WEP Encryption: Choose **Shared Key**, press **OK**. Go to step **9**.

Authentication with WPA-PSK (TKIP or AES Encryption): Choose **WPA/WPA2-PSK**, press **OK**. Go to step **10**.

Authentication with LEAP: Choose **LEAP**, press **OK**. Go to step **11**.

- 9** Choose the appropriate key number and press **OK**.



Enter the WEP key you wrote down in step **1** using the dial pad. You can use the and keys to move the cursor. For example, to enter the letter a, press the **2** key on the dial pad once. To enter the number 3, press the **3** key on the dial pad seven times.

Press **OK** when you have entered all the characters, then choose **1. Yes** and press **OK** to apply your settings. Go to step **13**.

Most access points and routers can store more than one key, but they will only use one at any time for authentication and encryption.

- 10** Press or to choose **TKIP** or **AES** for Encryption Type and press **OK**. Enter the WPA/WPA2-PSK password you wrote down in step **1** using the dial pad to choose each letter or number. You can use the and keys to move the cursor. For example, to enter the letter a, press the **2** key on the dial pad once. To enter the number 3, press the **3** key on the dial pad seven times.

Press **OK** when you have entered all the characters, then press **1 Yes** to apply your settings. Go to step **13**.

- 11** Enter the user and press **OK**. You can use and keys to move the cursor. For example, to enter the letter a, press the **1** key on the dial pad once. Go to step **12**.

- 12** Enter the password and press **OK**, and then choose **1. Yes** and press **OK** to apply your settings. Go to step **13**.

- 13** Your machine will now try to connect to your wireless network using the information you have entered. If successful, **Connected** will appear briefly on the LCD.

*If your machine does not successfully connect to your network, you should repeat steps **3** to **8** to make sure you have entered the correct information.*

- 14** The machine will automatically acquire the correct TCP/IP address information from your access point (router) if DHCP is enabled (DHCP is normally enabled as default for most access point routers).

If your access point does not have DHCP enabled you will need to manually configure the IP address, subnet mask and gateway of the machine to suit your network. See the Network User's Guide for details.

- OK!** **Wireless setup is now complete. To install the MFL-Pro Software suite, continue to step **15**.**

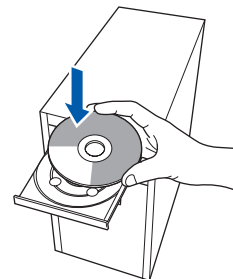
- 15** Turn on your computer. You must be logged on with Administrator rights. Close any applications running before installing the MFL-Pro Suite.



Note

Before installation, if you are using personal firewall software, disable it.

- 16** Put the supplied CD-ROM into your CD-ROM drive. If the model name screen appears, choose your machine. If the language screen appears, choose your language.

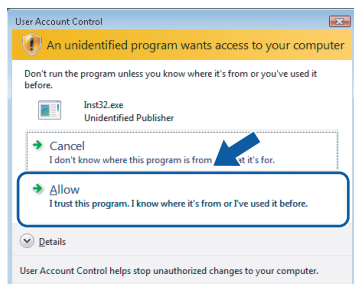


- 17** The CD-ROM main menu will appear. Click **Install MFL-Pro Suite**. If this window does not appear, use Windows® Explorer to run the start.exe program from the root folder of the Brother CD-ROM.

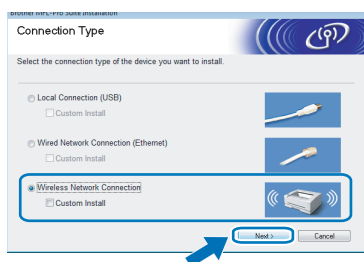


**Note**

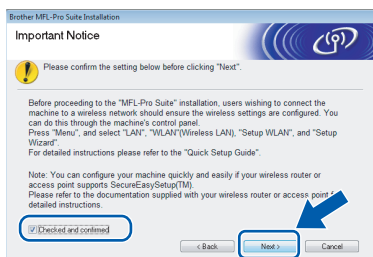
When the **User Account Control** screen appears, click **Allow**.



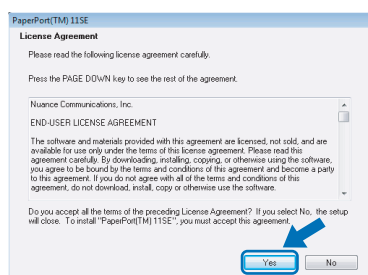
- 18** Choose **Wireless Network Connection**, and then click **Next**.



- 19** Click on **Checked and confirmed** check box, and then click **Next**.

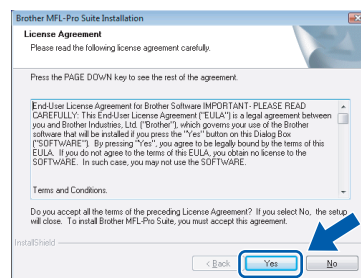


- 20** After reading and accepting the ScanSoft™ PaperPort™ SE License Agreement, click **Yes**.



- 21** The installation of PaperPort™ 11SE will automatically start and is followed by the installation of MFL-Pro Suite.

- 22** When the Brother MFL-Pro Suite Software License Agreement window appears, click **Yes** if you agree to the Software License Agreement.

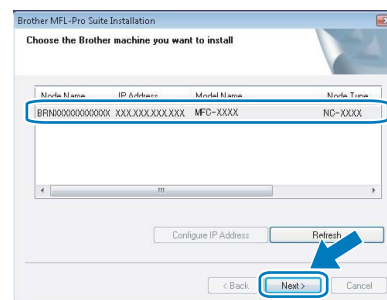


- 23** The installation of the Brother drivers will automatically start. The installation screens appear one after another. **Please wait, it will take a few seconds for all the screens to appear.**

⚠ Improper Setup

- **DO NOT** try to cancel any of the screens during this installation.
- If your wireless settings fail, an error message will appear during the installation of MFL-Pro Suite and the installation will be terminated. If you encounter this failure, please go to step **1** and setup the wireless connection again.

- 24** Choose the machine from the list, and then click **Next**.

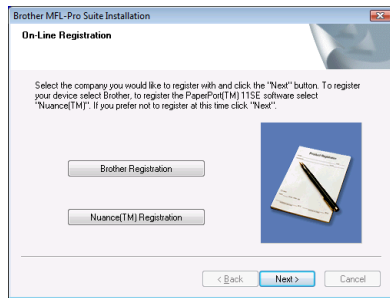
**Note**

If the machine is configured for your network, choose the machine from the list, and then click **Next**.

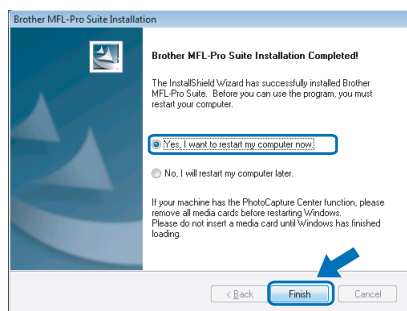
This window will not appear if there is only one machine connected on the network, it will be chosen automatically.

If your machine shows **APIPA** in the **IP Address** field, click **Configure IP Address** and enter an IP address for your machine that is suitable for your network.

- 25** When the Brother and ScanSoft **On-Line Registration** screen is displayed, make your selection and follow the on-screen instructions.



- 26** Click **Finish** to restart your computer. After restarting the computer, you must be logged on with Administrator rights.



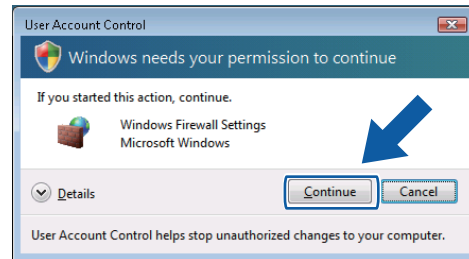
Note

After restarting the computer, the **Installation Diagnostics** will run automatically. If the installation is unsuccessful, the installation results window will be shown. If the Diagnostics shows a failure, please follow the on-screen instructions or read the on-line help and FAQs in **Start/All Programs/Brother/MFC-8870DW**.

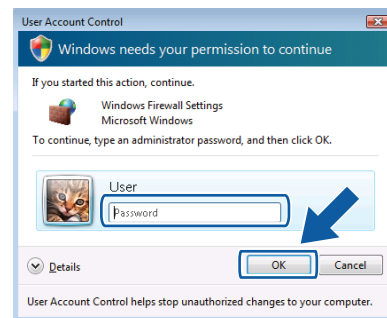
- 27** Once you are sure that you can print after the installation, restart your Firewall software. Firewall settings on your PC may reject the necessary network connection for Network Scanning and PC-Fax.

If you are using the Windows® Firewall follow the instructions below. If you are using personal firewall software, see the User's Guide for your software or contact the software manufacturer.

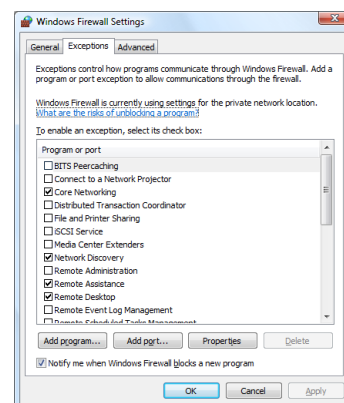
- 1 Click the **Start** button, **Control Panel**, **Network and Internet**, **Windows Firewall** and click **Change settings**.
- 2 When the **User Account Control** screen appears, do the following.
 - Users who have administrator rights: Click **Continue**.



- Users who do not have administrator rights: Enter the administrator password and click **OK**.

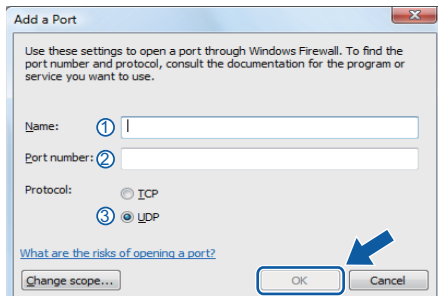


- 3 Make sure that Windows Firewall on the **General** tab is set to **On**.
- 4 Click the **Exceptions** tab.

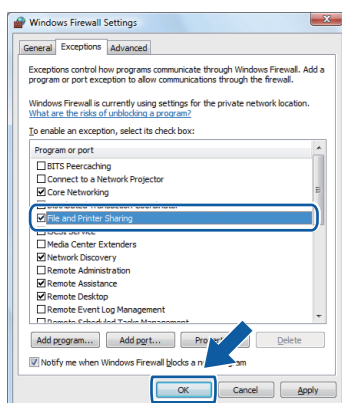


- 5 Click the **Add port...** button.

- 6 To add port **54925** for network scanning, enter the information below:
- 1) In **Name**: Enter any description, for example "Brother Scanner".
 - 2) In **Port number**: Enter "**54925**".
 - 3) Make sure **UDP** is selected.
- Then click **OK**.



- 7 Click the **Add port...** button.
- 8 To add port **54926** for Network PC-Fax, enter the information below:
- 1) In **Name**: Enter any description, for example "Brother PC-Fax".
 - 2) In **Port number**: Enter "**54926**".
 - 3) Make sure **UDP** is selected.
- Then click **OK**.
- 9 Make sure that the new setting is added and is checked, and then click **OK**.
- 10 If you still have trouble with your network connection such as Network Scanning or Printing, check the **File and Printer Sharing** box in the Exceptions tab and then click **OK**.



The MFL-Pro Suite has been installed completely.



Note

MFL-Pro Suite includes the Printer Driver, Scanner Driver, Brother ControlCenter3, ScanSoft™ PaperPort™ 11SE and TrueType® fonts. ScanSoft™ PaperPort™ 11SE is a document management application for scanning and viewing documents.

BRAdmin Light utility

The BRAdmin Light is a utility for initial setup of Brother network connected devices. It can also search for Brother products on your network, view the status and configure basic network settings, such as IP address. For more information on BRAdmin Light, visit us at <http://solutions.brother.com>.



Note

If you require more advanced printer management, use the latest Brother BRAdmin Professional utility version that is available as a download from <http://solutions.brother.com>.

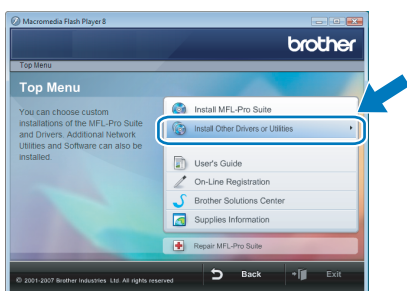
Installing the BRAdmin Light configuration utility



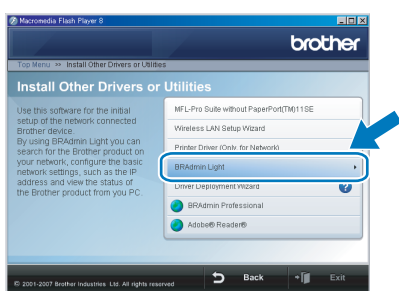
Note

The default password for the print server is 'access'. You can use BRAdmin Light to change this password.

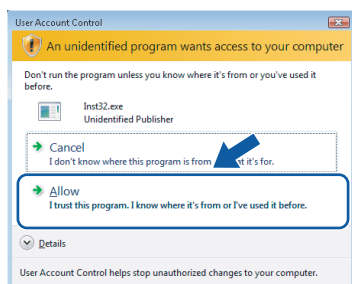
- 1 Click **Install Other Drivers or Utilities** on the menu screen.



- 2 Click **BRAdmin Light** and follow the on-screen instructions.



- 3 When the User Account Control screen appears, click **Allow**.



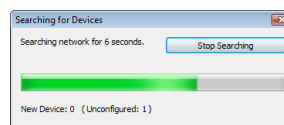
Setting your IP address, Subnet Mask and Gateway using BRAdmin Light



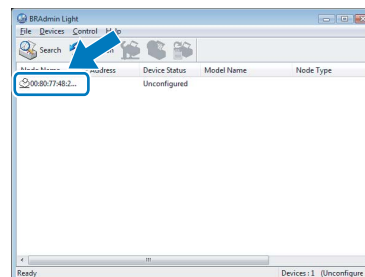
Note

If you have a DHCP/BOOTP/RARP server in your network, you don't have to do the following operation. Because the print server will automatically obtain its IP address.

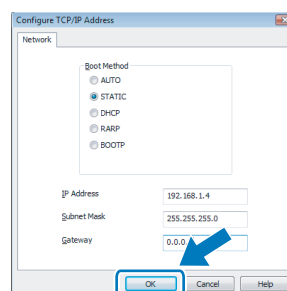
- 1 Start BRAdmin Light. It will search for new devices automatically.



- 2 Double-click the unconfigured device.



- 3 Choose **STATIC** for the **Boot Method**. Enter the **IP Address**, **Subnet Mask** and **Gateway**, and then click **OK**.





- 4 The address information will be saved to the machine.

How to set the machine's network settings to wireless LAN or wired LAN

To connect your Brother machine to a wireless or wired network you must configure the machine from the machine's control panel for the network type you are using.



For wireless LAN

On your machine, press **Menu, 6, 2, 5** then press

 or  to choose **On**, and then press **OK**.

For wired LAN

On your machine, press **Menu, 6, 1, 4** then press

 or  to choose **On**, and then press **OK**.



Note

*In case that you choose **On** for both wireless LAN and wired LAN, if the network cable is connected to the machine, the wired network interface will be active. If the cable is not connected to the machine, the wireless network interface will be active.*

Restoring the network settings to factory default

To restore all network settings of the internal Print/Scan server to factory default, please follow the steps below.

- 1** Make sure the machine is not operating, then disconnect all the cables from the machine (except power cable).
- 2** Press **Menu, 6, 0**.
- 3** Press **1** to select **Reset**.
- 4** Press **1** to select **Yes**.
- 5** The machine will restart, re-connect cables once this is complete.

Entering Text

When setting certain menu selections, such as the Station ID, you will need to type text characters. The number keys have letters printed on keys. The keys: **0**, **#** and **✖** do *not* have printed letters because they are used for special characters.

Press the appropriate number key the required number of times to access the characters below:

(For setting an e-mail address and a Node Name)

Press Key	one time	two times	three times	four times	five times	six times	seven times	eight times
2	a	b	c	A	B	C	2	a
3	d	e	f	D	E	F	3	d
4	g	h	i	G	H	I	4	g
5	j	k	l	J	K	L	5	j
6	m	n	o	M	N	O	6	m
7	p	q	r	s	P	Q	R	S
8	t	u	v	T	U	V	8	t
9	w	x	y	z	W	X	Y	Z

(For setting other menu selections)

Press Key	one time	two times	three times	four times
2	A	B	C	2
3	D	E	F	3
4	G	H	I	4
5	J	K	L	5
6	M	N	O	6
7	P	Q	R	S
8	T	U	V	8
9	W	X	Y	Z

Inserting spaces

To enter a space in a fax number, press **►** once between numbers. To enter a space in a name, press **►** twice between characters.

Making corrections

If you entered a letter incorrectly and want to change it, press **◄** to move the cursor under the incorrect character, and then press **Clear/Back**.

Repeating letters

To enter a character on the same key as the previous character, press **►** to move the cursor right before pressing the key again.

Special characters and symbols

Press **✖**, **#** or **0**, then press **◄** or **►** to move the cursor under the symbol or character you want. Press **OK** to select it.

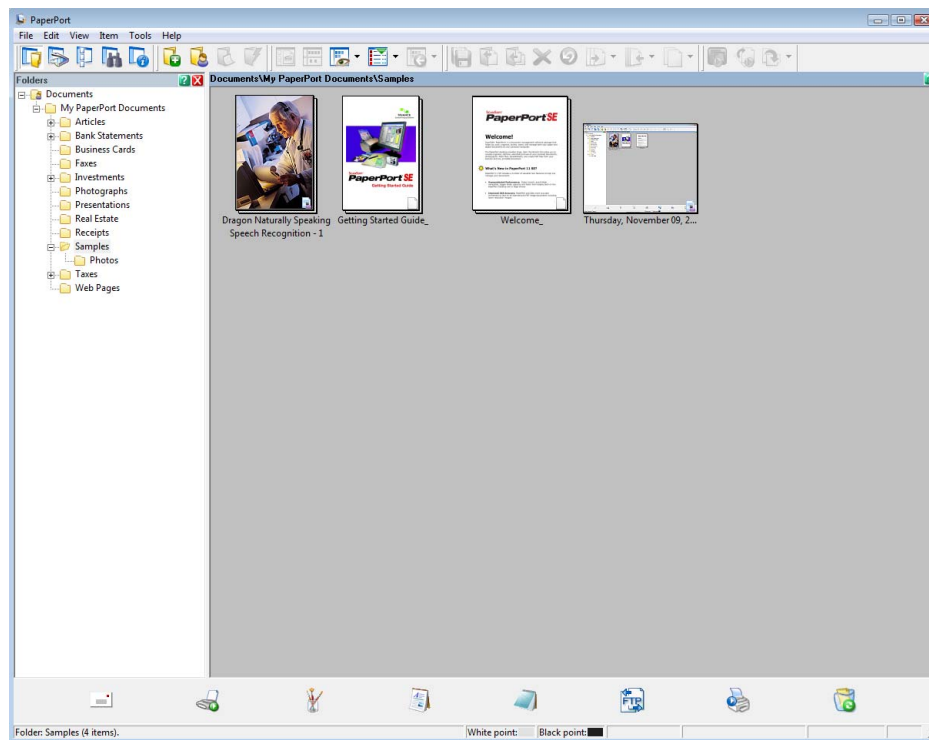
Press **✖** for (space) ! " # \$ % & ' () ✖ + , - . / € ¹
 Press **#** for ; < = > ? @ [] ^ _
 Press **0** for Ä Ë Ö Ü À Ç È É 0

¹ € is not available for I-Fax settings.

ScanSoft™ PaperPort™ 11SE with OCR by NUANCE™

ScanSoft™ PaperPort™ 11SE for Brother is a document management application. You can use PaperPort™ 11SE to view scanned documents.

PaperPort™ 11SE has a sophisticated, yet easy-to-use filing system that will help you organize your graphics and text documents. It allows you to mix or 'stack' documents of different formats for printing, faxing or filing.



To view the complete **ScanSoft™ PaperPort™ 11SE** User's Guide, choose **Help** from **PaperPort™ 11SE** menu bar and click **Getting Started Guide**.

When you install MFL-Pro Suite, ScanSoft™ PaperPort™ 11SE for Brother is installed automatically. You can access ScanSoft™ PaperPort™ 11SE through the **ScanSoft™ PaperPort™ 11SE** program group located in **Start/All Programs/ScanSoft PaperPort 11SE** on your PC.

Computer requirements

Minimum System Requirements and Supported PC Software Functions						
Operating Systems		Supported Functions	Interface	Minimum Processor	Recommended RAM	Required HARD Disk Space
Windows®	Windows Vista™	Printing, PC-FAX, Scanning	USB, 10/100 BASE-TX Wireless 802.11 b/g	1 GHz 32-bit (x86) or 64-bit (x64) processor	1.0 GB	1.0 GB
For the latest driver updates, visit at www.brother.com . All trademarks, brand and product names are property of their respective companies.						



Note

Parallel interface is not supported.

Trademarks

The Brother logo is a registered trademark of Brother Industries, Ltd.

Microsoft, MS-DOS and Windows are registered trademarks of Microsoft Corporation in the U.S. and other countries.

Windows Vista is either a registered trademark or trademark of Microsoft Corporation in the United States and/or other countries.

TrueType is a registered trademark of Apple Inc.

Nuance, the Nuance logo, PaperPort and ScanSoft are trademarks or registered trademarks of Nuance Communications, Inc. or its affiliates in the United States and/or other countries.

All other terms and brand and product names mentioned in this Windows Vista™ Setup Guide are registered trademarks of their respective companies.

Compilation and Publication

This manual has been compiled and published, under the supervision of Brother Industries Ltd., covering the latest product descriptions and specifications.

The contents of this manual and the specifications of this product are subject to change without notice.

Brother reserves the right to make changes without notice in the specifications and materials contained herein and shall not be responsible for any damages (including consequential) caused by reliance on the materials presented, including but not limited to typographical and other errors relating to the publication.

This product is designed for use in a professional environment.

Copyright and License

© 2007 Brother Industries, Ltd. © 1998-2007 TROY Group, Inc. © 1983-2007 PACIFIC SOFTWARES INC. This product includes the "KASAGO TCP/IP" software developed by Elmic Systems, Inc. © 2007 Devicescape Software, Inc. ALL RIGHTS RESERVED.

