

Windows Vista™ Installation Guide

Before you can use the machine, you must set up the hardware and install the driver. Please read the 'Quick Setup Guide' and this 'Windows Vista™ Installation Guide' for proper set up and installation instructions.

STEP 1

Setting Up the Machine

Please follow the steps in STEP 1 Setting Up the Machine in the Quick Setup Guide first. Then return to STEP 2 Installing the driver & software in this installation guide.



STEP 2

Installing the Driver & Software

Please follow the steps in this Windows Vista™ Installation Guide for proper driver & software installation instructions.



Setup is Complete!

Keep the 'Quick Setup Guide', 'Windows Vista™ Installation Guide' and the supplied CD-ROM in a convenient place for quick and easy reference at all times.



Before using this manual


This manual is for Windows Vista™ users only. This installation guide explains how to install the MFC-Pro Suite software and multifunction drivers for Windows Vista™ and other information about Windows Vista™. Before installing the driver and software, please follow the steps in the **Getting Started** section and **STEP1 Setting Up the Machine** in the Quick Setup Guide. After you complete the initial setup, follow the steps in this guide for installing the MFL-Pro Suite and drivers. You can also find other information about the machine in the Quick Setup Guide.



See the Quick Setup Guide first.

Follow the instructions on this page for your operating system and interface.
For the latest drivers, documentation, and to find the best solution for your problem, access the Brother Solution Center directly from the CD-ROM / Driver or visit <http://solutions.brother.com>.

Windows®

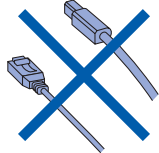
	For USB Interface Users	3
	■ How to connect the machine to your computer.....	4

	For Network Interface Users	6
---	--	----------

For USB Interface Users

Improper Setup

DO NOT connect the interface cable. Connecting the interface cable is done when installing the driver.

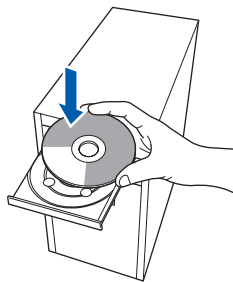


Important

Make sure that you have finished the instructions from **STEP 1 Setting Up the Machine in the Quick Setup Guide.**

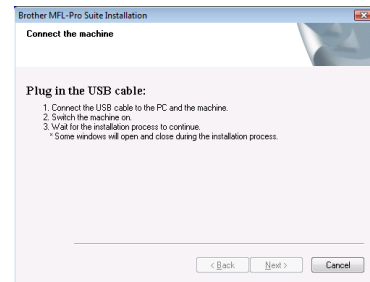
Installing the driver and connecting the machine to your computer

- 1** Disconnect the machine from the power socket and from your computer, if you already connected an interface cable.
- 2** Turn on your computer. (You must be logged on with Administrator rights.)
- 3** Put the supplied CD-ROM for Windows Vista™ into your CD-ROM drive. If the model name screen appears, choose your machine. If the language screen appears, choose your language.



- 4** The CD-ROM main menu will appear. Click **Install MFL-Pro Suite.**

- 5** After reading and accepting the ScanSoft™ PaperPort™ 11SE License Agreement, click **Yes.**
- 6** The installation of ScanSoft™ PaperPort™ 11SE will automatically start and is followed by the installation of MFL-Pro Suite.
- 7** When the Brother MFL-Pro Suite Software License Agreement window appears, click **Yes** if you agree to the Software License Agreement.
- 8** Choose **Local Connection**, and then click **Next**, or choose **Standard**, and then click **Next**. The installation continues.
- 9** When this screen appears, go to the next step.



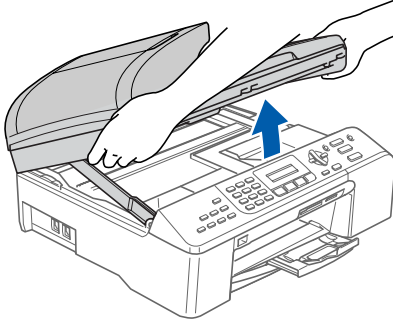
- 10** Go to the “How to connect the machine to your computer” steps for your model.

Model Number	Page Number
MFC-5460CN	page 4
DCP-7010, DCP-8060, DCP-8065DN, MFC-7420, MFC-7820N, MFC-8460N, MFC-8860DN	page 5

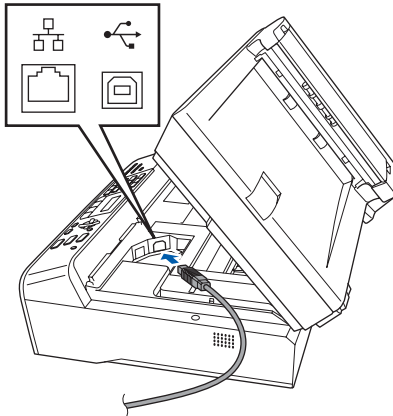
How to connect the machine to your computer

For MFC-5460CN users

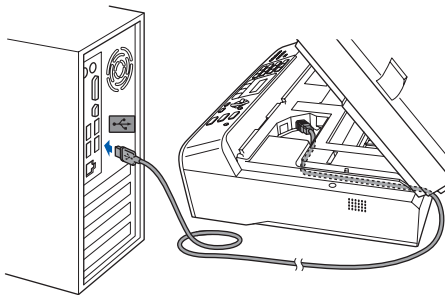
1



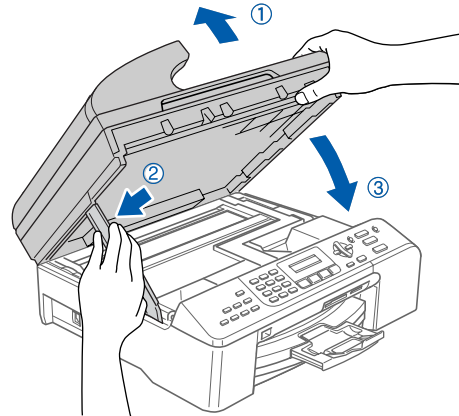
2



3



4



5

Turn on the machine by connecting the power cord.

The installation of the Brother drivers will automatically start. The installation screens appear one after another. **Please wait, it will take a few seconds for all the screens to appear.**

6

When the **On-Line Registration** screen is displayed, make your selection and follow the on-screen instructions.

7

Click **Finish** to restart your computer. After restarting the computer, you must be logged on with Administrator rights.



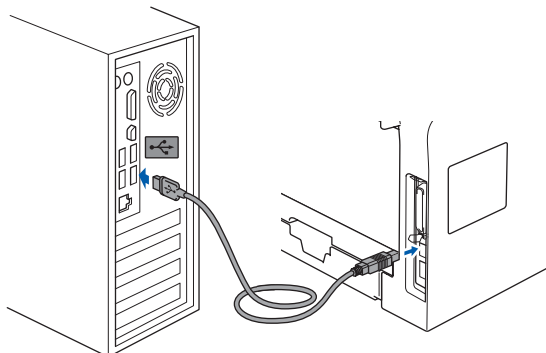
The MFL-Pro Suite has been installed completely.

⊘ Improper Setup

Make sure that the cable does not restrict the cover from closing, or an error may occur.

For DCP-7010, DCP-8060, DCP-8065DN, MFC-7420, MFC-7820N, MFC-8460N and MFC-8860DN users (The illustrations are based on DCP-8060.)

1



2

Plug the AC power cord into an AC outlet. Turn the power switch on.

The installation of the Brother drivers will automatically start. **The installation screens appear one after another, please wait for a while.**

3

When the **On-Line Registration** screen is displayed, make your selection and follow the on-screen instructions.

4

Click **Finish** to restart your computer. After restarting the computer, you must be logged on with Administrator rights.



The MFL-Pro Suite has been installed completely.

For Network Interface Users

The installation steps for the MFL-Pro Software Suite and drivers will depend on your model number. Please check the table below for the correct installation method for your model.

Model Number	Page Number
MFC-5460CN	page 6
DCP-8065DN, MFC-7820N, MFC-8460N, MFC-8860DN	page 8

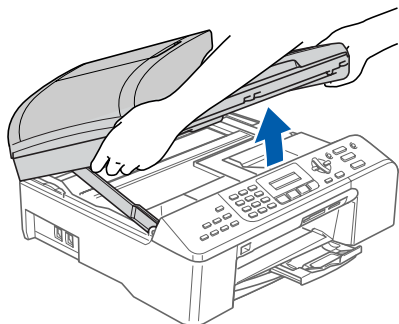
For MFC-5460CN users

Important

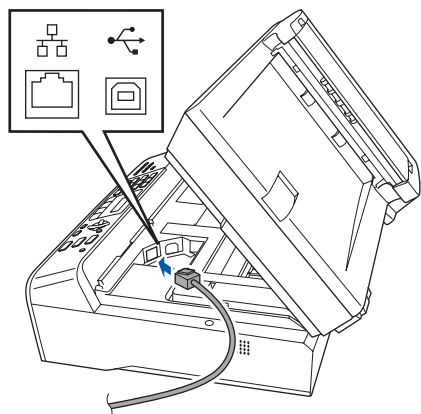
Make sure that you have finished the instructions from **STEP 1 Setting Up the machine in the Quick Setup Guide**.

- 1 Disconnect the machine from the power socket and from your network, if you already connected an interface cable.

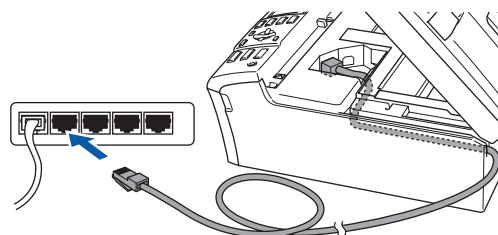
2



3



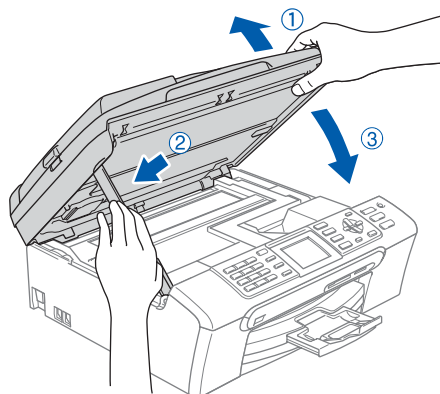
4



⊘ Improper Setup

Make sure that the cable does not restrict the cover from closing, or an error may occur.

5



6

- 6 Turn on the machine by connecting the power cord.

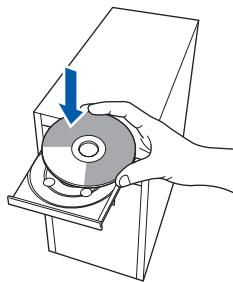
7

- 7 Turn on your computer. You must be logged on with Administrator rights. Close any applications running before installing the MFL-Pro Suite.

Note

Before installation, if you are using personal firewall software, disable it. After the installation, restart your personal firewall software.

- 8** Put the supplied CD-ROM into your CD-ROM drive. If the model name screen appears, choose your machine. If the language screen appears, choose your language.



- 9** The CD-ROM main menu will appear. Click **Install MFL-Pro Suite**.

- 10** After reading and accepting the ScanSoft™ PaperPort™ 11SE License Agreement, click **Yes**.

- 11** The installation of ScanSoft™ PaperPort™ 11SE will automatically start and is followed by the installation of MFL-Pro Suite.

- 12** When the Brother MFL-Pro Suite Software License Agreement window appears, click **Yes** if you agree to the Software License Agreement.

- 13** Choose **Network Connection**, and then click **Next**.

Note

- If the machine is configured for your network, choose the machine from the list, and then click **Next**.
If your machine shows **APIPA** in the **IP Address** field, click **Configure IP Address** and enter an IP address for your machine that is suitable for your network.
- If the machine is not yet configured for use on your network, the machine prompts you to click **OK**, and the **Configure IP Address** window will appear.
Enter an IP address for your machine that is suitable for your network by following the on-screen instructions.

- 14** The installation of the Brother drivers will automatically start. The installation screens appear one after another. **Please wait, it will take a few seconds for all the screens to appear.**

- 15** When the Brother and ScanSoft **On-Line Registration** screen is displayed, make your selection and follow the on-screen instructions.

- 16** Click **Finish** to restart your computer. After restarting the computer, you must be logged on with Administrator rights.

- 17** Once you are sure that you can print after the installation, restart your Firewall software. Firewall settings on your PC may reject the necessary network connection for Network Scanning and PC-Fax.

If you are using the Windows® Firewall follow the instructions below. If you are using personal firewall software, see the User's Guide for your software or contact the software manufacturer.

- 1 Click the **Start** button, **Control Panel**, **Network and Internet**, **Windows Firewall** and click **change settings**.
- 2 When the **User Account Control** screen appears, do the following.
 - Users who have administrator rights: Click **Continue**.
 - Users who do not have administrator rights: Enter the administrator password and click **OK**.
- 3 Make sure that Windows Firewall on the **General** tab is set to **On**.
- 4 Click the **Exceptions** tab.
- 5 Click the **Add port...** button.
- 6 To add port **54925** for network scanning, enter the information below:
 - 1) In **Name**: Enter any description, for example "Brother Scanner".
 - 2) In **Port number**: Enter "**54925**".
 - 3) Make sure **UDP** is selected. Then click **OK**.
- 7 Click the **Add port...** button.
- 8 To add port **54926** for Network PC-Fax (MFC Models only), enter the information below:
 - 1) In **Name**: Enter any description, for example "Brother PC-Fax".
 - 2) In **Port number**: Enter "**54926**".
 - 3) Make sure **UDP** is selected. Then click **OK**.
- 9 Make sure that the new setting is added and is checked, and then click **OK**.
- 10 If you still have trouble with your network connection such as Network Scanning or Printing, check the **File and Printer Sharing** box in the **Exceptions** tab and then click **OK**.



The MFL-Pro Suite has been installed completely.

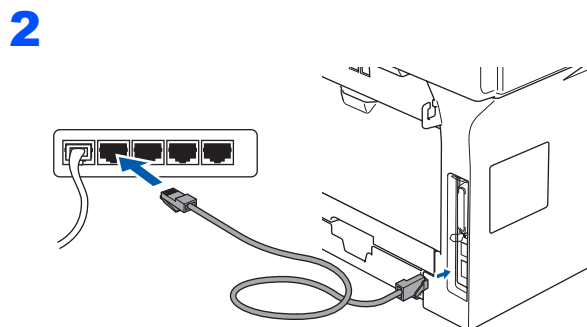
For DCP-8065DN, MFC-7820N, MFC-8460N and MFC-8860DN users

Important

Make sure that you have finished the instructions from **STEP 1 Setting Up the Machine** in the **Quick Setup Guide**.

(The illustrations are based on DCP-8065DN.)

1 Turn off and unplug the machine from the AC outlet.



3 Plug the AC power cord into an AC outlet. Turn the power switch on.

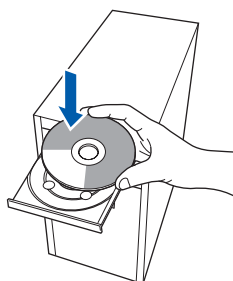
4 Turn on your computer. (You must be logged on with Administrator rights.) Close any applications running before installing the MFL-Pro Suite.



Note

Before installation, if you are using personal firewall software, disable it. After the installation, restart your personal firewall software.

5 Put the supplied CD-ROM into your CD-ROM drive. If the model name screen appears, choose your machine. If the language screen appears, choose your language.



6 The CD-ROM main menu will appear. Click **Install MFL-Pro Suite**.

7 After reading and accepting the ScanSoft™ PaperPort™ 11SE License Agreement, click **Yes**.

8 When the Brother MFL-Pro Suite Software License Agreement window appears, click **Yes** if you agree to the Software License Agreement.

9 Choose **Network Connection**, and then click **Next**.

10 If the machine is configured for your network, choose the machine from the list, and then click **Next**. If your machine shows **APIPA** in the **IP Address** field, click **Configure IP Address** and enter an **IP address** for your machine that is suitable for your network.



Note

If the machine is not yet configured for use on your network, the machine prompts you to click **OK**, and the **Configure IP Address** window will appear.

Enter an IP address for your machine that is suitable for your network by following the on-screen instructions.

11 The installation of the Brother drivers will automatically start. The installation screens appear one after another. **Please wait, it will take a few seconds for all the screens to appear.**

12 When the Brother and ScanSoft **On-Line Registration** screen is displayed, make your selection and follow the on-screen instructions.

13 Click **Finish** to restart your computer. After restarting the computer, you must be logged on with Administrator rights.

14 Once you are sure that you can print after the installation, restart your Firewall software. Firewall settings on your PC may reject the necessary network connection for Network Scanning and PC-Fax.

If you are using the Windows® Firewall follow the instructions below. If you are using personal firewall software, see the User's Guide for your software or contact the software manufacturer.

1 Click the **Start** button, **Control Panel**, **Network and Internet**, **Windows Firewall** and click **change settings**.

- 2 When the **User Account Control** screen appears, do the following.
 - Users who have administrator rights:
Click **Continue**.
 - Users who do not have administrator rights:
Enter the administrator password and click **OK**.
- 3 Make sure that Windows Firewall on the **General** tab is set to On.
- 4 Click the **Exceptions** tab.
- 5 Click the **Add port...** button.
- 6 To add port **54925** for network scanning, enter the information below:
 - 1) In **Name**: Enter any description, for example "Brother Scanner".
 - 2) In **Port number**: Enter "**54925**".
 - 3) Make sure **UDP** is selected.Then click **OK**.
- 7 Click the **Add port...** button.
- 8 To add port **54926** for Network PC-Fax (MFC models only), enter the information below:
 - 1) In **Name**: Enter any description, for example "Brother PC-Fax".
 - 2) In **Port number**: Enter "**54926**".
 - 3) Make sure **UDP** is selected.Then click **OK**.
- 9 Make sure that the new setting is added and is checked, and then click **OK**.
- 10 If you still have trouble with your network connection such as Network Scanning or Printing, check the **File and Printer Sharing** box in the **Exceptions** tab and then click **OK**.



The MFL-Pro Suite has been installed completely.

Computer requirements

Minimum System Requirements and Supported PC Software Functions						
Operating Systems		Supported Functions	Interface	Minimum Processor	Recommended RAM	Required HARD Disk Space
Windows®	Windows Vista™	Printing, Scanning, PC-FAX ¹ , Removable Disk ²	USB, USB 10/100, BASE-TX ³	1 GHz 32-bit (x86) or 64-bit (x64) processor	1.0 GB	1.0 GB
¹ PC FAX supports black and white faxing only. ² Removable disk is a function of PhotoCapture Center®. ³ DCP-8065DN, MFC-440CN, MFC-5460CN, MFC-7820N, MFC-8460N, MFC-8860DN only.			For the latest driver updates, visit at www.brother.com . All trademarks, brand and product names are property of their respective companies.			

Trademarks

The Brother logo is a registered trademark of Brother Industries, Ltd.

Microsoft, MS-DOS and Windows are registered trademarks of Microsoft Corporation in the U.S. and other countries.

Windows Vista is either a registered trademark or trademark of Microsoft Corporation in the United States and/or other countries.

All other terms and brand and product names mentioned in this Windows Vista™ Installation Guide are registered trademarks of their respective companies.

Nuance, the Nuance logo, PaperPort and ScanSoft are trademarks or registered trademarks of Nuance Communications, Inc. or its affiliates in the United States and/or other countries.

Compilation and Publication

This manual has been compiled and published, under the supervision of Brother Industries Ltd., covering the latest product descriptions and specifications.

The contents of this manual and the specifications of this product are subject to change without notice.

Brother reserves the right to make changes without notice in the specifications and materials contained herein and shall not be responsible for any damages (including consequential) caused by reliance on the materials presented, including but not limited to typographical and other errors relating to the publication.

This product is designed for use in a professional environment.

Copyright and License

© 2007 Brother Industries, Ltd. © 1998-2007 TROY Group, Inc. © 1983-2007 PACIFIC SOFTWARES INC. This product includes the "KASAGO TCP/IP" software developed by Elmec Systems, Inc. © 2007 Devicescape Software, Inc. ALL RIGHTS RESERVED.

brother®

EEU-ENG