

Before you can use the machine, read this Quick Setup Guide for the correct setup and installation.

**WARNING**

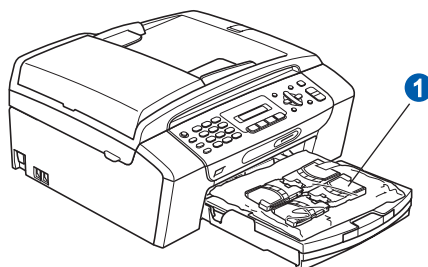
Warnings tell you what to do to prevent possible personal injury.

Important

DO NOT connect the USB cable yet.

**1**

Unpack the machine and check the components

**WARNING**

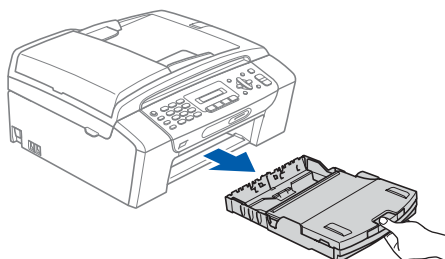
Plastic bags are used in the packaging of your machine. To avoid danger of suffocation, please keep these bags away from babies and children.

■ Illustrations in this Quick Setup Guide are based on MFC-290C.

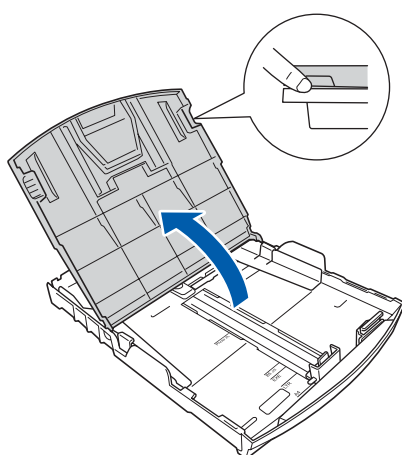
- a** Remove the protective tape and film covering the scanner glass.
- b** Remove the plastic bag ① containing the ink cartridges from on top of the paper tray.
- c** Make sure you have all components.

2 Load plain A4 paper

a

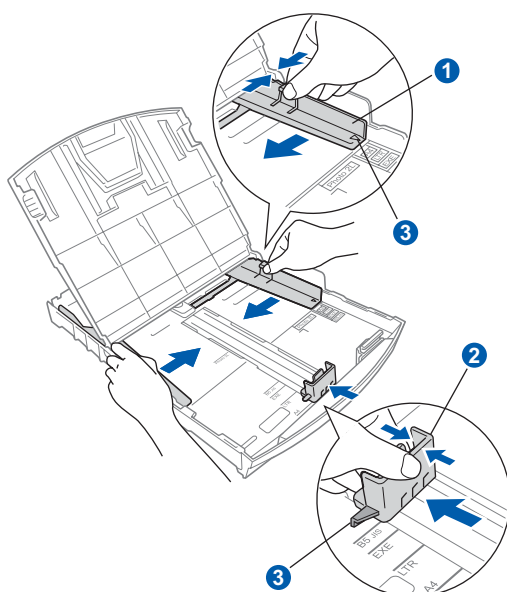


b



c With both hands, gently press and slide the paper side guides ① and then the paper length guide ② to fit the paper size.

Make sure that the triangular marks ③ on the paper side guides ① and paper length guide ② line up with the mark for the paper size you are using.



d

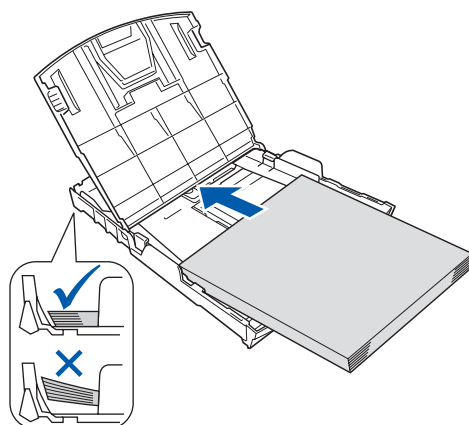
Fan the stack of paper well to avoid paper jams and misfeeds.

e

Check that the paper is flat in the tray.

Important

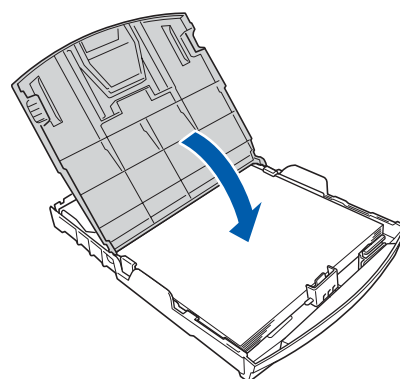
Do not push the paper in too far.



f

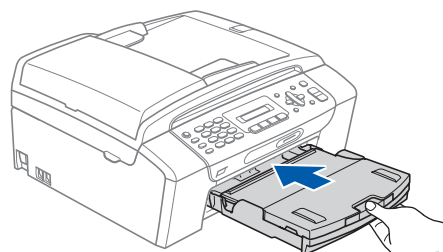
Gently adjust the paper side guides to the paper with both hands.

g



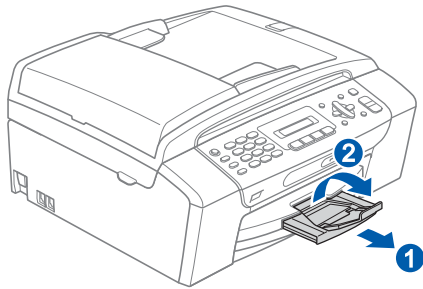
h

Slowly push the paper tray completely into the machine.



i

While holding the paper tray in place, pull out the paper support ① until it clicks, and then unfold the paper support flap ②.



3

Connect the power cord and telephone line

Important

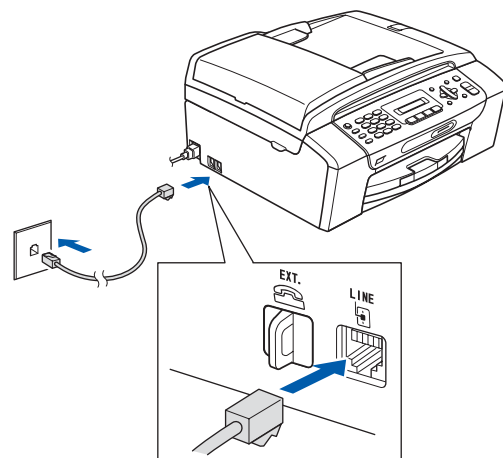
DO NOT connect the USB cable yet.

a Connect the power cord.

! WARNING

The machine must be fitted with an earthed plug.

b



! WARNING

Since the machine is grounded through the power outlet, you can protect yourself from potentially hazardous electrical conditions on the telephone network by keeping the power cord connected to your machine when you connect it to a telephone line. Similarly, you can protect yourself when you want to move your machine by disconnecting the telephone line first and then the power cord.

Important

The telephone line cord **MUST** be connected to the socket on the machine marked **LINE**.

4

Install the ink cartridges



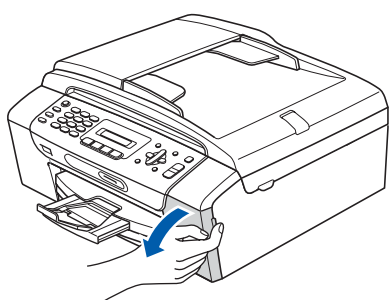
WARNING

If ink gets in your eyes, wash them out with water at once, and if irritation occurs consult a doctor.

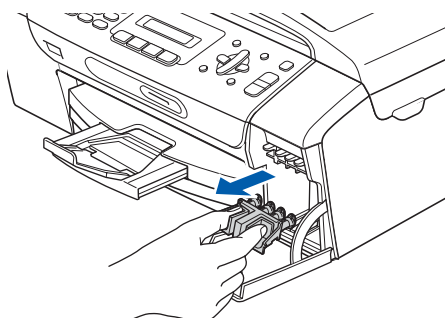
a

No Cartridge

b



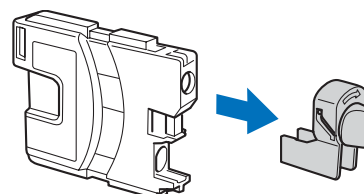
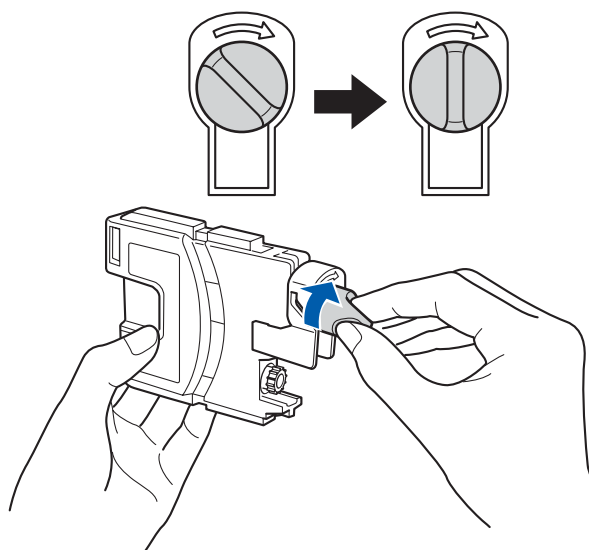
c



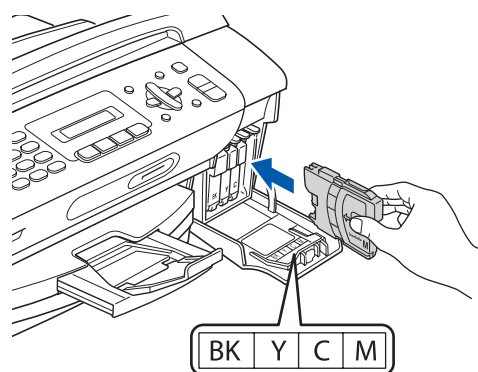
d

Unpack the ink cartridge.

e

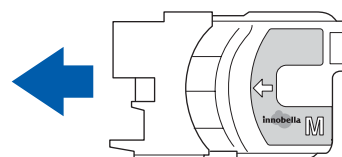


f

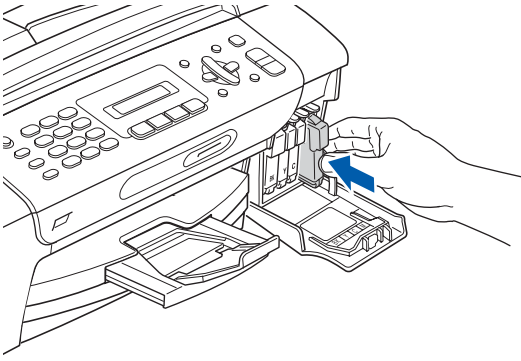


g

Install each ink cartridge in the direction of the arrow on the label.



h

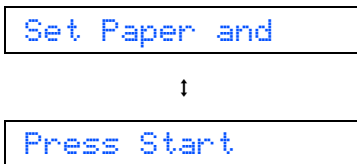


Note

The machine will prepare the ink tube system for printing. This process will take approximately four minutes. Do not turn off the machine.

5 Check the print quality

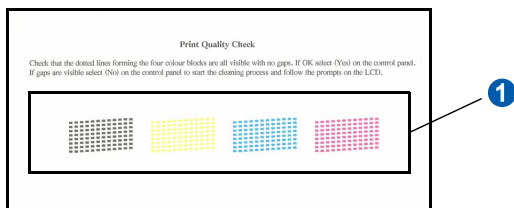
a



Press **Colour Start**.

b

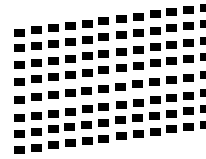
Check the quality of the four colour blocks **1** on the sheet. (black/yellow/cyan/magenta)



c

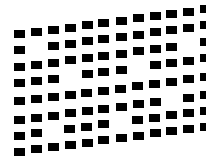
If all lines are clear and visible, press **1** (Yes) on the dial pad to finish the quality check.

OK



If you can see missing short lines, press **2** (No) on the dial pad and go to **d**.

Poor



d

The LCD asks you if the print quality is OK for black and colour. Press **1** (Yes) or **2** (No) on the dial pad.



↓



↓



After pressing **1** (Yes) or **2** (No) for both black and colour, the LCD shows:



↓



e

Press **1** (Yes), the machine will then start cleaning the colours.

f

After cleaning is finished, press **Colour Start**. The machine starts printing the Print Quality Check Sheet again. Go back to **b**.

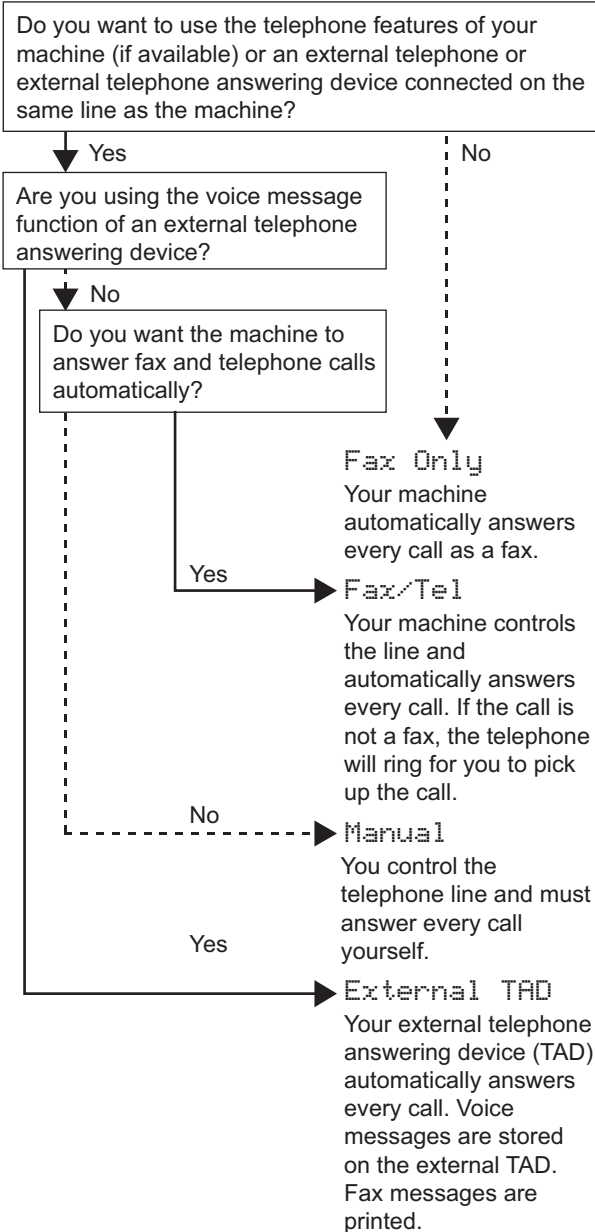
6

Choosing your language

- a** Press **Menu**.
- b** Press **0**.
- c** Press **0**.
- d** Press **▲** or **▼** to choose your language, and then press **OK**.
- e** Press **Stop/Exit**.

7

Choose a Receive Mode



- a** Press **Menu**.
- b** Press **0**.
- c** Press **1**.
- d** Press **▲** or **▼** to choose the receive mode. Press **OK**.
- e** Press **Stop/Exit**.

8 Set the LCD contrast (If needed)

- a** Press **Menu**.
- b** Press **1**.
- c** Press **7**.
- d** Press **▲** or **▼** to choose **Dark** or **Light**.
- e** Press **OK**.
- f** Press **Stop/Exit**.

9 Set the date and time

- a** Press **Menu**.
- b** Press **0**.
- c** Press **2**.
- d** Enter the last two digits of the year on the dial pad, and then press **OK**.

Year: 2008

(e.g. Enter **0 8** for 2008.)

- e** Repeat for Month and Day, and Hours and Minutes in 24-hour format.
- f** Press **Stop/Exit**.

10 Enter personal information (station ID)

You should store your name and fax number to be printed on all fax pages that you send.

- a** Press **Menu**.
- b** Press **0**.
- c** Press **3**.
- d** Enter your fax number (up to 20 digits) on the dial pad, and then press **OK**. To enter a "+" for international codes, press *****. For example, to enter the UK dialling code "+44", press *****, **4**, **4** and then the rest of your number.
- e** Enter your name (up to 20 characters) using the dial pad, and then press **OK**.



Note

- See the following chart for entering your name.
- If you need to enter a character that is on the same key as the last character, press **▶** to move the cursor to the right.
- If you entered a letter incorrectly and want to change it, press **◀** or **▶** to move the cursor to the incorrect character, press **Clear/Back**.

Press key	One time	Two times	Three times	Four times
2	A	B	C	2
3	D	E	F	3
4	G	H	I	4
5	J	K	L	5
6	M	N	O	6
7	P	Q	R	S
8	T	U	V	8
9	W	X	Y	Z



- f** Press **Stop/Exit**.



Note

- If you make a mistake and want to start again, press **Stop/Exit** and go back to **a**.

11

Set tone or pulse dialling mode

- a** Press **Menu**.
- b** Press **0**.
- c** Press **4**.
- d** Press **▲** or **▼** to choose **Pulse** (or **Tone**). Press **OK**.
- e** Press **Stop/Exit**.

12

Set the telephone line type

- a** Press **Menu**.
- b** Press **0**.
- c** Press **6**.
- d** Press **▲** or **▼** to choose **Normal**, **PBX** or **ISDN**. Press **OK**.
- e** Press **Stop/Exit**.

For Windows® Users:

Now go to

Page 9

For Mac OS® Users:

Now go to

Page 11



For USB Interface Users

(For Windows® 2000 Professional/XP/XP Professional x64 Edition/
Windows Vista®)

13

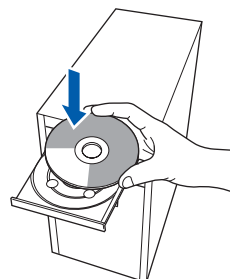
Before you install

- a** Make sure that your computer is ON and you are logged on with Administrator rights.
- b** Disconnect the machine from the power socket and from your computer, if you already connected an interface cable.

14

Install MFL-Pro Suite

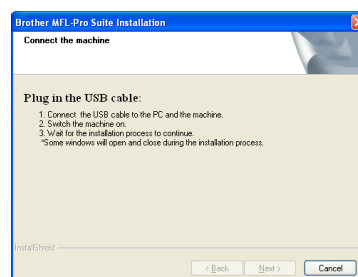
- a** Put the supplied CD-ROM into your CD-ROM drive. If the model name screen appears, choose your machine. If the language screen appears, choose your language.

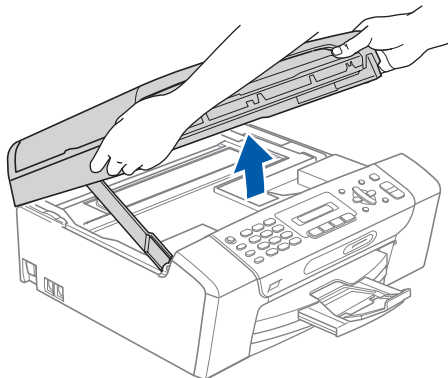
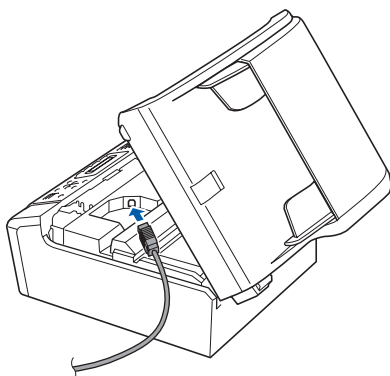
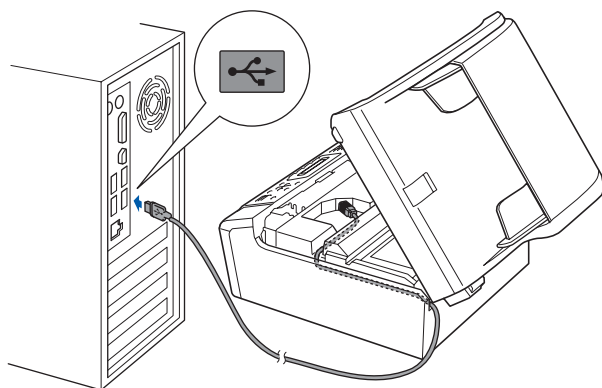


Note

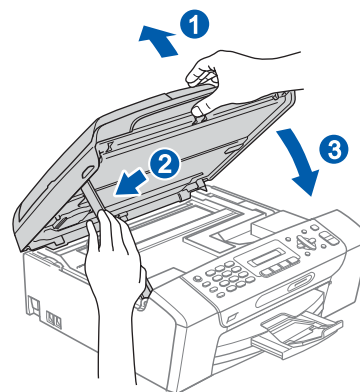
*If the Brother screen does not appear automatically, go to **My Computer (Computer)**, double-click the CD-ROM icon, and then double-click **start.exe**.*

- b** The CD-ROM main menu will appear. Click **Install MFL-Pro Suite**.
- c** When the ScanSoft™ PaperPort™ 11SE **License Agreement** window appears, click **Yes** if you agree to the Software **License Agreement**.
- d** The installation of ScanSoft™ PaperPort™ 11SE will automatically start and is followed by the installation of MFL-Pro Suite.
- e** When the Brother MFL-Pro Suite Software **License Agreement** window appears, click **Yes** if you agree to the Software **License Agreement**.
- f** Choose **Standard**, and then click **Next**. The installation continues.
- g** When this screen appears, go to the next step.



**15****Connect the USB cable****a****b****c****Important**

Make sure that the cable does not restrict the cover from closing, or an error may occur.

d**16****Connect the power cord****a**

Connect the power cord.
The installation will continue automatically.
The installation screens appear one after another.

Important

DO NOT cancel any of the screens during the installation. It may take a few seconds for all screens to appear.

b

When the **On-Line Registration** screen is displayed, make your selection and follow the on-screen instructions.

17**Finish and restart****a**

Click **Finish** to restart your computer.
After restarting the computer, you must be logged on with Administrator rights.

Finish

The installation is now complete.

Now go to

Proceed to Install Optional Applications on page 13.



For USB Interface Users (For Mac OS® X 10.2.4 or greater)

13 Before you install

- a** Make sure your machine is connected to the power and your Macintosh® is ON. You must be logged on with Administrator rights.

Important

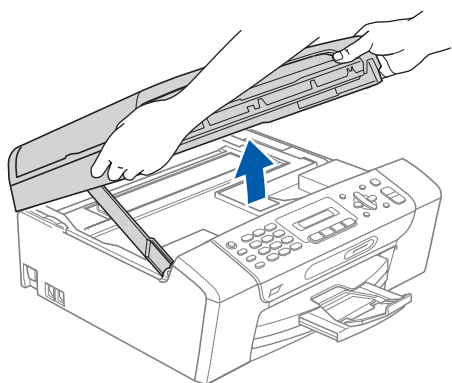
- For Mac OS® X 10.2.0 to 10.2.3 users, upgrade to Mac OS® X 10.2.4 or greater. (For the latest information for Mac OS® X, visit <http://solutions.brother.com/>)
- Make sure there are no memory cards or a USB Flash memory drive inserted.

14 Connect the USB cable

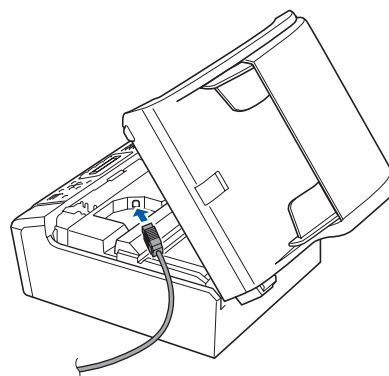
Important

- DO NOT connect the machine to a USB port on a keyboard or a non-powered USB hub.
- Connect the machine directly to your Macintosh®.

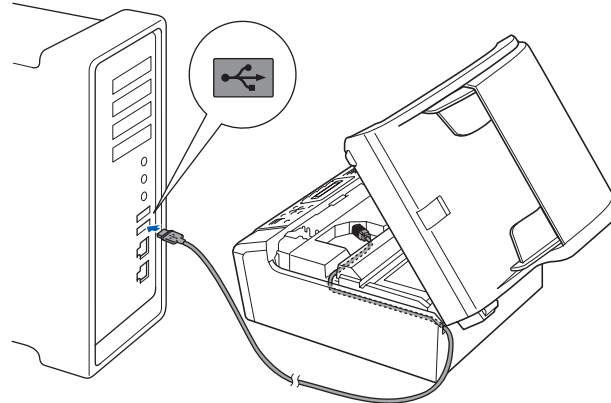
a



b



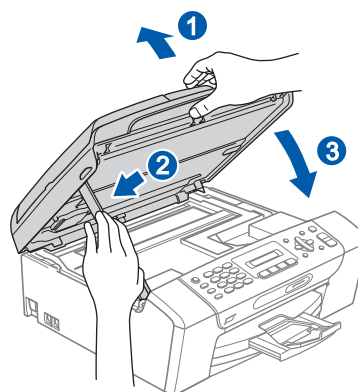
c



Important

Make sure that the cable does not restrict the cover from closing, or an error may occur.

d

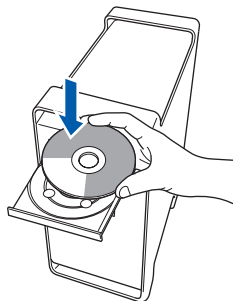




15

Install MFL-Pro Suite

a



b

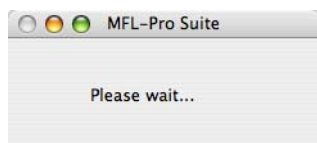
Double-click the **Start Here OSX** icon to install.

**Note**

*Please wait, it will take a few seconds for the software to install. After the installation, click **Restart** to finish installing the software.*

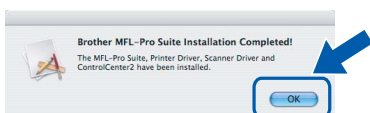
c

The Brother software will search for the Brother device. During this time the following screen will appear.



d

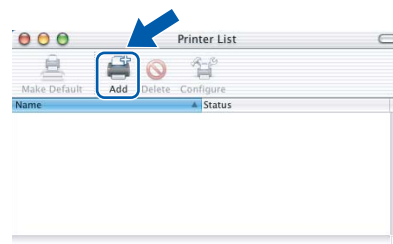
When this screen appears, click **OK**.



For Mac OS® X 10.3.x or greater, the installation of MFL-Pro Suite is now complete.

e

For Mac OS® X 10.2.4 to 10.2.8 users, click **Add**.



f

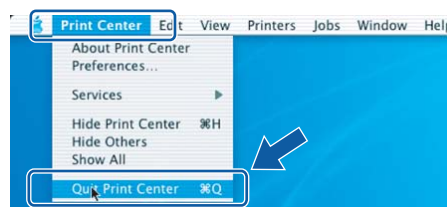
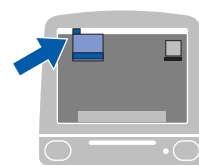
Choose **USB**.

g

Choose **XXX-XXXX** (where XXX-XXXX is your model name), and then click **Add**.

h

Click **Print Center**, then **Quit Print Center**.



The installation of MFL-Pro Suite is now complete.

Finish

The installation is now complete.

1

Install FaceFilter Studio supported by Reallusion, Inc


Important

- The machine must be ON and connected to the computer.
- The computer must be connected to the Internet.

- a Open the main menu again by ejecting and then reinserting the CD-ROM or by double-clicking the **start.exe** program from the root folder.
- b The CD-ROM main menu will appear. Choose your language and then click **Additional Applications**.
- c Click the **FaceFilter Studio** button to install.

2

Install FaceFilter Studio Help

- a To run FaceFilter Studio, go to **Start/All Programs/Reallusion/FaceFilter Studio** on your computer.
- b Click the  button on the upper right corner of the screen.
- c Click **Check for updates** to go to the Reallusion update web page.



- d Click the **Download** button and choose a folder to save the file in.
- e Close FaceFilter Studio before you start the installer for FaceFilter Studio Help. Double-click the downloaded file from the folder you specified and follow the on-screen instructions for installation.

Note

To view the complete FaceFilter Studio Help, choose **Start/All Programs/Reallusion/FaceFilter Studio/FaceFilter Studio Help** on your computer.

3

Install BookScan&Whiteboard Suite supported by Reallusion, Inc

Important

- The machine must be ON and connected to the computer.
- The computer must be connected to the Internet.

- a** Open the main menu again by ejecting and then reinserting the CD-ROM or by double-clicking the **start.exe** program from the root folder.
- b** The CD-ROM main menu will appear. Choose your language and then click **Additional Applications**.
- c** Click the **BookScan&Whiteboard Suite** button to install.

Choosing a location

Put your machine on a flat, stable surface that is free of vibration and shocks, such as a desk. Put the machine near a telephone socket and a standard grounded electrical socket. Choose a location where the temperature remains between 10°C and 35°C.

WARNING

- **DO NOT** put the machine near heaters, air conditioners, refrigerators, medical equipment, chemicals or water.
- **DO NOT** connect your machine to electrical sockets on the same circuit as large appliances or other equipment that might disrupt the power supply.

CAUTION

- Avoid placing your machine in a high-traffic area.
- Avoid placing your machine on a carpet.
- **DO NOT** expose the machine to direct sunlight, excessive heat, moisture, or dust.
- **DO NOT** connect your machine to electrical sockets controlled by wall switches or automatic timers.
- Disruption of power can wipe out information in the machine's memory.
- Avoid interference sources, such as other cordless telephone systems or speakers.
- **DO NOT** tip the machine, or place it on any tilted surface. Doing this may cause ink spillage and internal damage to your machine.



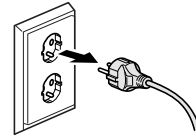
To use the machine safely

Please keep these instructions for later reference and read them before attempting any maintenance.

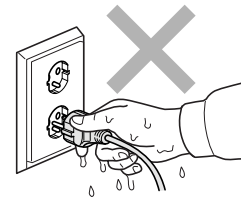
WARNING



There are high voltage electrodes inside the machine. Before you clean the inside of the machine, make sure you have unplugged the telephone line cord first and then the power cord from the electrical socket. Doing this will prevent an electrical shock.



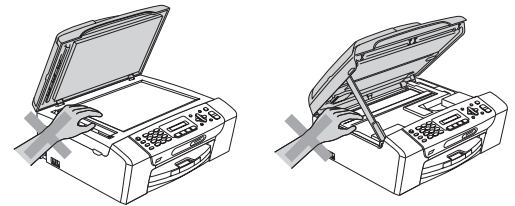
DO NOT handle the plug with wet hands. Doing this might cause an electrical shock.



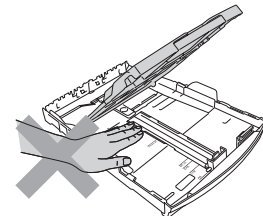
DO NOT pull on the middle of the AC power cord. Doing this might cause an electrical shock.



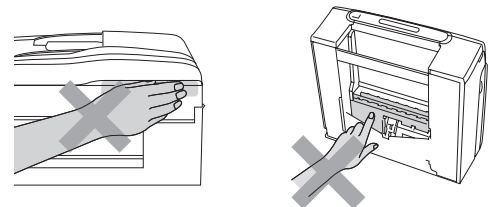
DO NOT put your hands on the edge of the machine under the document cover or the scanner cover. Doing this may cause injury.



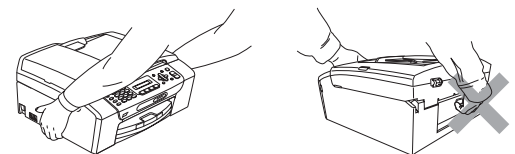
DO NOT put your hands on the edge of the paper tray under the paper tray cover. Doing this may cause injury.



DO NOT touch the area shaded in the illustration. Doing this may cause injury.



When moving the machine you must lift it from the base, by placing a hand at each side of the unit as shown in the illustration. DO NOT carry the machine by holding the scanner cover or the Jam clear cover.



DO NOT use flammable substances, any type of spray, liquid or aerosol cleaners to clean the inside or outside of the machine. Doing this may cause a fire or electrical shock.



Safety and Legal



If the machine becomes hot, releases smoke, or generates any strong smells, immediately unplug the machine from the electrical socket. Call your Brother dealer or Brother Customer Service.



If metal objects, water or other liquids get inside the machine, immediately unplug the machine from the electrical socket. Call your Brother dealer or Brother Customer Service.



Use caution when installing or modifying telephone lines. Never touch telephone wires or terminals that are not insulated unless the telephone line has been unplugged at the wall socket. Never install telephone wiring during a lightning storm. Never install a telephone wall socket in a wet location.



This product must be installed near an electrical socket that is easily accessible. In case of an emergency, you must unplug the power cord from the electrical socket to shut off the power completely.



This product should be connected to an AC power source within the range indicated on the rating label. DO NOT connect it to a DC power source or inverter. If you are not sure, contact a qualified electrician.



Always make sure the plug is fully inserted.



DO NOT use the machine if the power cord is frayed or damaged, doing so may cause a fire.



When using your telephone equipment, basic safety precautions should always be followed to reduce the risk of fire, electric shock and injury to people, including the following:

- 1 DO NOT use this product near water, for example, near a bath tub, wash bowl, kitchen sink or washing machine, in a wet basement or near a swimming pool.
- 2 Avoid using this product during an electrical storm. There may be a remote risk of electric shock from lightning.
- 3 DO NOT use this product to report a gas leak in the vicinity of the leak.
- 4 DO NOT dispose of batteries in a fire. They may explode. Check with local codes for possible special disposal instructions.

Important safety instructions

- 1 Read all of these instructions.
- 2 Save them for later reference.
- 3 Follow all warnings and instructions marked on the product.
- 4 DO NOT use this product near water.
- 5 DO NOT place this product on an unstable cart, stand, or table. The product may fall, causing serious damage to the product.
- 6 Slots and openings in the cabinet and the back or bottom are provided for ventilation. To ensure reliable operation of the product and to protect it from overheating, these openings must not be blocked or covered. The openings should never be blocked by placing the product on a bed, sofa, rug, or other similar surface. This product should never be placed near or over a radiator or heater. This product should never be placed in a built-in installation unless adequate ventilation is provided.
- 7 Use only the power cord supplied with this machine.
- 8 This product is equipped with a 3-wire grounded plug, a plug having a third (grounded) pin. This plug will only fit into a grounded power outlet. This is a safety feature. If you are unable to insert the plug into the outlet, call your electrician to replace your obsolete outlet. DO NOT defeat the purpose of the grounded plug.
- 9 DO NOT allow anything to rest on the power cord. DO NOT place this product where people can walk on the cord.
- 10 DO NOT place anything in front of the machine that will block received faxes. DO NOT place anything in the path of received faxes.
- 11 Wait until pages have exited the machine before picking them up.
- 12 Unplug this product from the power socket and refer all servicing to Brother Authorized Service Personnel under the following conditions:
 - If liquid has been spilled into the product.
 - If the product has been exposed to rain or water.
 - If the product does not operate normally when the operating instructions are followed, adjust only those controls that are covered by the operating instructions. Incorrect adjustment of other controls may result in damage and will often require extensive work by a qualified technician to restore the product to normal operation.
 - If the product has been dropped or the casing has been damaged.
 - If the product exhibits a distinct change in performance, indicating a need for service.
- 13 To protect your product against power surges, we recommend the use of a power protection device (Surge Protector).
- 14 To reduce the risk of fire, electric shock and injury to people, note the following:
 - DO NOT use this product near appliances that use water, a swimming pool, or in a wet basement.

IMPORTANT - For your safety

To ensure safe operation, the supplied three-pin plug must be inserted only into a standard three-pin electrical socket that is effectively grounded through the normal household wiring.

The fact that the equipment operates satisfactorily does not imply that the power is grounded and that the installation is completely safe. For your safety, if in any doubt about the effective grounding of the power, consult a qualified electrician.

Warning - This machine must be earthed.

The wires in the mains lead are coloured in line with the following code:

- Green and Yellow: Earth
- Blue: Neutral
- Brown: Live

If in any doubt, call a qualified electrician.

Regulations

EC Declaration of Conformity under the R & TTE Directive



EC Declaration of Conformity

Manufacturer
Brother Industries, Ltd.
15-1, Naeshiro-cho, Mizuho-ku, Nagoya 467-8561, Japan

Plant
Brother Industries (Shen Zhen) Ltd
G02414-1, Bao Chang Li Bonded Transportation Industrial Park,
Bao Long Industrial Estate, Longgang, Shenzhen, China

Herewith declare that:

Products description : Facsimile Machine
Model Name : MFC-250C, MFC-290C, MFC-297C

are in conformity with provisions of the R & TTE Directive (1999/5/EC) and we declare compliance with the following standards :

Standards applied :
Harmonized : Safety EN60950-1:2001+A11:2004


EMC EN55022: 2006 Class B
EN55024: 1998 +A1: 2001 +A2: 2003
EN61000-3-2: 2006
EN61000-3-3: 1995 +A1: 2001 +A2: 2005

Year in which CE marking was first affixed : 2008

Issued by : Brother Industries, Ltd.

Date : 17th March , 2008

Place : Nagoya, Japan

Signature : 

Junji Shiota
General Manager
Quality Management Dept.
Printing & Solutions Company

Radio interference

This product complies with EN55022 (CISPR Publication 22) /Class B. When connecting the machine to a computer, ensure that you use a USB cable which does not exceed 2.0 m in length.

EU Directive 2002/96/EC and EN50419



European
Union Only

This equipment is marked with the above recycling symbol. It means that at the end of the life of the equipment you must dispose of it separately at an appropriate collection point and not place it in the normal domestic unsorted waste stream. This will benefit the environment for all. (European Union only)

International ENERGY STAR® Compliance Statement

The purpose of the International ENERGY STAR® Program is to promote the development and popularization of energy-efficient office equipment. As an ENERGY STAR® Partner, Brother Industries, Ltd. has determined that this product meets the ENERGY STAR® guidelines for energy efficiency.



Legal limitations for copying

It is an offence to make reproductions of certain items or documents with the intent to commit fraud. This memorandum is intended to be a guide rather than a complete list. We suggest you check with relevant legal authorities if in doubt about a particular item or document.

The following are examples of documents which may not be copied:

- Money
- Bonds or other certificates of indebtedness
- Certificates of Deposit
- Armed Forces Service or Draft papers.
- Passports
- Postage Stamps (cancelled or uncanceled)
- Immigration Papers
- Welfare documents
- Cheques or Drafts drawn by Governmental Agencies
- Identification Documents, badges or insignias
- Licences and Certificates of Title to motor vehicles

Copyrighted works cannot be copied. Sections of a copyrighted work can be copied for fair dealing. Multiple copies would indicate improper use.

Works of art should be considered the equivalent of copyrighted works.

Licenses and Certificates of Title to motor vehicles may not be copied under certain state/provincial laws.

Trademarks

The Brother logo is a registered trademark of Brother Industries, Ltd.

Brother is a registered trademark of Brother Industries, Ltd.

Multi-Function Link is a registered trademark of Brother International Corporation.

Windows Vista is either a registered trademark or a trademark of Microsoft Corporation in the United States and other countries.

Microsoft, Windows and Windows Server are registered trademarks of Microsoft Corporation in the United States and/or other countries.

Macintosh and TrueType are registered trademarks of Apple Inc.

Nuance, the Nuance logo, PaperPort and ScanSoft are trademarks or registered trademarks of Nuance Communications, Inc. or its affiliates in the United States and/or other countries.

Presto! PageManager is a registered trademark of NewSoft Technology Corporation.

PictBridge is a trademark.

FaceFilter Studio is a trademark of Reallusion, Inc.

Each company whose software title is mentioned in this manual has a Software License Agreement specific to its proprietary programs.

All other brand and product names mentioned in this manual are trademarks or registered trademarks of their respective companies.

Compilation and Publication

Under the supervision of Brother Industries, Ltd., this manual has been compiled and published, covering the latest product descriptions and specifications.

The contents of this manual and the specifications of this product are subject to change without notice.

Brother reserves the right to make changes without notice in the specifications and materials contained herein and shall not be responsible for any damages (including consequential) caused by reliance on the materials presented, including but not limited to typographical and other errors relating to the publication.

Copyright and License

©2008 Brother Industries, Ltd.