

Before you can use the machine, read this Quick Setup Guide for the correct setup and installation.

**WARNING**

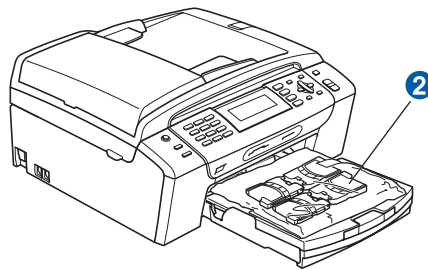
Warnings tell you what to do to prevent possible personal injury.

## Important

**DO NOT connect the USB cable yet (if you are using a USB cable).**

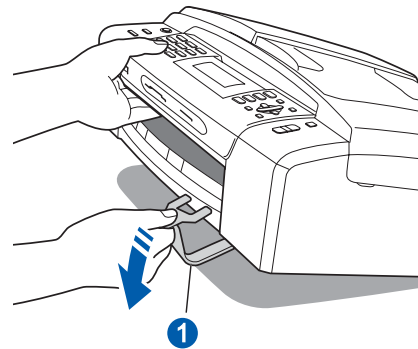
**1**

### Unpack the machine and check the components

**WARNING**

Plastic bags are used in the packaging of your machine. To avoid danger of suffocation, please keep these bags away from babies and children.

- a** Remove the protective tape and film covering the scanner glass.
- b** Remove the green protective packing **1** by lifting the front of the machine and then pulling down on the packing part.
- c** Remove the plastic bag **2** containing the ink cartridges from on top of the paper tray.
- d** Make sure you have all components.

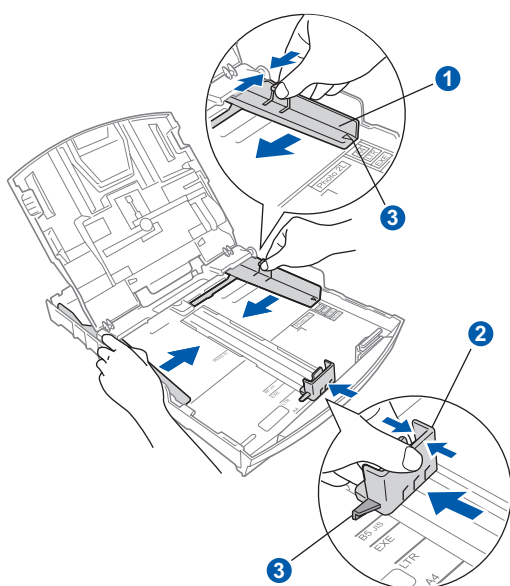


## 2

### Load plain A4 paper

- a** Pull the paper tray completely out of the machine.
- b** Open the paper tray cover.
- c** With both hands, gently press and slide the paper side guides **1** and then the paper length guide **2** to fit the paper size.

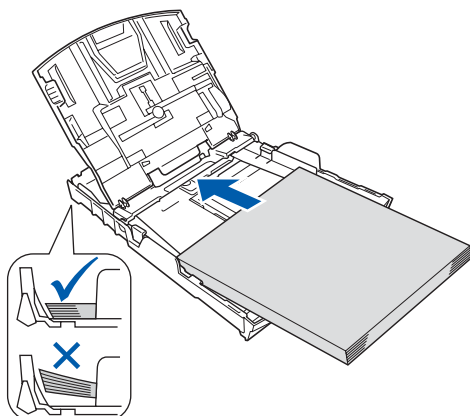
Make sure that the triangular marks **3** on the paper side guides **1** and paper length guide **2** line up with the mark for the paper size you are using.



- d** Fan the stack of paper well to avoid paper jams and misfeeds.
- e** Check that the paper is flat in the tray.

#### Important

Do not push the paper in too far.



- f** Gently adjust the paper side guides to the paper with both hands.

## g

Close the paper tray cover.

## h

*Slowly* push the paper tray completely into the machine.

## i

While holding the paper tray in place, pull out the paper support until it clicks, and then unfold the paper support flap.

## 3

### Connect the power cord and telephone line

#### Important

**DO NOT** connect the USB cable yet (if you are using a USB cable).

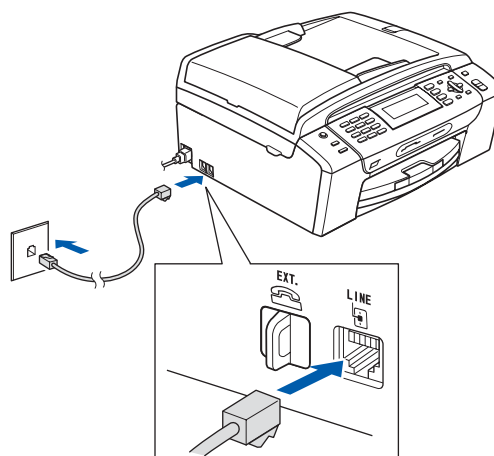
## a

Connect the power cord.

#### ! WARNING

The machine must be fitted with an earthed plug.

## b



#### ! WARNING

Since the machine is grounded through the power outlet, you can protect yourself from potentially hazardous electrical conditions on the telephone network by keeping the power cord connected to your machine when you connect it to a telephone line. Similarly, you can protect yourself when you want to move your machine by disconnecting the telephone line first and then the power cord.

#### Important

The telephone line cord **MUST** be connected to the socket on the machine marked **LINE**.

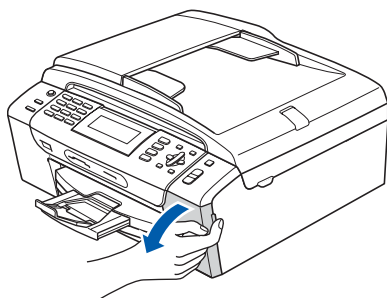
# 4

## Install the ink cartridges

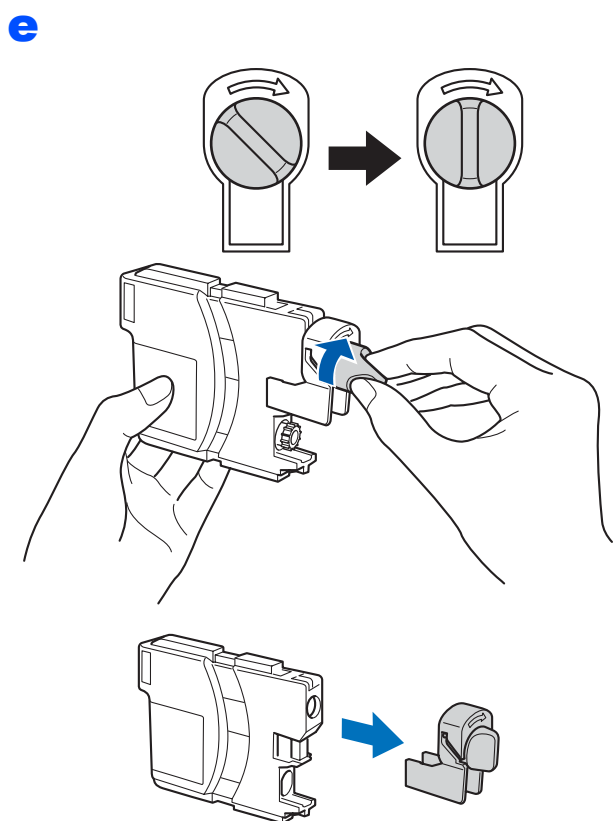
### ! WARNING

If ink gets in your eyes, wash them out with water at once, and if irritation occurs consult a doctor.

- a** Make sure that the power is turned on.
- b** Open the ink cartridge cover.



- c** Remove the green protective part.
- d** Unpack the ink cartridge.



**f**

Take care to match the colour of the lever with the cartridge colour.

**g**

Install each ink cartridge in the direction of the arrow on the label.

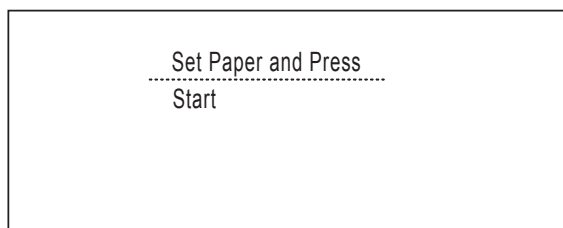
**h**

Gently push the ink cartridge until it clicks. After all the ink cartridges are installed close the ink cartridge cover.

# 5

## Check the print quality

**a**



Press **Colour Start**.

**b**

Check the quality of the four colour blocks on the sheet. (black/yellow/cyan/magenta)

**c**

If all lines are clear and visible, press **1** (Yes) on the dial pad to finish the quality check.

If you can see missing short lines, press **2** (No) on the dial pad and go to **d**.

**d**

The LCD asks you if the print quality is OK for black and colour. Press **1** (Yes) or **2** (No) on the dial pad.

**e**

Press **1** (Yes), the machine will then start cleaning the colours.

**f**

After cleaning is finished, press **Colour Start**. The machine starts printing the Print Quality Check Sheet again. Go back to **b**.

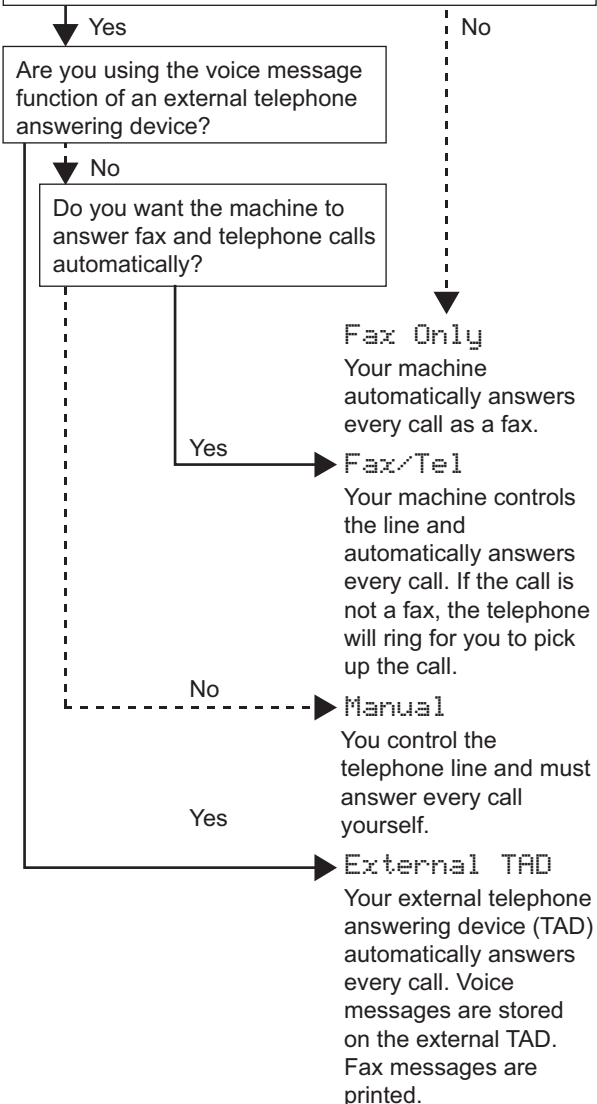
## 6 Choose Your Language

You can select the display language of your LCD messages

- a** Press **Menu**.
- b** Press **▲** or **▼** to select **Initial Setup**. Press **OK**.
- c** Press **▲** or **▼** to select **Local Language**. Press **OK**.
- d** Press **▲** or **▼** to select your language. Press **OK**.
- e** Press **Stop/Exit**.

## 7 Choose a Receive Mode

Do you want to use the telephone features of your machine (if available) or an external telephone or external telephone answering device connected on the same line as the machine?



- a** Press **Menu**.
- b** Press **▲** or **▼** to choose **Initial Setup**. Press **OK**.
- c** Press **▲** or **▼** to choose **Receive Mode**.
- d** Press **◀** or **▶** to choose the receive mode. Press **OK**.
- e** Press **Stop/Exit**.

# 8

## Set the date and time

- a** Press **Menu**.
- b** Press **▲** or **▼** to choose `Initial Setup`. Press **OK**.
- c** Press **▲** or **▼** to choose `Date&Time`. Press **OK**.
- d** Enter the last two digits of the year on the dial pad, and then press **OK**.
- e** Repeat for Month and Day, and Hours and Minutes in 24-hour format.
- f** Press **Stop/Exit**.

# 9

## Enter personal information (station ID)

You should store your name and fax number to be printed on all fax pages that you send.

- a** Press **Menu**.
- b** Press **▲** or **▼** to choose `Initial Setup`. Press **OK**.
- c** Press **▲** or **▼** to choose `Station ID`. Press **OK**.
- d** Enter your fax number (up to 20 digits) on the dial pad, and then press **OK**. To enter a “+” for international codes, press **\***.
- e** Enter your name (up to 20 characters) using the dial pad, and then press **OK**.
- f** Press **Stop/Exit**.



### Note

*If you make a mistake and want to start again, press **Stop/Exit** and go back to **a**.*

# 10

## Set tone or pulse dialling mode

- a** Press **Menu**.
- b** Press **▲** or **▼** to choose **Initial Setup**. Press **OK**.
- c** Press **▲** or **▼** to choose **Tone/Pulse**.
- d** Press **◀** or **▶** to choose **Pulse (or Tone)**. Press **OK**.
- e** Press **Stop/Exit**.

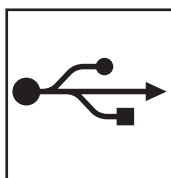
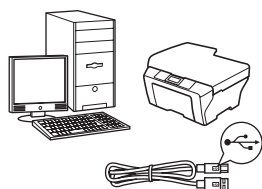
# 11

## Set the telephone line type

- a** Press **Menu**.
- b** Press **▲** or **▼** to choose **Initial Setup**. Press **OK**.
- c** Press **▲** or **▼** to choose **Phone Line Set**.
- d** Press **◀** or **▶** to choose **Normal, PBX or ISDN**. Press **OK**.
- e** Press **Stop/Exit**.

# 12

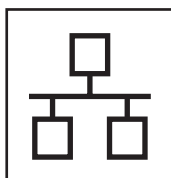
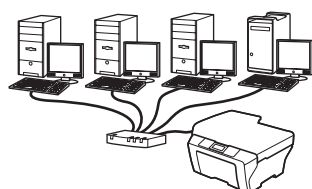
## Choose your connection type



### For USB interface cable

Windows<sup>®</sup>, go to page 8

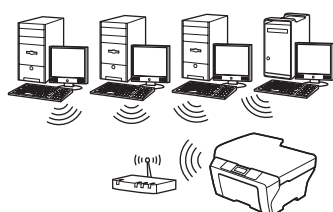
Macintosh<sup>®</sup>, go to page 10



### For Wired Network

Windows<sup>®</sup>, go to page 12

Macintosh<sup>®</sup>, go to page 14



### For Wireless Network

Windows<sup>®</sup> and Macintosh<sup>®</sup>,  
go to page 16

Windows<sup>®</sup>  
USB

Macintosh<sup>®</sup>

Windows<sup>®</sup>  
Wired Network

Macintosh<sup>®</sup>

Wireless Network



## For USB Interface Users

(For Windows® 2000 Professional/XP/XP Professional x64 Edition/  
Windows Vista®)

### 13

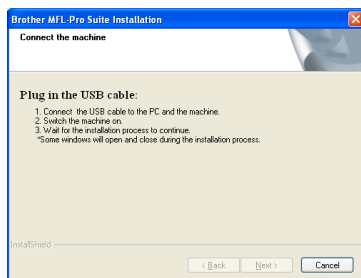
#### Before you install

- a** Make sure that your computer is ON and you are logged on with Administrator rights.
- b** Disconnect the machine from the power socket and from your computer, if you already connected an interface cable.

### 14

#### Install MFL-Pro Suite

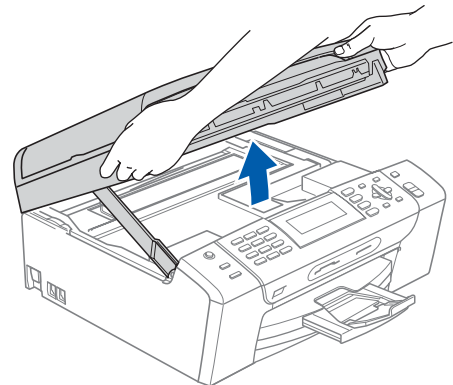
- a** Put the supplied CD-ROM into your CD-ROM drive. Follow the on-screen instructions.
- b** The CD-ROM main menu will appear. Click **Install MFL-Pro Suite**.
- c** Follow the on-screen instructions.
- d** Choose **Local Connection**, and then click **Next**. The installation continues.
- e** When this screen appears, go to the next step.



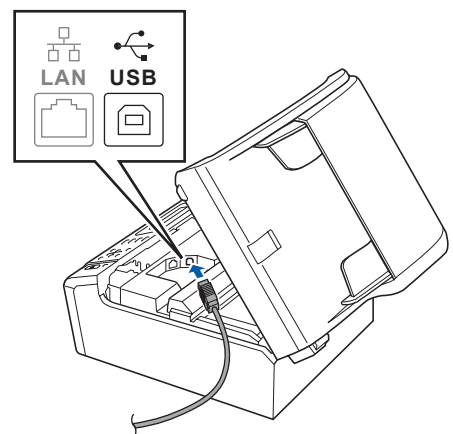
### 15

#### Connect the USB cable

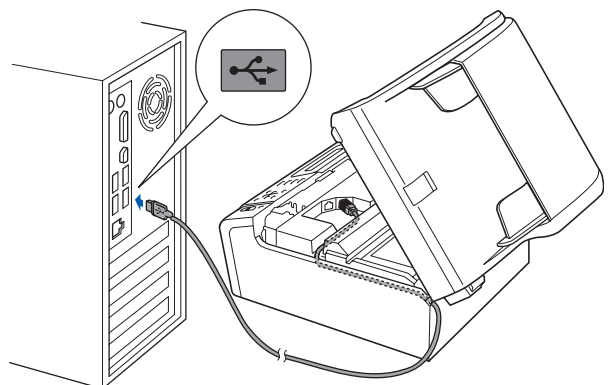
**a**



**b**



**c**



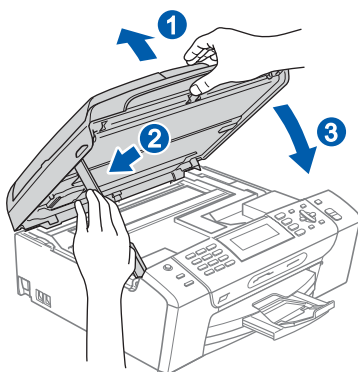
#### Important

**Make sure that the cable does not restrict the cover from closing, or an error may occur.**





d



## 16

## Connect the power cord

- a** Connect the power cord.  
The installation will continue automatically.  
The installation screens appear one after another.

## Important

**DO NOT** cancel any of the screens during the installation. It may take a few seconds for all screens to appear.

- b** When the **On-Line Registration** screen is displayed, make your selection and follow the on-screen instructions.

## 17

## Finish and restart

- a** Click **Finish** to restart your computer.  
After restarting the computer, you must be logged on with Administrator rights.

**Finish**

The installation is now complete.

**Now go to**

Proceed to Install Optional Applications on page 22.



## For USB Interface Users (For Mac OS® X 10.2.4 or greater)

### 13

#### Before you install

- a** Make sure your machine is connected to the power and your Macintosh® is ON. You must be logged on with Administrator rights.

##### Important

**Make sure there are no memory cards or a USB Flash memory drive inserted.**

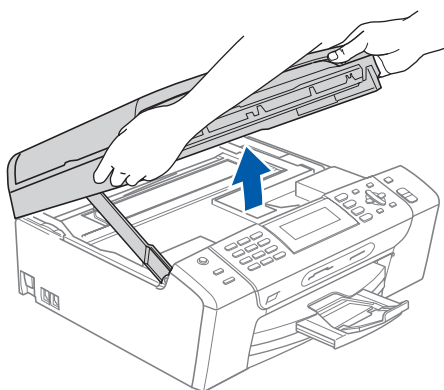
### 14

#### Connect the USB cable

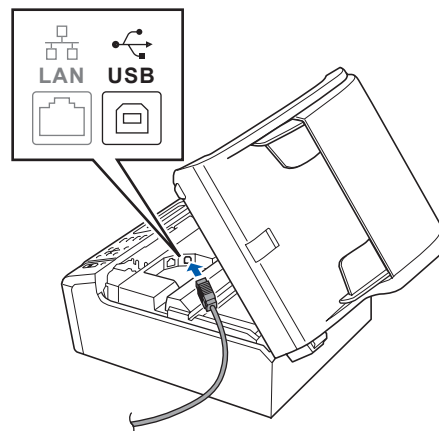
##### Important

- **DO NOT** connect the machine to a USB port on a keyboard or a non-powered USB hub.
- **Connect the machine directly to your Macintosh®.**

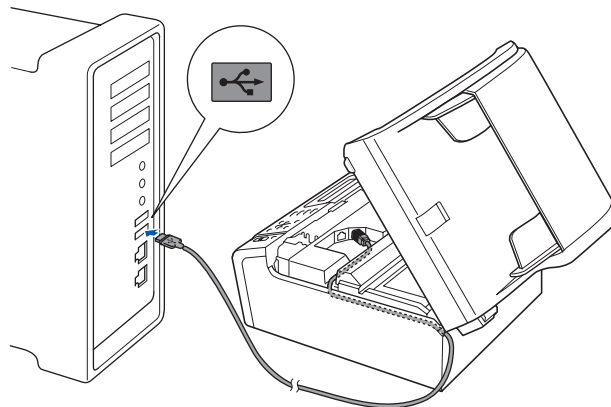
**a**



**b**



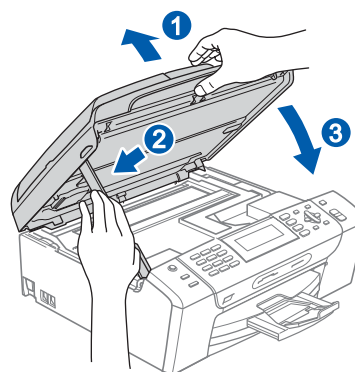
**c**



##### Important

**Make sure that the cable does not restrict the cover from closing, or an error may occur.**

**d**





## 15

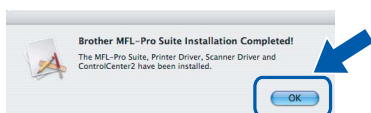
## Install MFL-Pro Suite

- a** Put the supplied CD-ROM into your CD-ROM drive.
- b** Double-click the **Start Here OSX** icon to install.
- c** Choose **Local Connection**, and then click **Next**. Follow the on-screen instructions.

**Note**

*Please wait, it will take a few seconds for the software to install. After the installation, click **Restart** to finish installing the software.*

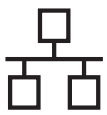
- d** The Brother software will search for the Brother device.
- e** When this screen appears, click **OK**.



- OK!** For Mac OS® X 10.3.x or greater, the installation of MFL-Pro Suite is now complete.
- f** For Mac OS® X 10.2.4 to 10.2.8 users, click **Add**.
- g** Choose **USB**.
- h** Choose **XXX-XXXX** (where XXX-XXXX is your model name), and then click **Add**.
- i** Click **Print Center**, then **Quit Print Center**.
- OK!** The installation of MFL-Pro Suite is now complete.

**Finish**

The installation is now complete.



## For Wired Network Interface Users (For Windows® 2000 Professional/XP/XP Professional x64 Edition/ Windows Vista®)

# 13

### Before you install

- a** Make sure that your computer is ON and you are logged on with Administrator rights.

## Important

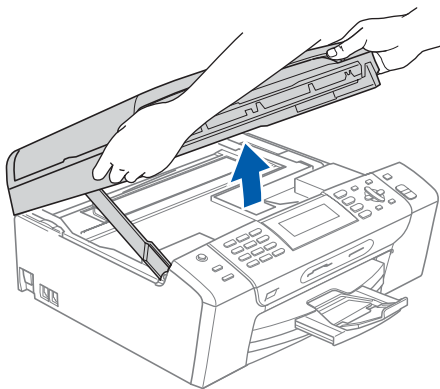
Before installation, if you are using personal firewall software (other than Windows® Firewall), anti-spyware or antivirus applications, temporarily disable them.

- b** Disconnect the machine from the power socket.

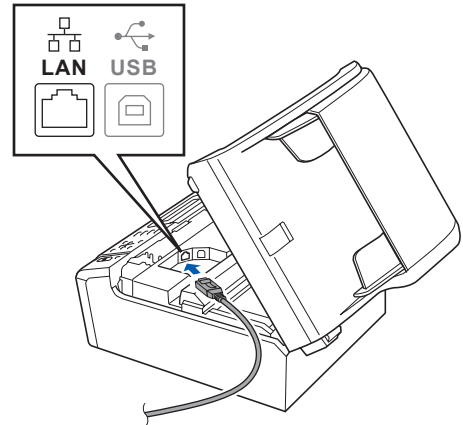
# 14

### Connect the network cable

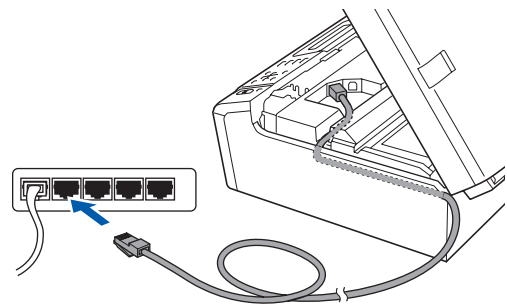
**a**



**b**



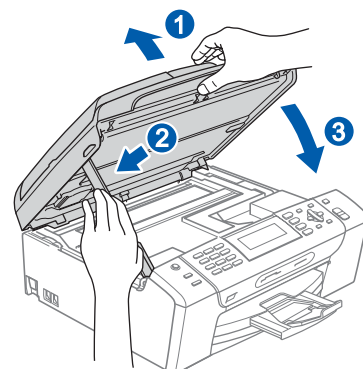
**c**

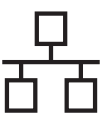


## Important

Make sure that the cable does not restrict the cover from closing, or an error may occur.

**d**





## 15

### Connect the power cord

- a** Connect the power cord.

## 16

### Install MFL-Pro Suite

- a** Put the supplied CD-ROM into your CD-ROM drive. Follow the on-screen instructions.
- b** The CD-ROM main menu will appear. Click **Install MFL-Pro Suite**.
- c** Follow the on-screen instructions.
- d** Choose **Wired Network Connection**, and then click **Next**.
- e** For Windows® XP SP2/Windows Vista® users, when **Firewall detected** screen appears, choose **Change the Firewall port settings to enable network connection and continue with the installation. (Recommended)** and click **Next**.

If you are using a firewall other than Windows® Firewall see the instructions provided with your firewall software for information on how to add the following network ports.

- For network scanning, add UDP port 54925.
- For network PC-Fax receiving, add UDP port 54926.
- If you still have trouble with your network connection, add UDP port 137.



#### Note

- If the machine is configured for your network, choose the machine from the list, and then click **Next**.  
If your machine shows **APIPA** in the **IP Address** field, click **Configure IP Address** and enter an IP address for your machine that is suitable for your network.
- If the machine is not yet configured for use on your network, the screen prompts you to click **OK**, and then the **Configure IP Address** window will appear. Enter an IP address for your machine that is suitable for your network by following the on-screen instructions.

- f** The installation of the Brother drivers will automatically start. The installation screens appear one after another.

**g**

When the **On-Line Registration** screen is displayed, make your selection and follow the on-screen instructions.

## 17

### Finish and restart

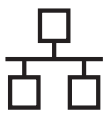
- a** Click **Finish** to restart your computer. After restarting the computer, you must be logged on with Administrator rights.

## Finish

The installation is now complete.

Now go to

Proceed to Install Optional Applications on page 22.



## For Wired Network Interface Users (For Mac OS® X 10.2.4 or greater)

### 13

#### Before you install

- a** Make sure your machine is connected to the power and your Macintosh® is ON. You must be logged on with Administrator rights.

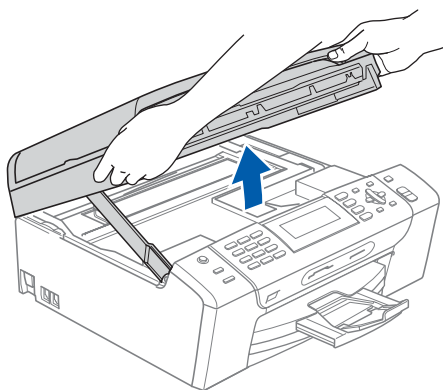
##### Important

- Make sure there are no memory cards or a USB Flash memory drive inserted.
- If you have previously set up your machine for a wireless network and then want to set it up on a wired network, you should check that the machine's Network I/F is set to Wired LAN. The wireless network interface will be inactive with this setting. On your machine, press Menu.  
Press ▲ or ▼ to choose Network and press OK.  
Press ▲ or ▼ to choose Network I/F and press OK.  
Press ▲ or ▼ to choose Wired LAN and press OK.  
Press Stop/Exit.

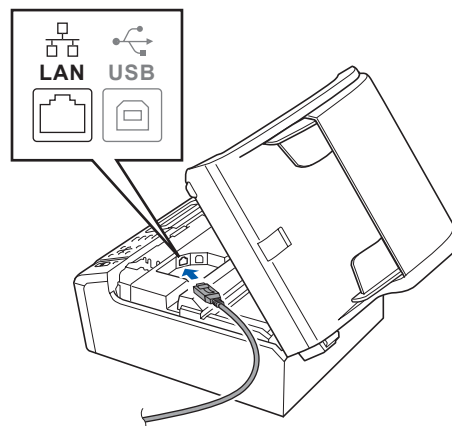
### 14

#### Connect the network cable

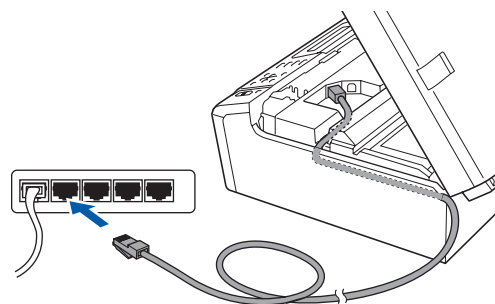
**a**



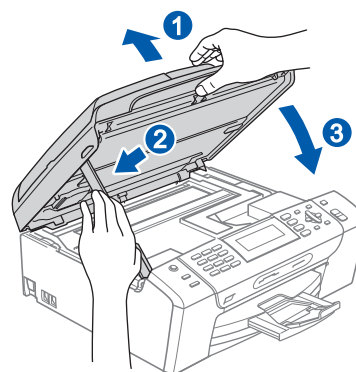
**b**

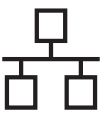


**c**



**d**





## 15

### Install MFL-Pro Suite

- a** Put the supplied CD-ROM into your CD-ROM drive.
- b** Double-click the **Start Here OSX** icon to install.
- c** Choose **Wired Network Connection**, and then click **Next**. Follow the on-screen instructions.



#### Note

*Please wait, it will take a few seconds for the software to install. After the installation, click **Restart** to finish installing the software.*

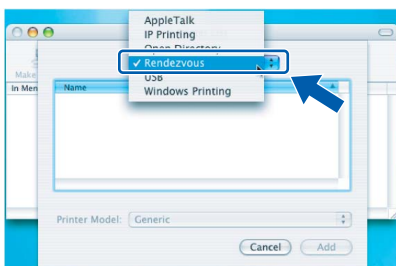
- d** The Brother software will search for the Brother device.
- e** When this screen appears, click **OK**.



- OK!** For Mac OS® X 10.3.x or greater, the installation of MFL-Pro Suite is now complete.

- f** For Mac OS® X 10.2.4 to 10.2.8 users, click **Add**.

- g** Make the selection shown below.



- h** Choose **XXX-XXXX** (where XXX-XXXX is your model name), and then click **Add**.

- i** Click **Print Center**, then **Quit Print Center**.

- OK!** The installation of MFL-Pro Suite is now complete.

## Finish

The installation is now complete.



## For Wireless Network Interface Users

### 13

### Before you begin

Although the Brother MFC-490CW can be used in a both wired and wireless network, only one of the connection methods can be used at a time.

#### Important

**If you have previously configured the wireless settings of the machine you must reset the network (LAN) settings before you can configure the wireless settings again.**

**On your machine, press Menu. Press ▲ or ▼ to choose `Network` and press OK.**

**Press ▲ or ▼ to choose `Factory Reset`, and then press OK.**

**Press 1 twice for `Yes` to accept the change.**



#### Note

*The following instructions are for infrastructure mode.*

*To set up your machine in any other wireless environment you can find instructions in the Network User's Guide on the CD-ROM.*

*You can view the Network User's Guide by following the instructions below.*

**1 Turn on your computer/Macintosh®. Insert the Brother CD-ROM into your CD-ROM drive.**

**For Windows®:**

**2 Choose your model and the language. The CD-ROM main menu will appear.**

**3 Click **Documentation**, and then click **HTML documents**.**

**For Macintosh®:**

**2 Double-click **Documentation**, and then double-click your language folder.**

**3 Double-click **top.html**.**





## 14

### Confirm your network environment (Infrastructure Mode)

The following instructions will offer two methods for installing your Brother machine in a wireless network environment. Both methods are for infrastructure mode, using a wireless router or access point that uses DHCP to assign IP addresses. Choose a configuration method and proceed to the page indicated.

- a** If your wireless router/access point does not support SecureEasySetup™, Wi-Fi Protected Setup™ or AOSS™, **write down the wireless network settings** of your access point or wireless router in the area below.

#### Important

**If you do not know this information (Network Name, WEP key or WPA2-PSK (Pre-Shared Key)), you cannot continue the wireless setup. You should see the documentation provided with your access point or wireless router, consult the router manufacturer, or your system administrator.**

SSID (Service Set ID or Network name)

---

Authentication (Open System or Shared Key)/Encryption Type (None or WEP)

WEP Key (if needed)

---

WPA/WPA2-PSK Encryption type (TKIP or AES) (if needed)

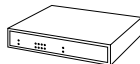
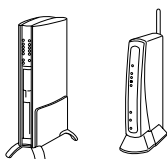
WPA/WPA2-PSK (Pre-Shared Key) (if needed)

---

Now go to

page 18

- b** If your wireless router/access point supports automatic wireless (one-push) setup (SecureEasySetup™, Wi-Fi Protected Setup™ or AOSS™), you can find instructions in the Network User's Guide on the CD-ROM. To set up your machine in any other wireless environment (Ad-hoc mode) you can find instructions in the Network User's Guide on the CD-ROM.





## Connecting the Brother machine to the wireless network

# 15

### Configure the wireless settings (Typical Wireless Setup in infrastructure mode)

- a** On your machine, press **Menu**.  
Press **▲** or **▼** to choose **Network** and press **OK**.  
Press **▲** or **▼** to choose **WLAN** and press **OK**.  
Press **▲** or **▼** to choose **Setup Wizard** and press **OK**.

When **Network I/F switched to Wireless** is displayed, press **OK** to accept.  
This will start the wireless setup wizard.  
To cancel, press **Clear/Back**.

- b** The machine will search for available SSIDs. If a list of SSIDs is displayed, use the **▲** or **▼** keys to choose the SSID you wrote down in step **14** on page 17, then press **OK**. Go to **f**.



#### Note

*It will take several seconds to display a list of available SSIDs.*

If your access point is set to not broadcast the SSID you will have to manually add the SSID name. Go to **c**.

- c** Press **▲** or **▼** to choose **<New SSID>** and press **OK**. Go to **d**.

- d** Enter the SSID you wrote down in step **14** on page 17 using the dial pad to choose each letter or number.

You can use the **◀** and **▶** keys to move the cursor left and right. For example, to enter the letter **a**, press the **2** key on the dial pad once. To enter the number **3**, press the **3** key on the dial pad seven times.

The letters appear in this order: lower case, upper case and then numbers.  
(For more information, see *Entering Text for Wireless Settings* on page 23.)

Press **OK** when you have entered all the characters.

- e** Press **▲** or **▼** to choose **Infrastructure**, then press **OK**.

**f**

Use the **▲**, **▼** and **OK** keys to choose one of the options below: If your network is configured for Authentication and Encryption you must match the settings used for your network.

- **No Authentication or Encryption:**  
Choose **Open System**, press **OK** then choose **None** for **Encryption Type?** and press **OK**. Then press **1** for **Yes** to apply your settings. Go to **i**.
- **No Authentication with WEP Encryption:**  
Choose **Open System**, press **OK** then use the **▲** or **▼** to choose **WEP** for the **Encryption Type?** and press **OK**.  
Go to **g**.
- **Authentication with WEP Encryption:**  
Choose **Shared Key** and press **OK**.  
Go to **g**.
- **Authentication with WPA/WPA2-PSK (TKIP or AES) Encryption:**  
Choose **WPA/WPA2-PSK** and press **OK**.  
Go to **h**.

**g**

Choose the appropriate key number and press **OK**. Enter the WEP key you wrote down in step **14** on page 17 using the dial pad to choose each letter or number.

You can use the **◀** and **▶** keys to move the cursor left and right. For example, to enter the letter **a**, press the **2** key on the dial pad once. To enter the number **3**, press the **3** key on the dial pad seven times.

The letters appear in this order: lower case, upper case and then numbers.  
(For more information, see *Entering Text for Wireless Settings* on page 23.)

Press **OK** when you have entered all the characters, then press **1** for **Yes** to apply your settings. Go to **i**.



**h** Press ▲ or ▼ to choose **TKIP** or **AES** for **Encryption Type?** and press **OK**. Enter the WPA/WPA2-PSK password you wrote down in step **14** on page 17 using the dial pad to choose each letter or number.

You can use the ◀ and ▶ keys to move the cursor left and right. For example, to enter the letter **a**, press the **2** key on the dial pad once. To enter the number **3**, press the **3** key on the dial pad seven times.


The letters appear in this order: lower case, upper case and then numbers.  
(For more information, see *Entering Text for Wireless Settings* on page 23.)

Press **OK** when you have entered all the characters, then press **1** for **Yes** to apply your settings. Go to **i**.

**i** Your machine will now try to connect to your wireless network using the information you have entered. If successful, **Connected** will appear briefly on the LCD.

*If your machine does not successfully connect to your network, verify your network settings collected in step **14** on page 17 then repeat **a** to **h** to make sure you have entered the correct information.*

*If your access point does not have DHCP enabled you will need to manually configure the IP address, subnet mask and gateway of the machine to suit your network. See the Network User's Guide for details.*

 **Wireless setup is now complete. A four level indicator at the top of your machine's LCD will show the wireless signal strength of your access point or router.**

**To install MFL-Pro Suite, continue to step 16.**

**For Windows® Users:**

**Now go to**

**Page 20**

**For Mac OS® Users:**

**Now go to**

**Page 21**



## Install the Drivers & Software

(For Windows® 2000 Professional/XP/XP Professional x64 Edition/  
Windows Vista®)

# 16

### Before you install MFL-Pro Suite

- a** Make sure that your computer is ON and you are logged on with Administrator rights.

## Important

**Before installation, if you are using personal firewall software (other than Windows® Firewall), anti-spyware or antivirus applications, temporarily disable them.**

# 17

### Install MFL-Pro Suite

- a** Put the supplied CD-ROM into your CD-ROM drive. Follow the on-screen instructions.
- b** The CD-ROM main menu will appear. Click **Install MFL-Pro Suite**.
- c** Follow the on-screen instructions.
- d** Choose **Wireless Network Connection**, and then click **Next**.
- e** Click on **Checked and confirmed** check box, and then click **Next**.
- f** For Windows® XP SP2/Windows Vista® users, when **Firewall detected** screen appears, choose **Change the Firewall port settings to enable network connection and continue with the installation. (Recommended)** and click **Next**.

If you are using a firewall other than Windows® Firewall see the instructions provided with your firewall software for information on how to add the following network ports.

- For network scanning, add UDP port 54925.
- For network PC-Fax receiving, add UDP port 54926.
- If you still have trouble with your network connection, add UDP port 137.



#### Note

- If the machine is configured for your network, choose the machine from the list, and then click **Next**.  
*If your machine shows **APIPA** in the **IP Address** field, click **Configure IP Address** and enter an IP address for your machine that is suitable for your network.*
- If your wireless settings fail, an error message will appear during the installation of MFL-Pro Suite and the installation will be terminated. If you encounter this failure, go to step **14** on page 17 and setup the wireless connection again.
- If you are using WEP and the LCD displayed 'Connected' but your machine is not found, make sure you entered the WEP key correctly. The WEP key is case sensitive.

**g**

The installation of the Brother drivers will automatically start. The installation screens appear one after another.

**h**

When the **On-Line Registration** screen is displayed, make your selection and follow the on-screen instructions.

# 18

### Finish and restart

**a**

Click **Finish** to restart your computer. After restarting the computer, you must be logged on with Administrator rights.

## Finish

**The installation is now complete.**

**Now go to**

**Proceed to Install Optional Applications on page 22.**



## Install the Drivers & Software (For Mac OS® X 10.2.4 or greater)

### 16 Before you install MFL-Pro Suite

- a** Make sure your machine is connected to the power and your Macintosh® is ON. You must be logged on with Administrator rights.

#### Important

- Make sure there are no memory cards or a USB Flash memory drive inserted.

### 17 Install MFL-Pro Suite

- a** Put the supplied CD-ROM into your CD-ROM drive.
- b** Double-click the **Start Here OSX** icon to install.
- c** Choose **Wireless Network Connection**, and then click **Next**.
- d** Click on the **Checked and confirmed** check box, and then click **Next**. Follow the on-screen instructions.

#### Note

Please wait, it will take a few seconds for the software to install. After the installation, click **Restart** to finish installing the software.

- e** The Brother software will search for the Brother device.

#### Note

- If your machine is not detected, go to step **14** on page 17 and setup the wireless connection again.
- If you are using WEP and the LCD displayed 'Connected' but your machine is not found, make sure you entered the WEP key correctly. The WEP key is case sensitive.

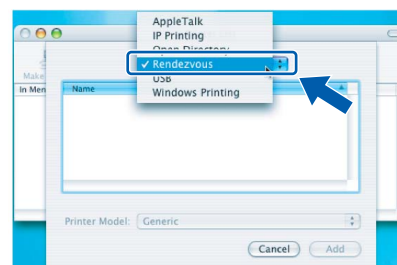
- f** When this screen appears, click **OK**.



- OK!** For Mac OS® X 10.3.x or greater, the installation of MFL-Pro Suite is now complete.

- g** For Mac OS® X 10.2.4 to 10.2.8 users, click **Add**.

- h** Make the selection shown below.



- i** Choose **XXX-XXXX** (where XXX-XXXX is your model name), and then click **Add**.

- j** Click **Print Center**, then **Quit Print Center**.

- OK!** The installation of MFL-Pro Suite is now complete.

**Finish**

The installation is now complete.


## 1 Install FaceFilter Studio supported by Reallusion, Inc

### Important

- The machine must be ON and connected to the computer.
- The computer must be connected to the Internet.

- Open the main menu again by ejecting and then reinserting the CD-ROM or by double-clicking the **start.exe** program from the root folder.
- The CD-ROM main menu will appear. Choose your language and then click **Additional Applications**.
- Click the **FaceFilter Studio** button to install.

## 2 Install FaceFilter Studio Help

- To run FaceFilter Studio, go to **Start/All Programs/Reallusion/FaceFilter Studio** on your computer.
- Click the  button on the upper right corner of the screen.
- Click **Check for updates** to go to the Reallusion update web page.
- Click the **Download** button and choose a folder to save the file in.
- Close FaceFilter Studio before you start the installer for FaceFilter Studio Help. Double-click the downloaded file from the folder you specified and follow the on-screen instructions for installation.

### Note

To view the complete FaceFilter Studio Help, choose **Start/All Programs/Reallusion/FaceFilter Studio/FaceFilter Studio Help** on your computer.

## 3 Install BookScan&Whiteboard Suite supported by Reallusion, Inc

### Important

- The machine must be ON and connected to the computer.
- The computer must be connected to the Internet.

- Open the main menu again by ejecting and then reinserting the CD-ROM or by double-clicking the **start.exe** program from the root folder.
- The CD-ROM main menu will appear. Choose your language and then click **Additional Applications**.
- Click the **BookScan&Whiteboard Suite** button to install.

## Restore the network settings to factory default

To restore all network settings of the internal Print/Scan server to factory default, please follow the steps below.

- a** Make sure the machine is not operating, then disconnect all the cables from the machine (except the power cord).
- b** Press **Menu**.
- c** Press **▲** or **▼** to choose **Network**.  
Press **OK**.
- d** Press **▲** or **▼** to choose **Factory Reset**.  
Press **OK**.
- e** Press **1** to choose **Yes**.
- f** Press **1** to choose **Yes**.
- g** The machine will restart, re-connect cables once this is complete.

## Entering Text for Wireless Settings

Most number keys have three or four letters printed on them. The keys for **0**, **#** and **\*** do not have printed letters because they are used for special characters.

By pressing the proper number key repeatedly, you can access the character you want.

### Putting spaces

To enter a space in a name, press **►** twice between characters.

### Making corrections

If you entered a letter incorrectly and want to change it, press **◀** or **►** to move the cursor under the incorrect character, press **Clear/Back**. Re-enter the correct character. You can also back up and insert letters.

### Repeating letters

If you need to enter a letter that is on the same key as the letter before, press **►** to move the cursor right before you press the key again.

### Special characters and symbols

Press **\***, **#** or **0** repeatedly until you see the special character or symbol you want. Press **OK** to select it.

Press **\*** for (space) ! " # \$ % & ' ( ) \* + , - . /

Press **#** for : ; < = > ? @ [ ] ^ \_

Press **0** for 0 \ { | } ~

## Choosing a location

Put your machine on a flat, stable surface that is free of vibration and shocks, such as a desk. Put the machine near a telephone socket and a standard grounded electrical socket. Choose a location where the temperature remains between 10°C and 35°C.

### WARNING

- **DO NOT** put the machine near heaters, air conditioners, refrigerators, medical equipment, chemicals or water.
- **DO NOT** connect your machine to electrical sockets on the same circuit as large appliances or other equipment that might disrupt the power supply.

### CAUTION

- Avoid placing your machine in a high-traffic area.
- Avoid placing your machine on a carpet.
- **DO NOT** expose the machine to direct sunlight, excessive heat, moisture, or dust.
- **DO NOT** connect your machine to electrical sockets controlled by wall switches or automatic timers.
- Disruption of power can wipe out information in the machine's memory.
- Avoid interference sources, such as other cordless telephone systems or speakers.
- **DO NOT** tip the machine, or place it on any tilted surface. Doing this may cause ink spillage and internal damage to your machine.





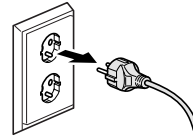
## To use the machine safely

Please keep these instructions for later reference and read them before attempting any maintenance.

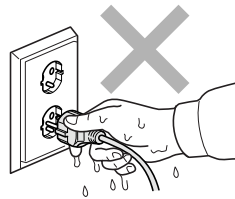
### WARNING



There are high voltage electrodes inside the machine. Before you clean the inside of the machine, make sure you have unplugged the telephone line cord first and then the power cord from the electrical socket. Doing this will prevent an electrical shock.



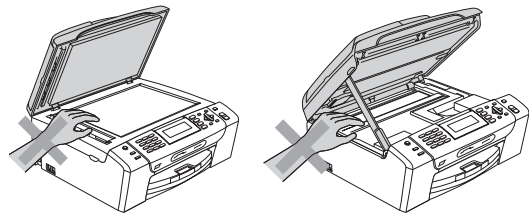
**DO NOT** handle the plug with wet hands. Doing this might cause an electrical shock.



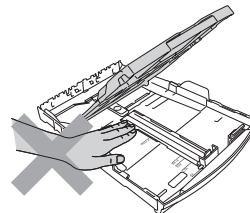
**DO NOT** pull on the middle of the AC power cord. Doing this might cause an electrical shock.



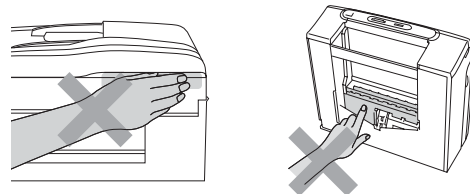
**DO NOT** put your hands on the edge of the machine under the document cover or the scanner cover. Doing this may cause injury.



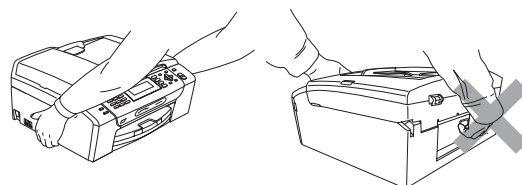
**DO NOT** put your hands on the edge of the paper tray under the paper tray cover. Doing this may cause injury.



**DO NOT** touch the area shaded in the illustration. Doing this may cause injury.



When moving the machine you must lift it from the base, by placing a hand at each side of the unit as shown in the illustration. **DO NOT** carry the machine by holding the scanner cover or the Jam clear cover.



**DO NOT** use flammable substances, any type of spray, liquid or aerosol cleaners to clean the inside or outside of the machine. Doing this may cause a fire or electrical shock.





If the machine becomes hot, releases smoke, or generates any strong smells, immediately unplug the machine from the electrical socket. Call your Brother dealer or Brother Customer Service.



If metal objects, water or other liquids get inside the machine, immediately unplug the machine from the electrical socket. Call your Brother dealer or Brother Customer Service.



Use caution when installing or modifying telephone lines. Never touch telephone wires or terminals that are not insulated unless the telephone line has been unplugged at the wall socket. Never install telephone wiring during a lightning storm. Never install a telephone wall socket in a wet location.



This product must be installed near an electrical socket that is easily accessible. In case of an emergency, you must unplug the power cord from the electrical socket to shut off the power completely.



This product should be connected to an AC power source within the range indicated on the rating label. DO NOT connect it to a DC power source or inverter. If you are not sure, contact a qualified electrician.



Always make sure the plug is fully inserted.



DO NOT use the machine if the power cord is frayed or damaged, doing so may cause a fire.



When using your telephone equipment, basic safety precautions should always be followed to reduce the risk of fire, electric shock and injury to people, including the following:

- 1 DO NOT use this product near water, for example, near a bath tub, wash bowl, kitchen sink or washing machine, in a wet basement or near a swimming pool.
- 2 Avoid using this product during an electrical storm. There may be a remote risk of electric shock from lightning.
- 3 DO NOT use this product to report a gas leak in the vicinity of the leak.
- 4 DO NOT dispose of batteries in a fire. They may explode. Check with local codes for possible special disposal instructions.

## Important safety instructions

- 1 Read all of these instructions.
- 2 Save them for later reference.
- 3 Follow all warnings and instructions marked on the product.
- 4 DO NOT use this product near water.
- 5 DO NOT place this product on an unstable cart, stand, or table. The product may fall, causing serious damage to the product.
- 6 Slots and openings in the cabinet and the back or bottom are provided for ventilation. To ensure reliable operation of the product and to protect it from overheating, these openings must not be blocked or covered. The openings should never be blocked by placing the product on a bed, sofa, rug, or other similar surface. This product should never be placed near or over a radiator or heater. This product should never be placed in a built-in installation unless adequate ventilation is provided.
- 7 Use only the power cord supplied with this machine.
- 8 This product is equipped with a 3-wire grounded plug, a plug having a third (grounded) pin. This plug will only fit into a grounded power outlet. This is a safety feature. If you are unable to insert the plug into the outlet, call your electrician to replace your obsolete outlet. DO NOT defeat the purpose of the grounded plug.
- 9 DO NOT allow anything to rest on the power cord. DO NOT place this product where people can walk on the cord.
- 10 DO NOT place anything in front of the machine that will block received faxes. DO NOT place anything in the path of received faxes.
- 11 Wait until pages have exited the machine before picking them up.
- 12 Unplug this product from the power socket and refer all servicing to Brother Authorized Service Personnel under the following conditions:
  - If liquid has been spilled into the product.
  - If the product has been exposed to rain or water.
  - If the product does not operate normally when the operating instructions are followed, adjust only those controls that are covered by the operating instructions. Incorrect adjustment of other controls may result in damage and will often require extensive work by a qualified technician to restore the product to normal operation.
  - If the product has been dropped or the casing has been damaged.
  - If the product exhibits a distinct change in performance, indicating a need for service.
- 13 To protect your product against power surges, we recommend the use of a power protection device (Surge Protector).
- 14 To reduce the risk of fire, electric shock and injury to people, note the following:
  - DO NOT use this product near appliances that use water, a swimming pool, or in a wet basement.
  - DO NOT attempt to operate the machine during an electrical storm or gas leak.

## IMPORTANT - For your safety

To ensure safe operation, the supplied three-pin plug must be inserted only into a standard three-pin electrical socket that is effectively grounded through the normal household wiring.

The fact that the equipment operates satisfactorily does not imply that the power is grounded and that the installation is completely safe. For your safety, if in any doubt about the effective grounding of the power, consult a qualified electrician.

## Warning - This machine must be earthed.

The wires in the mains lead are coloured in line with the following code:

- Green and Yellow: Earth
- Blue: Neutral
- Brown: Live

If in any doubt, call a qualified electrician.

## Regulations

### EC Declaration of Conformity under the R & TTE Directive



#### EC Declaration of Conformity

**Manufacturer**  
Brother Industries, Ltd.  
15-1, Naeshiro-cho, Mizuho-ku, Nagoya 467-8561, Japan

**Plant**  
Brother Industries (Shen Zhen) Ltd  
G02414-1, Bao Chang Li Bonded Transportation Industrial Park,  
Bao Long Industrial Estate, Longgang, Shenzhen, China

Herewith declare that:

**Products description** : Facsimile Machine  
**Model Name** : MFC-490CW

is in conformity with provisions of the R & TTE Directive (1999/5/EC) and we declare compliance with the following standards:

**Standards applied :**

**Harmonized :** Safety EN60950-1:2001+A11:2004

EMC EN55022: 2006 Class B  
EN55024: 1998 +A1: 2001 +A2: 2003  
EN61000-3-2: 2006  
EN61000-3-3: 1995 +A1: 2001 +A2: 2005

Radio EN301 489-1 V1.6.1  
EN301 489-17 V1.2.1  
EN300 328 V1.7.1

**Year in which CE marking was first affixed :** 2008

**Issued by** : Brother Industries, Ltd.

**Date** : 20th March, 2008

**Place** : Nagoya, Japan

**Signature** :

Junji Shiota  
General Manager  
Quality Management Dept.  
Printing & Solutions Company

### LAN connection

#### CAUTION

DO NOT connect this product to a LAN connection that is subject to over-voltages.

### Radio interference

This product complies with EN55022 (CISPR Publication 22) /Class B. When connecting the machine to a computer, ensure that you use a USB cable which does not exceed 2.0 m in length.

### EU Directive 2002/96/EC and EN50419



European  
Union Only

This equipment is marked with the above recycling symbol. It means that at the end of the life of the equipment you must dispose of it separately at an appropriate collection point and not place it in the normal domestic unsorted waste stream. This will benefit the environment for all. (European Union only)

### International ENERGY STAR® Compliance Statement

The purpose of the International ENERGY STAR® Program is to promote the development and popularization of energy-efficient office equipment. As an ENERGY STAR® Partner, Brother Industries, Ltd. has determined that this product meets the ENERGY STAR® guidelines for energy efficiency.



## Legal limitations for copying

It is an offence to make reproductions of certain items or documents with the intent to commit fraud. This memorandum is intended to be a guide rather than a complete list. We suggest you check with relevant legal authorities if in doubt about a particular item or document.

The following are examples of documents which may not be copied:

- Money
- Bonds or other certificates of indebtedness
- Certificates of Deposit
- Armed Forces Service or Draft papers.
- Passports
- Postage Stamps (cancelled or uncanceled)
- Immigration Papers
- Welfare documents
- Cheques or Drafts drawn by Governmental Agencies
- Identification Documents, badges or insignias
- Licences and Certificates of Title to motor vehicles

Copyrighted works cannot be copied. Sections of a copyrighted work can be copied for fair dealing. Multiple copies would indicate improper use.

Works of art should be considered the equivalent of copyrighted works.

Licenses and Certificates of Title to motor vehicles may not be copied under certain state/provincial laws.

## Trademarks

The Brother logo is a registered trademark of Brother Industries, Ltd.

Brother is a registered trademark of Brother Industries, Ltd.

Multi-Function Link is a registered trademark of Brother International Corporation.

Windows Vista is either a registered trademark or a trademark of Microsoft Corporation in the United States and other countries.

Microsoft, Windows and Windows Server are registered trademarks of Microsoft Corporation in the United States and/or other countries.

Macintosh and TrueType are registered trademarks of Apple Inc.

Nuance, the Nuance logo, PaperPort and ScanSoft are trademarks or registered trademarks of Nuance Communications, Inc. or its affiliates in the United States and/or other countries.

Presto! PageManager is a registered trademark of NewSoft Technology Corporation.

PictBridge is a trademark.

FaceFilter Studio is a trademark of Reallusion, Inc.

BROADCOM, SecureEasySetup and the SecureEasySetup logo are trademarks or registered trademarks of Broadcom Corporation in the United States and/or other countries.

AOSS is a trademark of Buffalo Inc.

Wi-Fi, WPA and WPA2 are registered trademarks and Wi-Fi Protected Setup is a trademark of Wi-Fi Alliance.

Each company whose software title is mentioned in this manual has a Software License Agreement specific to its proprietary programs.

**All other brand and product names mentioned in this manual are trademarks or registered trademarks of their respective companies.**

## Compilation and Publication

Under the supervision of Brother Industries, Ltd., this manual has been compiled and published, covering the latest product descriptions and specifications.

The contents of this manual and the specifications of this product are subject to change without notice.

Brother reserves the right to make changes without notice in the specifications and materials contained herein and shall not be responsible for any damages (including consequential) caused by reliance on the materials presented, including but not limited to typographical and other errors relating to the publication.

## Copyright and License

©2008 Brother Industries, Ltd.

This product includes software developed by the following vendors:

©1983-1998 PACIFIC SOFTWARES, INC.

This product includes the "KASAGO TCP/IP" software developed by ELMIC WESCOM, Inc.

©2008 Devicescape Software, Inc.