

Before you can use the machine, read this Quick Setup Guide for the correct setup and installation.

**WARNING**

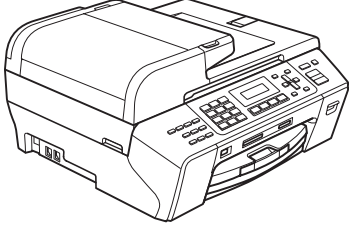

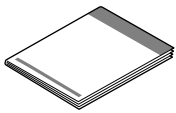
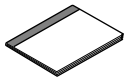
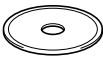



Warnings tell you what to do to prevent possible personal injury.

Important

DO NOT connect the USB cable before installing driver.

**1**

Unpack the machine and check the components

		 <p>Inbox Ink Cartridges [x4]</p>		<p>Black Yellow Cyan Magenta (Approx. 65% yield of the replacement cartridge) For details, see Consumable items in the User's Guide.</p>	 <p>Quick Setup Guide</p>						
 <p>User's Guide</p>	 <p>CD-ROM</p>	 <p>Telephone Line Cord</p>	 <p>Power Cord</p>	 <p>USB Interface Cable</p>	<table border="1"> <tr> <td>1</td> <td>2</td> <td>3</td> </tr> <tr> <td>4</td> <td>5</td> <td>6</td> </tr> </table> <p>One Touch Labels</p>	1	2	3	4	5	6
1	2	3									
4	5	6									

**WARNING**

Plastic bags are used in the packaging of your machine. To avoid danger of suffocation, please keep these bags away from babies and children.

- a** Remove the protective tape and film covering the scanner glass.
- b** Make sure you have all components.

**Note**

- The components included in the box may differ depending on your country.
- Save all packing materials and the box in case for any reason you must ship your machine.
- For a network connection you will need to purchase a network interface cable. Please use the supplied USB cable for a USB connection.
- To ensure safe operation the supplied plug must be inserted only into a standard power outlet that is properly grounded through the standard electrical wiring. Non grounded equipment may cause an electrical shock hazard, and may cause excessive electrical noise radiation.

USB cable

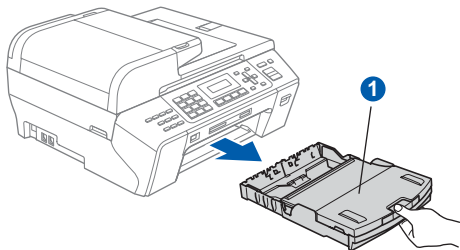
Please make sure you use a USB 2.0 cable (Type A/B) that is no more than 2 metres long.

Network cable

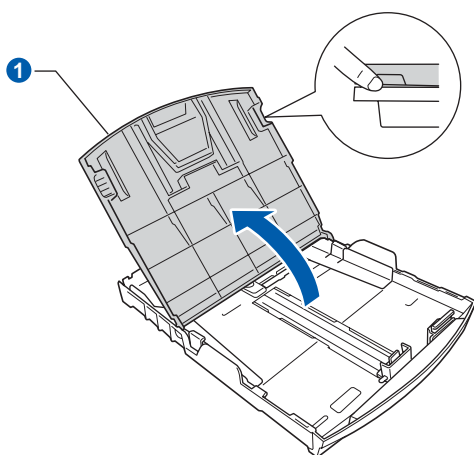
Use a straight-through Category5 (or greater) twisted-pair cable for 10BASE-T or 100BASE-TX Fast Ethernet Network.

2 Load plain A4 paper

- a** Pull the paper tray **1** completely out of the machine.

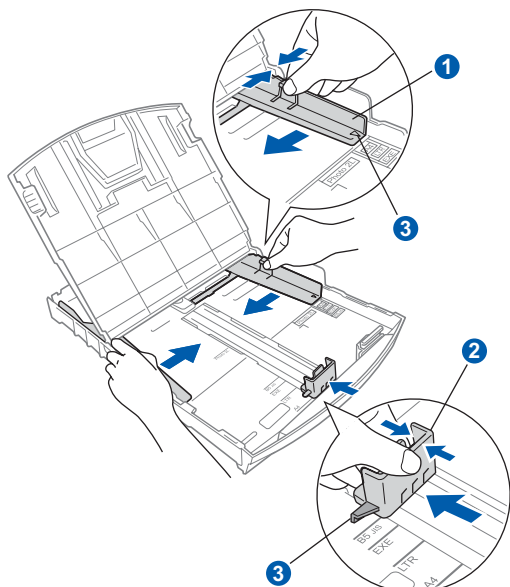


- b** Open the paper tray cover **1**.



- c** With both hands, gently press and slide the paper side guides **1** and then the paper length guide **2** to fit the paper size.

Make sure that the triangular marks **3** on the paper side guides **1** and paper length guide **2** line up with the mark for the paper size you are using.

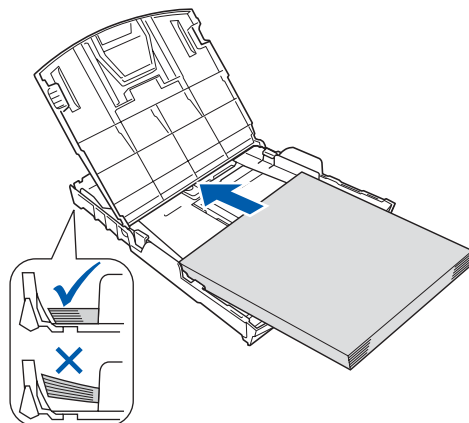


- d** Fan the stack of paper well to avoid paper jams and misfeeds.

- e** Gently put the paper into the paper tray print side down and top edge first. Check that the paper is flat in the tray.

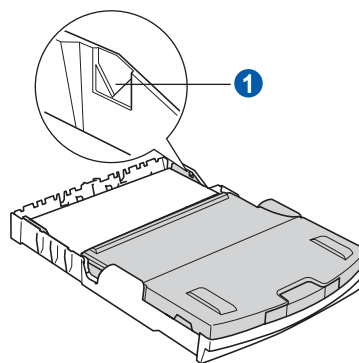
Important

Do not push the paper in too far.

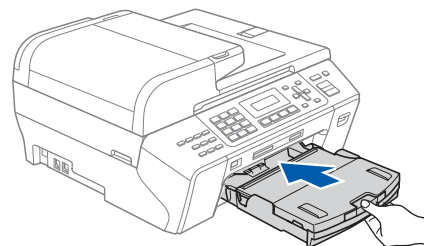


- f** Gently adjust the paper side guides to the paper with both hands. Make sure that the paper side guides touch the edges of the paper.

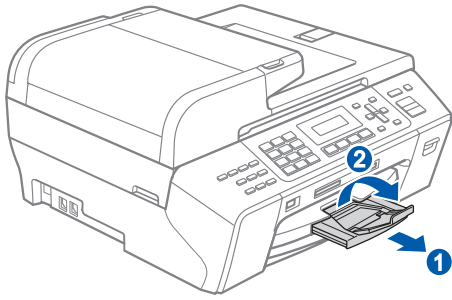
- g** Close the paper tray cover. Check that the paper is flat in the tray and below the maximum paper mark **1**.



- h** Slowly push the paper tray completely into the machine.



- i** While holding the paper tray in place, pull out the paper support **1** until it clicks, and then unfold the paper support flap **2**.

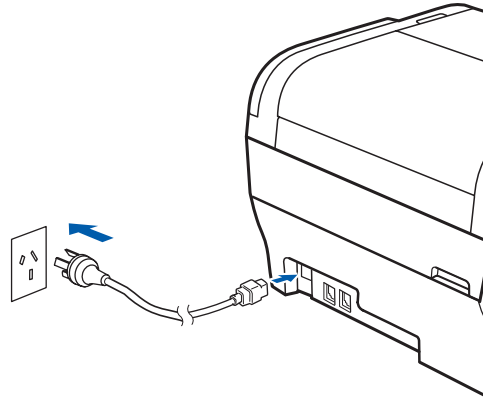


3 Connect the power cord and telephone line

Important

DO NOT connect the USB cable before installing driver.

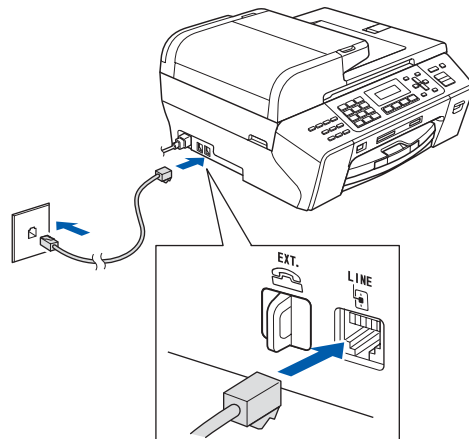
- a** Connect the power cord.



! WARNING

The machine must be fitted with an earthed plug.

- b** Connect the telephone line cord. Connect one end of the telephone line cord to the socket on the machine marked **LINE** and the other end to a telephone wall socket.



! WARNING

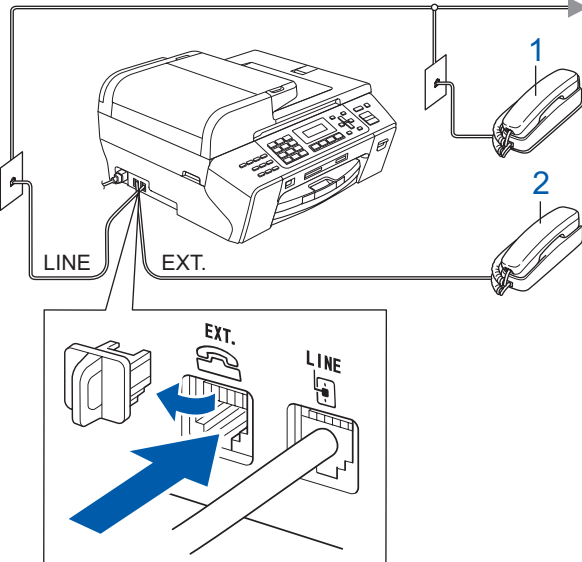
Since the machine is grounded through the power outlet, you can protect yourself from potentially hazardous electrical conditions on the telephone network by keeping the power cord connected to your machine when you connect it to a telephone line. Similarly, you can protect yourself when you want to move your machine by disconnecting the telephone line first and then the power cord.

Important

The telephone line cord **MUST** be connected to the socket on the machine marked **LINE**.

Note

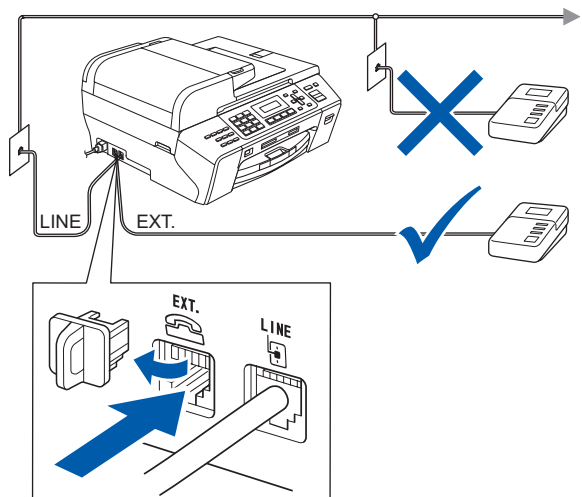
If you are sharing one telephone line with an external telephone, connect it as shown below.



- 1 Extension telephone
- 2 External telephone

Note

If you are sharing one telephone line with an external telephone answering machine, connect it as shown below.



Set the receive mode to *External TAD* if you have an external answering machine. See *Choose a Receive Mode* on page 7. For additional details, see *Connecting an external TAD (telephone answering device)* in Chapter 7 of the User's Guide.

4

Install the ink cartridges

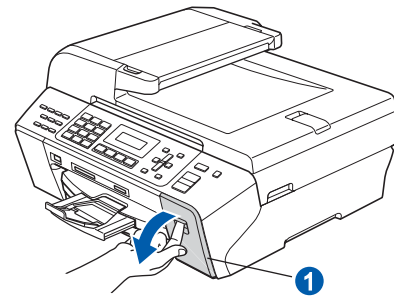
WARNING

If ink gets in your eyes, wash them out with water at once, and if irritation occurs consult a doctor.

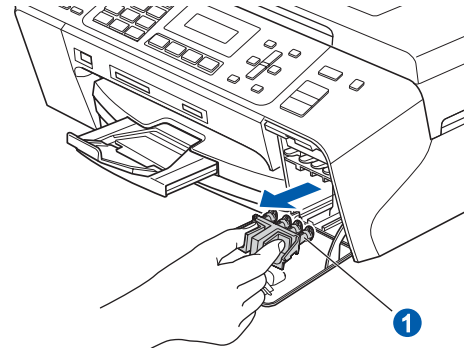
- a Make sure that the power is turned on. The LCD shows:

No Cartridge

- b Open the ink cartridge cover ①.



- c Remove the green protective part ①.

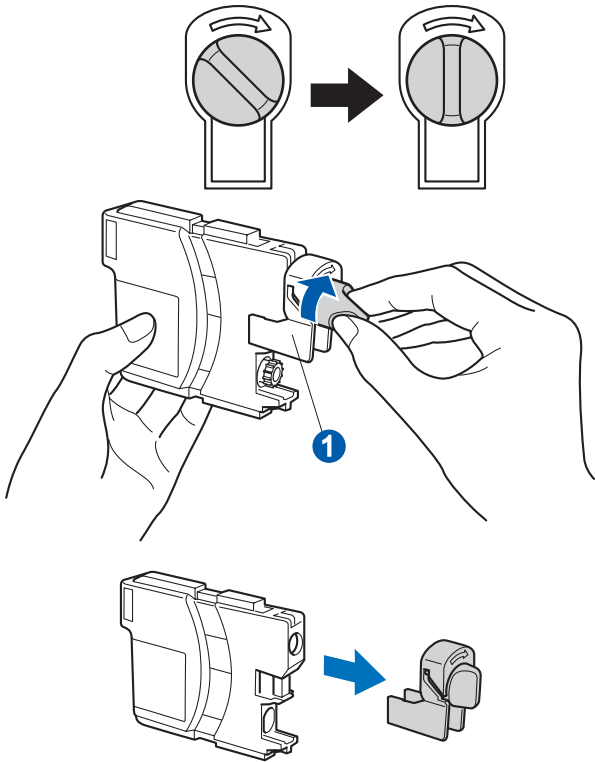


Note

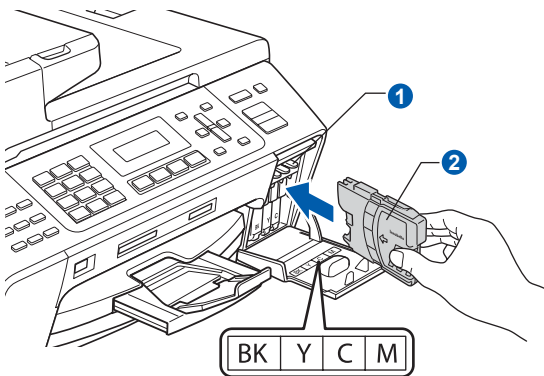
Do not throw away the green protective part. You will need it if you transport the machine.

- d Unpack the ink cartridge.

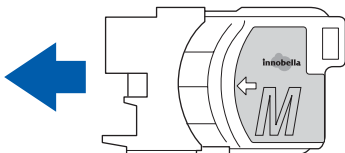
- e** Turn the green knob on the protective yellow cap clockwise until it clicks to release the vacuum seal, then remove the cap ①.



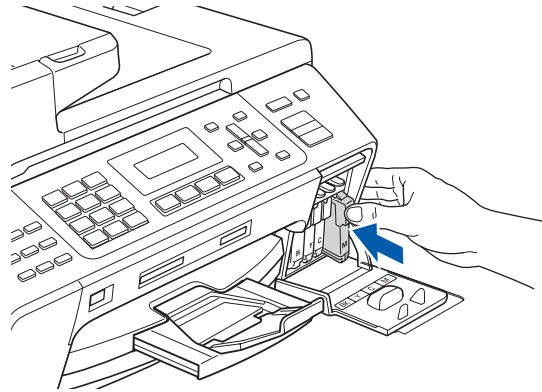
- f** Take care to match the color of the lever ① with the cartridge color ②, as shown in the diagram below.



- g** Install each ink cartridge in the direction of the arrow on the label.



- h** Gently push the ink cartridge until it clicks. After all the ink cartridges are installed close the ink cartridge cover.



Important

After initial installation of the ink cartridges, the machine will start cleaning the ink tube system. This cleaning process will last approximately four minutes.

DO NOT unplug the machine from the power outlet or attempt to stop the cleaning process. Interruption of cleaning process may cause undesired print quality problems.

Important

- **DO NOT** take out ink cartridges if you do not need to replace them. If you do so, it may reduce the ink quantity and the machine will not know the quantity of ink left in the cartridge.
- **DO NOT** shake the ink cartridges. If ink stains your skin or clothing, wash with soap or detergent at once.
- **DO NOT** repeatedly insert and remove the cartridges. If you do so, ink may seep out of the cartridge.
- If you mix the colors by installing an ink cartridge in the wrong position, clean the print head several times after correcting the cartridge installation. (See *Cleaning the print head in Appendixes B of the User's Guide.*)
- Once you open an ink cartridge, install it in the machine and use it up within six months of installation. Use unopened ink cartridges by the expiration date written on the cartridge package.
- **DO NOT** dismantle or tamper with the ink cartridge, this can cause the ink to leak out of the cartridge.
- Brother multifunction machines are designed to work with ink of a particular specification and will work to a level of optimum performance when used with genuine Brother branded ink cartridges. Brother cannot guarantee this optimum performance if ink or ink cartridges of other specifications are used. Brother does not therefore recommend the use of cartridges other than genuine Brother branded cartridges with this machine or the refilling of empty cartridges with ink from other sources. If damage is caused to the print head or other parts of this machine as a result of using incompatible products with this machine, any repairs required as a result may not be covered by the warranty.

5 Check the print quality

- a** When the preparation process has finished, the LCD shows this message

Set Paper and

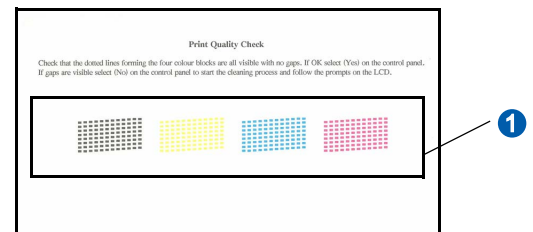
↓

Press Start

Press **Color Start**.

The machine starts printing the Print Quality Check Sheet.

- b** Check the quality of the four color blocks ① on the sheet. (black/yellow/cyan/magenta)



- c** The LCD shows:

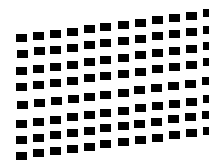
Is Quality OK?

↓

1.Yes 2.No

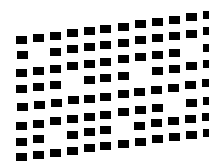
If all lines are clear and visible, press **1 (Yes)** on the dial pad to finish the quality check.

OK



If you can see missing short lines, press **2 (No)** on the dial pad and go to **d**.

Poor



- d** The LCD asks you if the print quality is OK for black and color. Press **1** (Yes) or **2** (No) on the dial pad.

Black OK?



1.Yes 2.No

Color OK?



1.Yes 2.No

After pressing **1** (Yes) or **2** (No) for both black and color, the LCD shows:

Start Cleaning?



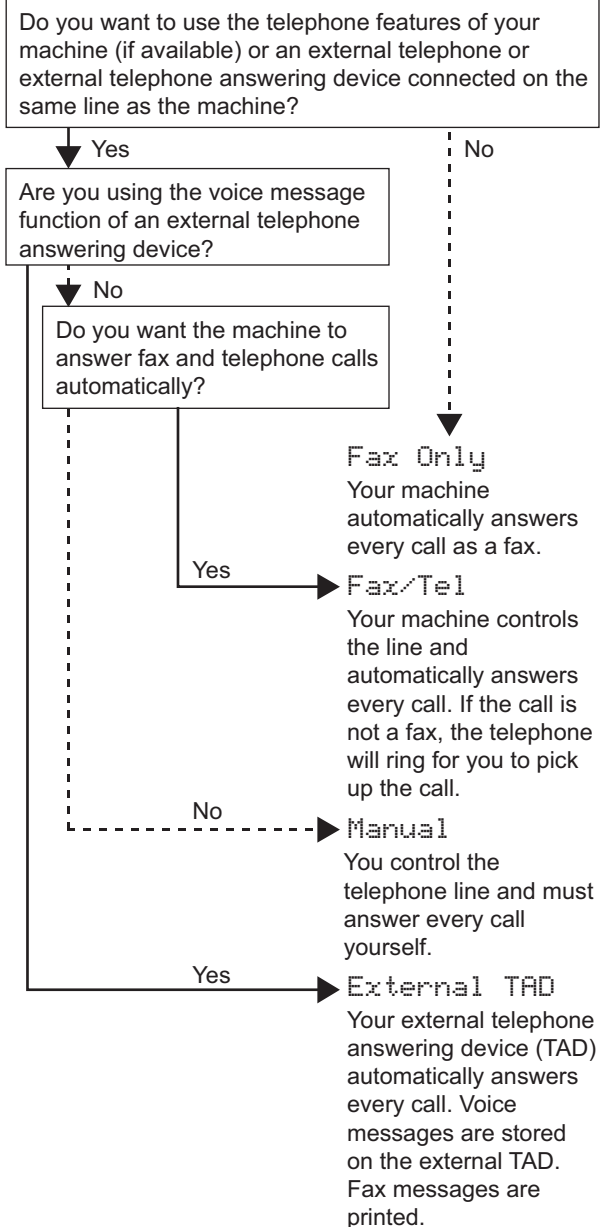
1.Yes 2.No

- e** Press **1** (Yes), the machine will then start cleaning the colors.


- f** After cleaning is finished, press **Color Start**. The machine starts printing the Print Quality Check Sheet again. Go back to **b**.

6 Choose a Receive Mode

There are four possible receive modes: Fax Only, Fax/Tel, Manual and External TAD.



- a** Press **Menu**.
- b** Press **0**.
- c** Press **1**.
- d** Press **▲** or **▼** to choose the receive mode. Press **OK**.
- e** Press **Stop/Exit**.

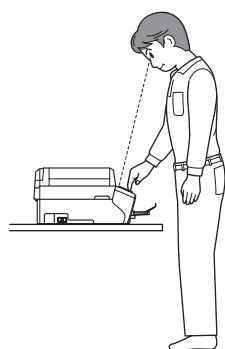
 For details, see *Using receive modes in Chapter 6 of the User's Guide*.

7 Set the LCD contrast (If needed)

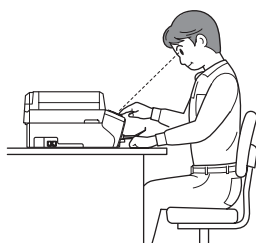
If you are having difficulty reading the LCD from your position, try changing the contrast setting.

- a** Press **Menu**.
- b** Press **1**.
- c** Press **6**.
- d** Press **▲** or **▼** to choose **Dark** or **Light**.

Contrast:Dark



Contrast:Light



- e** Press **OK**.
- f** Press **Stop/Exit**.

8 Set the date and time

The machine displays the date and time, and if you set up the station ID, the date and time displayed on your machine will be printed on every fax you send.

- a** Press **Menu**.
- b** Press **0**.
- c** Press **2**.
- d** Enter the last two digits of the year on the dial pad, and then press **OK**.

Year:2008

(e.g. Enter **08** for 2008.)

- e** Repeat for **Month** and **Day**, and **Hours** and **Minutes** in 24-hour format.
- f** Press **Stop/Exit**.

9

Enter personal information (station ID)

You should store your name and fax number to be printed on all fax pages that you send.

- a** Press **Menu**.
- b** Press **0**.
- c** Press **3**.
- d** Enter your fax number (up to 20 digits) on the dial pad, and then press **OK**. To enter a “+” for international codes, press *****. For example, to enter the China dialling code “+86”, press *****, **8**, **6** and then the rest of your number.
- e** Enter your name (up to 20 characters) using the dial pad, and then press **OK**.



Note

- See the following chart for entering your name.
- If you need to enter a character that is on the same key as the last character, press **▶** to move the cursor to the right.
- If you entered a letter incorrectly and want to change it, press **◀** or **▶** to move the cursor to the incorrect character, press **Clear/Back**.

Press key	One time	Two times	Three times	Four times
2	A	B	C	2
3	D	E	F	3
4	G	H	I	4
5	J	K	L	5
6	M	N	O	6
7	P	Q	R	S
8	T	U	V	8
9	W	X	Y	Z

- f** Press **Stop/Exit**.



Note

If you make a mistake and want to start again, press **Stop/Exit** and go back to **a**.



For details, see *Entering Text in Appendix C of the User's Guide*.

10

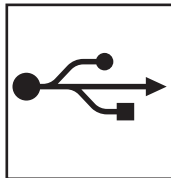
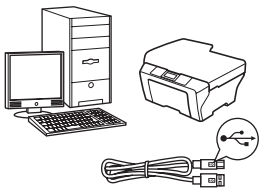
Set tone or pulse dialling mode

Your machine comes set for Tone dialling service. If you have Pulse dialling service (rotary), you need to change the dialling mode.

- a** Press **Menu**.
- b** Press **0**.
- c** Press **4**.
- d** Press **▲** or **▼** to choose **Pulse (or Tone)**. Press **OK**.
- e** Press **Stop/Exit**.

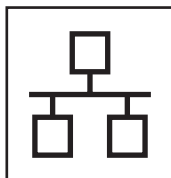
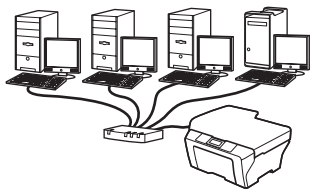
11

Choose your connection type



For USB interface cable

Windows[®], go to page 12
Macintosh[®], go to page 16



For Wired Network

Windows[®], go to page 19
Macintosh[®], go to page 25

Windows[®]
USB
Macintosh[®]

Windows[®]
Wired Network
Macintosh[®]



For USB Interface Users (For Windows® 2000 Professional/XP/XP Professional x64 Edition/ Windows Vista®)

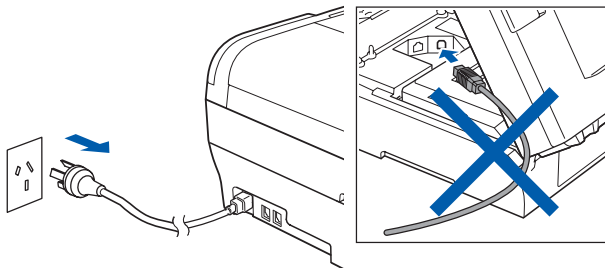
12 Before you install

a Make sure that your computer is ON and you are logged on with Administrator rights.

Important

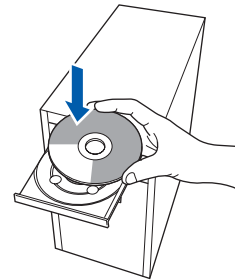
- **DO NOT connect the USB cable yet.**
- **If there are any programs running, close them.**
- **Make sure there are no memory cards or a USB Flash memory drive inserted.**
- **The screens may differ depending on the operating system.**

b If you already connected USB cable and power source, disconnect USB cable first, then disconnect the machine from the power socket.



13 Install MFL-Pro Suite

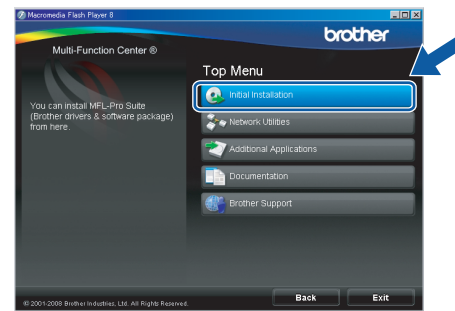
a Put the supplied CD-ROM into your CD-ROM drive. If the model name screen appears, choose your machine. If the language screen appears, choose your language.



Note

*If the Brother screen does not appear automatically, go to **My Computer (Computer)**, double-click the CD-ROM icon, and then double-click **start.exe**.*

b The CD-ROM main menu will appear. Click **Initial Installation**.



c Click **Install MFL-Pro Suite**.





Note

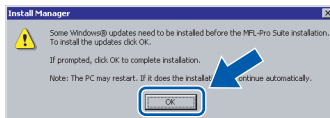
- **If you are using Windows® 2000 Professional and have not installed service pack 3 (SP3) or greater:**

To access the PhotoCapture Center™ features from your computer you may have to install a Windows® 2000 update first.

The Windows® 2000 update is included with the MFL-Pro Suite installer.

To install the update, follow the steps below:

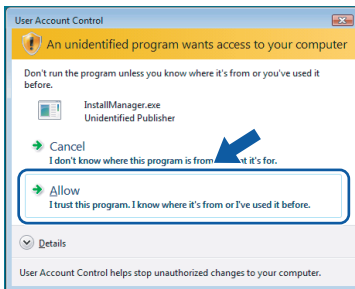
- 1 Click **OK** to start installation of the Windows® updates.



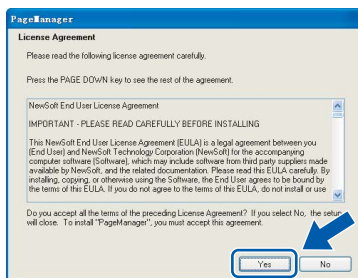
- 2 When instructed, click **OK** to restart your computer.
- 3 After the computer restarts, the installation of MFL-Pro Suite will automatically continue.

- If the installation does not continue automatically, open the main menu again by ejecting and then reinserting the CD-ROM or double-click the **start.exe** program from the root folder, and continue from **b** to install MFL-Pro Suite.

- For Windows Vista®, when the **User Account Control** screen appears, click **Allow**.



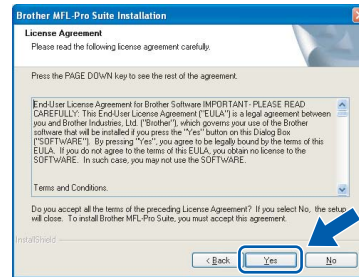
- d** When the Presto!® PageManager® **License Agreement** window appears, click **Yes** if you agree to the Software **License Agreement**.



- e** The installation of Presto!® PageManager® will automatically start and is followed by the installation of MFL-Pro Suite.

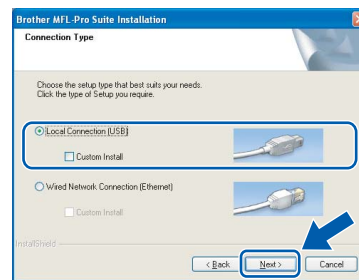
f

When the Brother MFL-Pro Suite Software **License Agreement** window appears, click **Yes** if you agree to the Software **License Agreement**.



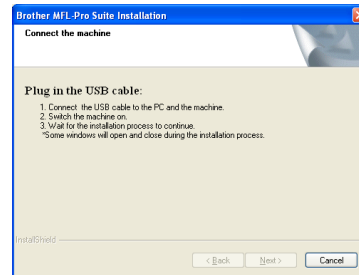
g

Choose **Local Connection**, and then click **Next**. The installation continues.



h

When this screen appears, go to the next step.



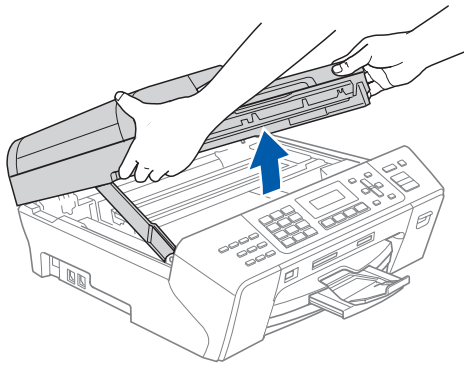


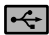
14 Connect the USB cable

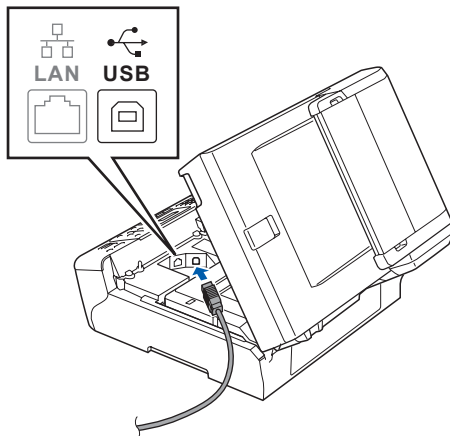
Important

- **DO NOT** connect the machine to a non-powered USB hub.
- **Connect the machine directly to your computer.**

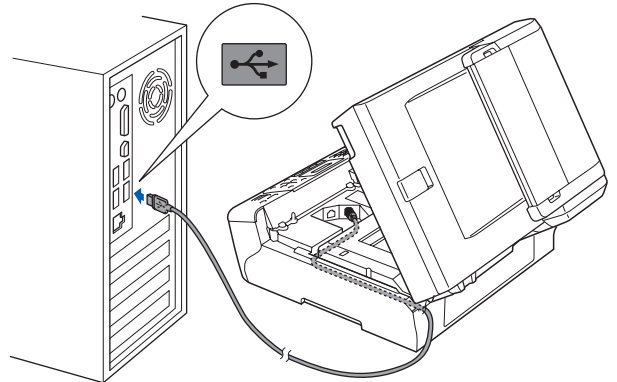
a Lift the scanner cover until it locks securely into the open position.



b Connect the USB cable to the USB socket marked with a  symbol. You will find the USB socket inside the machine on the right as shown below.



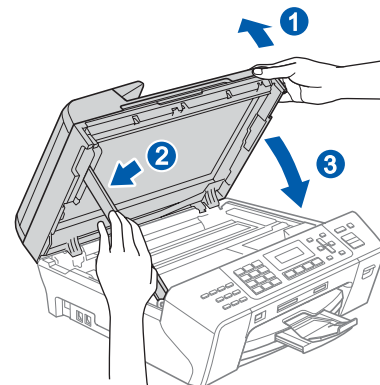
c Carefully guide the USB cable through the trench as shown below, following the trench around and toward the back of the machine. Then connect the cable to your computer.



Important

Make sure that the cable does not restrict the cover from closing, or an error may occur.

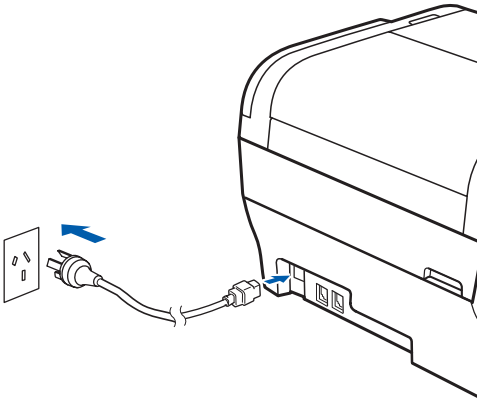
d Lift the scanner cover to release the lock **1**. Gently push the scanner cover support down **2** and close the scanner cover **3** using both hands.





15 Connect the power cord

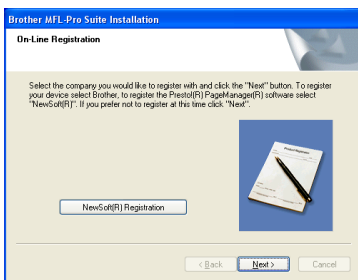
- a Connect the power cord. The installation will continue automatically. The installation screens appear one after another.



Important
DO NOT cancel any of the screens during the installation. It may take a few seconds for all screens to appear.

Note
For Windows Vista®, when this screen appears, click the check box and click **Install** to complete the installation correctly.

- b When the **On-Line Registration** screen is displayed, make your selection and follow the on-screen instructions.



16 Finish and restart

- a Click **Finish** to restart your computer. After restarting the computer, you must be logged on with Administrator rights.



Note
If an error message appears during the software installation, run the **Installation Diagnostics** located in **Start/All Programs/Brother/MFC-XXXX** (where MFC-XXXX is your model name).

Finish The installation is now complete.

Now go to
Proceed to **Install Optional Applications** on page 28.



For USB Interface Users (For Mac OS® X 10.2.4 or greater)

12 Before you install

a Make sure your machine is connected to the power and your Macintosh® is ON. You must be logged on with Administrator rights.

Important

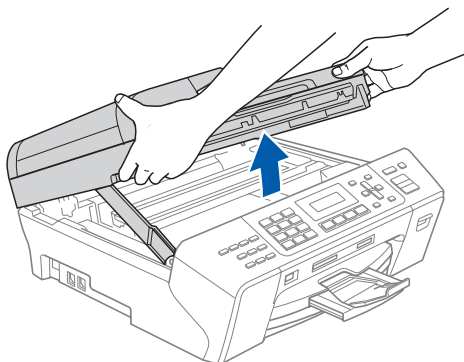
- For Mac OS® X 10.2.0 to 10.2.3 users, upgrade to Mac OS® X 10.2.4 or greater. (For the latest information for Mac OS® X, visit <http://solutions.brother.com/>)
- Make sure there are no memory cards or a USB Flash memory drive inserted.


13 Connect the USB cable

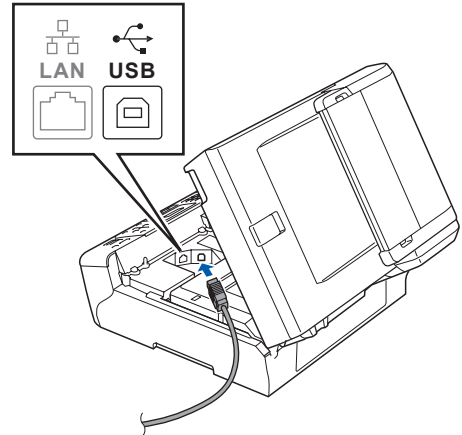
Important

- **DO NOT** connect the machine to a non-powered USB hub.
- Connect the machine directly to your Macintosh®.

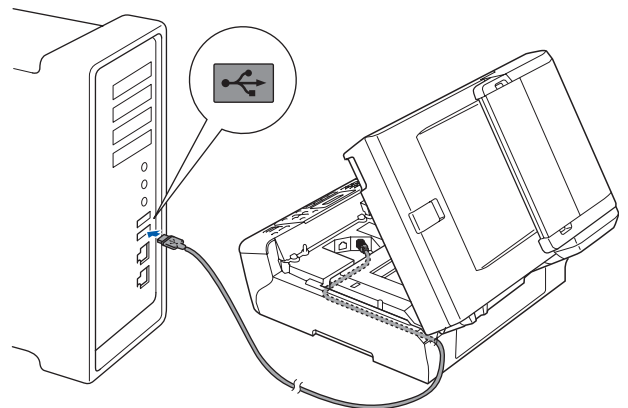
a Lift the scanner cover until it locks securely into the open position.



b Connect the USB cable to the USB socket marked with a  symbol. You will find the USB socket inside the machine on the right as shown below.



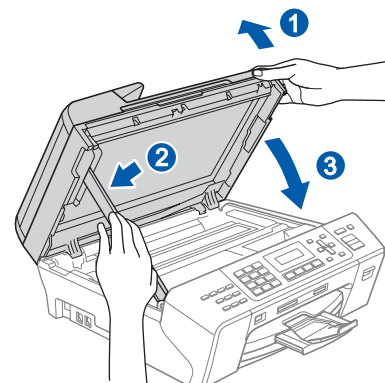
c Carefully guide the USB cable through the trench as shown below, following the trench around and toward the back of the machine. Then connect the cable to your Macintosh®.



Important

Make sure that the cable does not restrict the cover from closing, or an error may occur.

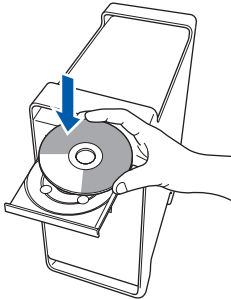
d Lift the scanner cover to release the lock **1**. Gently push the scanner cover support down **2** and close the scanner cover **3** using both hands.



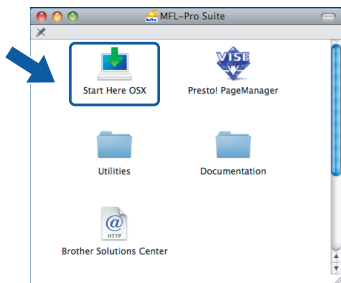


14 Install MFL-Pro Suite

a Put the supplied CD-ROM into your CD-ROM drive.



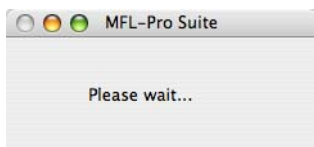
b Double-click the **Start Here OSX** icon to install.



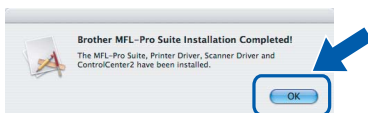
Note

Please wait, it will take a few seconds for the software to install. After the installation, click **Restart** to finish installing the software.

c The Brother software will search for the Brother device. During this time the following screen will appear.

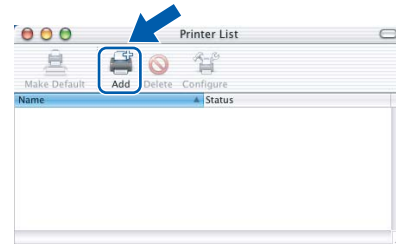


d When this screen appears, click **OK**.

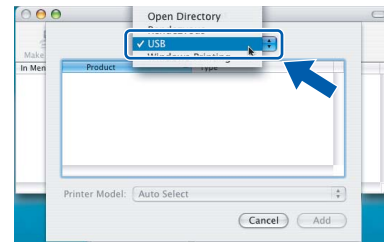


OK! For Mac OS® X 10.3.x or greater, the installation of MFL-Pro Suite is now complete. Go to step **15** on page 18.

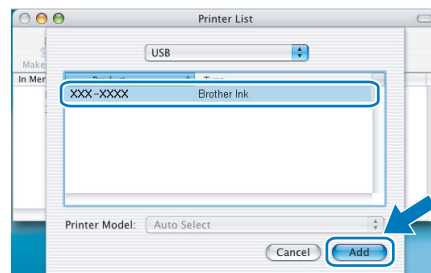
e For Mac OS® X 10.2.4 to 10.2.8 users, click **Add**.



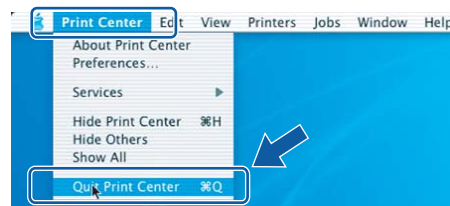
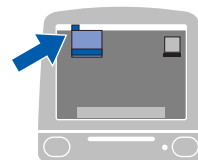
f Choose **USB**.



g Choose **XXX-XXXX** (where XXX-XXXX is your model name), and then click **Add**.



h Click **Print Center**, then **Quit Print Center**.



OK! The installation of MFL-Pro Suite is now complete. Go to step **15** on page 18.

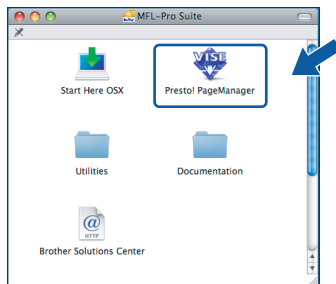
Windows®
USB
Macintosh®



15 Install Presto!® PageManager®

When Presto!® PageManager® is installed OCR capability is added to Brother ControlCenter2. You can easily scan, share and organize photos and documents using Presto!® PageManager®.

- a** Double-click the **Presto! PageManager** icon and follow the on-screen instructions.

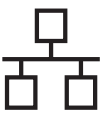


For Mac OS® X 10.2.4 to 10.3.8 users, when this screen appears, click **Go** to download the software from the Brother Solutions Center website.



Finish

The installation is now complete.



For Wired Network Interface Users (For Windows® 2000 Professional/XP/XP Professional x64 Edition/ Windows Vista®)

12 Before you install

- a** Make sure that your computer is ON and you are logged on with Administrator rights.

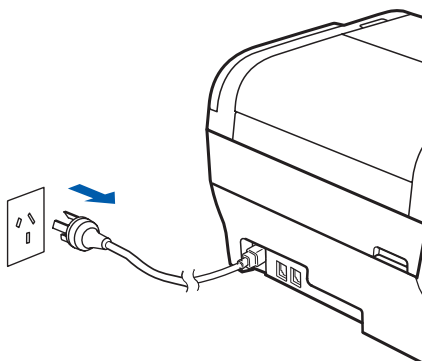
Important

- If there are any programs running, close them.
- Make sure there are no memory cards or a USB Flash memory drive inserted.
- The screens may differ depending on the operating system.

Important

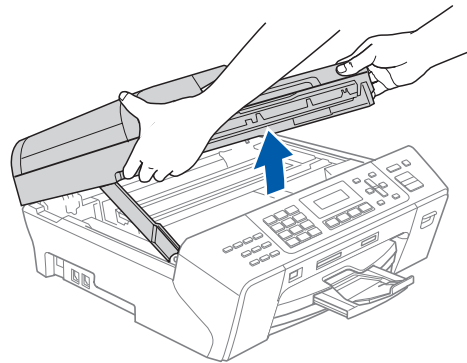
Before installation, if you are using personal firewall software (other than Windows® Firewall), anti-spyware or antivirus applications, temporarily disable them.


- b** Disconnect the machine from the power socket.

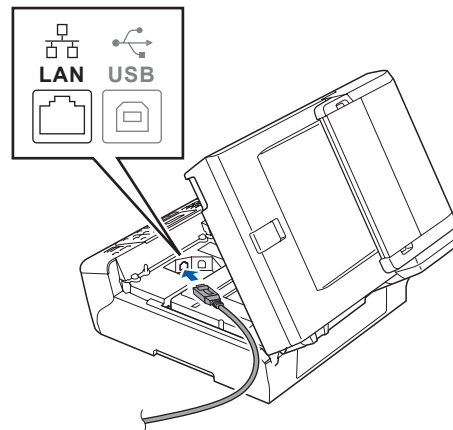


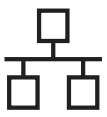
13 Connect the network cable

- a** Lift the scanner cover until it locks securely into the open position.

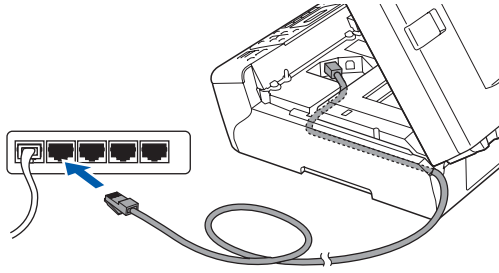


- b** Connect the network cable to the LAN socket marked with a  symbol. You will find the LAN socket inside the machine on the left as shown below.





- c** Carefully guide the network cable to the trench as shown below, following the trench around and toward the back of the machine. Then, connect the cable to your network.



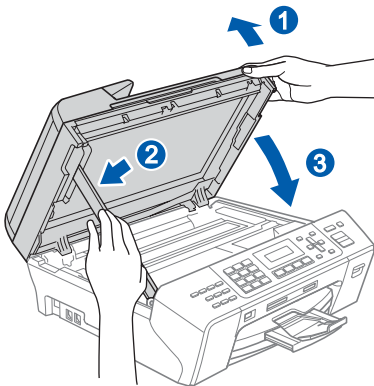
 **Note**

If both USB and LAN cables are being used, guide both cables through the trench with one on top of the other.

Important

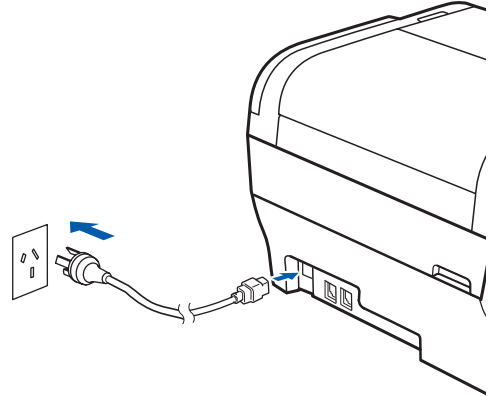
Make sure that the cable does not restrict the cover from closing, or an error may occur.

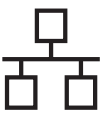
- d** Lift the scanner cover to release the lock ①. Gently push the scanner cover support down ② and close the scanner cover ③ using both hands.



14 Connect the power cord

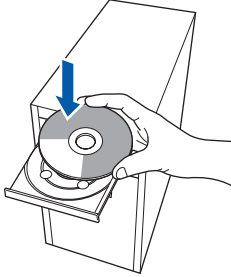
- a** Connect the power cord.





15 Install MFL-Pro Suite

- a** Put the supplied CD-ROM into your CD-ROM drive. If the model name screen appears, choose your machine. If the language screen appears, choose your language.



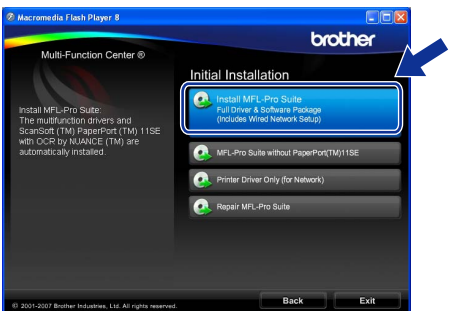
Note

If the Brother screen does not appear automatically, go to **My Computer (Computer)**, double-click the CD-ROM icon, and then double-click **start.exe**.

- b** The CD-ROM main menu will appear. Click **Initial Installation**.



- c** Click **Install MFL-Pro Suite**.



Note

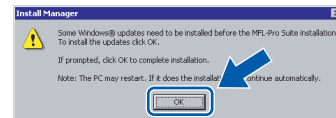
- If you are using Windows® 2000 Professional and have not installed service pack 3 (SP3) or greater:**

To access the PhotoCapture Center™ features from your computer you may have to install a Windows® 2000 update first.

The Windows® 2000 update is included with the MFL-Pro Suite installer.

To install the update, follow the steps below:

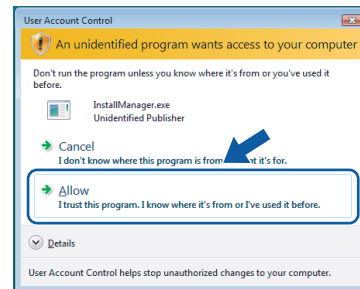
- 1 Click **OK** to start installation of the Windows® updates.

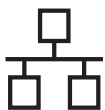


- 2 When instructed, click **OK** to restart your computer.
- 3 After the computer restarts, the installation of MFL-Pro Suite will automatically continue.

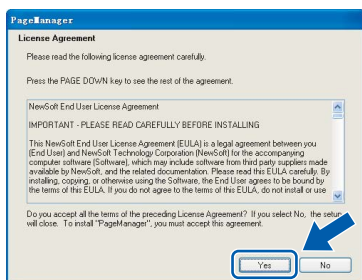
- If the installation does not continue automatically, open the main menu again by ejecting and then reinserting the CD-ROM or double-click the **start.exe** program from the root folder, and continue from **b** to install MFL-Pro Suite.**

- For Windows Vista®, when the **User Account Control** screen appears, click **Allow**.**



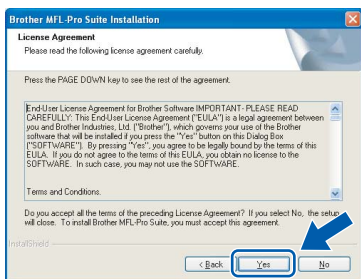


- d** When the Presto!® PageManager® **License Agreement** window appears, click **Yes** if you agree to the Software **License Agreement**.

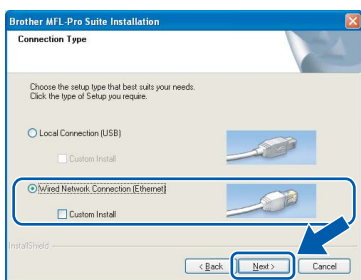


- e** The installation of Presto!® PageManager® will automatically start and is followed by the installation of MFL-Pro Suite.

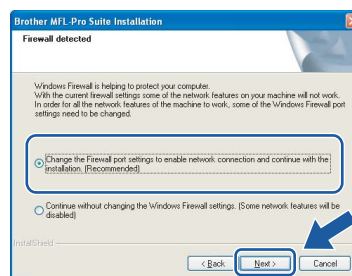
- f** When the Brother MFL-Pro Suite Software **License Agreement** window appears, click **Yes** if you agree to the Software **License Agreement**.



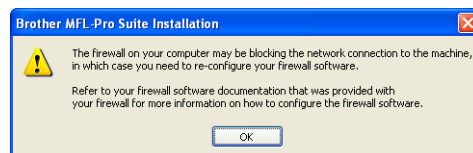
- g** Choose **Wired Network Connection**, and then click **Next**.



- h** For Windows® XP SP2/Windows Vista® users, when this screen appears, choose **Change the Firewall port settings to enable network connection and continue with the installation. (Recommended)** and click **Next**.

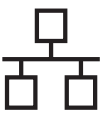


If you are using a firewall other than Windows® Firewall or Windows® Firewall is off, this screen may appear.



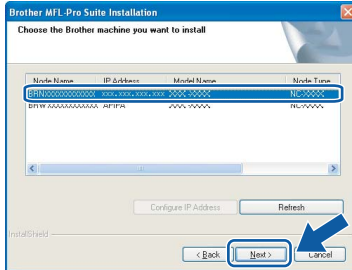
See the instructions provided with your firewall software for information on how to add the following network ports.

- For network scanning, add UDP port 54925.
- For network PC-Fax receiving, add UDP port 54926.
- If you still have trouble with your network connection, add UDP port 137.



Note

- If the machine is configured for your network, choose the machine from the list, and then click **Next**.
This window will not appear if there is only one machine connected to the network, it will be chosen automatically.



If your machine shows **APIPA** in the **IP Address** field, click **Configure IP Address** and enter an IP address for your machine that is suitable for your network.

- If the machine is not yet configured for use on your network, the following screen appears.



Click **OK**.
The **Configure IP Address** window will appear. Enter an IP address for your machine that is suitable for your network by following the on-screen instructions.

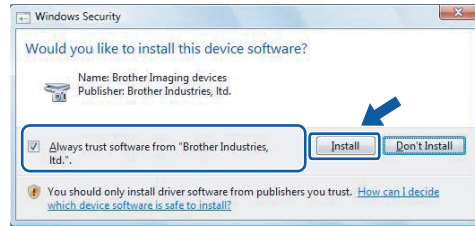
- The installation of the Brother drivers will automatically start. The installation screens appear one after another.

Important

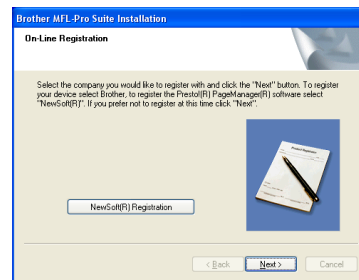
DO NOT cancel any of the screens during the installation. It may take a few seconds for all screens to appear.

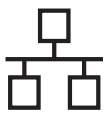
Note

For Windows Vista®, when this screen appears, click the check box and click **Install** to complete the installation correctly.



- When the **On-Line Registration** screen is displayed, make your selection and follow the on-screen instructions.





16

Finish and restart

- a** Click **Finish** to restart your computer. After restarting the computer, you must be logged on with Administrator rights.



Note

If an error message appears during the software installation, run the **Installation Diagnostics** located in **Start/All Programs/Brother/MFC-XXXX** (where MFC-XXXX is your model name).

17

Install MFL-Pro Suite on additional computers (If needed)

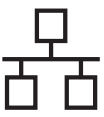
If you want to use your machine with multiple computers on the network, install MFL-Pro Suite on each computer. Go to step **15** on page 21. Also see step **12-a** on page 19 before you install.

Finish

The installation is now complete.

Now go to

Proceed to **Install Optional Applications** on page 28.



For Wired Network Interface Users (For Mac OS® X 10.2.4 or greater)

12 Before you install

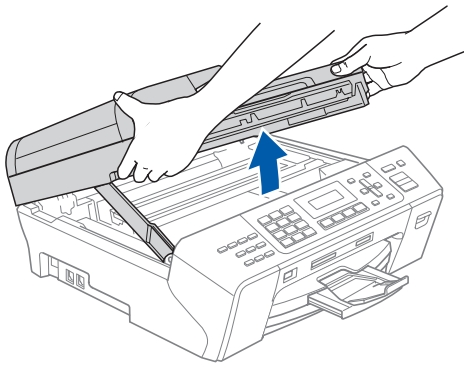
- a Make sure your machine is connected to the power and your Macintosh® is ON. You must be logged on with Administrator rights.


Important

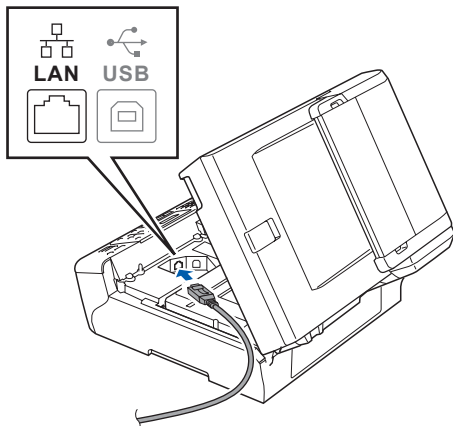
- For Mac OS® X 10.2.0 to 10.2.3 users, upgrade to Mac OS® X 10.2.4 or greater. (For the latest information for Mac OS® X, visit <http://solutions.brother.com/>)
- Make sure there are no memory cards or a USB Flash memory drive inserted.

13 Connect the network cable

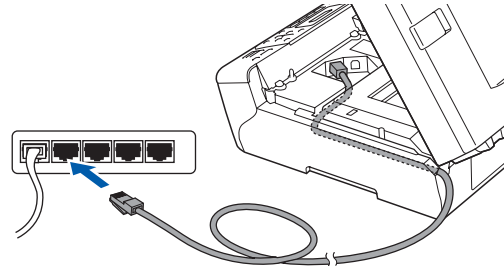
- a Lift the scanner cover until it locks securely into the open position.



- b Connect the network cable to the LAN socket marked with a  symbol. You will find the LAN socket inside the machine on the left as shown below.



- c Carefully guide the network cable to the trench as shown below, following the trench around and toward the back of the machine. Then, connect the cable to your network.



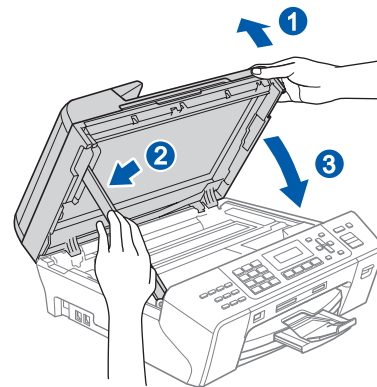
Important

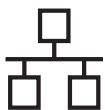
Make sure that the cable does not restrict the cover from closing, or an error may occur.

Note

If both USB and LAN cables are being used, guide both cables through the trench with one on top of the other.

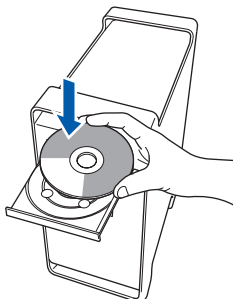
- d Lift the scanner cover to release the lock ①. Gently push the scanner cover support down ② and close the scanner cover ③ using both hands.



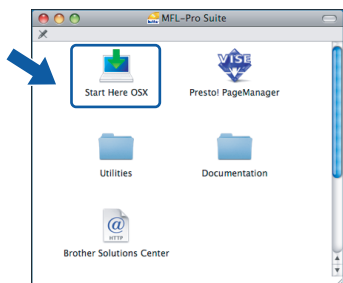


14 Install MFL-Pro Suite

- a** Put the supplied CD-ROM into your CD-ROM drive.



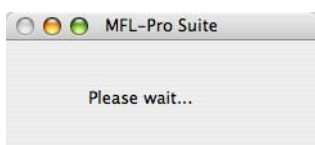
- b** Double-click the **Start Here OSX** icon to install.



Note

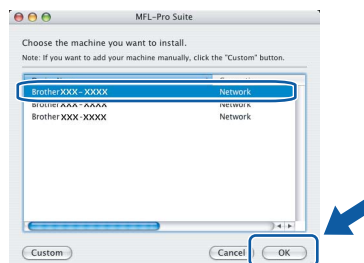
Please wait, it will take a few seconds for the software to install. After the installation, click **Restart** to finish installing the software.

- c** The Brother software will search for the Brother device. During this time the following screen will appear.

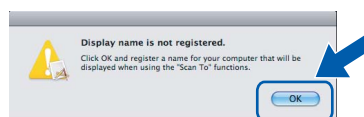


Note

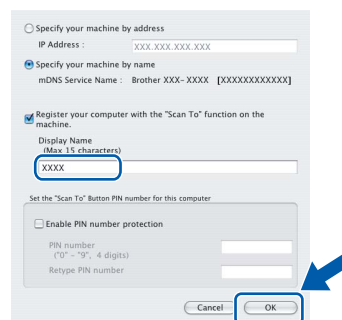
- If the machine is configured for your network, choose the machine from the list, and then click **OK**. This window will not appear if there is only one machine connected on the network, it will be chosen automatically. Go to **d**.



- If this screen appears click **OK**.

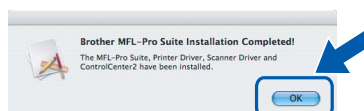


Enter a name for your Macintosh® in **Display Name** up to 15 characters long and click **OK**. Go to **d**.

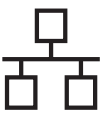


- If you want to use the machine's **Scan** key to scan over the network you must check the **Register your computer with the "Scan To" function on the machine** box.
- The name you enter will appear on the machine's LCD when you press the **Scan** key and choose a scan option. (For more information, see *Network Scanning in the Software User's Guide on the CD-ROM*.)

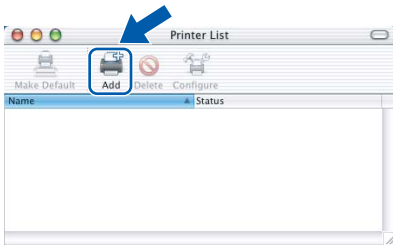
- d** When this screen appears, click **OK**.



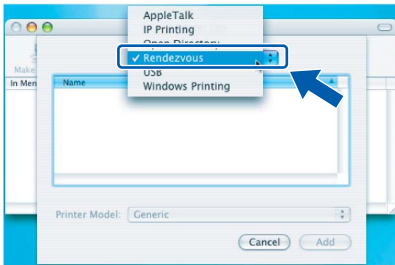
- OK!** For Mac OS® X 10.3.x or greater, the installation of MFL-Pro Suite is now complete. Go to step **15** on page 27.



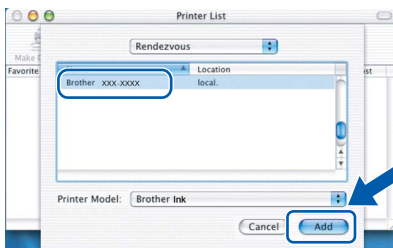
- e** For Mac OS® X 10.2.4 to 10.2.8 users, click **Add**.



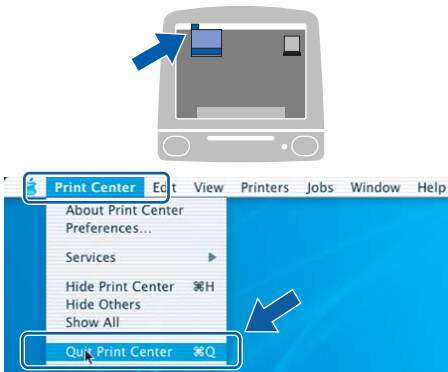
- f** Make the selection shown below.



- g** Choose **XXX-XXXX** (where XXX-XXXX is your model name), and then click **Add**.



- h** Click **Print Center**, then **Quit Print Center**.

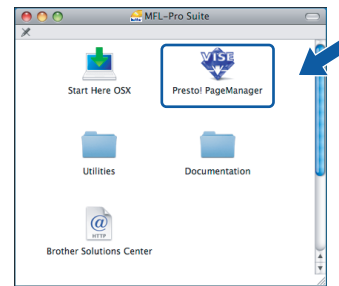


- OK!** The installation of MFL-Pro Suite is now complete. Go to step **15** on page 27.

15 Install Presto!® PageManager®

When Presto!® PageManager® is installed OCR capability is added to Brother ControlCenter2. You can easily scan, share and organize photos and documents using Presto!® PageManager®.

- a** Double-click the **Presto! PageManager** icon and follow the on-screen instructions.



For Mac OS® X 10.2.4 to 10.3.8 users, when this screen appears, click **Go** to download the software from the Brother Solutions Center website.



16 Install MFL-Pro Suite on additional computers (If needed)

If you want to use your machine with multiple computers on the network, install MFL-Pro Suite on each computer. Go to step **14** on page 26. Also see step **12-a** on page 25 before you install.

Finish The installation is now complete.

1 Install FaceFilter Studio supported by Reallusion, Inc

FaceFilter Studio is an easy-to-use borderless photo printing application. FaceFilter Studio also lets you edit your photo data and add photo effects such as red eye reduction or skin tone enhancement.

Important

- The machine must be ON and connected to the computer.
- The computer must be connected to the Internet.
- Make sure you are logged on with Administrator rights.

- Open the main menu again by ejecting and then reinserting the CD-ROM or by double-clicking the **start.exe** program from the root folder.
- The CD-ROM main menu will appear. Choose your language and then click **Additional Applications**.



- Click the **FaceFilter Studio** button to install.



- For information on basic FaceFilter Studio functions, see *Using FaceFilter Studio for photo printing by REALLUSION in the Software User's Guide on the CD-ROM*. For more detailed information, see FaceFilter Studio Help.

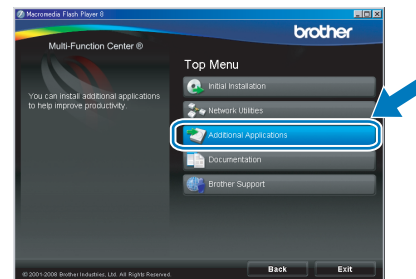
2 Install BookScan&Whiteboard Suite supported by Reallusion, Inc

You can install **BookScan&Whiteboard Suite**. The **BookScan Enhancer** software can correct your scanned book images automatically. The **Whiteboard Enhancer** software cleans up and enhances text and images from photos taken of your whiteboard. (Internet access required.)

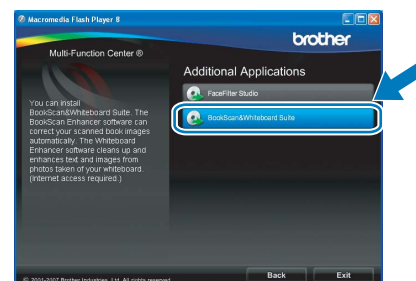
Important

- The machine must be ON and connected to the computer.
- The computer must be connected to the Internet.

- Open the main menu again by ejecting and then reinserting the CD-ROM or by double-clicking the **start.exe** program from the root folder.
- The CD-ROM main menu will appear. Choose your language and then click **Additional Applications**.



- Click the **BookScan&Whiteboard Suite** button to install.



BRAdmin Light utility (For Windows® users)

BRAdmin Light is a utility for initial setup of Brother network connected devices. It also can search for Brother products on your network, view the status and configure basic network settings, such as IP address. For more information on BRAdmin Light, visit us at <http://solutions.brother.com/>.

Note

If you require more advanced printer management, use the latest Brother BRAdmin Professional utility version that is available as a download from <http://solutions.brother.com/>.

Install the BRAdmin Light configuration utility

- a** Click **Network Utilities** on the menu screen.



- b** Click **BRAdmin Light** and follow the on-screen instructions.

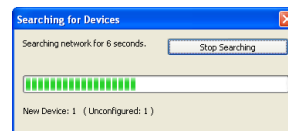


Set your IP address, Subnet Mask and Gateway using BRAdmin Light

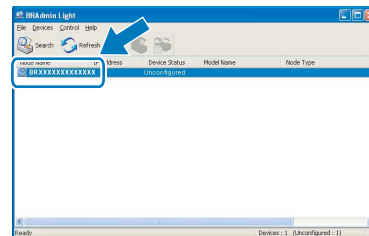
Note

If you have a DHCP/BOOTP/RARP server in your network, you don't have to do the following operation. The machine will automatically obtain its own IP address.

- a** Start BRAdmin Light. It will search for new devices automatically.



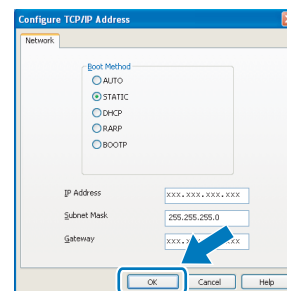
- b** Double-click the unconfigured device.



Note

The default password for the machine is 'access'. You can use BRAdmin Light to change this password.

- c** Choose **STATIC** for the **Boot Method**. Enter the **IP Address**, **Subnet Mask** and **Gateway**, and then click **OK**.



- d** The address information will be saved to the machine.

BRAdmin Light utility (For Mac OS® X users)

BRAdmin Light is a utility for initial setup of Brother network connected devices. It also can search for Brother products on your network, view the status and configure basic network settings, such as IP address from a computer running Mac OS® X 10.2.4 or greater.

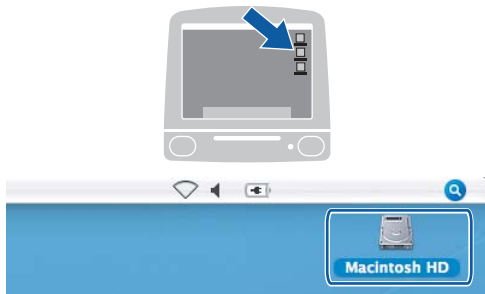
The BRAdmin Light software will be installed automatically when you install the printer driver. If you have already installed the printer driver, you don't have to install BRAdmin Light again. For more information on BRAdmin Light, visit us at <http://solutions.brother.com/>.

Set your IP address, Subnet Mask and Gateway using BRAdmin Light

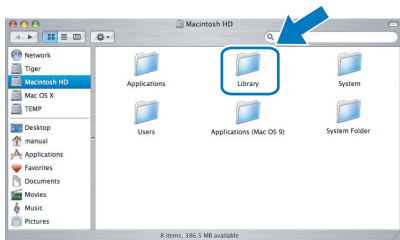
Note

- If you have a DHCP/BOOTP/RARP server in your network, you don't have to do the following operation. The machine will automatically obtain its own IP address.
- Make sure that version 1.4.1_07 or later of Java™ client software is installed on your computer.
- The default password for the machine is 'access'. You can use BRAdmin Light to change this password.

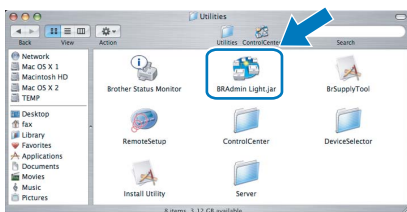
- a** Double-click the **Macintosh HD** icon on your desktop.



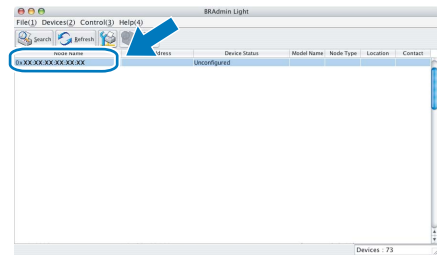
- b** Choose **Library**, **Printers**, **Brother** and then **Utilities**.



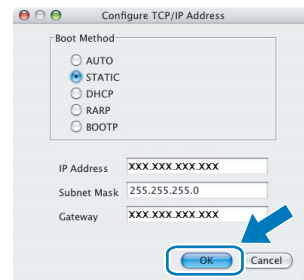
- c** Double-click the file **BRAdmin Light.jar** and run the software. BRAdmin Light will then search for new devices automatically.



- d** Double-click the unconfigured device.



- e** Choose **STATIC** for the **Boot Method**. Enter the **IP Address**, **Subnet Mask** and **Gateway**, and then click **OK**.

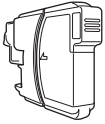
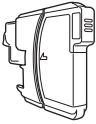
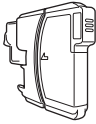
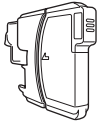


- f** The address information will be saved to the machine.

Replacement consumables

When the time comes to replace ink cartridges, an error message will be indicated on the LCD. For more information about the ink cartridges for your machine, visit <http://www.brother.com/original/> or contact your local Brother re-seller.

Ink cartridge

Black	Yellow	Cyan	Magenta
LC990BK	LC990Y	LC990C	LC990M
			

What is Innobella™?

Innobella™ is a range of genuine consumables offered by Brother. The name "Innobella™" derives from the words "Innovation" and "Bella" (meaning "Beautiful" in Italian) and is a representation of the "innovative" technology providing you with beautiful and long lasting print results.



Trademarks

The Brother logo is a registered trademark of Brother Industries, Ltd.

Brother is a registered trademark of Brother Industries, Ltd.

Multi-Function Link is a registered trademark of Brother International Corporation.

Windows Vista is either a registered trademark or a trademark of Microsoft Corporation in the United States and other countries.

Microsoft, Windows and Windows Server are registered trademarks of Microsoft Corporation in the United States and/or other countries.

Macintosh and TrueType are registered trademarks of Apple Inc.

Presto! PageManager is a registered trademark of NewSoft Technology Corporation.

PictBridge is a trademark.

FaceFilter Studio is a trademark of Reallusion, Inc.

Each company whose software title is mentioned in this manual has a Software License Agreement specific to its proprietary programs.

All other brand and product names mentioned in this manual are trademarks or registered trademarks of their respective companies.

Compilation and Publication

Under the supervision of Brother Industries, Ltd., this manual has been compiled and published, covering the latest product descriptions and specifications.

The contents of this manual and the specifications of this product are subject to change without notice.

Brother reserves the right to make changes without notice in the specifications and materials contained herein and shall not be responsible for any damages (including consequential) caused by reliance on the materials presented, including but not limited to typographical and other errors relating to the publication.

Copyright and License

©2008 Brother Industries, Ltd.

This product includes software developed by the following vendors:

©1983-1998 PACIFIC SOFTWARES, INC.