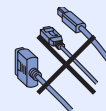


Before you can use the printer, read this Quick Setup Guide for the correct setup and installation.
To view the Quick Setup Guide in other languages, please visit <http://solutions.brother.com/>.

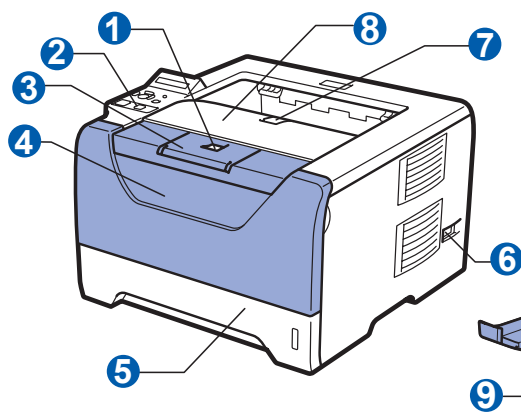
! IMPORTANT

DO NOT connect the interface cable yet.



1

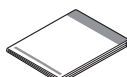
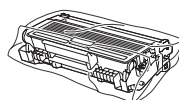
Unpack the printer and check the components



- 1 Front Cover Release Button
- 2 Control Panel
- 3 Face-down Output Tray
Support Flap 1 (Support Flap 1)
- 4 Front Cover
- 5 Paper Tray
- 6 Power Switch
- 7 Face-down Output Tray
Support Flap 2 (Support Flap 2)
- 8 Face-down Output Tray
- 9 Multi-purpose Tray (MP Tray)

**CD-ROM**

(including User's Guide and
Network User's Guide)

**Quick Setup Guide****Drum Unit and Toner
Cartridge Assembly****AC Power Cord**

! WARNING

Plastic bags are used in the packaging of your printer. To avoid danger of suffocation, please keep these bags away from babies and children.

Note

- Save all packing materials and the box in case for any reason you must ship your printer.
- The interface cable is not a standard accessory. Buy the appropriate interface cable for the interface you want to use (USB, Parallel or Network).

USB cable

- Please make sure you use a USB 2.0 interface (Type A/B) cable that is no longer than 6 feet (2.0 meters).
- When you use a USB cable, make sure you connect it to the USB port of your computer and not to a USB port on a keyboard or non-powered USB hub.

Parallel cable

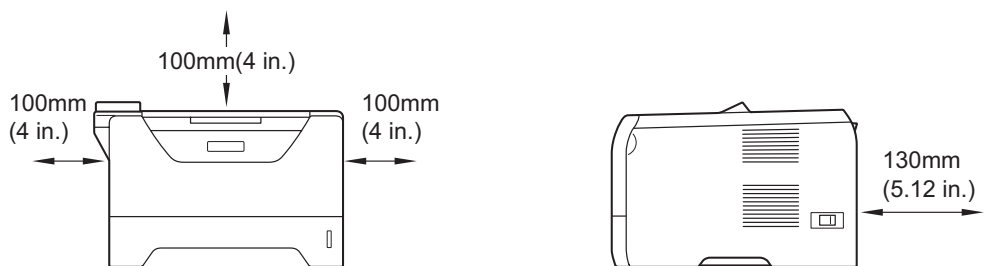
DO NOT use a parallel interface cable that is longer than 6 feet (2.0 meters). Use a shielded interface cable that is IEEE 1284-compliant.

Network cable

Use a straight-through Category5 (or greater) twisted-pair cable for 10BASE-T or 100BASE-TX Fast Ethernet Network.

Note

Keep a minimum gap around the printer as shown in the illustration.



Symbols used in this guide

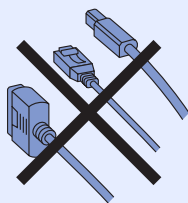
	WARNING	WARNINGS tell you what to do to prevent possible personal injury.
	CAUTION	CAUTIONS specify procedures you must follow or avoid to prevent possible minor injuries.
	IMPORTANT	IMPORTANT specify procedures you must follow or avoid to prevent possible damage to the printer or other objects.
		Electrical Hazard icons alert you to a possible electrical shock.
		Hot Surface icons warn you not to touch machine parts that are hot.
	Note	Notes tell you how you should respond to a situation that may arise or give tips about how the current operation works with other features.
	User's Guide Network User's Guide	Indicates reference to the User's Guide or Network User's Guide which is on the CD-ROM we have supplied.

2

Install the drum unit and toner cartridge assembly

! IMPORTANT

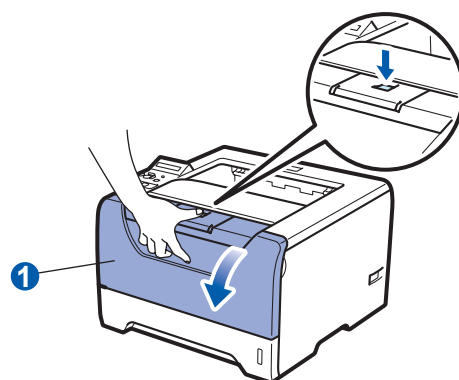
DO NOT connect the interface cable yet.



- a** Remove the packing tape from the outside of the printer.

b

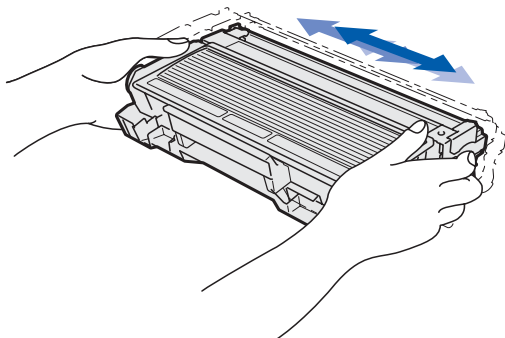
Press the front cover release button and open the front cover 1.



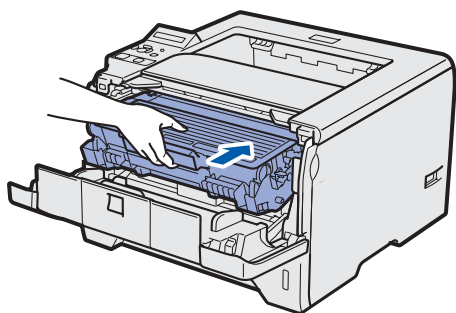
c

Unpack the drum unit and toner cartridge assembly.

- d** Gently shake it from side to side several times to distribute the toner evenly inside the assembly.



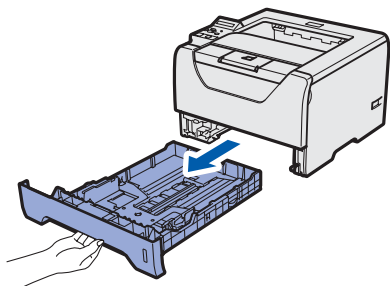
- e** Put the drum unit and toner cartridge assembly into the printer until it clicks into place.



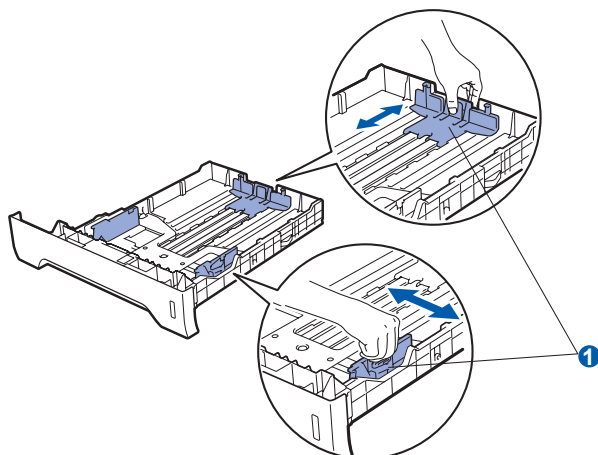
- f** Close the front cover of the printer.

3 Load paper in the paper tray

- a** Pull the paper tray completely out of the printer.

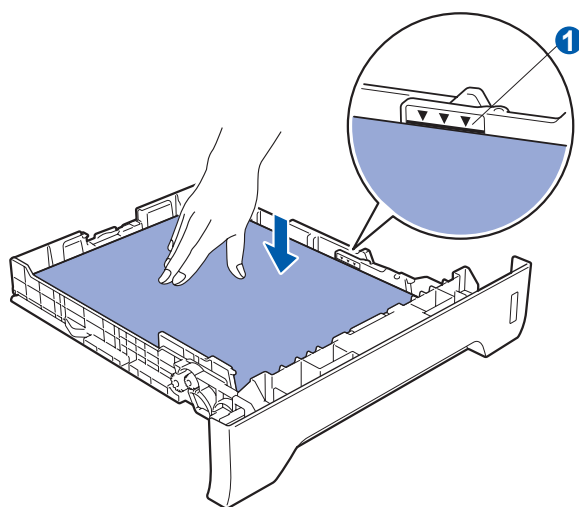


- b** While pressing the blue paper-guide release lever **1**, slide the paper guides to fit the paper size you are loading in the tray. Make sure that the guides are firmly in the slots.



- c** Fan the stack of paper well to avoid paper jams and misfeeds.

- d** Put paper in the tray, and make sure that the paper is below the maximum paper mark **1**. The side to be printed on must be face down.



! IMPORTANT

Make sure the paper guides touch the sides of the paper so it will feed properly.

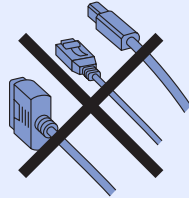
- e** Put the paper tray firmly back in the printer. Make sure that it is completely inserted into the printer.

4

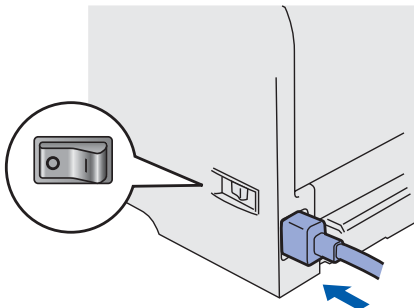
Print a test page

! IMPORTANT

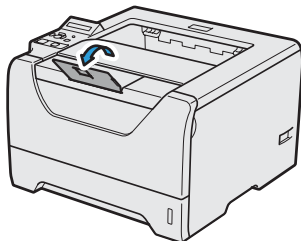
DO NOT connect the interface cable yet.



- a** Make sure that the printer power switch is off. Connect the AC power cord to the printer.

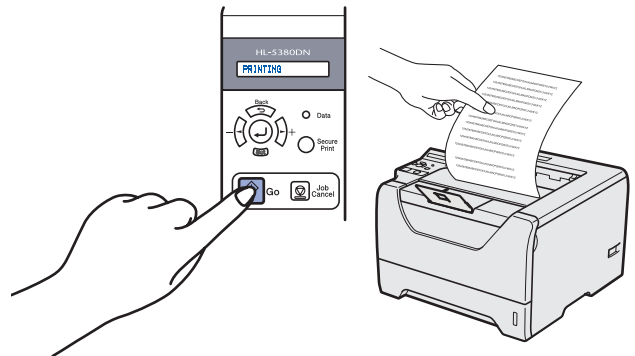


- b** Turn on the printer power switch.
c Unfold support flap1.



- d** After the printer has finished warming up, the LCD shows **READY**.

- e** Press **Go**. The printer prints a test page. Check that the test page has printed correctly.



Note

This function will not be available after the first print job you send from your computer.

5

Setting your language on the control panel

- a** Press **+** until the LCD shows **SETUP**. Press **Set**.

SETUP

- b** Press **Set** again.

LANGUAGE

- c** Press **+** or **-** to choose your language. Press **Set** to accept.

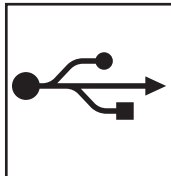
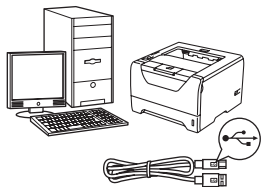
=ENGLISH

Now go to

Go to the next page to install the printer driver.

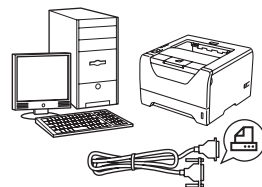
6

Choose your connection type



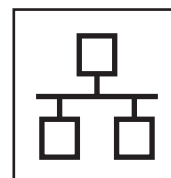
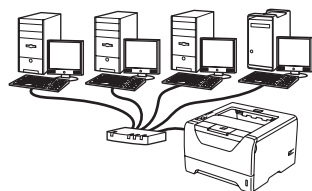
For USB interface cable

Windows[®], go to page 6
Macintosh, go to page 8



For Parallel interface cable

Windows[®], go to page 9



For Wired Network

Windows[®], go to page 11
Macintosh, go to page 15

USB	Windows [®]
	Macintosh
Parallel	Windows [®]
Wired Network	Windows [®]
	Macintosh

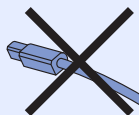


For USB Interface Cable Users

7 Install the printer driver and connect the printer to your computer

IMPORTANT

DO NOT connect the USB interface cable yet.



Note

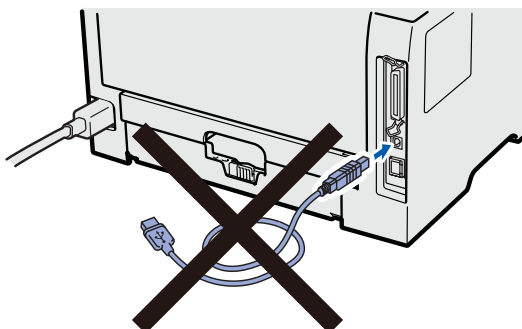
If the **Found New Hardware Wizard** appears on your computer, click **Cancel**.



- a** Turn off the printer power switch.



- b** Make sure the USB interface cable is **NOT** connected to the printer, and then begin installing the printer driver. If you have already connected the cable, remove it.



- c** Turn on your computer. (You must be logged on with Administrator rights.)

- d** Put the supplied CD-ROM into your CD-ROM drive. The opening screen will appear automatically. Choose your printer model and the language.

- e** Click **Install Printer Driver** on the menu screen.

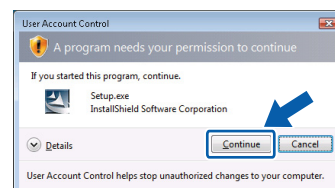


- f** Click **USB cable users**.



Note

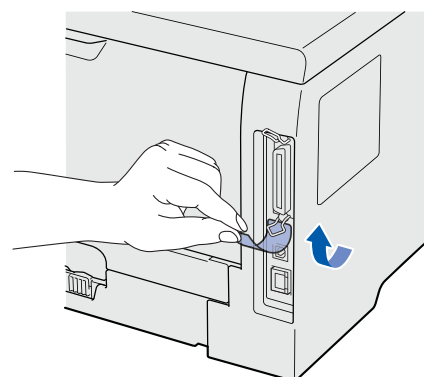
- For Windows Vista®, when the **User Account Control** screen appears, click **Continue**.



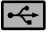
- If you want to install the PS driver (Brother's BR-Script Driver), choose **Custom setup** and then follow the on-screen instructions. When the **Select Components** screen appears, check **PS (PostScript Emulation) Driver**, and then continue following the on-screen instructions.

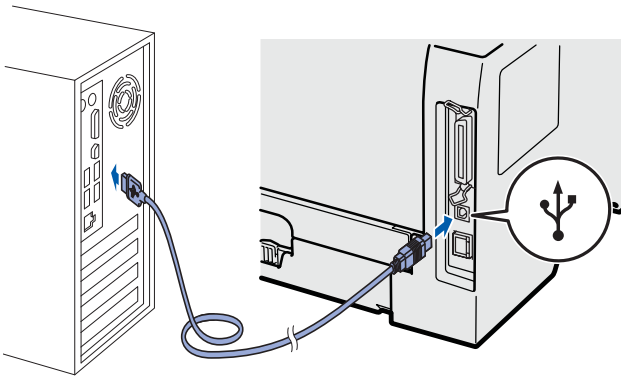
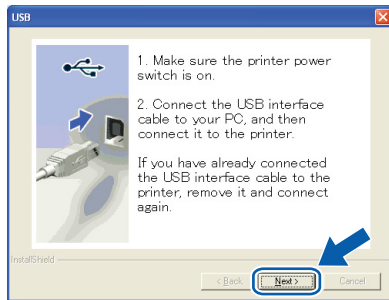
- g** When the **License Agreement** window appears, click **Yes** if you agree to the License Agreement.

- h** Remove the label covering the USB interface connector.





- i** When this screen appears, make sure the printer power switch is on. Connect the USB cable to the USB connector marked with a  symbol, and then connect the cable to the computer. Click **Next**.



- j** Click **Finish**.



Note

- If you want to register your product on-line, check **On-Line Registration**.
- If you do not want to set your printer as Default printer, uncheck **Set as Default Printer**.
- If you want to disable the Status Monitor, uncheck **Enable Status Monitor**.

Finish

The installation is now complete.



Note

XML Paper Specification Printer Driver

The XML Paper Specification Printer Driver is the most suitable driver when printing from the applications that use the XML Paper Specification documents. Please download the latest driver by accessing the Brother Solutions Center at <http://solutions.brother.com/>.

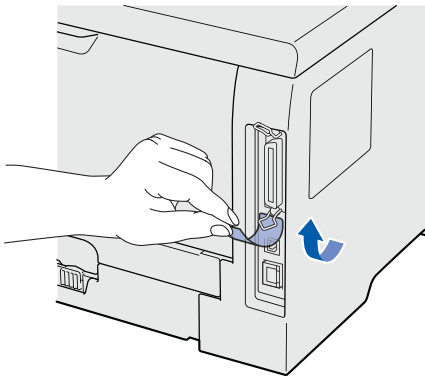



For USB Interface Cable Users

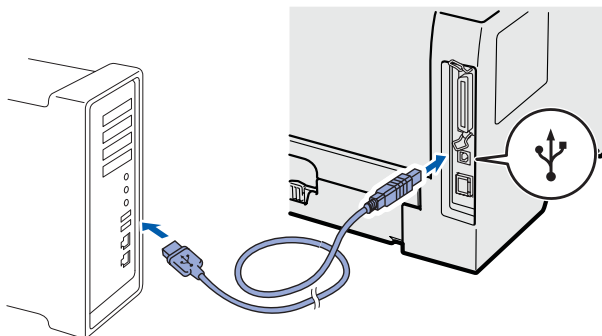
7

 Connect the printer to your Macintosh and install the driver

- a** Remove the label covering the USB interface connector.



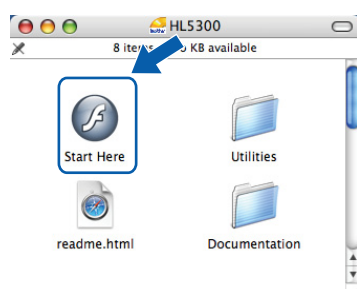
- b** Connect the USB cable to the USB connector marked with a  symbol, and then connect the cable to your Macintosh.



! IMPORTANT

DO NOT connect the printer to a USB port on a keyboard or a non-powered USB hub.

- c** Make sure the printer power switch is on.
- d** Turn on your Macintosh. Put the supplied CD-ROM into your CD-ROM drive.
- e** Double-click the **HL5300** icon on your desktop. Double-click the **Start Here** icon. Follow the on-screen instructions.



- f** Click **Install Printer Driver** on the menu screen.



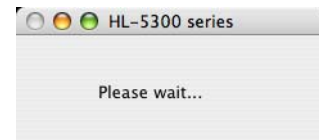
- g** Click **USB cable users** and follow the on-screen instructions. Then, restart your Macintosh.



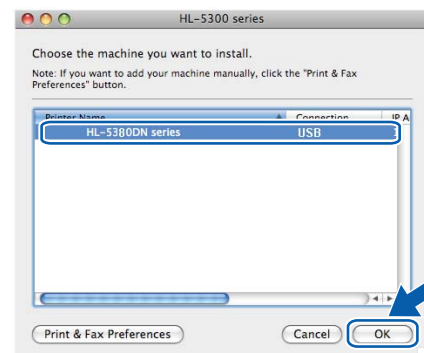
Note

Please see the User's Guide on the CD-ROM to install the PS driver (Brother's BR-Script Driver).

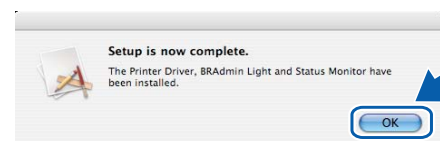
- h** The Brother software will search for the Brother printer. During this time the following screen will appear.



- i** Choose the printer you wish to connect, and then click **OK**.



- j** When this screen appears, click **OK**.



Finish

The installation is now complete.

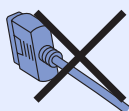


For Parallel Interface Cable Users

7 Install the driver and connect the printer to your computer

! IMPORTANT

DO NOT connect the parallel interface cable yet.



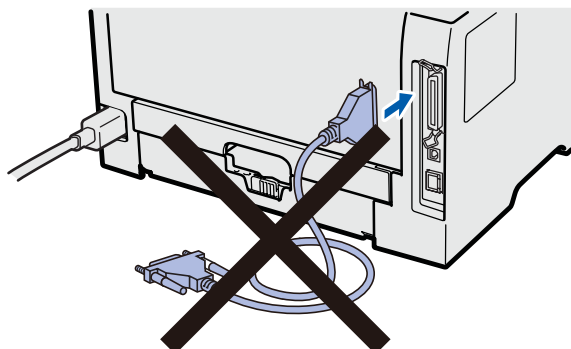
Note

If the **Found New Hardware Wizard** appears on your computer, click **Cancel**.



a Turn off the printer power switch.

b Make sure the parallel interface cable is **NOT** connected to the printer, and then begin installing the printer driver. If you have already connected the cable, remove it.



c Turn on your computer. (You must be logged on with Administrator rights.)

d Put the supplied CD-ROM into your CD-ROM drive. The opening screen will appear automatically. Choose your printer model and the language.

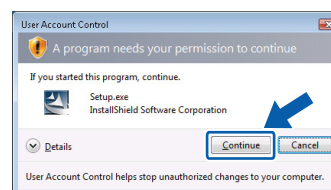
e Click **Install Printer Driver** on the Menu screen.



f Click **Parallel cable users**.

Note

- For Windows Vista®, when the **User Account Control** screen appears, click **Continue**.



- If you want to install the PS driver (Brother's BR-Script Driver), choose **Custom setup** and then follow the on-screen instructions. When the **Select Components** screen appears, check **PS (PostScript Emulation) Driver**, and then continue following the on-screen instructions.

g When the **License Agreement** window appears, click **Yes** if you agree to the License Agreement.

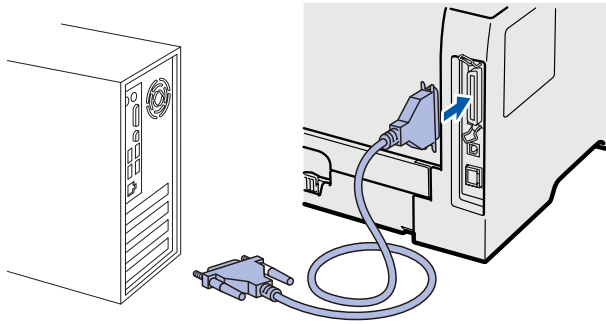
h Click **Finish**.

Note

- If you want to register your product on-line, check **On-Line Registration**.
- If you do not want to set your printer as Default printer, uncheck **Set as Default Printer**.
- If you want to disable the Status Monitor, uncheck **Enable Status Monitor**.



- i** Connect the parallel interface cable to your computer, and then connect it to your printer.



- j** Turn on the printer power switch.

Finish

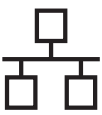
The installation is now complete.



Note

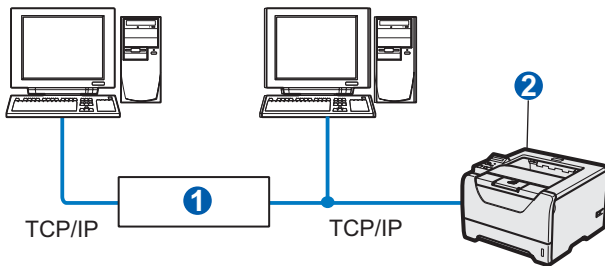
XML Paper Specification Printer Driver

The XML Paper Specification Printer Driver is the most suitable driver when printing from the applications that use the XML Paper Specification documents. Please download the latest driver by accessing the Brother Solutions Center at <http://solutions.brother.com/>.



For Wired Network Interface Cable Users

7 For Peer-to-Peer network printer users




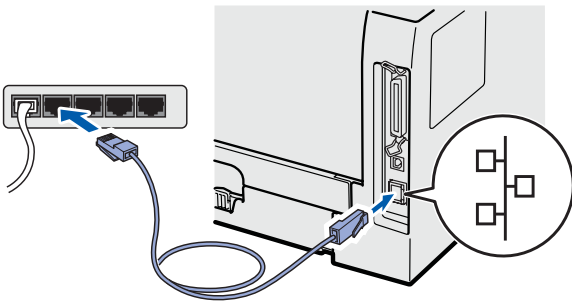
- ① Router
- ② Network printer

Note

If you are using Windows® Firewall or a firewall function of anti-spyware or antivirus applications, temporarily disable them. Once you are sure that you can print, configure the software settings following the instructions.

Connect the printer to your network and install the driver

- a Connect the network interface cable to the LAN connector marked with a  symbol and then connect it to a free port on your hub.



- b Make sure the printer power switch is on.



- c Turn on your computer. (You must be logged on with Administrator rights.)

- d Put the supplied CD-ROM into your CD-ROM drive. The opening screen will appear automatically. Choose your printer model and the language.

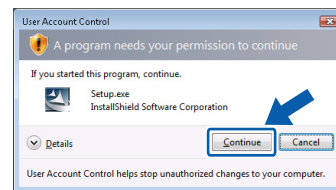
- e Click **Install Printer Driver** on the menu screen.



- f Click **Network cable users**.

Note

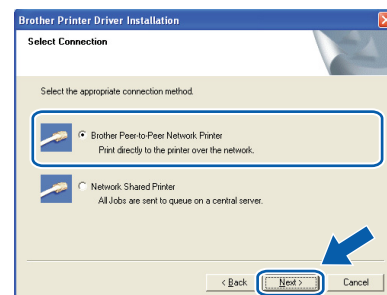
- For Windows Vista®, when the **User Account Control** screen appears, click **Continue**.

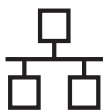


- If you want to install the PS driver (Brother's BR-Script Driver), choose **Custom setup** and then follow the on-screen instructions. When the **Select Components** screen appears, check **PS (PostScript Emulation) Driver**, and then continue following the on-screen instructions.

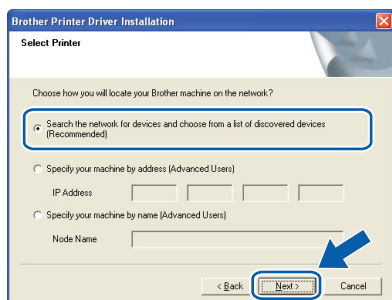
- g When the **License Agreement** window appears, click **Yes** if you agree to the License Agreement.

- h Choose **Brother Peer-to-Peer Network Printer**, and then click **Next**.





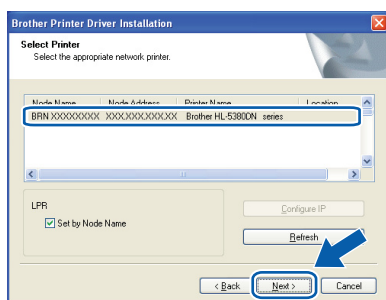
- i** Choose **Search the network for devices and choose from a list of discovered devices (Recommended)**. Or enter your printer's IP Address or its node name. Click **Next**.



Note

You can find your printer's IP Address and the node name by printing out the *Printer Settings Page*.

- j** Choose your printer, and then click **Next**.



Note

If your printer takes a long time (about 1 minute) to appear on the list, click **Refresh**.

- k** Click **Finish**.



Note

- If you want to register your product on-line, check **On-Line Registration**.
- If you do not want to set your printer as Default printer, uncheck **Set as Default Printer**.
- If you want to disable the Status Monitor, uncheck **Enable Status Monitor**.
- If you disabled your Personal Firewall software (e.g. Windows® Firewall), turn it back on.

Finish

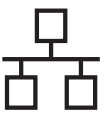
The installation is now complete.



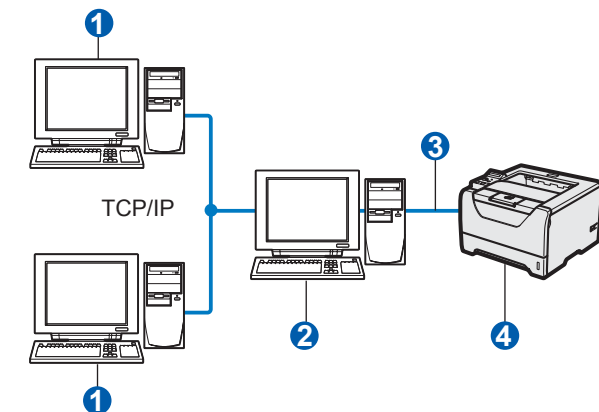
Note

XML Paper Specification Printer Driver

The XML Paper Specification Printer Driver is the most suitable driver when printing from the applications that use the XML Paper Specification documents. Please download the latest driver by accessing the Brother Solutions Center at <http://solutions.brother.com/>.



7 For shared network printer users



- 1 Client computer
- 2 Also known as "Server" or "Print server"
- 3 TCP/IP or USB or Parallel
- 4 Printer

Note

If you are going to connect to a shared printer on your network, we recommend that you ask your system administrator about the queue or share name for the printer prior to installation.

Install the driver and choosing the correct printer queue or share name

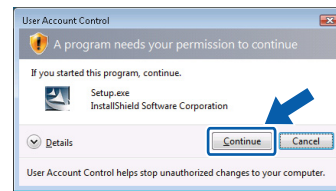
- a Turn on your computer. (You must be logged on with Administrator rights.)
- b Put the supplied CD-ROM into your CD-ROM drive. The opening screen will appear automatically. Choose your printer model and the language.
- c Click **Install Printer Driver** on the menu screen.



- d Click **Network cable users**.

Note

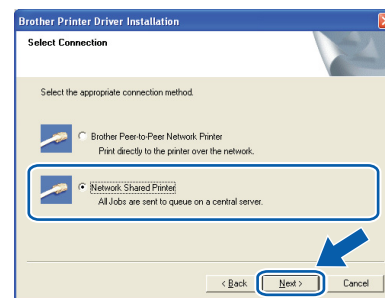
- For Windows Vista®, when the **User Account Control** screen appears, click **Continue**.



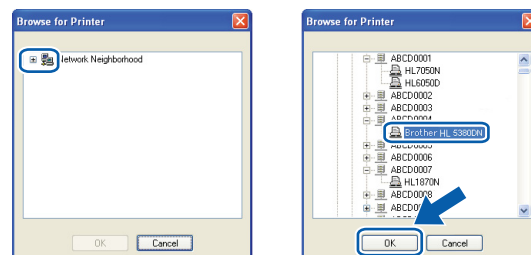
- If you want to install the PS driver (Brother's BR-Script Driver), choose **Custom setup** and then follow the on-screen instructions. When the **Select Components** screen appears, check **PS (PostScript Emulation) Driver**, and then continue following the on-screen instructions.

- e When the **License Agreement** window appears, click **Yes** if you agree to the License Agreement.

- f Choose **Network Shared Printer**, and then click **Next**.

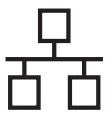


- g Choose your printer's queue, and then click **OK**.



Note

Contact your administrator if you do not know the location or the name of the printer in the network.



h Click **Finish**.



Note

- If you want to register your product on-line, check **On-Line Registration**.
- If you do not want to set your printer as Default printer, uncheck **Set as Default Printer**.
- If you want to disable the Status Monitor, uncheck **Enable Status Monitor**.

Finish

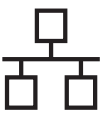
The installation is now complete.



Note


XML Paper Specification Printer Driver

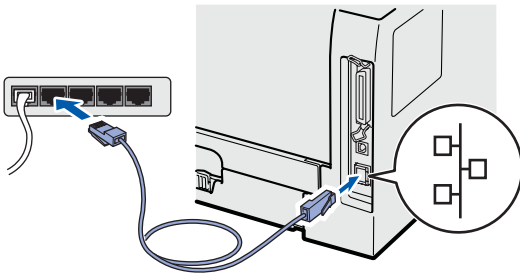
The XML Paper Specification Printer Driver is the most suitable driver when printing from the applications that use the XML Paper Specification documents. Please download the latest driver by accessing the Brother Solutions Center at <http://solutions.brother.com/>.



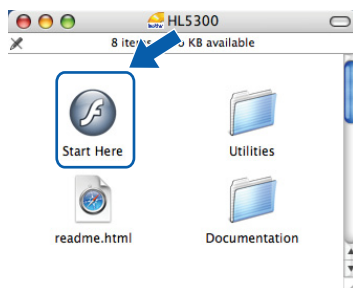
For Wired Network Interface Cable Users

7 Connect the printer to your Macintosh and install the driver

- a** Connect the network interface cable to the LAN connector marked with a  symbol and then connect it to a free port on your hub.



- b** Make sure the printer power switch is on.
- c** Turn on your Macintosh. Put the supplied CD-ROM into your CD-ROM drive.
- d** Double-click the **HL5300** icon on your desktop. Double-click the **Start Here** icon. Follow the on-screen instructions.



- e** Click **Install Printer Driver** on the menu screen.

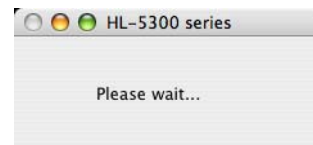


- f** Click **Network cable users** and follow the on-screen instructions. Then, restart your Macintosh.

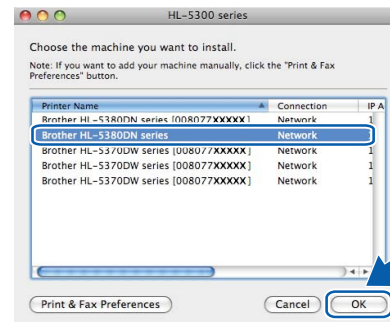
Note

Please see the User's Guide on the CD-ROM to install the PS driver (Brother's BR-Script Driver).

- g** The Brother software will search for the Brother printer. During this time the following screen will appear.



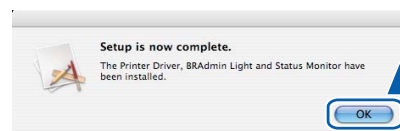
- h** Choose the printer you wish to connect, and then click **OK**.



Note

- If there is more than one of the same printer model connected on your network, the MAC Address (Ethernet Address) will be displayed after the model name. You can also confirm your IP Address by scrolling to the right.
- You can find your printer's MAC Address (Ethernet Address) and the IP Address by printing out the Printer Settings Page.

- i** When this screen appears, click **OK**.



Finish

The installation is now complete.

Safety precautions

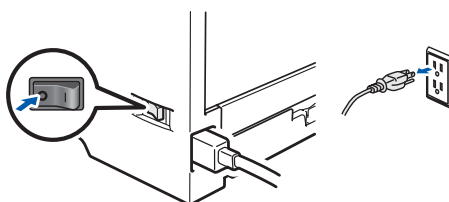
To use the printer safely

If you DO NOT follow these safety instructions, there is a possibility of a fire, electrical shock, burn or suffocation. Please keep these instructions for later reference and read them before attempting any maintenance.

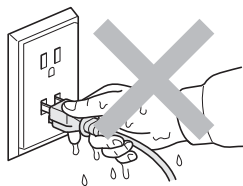
WARNING



There are high voltage electrodes inside the printer. Before you clean the inside of the printer, make sure that you have turned off the power switch and unplugged the printer from the AC power outlet.



DO NOT handle the plug with wet hands. Doing this might cause an electrical shock.



Always make sure the plug is fully inserted.

Plastic bags are used in the packaging. To avoid danger of suffocation, keep these bags away from babies and children.

DO NOT use flammable substances, any type of spray or any organic solvent/liquids containing alcohol or ammonia to clean the inside or outside of the printer. Doing this may cause a fire or electrical shock. Refer to *Chapter 6 of the User's Guide* for how to clean the printer.



DO NOT use a vacuum cleaner to clean up scattered toner. Doing this might cause the toner dust to ignite inside the vacuum cleaner, potentially starting a fire. Carefully clean the toner dust with a dry, lint-free cloth and dispose of it according to local regulations.

Cleaning the outside of the printer:

- Make sure that you have unplugged the printer from the AC power outlet.
- Use neutral detergents. Cleaning with volatile liquids such as thinner or benzene will damage the outside surface of the printer.
- DO NOT use cleaning materials that contain ammonia.

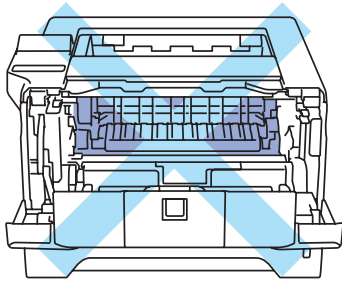
Other Information

CAUTION

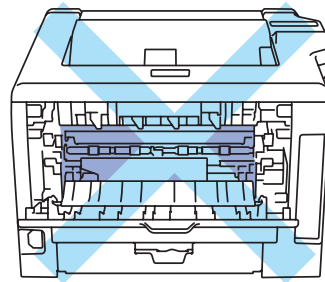
Lightning and power surges can damage this product! We recommend that you use a quality surge protection device on the AC power outlet, or unplug the cords during a lightning storm.



After you have just used the printer, some internal parts of the printer will be extremely hot. When you open the front or back cover (back output tray) of the printer, DO NOT touch the shaded parts shown in the illustration.



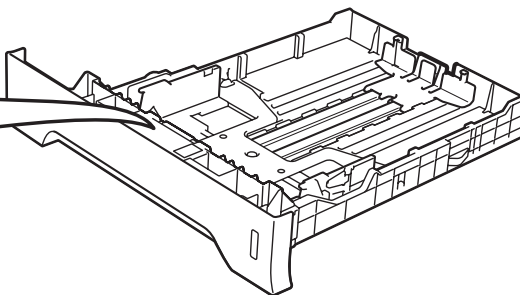
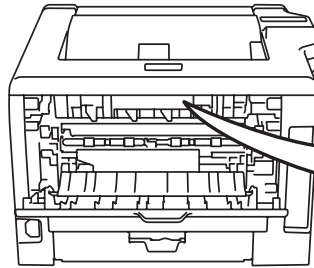
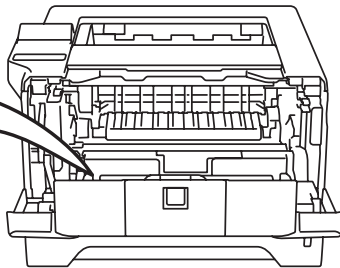
Inside the printer
(Front View)



Inside the printer
(Back View)

IMPORTANT

DO NOT remove or damage the caution labels located on or around the fuser inside the printer.



Regulations

EC Declaration of Conformity



EC Declaration of Conformity

Manufacturer

Brother Industries Ltd.
15-1, Naeshiro-cho, Mizuho-ku, Nagoya 467-8561 Japan

Plant

Brother Technology (Shenzhen) Ltd.,
NO6 Gold Garden Ind. Nanling Buji, Longgang, Shenzhen, China

Herewith declare that:

Product description : Laser Printer
Product Name : HL-5380DN
Model Number : HL-53

is in conformity with provisions of the Directives applied : Low Voltage Directive 2006/95/EC and the Electromagnetic Compatibility Directive 2004/108/EC.

Harmonized standards applied :

Safety	EN60950-1:2006
EMC	EN55022:2006 Class B EN55024:1998 + A1:2001 + A2:2003 EN61000-3-2:2006 EN61000-3-3:1995 + A1:2001 + A2:2005

Year in which CE marking was first affixed : 2008

Issued by : Brother Industries, Ltd.

Date : 3rd September, 2008

Place : Nagoya, Japan

Signature :

Junji Shiota
General Manager
Quality Management Dept.

International ENERGY STAR® Compliance Statement

The purpose of the International ENERGY STAR® Program is to promote the development and popularization of energy-efficient office equipment. As an ENERGY STAR® Partner, Brother Industries, Ltd. has determined that this product meets the ENERGY STAR® guidelines for energy efficiency.



IEC 60825-1+A2:2001 Specification

This machine is a Class 1 laser product as defined in IEC 60825-1+A2: 2001 specifications. The label shown below is attached in countries where required.



This machine has a Class 3B Laser Diode which emits invisible laser radiation in the Laser Unit. The Laser Unit should not be opened under any circumstances.

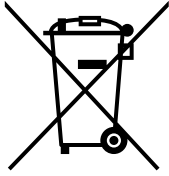
WARNING

Use of controls or adjustments or performance of procedures other than those specified in this manual may result in hazardous invisible radiation exposure.

Internal laser radiation

Maximum radiation power:	5 mW
Wave length:	770 - 810 nm
Laser class:	Class 3B

EU Directive 2002/96/EC and EN50419



European Union only

This equipment is marked with the above recycling symbol. It means that at the end of the life of the equipment you must dispose of it separately at an appropriate collection point and not place it in the normal domestic unsorted waste stream. This will benefit the environment for all. (European Union only)

IMPORTANT - For Your Safety

To ensure safe operation, the supplied three-pin plug must be inserted only into a standard three-pin power outlet that is properly grounded through the normal household wiring.

Extension cords used with this printer must be three-pin plug type and correctly wired to provide proper grounding. Incorrectly wired extension cords may cause personal injury and equipment damage.

The fact that the equipment operates satisfactorily does not imply that the power is grounded and that the installation is completely safe. For your safety, if in any doubt about the effective grounding of the power, call a qualified electrician.

This product should be connected to an AC power source within the range indicated on the rating label. DO NOT connect it to a DC power source. If you are not sure, contact a qualified electrician.

Disconnect device

This product must be installed near an AC power outlet that is easily accessible. In case of emergencies, you must disconnect the power cord from the AC power outlet to shut off power completely.

LAN connection



CAUTION

DO NOT connect this product to a LAN connection that is subject to over-voltages.

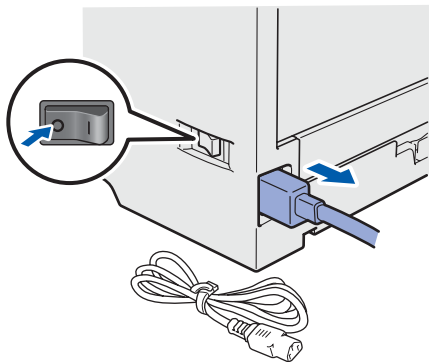
Shipment of the printer

If for any reason you must ship your printer, carefully package the printer to avoid any damage during transit. We recommend that you save and use the original packaging. The printer should also be adequately insured with the carrier.

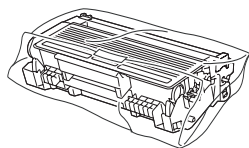
CAUTION

When shipping the printer, the DRUM UNIT and TONER CARTRIDGE assembly must be removed from the printer and put in a plastic bag. Failure to remove the unit and put it in a plastic bag before shipping may cause severe damage to the printer and may VOID THE WARRANTY.

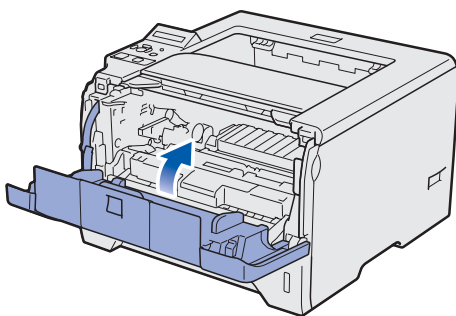
- a** Turn off the printer power switch, and then unplug the AC power cord.



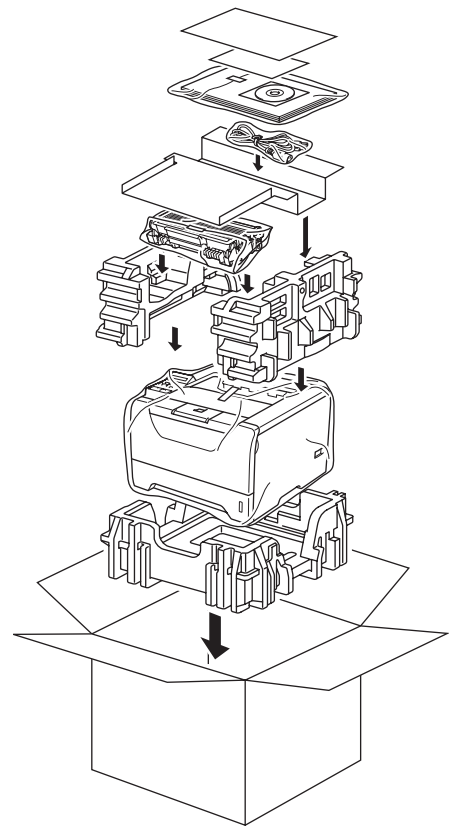
- b** Remove the drum unit and toner cartridge assembly. Put it in a plastic bag and seal the bag completely.



- c** Close the front cover.



- d** Repack the printer.



Supplied CD-ROM

You can find a variety of information on the CD-ROM.

Windows®



Install Printer Driver

Install the printer driver.

Install Other Drivers or Utilities

Install optional drivers, utilities and Network management tools.

Documentation

View the Printer User's Guide and Network User's Guide in HTML format.

You can also view the manuals in PDF format by accessing the Brother Solutions Center.

The User's Guide and Network User's Guide in HTML format will be installed automatically when you install the driver. Click the **Start, All Programs**¹, your printer, and then **User's Guide in HTML format**. If you do not want to install the User's Guide, choose **Custom setup** from **Install Printer Driver**, and uncheck **User's Guides in HTML format** when you install the driver.

¹ **Programs** for Windows® 2000 users

Brother Solutions Center

The Brother Solutions Center (<http://solutions.brother.com/>) is a one-stop resource for all your printer support needs. Download the latest drivers and utilities for your printer, read FAQs and troubleshooting tips, or learn about printer solutions.

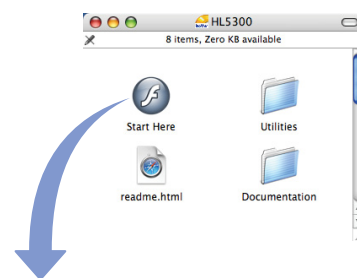
On-Line Registration

Register your product on-line.

Supplies Information

Visit our website for original/genuine Brother supplies at <http://www.brother.com/original/>.

Macintosh



Install Printer Driver

Install the printer driver.

Documentation

View the Printer User's Guide in HTML format.

You can also view the User's Guide in PDF format by accessing the Brother Solutions Center.

Brother Solutions Center

The Brother Solutions Center (<http://solutions.brother.com/>) is a one-stop resource for all your printer support needs. Download the latest drivers and utilities for your printer, read FAQs and troubleshooting tips, or learn about printer solutions.

On-Line Registration

Register your product on-line.

Supplies Information

Visit our website for original/genuine Brother supplies at <http://www.brother.com/original/>.

Note

For visually impaired users, we have prepared an HTML file on the supplied CD-ROM: readme.html. This file can be read by Screen Reader 'text-to-speech' software.

Control panel



1 Menu buttons

■ +

Move forward through menus.

■ -

Move backward through menus.

■ Set

Choose the control panel menu.

Select the chosen menus and settings.

■ Back

Go back one level in the menu structure.

2 Go button

Exit from the control panel menu and reprint setting.

Clear error messages.

Pause and Continue printing.

3 Job Cancel button

Stop and cancel the print operation in progress.

4 Secure Print

Print data saved in memory when you press your user name, choose the job, enter your password. Choose the number of extra copies (1-999).

It is recommended that you increase the RAMDISK size when you want to use the Secure Print functions.

5 Data LED: Yellow

■ On

Data is in the printer memory.

■ Blinking

Receiving / processing data or cooling down the printer.

■ Off

No remaining data in the memory.



For the control panel details, see Chapter 4 of the User's Guide on the CD-ROM.

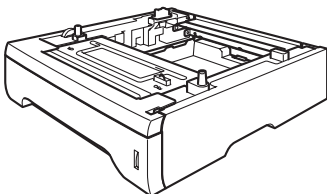
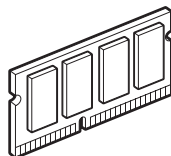
Options and Consumables

Options

The printer has the following optional accessories. You can expand the capabilities of the printer by adding these items. For more details about the optional Lower Tray Unit and compatible SO-DIMM Memory, visit us at <http://solutions.brother.com/>.



For installing these items, see Chapter 5 of the User's Guide on the CD-ROM.

Lower Tray Unit	SO-DIMM Memory
LT-5300	
	
Second lower paper tray unit can hold up to 250 sheets of paper. When the tray is installed, the printer expands total input capacity up to 550 sheets.	You can expand the memory by installing a (144-pin SO-DIMM) memory module.

Consumables

Please prepare a new consumable item for replacement when the following messages appear on the LCD.

TONER LOW

DRUM END SOON

When the time comes to replace consumable items, the following messages will appear on the LCD.

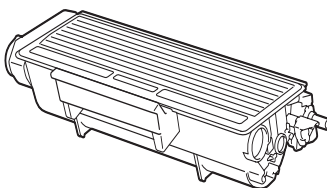
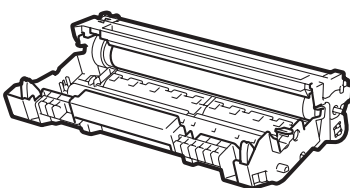
REPLACE TONER

REPLACE DRUM

When the time comes to replace consumable items, an error will be indicated by the LCD on the control panel. For more information about the consumables for your printer, visit us at <http://www.brother.com/original/> or contact your local Brother reseller.



For replacing the consumable items, see Chapter 6 of the User's Guide on the CD-ROM.

Toner cartridge	Drum unit
	

Trademarks

Brother and the Brother logo are registered trademarks and BRAdmin Light and BRAdmin Professional are trademarks of Brother Industries, Ltd.

Microsoft, Windows, Windows Server and Internet Explorer are registered trademarks of Microsoft Corporation in the United States and/or other countries.

Windows Vista is either a registered trademark or a trademark of Microsoft Corporation in the United States and/or other countries.

Apple, Macintosh and Safari are trademarks of Apple Inc., registered in the United States and other countries.

Each company whose software title is mentioned in this manual has a Software License Agreement specific to its proprietary programs.

All other trademarks are the property of their respective owners.

Compilation and Publication Notice

Under the supervision of Brother Industries Ltd., this manual has been compiled and published, covering the latest product descriptions and specifications.

The contents of this manual and the specifications of this product are subject to change without notice.

Brother reserves the right to make changes without notice in the specifications and materials contained herein and shall not be responsible for any damages (including consequential) caused by reliance on the materials presented, including but not limited to typographical and other errors relating to the publication.

This product is designed for use in a professional environment.

Copyright and License

© 2008 Brother Industries, Ltd.

© 1983-1998 PACIFIC SOFTWARES INC.

This product includes the "KASAGO TCP/IP" software developed by ELMIC WESCOM, INC.

© 2009 Devicescape Software, Inc.

This product includes RSA BSAFE Cryptographic software from RSA Security Inc.

Portions Copyright for ICC profiles 2003 by European Color Initiative, www.eci.org. ALL RIGHTS RESERVED.