

Before you can use the machine, read this Quick Setup Guide for the correct setup and installation.  
To view the Quick Setup Guide in other languages, please visit <http://solutions.brother.com/>.

## ! IMPORTANT

**DO NOT connect the interface cable yet.**



# 1

## Unpack the machine and check the components

	 USB Interface Cable	 User's Guide
	 AC Power Cord	 Quick Setup Guide
	 Drum Unit Assembly (including Standard Toner Cartridge)	 CD-ROMs (Windows®) (Macintosh)

## ! WARNING

Plastic bags are used in the packaging of your machine. To avoid danger of suffocation, please keep these bags away from babies and children.



### Note

- The components included in the box may differ depending on your country.
- Save all packing materials and the box in case for any reason you must ship your machine.
- The interface cable is not a standard accessory. Buy the appropriate interface cable for the interface you want to use (Parallel or Network).
- To ensure safe operation the supplied plug must be inserted only into a standard power outlet that is properly grounded through the standard electrical wiring. Non grounded equipment may cause an electrical shock hazard, and may cause excessive electrical noise radiation.

### USB cable

- Please make sure you use a USB 2.0 cable (Type A/B) that is no longer than 2 metres.
- **DO NOT** connect the interface cable at this time. Connecting the interface cable is done during MFL-Pro installation process.
- When you use a USB cable, make sure you connect it to the USB port of your computer and not to a USB port on a keyboard or non-powered USB hub.








### Parallel cable

**DO NOT** use a parallel interface cable that is longer than 2 metres. Use a shielded interface cable that is IEEE 1284-compliant.

### Network cable

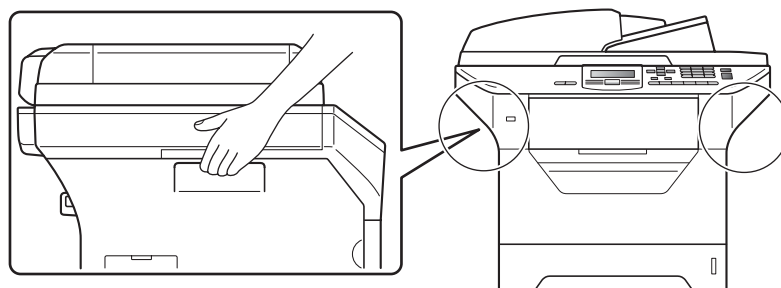
Use a straight-through Category5 (or greater) twisted-pair cable for 10BASE-T or 100BASE-TX Fast Ethernet Network.

## Symbols used in this guide

 <b>WARNING</b>	WARNINGS tell you what to do to prevent possible personal injury.
 <b>CAUTION</b>	CAUTIONS specify procedures you must follow or avoid to prevent possible minor injuries.
 <b>IMPORTANT</b>	IMPORTANT describes procedures you must follow or avoid to prevent possible machine problems or machine damage, or damage to other objects.
	Electrical Hazard icons alert you to a possible electrical shock.
	Hot Surface icons warn you not to touch machine parts that are hot.
 <b>Note</b>	Notes tell you how you should respond to a situation that may arise or give tips about how the current operation works with other features.
 User's Guide Software User's Guide Network User's Guide	Indicates reference to the User's Guide, Software User's Guide or Network User's Guide.

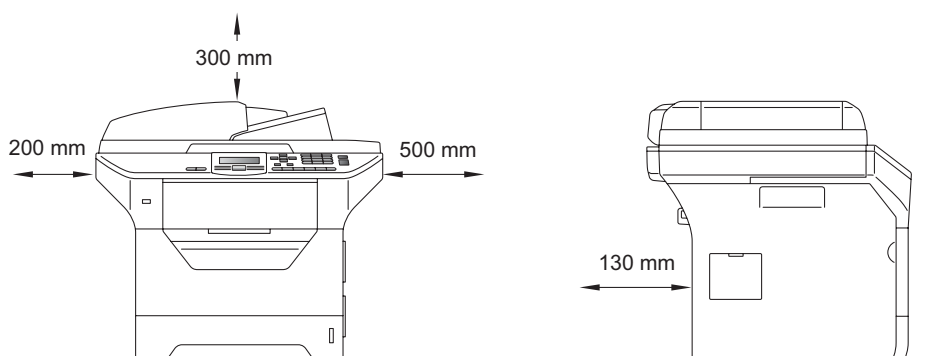
## CAUTION

When you move the machine, grasp the side handholds that are under the scanner. **DO NOT** carry the machine by holding it at the bottom.



## Note

Keep a minimum gap around the machine as shown in the illustration.



# 2

## Install the drum unit and toner cartridge assembly

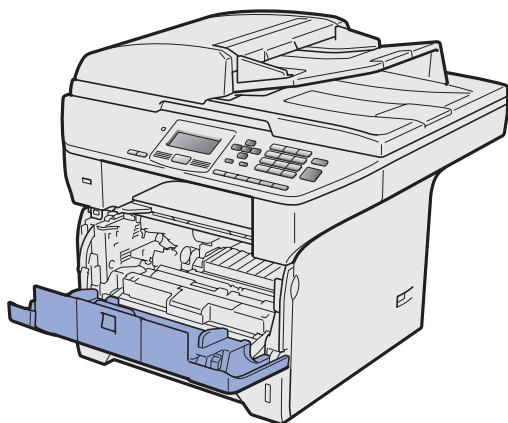
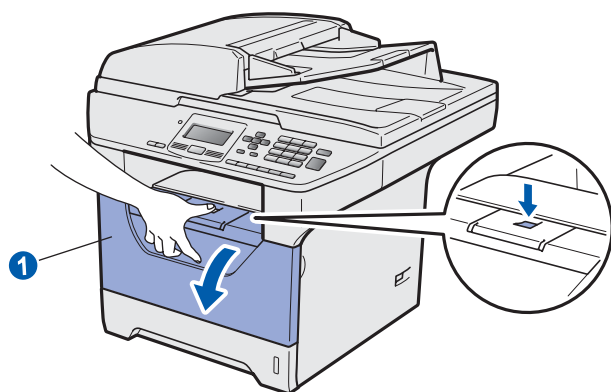
### ! IMPORTANT

DO NOT connect the interface cable yet.

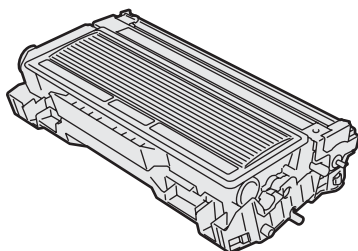


**a** Remove the protective tape and film covering the scanner glass.

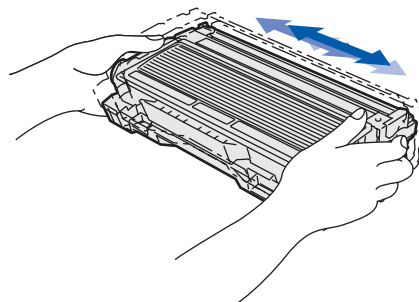
**b** Press the front cover release button and open the front cover ①.



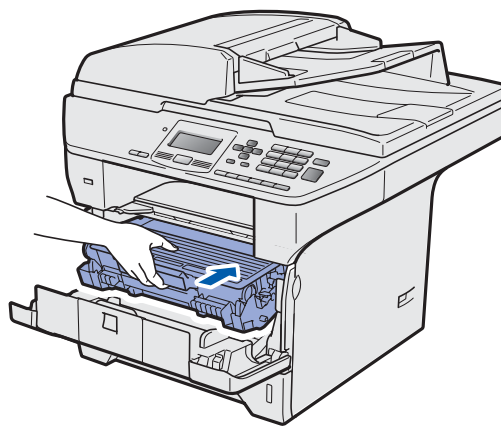
**c** Unpack the drum unit and toner cartridge assembly.



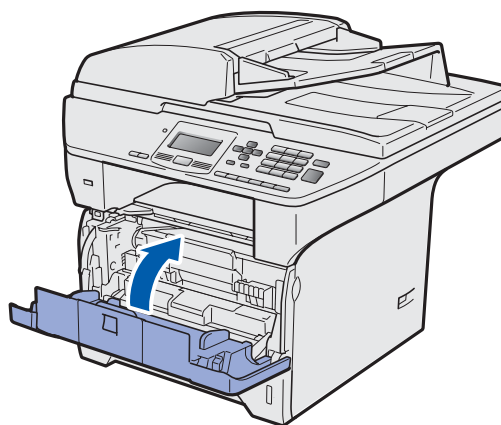
**d** Gently shake it from side to side several times to distribute the toner evenly inside the assembly.



**e** Put the drum unit assembly into the machine until it clicks into place.



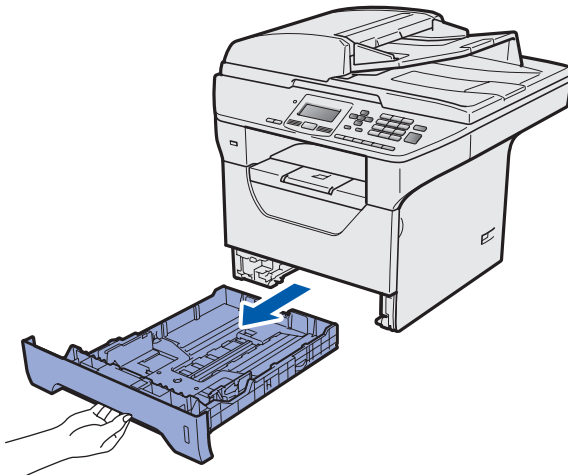
**f** Close the front cover of the machine.



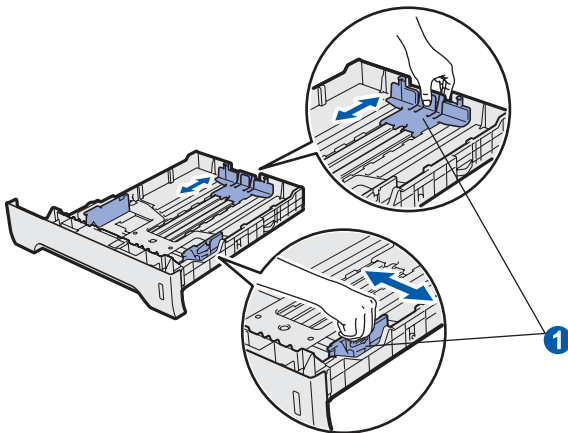
# 3

## Load paper in the paper tray

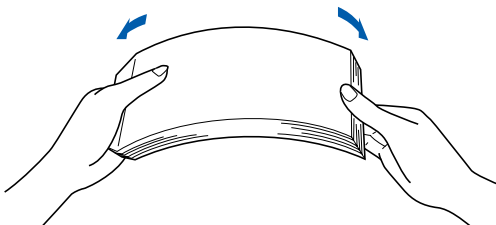
- a** Pull the paper tray completely out of the machine.



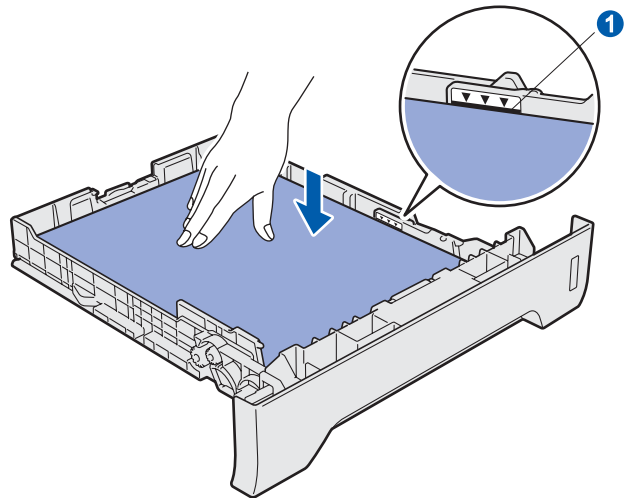
- b** While pressing the blue paper-guide release lever ①, slide the paper guides to fit the paper size you are loading in the tray. Make sure that the guides are firmly in the slots.



- c** Fan the stack of paper well to avoid paper jams and misfeeds.



- d** Put paper in the tray, and make sure that the paper is below the maximum paper mark ①. The side to be printed on must be face down.

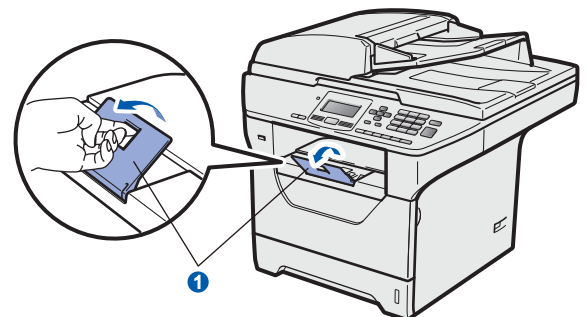


### ! IMPORTANT

**Make sure the paper guides touch the sides of the paper so it will feed correctly.**

- e** Put the paper tray firmly back in the machine. Make sure that it is completely inserted into the machine.

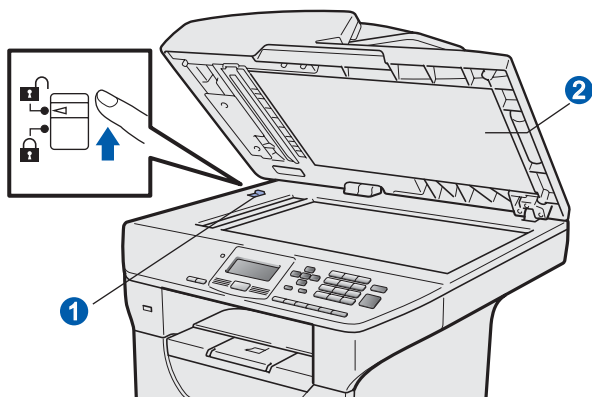
- f** Unfold the support flap ① to prevent paper from sliding off the output tray.



## 4 Release the scanner lock

Push the lever ① in the direction shown to unlock the scanner.

(The grey scanner lock lever is located at the back left side, under the document cover ②.)

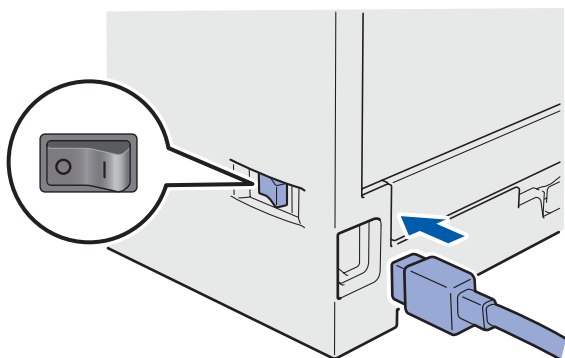


## 5 Connect the power cord

### ! IMPORTANT

**DO NOT connect the interface cable yet.**

- a** Make sure that the machine power switch is off. Connect the AC power cord to the machine.



- b** Plug the AC power cord into an AC outlet. Turn the power switch on.



### Note

If 扫描器被锁定 (Scanner Locked) appears on the LCD, immediately release the scanner lock and press **Stop/Exit**. (See Release the scanner lock on page 5.)

## 6 Choose your language (if needed)

- a** Press **Menu**.
- b** Press **1**.
- c** Press **0**.
- d** Press or choose your language. Press **OK**.
- e** Press **Stop/Exit**.

## 7 Set the LCD contrast (if needed)

If you are having difficulty reading the LCD, try changing the contrast setting.

- a** Press **Menu**.
- b** Press **1**.
- c** Press **5**.
- d** Press to increase the contrast.  
—OR—  
Press to decrease the contrast.  
Press **OK**.
- e** Press **Stop/Exit**.

## 8 Set the date and time

This setting allows the machine to name files created when using the Scan to USB feature.

**a** Press **Menu**.

**b** Press **6**.

**c** Press **1**.

**d** Enter the last two digits of the year on the dial pad, and then press **OK**.

61.Date&Time
Year:2009
Enter & OK Key

(e.g. Enter **0, 9** for 2009.)

**e** Enter the two digits for the month on the dial pad, and then press **OK**.

61.Date&Time
2009/XX/XX
Month:03
Enter & OK Key

(e.g. Enter **0, 3** for March.)

**f** Enter the two digits for the day on the dial pad, and then press **OK**.

61.Date&Time
2009/03/XX
Day:25
Enter & OK Key

(e.g. Enter **2, 5**.)

**g** Enter the time in 24-hour format on the dial pad, and then press **OK**.

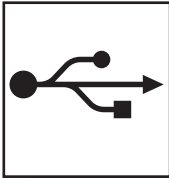
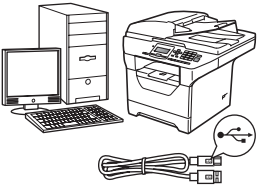
61.Date&Time
2009/03/25
Time:15:25
Enter & OK Key

(e.g. Enter **1 5, 2 5** for 3:25 P.M.)

**h** Press **Stop/Exit**.

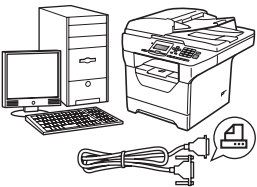
# 9

## Choose your connection type



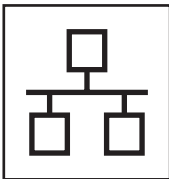
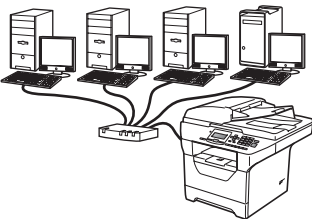
### For USB Interface Users

Windows<sup>®</sup>, go to page 8  
Macintosh, go to page 12



### For Parallel interface cable

Windows<sup>®</sup>, go to page 14



### For Wired Network

Windows<sup>®</sup>, go to page 18  
Macintosh, go to page 22

For Windows Server<sup>®</sup> 2003/ 2008, see the *Network User's Guide* on the CD-ROM.

USB	Windows <sup>®</sup>
	Macintosh
Parallel	Windows <sup>®</sup>
Wired Network	Windows <sup>®</sup>
	Macintosh



## For USB Interface Users (Windows® 2000 Professional/XP/XP Professional x64 Edition/ Windows Vista®)

### 10

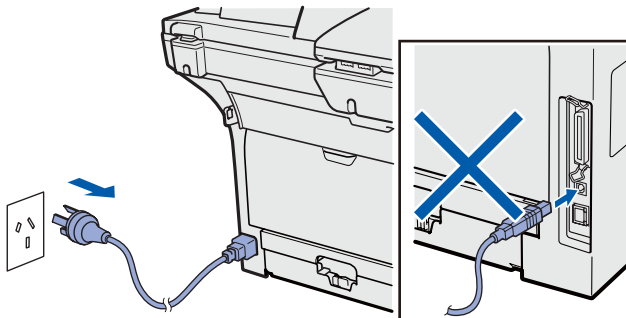
#### Before you install

- a** Make sure that your computer is ON and you are logged on with Administrator rights.

#### ! IMPORTANT

- **DO NOT** connect the USB cable yet.
- If there are any programs running, close them.
- Make sure a USB Flash memory device is not inserted into the machine.
- The screen may differ depending on the operating system.

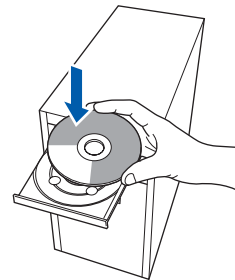
- b** Turn off and unplug the machine from the AC outlet and disconnect it from your computer, if you already connected an interface cable.



### 11

#### Install MFL-Pro Suite

- a** Put the supplied CD-ROM into your CD-ROM drive. If the model name screen appears, choose your machine. If the language screen appears, choose your language.



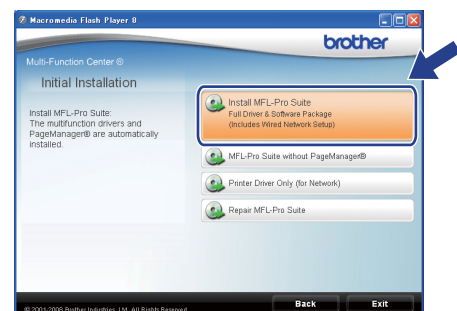
#### Note

If the Brother screen does not appear automatically, go to **My Computer (Computer)**, double-click the CD-ROM icon, and then double-click **Start.exe**.

- b** The CD-ROM top menu will appear. Click **Initial Installation**.



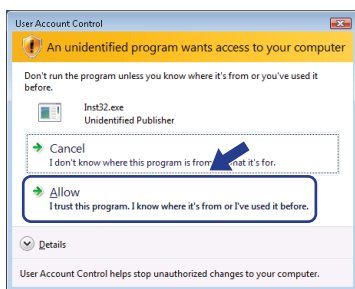
- c** Click **Install MFL-Pro Suite**.



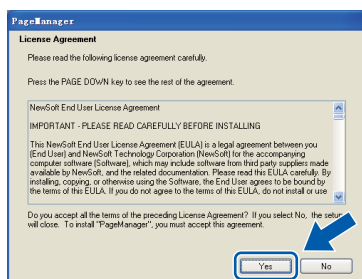


**Note**

- If the installation does not continue automatically, open the top menu again by ejecting and then reinserting the CD-ROM or double-click the **Start.exe** program from the root folder, and continue from step **c** to install MFL-Pro Suite.
- For Windows Vista®, when the **User Account Control** screen appears, click **Allow**.

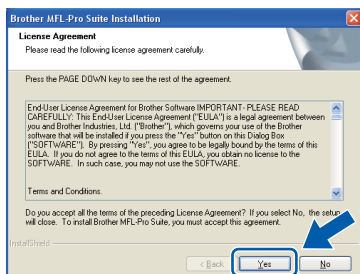


- d** When the Presto! PageManager **License Agreement** window appears, click **Yes** if you agree to the Software **License Agreement**.

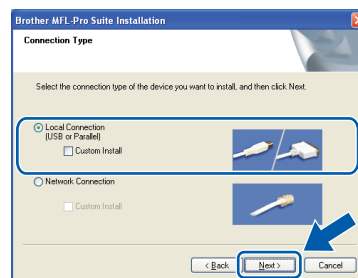


- e** The installation of Presto! PageManager will automatically start and is followed by the installation of MFL-Pro Suite.

- f** When the Brother MFL-Pro Suite Software **License Agreement** window appears, click **Yes** if you agree to the Software **License Agreement**.

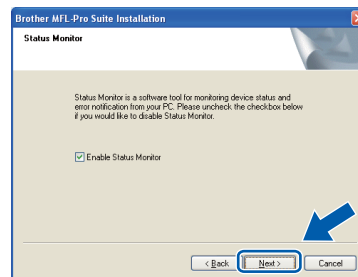


- g** Choose **Local Connection**, and then click **Next**. The installation continues.

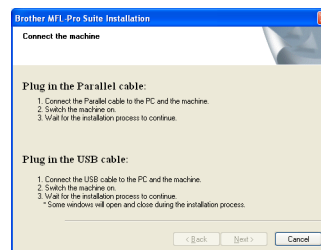
**Note**

If you want to install the PS driver (Brother's BR-Script Driver), choose **Custom Install** and then follow the on-screen instructions. When the **Select Features** screen appears, check **PS Printer Driver**, and then continue following the on-screen instructions.

- h** If you do not want to monitor the machine status and error notifications from your computer, uncheck **Enable Status Monitor** and then click **Next**.



- i** When this screen appears, go to the next step.





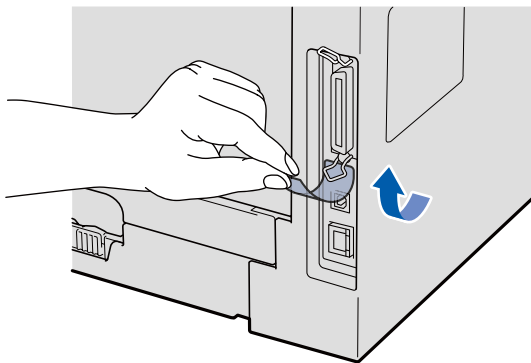
## 12


## Connect the USB cable

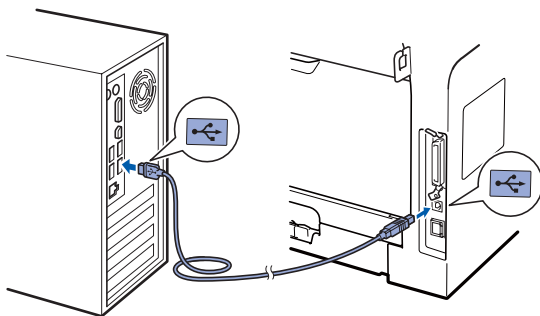
**! IMPORTANT**

- **DO NOT** connect the machine to a USB port on a keyboard or a non-powered USB hub.
- **Connect the machine directly to your computer.**

- a** Remove the label covering the USB interface connector.



- b** Connect the USB cable to the USB connector on the machine marked with the  symbol. Then connect the cable to your computer.



## 13

## Connect the power cord

- a** Plug the AC power cord into an AC outlet. Turn the power switch on.



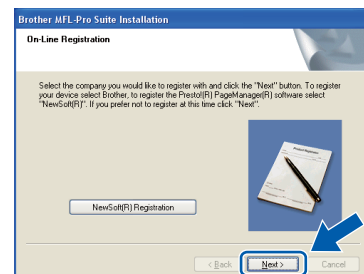
The installation will continue automatically.

The installation screens appear one after another.

**! IMPORTANT**

**DO NOT** cancel any of the screens during the installation. It may take a few seconds for all screens to appear.

- b** When the **On-Line Registration** screen is displayed, make your selection and follow the on-screen instructions. Once you have completed the registration process, close your web browser to return to this window. Then click **Next**.





## 14

## Finish and restart

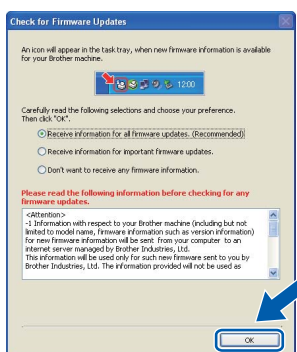
- a** Click **Finish** to restart your computer. After restarting the computer, you must be logged on with Administrator rights.



## Note

If an error message appears during the software installation, run the **Installation Diagnostics** located in **start/All Programs/Brother /DCP-XXXX** (where DCP-XXXX is your model name).

- b** If this screen appears, choose the firmware update setting and click **OK**.



## Note

Internet access is required for the firmware upgrade.

Finish

The installation is now complete.



## Note

**XML Paper Specification Printer Driver**  
The XML Paper Specification Printer Driver is the most suitable driver when printing from the applications that use the XML Paper Specification documents. Please download the latest driver by accessing the Brother Solutions Center at <http://solutions.brother.com/>.



## For USB Interface Users (Mac OS X 10.3.9 or greater)

### 11

#### Before you install

- a** Make sure your machine is connected to the power and your Macintosh is ON. You must be logged on with Administrator rights.

#### ! IMPORTANT

Make sure a USB Flash memory device is not inserted into the machine.

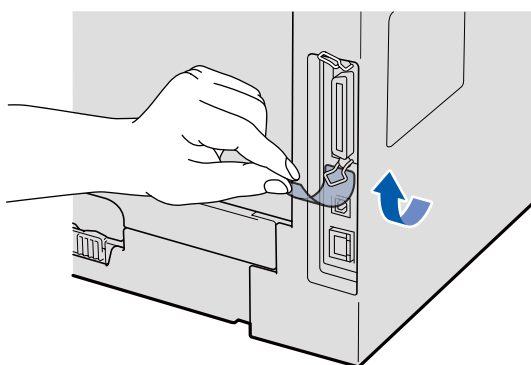
### 12

#### Connect the USB cable


#### ! IMPORTANT

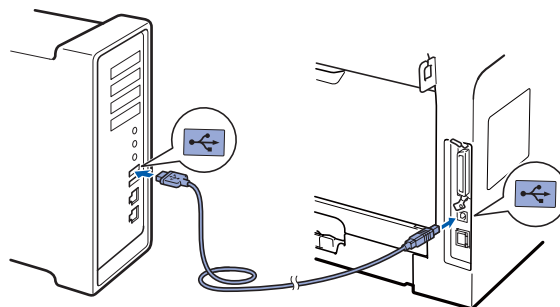
- **DO NOT** connect the machine to a USB port on a keyboard or a non-powered USB hub.
- Connect the machine directly to your Macintosh.

- a** Remove the label covering the USB interface connector.



#### b

Connect the USB cable to the USB connector on the machine marked with the  symbol. Then connect the cable to your computer.

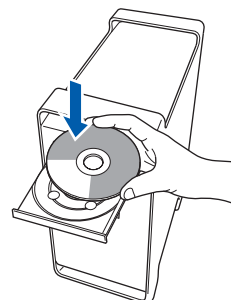


### 13

#### Install MFL-Pro Suite

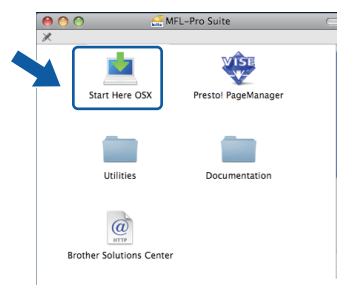
#### a

Put the supplied CD-ROM into your CD-ROM drive.



#### b

Double-click **Start Here OSX** to install.



Please wait, it will take a few seconds for the software to install. After the installation, click **Restart** to finish installing the software.

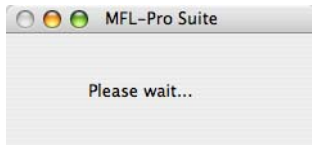


#### Note

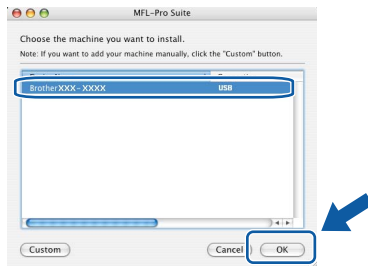
Please see the Software User's Guide on the CD-ROM if you want to install the PS driver. (Brother's BR-Script Driver)



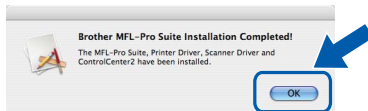
- c** The Brother software will search for the Brother device. During this time the following screen will appear.



- d** Choose the machine from the list, and then click **OK**.



- e** When this screen appears, click **OK**.

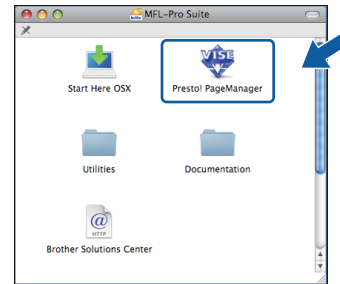


- OK!** The installation of MFL-Pro Suite is now complete.  
Go to step 14 on page 13.

## 14 Install Presto! PageManager

When Presto! PageManager is installed OCR capability is added to Brother ControlCenter2. You can easily scan, share and organize photos and documents using Presto! PageManager.

- a** Double-click **Presto! PageManager** and follow the on-screen instructions.



**Finish**

The installation is now complete.



## For Parallel Interface Users (Windows® 2000 Professional/XP/XP Professional x64 Edition)

### 11

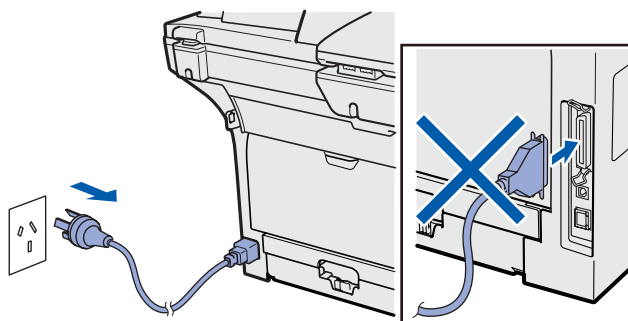
#### Before you install

- a** Make sure that your computer is ON and you are logged on with Administrator rights.

#### ! IMPORTANT

- **DO NOT** connect the Parallel cable yet.
- If there are any programs running, close them.
- Make sure a USB Flash memory device is not inserted into the machine.
- The screen may differ depending on the operating system.

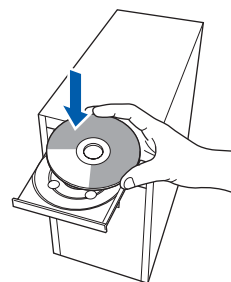
- b** Turn off and unplug the machine from the AC outlet and disconnect it from your computer, if you already connected an interface cable.



### 12

#### Install MFL-Pro Suite

- a** Put the supplied CD-ROM into your CD-ROM drive. If the model name screen appears, choose your machine. If the language screen appears, choose your language.



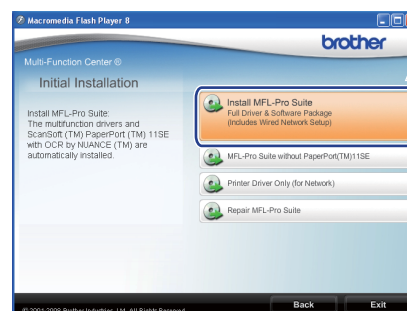
#### Note

If the Brother screen does not appear automatically, go to **My Computer (Computer)**, double-click the CD-ROM icon, and then double-click **Start.exe**.

- b** The CD-ROM top menu will appear. Click **Initial Installation**.



- c** Click **Install MFL-Pro Suite**

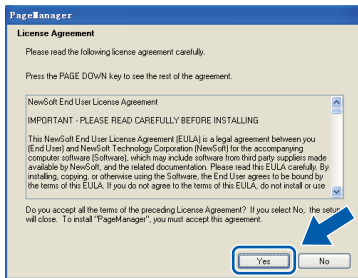




## Note

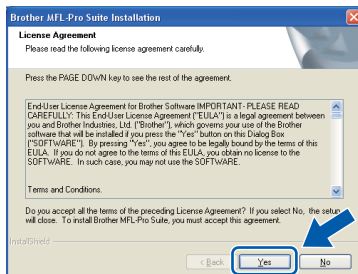
If the installation does not continue automatically, open the top menu again by ejecting and then reinserting the CD-ROM or double-click the **Start.exe** program from the root folder, and continue from **c** to install MFL-Pro Suite.

- d** When the Presto! PageManager **License Agreement** window appears, click **Yes** if you agree to the Software **License Agreement**.

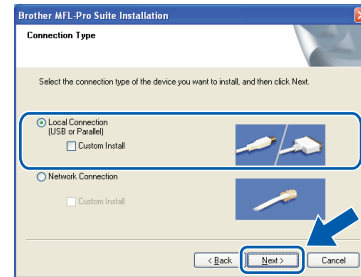


- e** The installation of Presto! PageManager will automatically start and is followed by the installation of MFL-Pro Suite.

- f** When the Brother MFL-Pro Suite Software **License Agreement** window appears, click **Yes** if you agree to the Software **License Agreement**.



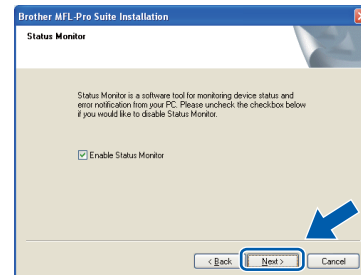
- g** Choose **Local Connection**, and then click **Next**. The installation continues.



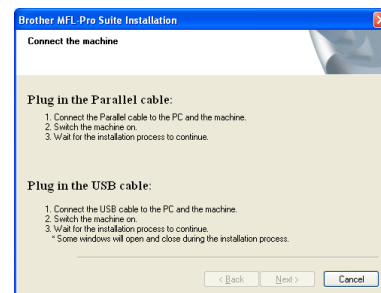
## Note

If you want to install the PS driver (Brother's BR-Script Driver), choose **Custom Install** and then follow the on-screen instructions. When the **Select Features** screen appears, check **PS Printer Driver**, and then continue following the on-screen instructions.

- h** If you do not want to monitor the machine status and error notifications from your computer, uncheck **Enable Status Monitor** and then click **Next**.



- i** When this screen appears, go to the next step.





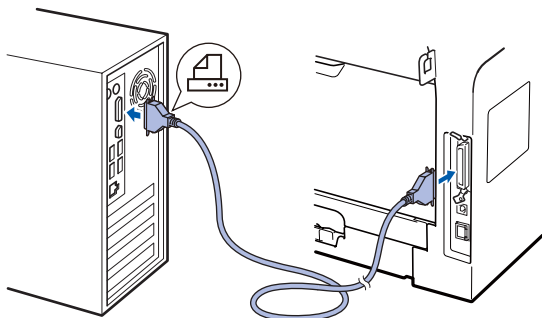
## 13

### Connect the Parallel cable

#### ! IMPORTANT

Connect the machine directly to your computer.

- a** Connect the Parallel interface cable to your computer, and then connect it to the machine.



## 14

### Connect the power cord

- a** Plug the AC power cord into an AC outlet. Turn the power switch on.

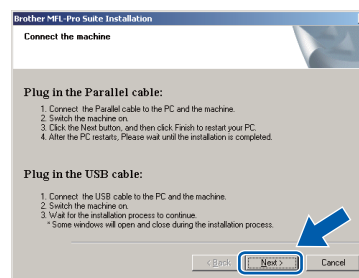


The installation will continue automatically.  
The installation screens appear one after another.

**b**

Do one of the following:

- For Windows® 2000 Professional users, click **Next**.



#### Note

If this screen appears, click **OK**.



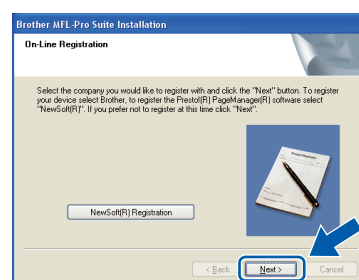
- For Windows® XP/XP Professional x64 Edition users, wait for a while since the installation of the Brother drivers will automatically start. The screens appear one after another.

#### ! IMPORTANT

**DO NOT** cancel any of the screens during the installation. It may take a few seconds for all screens to appear.

**c**

When the **On-Line Registration** screen is displayed, make your selection and follow the on-screen instructions. Once you have completed the registration process, close your web browser to return to this window. Then click **Next**.



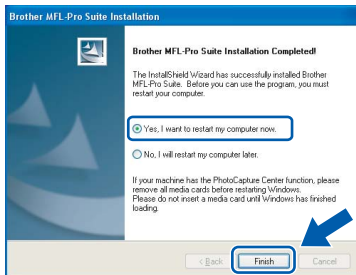




## 15

### Finish and restart

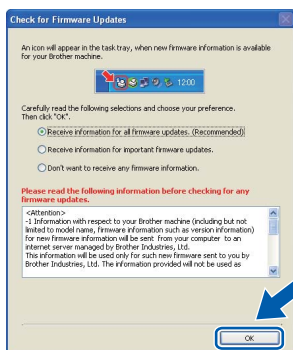
- a** Click **Finish** to restart your computer. After restarting the computer, you must be logged on with Administrator rights.



#### Note

If an error message appears during the software installation, run the **Installation Diagnostics** located in **start/All Programs/Brother /DCP-XXXX LPT** (where DCP-XXXX is your model name).

- b** If this screen appears, choose the firmware update setting and click **OK**.



#### Note

Internet access is required for the firmware upgrade.

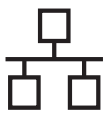
## Finish

The installation is now complete.



#### Note

**XML Paper Specification Printer Driver**  
The XML Paper Specification Printer Driver is the most suitable driver when printing from the applications that use the XML Paper Specification documents. Please download the latest driver by accessing the Brother Solutions Center at <http://solutions.brother.com/>.



## For Wired Network Interface Users (Windows® 2000 Professional/XP/XP Professional x64 Edition/ Windows Vista®)

### 11

#### Before you install

- a** Make sure that your computer is ON and you are logged on with Administrator rights.

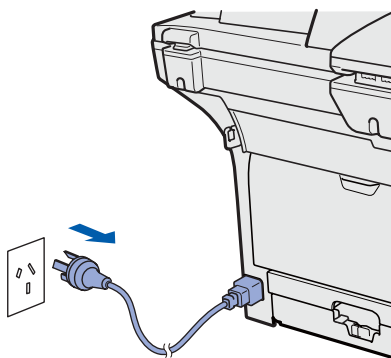
#### ! IMPORTANT

- If there are any programs running, close them.
- Make sure a USB Flash memory device is not inserted into the machine.
- The screens may differ depending on the operating system.

#### ! IMPORTANT


**Disable all personal firewall software (other than Windows® Firewall), anti-spyware or antivirus applications for the duration of the installation.**

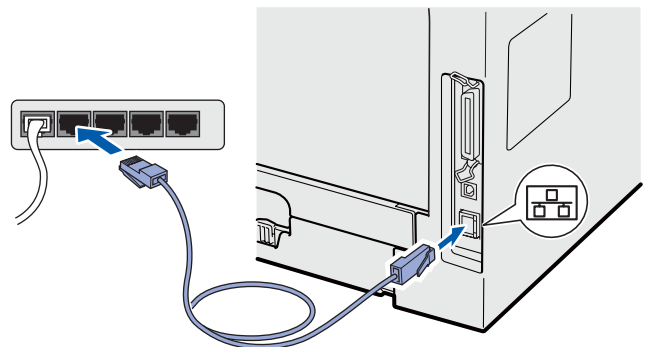
- b** Unplug the machine from the AC outlet.



### 12

#### Connect the network cable

- a** Connect the network interface cable to the LAN connector marked with a  symbol and then connect it to a free port on your hub.

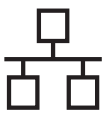


### 13

#### Connect the power cord

- a** Plug the AC power cord into an AC outlet. Turn the power switch on.

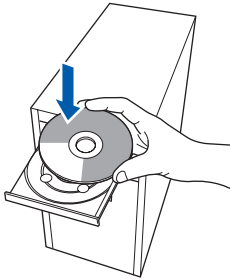




## 14

### Install MFL-Pro Suite

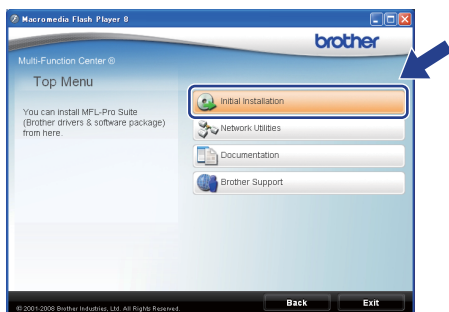
- a** Put the supplied CD-ROM into your CD-ROM drive. If the model name screen appears, choose your machine. If the language screen appears, choose your language.



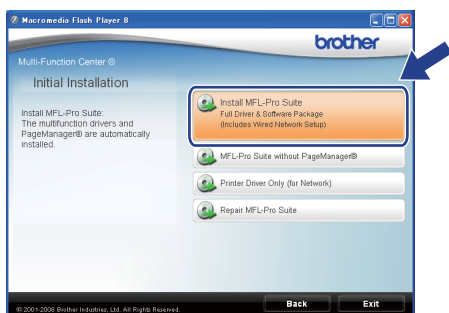
#### Note

If the Brother screen does not appear automatically, go to **My Computer (Computer)**, double-click the CD-ROM icon, and then double-click **Start.exe**.

- b** The CD-ROM top menu will appear. Click **Initial Installation**.

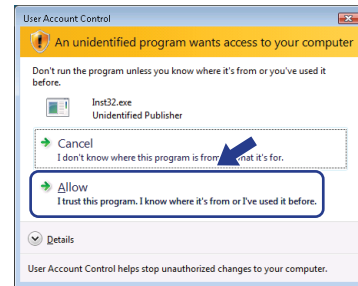


- c** Click **Install MFL-Pro Suite**.

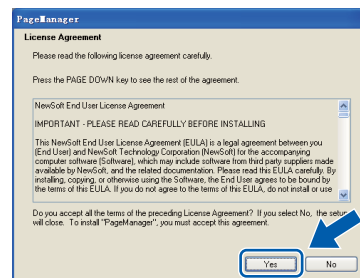


#### Note

- If the installation does not continue automatically, open the top menu again by ejecting and then reinserting the CD-ROM or double-click the **Start.exe** program from the root folder, and continue from **c** to install MFL-Pro Suite.
- For Windows Vista®, when the **User Account Control** screen appears, click **Allow**.

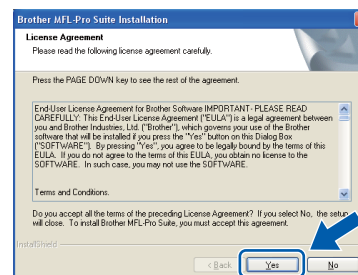


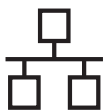
- d** When the Presto! PageManager **License Agreement** window appears, click **Yes** if you agree to the Software **License Agreement**.



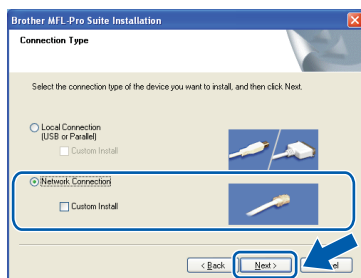
- e** The installation of Presto! PageManager will automatically start and is followed by the installation of MFL-Pro Suite.

- f** When the Brother MFL-Pro Suite Software **License Agreement** window appears, click **Yes** if you agree to the Software **License Agreement**.





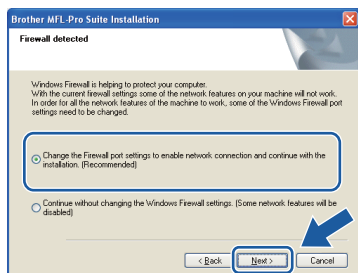
- g** Choose **Network Connection**, and then click **Next**.



## Note

If you want to install the PS driver (Brother's BR-Script Driver), choose **Custom Install** and then follow the on-screen instructions. When the **Select Features** screen appears, check **PS Printer Driver**, and then continue following the on-screen instructions.

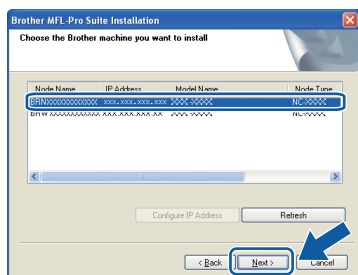
- h** For Windows® XP SP2/XP Professional x64 Edition/ Windows Vista® users, when this screen appears, choose **Change the Firewall port settings to enable network connection and continue with the installation. (Recommended)** and click **Next**.



If you are not using the Windows® Firewall, see the *User's Guide* for your software for information on how to add the following network ports.

- For network scanning, add UDP port 54925.
- If you still have trouble with your network connection, add UDP port 137.

- i** If the machine is configured for your network, choose the machine from the list, and then click **Next**.



## Note

- You can find your machine's IP address and the node name by printing out the **Network Configuration List**. See **Print the Network Configuration List on page 26**.
- If your machine is not found over the network, following screen will appear.



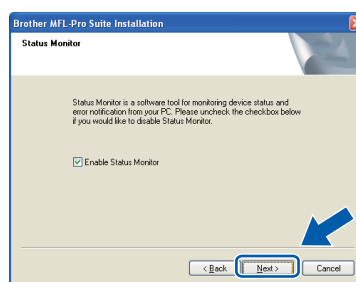
Confirm your network setting by following the on-screen instructions.

- If the machine is not yet configured for use on your network, the following screen appears.



Click **OK** and then **Configure IP Address**. Enter an IP address for your machine that is suitable for your network by following the on-screen instructions.

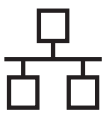
- j** If you do not want to monitor the machine status and error notifications from your computer, uncheck **Enable Status Monitor** and then click **Next**.



- k** The installation of the Brother drivers will automatically start. The installation screens appear one after another.

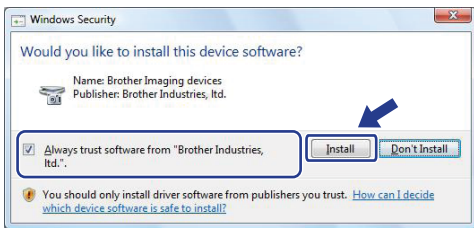
## ! IMPORTANT

**DO NOT** cancel any of the screens during the installation. It may take a few seconds for all screens to appear.

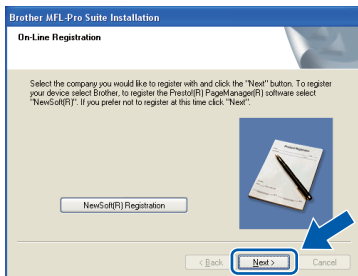


## Note

For Windows Vista®, when this screen appears, click the check box and click **Install** to complete the installation correctly.



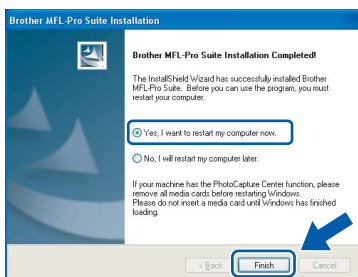
When the **On-Line Registration** screen is displayed, make your selection and follow the on-screen instructions. Once you have completed the registration process, close your web browser to return to this window. Then click **Next**.



## 15

### Finish and restart

- a** Click **Finish** to restart your computer. After restarting the computer, you must be logged on with Administrator rights.

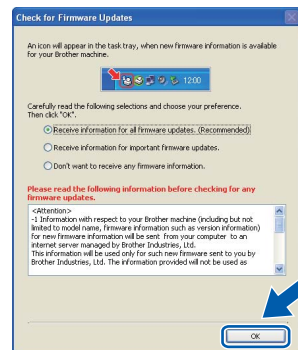


## Note

If an error message appears during the software installation, run the **Installation Diagnostics** located in **start/All Programs/Brother/DCP-XXXX LAN** (where DCP-XXXX is your model name).

## b

If this screen appears, choose the firmware update setting and click **OK**.



## Note

Internet access is required for the firmware upgrade.

## 16

### Install MFL-Pro Suite on additional computers (if needed)

If you want to use your machine with multiple computers on the network, install MFL-Pro Suite on each computer. Go to step **14** on page 13.

## Finish

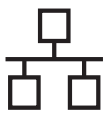
The installation is now complete.



## Note

### XML Paper Specification Printer Driver

The XML Paper Specification Printer Driver is the most suitable driver when printing from the applications that use the XML Paper Specification documents. Please download the latest driver by accessing the Brother Solutions Center at <http://solutions.brother.com/>.



## For Wired Network Interface Users (Mac OS X 10.3.9 or greater)


### 11 Before you install

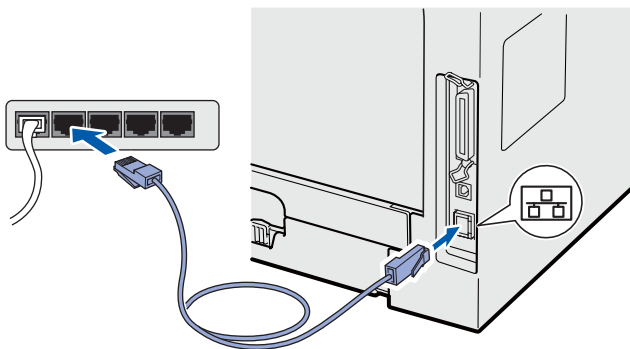
- a** Make sure your machine is connected to the power and your Macintosh is ON. You must be logged on with Administrator rights.

#### ! IMPORTANT

Make sure a USB Flash memory device is not inserted into the machine.

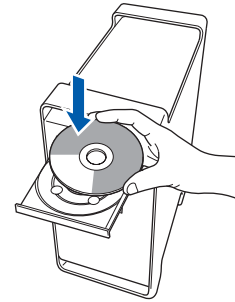
### 12 Connect the network cable

- a** Connect the network interface cable to the LAN connector marked with a  symbol and then connect it to a free port on your hub.

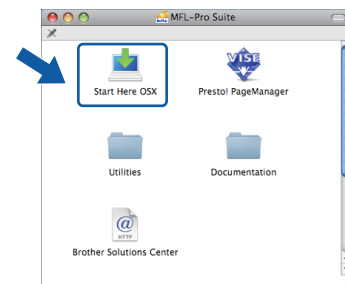


### 13 Install MFL-Pro Suite

- a** Put the supplied CD-ROM into your CD-ROM drive.



- b** Double-click **Start Here OSX** to install.



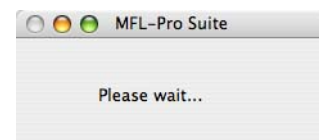
Please wait, it will take a few seconds for the software to install. After the installation, click **Restart** to finish installing the software.

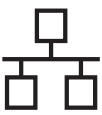


#### Note

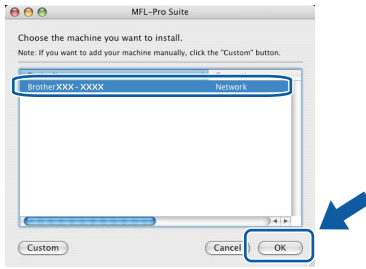
Please see the Network User's Guide on the CD-ROM if you want to install the PS driver. (Brother's BR-Script Driver)

- c** The Brother software will search for the Brother device. During this time the following screen will appear.



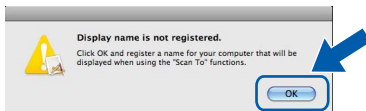


- d** If the machine is configured for your network, choose the machine from the list, and then click **OK**.

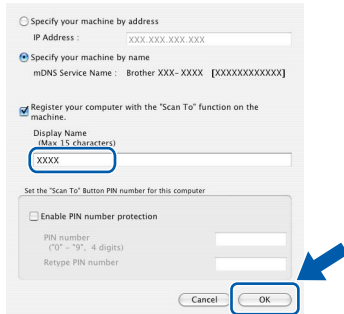



## Note

- You can find your machine's IP address and the node name by printing out the *Network Configuration List*. See *Print the Network Configuration List on page 26*.
- If your machine is not found over the network, confirm your network setting.
- If this screen appears click **OK**.

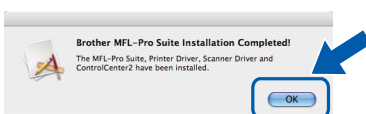


- Enter a name for your Macintosh in **Display Name** up to 15 characters long and click **OK**. Go to **e**.



- If you want to use the machine's **Scan** key to scan over the network, you must check the **Register your computer with the "Scan To" function on the machine** box.
- The name you enter will appear on the machine's LCD when you press  and choose a scan option (for more information, see *Network Scanning in the Software User's Guide on the CD-ROM*.)

- e** When this screen appears, click **OK**.

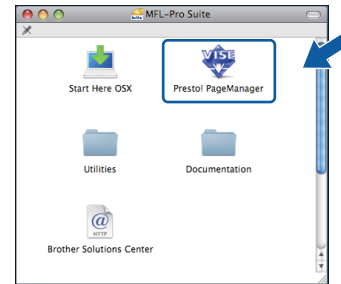


The installation of MFL-Pro Suite is now complete.  
Go to step **14** on page 23.

## 14 Install Presto! PageManager

When Presto! PageManager is installed OCR capability is added to Brother ControlCenter2. You can easily scan, share and organize photos and documents using Presto! PageManager.

- a** Double-click **Presto! PageManager** and follow the on-screen instructions.



## 15 Install MFL-Pro Suite on additional computers (if needed)

If you want to use your machine with multiple computers on the network, install MFL-Pro Suite on each computer. Go to step **13** on page 22.

**Finish**

The installation is now complete.



## BRAdmin Light utility (for Windows® users)

BRAdmin Light is a utility for initial setup of Brother network connected devices. It also can search for Brother products on your network, view the status and configure basic network settings, such as IP address. For more information on BRAdmin Light, visit us at <http://solutions.brother.com/>.

### Note

If you require more advanced printer management, use the latest Brother BRAdmin Professional utility version that is available as a download from <http://solutions.brother.com/>.

## Install the BRAdmin Light configuration utility

- a** Click **Network Utilities** on the menu screen.



- b** Click **BRAdmin Light** and follow the on-screen instructions.

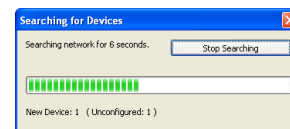


## Set your IP address, Subnet Mask and Gateway using BRAdmin Light

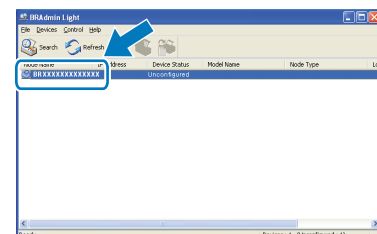
### Note

If you have a DHCP/BOOTP/RARP server in your network, you do not have to do the following operation. The machine will automatically obtain its own IP address.

- a** Start BRAdmin Light. It will search for new devices automatically.



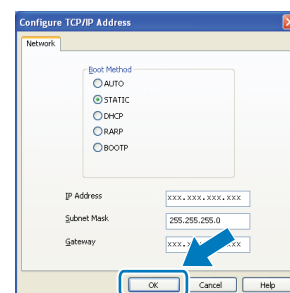
- b** Double-click the unconfigured device.



### Note

The default password for the machine is 'access'. You can use BRAdmin Light to change this password.

- c** Choose **STATIC** for the **Boot Method**. Enter the **IP Address**, **Subnet Mask** and **Gateway**, and then click **OK**.



- d** The address information will be saved to the machine.



## BRAdmin Light utility (for Mac OS X users)

BRAdmin Light is a utility for initial setup of Brother network connected devices. It also can search for Brother products on your network, view the status and configure basic network settings, such as IP address from a computer running Mac OS X 10.3.9 or greater.

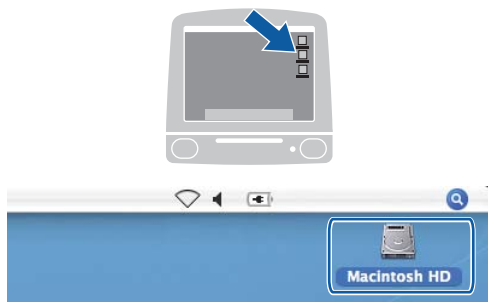
The BRAdmin Light software will be installed automatically when you install the printer driver. If you have already installed the printer driver, you do not have to install BRAdmin Light again. For more information on BRAdmin Light, visit us at <http://solutions.brother.com/>.

### Set your IP address, Subnet Mask and Gateway using BRAdmin Light

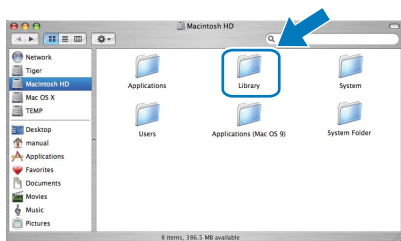
#### Note

- If you have a DHCP/BOOTP/RARP server in your network, you do not have to do the following operation. The machine will automatically obtain its own IP address.
- Make sure that version 1.4.2 or greater of Java client software is installed on your computer.
- The default password for the machine is 'access'. You can use BRAdmin Light to change this password.

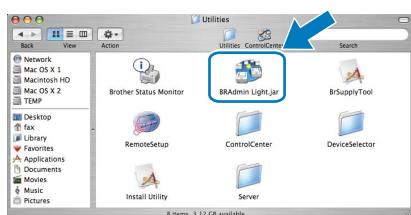
- a** Double-click **Macintosh HD** on your desktop.



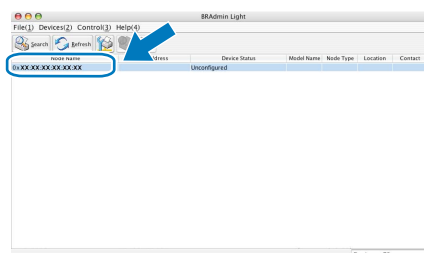
- b** Choose **Library**, **Printers**, **Brother** and then **Utilities**.



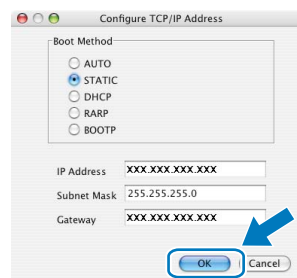
- c** Double-click the file **BRAdmin Light.jar** and run the software. BRAdmin Light will then search for new devices automatically.



- d** Double-click the unconfigured device.



- e** Choose **STATIC** for **Boot Method**. Enter the **IP Address**, **Subnet Mask** and **Gateway**, and then click **OK**.



- f** The address information will be saved to the machine.

## Web Based Management (web browser)

The Brother print server is equipped with a web server that allows you to monitor its status or change some of its configuration settings, using HTTP (Hyper Text Transfer Protocol).



### Note

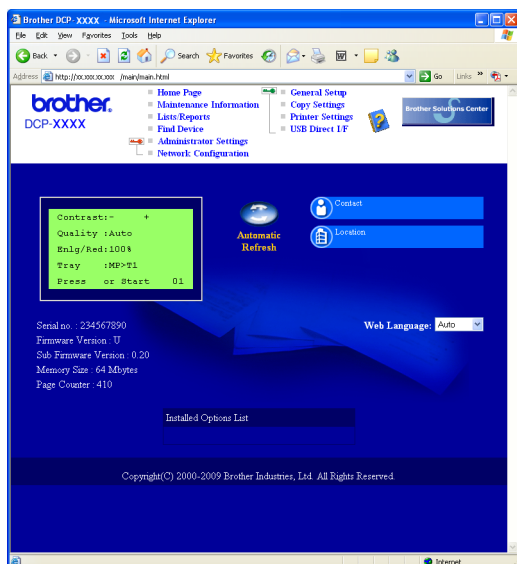
- The User Name is '**admin**' and the default password is '**access**'. You can use a web browser to change this password.
- We recommend Microsoft® Internet Explorer 6.0® (or higher) or Firefox 1.0 (or higher) for Windows® and Safari 1.3 for Macintosh. Please also make sure that JavaScript and cookies are always enabled in whichever browser you use. To use a web browser, you will need to know the IP address of the print server. The IP address of the print server is listed on the Network Configuration List.

**a** Open your browser.

**b** Type `http:// printer_ip_address /` into your browser (Where "printer\_ip\_address" is the IP address of the printer or the print server name).

You can find the IP address of the machine on the Network Configuration List. See *Print the Network Configuration List* on page 26.

■ For example `http://192.168.1.2/`



See Chapter 11 of the Network User's Guide.

## Print the Network Configuration List

You can print the Network Configuration List to confirm the current network settings. To print the Network Configuration List:

- a** Make sure that the front cover is closed and the AC power cord is plugged in.
- b** Turn on the machine and wait until the machine is in the Ready state.
- c** Press **Menu**, **6**, **5**.
- d** Press **Start**.  
The machine will print the current network settings.

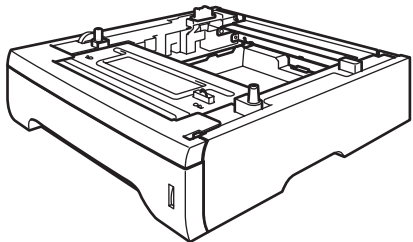
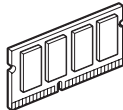
## Restore the network settings to factory default

To restore all network settings of the internal Print/Scan server to factory default, please follow the steps below.

- a** Make sure the machine is not operating, then disconnect all the cables from the machine (except the power cord).
- b** Press **Menu**, **5**, **0**.
- c** Press **1** to choose **Reset**.
- d** Press **1** to choose **Yes**.
- e** The machine will restart, re-connect cables once this is complete.

# Options and Consumables

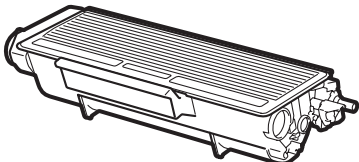
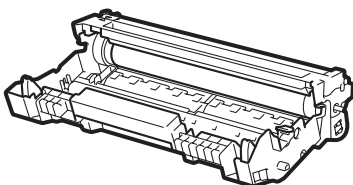
## Options

Lower Tray Unit	SO-DIMM Memory
LT-5300	
	
Second lower paper tray unit can hold up to 250 sheets of paper. When the tray is installed, the machine expands total input capacity up to 550 sheets.	You can expand the memory by installing a (144-pin SO-DIMM) memory module.

For more details about the optional Lower Tray Unit and compatible SO-DIMM Memory please see the *User's Guide* or visit <http://solutions.brother.com/>.

## Replacement consumables

When the time comes to replace consumable items, an error message will be indicated on the LCD. For more information about the consumables for your machine, visit <http://www.brother.com/original/> or contact your local Brother re-seller.

Toner cartridge	Drum unit
TN-3235/TN-3285	DR-3250
	

## **Trademarks**

The Brother logo is a registered trademark of Brother Industries, Ltd.

Brother is a registered trademark of Brother Industries, Ltd.

Multi-Function Link is a registered trademark of Brother International Corporation.

Windows Vista is either a registered trademark or a trademark of Microsoft Corporation in the United States and other countries.

Microsoft, Windows and Windows Server and Internet Explorer are registered trademarks of Microsoft Corporation in the United States and/or other countries.

Apple, Macintosh, Safari and TrueType are trademarks of Apple Inc., registered in the United States and other countries.

Each company whose software title is mentioned in this manual has a Software License Agreement specific to its proprietary programs.

**All other trademarks are the property of their respective owners.**

## **Compilation and Publication**

Under the supervision of Brother Industries, Ltd., this manual has been compiled and published, covering the latest product descriptions and specifications.

The contents of this manual and the specifications of this product are subject to change without notice.

Brother reserves the right to make changes without notice in the specifications and materials contained herein and shall not be responsible for any damages (including consequential) caused by reliance on the materials presented, including but not limited to typographical and other errors relating to the publication.

## **Copyright and License**

©2009 Brother Industries, Ltd.

This product includes software developed by the following vendors:

©1983-1998 PACIFIC SOFTWARES, INC.

This product includes the "KASAGO TCP/IP" software developed by ELMIC WESCOM, Inc.

©2009 Devicescape Software, Inc.