

For Windows® 7 Users

Before using the machine

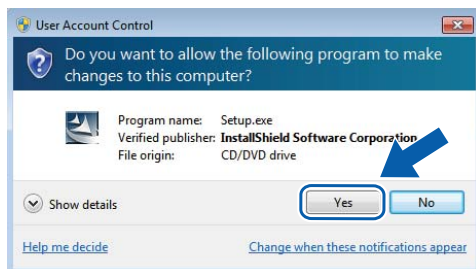
Insert the supplied CD-ROM for Windows® 7. For setting up the machine and installing the printer driver, follow the steps in the Quick Setup Guide along with the information on this sheet.

Instructions for installation

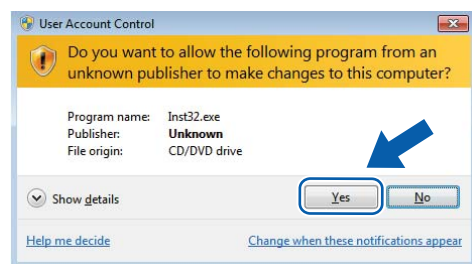
If the **User Account Control** dialog box appears on your computer during installation of the printer driver or BRAdmin Light for Windows®, click **Yes**. Then, proceed to the next step in the Quick Setup Guide.

Printer Driver installation

- For USB, parallel and wired network interface cable users:



- For wireless network users:

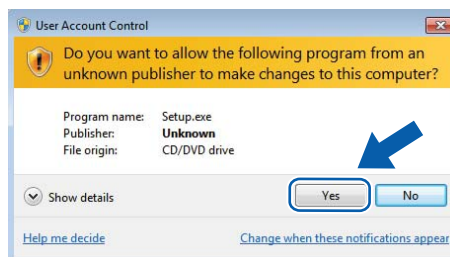


Computer requirements

Computer Platform & Operating System Version ¹	Processor Minimum Speed	Minimum RAM	Recommended RAM	Available Hard Disk Space
Windows® 7	Intel® Pentium® 4 or equivalent 64-bit (Intel® 64 or AMD64) supported CPU	1GB (32-bit) 2GB (64-bit)	1GB (32-bit) 2GB (64-bit)	50MB


¹ Microsoft® Internet Explorer® 5.5 or greater.



BRAdmin Light for Windows® installation

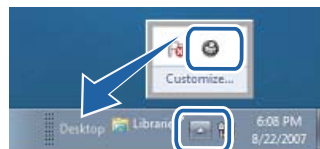


About Status Monitor

Status Monitor display

If you have set the **Status Monitor** as an **Indicator on Taskbar**, you may find the  button on the taskbar.

To show the **Status Monitor** icon on your taskbar, click the  button. The **Status Monitor** icon will appear in the small window. Then drag the  icon to the taskbar.



Factory Setting on HL-2035

The User's Guide states that the factory setting for the **Status Monitor** is OFF, which is incorrect for Windows® 7 users. The factory setting for the **Status Monitor** is ON.

Note: Not all models are available in all countries.