

Quick Setup Guide

Start Here

DCP-395CN

Before you can use the machine, please read this Quick Setup Guide for the correct setup and installation.

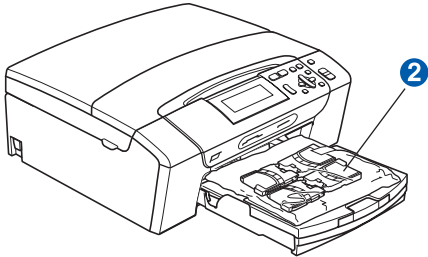
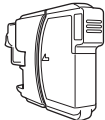
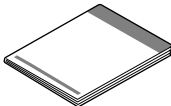
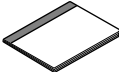






! WARNING	Warnings tell you what to do to prevent possible personal injury.
! CAUTION	Cautions specify procedures you must follow or avoid to prevent possible minor injuries.

! IMPORTANT

DO NOT connect the USB cable yet (if you are using a USB cable).



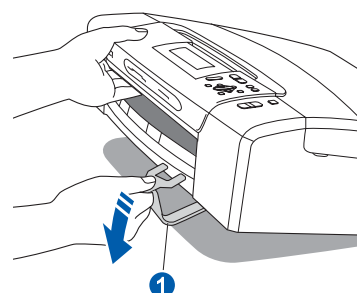
1 Unpack the machine and check the components

		 <p>Inbox Ink Cartridges [x4]</p> <p>Black Yellow Cyan Magenta (Approx. 65% yield of the replacement cartridge) For details, see <i>Consumable items</i> in the <i>User's Guide</i>.</p>		 <p>Quick Setup Guide</p>
 <p>User's Guide</p>	 <p>CD-ROM</p>	 <p>USB Interface Cable</p>		
 <p>Power Cord</p>		 <p>Australia & New Zealand</p>	 <p>Hong Kong, Malaysia & Singapore</p>	 <p>Philippines & Thailand</p>
		The supplied mains plug is a grounded three pin plug.		The supplied mains plug is a side grounded two pin plug.
Make sure that the AC socket will accept the supplied grounded pin plug. This machine must be grounded, If in doubt, call a qualified electrician.				

! WARNING

Plastic bags are used in the packaging of your machine. To avoid danger of suffocation, please keep these bags away from babies and children.

- a** Remove the protective tape and film covering the machine.
- b** Remove the green protective part ❶ by lifting the front of the machine and then pulling down on the packing part.
- c** Remove the plastic bag ❷ containing the ink cartridges from on top of the paper tray.
- d** Make sure you have all components.



ARL/ASA/NZ Version 0

Note

- The components included in the box may differ depending on your country.
- Save all packing materials and the box in case for any reason you must ship your machine.
- For a network connection you will need to purchase a network interface cable. Please use the supplied USB cable for a USB connection.
- To ensure safe operation the supplied plug must be inserted only into a standard power outlet that is properly grounded through the standard electrical wiring. Non grounded equipment may cause an electrical shock hazard, and may cause excessive electrical noise radiation.

USB cable

Please make sure you use a USB 2.0 cable (Type A/B) that is no more than 2 metres long.

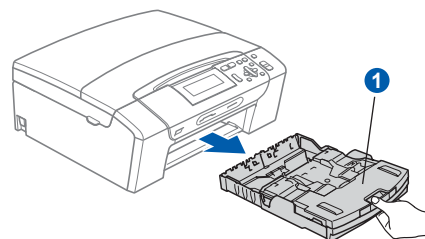
Network cable

Use a straight-through Category5 (or greater) twisted-pair cable for 10BASE-T or 100BASE-TX Fast Ethernet Network.

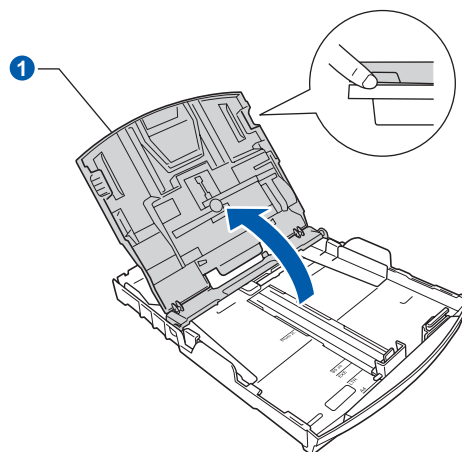
2

Load plain A4 paper

- a** Pull the paper tray ① completely out of the machine.

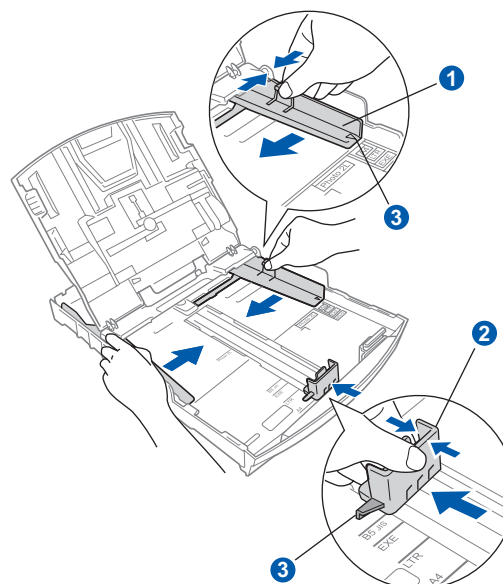


- b** Lift the output paper tray cover ①.



- c** With both hands, gently press and slide the paper side guides ① and then the paper length guide ② to fit the paper size you are loading in the tray.

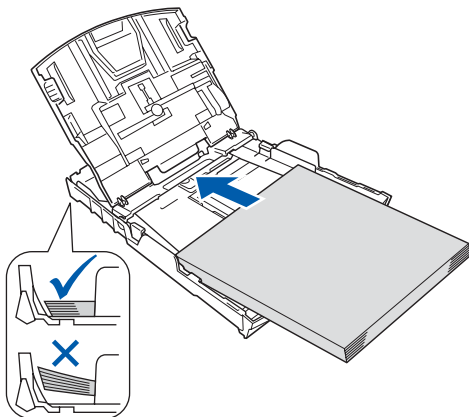
Make sure that the triangular marks ③ on the paper side guides ① and paper length guide ② line up with the mark for the paper size you are using.



- d** Fan the stack of paper well to avoid paper jams and misfeeds.
- e** Gently put the paper into the paper tray print side down and top edge first. Check that the paper is flat in the tray.

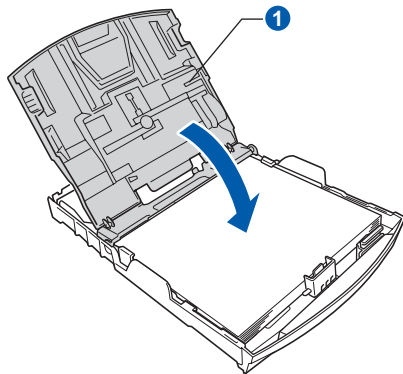
! IMPORTANT

DO NOT push the paper in too far.

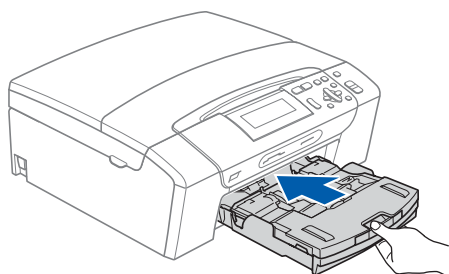


- f** Gently adjust the paper side guides to the paper with both hands. Make sure that the paper side guides touch the edges of the paper.

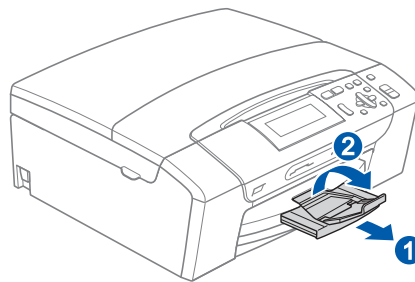
- g** Close the output paper tray cover **1**.



- h** *Slowly* push the paper tray completely into the machine.



- i** While holding the paper tray in place, pull out the paper support **1** until it clicks, and then unfold the paper support flap **2**.



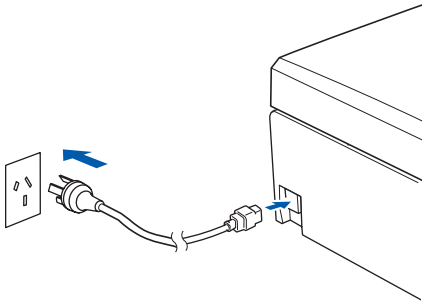
3

Connect the power cord

! IMPORTANT

DO NOT connect the USB cable yet (if you are using a USB cable).

- a** Connect the power cord.



! WARNING

The machine must be fitted with an earthed plug.



Note

The Warning LED on the control panel will stay on until you have installed the ink cartridges.

4

Choose your language (not available for Hong Kong/Taiwan users)

- a** Press ▲ or ▼ to choose your language and press **OK**.

- b** Press ▲ or ▼ to choose **Yes** or **No** and press **OK**.



If you set the wrong language, you can change the language after setting the date and time. (For details, see Changing LCD language in Chapter 3 of the User's Guide.)

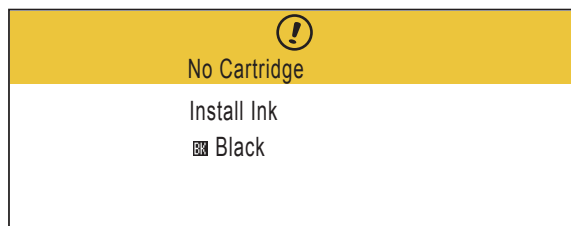
5

Install the ink cartridges

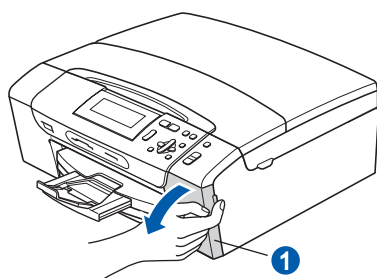
CAUTION

If ink gets in your eyes, wash them out with water at once, and if irritation occurs consult a doctor.

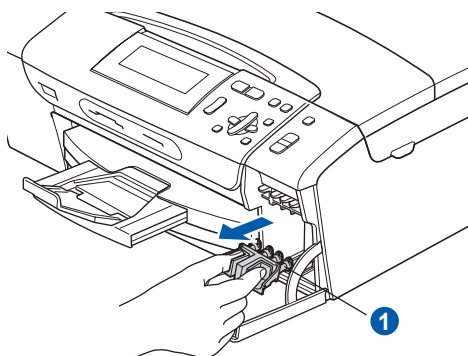
- a** Make sure that the power is turned on. The LCD shows:



- b** Open the ink cartridge cover **1**.



- c** Remove the green protective part **1**.

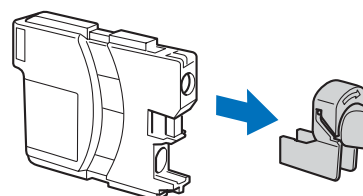
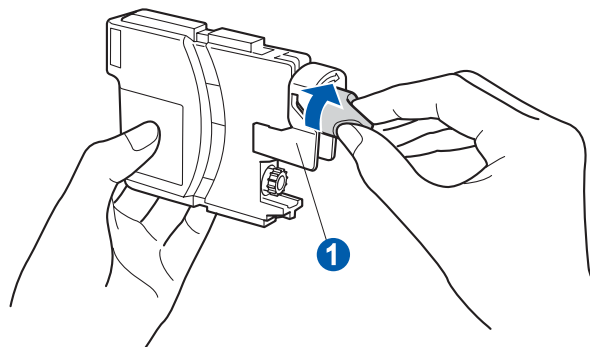
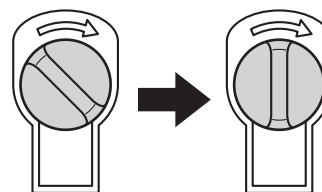


Note

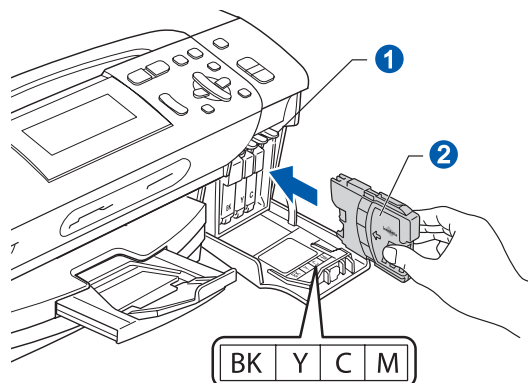
Do not throw away the green protective part. You will need it if you transport the machine.

- d** Unpack the ink cartridge.

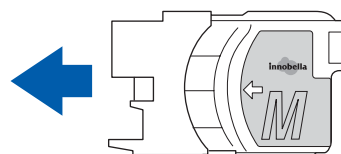
- e** Turn the green knob on the protective yellow cap clockwise until it clicks to release the vacuum seal, then remove the cap **1**.



- f** Take care to match the colour of the lever **1** with the cartridge colour **2**, as shown in the diagram below.

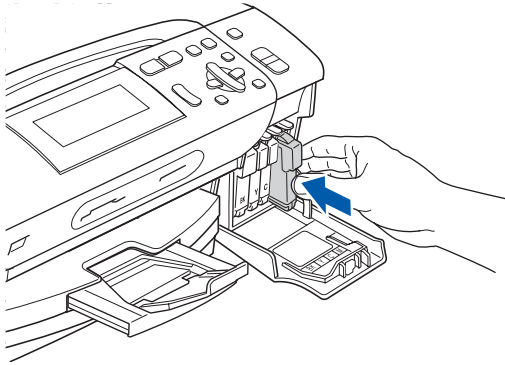


- g** Install each ink cartridge in the direction of the arrow on the label.



h

Gently push the ink cartridge until it clicks. After all the ink cartridges are installed close the ink cartridge cover.

**! IMPORTANT**

After initial installation of the ink cartridges, the machine will start cleaning the ink tube system. This cleaning process will last approximately four minutes.

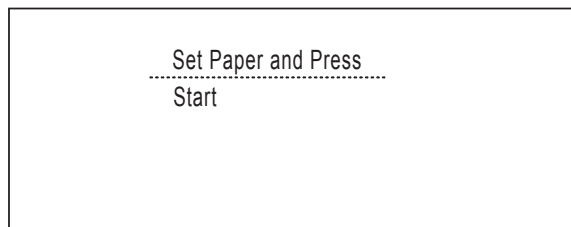
DO NOT unplug the machine from the power outlet or attempt to stop the cleaning process. Interruption of cleaning process may cause undesired print quality problems.

! IMPORTANT

- **DO NOT** take out ink cartridges if you do not need to replace them. If you do so, it may reduce the ink quantity and the machine will not know the quantity of ink left in the cartridge.
- **DO NOT** shake the ink cartridges. If ink stains your skin or clothing, wash with soap or detergent at once.
- **DO NOT** repeatedly insert and remove the cartridges. If you do so, ink may seep out of the cartridge.
- If you mix the colours by installing an ink cartridge in the wrong position, clean the print head several times after correcting the cartridge installation. (See *Cleaning the print head in Appendixes B of the User's Guide.*)
- Once you open an ink cartridge, install it in the machine and use it up within six months of installation. Use unopened ink cartridges by the expiration date written on the cartridge package.
- **DO NOT** dismantle or tamper with the ink cartridge, this can cause the ink to leak out of the cartridge.
- Brother multifunction machines are designed to work with ink of a particular specification and will work to a level of optimum performance when used with genuine Brother branded ink cartridges. Brother cannot guarantee this optimum performance if ink or ink cartridges of other specifications are used. Brother does not therefore recommend the use of cartridges other than genuine Brother branded cartridges with this machine or the refilling of empty cartridges with ink from other sources. If damage is caused to the print head or other parts of this machine as a result of using incompatible products with this machine, any repairs required as a result may not be covered by the warranty.

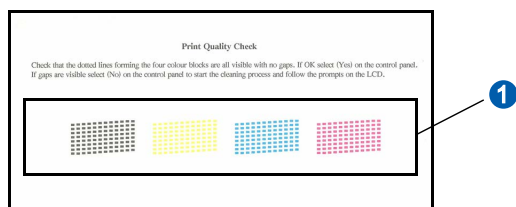
6 Check the print quality

- a** When the preparation process has finished, the LCD shows this message:



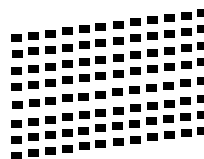
Press **Colour Start**.

- b** Check the quality of the four colour blocks **1** on the sheet. (black/yellow/cyan/magenta)



- c** If all lines are clear and visible, press **+** (Yes) to finish the quality check and go to step **7**.

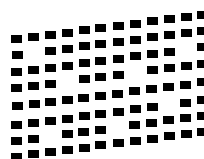
OK



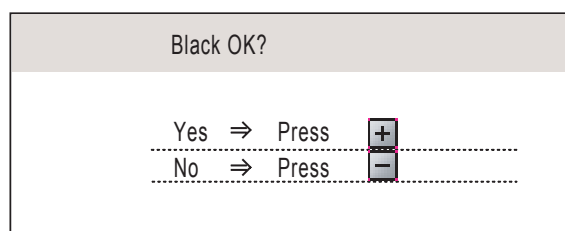
If you can see missing short lines, press

- (No) and go to **d**.

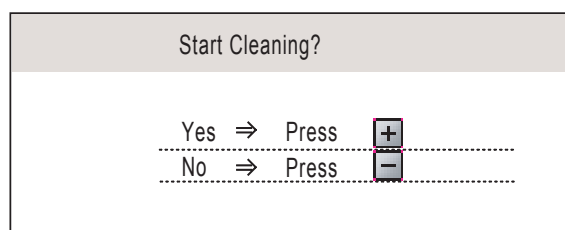
Poor



- d** The LCD asks you if the print quality is OK for black and colour. Press **+** (Yes) or **-** (No).



After pressing **+** (Yes) or **-** (No) for both black and colour, the LCD shows:



- e** Press **+** (Yes), the machine will then start cleaning the colours.

- f** After cleaning is finished, press **Colour Start**. The machine starts printing the Print Quality Check Sheet again. Go back to **b**.

7 Set the LCD contrast (if needed)

If you are having difficulty reading the LCD, try changing the contrast setting.

- a** Press **Menu**.
- b** Press **▲** or **▼** to choose **General Setup**. Press **OK**.
- c** Press **▲** or **▼** to choose **LCD Settings**. Press **OK**.
- d** Press **▲** or **▼** to choose **LCD Contrast**.
- e** Press **◀** or **▶** to choose **Light, Med or Dark**. Press **OK**.
- f** Press **Stop/Exit**.



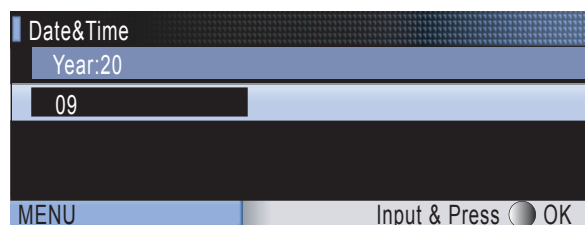
Note

You can also adjust the angle of the display by lifting it.

8 Set the date and time

Setting the date and time allows the machine to clean the print head regularly and maintain optimum print quality. It also allows the machine to name files created when using the Scan to Media feature.

- a** Press **Menu**.
- b** Press **▲** or **▼** to choose **Initial Setup**. Press **OK**.
- c** Press **▲** or **▼** to choose **Date&Time**. Press **OK**.
- d** Press **▲** or **▼** repeatedly to enter the last two digits of the year, and then press **OK**.

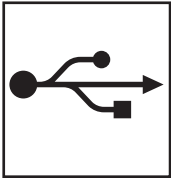
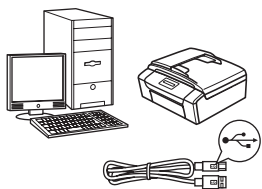


(e.g. Enter 0 9 for 2009.)

- e** Repeat for Month and Day, and Hours and Minutes in 24-hour format.
- f** Press **Stop/Exit**.

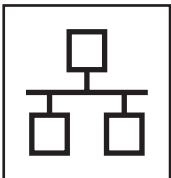
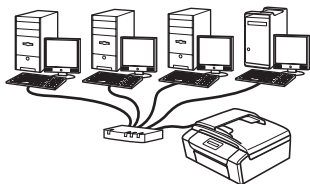
9

Choose your connection type



For USB interface cable

Windows[®], go to page 10
Macintosh, go to page 14



For Wired Network

Windows[®], go to page 16
Macintosh, go to page 21

Note

For Windows Server[®] 2003/ 2008, see the Network User's Guide on the CD-ROM.

USB	Windows [®]
	Macintosh
Wired Network	Windows [®]
	Macintosh



For USB interface users

(Windows® 2000 Professional/XP/XP Professional x64 Edition/
Windows Vista®)

10

Before you install

- a** Make sure that your computer is ON and you are logged on with Administrator rights.

! IMPORTANT

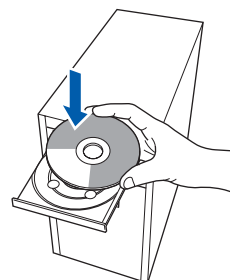
- **DO NOT** connect the USB cable yet.
- If there are any programs running, close them.
- Make sure there are no memory cards or a USB Flash memory drive inserted into the machine.
- The screens may differ depending on your operating system.
- The supplied CD-ROM includes ScanSoft™ PaperPort™ 11SE*. This software supports Windows® 2000 (SP4 or greater), XP (SP2 or greater), XP Professional x64 Edition and Windows Vista®. Update to the latest Windows® Service Pack before installing MFL-Pro Suite.

* For Hong Kong/Taiwan users, CD-ROM includes Presto! PageManager instead of ScanSoft™ PaperPort™ 11SE.

11

Install MFL-Pro Suite

- a** Put the supplied CD-ROM into your CD-ROM drive. If the model name screen appears, choose your machine. If the language screen appears, choose your language.

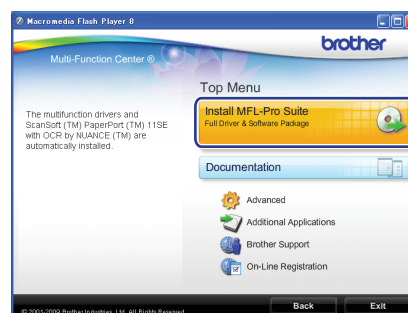


Note

*If the Brother screen does not appear automatically, go to **My Computer (Computer)**, double-click the CD-ROM icon, and then double-click **start.exe**.*

b

The CD-ROM Top Menu will appear. Click **Install MFL-Pro Suite**.





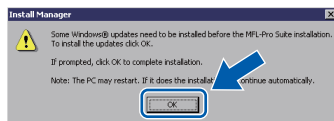
USB

Windows®

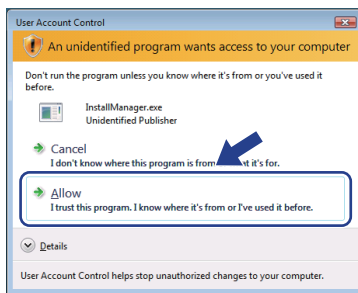


Note

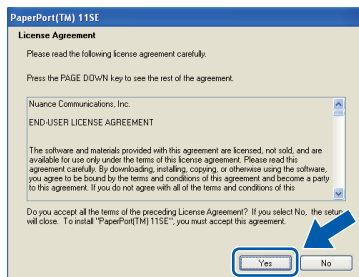
- If this screen appears, click **OK** and restart your computer.



- If the installation does not continue automatically, open the top menu again by ejecting and then reinserting the CD-ROM or double-click the **start.exe** program from the root folder, and continue from **b** to install MFL-Pro Suite.
- For Windows Vista®, when the **User Account Control** screen appears, click **Allow**.

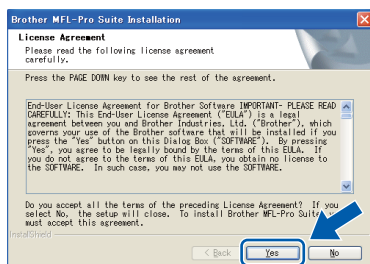


- c** When the ScanSoft™ PaperPort™ 11SE **License Agreement** window appears, click **Yes** if you agree to the Software **License Agreement**.



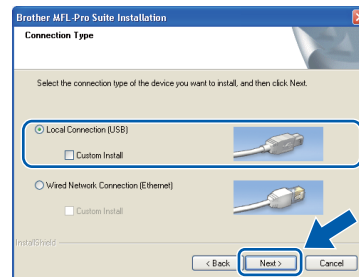
- d** The installation of ScanSoft™ PaperPort™ 11SE will automatically start and is followed by the installation of MFL-Pro Suite.

- e** When the Brother MFL-Pro Suite Software **License Agreement** window appears, click **Yes** if you agree to the Software **License Agreement**.



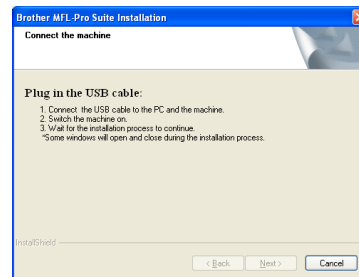
f

Choose **Local Connection**, and then click **Next**. The installation continues.



g

When this screen appears, go to the next step.



Windows®
USB
Macintosh



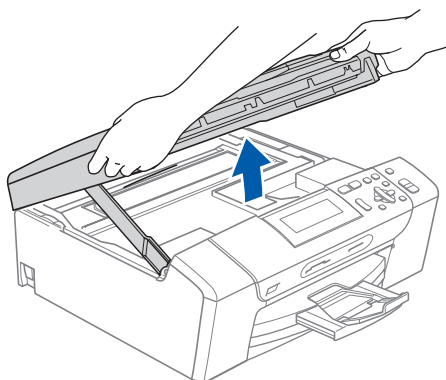
12


Connect the USB cable

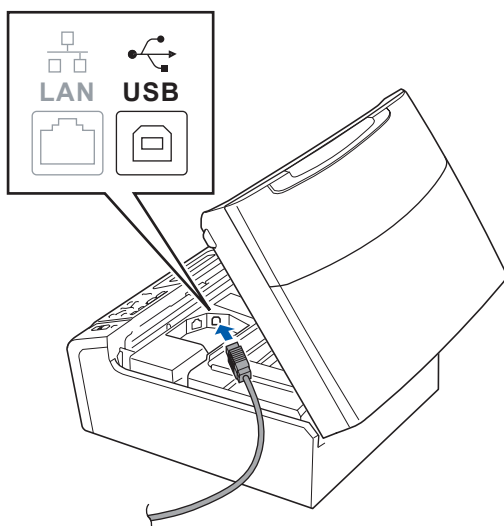
! IMPORTANT

- **DO NOT** connect the machine to a USB port on a keyboard or a non-powered USB hub. Connect the machine directly to your computer.

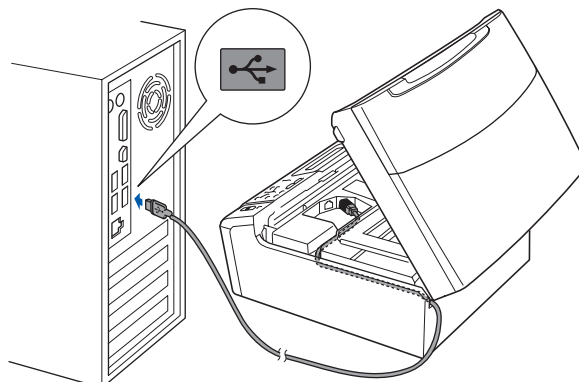
- a** Using both hands, use the plastic tabs on both sides of the machine to lift the scanner cover until it locks securely into the open position.



- b** Connect the USB cable to the USB socket marked with a  symbol. You will find the USB socket inside the machine on the right as shown below.



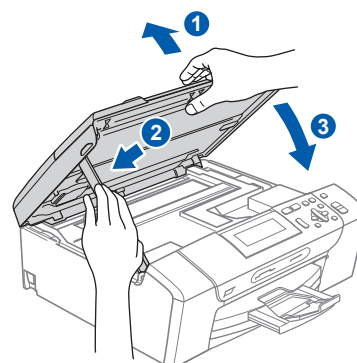
- c** Carefully guide the USB cable through the trench as shown below, following the trench around and toward the back of the machine. Then connect the cable to your computer.



! IMPORTANT

Make sure that the cable does not restrict the cover from closing, or an error may occur.

- d** Lift the scanner cover to release the lock **1**. Gently push the scanner cover support down **2** and close the scanner cover **3**.

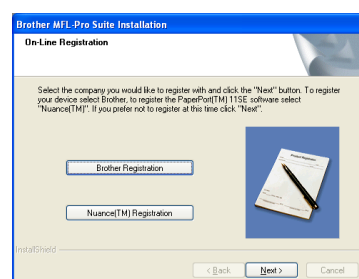


- e** The installation will continue automatically. The installation screens appear one after another.

! IMPORTANT

DO NOT cancel any of the screens during the installation. It may take a few seconds for all screens to appear.

- f** When the **On-Line Registration** screen is displayed, make your selection and follow the on-screen instructions.





13

Finish and restart

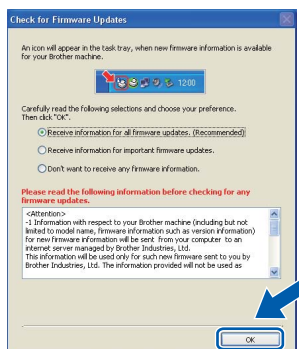
- a** Click **Finish** to restart your computer. After restarting the computer, you must be logged on with Administrator rights.



Note

If an error message appears during the software installation, run the **Installation Diagnostics** located in **Start/All Programs/Brother/DCP-XXXX** (where DCP-XXXX is your model name).

- b** Choose the firmware update setting and click **OK**.



Note

Internet access is required for the firmware update.

Finish

The installation is now complete.

Now go to

Proceed to Install Optional Applications on page 24.



Note

XML Paper Specification Printer Driver

The XML Paper Specification Printer Driver is the most suitable driver when printing from applications that use the XML Paper Specification documents. Please download the latest driver by accessing the Brother Solutions Center at <http://solutions.brother.com/>.



For USB interface users (Mac OS X 10.3.9 - 10.4.x - 10.5.x)

10

Before you install

- a** Make sure your machine is connected to the power and your Macintosh is ON. You must be logged on with Administrator rights.

! IMPORTANT

- For the latest drivers and information on the Mac OS X you are using, visit <http://solutions.brother.com/>.
- For Mac OS X 10.3.0 to 10.3.8 users, upgrade to Mac OS X 10.3.9 - 10.5.x.
- Make sure there are no memory cards or a USB Flash memory drive inserted into the machine.

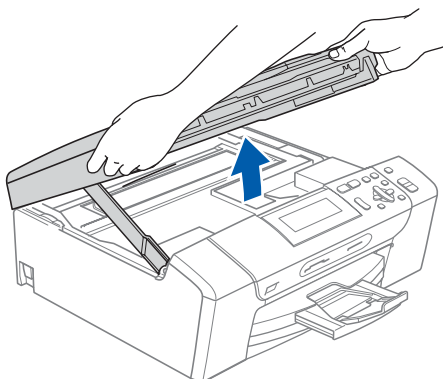
11

Connect the USB cable


! IMPORTANT

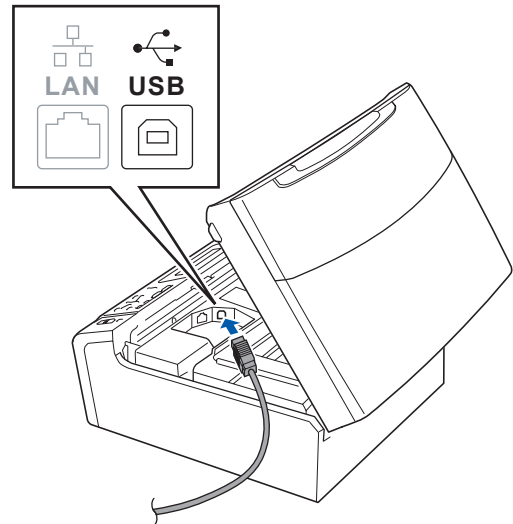
- DO NOT connect the machine to a USB port on a keyboard or a non-powered USB hub. Connect the machine directly to your Macintosh.

- a** Using both hands, use the plastic tabs on both sides of the machine to lift the scanner cover until it locks securely into the open position.



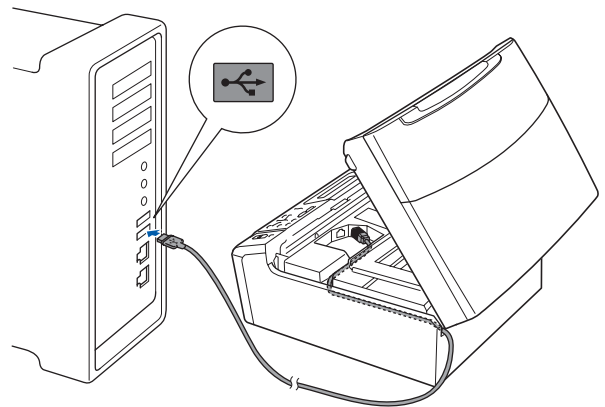
b

Connect the USB cable to the USB socket marked with a  symbol. You will find the USB socket inside the machine on the right as shown below.



c

Carefully guide the USB cable through the trench as shown below, following the trench around and toward the back of the machine. Then connect the cable to your Macintosh.

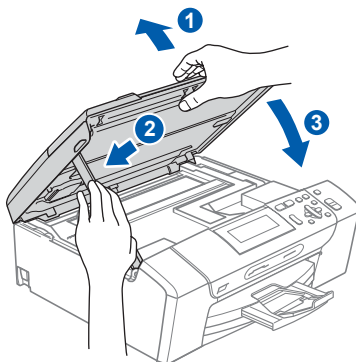


! IMPORTANT

Make sure that the cable does not restrict the cover from closing, or an error may occur.

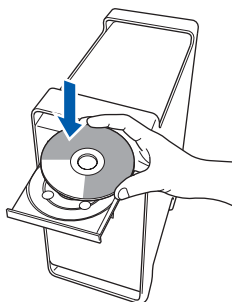


- d** Lift the scanner cover to release the lock ①. Gently push the scanner cover support down ② and close the scanner cover ③.

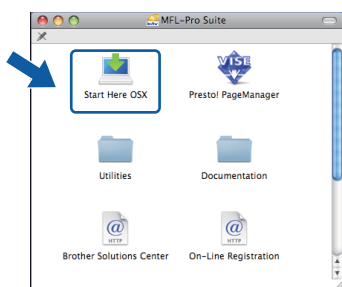


12 Install MFL-Pro Suite

- a** Put the supplied CD-ROM into your CD-ROM drive.



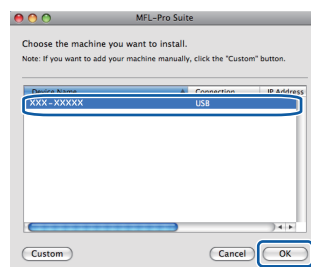
- b** Double-click the **Start Here OSX** icon to install.



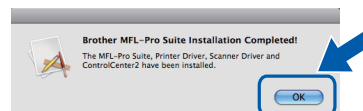
- c** Please wait, it will take a few seconds for the software to install. After the installation, click **Restart** to finish installing the software.

- d** The Brother software will search for the Brother device.

- e** Choose the machine from the list, and then click **OK**.



- f** When this screen appears, click **OK**.



- OK!** The installation of MFL-Pro Suite is now complete.
Go to step **13** on page 15.

13 Install Presto! PageManager

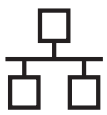
When Presto! PageManager is installed OCR capability is added to Brother ControlCenter2. You can easily scan, share and organize photos and documents using Presto! PageManager.

- a** Double-click the **Presto! PageManager** icon and follow the on-screen instructions.



Finish

The installation is now complete.



**For wired network interface users
(Windows® 2000 Professional/XP/XP Professional x64 Edition/
Windows Vista®)**

10

Before you install

- a** Make sure that your computer is ON and you are logged on with Administrator rights.

! IMPORTANT

- If there are any programs running, close them.
- Make sure there are no memory cards or a USB Flash memory drive inserted into the machine.
- The screens may differ depending on your operating system.
- The supplied CD-ROM includes ScanSoft™ PaperPort™ 11SE*. This software supports Windows® 2000 (SP4 or greater), XP (SP2 or greater), XP Professional x64 Edition and Windows Vista®. Update to the latest Windows® Service Pack before installing MFL-Pro Suite.

* For Hong Kong/Taiwan users, CD-ROM includes Presto! PageManager instead of ScanSoft™ PaperPort™ 11SE.

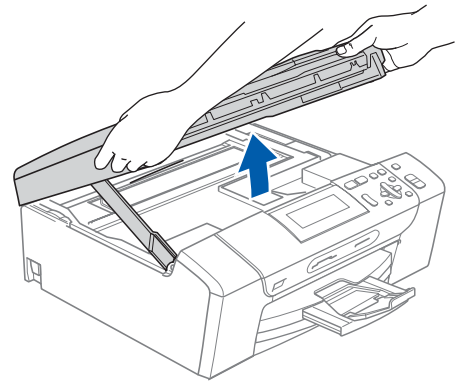
! IMPORTANT


Disable all personal firewall software (other than Windows® Firewall), anti-spyware or antivirus applications for the duration of the installation.

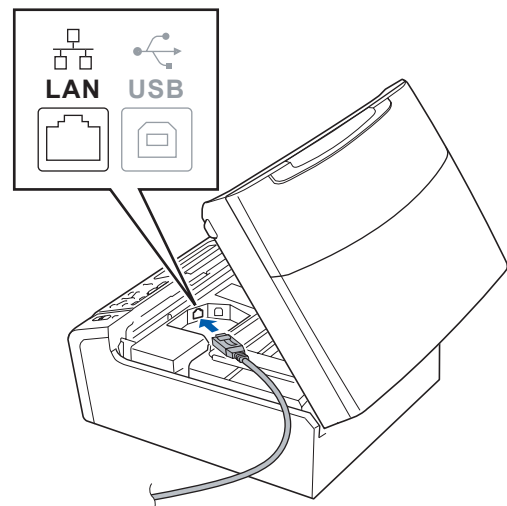
11

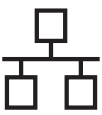
Connect the network cable

- a** Using both hands, use the plastic tabs on both sides of the machine to lift the scanner cover until it locks securely into the open position.

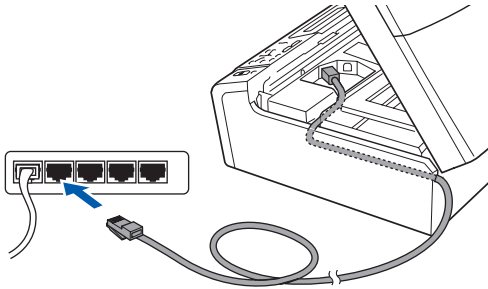


- b** Connect the network cable to the LAN socket marked with a  symbol. You will find the LAN socket inside the machine on the left as shown below.





- c** Carefully guide the network cable through the trench as shown below, following the trench around and toward the back of the machine. Then, connect the cable to your network.



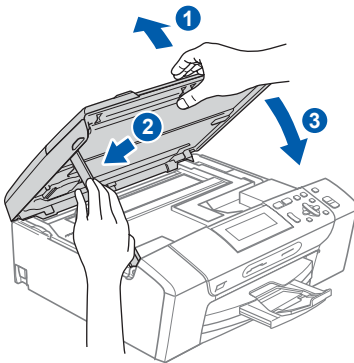
Note

If both USB and LAN cables are being used, guide both cables through the trench with one on top of the other.

! IMPORTANT

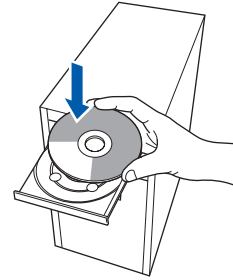
Make sure that the cable does not restrict the cover from closing, or an error may occur.

- d** Lift the scanner cover to release the lock ①. Gently push the scanner cover support down ② and close the scanner cover ③.



12 Install MFL-Pro Suite

- a** Put the supplied CD-ROM into your CD-ROM drive. If the model name screen appears, choose your machine. If the language screen appears, choose your language.

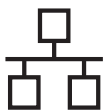


Note

If the Brother screen does not appear automatically, go to **My Computer (Computer)**, double-click the CD-ROM icon, and then double-click **start.exe**.

- b** The CD-ROM Top Menu will appear. Click **Install MFL-Pro Suite**.



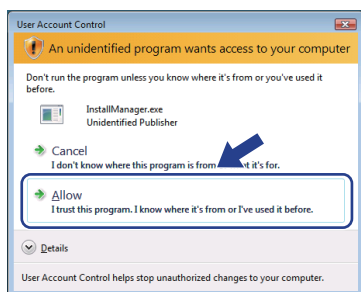


Note

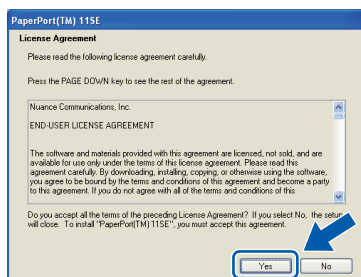
- If this screen appears, click **OK** and restart your computer.



- If the installation does not continue automatically, open the top menu again by ejecting and then reinserting the CD-ROM or double-click the **start.exe** program from the root folder, and continue from **b** to install MFL-Pro Suite.
- For Windows Vista®, when the **User Account Control** screen appears, click **Allow**.

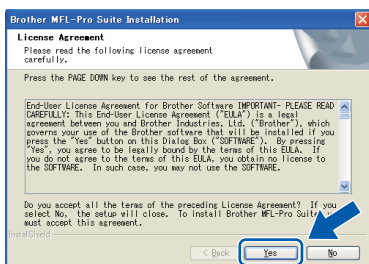


- c** When the ScanSoft™ PaperPort™ 11SE License Agreement window appears, click **Yes** if you agree to the Software License Agreement.



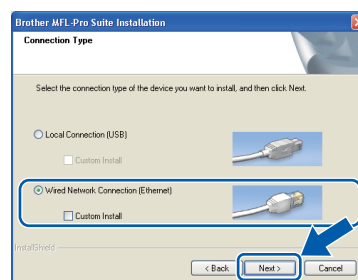
- d** The installation of ScanSoft™ PaperPort™ 11SE will automatically start and is followed by the installation of MFL-Pro Suite.

- e** When the Brother MFL-Pro Suite Software License Agreement window appears, click **Yes** if you agree to the Software License Agreement.



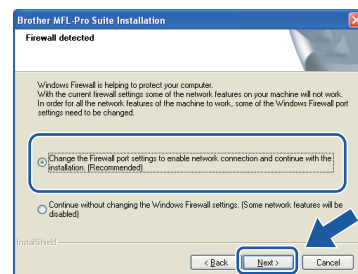
f

Choose **Wired Network Connection**, and then click **Next**.

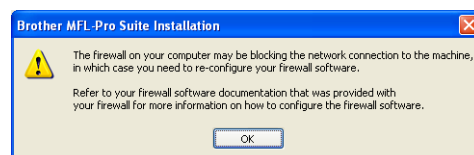


g

For Windows® XP SP2 or greater/XP Professional x64 Edition/ Windows Vista® users, when this screen appears, choose **Change the Firewall port settings to enable network connection and continue with the installation. (Recommended)** and click **Next**.

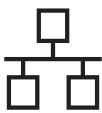


If you are using a firewall other than Windows® Firewall or Windows® Firewall is off, this screen may appear.



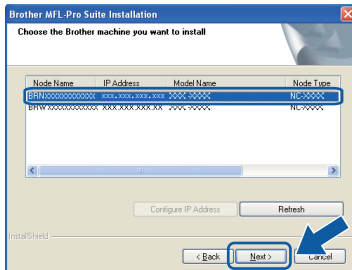
See the instructions provided with your firewall software for information on how to add the following network ports.

- For network scanning, add UDP port 54925.
- If you still have trouble with your network connection, add UDP port 137.



Note

- If there is more than one machine connected to the network, choose your machine from the list, and then click **Next**.
This window will not appear if there is only one machine connected to the network, it will be chosen automatically.



- If your machine is not found over the network, the following screen will appear.



Confirm your settings by following the on-screen instructions.

- If the IP address of the machine is not yet configured for use on your network, the following screen appears.



Click **OK** and then click **Configure IP Address**. Enter an IP address for your machine that is suitable for your network by following the on-screen instructions.

h

The installation of the Brother drivers will automatically start. The installation screens appear one after another.

! IMPORTANT

DO NOT cancel any of the screens during the installation. It may take a few seconds for all screens to appear.

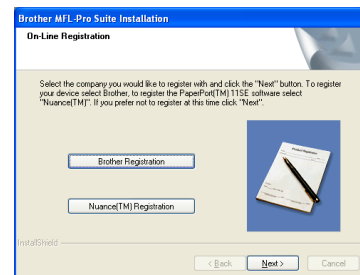
Note

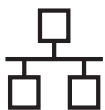
For Windows Vista®, when this screen appears, click the check box and click **Install** to complete the installation correctly.



i

When the **On-Line Registration** screen is displayed, make your selection and follow the on-screen instructions.

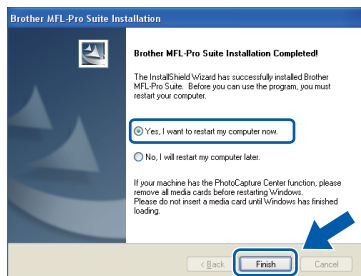




13

Finish and restart

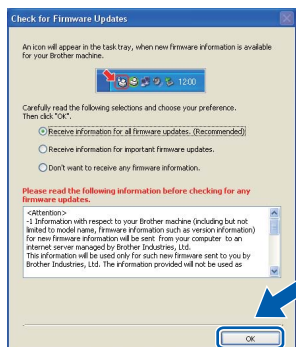
- a** Click **Finish** to restart your computer. After restarting the computer, you must be logged on with Administrator rights.



Note

If an error message appears during the software installation, run the **Installation Diagnostics** located in **Start/All Programs/Brother/DCP-XXXX** (where DCP-XXXX is your model name).

- b** Choose the firmware update setting and click **OK**.



Note

Internet access is required for the firmware update.

14

Install MFL-Pro Suite on additional computers (if needed)

If you want to use your machine with multiple computers on the network, install MFL-Pro Suite on each computer. Go to step **12** on page 17. Also see step **10-a** on page 16 before you install.

Note

Network license (Windows®)

This product includes a PC license for up to 2 Users. This license supports the installation of the MFL-Pro Suite including ScanSoft™ PaperPort™ 11SE on up to 2 PCs on the network. If you want to use more than 2 PCs with ScanSoft™ PaperPort™ 11SE installed, please purchase the Brother NL-5 pack which is a multiple PC license agreement pack for up to 5 additional users. To purchase the NL-5 pack, contact your authorized Brother dealer or contact Brother customer service.

Finish

The installation is now complete.

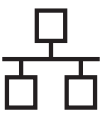
Now go to

Proceed to Install Optional Applications on page 24.

Note

XML Paper Specification Printer Driver

The XML Paper Specification Printer Driver is the most suitable driver when printing from applications that use the XML Paper Specification documents. Please download the latest driver by accessing the Brother Solutions Center at <http://solutions.brother.com/>.



For wired network interface users (Mac OS X 10.3.9 - 10.4.x - 10.5.x)

10

Before you install

- a** Make sure your machine is connected to the power and your Macintosh is ON. You must be logged on with Administrator rights.

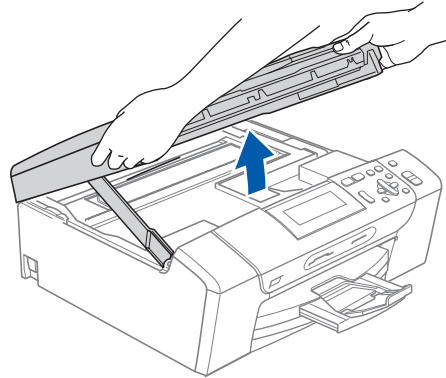
! IMPORTANT


- For the latest drivers and information on the Mac OS X you are using, visit <http://solutions.brother.com/>.
- For Mac OS X 10.3.0 to 10.3.8 users, upgrade to Mac OS X 10.3.9 - 10.5.x.
- Make sure there are no memory cards or a USB Flash memory drive inserted into the machine.

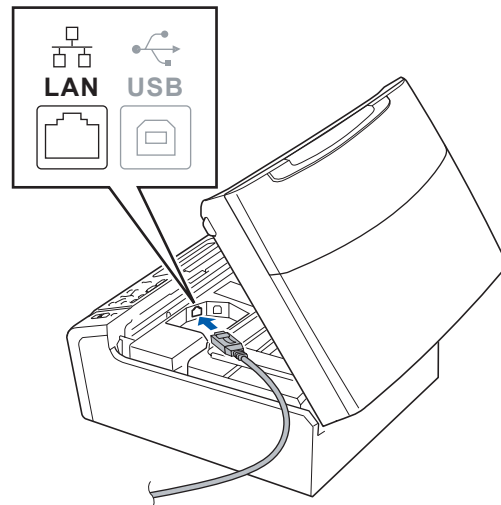
11

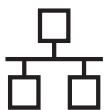
Connect the network cable

- a** Using both hands, use the plastic tabs on both sides of the machine to lift the scanner cover until it locks securely into the open position.

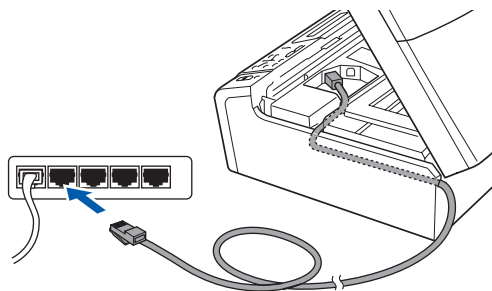


- b** Connect the network cable to the LAN socket marked with a  symbol. You will find the LAN socket inside the machine on the left as shown below.





- c** Carefully guide the network cable through the trench as shown below, following the trench around and toward the back of the machine. Then, connect the cable to your network.



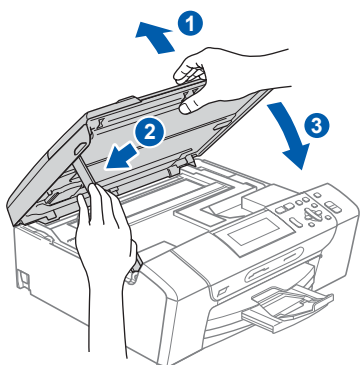
! IMPORTANT

Make sure that the cable does not restrict the cover from closing, or an error may occur.

Note

If both USB and LAN cables are being used, guide both cables through the trench with one on top of the other.

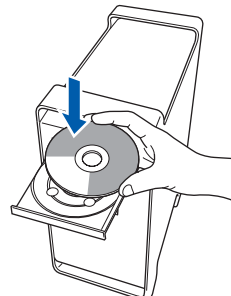
- d** Lift the scanner cover to release the lock ①. Gently push the scanner cover support down ② and close the scanner cover ③.



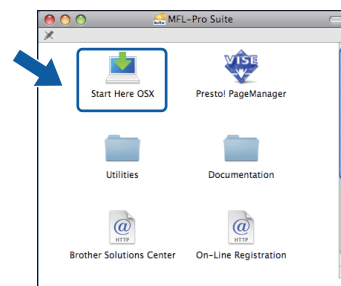
12

Install MFL-Pro Suite

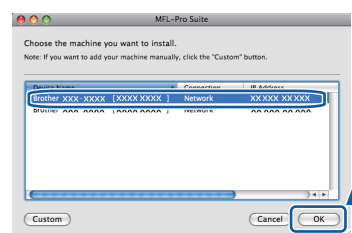
- a** Put the supplied CD-ROM into your CD-ROM drive.

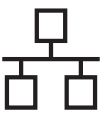


- b** Double-click the **Start Here OSX** icon to install.



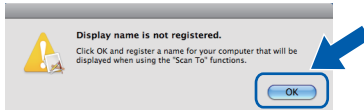
- c** Please wait, it will take a few seconds for the software to install. After the installation, click **Restart** to finish installing the software.
- d** The Brother software will search for the Brother device.
- e** If the machine is configured for your network, choose the machine from the list, and then click **OK**.



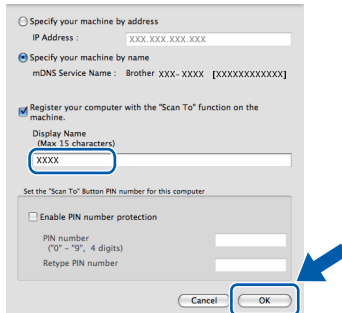


Note

- If your machine is not found over the network, confirm your network settings.
- If this screen appears click **OK**.

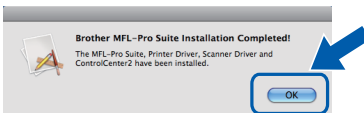


Enter a name for your Macintosh in **Display Name** up to 15 characters long and click **OK**. Go to **f**.



The name you enter will appear on the machine's LCD when you press the **Scan** key and choose a scan option. (For more information, see Network Scanning in the Software User's Guide on the CD-ROM.)

- f** When this screen appears, click **OK**.

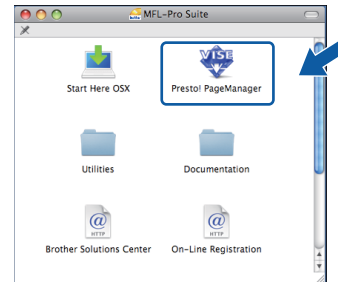


The installation of MFL-Pro Suite is now complete.
Go to step **13** on page 23.

13 Install Presto! PageManager

When Presto! PageManager is installed OCR capability is added to Brother ControlCenter2. You can easily scan, share and organize photos and documents using Presto! PageManager.

- a** Double-click the **Presto! PageManager** icon and follow the on-screen instructions.



14 Install MFL-Pro Suite on additional computers (if needed)

If you want to use your machine with multiple computers on the network, install MFL-Pro Suite on each computer. Go to step **12** on page 22. Also see step **10-a** on page 21 before you install.

Finish

The installation is now complete.

1 Install FaceFilter Studio supported by Reallusion, Inc

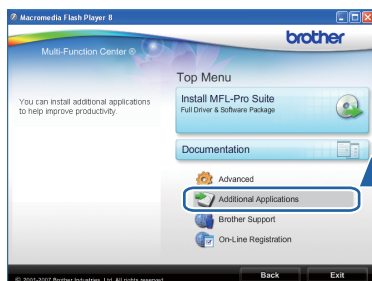
FaceFilter Studio is an easy-to-use borderless photo printing application. FaceFilter Studio also lets you edit your photo data and add photo effects such as red eye reduction or skin tone enhancement.

! IMPORTANT

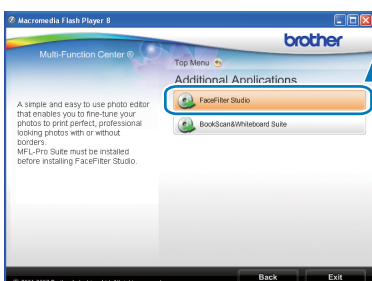
- The machine must be ON and connected to the computer.
- The computer must be connected to the Internet.
- Make sure you are logged on with Administrator rights.
- This application is not available for Windows Server® 2003/2008.

a Open the top menu again by ejecting and then reinserting the CD-ROM or by double-clicking the **start.exe** program from the root folder.

b The CD-ROM Top Menu will appear. Choose your language and then click **Additional Applications**.



c Click the **FaceFilter Studio** button to install.



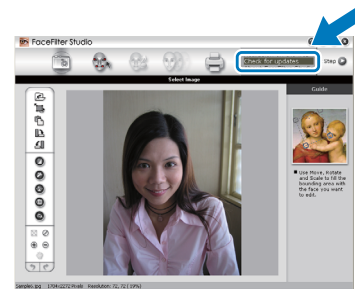
2 Install FaceFilter Studio Help (For Hong Kong/ Taiwan users, CD-ROM includes FaceFilter Studio Help)

To get instructions on how to use FaceFilter Studio, download and install FaceFilter Studio Help.

a To run FaceFilter Studio, go to **Start/All Programs/Reallusion/FaceFilter Studio** on your computer.

b Click the **?** button on the upper right corner of the screen.

c Click **Check for updates** to go to the Reallusion update web page.



d Click the **Download** button and choose a folder to save the file in.

e Close FaceFilter Studio before you start the installer for FaceFilter Studio Help. Double-click the downloaded file from the folder you specified and follow the on-screen instructions for installation.



Note

To view the complete FaceFilter Studio Help, choose **Start/All Programs/Reallusion/FaceFilter Studio/FaceFilter Studio Help** on your computer.

3 Install BookScan&Whiteboard Suite supported by Reallusion, Inc

You can install **BookScan&Whiteboard Suite**. The **BookScan Enhancer** software can correct your scanned book images automatically. The **Whiteboard Enhancer** software cleans up and enhances text and images from photos taken of your whiteboard. (Internet access required.)

! IMPORTANT

- The machine must be ON and connected to the computer.
- The computer must be connected to the Internet.
- Make sure you are logged on with Administrator rights.
- This application is not available for Windows Server® 2003/2008.

a Open the top menu again by ejecting and then reinserting the CD-ROM or by double-clicking the **start.exe** program from the root folder.

b The CD-ROM Top Menu will appear. Choose your language and then click **Additional Applications**.



c Click the **BookScan&Whiteboard Suite** button to install.



BRAdmin Light utility (for Windows® users)

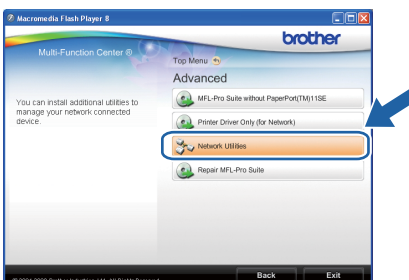
BRAdmin Light is a utility for initial setup of Brother network connected devices. It also can search for Brother products on your network, view the status and configure basic network settings, such as IP address. For more information on BRAdmin Light, visit us at <http://solutions.brother.com/>.

Note

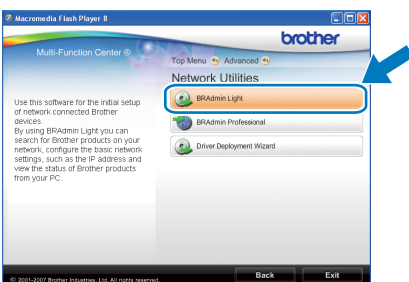
If you require more advanced printer management, use the latest Brother BRAdmin Professional utility version that is available as a download from <http://solutions.brother.com/>.

Install the BRAdmin Light configuration utility

- a** Click **Advanced** and then **Network Utilities** on the menu screen.



- b** Click **BRAdmin Light** and follow the on-screen instructions.

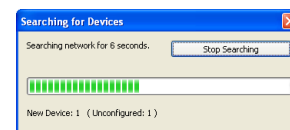


Set your IP address, Subnet Mask and Gateway using BRAdmin Light

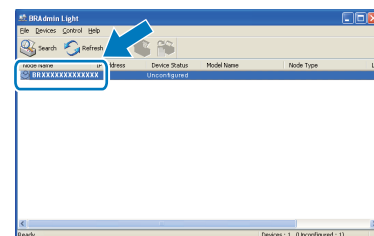
Note

If you have a DHCP/BOOTP/RARP server in your network, you don't have to do the following operation. The machine will automatically obtain its own IP address.

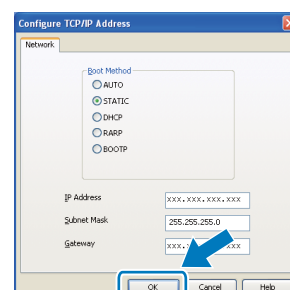
- a** Start BRAdmin Light. It will search for new devices automatically.



- b** Double-click the unconfigured device.



- c** Choose **STATIC** for the **Boot Method**. Enter the **IP Address**, **Subnet Mask** and **Gateway**, and then click **OK**.



- d** The address information will be saved to the machine.

BRAdmin Light utility (for Mac OS X users)

BRAdmin Light is a utility for initial setup of Brother network connected devices. It also can search for Brother products on your network, view the status and configure basic network settings, such as IP address from a computer running Mac OS X 10.3.9 - 10.5.x.

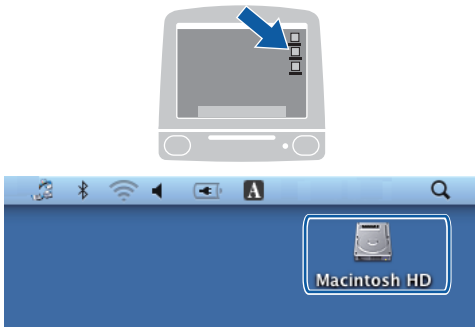
The BRAdmin Light software will be installed automatically when you install the printer driver. If you have already installed the printer driver, you don't have to install BRAdmin Light again. For more information on BRAdmin Light, visit us at <http://solutions.brother.com/>.

Set your IP address, Subnet Mask and Gateway using BRAdmin Light

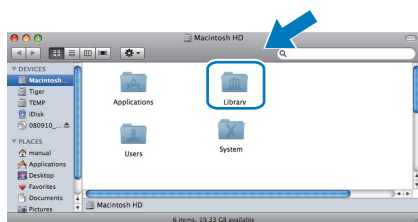
Note

- If you have a DHCP/BOOTP/RARP server in your network, you don't have to do the following operation. The machine will automatically obtain its own IP address.
- Make sure that version 1.4.2 or later of Java™ client software is installed on your computer.

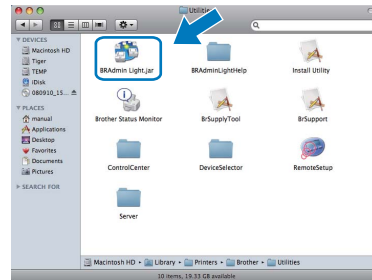
- a** Double-click the **Macintosh HD** icon on your desktop.



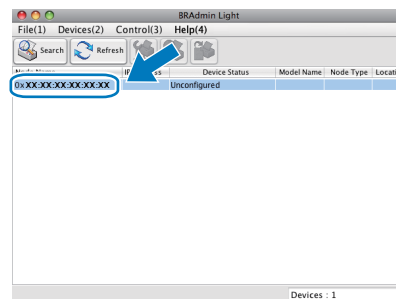
- b** Choose **Library**, **Printers**, **Brother** and then **Utilities**.



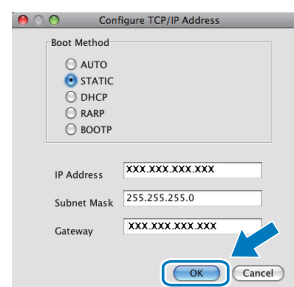
- c** Double-click the file **BRAdmin Light.jar** and run the software. BRAdmin Light will then search for new devices automatically.



- d** Double-click the unconfigured device.



- e** Choose **STATIC** for the **Boot Method**. Enter the **IP Address**, **Subnet Mask** and **Gateway**, and then click **OK**.



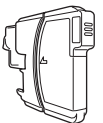



- f** The address information will be saved to the machine.

Replacement consumables

When the time comes to replace ink cartridges, an error message will be indicated on the LCD. For more information about the ink cartridges for your machine, visit <http://www.brother.com/original/> or contact your local Brother re-seller.

Ink cartridge

Black	Yellow	Cyan	Magenta
LC67BK	LC67Y	LC67C	LC67M
			

What is Innobella™?

Innobella™ is a range of genuine consumables offered by Brother. The name "Innobella™" derives from the words "Innovation" and "Bella" (meaning "Beautiful" in Italian) and is a representation of the "innovative" technology providing you with "beautiful" and "long lasting" print results.



Trademarks

The Brother logo is a registered trademark of Brother Industries, Ltd.

Brother is a registered trademark of Brother Industries, Ltd.

Multi-Function Link is a registered trademark of Brother International Corporation.

Windows Vista is either a registered trademark or a trademark of Microsoft Corporation in the United States and other countries.

Microsoft, Windows, Windows Server and Internet Explorer are registered trademarks of Microsoft Corporation in the United States and/or other countries.

Apple, Macintosh and Safari are trademarks of Apple Inc., registered in the United States and other countries.

Nuance, the Nuance logo, PaperPort and ScanSoft are trademarks or registered trademarks of Nuance Communications, Inc. or its affiliates in the United States and/or other countries.

FaceFilter Studio is a trademark of Reallusion, Inc.

Each company whose software title is mentioned in this manual has a Software License Agreement specific to its proprietary programs.

All other trademarks are the property of their respective owners.

Compilation and Publication

Under the supervision of Brother Industries, Ltd., this manual has been compiled and published, covering the latest product descriptions and specifications.

The contents of this manual and the specifications of this product are subject to change without notice.

Brother reserves the right to make changes without notice in the specifications and materials contained herein and shall not be responsible for any damages (including consequential) caused by reliance on the materials presented, including but not limited to typographical and other errors relating to the publication.

Copyright and License

©2009 Brother Industries, Ltd. All rights reserved.

This product includes software developed by the following vendors:

©1983-1998 PACIFIC SOFTWARES, INC.