

For Windows® 7 Users

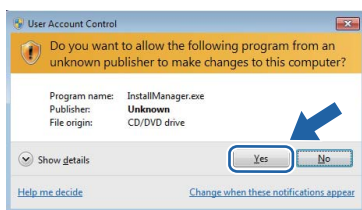
Before using the machine

Insert the supplied CD-ROM for Windows® 7. For setting up the machine and installing the printer driver, follow the steps in the Quick Setup Guide along with the information on this sheet.

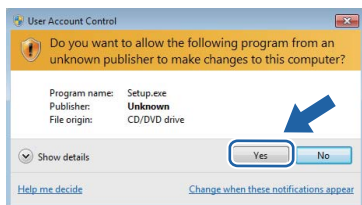
Instructions for installation

If the **User Account Control** dialog box appears on your computer during installation of the driver & software or BRAdmin Light for Windows®, click **Yes**. Then, proceed to the next step in the Quick Setup Guide.

Driver & Software installation

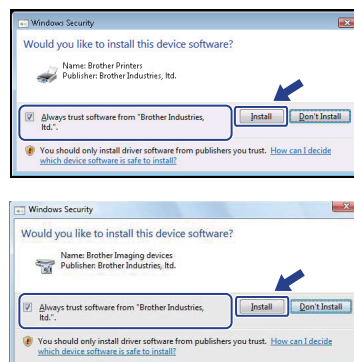


BRAdmin Light for Windows® installation



Note

If either of the following screens appears, click the check box and click **Install** to complete the installation properly.



About Status Monitor

Status Monitor display

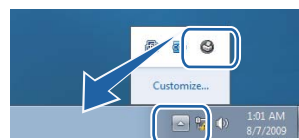
■ For Laser/LED Models:

If you have set the **Enable Status Monitor** during installation, you will find the button or **Status Monitor** icon on the taskbar.

■ For Inkjet Models:

Your initial setting of **Status Monitor** is ON, and you will find the button or **Status Monitor** icon on the taskbar.

To show the **Status Monitor** icon on your taskbar, click the button. The **Status Monitor** icon will appear in the small window. Then drag the icon to the taskbar.



Computer requirements

Minimum System Requirements and Supported PC Software Functions

Operating System ¹	Supported Functions	Minimum Processor	Minimum RAM	Recommended RAM	Required Hard Disk Space	
					For Drivers	For Applications
Windows® 7 ²	Printing, Scanning, PC-FAX ³ , Removable Disk ⁴	Intel® Pentium® 4 or equivalent 64-bit (Intel® 64 or AMD64) supported CPU	1GB (32-bit) 2GB (64-bit)	1GB (32-bit) 2GB (64-bit)	650MB	530MB

1 Microsoft® Internet Explorer® 5.5 or greater.

2 For WIA, 1200 x 1200 dpi resolution. Brother Scanner Utility enables to enhance up to 19200 x 19200 dpi.

3 PC FAX supports black and white faxing only.

4 Removable disk is a function of PhotoCapture Center®.

For the latest driver updates, visit us at <http://solutions.brother.com/>. All trademarks, brand and product names are property of their respective companies.