



Start Here

WARNING

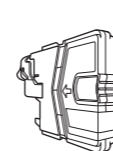
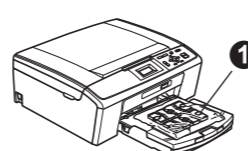
WARNING indicates a potentially hazardous situation which, if not avoided, could result in death or serious injuries.

1 Unpack the machine and check the components

1

- Note**
- The components of your box may differ depending on your country.
 - Save all packing materials and the box in case for any reason you must ship your machine.
 - Please use the supplied USB cable for a USB connection.

- Remove the protective tape and film covering the machine, and also from the LCD.
- Remove the plastic bag ① containing the ink cartridges from on top of the paper tray.
- Make sure you have all components.



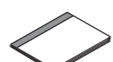
Inbox Ink Cartridges [x4]¹
Black
Yellow
Cyan
Magenta
Installation CD-ROM
Documentation CD-ROM



Power Cord



USB Interface Cable



Safety and Legal booklet

Basic User's Guide

Quick Setup Guide

¹ Approx. 65% yield of the replacement cartridge. For details, see Consumable Items in the Basic User's Guide.



Australia & New Zealand

Hong Kong, Malaysia & Singapore

South Africa

Thailand

The supplied mains plug is a grounded three pin plug. The supplied mains plug is a side grounded two pin plug.

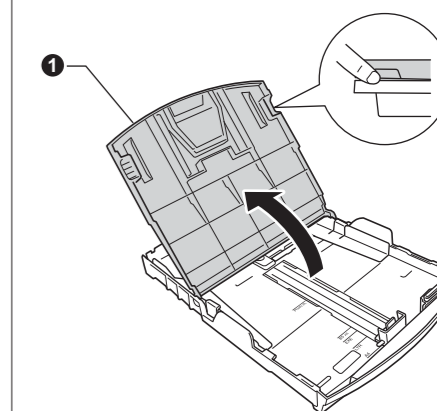
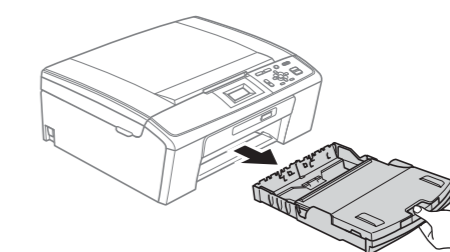
WARNING

Plastic bags are used in the packaging of your machine. To avoid danger of suffocation, please keep these bags away from babies and children. To ensure safe operation the supplied plug must be inserted only into a standard power outlet that is properly grounded through the standard electrical wiring. Non grounded equipment may cause an electrical shock hazard, and may cause excessive electrical noise radiation.

2 Load plain A4 paper

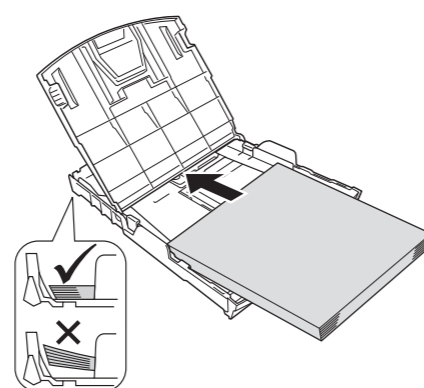
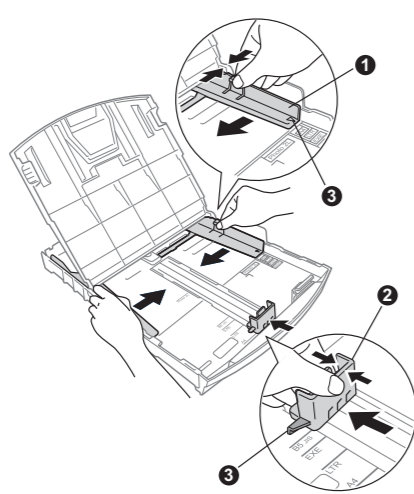
2

- Pull out the paper tray.
- Lift the output paper tray cover ①.



- Press and slide the paper side guides ① and paper length guide ② to fit the paper size.

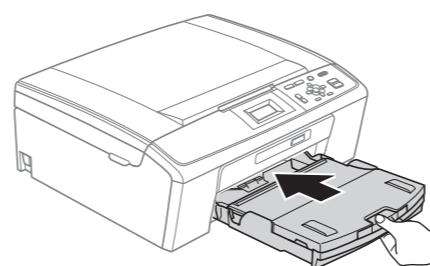
Make sure that the triangular marks ③ on the paper side guides ① and paper length guide ② line up with the mark for the paper size you are using.



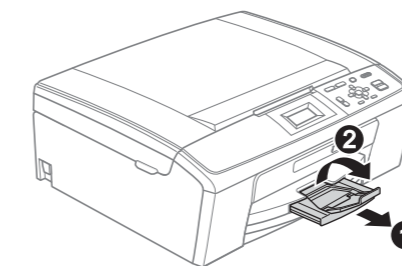
IMPORTANT
DO NOT push the paper in too far.

- Fan the stack of paper well.
- Gently put the paper into the paper tray. Check that the paper is flat in the tray.
- Gently adjust the paper side guides to the paper with both hands. Make sure the paper side guides touch the edges of the paper.

- Close the output paper tray cover and slowly push the paper tray back into the machine.



- Pull out the paper support ① until it clicks, and then unfold the paper support flap ②.



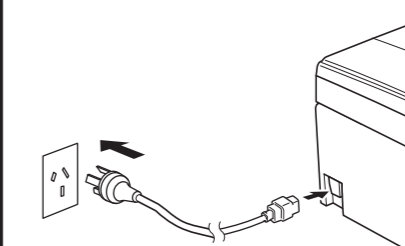
3 Connect the power cord

3

- Connect the power cord.

WARNING

The machine must be fitted with an earthed plug.



IMPORTANT

DO NOT connect the USB cable yet.

Note

The Warning LED on the control panel will stay on until you have installed the ink cartridges.

4 Choose your language (not available in HongKong/Taiwan)

4

- Press ▲ or ▼ to choose your language and press OK.
- Press ▲ or ▼ to choose Yes or No and press OK.

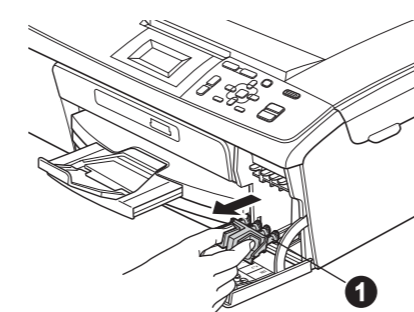
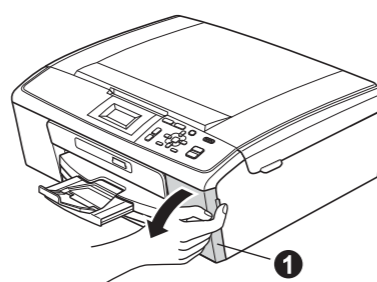
Note

If you set the wrong language, you can change it again after setting the date and time. (For details see Changing LCD language in chapter 1 in the Advanced User's Guide on the documentation CD-ROM.)

5 Install the ink cartridges

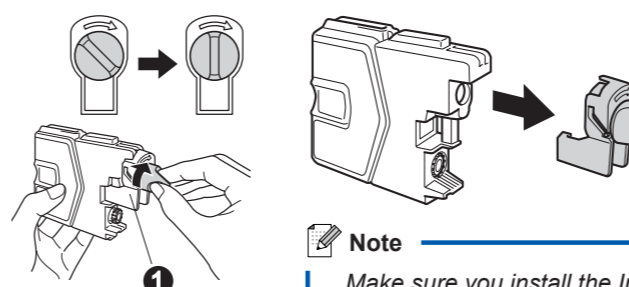
5

- The LCD shows No Ink Cartridge.
- Open the ink cartridge cover ①.
- Remove the green protective part ①.



Note
Do not throw away the green protective part. You will need it if you transport the machine.

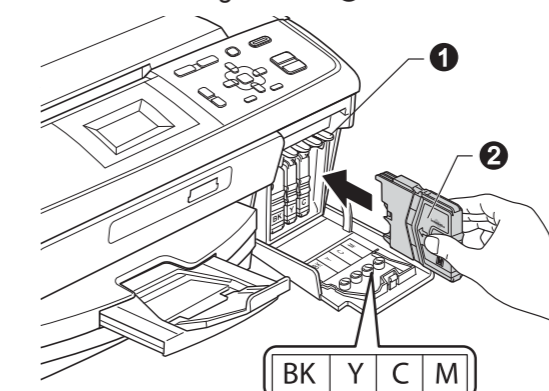
- Unpack the ink cartridge. Turn the green knob on the protective yellow cap clockwise until it clicks to release the vacuum seal, then remove the cap ①.



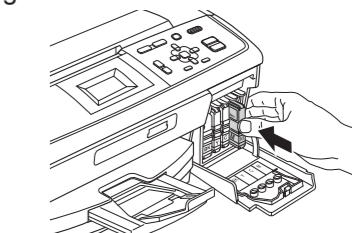
Note

Make sure you install the Inbox Ink Cartridges included with your machine first.

- Install each ink cartridge in the direction of the arrow on the label. Take care to match the colour of the lever ① with the cartridge colour ②.



- Gently push the ink cartridge until it clicks. After all the ink cartridges are installed close the ink cartridge cover.



IMPORTANT

After initial installation of the ink cartridges, the machine will start cleaning the ink tube system. This cleaning process will last approximately four minutes. DO NOT unplug the machine from the power outlet or attempt to stop the cleaning process. Interruption of cleaning process may cause undesired print quality problems.

6 Check the print quality

6

- When the preparation process has finished, the LCD shows Set Paper and Press Start. Press Colour Start.

- Check the quality of the four colour blocks ① on the sheet. (black/yellow/cyan/magenta)



■ If all lines are clear and visible, press **Yes** to finish the quality check.

■ If you can see missing short lines, press **No** and follow the steps on the LCD.



7 Set the LCD contrast (if needed)

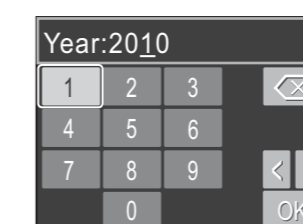
7

- Press Menu.
- Press ▲ or ▼ to choose General Setup, and then press OK.
- Press ▲ or ▼ to choose LCD Settings, and press OK.
- Press ▲ or ▼ to choose LCD Contrast, and then press OK.
- Press ◀ or ▶ to choose the contrast level, and then press OK.
- Press Stop/Exit.

8 Set the date and time

8

- Press Menu.
- Press ▲ or ▼ to choose Initial Setup, and then press OK.
- Press ▲ or ▼ to choose Date&Time, and then press OK.
- To enter the last two digits of the year, press ▲, ▼, ◀ or ▶ to select a number and press OK. To save the year, press ▲, ▼, ◀ or ▶ to select **OK** and press OK.



(e.g. Enter 10 for 2010.)

- Repeat for month/day/time in 24-hour format.
- Press Stop/Exit.

Note

If you make a mistake and want to start again, press Stop/Exit to go back to step a.



Turn the sheet over.

For Windows®

Before you install

- 9** a. Make sure that your computer is ON and you are logged on with Administrator rights.

IMPORTANT

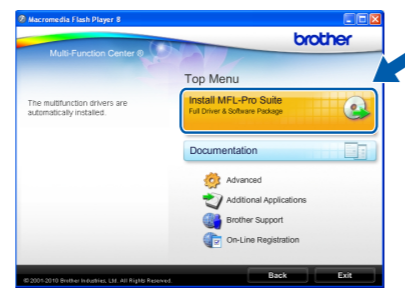
- DO NOT connect the USB cable yet.
- For the latest drivers and information, visit <http://solutions.brother.com/>
- Close any applications.
- The screen may differ depending on the operating system.
- For Windows Vista® and Windows® 7, when the User Account Control screen appears, click Allow or Yes.

Install MFL-Pro Suite

- 10** a. Insert the supplied installation CD-ROM into your CD-ROM drive. Choose your language.

Note
If the Brother screen does not appear automatically, go to My Computer (Computer), double-click the CD-ROM icon, and then double-click start.exe.

- b. Click Install MFL-Pro Suite, and click Yes if you accept the license agreements.

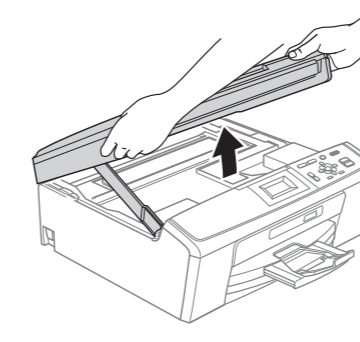


- c. Follow the on-screen instructions until this screen appears:

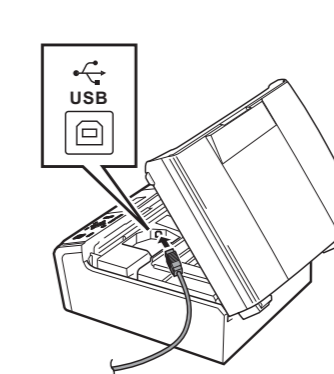


Connect the USB cable

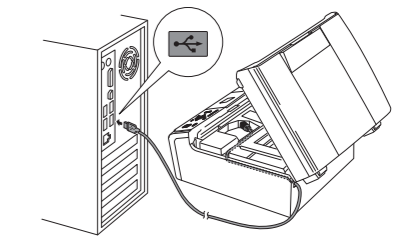
- 11** a. Lift the scanner cover until it locks securely into the open position.



- b. Connect the USB cable to the USB socket marked with a USB symbol. The USB socket is inside the machine as shown.

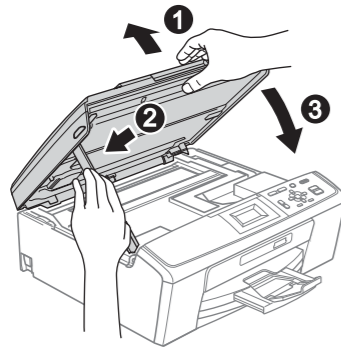


- c. Carefully guide the USB cable into the trench and out the back of the machine. Connect the cable to your computer.



IMPORTANT
Make sure that the cable does not restrict the cover from closing, or an error may occur.

- d. Lift the scanner cover to release the lock ①. Gently push the scanner cover support down ② and close the scanner cover ③.



- e. The installation will continue automatically. The installation screens appear one after another.

IMPORTANT
DO NOT cancel any of the screens. It may take a few minutes for installation to complete.

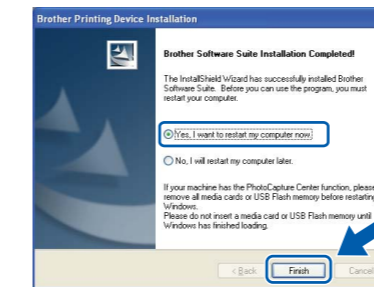
- f. When the User's Guides screen is displayed, click View Manuals on the Web if you want to download the manuals and follow the on-screen instructions. You can also view the manuals on the documentation CD-ROM.

- g. When the On-Line Registration screen appears, make your selection and follow the on-screen instructions.

- h. If you do not want to set your machine as the Default printer, uncheck Set as Default Printer.

Finish and restart

- 12** a. Click Finish to restart your computer.



Note

- If an error message appears during the software installation, run the Installation Diagnostics located in start/All Programs/Brother/DCP-JXXX (where DCP-JXXX is your model name).
- Depending on your security settings, a Windows Security or antivirus software window may appear when using the machine or its software. Please allow or permit the window to continue.

- b. In the Check for Firmware Updates screen, choose the firmware update setting you want and click OK.

Note
Internet access is required for the firmware update.

Finish The installation is now complete.

Note
XML Paper Specification Printer Driver
The XML Paper Specification Printer Driver is the most suitable driver when printing from applications that use the XML Paper Specification documents. Please download the latest driver by accessing the Brother Solutions Center at <http://solutions.brother.com/>

Install Optional Applications supported by Reallusion, Inc

- 13** FaceFilter Studio is an easy-to-use borderless photo printing application. FaceFilter Studio also lets you edit your photo data and add photo effects such as red eye reduction or skin tone enhancement. The BookScan Enhancer software can correct your scanned book images automatically. The Whiteboard Enhancer software cleans up and enhances text and images from photos taken of your whiteboard.

IMPORTANT

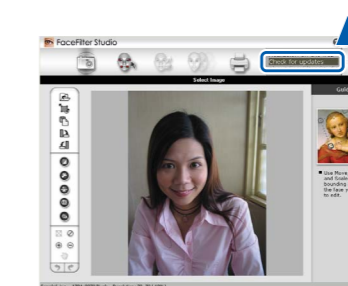
- The machine must be ON and connected to the computer.
- The computer must be connected to the internet.
- Make sure you are logged on with Administrator rights.

- a. Open the top menu again by ejecting and then reinserting the installation CD-ROM or by double-clicking the start.exe program from the root folder.
- b. The CD-ROM Top Menu will appear. Choose your language and then click Additional Applications.
- c. Click the button for the application you want to install.
- d. Go back to the Additional Applications screen to install more applications.

Install FaceFilter Studio Help (For Hong Kong/Taiwan users, installation CD-ROM includes FaceFilter Studio Help)

- 14** To get instructions on how to use FaceFilter Studio, download and install FaceFilter Studio Help.
- a. Go to start/All Programs/Reallusion/FaceFilter Studio on your computer.

- b. Click the ? button on the upper right corner of the screen, and then click Check for updates to go to the Reallusion update web page.
- c. Click the Download button and choose a folder to save the file in.



- d. Close FaceFilter Studio, double-click the downloaded file from the folder you specified, and then follow the on-screen instructions to install.

Note
To view FaceFilter Studio Help, go to start/All Programs/Reallusion/FaceFilter Studio/FaceFilter Studio Help on your computer.

For Mac OS X

Before you install

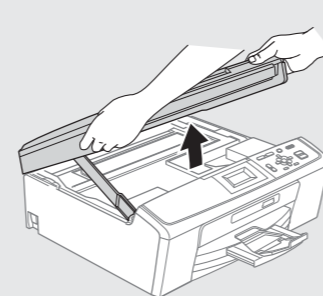
- 9** Make sure your machine is connected to the power and your Macintosh is ON. You must be logged on with Administrator rights.

IMPORTANT

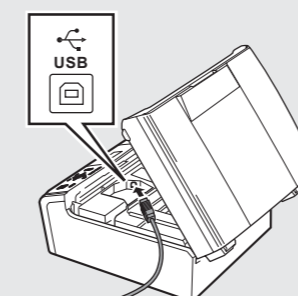
- For the latest drivers and information on the Mac OS X you are using, visit <http://solutions.brother.com/>
- For Mac OS X 10.4.0 to 10.4.10 users, upgrade to Mac OS X 10.4.11 - 10.6.x.

Connect the USB cable

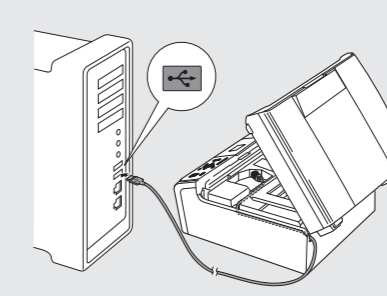
- 10** a. Lift the scanner cover until it locks securely into the open position.



- b. Connect the USB cable to the USB socket marked with a USB symbol. The USB socket is inside the machine as shown.



- c. Carefully guide the USB cable into the trench and out the back of the machine. Connect the cable to your Macintosh.



IMPORTANT

- DO NOT connect the machine to a USB port on a keyboard or a non-powered USB hub. Connect the machine directly to your Macintosh.
- Make sure that the cable does not restrict the cover from closing, or an error may occur.

Install MFL-Pro Suite

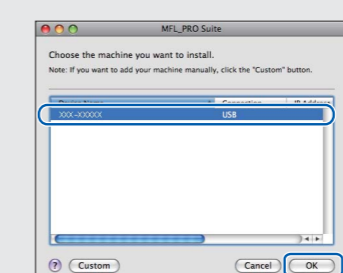
- 11** a. Insert the supplied installation CD-ROM into your CD-ROM drive.

- b. Double-click the Start Here OSX icon.

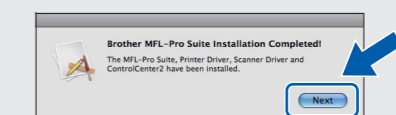


Note
It may take a few minutes for installation to complete. After the installation, the Brother software will search for the Brother device.

- c. Choose the machine from the list, and then click OK.



- d. Click Next.



- e. When the Brother Support screen appears, click Close to finish the installation.

Finish
The installation is now complete.

- d. Lift the scanner cover to release the lock ①. Gently push the scanner cover support down ② and close the scanner cover ③.

