

Start Here

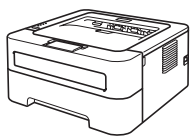
- ⚠ WARNING**

⚠ CAUTION
- WARNING** indicates a potentially hazardous situation which, if not avoided, could result in death or serious injuries.

CAUTION indicates a potentially hazardous situation which, if not avoided, may result in minor or moderate injuries.

1 Unpack the machine and check the components

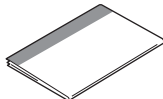
- Note**
- We recommend that you save the original packaging.
 - The components included in the box may differ depending on your country.
 - If for any reason you must ship your machine, carefully repack the machine in the original packaging to avoid any damage during transit. The machine should be adequately insured with the carrier. How to repack the machine, see *Packing and shipping the machine in the User's Guide*.
 - To ensure safe operation the supplied plug must be inserted only into a standard power outlet that is properly grounded through the standard electrical wiring. Non grounded equipment may cause an electrical shock hazard, and may cause excessive electrical noise radiation.
- USB cable**
- It is recommended to use a USB 2.0 cable (Type A/B) that is no more than 2 meters (6 feet) long.



AC Power Cord



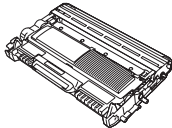
CD-ROM (including Documentation)



Quick Setup Guide



Safety and Legal Booklet



Drum Unit and Toner Cartridge Assembly (pre-installed)



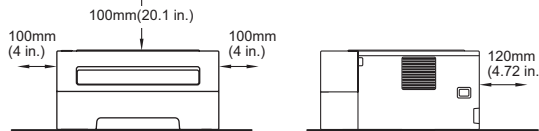
USB Interface Cable

⚠ WARNING

Plastic bags are used in the packaging of your machine. Plastic bags are not toys. To avoid danger of suffocation, please keep these bags away from babies and children and dispose of them properly.

Note

Keep a minimum gap around the machine as shown in the illustration.



2 Remove the packing material from the machine

! IMPORTANT

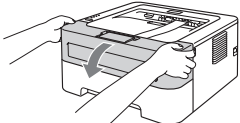
DO NOT connect the AC power cord yet.

- a.** Remove the packing tape from the outside of the machine and the silica gel pack from the face-down output tray.

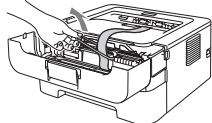
⚠ CAUTION

DO NOT eat the Silica Pack. Discard immediately.

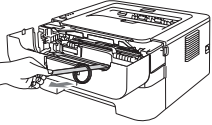
- b.** Open the front cover.



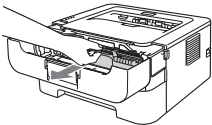
- c.** Lift the elastic band off the drum.



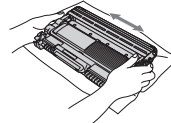
- d.** Pull the paper strip to remove the protective material as shown in the illustration.



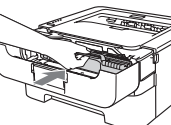
- e.** Take out the drum unit and toner cartridge assembly.



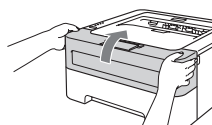
- f.** Gently shake it from side to side several times to distribute the toner evenly inside the assembly.



- g.** Put the drum unit and toner cartridge assembly back in the machine.

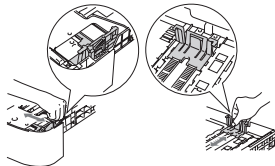


- h.** Close the front cover of the machine.



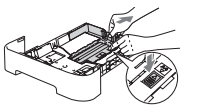
3 Load paper in the paper tray

- a.** Pull the paper tray completely out of the machine.
- b.** While pressing the green paper-guide release lever, slide the paper guides to fit the paper size you are loading in the tray. Make sure that the guides are firmly in the slots.



Note

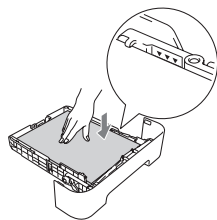
For Legal or Folio size paper, press the release button in the bottom of the paper tray and then pull out the back of the paper tray. (Legal or Folio size paper are not available in some regions.)



- c.** Fan the stack of paper well to avoid paper jams and misfeeds.

- d.** Put paper in the tray and make sure:

- The paper is below the maximum paper mark (▼▼▼). Over filling the paper tray will cause paper jams.
- The side to be printed on must be face down.
- The paper guides touch the sides of the paper so it will feed properly.



- e.** Put the paper tray firmly back in the machine. Make sure that it is completely inserted into the machine.

4 Print a test page

- a.** Connect the AC power cord to the machine and then connect it to an AC power outlet.

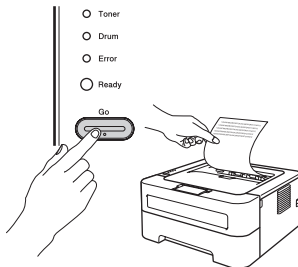
- b.** Turn on the machine power switch.

- c.** After the machine has finished warming up, the **Ready** LED stops blinking and stays green.

- d.** Press **Go**. The machine will print a test page. Check that the test page has printed correctly.

Note

This function will not be available after the first print job you send from your computer.



Now go to

Turn the sheet over to install the printer driver.

Printer LED Indications

Blinking: or or ON: or or OFF:

Printer LED	OFF	SLEEP DEEP SLEEP	WARMING UP COOLING DOWN ¹	READY	RECEIVING DATA DATA REMAINING ²
Toner					
Drum					
Error					
Ready					

Printer LED	TONER LOW ³	REPLACE TONER ⁴	TONER ENDED	DRUM END SOON ³	REPLACE DRUM
Toner					
Drum					
Error					
Ready					
User's Guide	Chapter 4	Chapter 4	Chapter 4	Chapter 4	Chapter 4

Printer LED	COVER OPEN PAPER JAM ²	NO PAPER	DRUM ERROR ²	DRUM STOP	Service call error ²
Toner					
Drum					
Error					
Ready					
User's Guide	Chapter 5	Chapter 5	Chapter 4	Chapter 4	Chapter 3

¹ The LED will blink ON and OFF at 1 second intervals.
² The LED will blink ON and OFF at 0.5 second intervals.
³ The yellow LED will blink in a pattern of ON for 2 seconds and then OFF for 3 seconds.
⁴ You can change the toner setting to the continue mode. Press **Go** seven times (all the LED flashes twice, and then the **Ready** LED is on).
The machine continues printing until the LED indicates the toner ended message.

For Windows®

Before you install

Make sure that your computer is ON and you are logged on with Administrator rights.

! IMPORTANT

- If there are any programs running, close them.
- The screens may differ depending on your operating system.

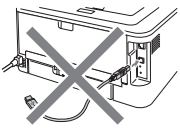
Note

- For Windows Vista® and Windows® 7 users, when the **User Account Control** screen appears, click **Allow** or **Yes**.
- Depending on your security settings, a Windows Security or antivirus software window may appear when using the machine or its software. Please allow or permit the window to continue.
- **XML Paper Specification Printer Driver**
The XML Paper Specification Printer Driver is the most suitable driver when printing from the applications that use the XML Paper Specification documents. Please download the latest driver by accessing the Brother Solutions Center at <http://solutions.brother.com/>.

5

For USB Interface Cable Users

- a. Turn off the machine and make sure the USB interface cable is **NOT** connected to the machine, and then begin installing the printer driver. If you have already connected the cable, disconnect it.



Install the printer driver

- b. Put the installation CD-ROM into your CD-ROM drive. If prompted, select your model and language.

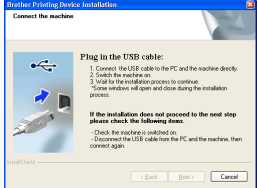
Note

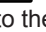
If the Brother screen does not appear automatically, go to **My Computer (Computer)**, double-click the CD-ROM icon, and then double-click **start.exe**.

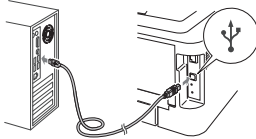
- c. Click **Install Printer Driver**, and click **Yes** if you accept the license agreement.



- d. Follow the on-screen instructions until this screen appears.



- e. Connect the USB cable to the USB connector marked with the  symbol, and then connect the cable to the computer.



- f. Turn the machine on, and follow the on-screen instructions to complete setup.

Finish

The installation is now complete.

For Mac OS X

Before you install


! IMPORTANT

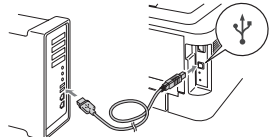
- For the latest drivers and information on the Mac OS X you are using, visit <http://solutions.brother.com/>.
- For Mac OS X 10.4.0 to 10.4.10 users, upgrade to Mac OS X 10.4.11 - 10.6.x.

Make sure your machine is plugged in and your Macintosh is switched ON. You must be logged on with Administrator rights.

5

For USB Interface Cable Users

- a. Connect the USB cable to the USB connector marked with a  symbol, and then connect the cable to your Macintosh.



! IMPORTANT

- **DO NOT** connect the printer to a USB port on a keyboard or a non-powered USB hub.
- Connect the printer directly to your computer.

- b. Make sure the machine power switch is on.

Install the printer driver

- c. Put the installation CD-ROM into your CD-ROM drive.

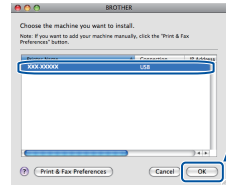
- d. Double-click the **Start Here OSX** icon. Follow the on-screen instructions.



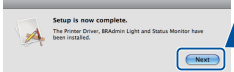
Note

It may take a few minutes for installation to complete.

- e. Follow the on-screen instructions until this screen appears. Choose your machine from the list, and then click **OK**.



- f. Click **Next**.



Note

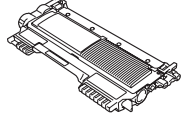
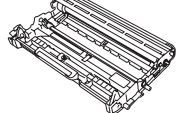
When the **Brother Support** screen appears, make your selection and follow the on-screen instructions.

Finish

The installation is now complete.

Consumables

When the time comes to replace consumable items, an error will be indicated by the LED's on the control panel. For more information about the consumables for your machine, visit us at <http://www.brother.com/original/> or contact your local Brother reseller.

Toner cartridge : TN-420 / TN-450	Drum unit : DR-420
	

For replacing the consumable items, see *Replacing consumable items* in the *User's Guide*.

Print the Printer Settings Page

The Printer Settings Page lists all the current printer settings.

- a. Make sure that the front cover is closed and the power cord is plugged in.
- b. Turn on the machine and wait until the machine is in the Ready state.
- c. Press **Go** three times within 2 seconds. The machine will print the current printer settings page.

Brother CreativeCenter



Get inspired. If you're using Windows, double-click the Brother CreativeCenter icon on your desktop to access our FREE web site with many ideas and resources for personal and professional use.



Mac users can access Brother CreativeCenter at this web address:
<http://www.brother.com/creativecenter/>