



Multi-Protocol On-board Ethernet Multi-function Print Server and Wireless Ethernet Multi-function Print Server

NETWORK USER'S GUIDE



This Network User's Guide provides useful information of wired and wireless network settings, security settings and Internet fax settings using your Brother machine. You can also find supported protocol information and detailed troubleshooting tips.

To find basic information about network and advanced network features of your Brother machine, see the *Network Glossary*.

To download the latest manual, please visit the Brother Solutions Center at (<http://solutions.brother.com/>). You can also download the latest drivers and utilities for your machine, read FAQs and troubleshooting tips or learn about special printing solutions from the Brother Solutions Center.

Definitions of notes

We use the following icons throughout this User's Guide:

 IMPORTANT	<u>IMPORTANT</u> indicate a potentially hazardous situation which, if not avoided, may result in damage to property or loss of product functionality.
 Note	Notes tell you how you should respond to a situation that may arise or give tips about how the operation works with other features.

Compilation and publication notice

Under the supervision of Brother Industries, Ltd., this manual has been compiled and published, covering the latest product's descriptions and specifications.

The contents of this manual and the specifications of this product are subject to change without notice.

Brother reserves the right to make changes without notice in the specifications and materials contained herein and shall not be responsible for any damages (including consequential) caused by reliance on the materials presented, including but not limited to typographical and other errors relating to the publication.

©2010 Brother Industries, Ltd.

IMPORTANT NOTE

- This product is approved for use in the country of purchase only. Do not use this product outside the country of purchase as it may violate the wireless telecommunication and power regulations of that country.
- Windows® XP in this document represents Windows® XP Professional, Windows® XP Professional x64 Edition and Windows® XP Home Edition.
- Windows Server® 2003 in this document represents Windows Server® 2003, Windows Server® 2003 x64 Edition, Windows Server® 2003 R2 and Windows Server® 2003 R2 x64 Edition.
- Windows Server® 2008 in this document represents Windows Server® 2008 and Windows Server® 2008 R2.
- Not all models are available in all countries.

Table of Contents

1	Introduction	1
	Network features.....	1
	Other Network features	3
2	Changing your machine's network settings	4
	How to change your machine's network settings (IP address, Subnet mask and Gateway).....	4
	Using the control panel	4
	Using BRAdmin Light utility	4
	Other Management Utilities	7
	Web Based Management (web browser)	7
	BRAdmin Professional 3 utility (Windows®)	7
	Web BRAdmin (Windows®).....	7
3	Configuring your machine for a wireless network	8
	Overview	8
	Step by step chart for wireless network configuration	9
	For Infrastructure mode	9
	For Ad-hoc mode.....	10
	Confirm your network environment.....	11
	Connected to a computer with a WLAN access point/router in the network (Infrastructure mode).....	11
	Connected to a wireless capable computer without a WLAN access point/router in the network (Ad-hoc mode).....	11
	Confirm your wireless network setup method.....	12
	Configuration using the WPS/AOSS™ control panel menu (Infrastructure mode only) (Recommended).....	12
	Configuration using the machine's control panel Setup Wizard to configure your wireless network machine.....	12
	Configuration using the Brother installer application on the installation CD-ROM to configure your wireless network machine	13
	Configuration using the PIN Method of Wi-Fi Protected Setup (Infrastructure mode only)	14
	Configuring your machine for a wireless network (for Infrastructure mode and Ad-hoc mode).....	15
	Using WPS or AOSS™ from the control panel menu to configure your machine for a wireless network.....	15
	Using the Setup Wizard from the control panel	15
	Configuring your machine when the SSID is not broadcast	16
	Using the Brother automatic installer application on the installation CD-ROM to configure your machine for a wireless network	20
	Using the PIN Method of Wi-Fi Protected Setup	20
4	Wireless configuration using the Brother installer application	24
	Before configuring the wireless settings	24
	Configure the wireless settings.....	25

5	Control panel setup	28
	Network menu.....	28
	TCP/IP	28
	Setup Wizard	30
	WPS/AOSS™	30
	WPS w/PIN Code	31
	WLAN Status	31
	Ethernet	31
	MAC Address	31
	E-mail / IFAX (Available when IFAX is downloaded).....	31
	Time Zone	34
	Network I/F	34
	LDAP (MFC-J6910DW only)	35
	Restoring the network settings to factory default.....	36
	Printing the Network Configuration List	37
	Printing the WLAN Report	38
	Function table and default factory settings	39
6	Web Based Management	42
	Overview.....	42
	How to configure the machine settings using Web Based Management (web browser).....	43
	Secure Function Lock 2.0	45
	How to configure the Secure Function Lock 2.0 settings using Web Based Management (web browser).....	45
	Changing the Scan to FTP configuration using a web browser.....	48
	Changing the Scan to Network configuration using a web browser	49
	Changing the LDAP configuration using a web browser (MFC-J6910DW only).....	50
7	LDAP operation (MFC-J6910DW only)	51
	Overview.....	51
	Changing the LDAP configuration using a Browser	51
	LDAP operation using the control panel	51
	Changing the LDAP configuration using BRAdmin Professional (For Windows®)	52
8	Internet fax	54
	Internet fax Overview.....	54
	Important information on Internet fax.....	55
	How to Internet fax.....	56
	Sending an Internet fax	56
	Receiving E-mail or Internet fax	57
	Additional Internet Fax options	59
	Forwarding received E-mail and fax messages.....	59
	Relay broadcasting.....	59
	TX Verification Mail.....	62
	Error mail	63

9	Security features	64
	Overview	64
	Sending an E-mail securely	65
	Configuration using Web Based Management (web browser)	65
	Sending an E-mail with user authentication	65
	Secure Management using BRAdmin Professional 3 (Windows®).....	67
	To use the BRAdmin Professional 3 utility securely, you need to follow the points below	67
10	Troubleshooting	68
	Overview	68
A	Appendix A	75
	Supported protocols and security features	75
B	Index	76

Network features

Your Brother machine can be shared on a 10/100 MB wired or IEEE 802.11b/g/n wireless Ethernet network using the internal network print server. The print server supports various functions and methods of connection depending on the operating system you are running on a network supporting TCP/IP. The following chart shows what network features and connections are supported by each operating system.

**Note**

Although the Brother machine can be used in both a wired and wireless network, only one connection method can be used at a time.

Operating Systems	Windows® 2000 Windows® XP Windows Vista® Windows® 7	Windows Server® 2003/2008	Mac OS X 10.4.11 - 10.5.x - 10.6.x
Printing	✓	✓	✓
Scanning <i>See Software User's Guide.</i>	✓		✓
PC Fax Send ¹ <i>See Software User's Guide.</i>	✓		✓
PC Fax Receive ¹ <i>See Software User's Guide.</i>	✓		
Network Photo Capture <i>See Software User's Guide.</i>	✓		✓
BRAdmin Light <i>See page 4.</i>	✓	✓	✓
BRAdmin Professional 3 ² <i>See page 7.</i>	✓	✓	
Web BRAdmin ² <i>See page 7.</i>	✓	✓	
Web Based Management (web browser) <i>See page 42.</i>	✓	✓	✓
Remote Setup <i>See Software User's Guide.</i>	✓		✓
Status Monitor <i>See Software User's Guide.</i>	✓		✓
Driver Deployment Wizard	✓	✓	
Vertical Pairing <i>See Network Glossary.</i>	✓ ³		

¹ Black and White only.

² BRAdmin Professional 3 and Web BRAdmin are available as a download from <http://solutions.brother.com/>.

³ Windows® 7 only.

Other Network features

LDAP

The LDAP protocol allows you to search for information such as fax numbers and E-mail addresses from your server. (See *LDAP operation (MFC-J6910DW only)* on page 51.)

Internet fax (Available as a download)

Internet fax (IFAX) allows you to send and receive fax documents using the Internet as the transport mechanism. (See *Internet fax* on page 54.)

In order to use this function, please download the necessary software from our web site, The Brother Solutions Center (<http://solutions.brother.com/>). Before using this function, you have to configure the necessary machine settings by using the machine's control panel. For details, please refer to the user's guide for Internet fax on the web site listed above.

Security

Your Brother machine employs some of the latest network security and encryption protocols available. (See *Security features* on page 64.)

Secure Function Lock 2.0

Secure Function Lock 2.0 increases security by restricting the use of functions. (See *Secure Function Lock 2.0* on page 45.)

How to change your machine's network settings (IP address, Subnet mask and Gateway)

Using the control panel

You can configure your machine for a network using the control panel **Network** menu. (See *Control panel setup* on page 28.)

Using BRAdmin Light utility

The BRAdmin Light utility is designed for initial setup of Brother network connected devices. It also can search for Brother products in a TCP/IP environment, view the status and configure basic network settings, such as IP address.

Installing BRAdmin Light

■ Windows®

- 1 Please make sure that your machine is ON.
- 2 Turn on your computer. Close any applications running before configuration.
- 3 Put the supplied installation CD-ROM into your CD-ROM drive. The opening screen will appear automatically. If the model name screen appears, choose your machine. If the language screen appears, choose your language.
- 4 The CD-ROM main menu will appear. Click **Network Utilities**.
- 5 Click **BRAdmin Light** and follow the on-screen instructions.

■ Macintosh

The BRAdmin Light software will be installed automatically when you install the printer driver. If you have already installed the printer driver, you do not have to install BRAdmin Light again.

Setting the IP address, Subnet Mask and Gateway using BRAdmin Light

Note

- You can download the latest Brother BRAdmin Light utility version from <http://solutions.brother.com/>.
- If you require more advanced printer management, use the latest Brother BRAdmin Professional 3 utility that is available as a download from <http://solutions.brother.com/>. This utility is only available for Windows® users.
- If you are using a firewall function of anti-spyware or antivirus applications, temporarily disable them. Once you are sure that you can print, re-enable the application.
- Node Name: The Node Name appears in the current BRAdmin Light window. The default Node Name of the print server in the machine is "BRNxxxxxxxxxxxx" or "BRWxxxxxxxxxxxx". ("xxxxxxxxxxxx" is your machine's MAC Address / Ethernet Address.)
- The default password for Brother print servers is "access".

1 Start the BRAdmin Light utility.

■ Windows®

Click **start** / **All Programs**¹ / **Brother** / **BRAdmin Light** / **BRAdmin Light**.

¹ **Programs** for Windows® 2000 users

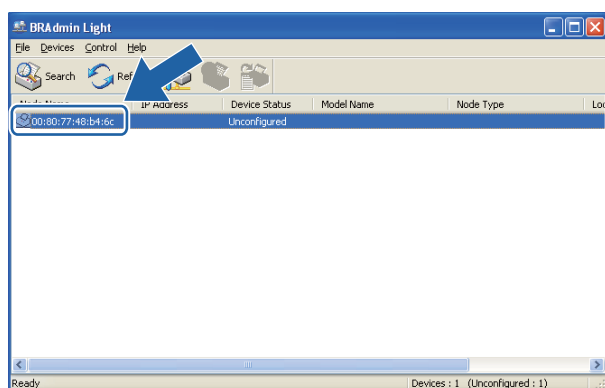
■ Macintosh

Double-click **Macintosh HD** (Startup Disk) / **Library** / **Printers** / **Brother** / **Utilities** / **BRAdmin Light.jar** file.

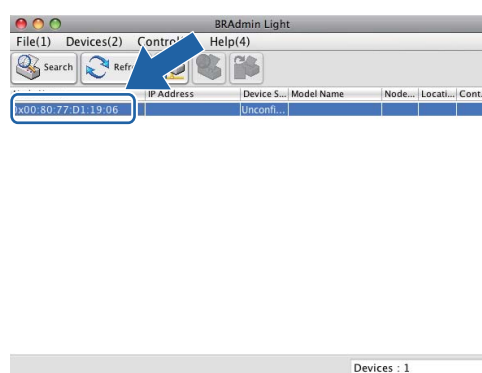
2 BRAdmin Light will search for new devices automatically.

3 Double-click the unconfigured device.

Windows®



Macintosh



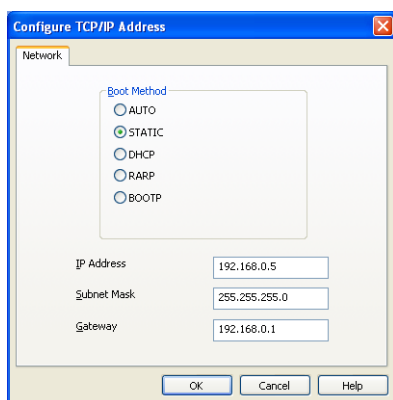


Note

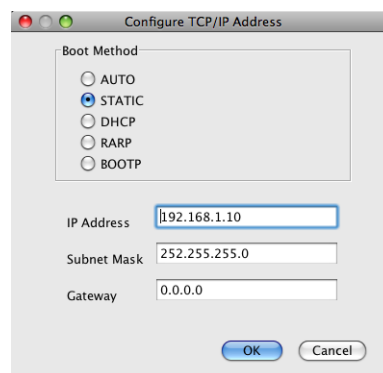
- If the print server is set to its factory default settings (if you don't use a DHCP/BOOTP/RARP server), the device will appear as **Unconfigured** in the BRAdmin Light utility screen.
- You can find the Node Name and MAC Address (Ethernet Address) by printing the Network Configuration List. (See *Printing the Network Configuration List* on page 37 for information on how to print the Network Configuration List on your print server.) You can also find the Node Name and MAC Address from the control panel. (See *Control panel setup* on page 28.)

- 4 Choose **STATIC** from **Boot Method**. Enter the **IP Address**, **Subnet Mask** and **Gateway** (if needed) of your print server.

Windows®



Macintosh



- 5 Click **OK**.
- 6 With the correctly programmed IP address, you will see the Brother print server in the device list.

Other Management Utilities

Your Brother machine has the following management utilities other than the BRAdmin Light utility. You can change your network settings using these utilities.

Web Based Management (web browser)

A standard web browser can be used to change your print server settings using the HTTP (Hyper Text Transfer Protocol). (See *How to configure the machine settings using Web Based Management (web browser)* on page 43.)

BRAdmin Professional 3 utility (Windows®)

BRAdmin Professional 3 is a utility for more advanced management of network connected Brother devices. This utility can search for Brother products on your network and view the device status from an easy to read Explorer style window that changes color identifying the status of each device. You can configure network and device settings along with the ability to update device firmware from a Windows® computer on your LAN. BRAdmin Professional 3 can also log activity of Brother devices on your network and export the log data in an HTML, CSV, TXT or SQL format.

For more information and downloading, visit us at <http://solutions.brother.com/>.



Note

- Please use the latest version of the BRAdmin Professional 3 utility that is available as a download from <http://solutions.brother.com/>. This utility is only available for Windows® users.
- If you are using a firewall function of anti-spyware or antivirus applications, temporarily disable them. Once you are sure that you can print, re-enable the application.
- Node name: The node name appears in the current BRAdmin Professional 3 window. The default Node name is "BRNxxxxxxxxxxx" or "BRWxxxxxxxxxxx". ("xxxxxxxxxxx" is your MAC Address / Ethernet Address.)

Web BRAdmin (Windows®)

Web BRAdmin is a utility for managing network connected Brother devices on your LAN and WAN. This utility can search for Brother products on your network, view its status and configure the network settings. Unlike BRAdmin Professional 3, which is designed for Windows® only, Web BRAdmin is a server based utility that can be accessed from any client PC with a web browser that supports JRE (Java Runtime Environment). By installing the Web BRAdmin server utility on a PC running IIS¹, connect to the Web BRAdmin server, which then communicates with the device itself.

For more information and downloading, visit us at <http://solutions.brother.com/>.

¹ Internet Information Server 4.0 or Internet Information Service 5.0/5.1/6.0/7.0/7.5

Overview

To connect your machine to your wireless network, we recommend you to follow the steps in the *Quick Setup Guide* using WPS or AOSS™ from the control panel menu. By using this method, you can easily connect your machine to your wireless network.

Please read this chapter for more details on how to configure the wireless network settings. For information on TCP/IP settings, see *How to change your machine's network settings (IP address, Subnet mask and Gateway)* on page 4.



Note

- To achieve optimum results with normal every day document printing, place the Brother machine as close to the WLAN access point/router as possible with minimal obstructions. Large objects and walls between the two devices as well as interference from other electronic devices can affect the data transfer speed of your documents.

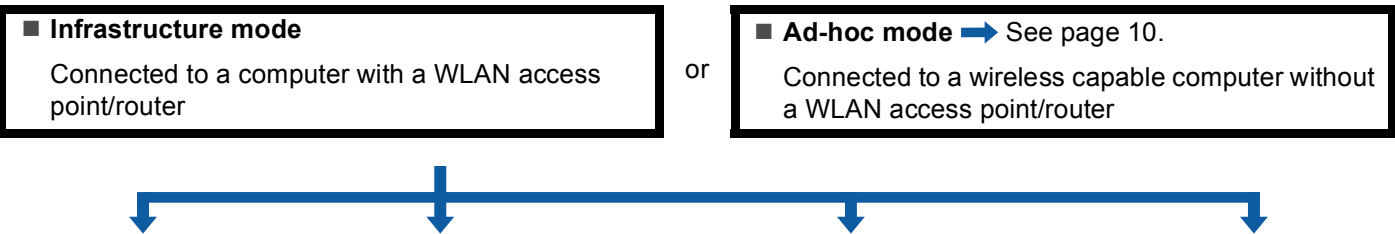
Due to these factors, wireless may not be the best method of connection for all types of documents and applications. If you are printing large files, such as multi-page documents with mixed text and large graphics, you may want to consider choosing wired Ethernet for a faster data transfer, or USB for the fastest throughput speed.

- Although the Brother machine can be used in both a wired and wireless network, only one connection method can be used at a time.
- Before configuring wireless settings, you will need to know your SSID and Network Key.

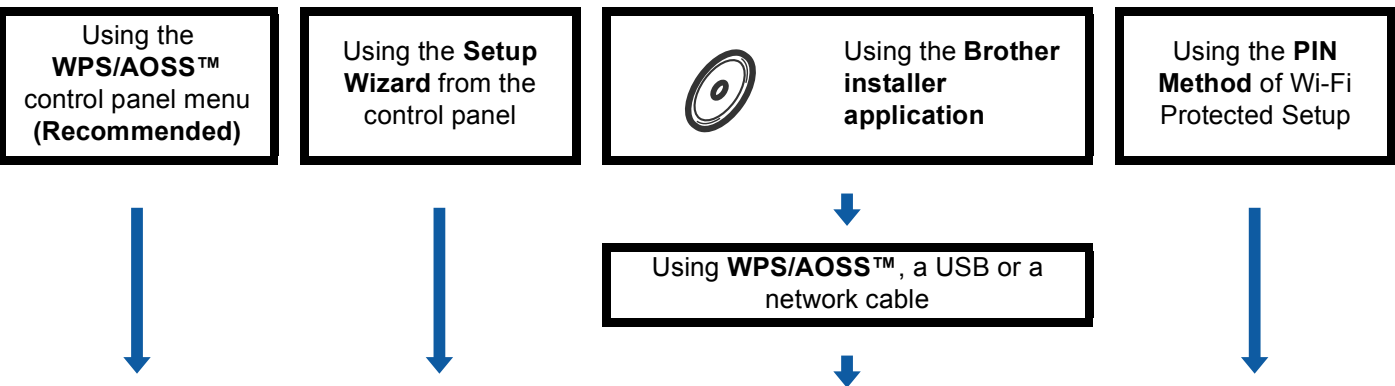
Step by step chart for wireless network configuration

For Infrastructure mode

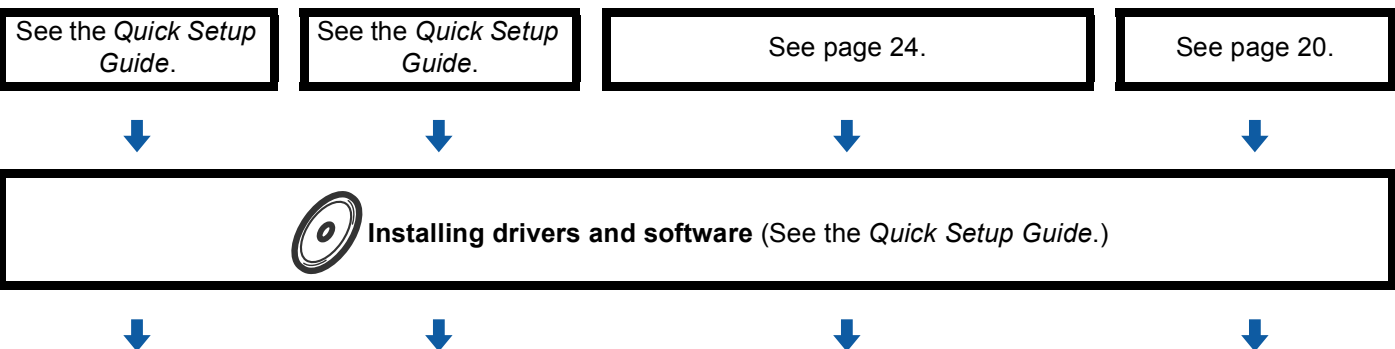
1 Confirm your network environment. (See page 11.)



2 Confirm your wireless network setup method. (See page 12.)



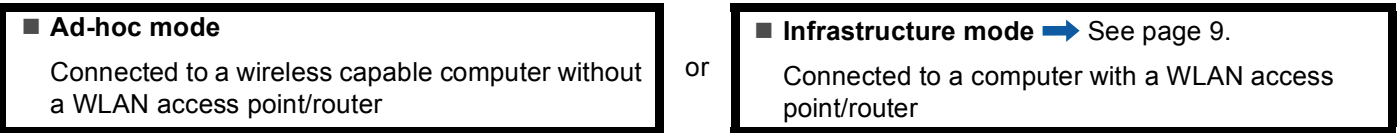
3 Configure your machine for a wireless network. (See page 15.)



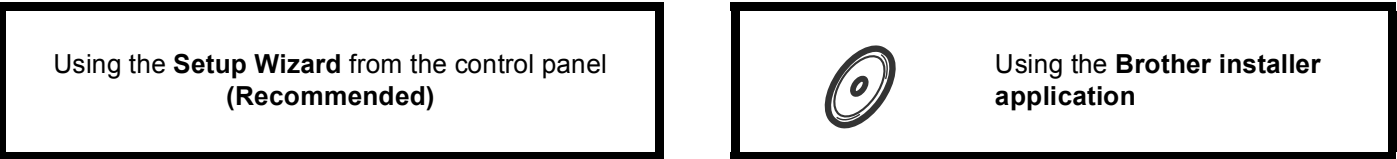
 **Wireless configuration and installing drivers and software have been completed.**

For Ad-hoc mode

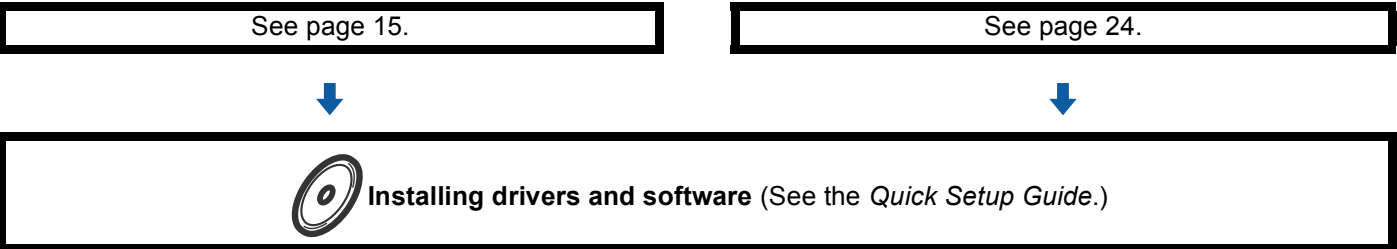
1 Confirm your network environment. (See page 11.)



2 Confirm your wireless network setup method. (See page 12.)



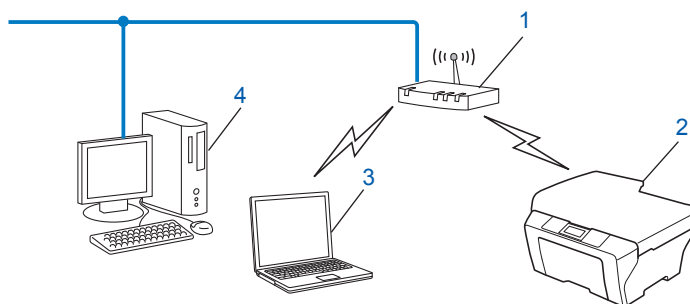
3 Configure your machine for a wireless network. (See page 15.)



OK! Wireless configuration and installing drivers and software have been completed.

Confirm your network environment

Connected to a computer with a WLAN access point/router in the network (Infrastructure mode)



1 WLAN access point/router ¹

¹ If your computer supports Intel® My WiFi Technology (Intel® MWT), you can use your computer as a Wi-Fi Protected Setup supported access point.

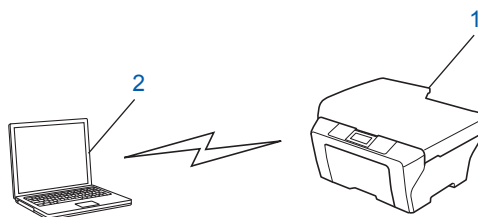
2 Wireless network machine (your machine)

3 Wireless capable computer connected to the WLAN access point/router

4 Wired computer (which is not wireless capable) connected to the WLAN access point/router with an Ethernet cable

Connected to a wireless capable computer without a WLAN access point/router in the network (Ad-hoc mode)

This type of network does not have a central WLAN access point/router. Each wireless client communicates directly with each other. When the Brother wireless machine (your machine) is part of this network, it receives all print jobs directly from the computer sending the print data.



1 Wireless network machine (your machine)

2 Wireless capable computer



Note

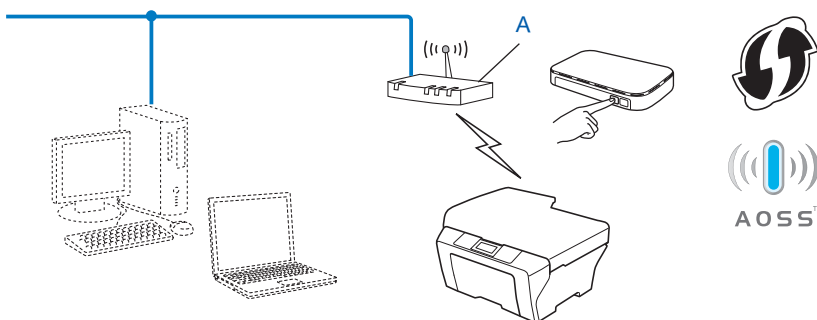
We do not guarantee the wireless network connection with Windows Server® products in Ad-hoc mode.

Confirm your wireless network setup method

There are four methods to configure your wireless network machine. Use the WPS/AOSS™ from the control panel menu (recommended), Setup Wizard from the control panel, the Brother installer application on the installation CD-ROM or the PIN Method of Wi-Fi Protected Setup. The setup process will be different depending on your network environment.

Configuration using the WPS/AOSS™ control panel menu (Infrastructure mode only) (Recommended)

We recommend that you use WPS or AOSS™ from the control panel menu to configure your wireless network settings if your WLAN access point/router (A) supports either Wi-Fi Protected Setup (PBC¹) or AOSS™.



¹ Push Button Configuration

Configuration using the machine's control panel Setup Wizard to configure your wireless network machine

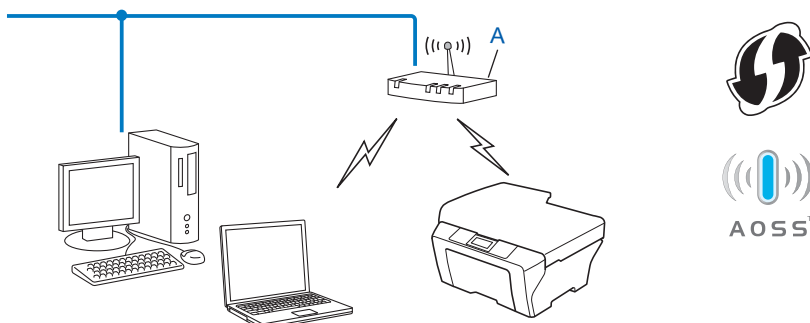
You can use the machine's control panel to configure your wireless network settings. By using the control panel Setup Wizard function, you can easily connect your Brother machine to your wireless network. **You must know your wireless network settings before you proceed with this installation.**

Configuration using the Brother installer application on the installation CD-ROM to configure your wireless network machine

You can also use the Brother installer application on the installation CD-ROM we have provided with the machine. You will be guided by the on-screen instructions until you are able to use your Brother wireless network machine. **You must know your wireless network settings before you proceed with this installation.**

Configuration using the Automatic Wireless mode

If your WLAN access point/router (A) supports either Wi-Fi Protected Setup (PBC¹) or AOSS™, you can configure the machine easily without knowing your wireless network settings using the Brother installer application.

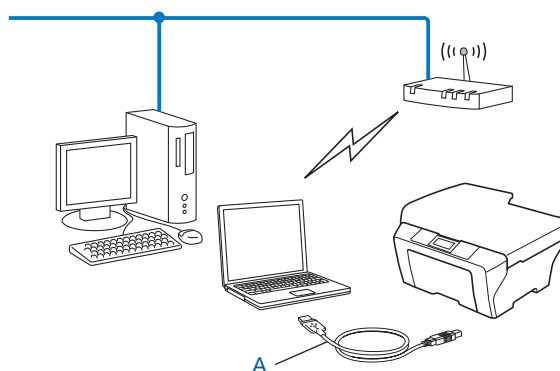


¹ Push Button Configuration

Configuration temporarily using a USB or network cable

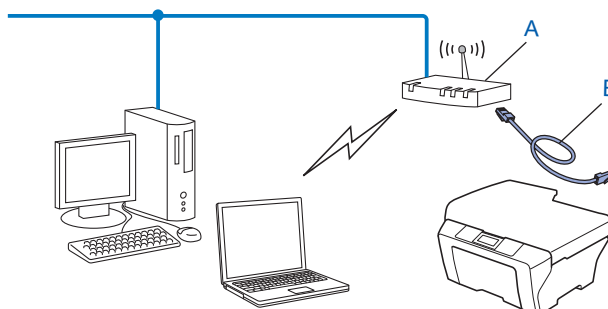
You can temporarily use a USB cable or network cable when you configure your Brother machine in this method. The USB and network cables are not standard accessories included with the machine.

- You can remotely configure the machine from the computer on the network using a USB cable (A)¹.



¹ You can configure the wireless settings of the machine using a USB cable temporarily connected to a wired or wireless computer.

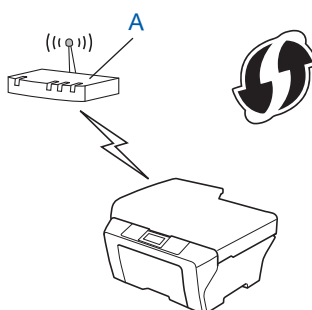
- If there is an Ethernet Hub or Router in the same network as the WLAN access point (A) of your machine, you can temporarily connect the Hub or Router to the machine using a network cable (B). You can then remotely configure the machine from a computer on the network.



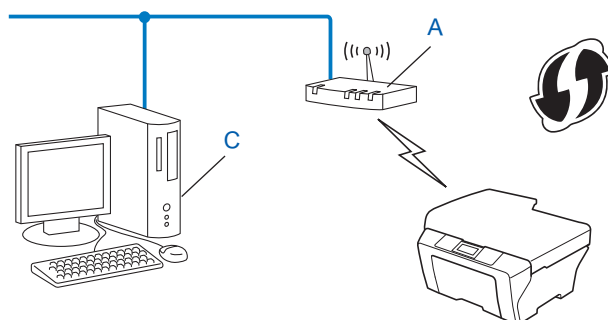
Configuration using the PIN Method of Wi-Fi Protected Setup (Infrastructure mode only)

If your WLAN access point/router (A) supports Wi-Fi Protected Setup, you can also configure using the PIN Method of Wi-Fi Protected Setup.

- Connection when the WLAN access point/router (A) doubles as a Registrar ¹.



- Connection when another device (C), such as a computer is used as a Registrar ¹.



¹ The Registrar is a device that manages the wireless LAN.

Configuring your machine for a wireless network (for Infrastructure mode and Ad-hoc mode)

! IMPORTANT

- If you are going to connect your Brother machine to your network, we recommend that you contact your system administrator prior to installation. **You must know your wireless network settings before you proceed with this installation.**
- If you have previously configured the wireless settings of the machine, you must reset the network LAN settings before you can configure the wireless settings again.

Press **Menu**, **▲** or **▼** to choose `Network`, press **OK**. Press **▲** or **▼** to choose `Network Reset`, press **OK**. Press **1** to reset and then press **1** to accept the change. For Touchscreen models, press `MENU`, `Network`. Press **▲** or **▼** to display `Network Reset`, and press `Network Reset`. Press `Yes` to reset and then press `Yes` for 2 seconds to confirm. The machine will restart automatically.

Using WPS or AOSS™ from the control panel menu to configure your machine for a wireless network

If your WLAN access point/router supports either Wi-Fi Protected Setup (PBC ¹) or AOSS™ (one-push method), you can configure the machine easily without a computer. Your Brother machine has the WPS/AOSS™ menu available from the control panel. See the *Quick Setup Guide* for more information.

¹ Push Button Configuration

Using the Setup Wizard from the control panel

You can configure your Brother machine by using the `Setup Wizard` function. This is located in the `Network` menu on the machine's control panel.

- If you are configuring your machine for a smaller wireless network, such as your home environment:
 - To configure your machine for an existing wireless network using the SSID and Network Key (if required), see the *Quick Setup Guide*.
 - If your WLAN access point/router is set to not broadcast the SSID name, see *Configuring your machine when the SSID is not broadcast* on page 16.
- If you are configuring your machine using Wi-Fi Protected Setup (PIN Method), see *Using the PIN Method of Wi-Fi Protected Setup* on page 20.

Configuring your machine when the SSID is not broadcast

- 1 Before configuring your machine we recommend you write down your wireless network settings. You will need this information before you continue with the configuration.

Check and record the current wireless network settings.

SSID (Network Name):

Communication Mode	Authentication method	Encryption mode	Network key
Infrastructure	Open system	WEP	
		NONE	—
	Shared key	WEP	
	WPA/WPA2-PSK	AES	
		TKIP ¹	
Ad-hoc	Open system	WEP	
		NONE	—

¹ TKIP is supported for WPA-PSK only.

For example:

SSID (Network Name):
HELLO

Communication Mode	Authentication method	Encryption mode	Network key
Infrastructure	WPA2-PSK	AES	12345678



Note

If your router uses WEP encryption, enter the key used as the first WEP key. Your Brother machine supports the use of the first WEP key only.

- 2 Press **Menu**.
- 3 Press **▲** or **▼** to choose `Network`.
Press **OK**.
- 4 Press **▲** or **▼** to choose `WLAN`.
Press **OK**.
- 5 Press **▲** or **▼** to choose `Setup Wizard`.
Press **OK**.
- 6 When `Network I/F switched to Wireless.` is displayed, press **OK** to accept.
This will start the wireless setup wizard.
To cancel, press **Stop/Exit**.

- 7 The machine will search for your network and display a list of available SSIDs.
Choose <New SSID> using ▲ or ▼.
Press **OK**.
- 8 Enter the SSID name. (For information how to enter text, see the *Quick Setup Guide*.)
Press **OK**.
- 9 Using ▲ or ▼, choose *Ad-hoc* or *Infrastructure* when instructed.
Press **OK**.
Do one of the following:
If you chose *Ad-hoc*, go to step 11.
If you chose *Infrastructure*, go to step 10.
- 10 Choose the Authentication method using ▲ or ▼, and press **OK**.
Do one of the following:
If you chose *Open System*, go to step 11.
If you chose *Shared Key*, go to step 12.
If you chose *WPA/WPA2-PSK*, go to step 13.
- 11 Choose the Encryption type *None* or *WEP* using ▲ or ▼, and press **OK**.
Do one of the following:
If you chose *None*, go to step 15.
If you chose *WEP*, go to step 12.
- 12 Enter the WEP key you wrote down in step 1 on page 16. Press **OK**. Go to step 15. (For information how to enter text, see the *Quick Setup Guide*.)
- 13 Choose the Encryption type, *TKIP* or *AES* using ▲ or ▼. Press **OK**. Go to step 14.
- 14 Enter the WPA key you wrote down in step 1 on page 16 and press **OK**. Go to step 15. (For information how to enter text, see the *Quick Setup Guide*.)
- 15 To apply the settings, choose *Yes*. To cancel, choose *No*.
Do one of the following:
If you chose *Yes*, go to step 16.
If you chose *No*, go back to step 7.
- 16 The machine starts to connect to the wireless device you have chosen.
- 17 A connection result message appears for 60 seconds on the LCD and a wireless LAN report will automatically be printed. If the connection failed, check the error code on the printed report and refer to *Troubleshooting* in the *Quick Setup Guide*.



(Windows®)

You have completed the wireless network setup. If you would like to continue installing drivers and software necessary for operating your device, please choose Initial Installation/Install MFL-Pro Suite from the installation CD-ROM menu.

(Macintosh)

You have completed the wireless network setup. If you would like to continue installing drivers and software necessary for operating your device, please double-click Start Here OSX in the installation CD-ROM.

For Touchscreen models

- 1 Before configuring your machine we recommend you write down your wireless network settings. You will need this information before you continue with the configuration.

Check and record the current wireless network settings.

SSID (Network Name):

Communication Mode	Authentication method	Encryption mode	Network key
Infrastructure	Open system	WEP	
		NONE	—
	Shared key	WEP	
	WPA/WPA2-PSK	AES	
		TKIP ¹	
Ad-hoc	Open system	WEP	
		NONE	—

¹ TKIP is supported for WPA-PSK only.

For example:

SSID (Network Name):
HELLO

Communication Mode	Authentication method	Encryption mode	Network key
Infrastructure	WPA2-PSK	AES	12345678

**Note**

If your router uses WEP encryption, enter the key used as the first WEP key. Your Brother machine supports the use of the first WEP key only.

- 2 Press **MENU**.
- 3 Press **Network**.
- 4 Press **WLAN**.
- 5 Press **Setup Wizard**.
- 6 When **Switch Network interface to wireless?** is displayed, press **Yes** to accept. This will start the wireless setup wizard. To cancel, press **Stop/Exit**.
- 7 The machine will search for your network and display a list of available SSIDs. Press **▲** or **▼** to display **<New SSID>**, and press **<New SSID>**.

- 8 Enter the SSID name. (For information how to enter text, see the *Quick Setup Guide*.) Press **OK**.
- 9 Press **Ad-hoc** or **Infrastructure** when instructed.
Do one of the following:
If you chose **Ad-hoc**, go to step 11.
If you chose **Infrastructure**, go to step 10.
- 10 Choose and press the Authentication method.
Do one of the following:
If you chose **Open System**, go to step 11.
If you chose **Shared Key**, go to step 12.
If you chose **WPA/WPA2-PSK**, go to step 13.
- 11 Choose and press the Encryption type **None** or **WEP**.
Do one of the following:
If you chose **None**, go to step 15.
If you chose **WEP**, go to step 12.
- 12 Enter the WEP key you wrote down in step 1 on page 18. Press **OK**. Go to step 15. (For information how to enter text, see the *Quick Setup Guide*.)
- 13 Choose and press the Encryption type, **TKIP** or **AES**. Go to step 14.
- 14 Enter the WPA key you wrote down in step 1 on page 18 and press **OK**. Go to step 15. (For information how to enter text, see the *Quick Setup Guide*.)
- 15 To apply the settings, press **Yes**. To cancel, press **No**.
Do one of the following:
If you chose **Yes**, go to step 16.
If you chose **No**, go back to step 7.
- 16 The machine starts to connect to the wireless device you have chosen.
- 17 A connection result message appears for 60 seconds on the LCD and a wireless LAN report will automatically be printed. If the connection failed, check the error code on the printed report and refer to *Troubleshooting* in the *Quick Setup Guide*.



(Windows®)

You have completed the wireless network setup. If you would like to continue installing drivers and software necessary for operating your device, please choose Initial Installation/Install MFL-Pro Suite from the installation CD-ROM menu.

(Macintosh)

You have completed the wireless network setup. If you would like to continue installing drivers and software necessary for operating your device, please double-click Start Here OSX in the installation CD-ROM.

Using the Brother automatic installer application on the installation CD-ROM to configure your machine for a wireless network

For installation, see *Wireless configuration using the Brother installer application* on page 24.

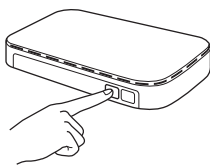
Using the PIN Method of Wi-Fi Protected Setup

If your WLAN access point/router supports Wi-Fi Protected Setup (PIN Method), you can configure the machine easily. The PIN (Personal Identification Number) Method is one of the connection methods developed by the Wi-Fi Alliance®. By inputting a PIN which is created by an Enrollee (your machine) to the Registrar (a device that manages the wireless LAN), you can setup the wireless network and security settings. See the User's Guide for your WLAN access point/router for instructions on how to access the Wi-Fi Protected Setup mode.



Note

Routers or access points that support Wi-Fi Protected Setup have a symbol as shown below.



- 1 Press **Menu**.
- 2 Press **▲** or **▼** to choose `Network`.
Press **OK**.
- 3 Press **▲** or **▼** to choose `WLAN`.
Press **OK**.
- 4 Press **▲** or **▼** to choose `WPS w/PIN Code`.
Press **OK**.
- 5 When `Network I/F switched to Wireless.` is displayed, press **OK** to accept.
This will start the wireless setup wizard.
To cancel, press **Stop/Exit**.
- 6 The LCD will show an 8 digit PIN and the machine begins searching for a WLAN access point/router for up to 5 minutes.

- 7 Using a computer that is on the network, type “http://access point’s IP address/” into your browser. (Where “access point’s IP address” is the IP address of the device that is used as the Registrar ¹.) Go to the WPS (Wi-Fi Protected Setup) setting page and input the PIN which the LCD shows in 6 to the Registrar and follow the on-screen instructions.

¹ The Registrar is normally the WLAN access point/router.



Note



The setting page is different, depending on the brand of WLAN access point/router. See the instruction manual that came with your WLAN access point/router.

If you are using your Windows Vista® or Windows® 7 computer as a Registrar, perform the following instructions.



Note

To use a Windows Vista® or Windows® 7 computer as a Registrar, you need to register it to your network in advance. See the instruction manual that came with your WLAN access point/router.

- 1 (Windows Vista®)
Click , **Network**, and then **Add a wireless device**.
(Windows® 7)
Click , **Control Panel**, **Network and Internet**, and then **Add a wireless device to the network**.
- 2 Choose your machine and click **Next**.
- 3 Input the PIN from the printed page and then click **Next**.
- 4 Choose your network that you want to connect to, and then click **Next**.
- 5 Click **Close**.

- 8 A connection result message appears for 60 seconds on the LCD and a wireless LAN report will automatically be printed. If the connection failed, check the error code on the printed report and refer to *Troubleshooting* in the *Quick Setup Guide*.



(Windows®)

You have completed the wireless network setup. If you would like to continue installing drivers and software necessary for operating your device, please choose Initial Installation/Install MFL-Pro Suite from the installation CD-ROM menu.

(Macintosh)

You have completed the wireless network setup. If you would like to continue installing drivers and software necessary for operating your device, please double-click Start Here OSX in the installation CD-ROM.

For Touchscreen models

- 1 Press **MENU**.
- 2 Press **Network**.
- 3 Press **WLAN**.
- 4 Press **▲** or **▼** to display **WPS w/PIN Code**, and press **WPS w/PIN Code**.
- 5 When **Switch Network interface to wireless?** is displayed, press **Yes** to accept.
This will start the wireless setup wizard.
To cancel, press **Stop/Exit**.
- 6 The LCD will show an 8 digit PIN and the machine starts searching for a WLAN access point/router for 5 minutes.
- 7 Using a computer that is on the network, type “http://access point’s IP address/” into your browser.
(Where “access point’s IP address” is the IP address of the device that is used as the Registrar ¹.) Go to the WPS (Wi-Fi Protected Setup) setting page and input the PIN which the LCD shows in 6 to the Registrar and follow the on-screen instructions.

¹ The Registrar is normally the WLAN access point/router.



Note



The setting page is different, depending on the brand of WLAN access point/router. See the instruction manual that came with your WLAN access point/router.

If you are using your Windows Vista[®] or Windows[®] 7 computer as a Registrar, perform the following instructions.



Note

To use a Windows Vista[®] or Windows[®] 7 computer as a Registrar, you need to register it to your network in advance. See the instruction manual that came with your WLAN access point/router.

- 1 (Windows Vista[®])
Click , **Network**, and then **Add a wireless device**.
(Windows[®] 7)
Click , **Control Panel**, **Network and Internet**, and then **Add a wireless device to the network**.
- 2 Choose your machine and click **Next**.
- 3 Input the PIN from the printed page and then click **Next**.
- 4 Choose your network that you want to connect to, and then click **Next**.
- 5 Click **Close**.

- 8 A connection result message appears for 60 seconds on the LCD and a wireless LAN report will automatically be printed. If the connection failed, check the error code on the printed report and refer to *Troubleshooting* in the *Quick Setup Guide*.



(Windows®)

You have completed the wireless network setup. If you would like to continue installing drivers and software necessary for operating your device, please choose Initial Installation/Install MFL-Pro Suite from the installation CD-ROM menu.

(Macintosh)

You have completed the wireless network setup. If you would like to continue installing drivers and software necessary for operating your device, please double-click Start Here OSX in the installation CD-ROM.

Wireless configuration using the Brother installer application

Before configuring the wireless settings

! IMPORTANT

- The following instructions will install your Brother machine in a network environment using the Brother installer application found on the installation CD-ROM we have provided with the machine.
- You can also setup your Brother machine using WPS or AOSS™ from the control panel which we recommend. You can find instructions in the supplied *Quick Setup Guide*.
- If you have previously configured the wireless settings of the machine, you must reset the network LAN settings before you can configure the wireless settings again.

Press **Menu**, **▲** or **▼** to choose **Network**, press **OK**. Press **▲** or **▼** to choose **Network Reset**, press **OK**. Press **1** to reset and then press **1** to accept the change. For Touchscreen models, press **MENU**, **Network**. Press **▲** or **▼** to display **Network Reset**, and press **Network Reset**. Press **Yes** to reset and then press **Yes** for 2 seconds to confirm. The machine will restart automatically.

- If you are using a firewall function of anti-spyware or antivirus applications, temporarily disable them. Once you are sure that you can print please re-enable your firewall.
- You need to temporarily use a USB cable (not included) or Ethernet cable (not included) during configuration.
- **You must know your wireless network settings before you proceed with this installation.**

If you are going to connect your Brother machine to your network, we recommend that you contact your system administrator prior to installation.
- If your router uses WEP encryption, enter the key used as the first WEP key. Your Brother machine supports the use of the first WEP key only.

Configure the wireless settings

- 1 Before configuring your machine we recommend you write down the SSID and Network Key (if required) for your wireless network. You will need this information before you continue with the configuration.

Item	Record the current wireless network settings
SSID (Network Name):	
Network Key	

- 2 Turn on your computer.
- 3 Start the Brother installer application.

■ Windows®

- 1 Put the supplied installation CD-ROM into your CD-ROM drive. The opening screen will appear automatically. If the model name screen appears, choose your machine. If the language screen appears, choose your language.
- 2 The CD-ROM main menu will appear. Click **Initial Installation**.



Note

- If the Brother screen does not appear automatically, go to **My Computer (Computer)**, double-click the CD-ROM icon, and then double-click **start.exe**.
- The screen on your machine may vary depending on your region.

- 3 Click **Wireless LAN Setup Wizard**.

■ Macintosh

- 1 Put the supplied installation CD-ROM into your CD-ROM drive. Double-click the **MFL_PRO Suite** icon on your desktop.
- 2 Double-click **Utilities**.
- 3 Double-click the **Wireless Device Setup Wizard**.

- 4 Choose **Yes, my Access Point supports WPS or AOSS and I want to use them.** or **No** and then click **Next**.

When you choose **No**, you have the ability to configure the wireless setting in four different ways.

- Using a USB cable temporarily
- Using an Ethernet (LAN) cable temporarily
- Configuring through the control panel manually
- Using Ad-hoc mode




Note

For Ad-hoc setup users:

- If a message to restart your computer appears after the wireless settings have been changed, restart your computer and then go back to step ③.
- You can temporarily change the wireless settings on your computer.

(Windows Vista® or Windows® 7)

- 1 Click  and then **Control Panel**.
- 2 Click **Network and Internet** and then **Network and Sharing Center** icon.
- 3 Click **Connect to a network**.
- 4 You can see the SSID of the wireless Brother machine in the list. Choose **SETUP** and click **Connect**.
- 5 (For Windows Vista® only)
Click **Connect Anyway** and then **Close**.
- 6 (Windows Vista®)
Click **View status** of **Wireless Network Connection (SETUP)**.
(Windows® 7)
Click **Wireless Network Connection (SETUP)**.
- 7 Click **Details...** and check the **Network Connection Details**. It may take a few minutes to change from 0.0.0.0 to the 169.254.x.x IP address to be shown on screen (where x.x. are numbers between 1 and 254).

(Windows® XP SP2 or greater)

- 1 Click **start** and then **Control Panel**.
- 2 Click the **Network and Internet Connections** icon.
- 3 Click **Network Connections** icon.
- 4 Choose and right click **Wireless Network Connection**. Click **View Available Wireless Networks**.
- 5 You can see the Brother wireless machine in the list. Choose **SETUP** and click **Connect**.
- 6 Check the **Wireless Network Connection** status. It may take a few minutes to change from 0.0.0.0. to the 169.254.x.x IP address to be shown on screen (where x.x. are numbers between 1 and 254).

(Macintosh)

- 1 Click the AirPort status icon in the menu bar.
- 2 Select **SETUP** from the pop-up menu.
- 3 Your wireless network is connected successfully.

- 5 Follow the on-screen instructions to configure the wireless settings.



(Windows®)

You have completed the wireless network setup. If you would like to continue installing drivers and software necessary for operating your device, please choose Initial Installation/Install MFL-Pro Suite from the installation CD-ROM menu.

(Macintosh)

You have completed the wireless network setup. If you would like to continue installing drivers and software necessary for operating your device, please double-click Start Here OSX in the installation CD-ROM.



Note

If your wireless settings fail, the Wireless Device Setup Wizard will appear during the installation of **MFL-Pro Suite**. Confirm your settings by following the on-screen instructions.

Network menu

The **Network** menu selections of the control panel allow you to set up the Brother machine for your network configuration. Press **Menu** or **MENU**, then press **▲** or **▼** to choose **Network**. Proceed to the menu selection you wish to configure. (See *Function table and default factory settings* on page 39.)

Please note that the machine is supplied with the BAdmin Light utility, Web Based Management or Remote Setup applications, which also can be used to configure many aspects of the network. (See *Other Management Utilities* on page 7.)

TCP/IP

If you connect the machine with an Ethernet cable to your network, use the **Wired LAN** menu selections. If you connect the machine to a wireless Ethernet network, use the **WLAN** menu selections.

BOOT Method

This selection controls how the machine obtains an IP address.

Auto mode

In this mode the machine will scan the network for a DHCP server. If it can find one, and if the DHCP server is configured to allocate an IP address to the machine, then the IP address supplied by the DHCP server will be used. If no DHCP server is available, then the machine will scan for a BOOTP server. If a BOOTP server is available, and it is configured correctly, the machine will take its IP address from the BOOTP server. If a BOOTP server is not available, the machine will scan for a RARP server. If a RARP server also does not answer, the IP Address is set using the APIPA protocol. After the machine is initially powered ON, it may take a few minutes for the machine to scan the network for a server.

Static mode

In this mode the machine's IP address must be manually assigned. Once entered the IP address is locked to the assigned address.



Note

If you do not want your print server configured via DHCP, BOOTP or RARP, you must set the **BOOT Method** to **Static** so that the print server has a static IP address. This will prevent the print server from trying to obtain an IP address from any of these systems. To change the **BOOT Method**, use the machine's control panel, BAdmin Light utility, Web Based Management or Remote Setup.

IP Address

This field displays the current IP address of the machine. If you have chosen a `BOOT Method of Static`, enter the IP address that you wish to assign to the machine (check with your network administrator for the IP address to use). If you have chosen a method other than `Static`, the machine will attempt to determine its IP address using the DHCP or BOOTP protocols. The default IP address of your machine will probably be incompatible with the IP address numbering scheme of your network. We recommend that you contact your network administrator for an IP address for the network the unit will be connected on.

Subnet Mask

This field displays the current subnet mask used by the machine. If you are not using DHCP or BOOTP to obtain the subnet mask, enter the desired subnet mask. Check with your network administrator for the subnet mask to use.

Gateway

This field displays the current gateway or router address used by the machine. If you are not using DHCP or BOOTP to obtain the gateway or router address, enter the address you wish to assign. If you do not have a gateway or router, leave this field blank. Check with your network administrator if you are unsure.

Node Name

You can register the machine name on the Network. This name is often referred to as a NetBIOS name; it will be the name that is registered by the WINS server on your network. Brother recommends the name `BRNxxxxxxxxxxxx` for a wired network or `BRWxxxxxxxxxxxx` for a wireless network (where `xxxxxxxxxxxx` is your machine's Ethernet address) (up to 15 characters).

WINS Config

This selection controls how the machine obtains the IP address of the WINS server.

Auto

Automatically uses a DHCP request to determine the IP addresses for the primary and secondary WINS servers. You must set the `BOOT Method` to `Auto` or `DHCP` for this feature to work.

Static

Uses a specified IP address for the primary and secondary WINS servers.

WINS Server

Primary WINS Server IP Address

This field specifies the IP address of the primary WINS (Windows® Internet Name Service) server. If set to a non-zero value, the machine will contact this server to register its name with the Windows® Internet Name Service.

Secondary WINS Server IP Address

This field specifies the IP address of the secondary WINS server. It is used as a backup to the Primary WINS server address. If the Primary server is unavailable, the machine still can register itself with a secondary server. If set to a non-zero value, the machine will contact this server to register its name with the Windows® Internet Name Service. If you have a primary WINS server, but no secondary WINS server, simply leave this field blank.

DNS Server

Primary DNS Server IP Address

This field specifies the IP address of the primary DNS (Domain Name System) server.

Secondary DNS Server IP Address

This field specifies the IP address of the secondary DNS server. It is used as a backup to the Primary DNS server address. If the Primary server is unavailable, the machine will contact the Secondary DNS server.

APIPA

The setting of `On` will cause the print server to automatically allocate a Link-Local IP address in the range (169.254.1.0 - 169.254.254.255) when the print server cannot obtain an IP address through the `BOOT Method` you have set (see *BOOT Method* on page 28). Choosing `Off` means the IP address doesn't change, when the print server cannot obtain an IP address through the `BOOT Method` you have set.

IPv6

This machine is compatible with IPv6, the next generation Internet protocol. If you want to use the IPv6 protocol, choose `On`. The default setting for IPv6 is `Off`. For more information on the IPv6 protocol, visit <http://solutions.brother.com/>.



Note

- If you set IPv6 to `On`, turn off the power switch and then turn it back on to enable this protocol.
- After you choose IPv6 `On`, this setting will be applied to both the wired and wireless LAN interface.

Setup Wizard

The `Setup Wizard` guides you through the wireless network configuration. For more information, see the *Quick Setup Guide* or *Using the Setup Wizard from the control panel* on page 15.

WPS/AOSS™

If your WLAN access point/router supports either Wi-Fi Protected Setup (PBC¹) or AOSS™, you can configure the machine easily without knowing your wireless network settings. (See the *Quick Setup Guide* or *Using WPS or AOSS™ from the control panel menu to configure your machine for a wireless network* on page 15.)

¹ Push Button Configuration

WPS w/PIN Code

If your WLAN access point/router supports Wi-Fi Protected Setup (PIN Method), you can configure the machine easily without a computer. (See *Using the PIN Method of Wi-Fi Protected Setup* on page 20.)

WLAN Status

Status

This field displays the current wireless network status.

Signal

This field displays the current wireless network signal strength.

SSID

This field displays the current wireless network SSID. The display shows up to 32 characters of the SSID name.

Comm.Mode

This field displays the current wireless network communication mode.

Ethernet

Ethernet link mode. Auto allows the print server to operate in 100BASE-TX full or half duplex, or in 10BASE-T full or half duplex mode by auto negotiation.



Note

If you set this value incorrectly, you may not be able to communicate with your print server.

MAC Address

The MAC address is a unique number assigned for the machine's network interface. You can check your machine's MAC address from the control panel.

E-mail / IFAX (Available when IFAX is downloaded)

This menu has five selections: Mail Address, Setup Server, Setup Mail RX, Setup Mail TX and Setup Relay. As this section requires you to enter a lot of text characters, you may find that it is more convenient to use Web Based Management and your favorite web browser to configure these settings (see *Web Based Management* on page 42). These settings must be configured for the IFAX feature to work. (For more details about Internet fax, see *Internet fax* on page 54.)

You can also access the character you want by repeatedly pressing the appropriate number key using the machine's control panel. (For entering text, see the *Quick Setup Guide*.)

Mail Address

You can set your machine's E-mail address.

Setup Server

SMTP Server

This field displays the node name or IP address of an SMTP mail server (outgoing E-mail server) on your network.

(Ex, "mailhost.brothermail.net" or "192.000.000.001")

SMTP Port

This field displays the SMTP port number (for outgoing E-mails) on your network.

Auth. for SMTP

You can specify the security method for E-mail notification. (For details on the security methods for E-mail notification, see *Sending an E-mail securely* on page 65.)

POP3 Server

This field displays the node name or IP address of the POP3 server (incoming E-mail server) used by the Brother machine. This address is necessary for the Internet fax features to function correctly.

(Ex, "mailhost.brothermail.net" or "192.000.000.001")

POP3 Port

This field displays the POP3 port number (for incoming E-mails) used by the Brother machine.

Mailbox Name

You can specify a mailbox name on the POP3 server where the Internet print jobs are to be retrieved.

Mailbox Pwd

You can specify the password for the POP3 server account where the Internet print jobs are to be retrieved.



Note

To set for no password, enter a single space.

APOP

You can enable or disable the APOP (Authenticated Post Office Protocol).

Setup Mail RX

Auto Polling

When set to On, the machine automatically checks the POP3 server for new messages.

Poll Frequency

Sets the interval for checking for new messages on the POP3 server (default is 10Min(s)).

For Touchscreen models, you can choose the interval from

1 Min/3 Mins/5 Mins/10 Mins/30 Mins/60 Mins, if Auto Polling is set to On.

Header

This selection allows the contents of the mail header to be printed when the received message is printed.

Del Error Mail

When set to On, the machine automatically deletes error mails that the machine cannot receive from the POP server.

Notification

The notification feature allows a confirmation of receipt message to be transmitted to the sending station when the Internet Fax has been received.

This feature only works on Internet Fax machines that support the “MDN” specification.

Setup Mail TX

Sender Subject

This field displays the subject that is attached to the Internet fax data being sent from the Brother machine to a computer (default is “Internet Fax Job”).

Size Limit

Some E-mail servers do not allow you to send large E-mail documents (the System Administrator will often place a limit on the maximum E-mail size). With this function enabled, the machine will display

Out of Memory when trying to send E-mail documents over 1 Mbyte in size. The document will not be sent and an error report will be printed. The document you are sending should be separated into smaller documents that will be accepted by the mail server. (For your information, a 42 page document based on the ITU-T Test Chart #1 test chart is approximately 1 Mbyte in size.)

Notification

The notification feature allows a confirmation of receipt message to be transmitted to the sending station when the Internet Fax has been received.

This feature only works on Internet Fax machines that support the “MDN” specification.

Setup Relay

Rly Broadcast

This function allows the machine to receive a document over the Internet, and then relay it to other fax machines through conventional analog landlines.

Relay Domain

You can register the Domain Names (Max. 5) that are allowed to request a Relay Broadcast.

Relay Report

A Relay Broadcast Report can be printed at the machine that will act as a Relay Station for all Relay Broadcasts.

Its primary function is to print reports of any relayed broadcasts that have been sent through the machine. Please note: In order to use this function, you must assign the relay domain in the “Trusted Domains” section of the Relay function settings.



Note

For more information on Relay Broadcast, see *Relay broadcasting* on page 59.

5


Time Zone

This field displays your country time zone. The time shown is the time difference between your country and Greenwich Mean Time. For example, the Time Zone for Eastern Time in the USA and Canada is UTC-05:00.

Windows® Time Zone setting

You can see the time difference for your country by using the Time Zone setting in Windows®.

- 1 For Windows Vista® or Windows® 7:

Click the  button, **Control Panel, Clock, Language, and Region, Date and Time**, and then **Change time zone**.

For Windows® XP:

Click the **start** button, **Control Panel, Date, Time, Language, and Regional Options, Date and Time**, and then select **Time Zone**.

For Windows® 2000:

Click the **Start** button, **Settings, Control Panel, Date/Time**, and then select **Time Zone**.

- 2 Change the date and time. Verify your time zone settings from the pull-down menu (this menu displays the time difference from GMT).

Network I/F

You can choose the network connection type, wired network connection or wireless network connection. If you want to use the wired network connection, choose `Wired LAN`, and if you want to use the wireless network connection, choose `WLAN`. You can only have one network connection type active at a time.

LDAP (MFC-J6910DW only)

You can set the LDAP protocol to On or Off.

For more details about LDAP, see *LDAP operation (MFC-J6910DW only)* on page 51.



Note

The LDAP protocol is not supported for China.

Restoring the network settings to factory default

You can reset the print server back to its default factory settings (resetting all information such as the password and IP address information).



Note

- This function restores all wired and wireless network settings to the factory default.
- You can also reset the print server back to its factory default settings using the BRAdmin applications or Web Based Management. (For more information, see *Other Management Utilities* on page 7.)

- 1 Press **Menu**.
- 2 Press **▲** or **▼** to choose `Network`. Press **OK**.
- 3 Press **▲** or **▼** to choose `Network Reset`. Press **OK**.
- 4 Press **1** for Reset.
- 5 Press **1** for Reboot.
- 6 The machine will re-start.

For Touchscreen models

- 1 Press `MENU`.
- 2 Press `Network`.
- 3 Press **▲** or **▼** to display `Network Reset` and then press `Network Reset`.
- 4 Press `Yes`.
- 5 Press `Yes` for 2 seconds to confirm.

Printing the Network Configuration List



Note

Node Name: The Node Name appears in the Network Configuration List. The default Node Name is "BRNxxxxxxxxxxxx" for a wired network or "BRWxxxxxxxxxxxx" for a wireless network ("xxxxxxxxxxxx" is your machine's MAC Address / Ethernet Address).

The Network Configuration List prints a report listing the current network configuration including the network print server settings.

- 1 Press **Menu**.
- 2 Press ▲ or ▼ to choose `Print Reports`. Press **OK**.
- 3 Press ▲ or ▼ to choose `Network Config`. Press **OK**.
- 4 (For US) Press **Black Start** or **Color Start**.
(For UK) Press **Mono Start** or **Colour Start**.

For Touchscreen models

- 1 Press `MENU`.
- 2 Press ▲ or ▼ to display `Print Reports` and then press `Print Reports`.
- 3 Press ▲ or ▼ to display `Network Config` and then press `Network Config`.
- 4 (For US) Press **Black Start** or **Color Start**.
(For UK) Press **Mono Start** or **Colour Start**.

Printing the WLAN Report

The `WLAN Report` prints your machine's wireless status report. If the wireless connection failed, check the error code on the printed report and refer to *Troubleshooting* in the *Quick Setup Guide*.

- 1 Press **Menu**.
- 2 Press ▲ or ▼ to choose `Print Reports`.
Press **OK**.
- 3 Press ▲ or ▼ to choose `WLAN Report`.
Press **OK**.
- 4 (For US) Press **Black Start** or **Color Start**.
(For UK) Press **Mono Start** or **Colour Start**.

For Touchscreen models

- 1 Press `MENU`.
- 2 Press ▲ or ▼ to display `Print Reports` and then press `Print Reports`.
- 3 Press ▲ or ▼ to display `WLAN Report` and then press `WLAN Report`.
- 4 (For US) Press **Black Start** or **Color Start**.
(For UK) Press **Mono Start** or **Colour Start**.



Note

If the WLAN Report does not print, try starting step ❶ again after a while.

Function table and default factory settings

Main menu	Submenu	Menu Selections		Options
Network	Wired LAN	TCP/IP	BOOT Method	Auto/Static/RARP/BOOTP/DHCP
			IP Address	[000-255].[000-255]. [000-255].[000-255]. [000].[000].[000].[000] ¹
			Subnet Mask	[000-255].[000-255]. [000-255].[000-255]. [000].[000].[000].[000] ¹
			Gateway	[000-255].[000-255]. [000-255].[000-255]. [000].[000].[000].[000]
			Node Name	BRNXXXXXXXXXXXX = (your machine's Ethernet address) (up to 15 characters)
			WINS Config	Auto/Static
			WINS Server	Primary/Secondary [000-255].[000-255]. [000-255].[000-255]. [000].[000].[000].[000]
			DNS Server	Primary/Secondary [000-255].[000-255]. [000-255].[000-255]. [000].[000].[000].[000]
			APIPA	On/Off
			IPv6	On/Off
		Ethernet		Auto/100B-FD/100B-HD/10B-FD/10B-HD
		MAC Address		
	WLAN	TCP/IP	BOOT Method	Auto/Static/RARP/BOOTP/DHCP
			IP Address	[000-255].[000-255]. [000-255].[000-255]. [000].[000].[000].[000] ¹
			Subnet Mask	[000-255].[000-255]. [000-255].[000-255]. [000].[000].[000].[000] ¹
			Gateway	[000-255].[000-255]. [000-255].[000-255]. [000].[000].[000].[000]

Main menu	Submenu	Menu Selections		Options
Network (Continued)	WLAN (Continued)	TCP/IP (Continued)	Node Name	BRWXXXXXXXXXXXX = (your machine's Ethernet address) (up to 15 characters)
			WINS Config	Auto/Static
			WINS Server	Primary/Secondary [000-255].[000-255]. [000-255].[000-255]. [000].[000].[000].[000]
			DNS Server	Primary/Secondary [000-255].[000-255]. [000-255].[000-255]. [000].[000].[000].[000]
			APIPA	On/Off
			IPv6	On/ Off
		Setup Wizard	—	(Choose SSID from list or manually add SSID)
		WPS/AOSS	—	
		WPS w/PIN Code	—	
		WLAN Status	Status	Active (11b)/Active (11g)/Active (11n)/Connection Fail/AOSS Active
			Signal	Signal:Strong/Signal:Medium/Signal:Weak/Signal:None
			SSID	(Shows SSID with up to 32 digits)
			Comm. Mode	Ad-hoc/Infrastructure
		MAC Address		
	E-mail/IFAX ²	Mail Address	—	
		Setup Server	SMTP Server	Name (up to 30 characters) IP Address [000-255].[000-255]. [000-255].[000-255].
			SMTP Port	[00001-65535]
			Auth. for SMTP	None /SMTP-AUTH/POP bef.SMTP
			POP3 Server	Name (up to 30 characters) IP Address [000-255].[000-255]. [000-255].[000-255].
			POP3 Port	[00001-65535]

Main menu	Submenu	Menu Selections		Options
Network (Continued)	E-mail/IFAX ² (Continued)	Setup Server (Continued)	Mailbox Name	—
			Mailbox Pwd	—
			APOP	On/ Off
		Setup Mail RX	Auto Polling	On /Off
			Poll Frequency ³	10Min (s) (01Min(s) to 60Min(s)) ⁴
			Header	All/Subject+From+To/ None
			Del Error Mail	On /Off
			Notification	On/MDN/ Off
		Setup Mail TX	Sender Subject	—
			Size Limit	On/ Off
			Notification	On/ Off
		Setup Relay	Rly Broadcast	On/ Off
			Relay Domain	Relayxx
			Relay Report	On/ Off
	Time Zone	UTCxxx:xx		
	Network I/F			Wired LAN /WLAN
	LDAP ⁵ (MFC-J6910DW only)	On/ Off		
	Network Reset			

■ The factory settings are shown in bold.

¹ On connection to the network, the machine will automatically set the IP address and Subnet Mask to values appropriate for your network.

² Available after IFAX is downloaded.

³ For Touchscreen models, this menu is available when Auto Polling is set to On.

⁴ For Touchscreen models, you can choose the interval from 1 Min/3 Mins/5 Mins/10 Mins/30 Mins/60 Mins.

⁵ The LDAP protocol is not supported for China.

Overview

A standard Web Browser can be used to manage your machine using the HTTP (Hyper Text Transfer Protocol). You can get the following information from a machine on your network using a web browser.

- Machine status information
- Change Fax configuration items, such as General Setup, Quick-Dial settings and Remote Fax
- Change network settings such as TCP/IP information
- Configure Secure Function Lock 2.0
- Configure Scan to FTP
- Configure Scan to Network
- Configure LDAP (MFC-J6910DW only)
- Software version information of the machine and print server
- Change network and machine configuration details



Note

We recommend Microsoft® Internet Explorer® 6.0 (or greater) or Firefox 3.0 (or greater) for Windows® and Safari 3.0 (or greater) for Macintosh. Please also make sure that JavaScript and Cookies are always enabled in whichever browser you use.

You must use the TCP/IP protocol on your network and have a valid IP address programmed into the print server and your computer.

How to configure the machine settings using Web Based Management (web browser)

A standard web browser can be used to change your print server settings using the HTTP (Hyper Text Transfer Protocol).

- 1 Start your web browser.
- 2 Type "http://machine's IP address/" into your browser's address bar (where "machine's IP address" is the machine's IP address).

■ For example:

`http://192.168.1.2/`



Note

- If you are using a Domain Name System or enable a NetBIOS name, you can enter another name such as "Shared_Printer" instead of the IP address.

- For example:

`http://Shared_Printer/`

If you enable a NetBIOS name, you can also use the node name.

- For example:

`http://brnxxxxxxxxxxxxx/`

The NetBIOS name can be seen in the Network Configuration List. (To learn how to print the Network Configuration List, see *Printing the Network Configuration List* on page 37.)

- For Macintosh users, you can have easy access to the Web Based Management System by clicking the machine icon on the **Status Monitor** screen. For more information, see the *Software User's Guide*.

- 3 You can now change the print server settings.





Note

If you have changed the protocol settings, restart the machine after clicking **Submit** to activate the configuration.

Setting a password

We recommend setting a login password to prevent unauthorized access to the Web Based Management.

- 1 Click **Administrator**.
 - 2 Enter the password you want to use (up to 32 characters).
 - 3 Re-enter the password in **Confirm new password** box.
 - 4 Click **Submit**.
From next time you access to the Web Based Management, enter a password in the **Login** box, and then click .
- After configuring the settings, logout by clicking .



Note

You can also set a password by clicking **Please configure the password.** on the machine's web page if you are not setting a login password.

Secure Function Lock 2.0

Secure Function Lock 2.0 from Brother helps you to save money and increase security by restricting the functions available on your Brother machine.

Secure Function Lock allows you to configure passwords for selected users, granting them access to some, or all, of these functions, or limiting them to a page limit. This means that only authorized people can use them.

You can configure and change the following Secure Function Lock 2.0 settings using BRAdmin Professional 3 or Web Based Management.

- **PC print**¹
- **PCC**
- **Copy**
- **Color Print**
- **Page Limit**
- **Fax TX**
- **Fax RX**
- **Scan**
- **Page Counter**

¹ If you register the PC user login names, you can restrict PC print without the user entering a password. For more detail, see *Restricting PC print by PC user login name* on page 46.

How to configure the Secure Function Lock 2.0 settings using Web Based Management (web browser)

Basic configuration

- 1 Click **Administrator** on the machine's web page, and then click **Secure Function Lock**.
- 2 Choose **On** from **Function Lock**.



Note

To configure Secure Function Lock for the first time through the embedded web server, you have to enter the Administrator Password (four digit number).

- 3 Enter an alphanumeric group name or user name up to 15 digits in the **ID Number/Name** box and then enter a four-digit password in the **PIN** box.
- 4 Uncheck the functions that you want to restrict in the **Print** box or the **Others** box.
If you want to configure the maximum page count, check the **On** box in **Page Limit**, and then enter the number in the **Max** box.

5 Click **Submit**.

If you want to restrict the PC printing by PC login user name, click **PC Print Restriction by Login Name** and configure the settings. (See *Restricting PC print by PC user login name* on page 46.)

Scanning when using Secure Function Lock 2.0

The Secure Function Lock 2.0 feature allows the administrator to restrict which users are allowed to scan. When the scan feature is set to off for the public user setting, only users who have scan selected in the check box will be able to scan. To push scan from the control panel of the machine users must enter their PIN to access the scan mode. To pull scan from their computer, restricted users must also enter their PIN on the control panel of the machine before they can scan from their computer. If the PIN is not entered at the machines control panel the user will get an error message on their computer when they attempt to pull scan.

Setting up public mode

You can set up the public mode to restrict what functions are available for public users. Public users do not need to enter a password to access the features made available through this setting.

- 1 Uncheck the check box for the function that you want to restrict in the **Public Mode** box.
- 2 Click **Submit**.

Restricting PC print by PC user login name

By configuring this setting, the machine can authenticate by PC user login name to allow a print job from a registered computer.

- 1 Click **PC Print Restriction by Login Name**.
- 2 Choose **On** from **PC Print Restriction**.
- 3 Choose the ID Number you set in the **ID Number/Name** in step ③ in *Basic configuration* on page 45 from the **ID Number** pull-down list for each Login Name.
And then enter the PC user login name in the **Login Name** box.
- 4 Click **Submit**.



Note

If you want to restrict PC print per group, choose the same ID Number for each PC login name you want in the group.

Other features

You can set up the following features in Secure Function Lock 2.0:

■ All Counter Reset

You can reset the page counter by clicking **All Counter Reset**.

■ Export to CSV file

You can export the current page counter including **ID Number/Name** information as a CSV file.

■ **Last Counter Record**

The machine retains the page count after the counter has been reset.

■ **Counter Auto Reset**

You can automatically reset the page counters by configuring the time interval based on Daily, Weekly or Monthly settings, during the period the machine is turned on.

Changing the Scan to FTP configuration using a web browser

Scan to FTP allows you to scan a document directly to an FTP server on your local network or on the Internet. See the *Software User's Guide* for more details on Scan to FTP.

- 1 Click **Scan** on the machine's web page, and then click **Scan to FTP/Network**.
- 2 Choose **FTP** in the profile numbers (1 to 5) you want to use for Scan to FTP settings. You can also store two user defined file names that can be used for creating an FTP Server Profile in addition to the seven preset file names in **Create a User Defined File Name**. A maximum of 15 characters can be entered in each of the two fields.
- 3 Click **Submit**.
- 4 Click **Scan to FTP/Network Profile** on **Scan** page. Click the profile number you want to configure. Now you can configure and change the following Scan to FTP settings using a web browser.
 - **Profile Name** (Up to 15 characters)
 - **Host Address** (FTP server address)
 - **Username**
 - **Password**
 - **Store Directory**
 - **File Name**
 - **Quality**
 - **File Type**
 - **Glass Scan Size**
 - **Passive Mode**
 - **Port Number**

You can set **Passive Mode** to Off or On depending on your FTP server and network firewall configuration. You can also change the port number used to access the FTP server. The default for this setting is port 21. In most cases these two settings can remain as default.



Note

Scan to FTP is available when FTP server profiles are configured using Web Based Management.

- 5 After setting, click **Submit**.

Changing the Scan to Network configuration using a web browser

Scan to Network allows you to scan documents directly to a shared folder on a CIFS server located on your local network or the Internet. (For more information on CIFS protocol, see *Network Glossary*.) To enable the CIFS protocol, check the box for **CIFS** of **Protocol** from the **Network** page.

See the *Software User's Guide* for more details on Scan to Network.

- 1 Click **Scan** on the machine's web page, and then click **Scan to FTP/Network**.
- 2 Choose **Network** in the profile numbers (1 to 5) you want to use for Scan to Network settings. You can also store two user defined file names that can be used for creating a Scan to Network Profile in addition to the seven preset file names in **Create a User Defined File Name**. A maximum of 15 characters can be entered in each of the two fields.
- 3 Click **Submit**.
- 4 Click **Scan to FTP/Network Profile** on **Scan** page. Click the profile number you want to configure. Now you can configure and change the following Scan to Network settings using a web browser.
 - **Profile Name** (Up to 15 characters)
 - **Host Address**
 - **Store Directory**
 - **File Name**
 - **Quality**
 - **File Type**
 - **Glass Scan Size**
 - **Use PIN for authentication**
 - **PIN Code**
 - **Username**
 - **Password**
- 5 After setting, click **Submit**.

Changing the LDAP configuration using a web browser (MFC-J6910DW only)

You can configure and change the LDAP settings using a web browser. Click **Network** on the machine's web page, and then click **Protocol**. Make sure that the check box for LDAP is checked and then click **Advanced Setting**.

- **Status**
- **LDAP Server Address**
- **Port** (The default port number is 389.)
- **Timeout for LDAP**
- **Authentication**
- **Username**
- **Password**
- **Search Root**
- **Attribute of Name (Search Key)**
- **Attribute of E-mail**
- **Attribute of Fax Number**

After setting, make sure that the **Status** is set to **Enable** on the Test Result page. Then click **Submit**.



Note

- For the details of each item, see the Help Text in the Web Based Management.
- For more information, visit the solutions section for your model page at <http://solutions.brother.com/>.

Overview

The LDAP protocol allows you to search for information such as fax numbers and E-mail addresses from your server. When you use Fax, I-Fax or Scan to E-mail server features, you can use the LDAP search to find fax numbers or E-mail addresses.



Note

The LDAP protocol is not supported for China.

Changing the LDAP configuration using a Browser

You can configure and change LDAP settings using a web browser. (For more information, see *Changing the LDAP configuration using a web browser (MFC-J6910DW only)* on page 50.)

LDAP operation using the control panel

After you configure LDAP settings, you can use the LDAP search to find fax numbers or E-mail addresses for the following features.

- Fax sending (See the *Basic User's Guide* for sending operations)
- I-Fax sending (See *Internet fax* on page 54 for sending operations)
- Scan to E-mail server (See the *Software User's Guide* for sending operations)

When you are ready to enter a fax number or E-mail address, follow the steps below:

- 1 Press (Phone Book).
- 2 Press to search.
- 3 Enter the initial characters for your search by using the buttons on the Touchscreen.



Note

You can enter up to 15 characters.

- 4 Press OK.

The LDAP search result will be shown on LCD before the local address book search result with . If there is no match on the server or the local address book, the LCD will show Results cannot be found.

- 5 Press the name you are looking for.



Note

To confirm details of the result information, press the name you are looking for, and then press

Detail.

- 6 Choose either a fax number or an E-mail address.

- 7 Load your document and press **Send a fax**.



Note

- The LDAP function of this machine supports LDAPv3.
- You need to use Simple Authentication to communicate with your LDAP server.
- SSL/TLS is not supported.
- For more information, visit the solutions section for your model page at <http://solutions.brother.com/>.

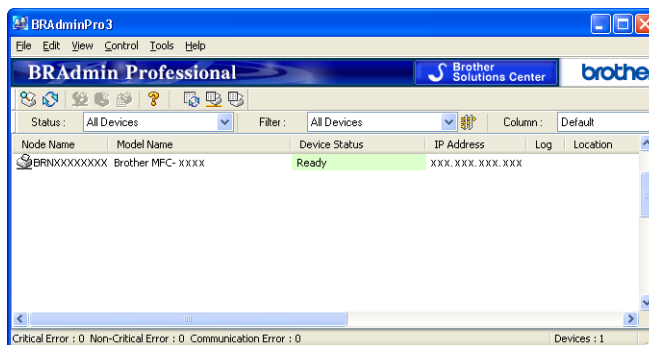
Changing the LDAP configuration using BRAdmin Professional (For Windows®)



Note

Please use the latest version of the BRAdmin Professional utility that is available as a download from <http://solutions.brother.com/>. This utility is only available for Windows® users.

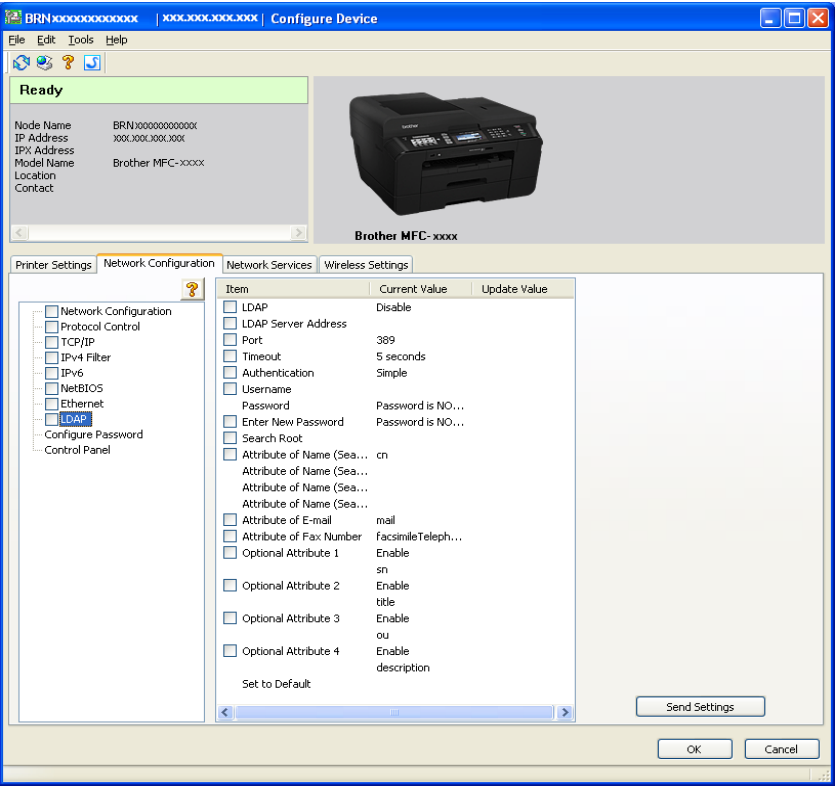
- 1 Start the BRAdmin Professional utility, by clicking **start / All Programs**¹ / **Brother Administrator Utilities / Brother BRAdmin Professional 3 / BRAdmin Professional 3**.



¹ **Programs** for Windows® 2000 users

- 2 Choose the print server which you want to configure.
- 3 Choose **Configure Device** from the **Control** menu.
- 4 Enter a password. The default password is "access".

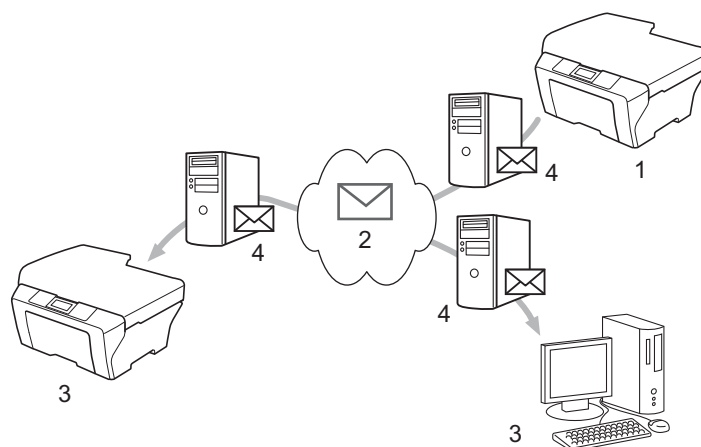
- 5 Choose the **Network Configuration** tab and then click **LDAP**.



- 6 Click the items you want to configure.

Internet fax Overview

Internet faxing (IFAX) allows you to send and receive fax documents using the Internet as the transport mechanism. Documents are transmitted in E-mail messages as attached TIFF-F files. This means that computers are also able to receive and send documents, providing that the computer has as an application that can generate and view TIFF-F files, you can use any TIFF-F viewer application. Any documents sent via the machine will automatically be converted into a TIFF-F format. If you wish to send and receive messages to and from your machine, your mail application on the computer must be able to support the MIME format.



- 1 Sender
- 2 Internet
- 3 Receiver
- 4 E-mail server



Note

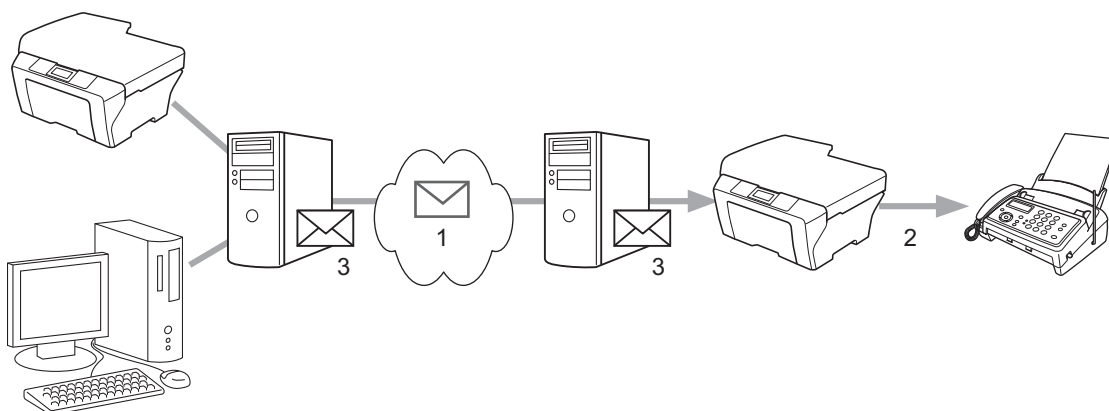
- In order to use this function, please download the necessary software from the Brother Solutions Center. (<http://solutions.brother.com/>)
- You can send/receive I-Fax documents in Letter or A4 format and in Black & White only.
- If your document is in a Ledger or A3 format, it will automatically be reduced to Letter or A4 format when it is sent.

■ Forwarding received E-mail and fax messages

You can forward received E-mail or standard fax messages to another E-mail address or fax machine. For more information see *Forwarding received E-mail and fax messages* on page 59.

■ Relay broadcast

If you want to fax the document to a long distance such as abroad, "relay broadcast" function allows you to save the communication fee. This function allows the Brother machine to receive the document over the Internet, and then relay it to other fax machine through conventional telephone lines. For more information see *Relay broadcasting* on page 59.



- 1 Internet**
- 2 Telephone line**
- 3 E-mail server**

Important information on Internet fax

Internet fax communication on a LAN system is basically the same as communication via E-mail; however, it is different from fax communication using standard phone lines. The following is important information for using Internet fax:

- Factors such as the receiver's location, structure of the LAN system, and how busy the circuit (such as the Internet) is, may cause the system to take a long time to send back an error mail (normally 20 sec. to 30 sec.).
- In the case of transmission through the Internet, due to its low level of security, we recommend that you use standard phone lines to send confidential documents.
- If the receiver's mail system is not compatible with the MIME format, you cannot transmit a document to the receiver. Depending on the receiver's server, there may be some cases in which the error mail will not be sent back.
- If the size of a document's image data is too large, there is a possibility of unsuccessful transmission.
- You cannot change the font or character size of Internet mail that you received.

How to Internet fax

Before using an Internet fax you must configure your Brother machine to communicate with your network and mail server. You must ensure the following items of your machine. You can configure these items from the control panel, Web Based Management, Remote Setup or BRAdmin Professional 3. If you are unsure of any of these items, please contact your systems administrator.

- E-mail address
- SMTP, POP3 server address/port/Authentication method
- mailbox name and password

Sending an Internet fax

Before sending an Internet fax

To send the Internet fax, you can configure following items from the control panel, Web Based Management or Remote Setup.



- Sender Subject (if needed)
- Size Limit (if needed)
- Notification (if needed) (For more information, see *TX Verification Mail* on page 62)

How to send an Internet fax

Sending an Internet fax is the same as sending a normal fax. (For more information, see the *Basic User's Guide*.) If you have already programmed the addresses of the destination Internet fax machines as One Touch or Speed-Dial locations, you can send the Internet fax by loading the document into the machine. If you want to change the resolution, use the **Fax Resolution** to set the preferred resolution, choose a Speed Dial or One Touch number, and press **Black Start/Mono Start** or **Color Start/Colour Start**. (S.Fine is not supported for Internet fax.)



Note

- If you wish to manually enter the Internet fax address, load the document into the machine and press **Shift** and **1** simultaneously to change into the “alphabet” dialing mode. For Touchscreen models, press . Press  to choose numbers, characters or special characters. Enter the address and press **OK** or **OK**, and then press **Black Start/Mono Start** or **Color Start/Colour Start**.
For more information how to enter text, see the *Quick Setup Guide*.
- You can register the E-mail address information from Web Based Management or Remote Setup.

After the document is scanned, it is transmitted to the recipient Internet fax machine automatically via your SMTP server. You can cancel the send operation by pressing the **Stop/Exit** key during scanning. After the transmission is finished, the machine will return to standby mode.



Note

Some E-mail servers do not allow you to send large E-mail documents (the System Administrator will often place a limit on the maximum E-mail size). With this function enabled, the machine will display **Out of Memory** when trying to send E-mail documents over 1 Mbyte in size. The document will not be sent and an error report will be printed. The document you are sending should be separated into smaller

documents that will be accepted by the mail server. (For your information, a 42 page document based on the ITU-T Test Chart #1 test chart is approximately 1 Mbyte in size.)

Receiving E-mail or Internet fax

Before receiving an Internet fax

To receive the Internet fax, you can configure following items from the control panel, Web Based Management or Remote Setup:

- Auto Polling (if needed)
- Poll Frequency (if needed)
- Header (if needed)
- Delete Error Mail (if needed)
- Notification (if needed) (For more information, see *TX Verification Mail* on page 62)

How to receive an Internet fax

There are 2 ways you can receive E-mail messages:

- POP3 receiving at regular intervals
- POP3 receiving (manually initiated)

Using POP3 receiving the machine must poll the E-mail server to receive the data. This polling can occur at set intervals (for example, you can configure the machine to poll the E-mail server at 10 minute intervals) or you can manually poll the server by pressing the **Shift + Black Start/Mono Start** or **Color Start/Colour Start** keys.

If your machine starts to receive E-mail data, the LCD panel will reflect this activity. For example, you will see *Receiving* on the LCD panel followed by *xx E-mail(s)*. If you press the **Shift + Black Start/Mono Start** or **Color Start/Colour Start** keys to manually poll the E-mail server for E-mail data and there are no mail documents waiting to be printed, the machine will display *No Mail* on the LCD panel for two seconds.



Note

- If your machine is out of paper when receiving data, the received data will be held in the machine's memory. This data will be printed automatically after paper is re-inserted into the machine. (For European, Asian and Oceanic machines, *Memory Receive* must be switched On.)
- If the received mail is not in a plain text format or an attached file is not in the TIFF-F format, the following error message will be printed: "ATTACHED FILE FORMAT NOT SUPPORTED. FILE NAME:XXXXXX.doc" If the received mail is too large, the following error message will be printed: "E-MAIL FILE TOO LARGE.". If Delete POP Receive Error Mail is ON (default) then the error mail is automatically deleted from the E-mail server.

Receiving an Internet fax to your computer

When a computer receives an Internet fax document, the document is attached to a mail message that informs the computer that it has received a document from an Internet fax. This is notified in the subject field of the received mail message.



Note

If the computer to which you wish to send a document is not running Windows® 2000/XP, Windows Server® 2003/2008, Windows Vista® or Windows® 7 operating system, please inform the computer's owner that they must install some software that can view TIFF-F files.

Additional Internet Fax options

Forwarding received E-mail and fax messages

You can forward received E-mail or standard fax messages to another E-mail address or fax machine. Received messages can be forwarded via E-mail to a computer or Internet fax. They can also be forwarded via standard phone lines to another machine.

The setting can be enabled using a web browser or through the control panel of the machine. The steps for configuring fax forward can be found in the *Advanced User's Guide*.

Please see the *Advanced User's Guide* to check that this feature is supported.

Relay broadcasting

This function allows the Brother machine to receive a document over the Internet, and then relay it to other fax machines through conventional telephone lines.

Before relaying broadcast

To relay broadcast, you must configure following items from the control panel, Web Based Management or Remote Setup:

- Relay Broadcast

You must enable the relay broadcast.

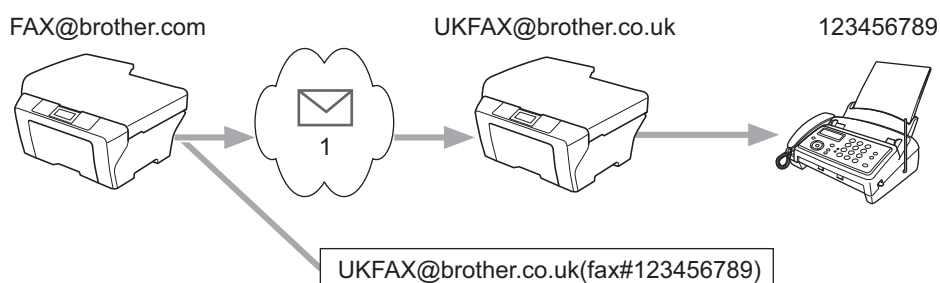
- Relay Domain

You must configure your machine's domain name on the machine that will broadcast the document to the conventional fax machine. If you wish to use your machine as a relay broadcast device, you must specify the domain name that you trust at the machine, in other words, the portion of the name after the "@" sign. Use care in selecting a trusted domain since any user on a trusted domain will be able to send a relay broadcast.

You can register up to 5 domain names.

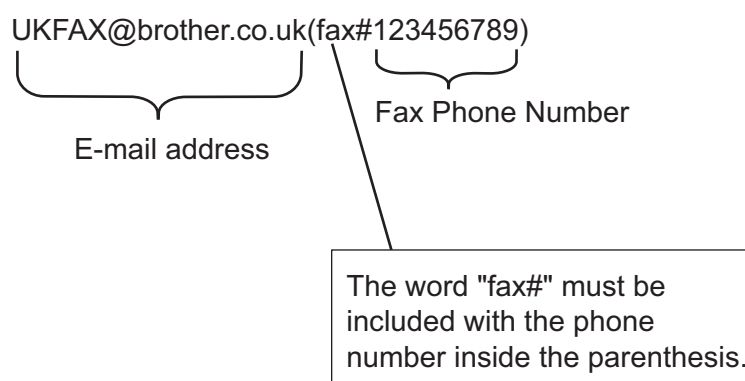
- Relay Report

Relay broadcast from a machine




In this example, your machine has an E-mail address of FAX@brother.com, you wish to send a document from this machine to another machine in England with an E-mail address of UKFAX@brother.co.uk, this machine will then forward the document to a standard fax machine using a conventional telephone line. If your E-mail address is FAX@brother.com, you must configure a trusted domain name of brother.com on the machine in England that will broadcast the document to the conventional fax machine. If you do not enter the domain name information, then the machine in the middle (the machine that will broadcast the document) will not trust any Internet jobs that it receives from the machine in the @brother.com domain.

After the trusted domain is set you can send the document from your machine [e.g. FAX@brother.com] by entering the E-mail address of the machine [e.g. UKFAX@brother.co.uk] that will forward the document followed by the phone number of the fax that will receive the document. The following is an example of how to enter the E-mail address and phone number.



Sending to multiple phone numbers:

If you want to have the document relayed to more than one standard fax machine the address can be entered using the following method:

- 1 Press  (FAX).
- 2 Press ▲ or ▼ to choose **Broadcasting**. Press **OK**.
- 3 Press ▲ or ▼ to choose **Dial Type** and press ◀ or ▶ to choose **E-Address**. Press **OK**.
- 4 Press ▲ or ▼ to choose **Add Number** and enter the phone number of the first Fax machine UKFAX@brother.co.uk(fax#123).
- 5 Press **OK**.
- 6 Press ▲ or ▼ to choose **Dial Type** and press ◀ or ▶ to choose **E-Address**. Press **OK**.
- 7 Press ▲ or ▼ to choose **Add Number** and enter the phone number of the second Fax machine UKFAX@brother.co.uk(fax#456).

8 Press ▲ or ▼ to choose **Complete**.
Press **OK**.

9 (For US) Press **Black Start**.
(For UK) Press **Mono Start**.

For Touchscreen models

1 Press  (**FAX**).


2 Press ◀ or ▶ to display **Broadcasting**.

3 Press **Broadcasting**.

4 You can add numbers to the broadcast in the following ways:

- Press **Add Number** and enter a number using the buttons on the LCD.
Press **OK**.

- Press **Phone Book**.

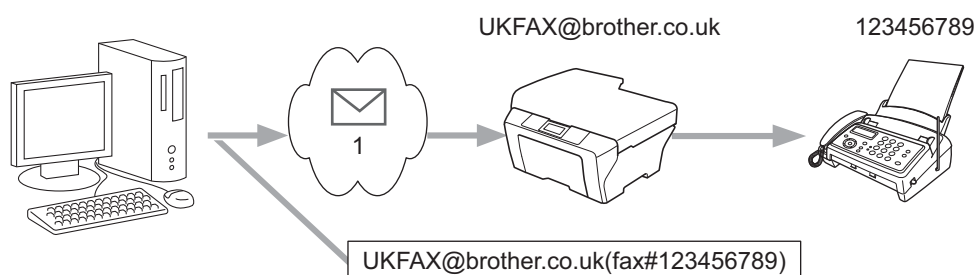
Press  to search by Alphabetical Order or Numerical Order. Press the locations where you want to send a fax.

Press **OK**.

5 After you have entered all the fax numbers by repeating step 4, press **OK**.

6 (For US) Press **Black Start**.
(For UK) Press **Mono Start**.

Relay broadcast from a computer



1 Internet

You can also send E-mail from your computer and have it relayed to a conventional fax machine. The method of entering the phone number of the conventional fax machine that will receive the relayed E-mail will vary depending on the mail application you are using. The following are some examples of different mail applications:

Some E-mail applications do not support sending to multiple phone numbers. If your E-mail application cannot support multiple phone numbers you will only be able to relay to one fax machine at a time.

Enter the address of the relay machine and phone number of the fax in the “TO” box using the same method used when sending from a machine.

UKFAX@brother.co.uk(fax#123456789)



Note

For Microsoft® Outlook® 97 or greater, the address information must be entered into the address book as follows:

Name: fax#123456789

E-mail address: UKFAX@brother.co.uk

TX Verification Mail

Transmission Verification Mail supports two separate functions. Verification Mail for sending allows you to request notification from the receiving station that the Internet Fax or E-mail was received and processed. Verification Mail for receiving allows you to transmit a default report back to the sending station after successfully receiving and processing an Internet Fax or E-mail.

To use this feature you must set the **Notification** option within the **Setup Mail RX** and **Setup Mail TX** options.

Setup Mail TX

You can set the **Notification** option in the **Setup Mail TX** option to either **On** or **Off**. When switched to **On** an additional field of information is sent with the image data. This field is named “MDN”.

MDN (Message Disposition Notification):

This field requests the status of the Internet Fax/E-mail message after delivery through the SMTP (Send Mail Transfer Protocol) transport system. Once the message has arrived at the receiver this data is used when the machine or user reads or prints the received Internet Fax or E-mail. For example, if the message is opened for reading or is printed the receiver sends back a notification to the original sending machine or user.

The receiver must support the MDN field in order to be able to send a notification report, otherwise the request will be ignored.

Setup Mail RX

There are three possible settings for this option **On**, **MDN** or **Off**.

Receive Notification “On”

When switched to “On” a fixed message is sent back to the sender to indicate successful reception and processing of the message. These fixed messages depend on the operation requested by the sender.

Report messages consist of:

SUCCESS: Received From <Mail Address>

Receive Notification “MDN”

When switched to “MDN” a report as described above is sent back to the sender if the originating station sent the “MDN” field to request confirmation.

Receive Notification “Off”

Off switches all forms of receive notification `Off`, no message are sent back to the sender regardless of the request.



Note

To receive the TX verification mail properly, you must configure following settings.

- Sender
 - Switch Notification in the Setup Mail TX to on.
 - Switch Header in the Setup Mail RX to All or Subject+From+To.
 - Receiver
 - Switch Notification in the Setup Mail RX to on.
-

Error mail

If there is a mail delivery error while sending an Internet fax, the mail server will send an error message back to the machine and the error message will be printed. If there is an error while receiving mail, an error message will be printed (Example: “The message being sent to the machine was not in a TIFF-F format.”).

To receive the error mail properly, you must switch Header in the Setup Mail RX to All or Subject+From+To.

Overview

In today's world there are many security threats to your network and the data that travels over it. Your Brother machine employs some of the latest network security and encryption protocols available today. These network features can be integrated into your overall network security plan to help protect your data and prevent unauthorized access to the machine. This chapter explains how to configure them.

You can configure the following security features:

- Sending an E-mail securely (See *Sending an E-mail securely* on page 65.)
- Secure Management using BRAdmin Professional 3 (Windows®) (See *Secure Management using BRAdmin Professional 3 (Windows®)* on page 67.)



Note

We recommend to disable the Telnet, FTP and TFTP protocols. Accessing the machine using these protocols is not secure. (For how to configure the protocol settings, see *How to configure the machine settings using Web Based Management (web browser)* on page 43.) If you disable FTP, the Scan to FTP function will be disabled.

Sending an E-mail securely

Configuration using Web Based Management (web browser)

You can configure secured E-mail sending with user authentication on the Web Based Management screen.

- 1 Start your web browser.
- 2 Type "http://printer's IP address/" into your browser (where "printer's IP address" is the printer's IP address).
 - For example:
http://192.168.1.2/
- 3 Enter a password in the **Login** box, and then click ➡.
- 4 Click **Network**.
- 5 Click **Protocol**.
- 6 Click **Advanced Setting** of **POP3/SMTP** and make sure that the status of **POP3/SMTP** is **Enable**.
- 7 You can configure the **POP3/SMTP** settings on this page.



Note

- For more information, see the Help text in Web Based Management.
- You can also confirm whether the E-mail settings are correct after configuration by sending a test E-mail.

- 8 After configuring, click **Submit**. The Test E-mail Send/Receive Configuration dialog appears.
- 9 Follow the instructions on-screen if you want to test with the current settings.

Sending an E-mail with user authentication

This machine supports POP before SMTP and SMTP-AUTH methods to send an E-mail via an E-mail server that requires a user authentication. These methods prevent an unauthorized user from accessing the E-mail server. You can use Web Based Management, BRAdmin Professional 3 and Web BRAdmin to configure these settings. You can use POP before SMTP and SMTP-AUTH methods for E-mail Notification, E-mail reports and Internet fax sending.

E-mail server settings

You need to match the settings of SMTP authentication method with the method used by your E-mail server. Contact your network administrator or your ISP (Internet Service Provider) about the E-mail server configuration.

You will also need to check **SMTP-AUTH** of **SMTP Server Authentication Method** to enable the SMTP server authentication.

SMTP settings

- You can change the SMTP port number using Web Based Management. This is useful if your ISP (Internet Service Provider) implements the “Outbound Port 25 Blocking (OP25B)” service.
- By changing the SMTP port number to a specific number which your ISP is using for the SMTP server (for example, port 587), you would then be able to send an E-mail via the SMTP server.
- If you can use both POP before SMTP and SMTP-AUTH, we recommend choosing SMTP-AUTH.
- If you choose POP before SMTP for the SMTP Server Authentication Method, you need to configure the POP3 settings. You can also use the APOP method if needed.

Secure Management using BRAdmin Professional 3 (Windows[®])

To use the BRAdmin Professional 3 utility securely, you need to follow the points below

- We strongly recommend to use the latest version of the BRAdmin Professional 3 utility or Web BRAdmin that are available as a download from <http://solutions.brother.com/>. If you use an older version of BRAdmin ¹ to manage your Brother machines the user authentication will not be secure.
- If you are managing a mixed group of older print servers ² and the print servers with BRAdmin Professional 3, we recommend using a different password in each group. This will ensure security is maintained on the new print servers.

¹ BRAdmin Professional older than Ver. 2.80, Web BRAdmin older than Ver. 1.40, BRAdmin Light for Macintosh older than Ver. 1.10

² NC-2000 series, NC-2100p, NC-3100h, NC-3100s, NC-4100h, NC-5100h, NC-5200h, NC-6100h, NC-6200h, NC-6300h, NC-6400h, NC-8000, NC-100h, NC-110h, NC-120w, NC-130h, NC-140w, NC-8100h, NC-9100h, NC-7100w, NC-7200w, NC-2200w

Overview

This chapter explains how to resolve typical network problems you may encounter when using your Brother machine. If, after reading this chapter, you are unable to resolve your problem, please visit the Brother Solutions Center at: <http://solutions.brother.com/>.

Make sure that the following items are configured before reading this chapter.

First check the following:
The power cord is connected properly and the Brother machine is turned on.
The access point (for wireless), router or hub is turned on and its link light is blinking.
All protective packaging has been removed from the machine.
The ink cartridges are installed properly.
The front and back covers are fully closed.
Paper is inserted properly in the paper tray.
(For wired networks) A network cable is securely connected to the Brother machine and the router or hub.

Go to the page for your solution from the lists below:

- I cannot complete the wireless network setup configuration. (See page 68.)
- The Brother machine is not found on the network during the MFL-Pro Suite installation. (See page 69.)
- The Brother machine cannot print or scan over the network. (See page 70.)
- The Brother machine is not found on the network even after successful installation. (See page 70.)
- I'm using security software. (See page 72.)
- I want to check my network devices are working properly. (See page 73.)

I cannot complete the wireless network setup configuration.

Question	Interface	Solution
Are your security settings (SSID/Network Key) correct?	wireless	<ul style="list-style-type: none"> ■ Reconfirm and choose the correct security settings. <ul style="list-style-type: none"> • The manufacturer's name or model no. of the WLAN access point/router may be used as the default security settings. • See the instructions supplied with your WLAN access point/router for information on how to find the security settings. • Ask the manufacturer of your WLAN access point/router or ask your Internet provider or network administrator. ■ For information on what the SSID and Network Key are, see SSID, Network Key and channels in the <i>Network Glossary</i>.
Are you using MAC address filtering?	wireless	Confirm that the MAC address of the Brother machine is allowed in the filter. You can find the MAC address from Brother machine's control panel. (See <i>Function table and default factory settings</i> on page 39.)

I cannot complete the wireless network setup configuration. (continued)


Question	Interface	Solution
Is your WLAN access point/router in stealth mode? (not broadcasting the SSID)	wireless	<ul style="list-style-type: none"> ■ You should type the correct SSID name or Network Key by hand. ■ Check the SSID name or the Network Key in the instructions supplied with your WLAN access point/router and reconfigure the wireless network setup. (For more information, see <i>Configuring your machine when the SSID is not broadcast</i> on page 16.)
I have checked and tried all of the above, but still cannot complete the wireless configuration. Is there anything else I can do?	wireless	Use the Network Connection Repair Tool. (See <i>(Windows®) Confirming the IP address and the Subnet Mask using the Network Connection Repair Tool.</i> on page 70.)

The Brother machine is not found on the network during the MFL-Pro Suite installation.

Question	Interface	Solution
Are you using security software?	wired/ wireless	<ul style="list-style-type: none"> ■ Confirm your settings on the installer dialog. ■ Allow access when the alert message of the security software appears during the MFL-Pro Suite installation. ■ For more information about security software, see <i>I'm using security software.</i> on page 72.
Is your Brother machine placed too far from the WLAN access point/router?	wireless	Place your Brother machine within about 3.3 feet (1 meter) from the WLAN access point/router when you configure the wireless network settings.
Are there any obstructions (walls or furniture, for example) between your machine and the WLAN access point/router?	wireless	Move your Brother machine to an obstruction-free area, or closer to the WLAN access point/router.
Is there a wireless computer, Bluetooth supported device, microwave oven or digital cordless phone near the Brother machine or the WLAN access point/router?	wireless	Move all the devices away from Brother machine or WLAN access point/router.




The Brother machine cannot print or scan over the network.

The Brother machine is not found on the network even after successful installation.

Question	Interface	Solution
Are you using security software?	wired/ wireless	See <i>I'm using security software.</i> on page 72.
Is your Brother machine assigned with an available IP address?	wired/ wireless	<p>■ Confirming the IP address and the Subnet Mask</p> <p>Verify that both the IP addresses and Subnet Masks of your computer and the Brother machine are correct and located on the same network.</p> <p>For more information on how to verify the IP address and the Subnet Mask, ask the network administrator or visit the Brother Solutions Center at http://solutions.brother.com/.</p> <p>■ (Windows®)</p> <p>Confirming the IP address and the Subnet Mask using the Network Connection Repair Tool.</p> <p>Use the Network Connection Repair Tool to fix the Brother machine's network settings. It will assign the correct IP address and Subnet Mask.</p> <p>To use the Network Connection Repair Tool follow the steps below:</p> <p> Note</p> <ul style="list-style-type: none"> • (Windows® 2000/XP/Windows Vista®/Windows® 7) Login to the network with Administrator privileges. • Make sure that the Brother machine is turned on and is network-connected to your computer.



The Brother machine cannot print or scan over the network.

The Brother machine is not found on the network even after successful installation. (continued)

Question	Interface	Solution
Is your Brother machine assigned with an available IP address? (Continued)	wired/ wireless	<p>1 (Windows® 2000/XP, Windows Server® 2003/2008) Click the start button, All Programs (Programs for Windows® 2000), Accessories and Windows Explorer, and then My Computer.</p> <p>(Windows Vista®/Windows® 7) Click the  button and Computer.</p> <p>2 Double-click Local Disk (C:), Program Files or Program Files (x86), Brown02, Brother, BrotherNetTool.exe to run the program.</p> <p> Note If the User Account Control screen appears, (Windows Vista®) Click Allow. (Windows® 7) Click Yes.</p> <p>3 Follow the on screen instructions.</p> <p>4 Check the diagnosis by printing the Network Configuration List.</p> <p> Note The Network Connection Repair Tool will start automatically if you check the Enable Network Connection Repair Tool box using the Status Monitor. Right-click on the Status Monitor screen, click Options, Details and then click the Diagnostic tab. This is not recommended when your network administrator has set the IP address to static, since it will automatically change the IP address.</p> <p>If the correct IP address and Subnet mask are still not assigned even after using the Network Connection Repair Tool, ask the network administrator for this information, or visit the Brother Solutions Center at http://solutions.brother.com/.</p>

The Brother machine cannot print or scan over the network.

The Brother machine is not found on the network even after successful installation. (continued)

Question	Interface	Solution
Did your previous printing job fail?	wired/ wireless	<ul style="list-style-type: none"> ■ If the failed printing job is still in the print queue of your computer delete it. ■ Double-click the printer icon in the following folder and then choose the Cancel All Documents in the Printer menu: (Windows® 2000) Start, Settings and then Printers. (Windows® XP) start and Printers and Faxes. (Windows Vista®)  Control Panel, Hardware and Sound and then Printers. (Windows® 7)  Control Panel, Devices and Printers and then Printers and Faxes.
Are you connecting the Brother machine to the network using wireless capabilities?	wireless	<ul style="list-style-type: none"> ■ Print the WLAN Report to confirm the state of a wireless connection. (For how to print, see <i>Printing the WLAN Report</i> on page 38.) If there is an error code on the printed WLAN report see <i>Troubleshooting</i> in the <i>Quick Setup Guide</i>. ■ See <i>The Brother machine is not found on the network during the MFL-Pro Suite installation.</i> on page 69.
I have checked and tried all of above, however the Brother machine does not print/scan. Is there anything else I can do?	wired/ wireless	Uninstall the MFL-Pro Suite and reinstall it.

I'm using security software.

Question	Interface	Solution
Did you choose to accept the security alert dialog during the MFL-Pro Suite or BRAdmin Light installation or when using the printing/scanning features?	wired/ wireless	If you did not choose to accept the security alert dialog, the firewall function of your security software may be rejecting access. Some security software might block access without showing a security alert dialog. To allow access, see the instructions of your security software or ask the manufacturer.

I'm using security software. (continued)

Question	Interface	Solution
I want to know the necessary port number for the security software settings.	wired/ wireless	<p>The following port numbers are used for Brother network features:</p> <ul style="list-style-type: none"> ■ Network scanning → Port number 54925 / Protocol UDP ■ PC-FAX RX → Port number 54926 / Protocol UDP ■ Network scanning/printing, PC-FAX RX, Remote Setup → Port number 137 / Protocol UDP ■ BRAdmin Light → Port number 161 / Protocol UDP <p>For details on how to open the port, see the instructions of the security software or ask the manufacturer.</p>

I want to check my network devices are working properly.

Question	Interface	Solution
Is your Brother machine, access point/router or network hub turned on?	wired/ wireless	Make sure you have confirmed all instructions in <i>Make sure that the following items are configured before reading this chapter.</i> on page 68.
Where can I find Brother machine's network settings, such as IP address?	wired/ wireless	Printing the Network Configuration List. See <i>Printing the Network Configuration List</i> on page 37.
Check the Link Status in the Network Configuration List.	wired/ wireless	<p>Printing the Network Configuration List and check that Ethernet Link Status or Wireless Link Status is Link OK.</p> <p>If the Link Status shows Link DOWN or Failed To Associate, start over again from the <i>Make sure that the following items are configured before reading this chapter.</i> on page 68.</p>
Can you “ping” Brother machine from your computer?	wired/ wireless	<p>Ping the Brother machine from your computer using the IP address or the node name.</p> <ul style="list-style-type: none"> ■ Successful – Your Brother machine is working correctly and connected to the same network as your computer. ■ Unsuccessful – Your Brother machine is not connected to the same network as your computer. <p>(Windows®)</p> <p>Ask the network administrator and use the Network Connection Repair Tool to fix the IP address and the subnet mask automatically. For the detail of the Network Connection Repair Tool, see (Windows®) <i>Confirming the IP address and the Subnet Mask using the Network Connection Repair Tool.</i> on page 70.</p> <p>(Macintosh)</p> <p>Confirm the IP address and the Subnet Mask are set correctly. See <i>Confirming the IP address and the Subnet Mask</i> on page 70.</p>
Is the Brother machine connecting to the wireless network?	wireless	<p>Print the WLAN Report to confirm the state of a wireless connection. (For how to print, see <i>Printing the WLAN Report</i> on page 38.)</p> <p>If there is an error code on the printed WLAN report see <i>Troubleshooting in the Quick Setup Guide.</i></p>

I want to check my network devices are working properly. (continued)

Question	Interface	Solution
I have checked and tried all of the above, however, I'm still having problems. Is there anything else I can do?	wired/ wireless	See the instructions supplied with your WLAN access point/router to find the SSID and the Network Key information and set them correctly. For details of the SSID and the Network Key, See <i>Are your security settings (SSID/Network Key) correct?</i> on page 68.

Supported protocols and security features

Interface	Ethernet	10/100BASE-TX
	Wireless	IEEE 802.11b/g/n (Infrastructure Mode / Ad-hoc Mode)
Network (common)	Protocol (IPv4)	ARP, RARP, BOOTP, DHCP, APIPA (Auto IP), WINS/NetBIOS name resolution, DNS Resolver, mDNS, LLMNR responder, LPR/LPD, Custom Raw Port/Port9100, FTP Client and Server, TFTP server, SMTP Client, APOP, POP before SMTP, SMTP-AUTH SNMPv1, ICMP, LLTD responder, Web Services (Print), CIFS client
	Protocol (IPv6)	NDP, RA, mDNS, LPR/LPD, Custom Raw Port/Port9100, FTP Client and Server, TELNET, TFTP, POP3, SMTP Client, APOP, POP before SMTP, SMTP-AUTH SNMPv1, Scanner Port, LLTD responder, Web Services (Print)
Network (Security)	Wireless	SSID (32 chr), WEP 64/128 bit, WPA-PSK (TKIP/AES), WPA2-PSK (AES)

B

Index

A

Ad-hoc mode	10, 11
AOSS™	12, 13, 15, 30
APIPA	30

B

BRAdmin Light	2, 4
BRAdmin Professional 3	2, 7, 67
Brother installer application	13
Brother Solutions Center	5, 7

C

Control Panel	28
---------------------	----

D

DNS Server	30
Driver Deployment Wizard	2

E

Ethernet	31
----------------	----

F

Factory Default	36
-----------------------	----

G

Gateway	29
---------------	----

H

Hyper Text Transfer Protocol	7
------------------------------------	---

I

Infrastructure mode	9, 11
IP Address	29
IPv6	30

L

LDAP	51
------------	----

M

MAC Address	31
-------------------	----

N

Network Configuration List	37
Network Connection Repair Tool	70
Network Photo Capture	2
Node Name	29

O

Operating systems	2
-------------------------	---

P

PBC	12, 13, 15, 30
PIN Method	14, 20, 31
POP before SMTP	65

R

Remote Setup	2
Restoring the network settings	36

S

SMTP-AUTH	65
Status Monitor	2
Subnet Mask	29

T

TCP/IP	28
--------------	----

V

Vertical Pairing	2
------------------------	---

W

Web Based Management (web browser)	2, 7
Web BRAdmin	2, 7
Web browser (HTTP)	7
Wi-Fi Protected Setup	12, 13, 14, 15, 20, 30, 31
WINS Config	29
WINS Server	29
Wireless network	8
WLAN Report	38