

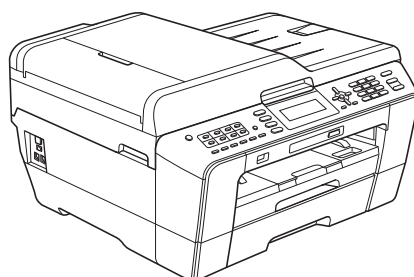
Please read Safety and Legal booklet first before you set up your machine. Then, please read this Quick Setup Guide for the correct setup and installation.

⚠ WARNING	<u>WARNING</u> indicates a potentially hazardous situation which, if not avoided, could result in death or serious injuries.
⚠ CAUTION	<u>CAUTION</u> indicates a potentially hazardous situation which, if not avoided, may result in minor or moderate injuries.

1

Unpack the machine

■ Most of the illustrations in this Quick Setup Guide show the MFC-J6710DW.



⚠ WARNING

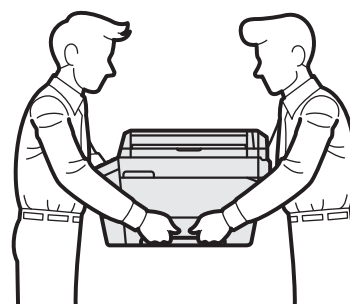
Plastic bags are used in the packing of your machine. Plastic bags are not toys. To avoid the danger of suffocation, keep these bags away from babies and children and dispose of them properly.

⚠ CAUTION

(For MFC-J6710DW)

To prevent injuries when moving or lifting this machine, make sure to use at least two people. Be careful not to pinch your fingers when you set the machine back down.

- a** Remove the protective tape and film covering the machine, and also from the LCD.



2

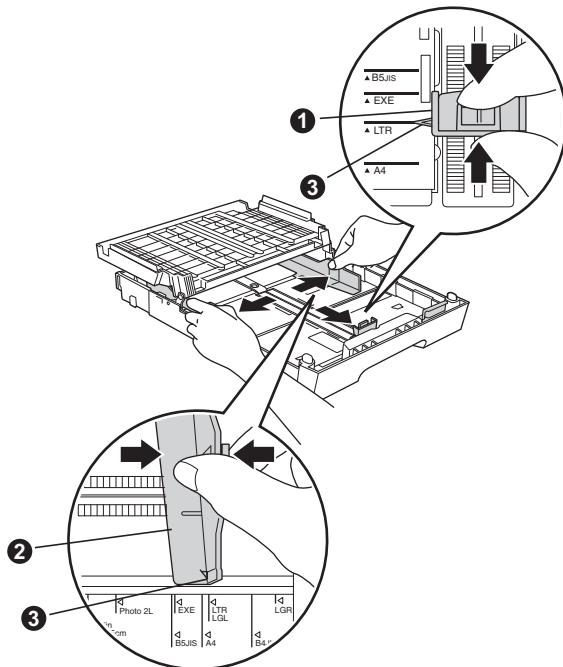
Load plain A4 paper

a Pull the paper tray (For MFC-J6710DW, paper tray #1, the upper tray) completely out of the machine.

b Open the output paper tray cover.

c With both hands, gently press and slide the paper length guide **1** and then the paper side guides **2** to fit the paper size.

Make sure that the triangular marks **3** on the paper length guide **1** and paper side guides **2** line up with the mark for the paper size you are using.



3

Connect the power cord and telephone line

! IMPORTANT

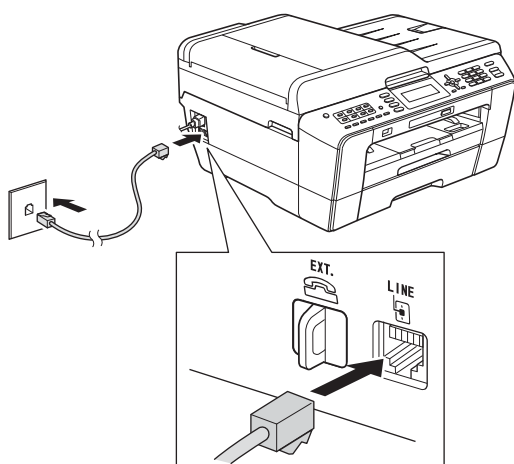
DO NOT connect the USB cable yet (if you are using a USB cable).

- a** Connect the power cord.

! WARNING

The machine must be fitted with an earthed plug.

b



! WARNING

Since the machine is grounded through the power outlet, you can protect yourself from potentially hazardous electrical conditions on the telephone network by keeping the power cord connected to your machine when you connect it to a telephone line. Similarly, you can protect yourself when you want to move your machine by disconnecting the telephone line first and then the power cord.

! IMPORTANT

The telephone line cord **MUST** be connected to the socket on the machine marked **LINE**.

4

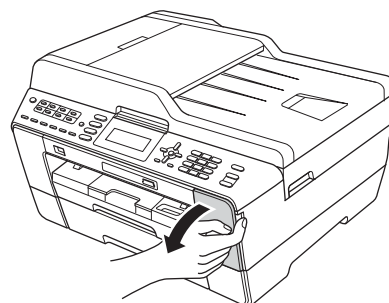
Install the ink cartridges

Note

Make sure you install the Introductory ink cartridges included with your machine first.

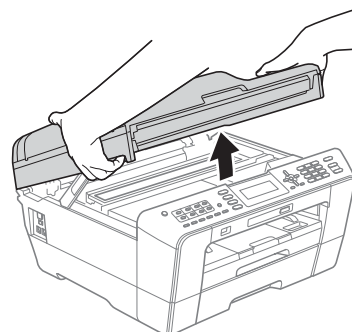
- a** Make sure that the power is turned on.

- b** Open the ink cartridge cover.

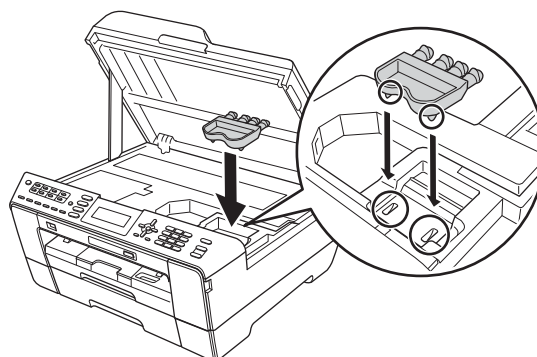


- c** Remove the orange protective part.

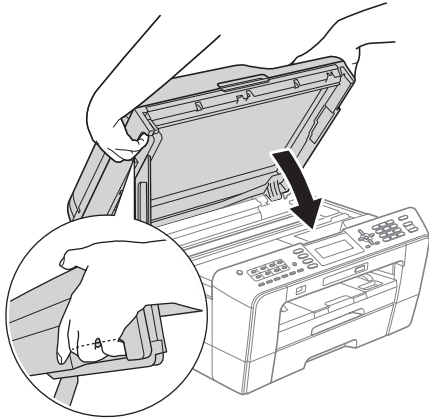
- d** Lift the scanner cover into the open position.



- e** Store the orange protective part in the holder inside the machine as shown.



f

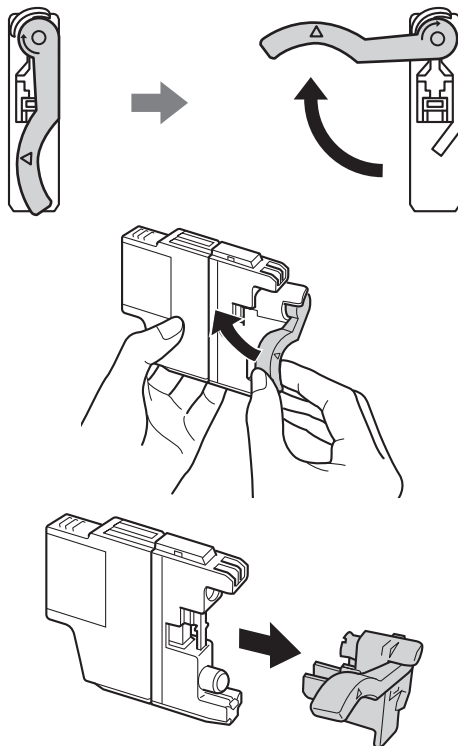


! WARNING

Be careful not to trap your fingers under the scanner cover.

Always use the finger holds provided on each side of the scanner cover when opening and closing it.

g Unpack the ink cartridge.



! IMPORTANT

DO NOT shake the ink cartridges. If ink stains your skin or clothing, wash with soap or detergent at once.

h

Take care to match the colour of the lever with the cartridge colour.
Install each ink cartridge in the direction of the arrow on the label.

i

Gently push the back of the ink cartridge marked "PUSH" until it clicks. After all the ink cartridges are installed close the ink cartridge cover.



Note

The machine will prepare the ink tube system for printing. This process will take approximately four minutes. Do not turn off the machine.

! CAUTION

If ink gets in your eyes, wash it out with water at once and call a doctor if you are concerned.

5

Check the print quality



Note

Make sure you put paper in the paper tray (For MFC-J6710DW, tray #1, the upper tray) for the initial setup.

a

When the preparation process has finished, the LCD shows **Set Paper** and **Press Start**. Press **Colour Start**.

b

Check the quality of the four colour blocks on the sheet. (black/yellow/cyan/magenta)

c

If all lines are clear and visible, press **1** (Yes) on the dial pad to finish the quality check and go to step **6**.

If you can see missing short lines, press **2** (No) on the dial pad and follow the steps on the LCD.

6 Set the paper settings

For your machine to produce the best print quality and feed the correct paper size, the paper type and size must be set to match the paper in the tray.

- a** When the LCD shows to set the paper size and paper type, press **Tray Setting** or **Paper Setting** (depending on your model).
- b** (For MFC-J6710DW)
Press ▲ or ▼ to choose Tray#1 or Tray#2.
Press **OK**.
- c** Press ▲ or ▼ to choose Paper Type or Paper Size.
- d** Press ◀ or ▶ to choose the type or size of paper you are using.
Press **OK**.
- e** (For MFC-J6710DW)
Press ▲ or ▼ to choose **Complete** to go back to the previous level.
Press **OK**.
- f** Press ▲ or ▼ to choose **Complete**.
Press **OK**.

Note

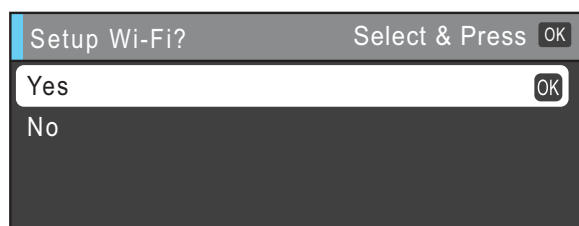
To cancel, press **Stop/Exit**. You can set the paper settings later.

7 Wireless setup (if needed)

For wireless setup using a Macintosh computer or mobile device, go to **a**.

For Windows® users (all connections) and Macintosh USB connections, go to **b**.

- a** If you are using a Macintosh computer or a mobile device on a wireless network, press **OK**.



Press ▲ or ▼ to choose **Yes**.

Press **OK**.

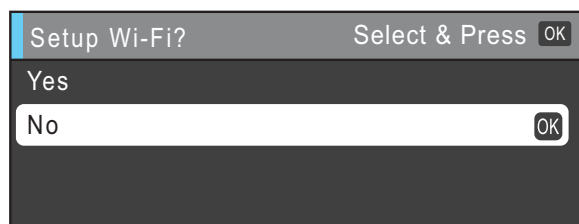
Then go to step **17** on page 18 to continue the wireless setup.

After finishing the wireless setup you will need to return to step **8** to finish the machine setup.

Note

You can choose **No** to configure the wireless settings later.

- b** If you are using a Windows® computer or want to connect your Macintosh using USB, press **OK**.



Press ▲ or ▼ to choose **No**.

Press **OK**.

Then go to step **8**.

The wireless setup for Windows® users will be covered in later steps.

8

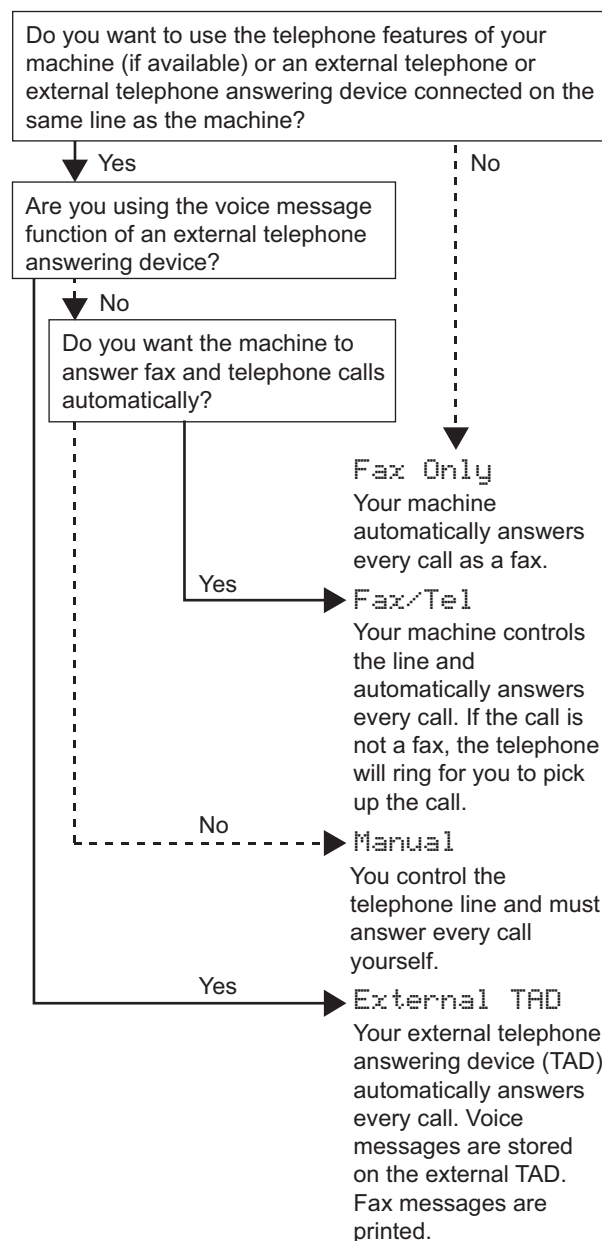
Choose your language

- a** Press **Menu**.
- b** Press **▲** or **▼** to select **Initial Setup**. Press **OK**.
- c** Press **▲** or **▼** to select **Local Language**. Press **OK**.
- d** Press **▲** or **▼** to select your language. Press **OK**.
- e** Press **Stop/Exit**.

9

Choose a Receive Mode

There are four possible receive modes: **Fax Only**, **Fax/Tel**, **Manual** and **External TAD**.



- a** Press **Menu**.
- b** Press **▲** or **▼** to choose **Initial Setup**. Press **OK**.
- c** Press **▲** or **▼** to choose **Receive Mode**.
- d** Press **◀** or **▶** to choose the receive mode. Press **OK**.
- e** Press **Stop/Exit**.

10 Set the date and time

- a** Press **Menu**.
- b** Press **▲** or **▼** to choose **Initial Setup**. Press **OK**.
- c** Press **▲** or **▼** to choose **Date&Time**. Press **OK**.
- d** Enter the last two digits of the year on the dial pad, and then press **OK**.
- e** Repeat for month/day/time in 24-hour format.
- f** Press **Stop/Exit**.

11 Enter personal information (Station ID)

You should store your name and fax number to be printed on all fax pages that you send.

- a** Press **Menu**.
- b** Press **▲** or **▼** to choose **Initial Setup**. Press **OK**.
- c** Press **▲** or **▼** to choose **Station ID**. Press **OK**.
- d** Enter your fax number (up to 20 digits) on the dial pad, and then press **OK**. To enter a "+" for international codes, press *****.
- e** Enter your name (up to 20 characters) using the dial pad, and then press **OK**.
- f** Press **Stop/Exit**.

Note

If you make a mistake and want to start again, press **Stop/Exit** and go back to **a**.

12 Set Tone or Pulse dialling mode

- a** Press **Menu**.
- b** Press **▲** or **▼** to choose **Initial Setup**. Press **OK**.
- c** Press **▲** or **▼** to choose **Tone/Pulse**.
- d** Press **◀** or **▶** to choose **Pulse (or Tone)**. Press **OK**.
- e** Press **Stop/Exit**.

13 Set the telephone line type

- a** Press **Menu**.
- b** Press **▲** or **▼** to choose **Initial Setup**. Press **OK**.
- c** Press **▲** or **▼** to choose **Phone Line Set**. Press **▶** or **OK**.
- d** Press **▲** or **▼** to choose **Normal, PBX or ISDN**. Press **OK**.

Note

If you choose **PBX** the machine shows the step of the **Dial Prefix** setting. For information, see *Setting the Telephone Line Type* in chapter 6 of the *Basic User's Guide on the Documentation CD-ROM*.

- e** Press **Stop/Exit**.

14

Set the telephone line compatibility

If you are connecting the machine to a VoIP service (over the Internet) you need to change the compatibility setting.



Note

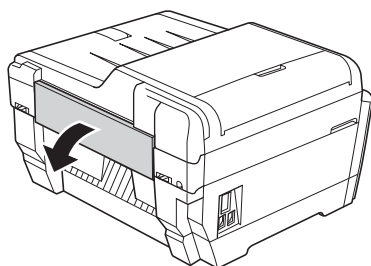
If you are using an analogue telephone line you can skip this step.

- a** Press **Menu**.
- b** Press **▲** or **▼** to choose **Initial Setup**. Press **OK**.
- c** Press **▲** or **▼** to choose **Compatibility**.
- d** Press **◀** or **▶** to choose **Basic (for VoIP)**. Press **OK**.
- e** Press **Stop/Exit**.

15

Manual Feed Slot

You can load special print media into this slot. (Please note that *only one sheet* can be used at a time.) Use the manual feed slot to print or copy on envelopes, labels or thicker paper.

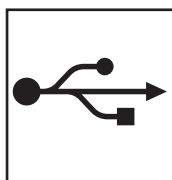
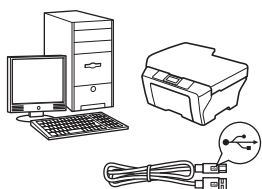


16 Choose your connection type

These installation instructions are for Windows® 2000 Professional/XP Home/XP Professional (x32/x64 Edition), Windows Vista®, Windows® 7, and Mac OS X (versions 10.4.11, 10.5.x and 10.6.x).

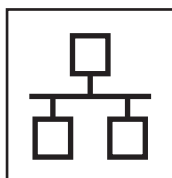
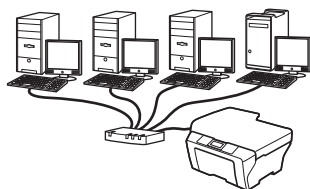
Note

For Windows Server® 2003 (x32/x64 Edition)/2003 R2 (x32/x64 Edition)/2008/2008 R2, visit your model page at <http://solutions.brother.com/>.



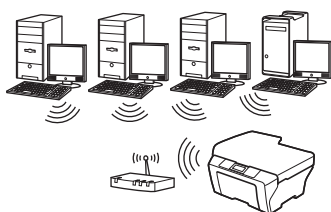
For USB interface cable

Windows®, go to page 10
Macintosh, go to page 12



For Wired Network

Windows®, go to page 14
Macintosh, go to page 16



For Wireless Network

Windows® and Macintosh,
go to page 18

Windows®
USB

Macintosh

Windows®
Wired Network

Macintosh

Wireless Network



For USB interface users

(Windows® 2000 Professional/XP Home/XP Professional/Windows Vista®/Windows® 7)

17

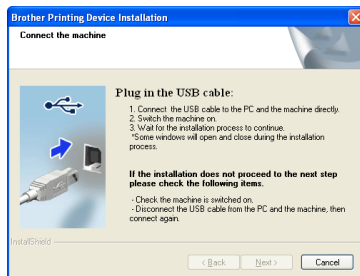
Before you install

Make sure that your computer is ON and you are logged on with Administrator rights.

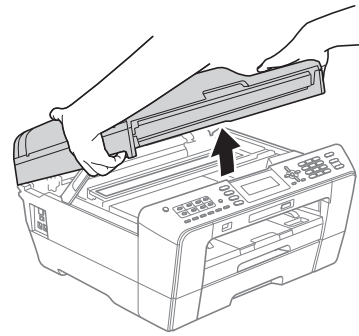
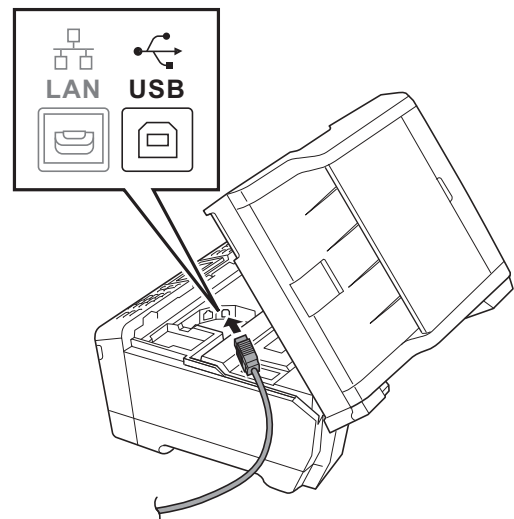
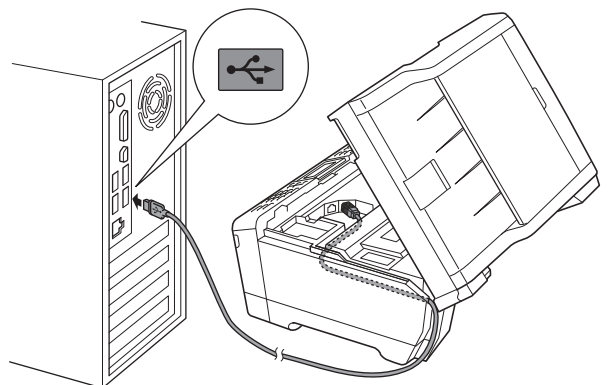
18

Install MFL-Pro Suite

- a** Put the supplied installation CD-ROM into your CD-ROM drive. Follow the on-screen instructions.
- b** The CD-ROM Top menu will appear. Click **Initial Installation**.
- c** Click **Install MFL-Pro Suite** and click **Yes** if you accept the license agreements. Follow the on-screen instructions.
- d** Choose **Local Connection**, and then click **Next**. The installation continues.
- e** When this screen appears, go to the next step.

**19**

Connect the USB cable

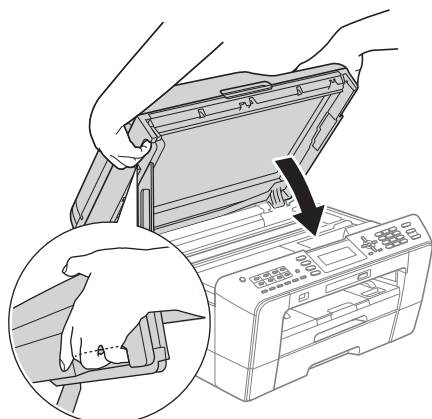
a**b****c**

! IMPORTANT

Make sure that the cable does not restrict the cover from closing, or an error may occur.



d

**! WARNING**

Be careful not to trap your fingers under the scanner cover.

Always use the finger holds provided on each side of the scanner cover when opening and closing it.

- e** The installation will continue automatically. The installation screens appear one after another.
- f** When the **User's Guides** screen is displayed, click **View Manuals on the Web** if you want to download the manuals and follow the on-screen instructions. You can also view the manuals on the documentation CD-ROM.
- g** When the **On-Line Registration** screen is displayed, make your selection and follow the on-screen instructions.
- h** If you do not want to set your machine as the Default printer, uncheck **Set as Default Printer**.

20**Finish and restart**

- a** Click **Finish** to restart your computer. After restarting the computer, you must be logged on with Administrator rights.
- b** In the **Check for Firmware Updates** screen, choose the firmware update setting you want and click **OK**.

**Note**

Internet access is required for the firmware update.

Finish

The installation is now complete.

Now go to

Proceed to **Install Optional Applications** on page 26.

**Note****XML Paper Specification Printer Driver**

The XML Paper Specification Printer Driver is the most suitable driver for Windows Vista® and Windows® 7 when printing from applications that use the XML Paper Specification documents. Please download the latest driver by accessing the Brother Solutions Center at <http://solutions.brother.com/>.



For USB interface users (Mac OS X 10.4.11, 10.5.x, 10.6.x)

17

Before you install

Make sure your machine is connected to the power and your Macintosh is ON. You must be logged on with Administrator rights.

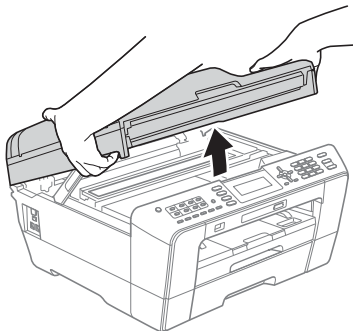
18

Connect the USB cable

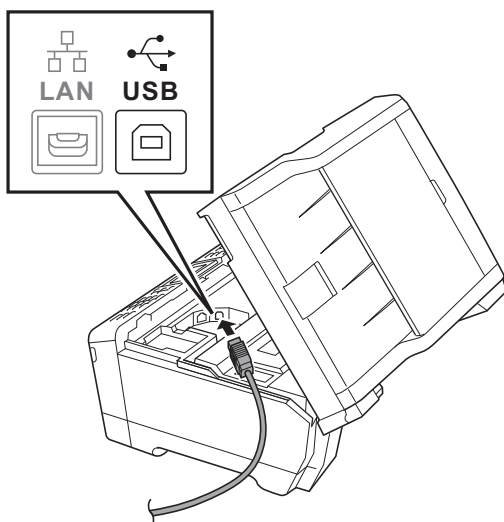
! IMPORTANT

- **DO NOT** connect the machine to a USB port on a keyboard or a non-powered USB hub.
- Connect the machine directly to your Macintosh.

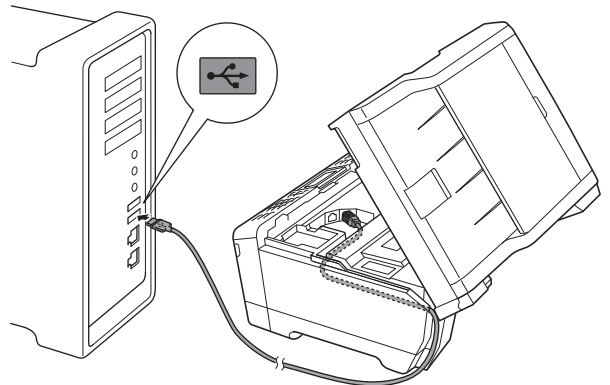
a



b



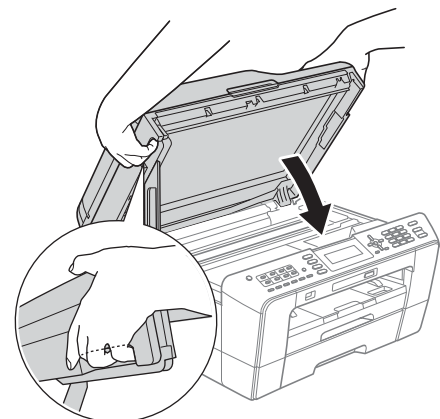
c



! IMPORTANT

Make sure that the cable does not restrict the cover from closing, or an error may occur.

d



! WARNING

Be careful not to trap your fingers under the scanner cover.

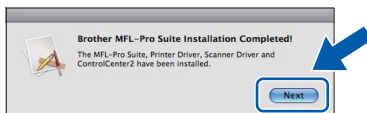
Always use the finger holds provided on each side of the scanner cover when opening and closing it.



19

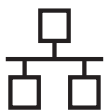
Install MFL-Pro Suite

- a** Put the supplied installation CD-ROM into your CD-ROM drive.
- b** Double-click the **Start Here OSX** icon to install.
- c** Choose **Local Connection**, and then click **Next**. Follow the on-screen instructions.
- d** Please wait for the software to install, it will take about 30 seconds. After the installation, the Brother software will search for the Brother device.
- e** Choose the machine from the list, and then click **OK**.
- f** When this screen appears, click **Next**.



- g** When the **Brother Support** screen appears, click **Close**.

Finish**The installation is now complete.**



For wired network interface users

(Windows® 2000 Professional/XP Home/XP Professional/Windows Vista®/Windows® 7)

17

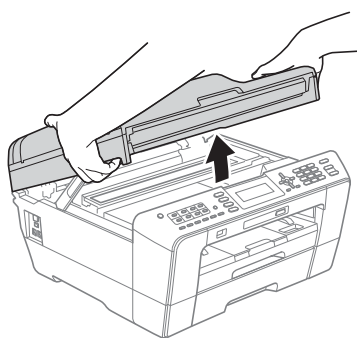
Before you install

Make sure that your computer is ON and you are logged on with Administrator rights.

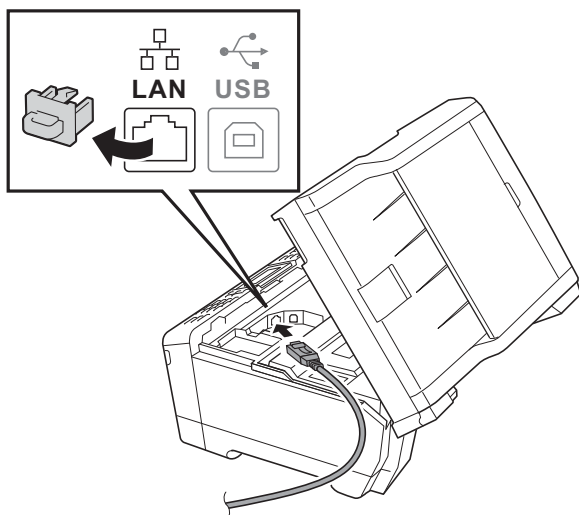
18

Connect the network cable

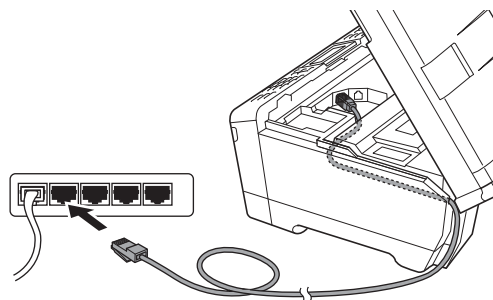
a



b



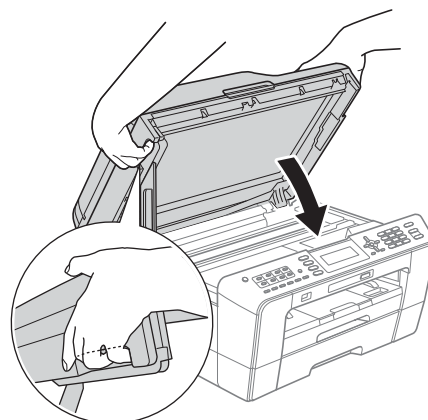
c



! IMPORTANT

Make sure that the cable does not restrict the cover from closing, or an error may occur.

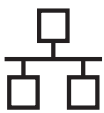
d



! WARNING

Be careful not to trap your fingers under the scanner cover.

Always use the finger holds provided on each side of the scanner cover when opening and closing it.



19

Install MFL-Pro Suite

- a** Put the supplied installation CD-ROM into your CD-ROM drive. Follow the on-screen instructions.
- b** The CD-ROM Top menu will appear. Click **Initial Installation**.
- c** Click **Install MFL-Pro Suite** and click **Yes** if you accept the license agreements. Follow the on-screen instructions.
- d** Choose **Wired Network Connection**, and then click **Next**.
- e** When **Firewall/AntiVirus detected** screen appears, choose **Change the Firewall port settings to enable network connection and continue with the installation. (Recommended)** and click **Next**. (Not for Windows® 2000)

If you are using a firewall other than Windows® Firewall see the instructions provided with your firewall software for information on how to add the following network ports.

- For network scanning, add UDP port 54925.
- For network PC-Fax receiving, add UDP port 54926.
- If you still have trouble with your network connection, add UDP port 137.



Note

- If there is more than one machine connected to the network, choose your machine from the list, and then click **Next**.
- If your machine is not found over the network, confirm your settings by following the on-screen instructions.

- f** The installation of the Brother drivers will automatically start. The installation screens appear one after another.
- g** When the **User's Guides** screen is displayed, click **View Manuals on the Web** if you want to download the manuals and follow the on-screen instructions. You can also view the manuals on the documentation CD-ROM.
- h** When the **On-Line Registration** screen is displayed, make your selection and follow the on-screen instructions.
- i** If you do not want to set your machine as the Default printer, uncheck **Set as Default Printer**.

20

Finish and restart

- a** Click **Finish** to restart your computer. After restarting the computer, you must be logged on with Administrator rights.
- b** In the **Check for Firmware Updates** screen, choose the firmware update setting you want and click **OK**.



Note

Internet access is required for the firmware update.

Finish

The installation is now complete.

Now go to

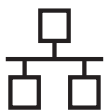
Proceed to Install Optional Applications on page 26.



Note

XML Paper Specification Printer Driver

The XML Paper Specification Printer Driver is the most suitable driver for Windows Vista® and Windows® 7 when printing from applications that use the XML Paper Specification documents. Please download the latest driver by accessing the Brother Solutions Center at <http://solutions.brother.com/>.



For wired network interface users (Mac OS X 10.4.11, 10.5.x, 10.6.x)

17

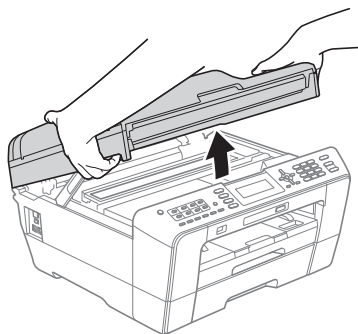
Before you install

Make sure your machine is connected to the power and your Macintosh is ON. You must be logged on with Administrator rights.

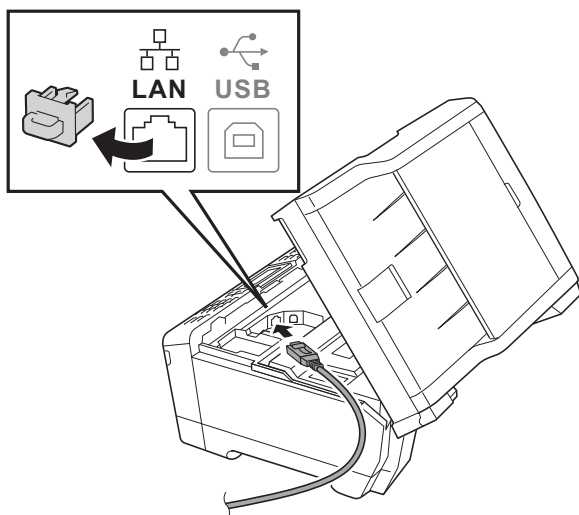
18

Connect the network cable

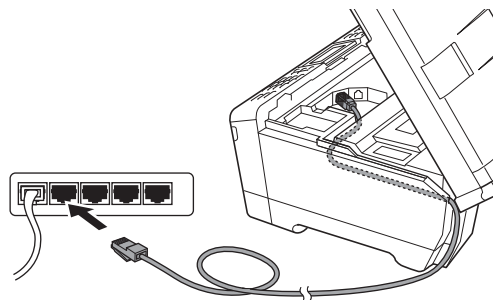
a



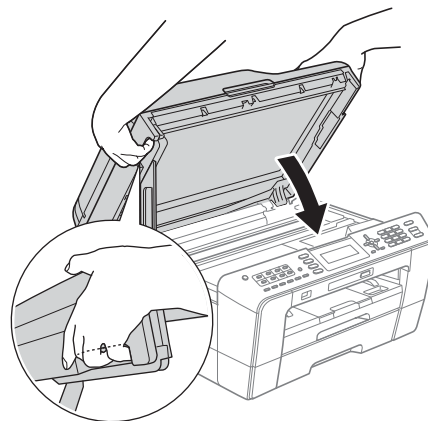
b



c

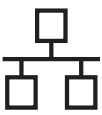


d



! WARNING

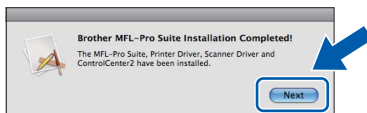
Be careful not to trap your fingers under the scanner cover.
Always use the finger holds provided on each side of the scanner cover when opening and closing it.



19

Install MFL-Pro Suite

- a** Put the supplied installation CD-ROM into your CD-ROM drive.
- b** Double-click the **Start Here OSX** icon to install.
- c** Choose **Wired Network Connection**, and then click **Next**. Follow the on-screen instructions.
- d** Please wait for the software to install, it will take about 30 seconds. After the installation, the Brother software will search for the Brother device.
- e** If the machine is configured for your network, choose the machine from the list, and then click **OK**.
- f** When this screen appears, click **Next**.



- g** When the **Brother Support** screen appears, click **Close**.

Finish

The installation is now complete.



For wireless network interface users

17 Before you begin

Although the Brother MFC-J6510DW and MFC-J6710DW can be used in both a wired and wireless network, only one of the connection methods can be used at a time.

Note

If you have previously configured the wireless settings of the machine you must reset the network (LAN) settings before you can configure the wireless settings again.

*On your machine, press **Menu**. Press **▲** or **▼** to choose *Network* and press **OK**.*

*Press **▲** or **▼** to choose *Network Reset*, and then press **OK**.*

*Press **1** twice for *Yes* to accept the change.*

Note

To set up your machine in Ad-hoc mode (connected to a wireless capable computer without an access point/router) you can find instructions in the Network User's Guide on the documentation CD-ROM.

Also you can download the Network User's Guide by following the instructions below.

1 Turn on your computer. Insert the installation CD-ROM into your CD-ROM drive.

For Windows®:

2 Choose your model and the language. The CD-ROM top menu will appear.

*3 Click **Documentation**, and follow the on-screen instructions.*

For Macintosh:

*2 Double-click **Documentation**, and follow the on-screen instructions.*



18

Choose your wireless setup method

The following instructions will offer three methods for setting up your Brother machine on a wireless network. If you began the wireless setup from step **7** on page 5 (for Macintosh and mobile devices) go to method **a** (Setup Wizard). For all other users, choose the method you prefer for your environment.

a Manual setup from the control panel using the Setup Wizard (Macintosh, Mobile Devices and Windows®)

If your wireless access point/router does not support WPS (Wi-Fi Protected Setup) or AOSS™, **write down the wireless network settings** of your wireless access point/router in the area below.

Please do not contact Brother Customer Service for assistance without the wireless security information. We cannot assist you in locating your network security settings.

Item	Record the current wireless network settings
SSID (Network Name):	
Network Key	

* The Network Key may also be described as the Password, Security Key or Encryption Key.



Note

If you do not know this information (SSID and Network Key), you cannot continue the wireless setup.

How can I find this information

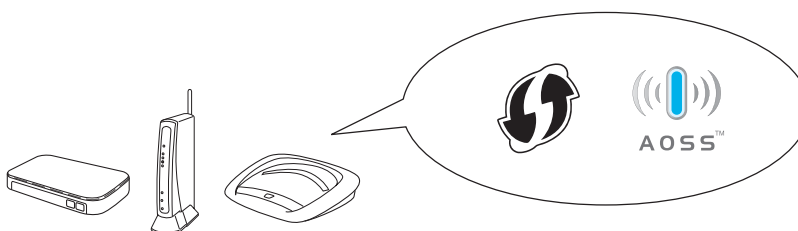
- 1) You should see the documentation provided with your wireless access point/router.
- 2) The initial SSID could be the manufacturer's name or the model name.
- 3) If you do not know the security information, please consult the router manufacturer, your system administrator, or internet provider.

Now go to

page 20

b One-push Setup using WPS or AOSS™ (Windows® and Macintosh)

If your wireless access point/router supports automatic wireless (one-push) setup (WPS or AOSS™), you can find instructions in the Network User's Guide on the documentation CD-ROM. To set up your machine in any other wireless environment (Ad-hoc mode) you can find instructions in the Network User's Guide on the documentation CD-ROM.

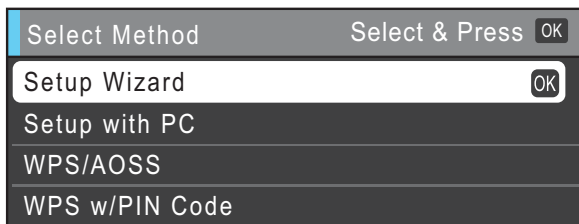




19

Manual setup from the control panel using the Setup Wizard (Macintosh, Mobile Devices and Windows®)

- a** If you began the wireless setup from step 7 on page 5 (for Macintosh and mobile devices), press ▲ or ▼ to choose **Setup Wizard** and press **OK**.
Then go to **c**.
All other users go to **b**.



- b** On your machine, press **Menu**.
Press ▲ or ▼ to choose **Network** and press **OK**.
Press ▲ or ▼ to choose **WLAN** and press **OK**.
Press ▲ or ▼ to choose **Setup Wizard** and press **OK**.
- c** When **Network I/F** switched to **Wireless** is displayed, press **OK** to accept. This will start the wireless setup wizard. To cancel, press **Stop/Exit**.
- d** The machine will search for available SSIDs. It will take several seconds to display a list of available SSIDs.
If a list of SSIDs is displayed, press ▲ or ▼ to choose the SSID you wrote down in step 18-a on page 19, then press **OK**.
- If the wireless access point/router of the selected SSID supports WPS and the machine asks to use WPS, go to **e**.
If the machine asks you to enter a Network Key, go to **f**.
Otherwise, go to **g**.



Note

- If a list of SSIDs is not displayed, make sure your access point is on. Move your machine closer to the access point and try starting from **b** again.
- If your access point is set to not broadcast the SSID, you will have to manually add the SSID name. For details, see the Network User's Guide.

e

Press **1** (**Yes**) to connect your machine using WPS. (If you choose **2** (**No**) to continue manual setting, go to **f** to enter a Network Key.)

When the LCD shows **Start WPS**, press the WPS button on your wireless access point/router, and then press **1** (**Next**) to proceed.

Go to **g**.

f

Enter the Network Key you wrote down in step 18-a on page 19 using the dial pad to choose each letter or number.

The letters appear in this order: lower case, upper case and then numbers. To move the cursor left or right, press ◀ or ▶.

Press **OK** when you have entered all the characters, then press **1** (**Yes**) to apply your settings.

g

Your machine will now try to connect to your wireless network. It may take a few minutes.

h

A connection result message appears for 60 seconds on the LCD and a wireless LAN report will automatically be printed.
If the connection failed, check the error code on the printed report and refer to *Troubleshooting* on page 21.



Wireless setup is now complete. A four level indicator on the bottom of your machine's LCD will show the wireless signal strength of your access point/router.



Note

*Mobile Device users: When using applications such as AirPrint or Brother iPrint&Scan with your machine, please refer to the application's User's Guide. To download the User's Guide, go to the **Manuals** download section of your model's home page on the Brother Solutions Center at <http://solutions.brother.com/>.*

For computer users, please install MFL-Pro Suite, continue to step 20.

For Macintosh Users:

Now go to

Page 25

For Windows® Users:

Now go to

Page 23



Troubleshooting

Please do not contact Brother Customer Service for assistance without the wireless security information. We cannot assist you in locating your network security settings.

How can I find the wireless security information (SSID and Network Key)

- 1) You should see the documentation provided with your wireless access point/router.
- 2) The initial SSID could be the manufacturer's name or the model name.
- 3) If you do not know the security information, please consult the router manufacturer, your system administrator, or internet provider.

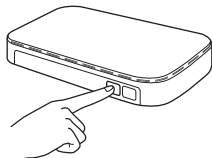
* The Network Key may also be described as the Password, Security Key or Encryption Key.

Wireless LAN report

If the wireless LAN report that printed shows that the connection failed, check the error code on the printed report and refer to the following instructions.

Error code	Recommended Solutions
TS-01	<p>The wireless setting is not activated, turn the wireless setting to ON.</p> <ul style="list-style-type: none">- If a LAN cable is connected to your machine, disconnect it and turn the wireless setting of your machine to ON. <p>On your machine, press Menu. Press ▲ or ▼ to choose Network and press OK. Press ▲ or ▼ to choose Network I/F and press OK. Press ▲ or ▼ to choose WLAN and press OK. Press Stop/Exit.</p>
TS-02	<p>The wireless access point/router cannot be detected.</p> <p>1. Check the following 4 points.</p> <ul style="list-style-type: none">- Make sure that the wireless access point/router is powered on.- Move your machine to an obstruction-free area, or closer to the wireless access point/router.- Temporarily place your machine within about one metre from the wireless access point when you are configuring the wireless settings.- If your wireless access point/router is using MAC address filtering, confirm the MAC address of the Brother machine is allowed in the filter. <p>2. If you manually entered the SSID and security information (SSID/authentication method/encryption method/Network Key), the information may be incorrect. Reconfirm the SSID and security information and re-enter the correct information as necessary.</p> <p>See <i>How can I find the wireless security information (SSID and Network Key)</i> on page 21 to confirm.</p>



TS-04	<p>The Authentication/Encryption methods used by the selected wireless access point/router are not supported by your machine.</p> <p>For infrastructure mode, change the authentication and encryption methods of the wireless access point/router. Your machine supports the following authentication methods:</p> <table border="1" data-bbox="416 394 1177 658"> <thead> <tr> <th>authentication method</th><th>encryption method</th></tr> </thead> <tbody> <tr> <td rowspan="2">WPA-Personal</td><td>TKIP</td></tr> <tr> <td>AES</td></tr> <tr> <td>WPA2-Personal</td><td>AES</td></tr> <tr> <td rowspan="2">Open</td><td>WEP</td></tr> <tr> <td>None (without encryption)</td></tr> <tr> <td>Shared key</td><td>WEP</td></tr> </tbody> </table> <p>If your problem is not solved, the SSID or network settings you entered may be incorrect. Reconfirm the wireless network settings.</p> <p>See <i>How can I find the wireless security information (SSID and Network Key)</i> on page 21 to confirm.</p> <p>For ad-hoc mode, change the authentication and encryption methods of your computer for the wireless setting. Your machine supports Open authentication method only, with optional WEP encryption.</p>	authentication method	encryption method	WPA-Personal	TKIP	AES	WPA2-Personal	AES	Open	WEP	None (without encryption)	Shared key	WEP
authentication method	encryption method												
WPA-Personal	TKIP												
	AES												
WPA2-Personal	AES												
Open	WEP												
	None (without encryption)												
Shared key	WEP												
TS-05	<p>The security information (SSID/Network Key) is incorrect. Reconfirm the SSID and security information (Network Key). If your router uses WEP encryption, enter the key used as the first WEP key. Your Brother machine supports the use of the first WEP key only.</p> <p>See <i>How can I find the wireless security information (SSID and Network Key)</i> on page 21 to confirm.</p>												
TS-06	<p>The wireless security information (Authentication method/Encryption method/Network Key) is incorrect. Reconfirm the wireless security information (Authentication method/Encryption method/Network Key) in the table of TS-04. If your router uses WEP encryption, enter the key used as the first WEP key. Your Brother machine supports the use of the first WEP key only.</p> <p>See <i>How can I find the wireless security information (SSID and Network Key)</i> on page 21 to confirm.</p>												
TS-07	<p>The machine cannot detect a wireless access point/router that has WPS or AOSS™ enabled.</p> <p>If you would like to configure your wireless settings using WPS or AOSS™, you must operate both your machine and the wireless access point/router. Confirm your wireless access point/router supports WPS or AOSS™ and try starting again.</p> <p>If you do not know how to operate your wireless access point/router using WPS or AOSS™ see the documentation provided with your wireless access point/router, ask the manufacturer of your wireless access point/router or ask your network administrator.</p> 												
TS-08	<p>Two or more wireless access points that have WPS or AOSS™ enabled are detected.</p> <ul style="list-style-type: none"> - Confirm that only one wireless access point/router within range has the WPS or AOSS™ method active and try again. - Try starting again after a few minutes in order to avoid interference from other access points. 												



Install the drivers & software

(Windows® 2000 Professional/XP Home/XP Professional/Windows Vista®/Windows® 7)

20

Before you install

Make sure that your computer is ON and you are logged on with Administrator rights.

21

Install MFL-Pro Suite

- a** Put the supplied installation CD-ROM into your CD-ROM drive. Follow the on-screen instructions.
- b** The CD-ROM Top menu will appear. Click **Initial Installation**.
- c** Click **Install MFL-Pro Suite** and click **Yes** if you accept the license agreements. Follow the on-screen instructions.
- d** Choose **Wireless Network Connection**, and then click **Next**.
- e** When **Firewall/AntiVirus detected** screen appears, choose **Change the Firewall port settings to enable network connection and continue with the installation. (Recommended)** and click **Next**. (Not for Windows® 2000)

If you are using a firewall other than Windows® Firewall see the instructions provided with your firewall software for information on how to add the following network ports.

- For network scanning, add UDP port 54925.
- For network PC-Fax receiving, add UDP port 54926.
- If you still have trouble with your network connection, add UDP port 137.

f

Choose your machine from the list, and then click **Next**.



Note

- If your wireless settings fail, the **Wireless Device Setup Wizard** will appear during the installation of MFL-Pro Suite. Confirm your settings by following the on-screen instructions. If you encounter this failure, go to step **18-a** on page 19 and setup the wireless connection again.
- If you are using WEP and the LCD displayed *Connected* but your machine is not found, make sure you entered the WEP key correctly. The WEP key is case sensitive.

g

The installation of the Brother drivers will automatically start. The installation screens appear one after another.

h

When the **User's Guides** screen is displayed, click **View Manuals on the Web** if you want to download the manuals and follow the on-screen instructions. You can also view the manuals on the documentation CD-ROM.

i

When the **On-Line Registration** screen is displayed, make your selection and follow the on-screen instructions.

j

If you do not want to set your machine as the Default printer, uncheck **Set as Default Printer**.



22

Finish and restart

- a** Click **Finish** to restart your computer. After restarting the computer, you must be logged on with Administrator rights.
- b** In the **Check for Firmware Updates** screen, choose the firmware update setting you want and click **OK**.



Note

Internet access is required for the firmware update.

Finish

The installation is now complete.

Now go to

Proceed to **Install Optional Applications** on page 26.



Note

XML Paper Specification Printer Driver

The XML Paper Specification Printer Driver is the most suitable driver for Windows Vista® and Windows® 7 when printing from applications that use the XML Paper Specification documents. Please download the latest driver by accessing the Brother Solutions Center at <http://solutions.brother.com/>.



Install the drivers & software (Mac OS X 10.4.11, 10.5.x, 10.6.x)

20

Before you install

Make sure your machine is connected to the power and your Macintosh is ON. You must be logged on with Administrator rights.

21

Install MFL-Pro Suite

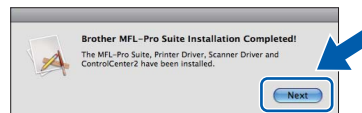
- a** Put the supplied installation CD-ROM into your CD-ROM drive.
- b** Double-click the **Start Here OSX** icon to install.
- c** Choose **Wireless Network Connection**, and then click **Next**.
- d** The Brother software will search for the Brother device in your wireless network. If the machine is configured for your network, choose the device you want to install, and then click **Next**.

Note

If your wireless settings fail, the **Wireless Device Setup Wizard** will appear during the installation of MFL-Pro Suite. Confirm your settings by following the on-screen instructions. If you encounter this failure, go to step **18-a** on page 19 and setup the wireless connection again.

- e** Please wait for the software to install, it will take about 30 seconds. After the installation, choose your machine from the list, and then click **OK**.

- f** When this screen appears, click **Next**.



- g** When the **Brother Support** screen appears, click **Close**.

Finish

The installation is now complete.

Note

If you began the setup from step **7** on page 5, go back to step **8** to continue the machine settings.


1 Install FaceFilter Studio/BookScan & Whiteboard Suite supported by Reallusion, Inc

Note

- The machine must be ON and connected to the computer.
- The computer must be connected to the Internet.
- Make sure you are logged on with Administrator rights.
- This application is not available for Windows Server® 2003/2008 series.

- Open the top menu again by ejecting and then reinserting the installation CD-ROM or by double-clicking the **start.exe** program from the root folder.
- The CD-ROM Top Menu will appear. Choose your language and then click **Additional Applications**.
- Click the button for the application you want to install.
- Go back to the **Additional Applications** screen to install more applications.

2 Install FaceFilter Studio Help

- To run FaceFilter Studio, go to **Start/All Programs/Reallusion/FaceFilter Studio** on your computer.
- Click the  button on the upper right corner of the screen.
- Click **Check for updates** to go to the Reallusion update web page.
- Click the **Download** button and choose a folder to save the file in.
- Close FaceFilter Studio before you start the installer for FaceFilter Studio Help. Double-click the downloaded file from the folder you specified and follow the on-screen instructions for installation.

Note

To view the complete FaceFilter Studio Help, choose **Start/All Programs/Reallusion/FaceFilter Studio/FaceFilter Studio Help** on your computer.

Restore the network settings to factory default

To restore all network settings of the internal Print/Scan server to factory default, please follow the steps below.

- a** Make sure the machine is not operating, then disconnect all the cables from the machine (except the power cord).
- b** Press **Menu**.
- c** Press **▲** or **▼** to choose **Network**.
Press **OK**.
- d** Press **▲** or **▼** to choose **Network Reset**.
Press **OK**.
- e** Press **1** to choose **Yes**.
- f** Press **1** to choose **Yes**.
- g** The machine will restart, re-connect cables once this is complete.

Entering Text for Wireless Settings

Most number keys have three or four letters printed on them. The keys for **0**, **#** and ***** do not have printed letters because they are used for special characters.

By pressing the correct number key repeatedly, you can access the character you want.

Inserting spaces

To enter a space in a name, press **►** twice between characters.

Making corrections

If you entered a character incorrectly and want to change it, press **◀** or **►** to move the cursor to the incorrect character, press **Clear**. Re-enter the correct character. You can also back up and insert a character.

Repeating characters

If you need to enter a character that is on the same key as the character before, press **►** to move the cursor to the right before you press the key again.

Special characters and symbols

Press *****, **#** or **0** repeatedly until you see the special character or symbol you want.

Press ***** for (space) ! " # \$ % & ' () * + , - . /

Press **#** for : ; < = > ? @ [] ^ _

Press **0** for 0 \ { | } ~

Trademarks

The Brother logo is a registered trademark of Brother Industries, Ltd.

Brother is a registered trademark of Brother Industries, Ltd.

Windows Vista is either a registered trademark or trademark of Microsoft Corporation in the United States and/or other countries.

Microsoft, Windows, Windows Server and Internet Explorer are registered trademarks of Microsoft Corporation in the United States and/or other countries.

Apple, Macintosh and Mac OS are trademarks of Apple Inc., registered in the United States and other countries.

Nuance, the Nuance logo, PaperPort and ScanSoft are trademarks or registered trademarks of Nuance Communications, Inc. or its affiliates in the United States and/or other countries.

FaceFilter Studio is a trademark of Reallusion, Inc.

AOSS is a trademark of Buffalo Inc.

WPA, WPA2, Wi-Fi Protected Access and Wi-Fi Protected Setup are either trademarks or registered trademarks of Wi-Fi Alliance in the United States and/or other countries.

Each company whose software title is mentioned in this manual has a Software License Agreement specific to its proprietary programs.

AirPrint is a trademark of Apple Inc.

Any trade names and product names of companies appearing on Brother products, related documents and any other materials are all trademarks or registered trademarks of those respective companies.

Compilation and Publication

Under the supervision of Brother Industries, Ltd., this manual has been compiled and published, covering the latest product descriptions and specifications.

The contents of this manual and the specifications of this product are subject to change without notice.

Brother reserves the right to make changes without notice in the specifications and materials contained herein and shall not be responsible for any damages (including consequential) caused by reliance on the materials presented, including but not limited to typographical and other errors relating to the publication.

Copyright and License

©2010 Brother Industries, Ltd. All rights reserved.

This product includes software developed by the following vendors:

©1983-1998 PACIFIC SOFTWARES, INC.

©2008 Devicescape Software, Inc.

This product includes the "KASAGO TCP/IP" software developed by ZUKEN ELMIC, Inc.



Get inspired. Double-click the Brother CreativeCenter icon on your desktop to access a FREE web site with many ideas and resources for personal and professional use.



<http://www.brother.com/creativecenter/>