

# Quick Setup Guide

# Start Here

MFC-J6910DW

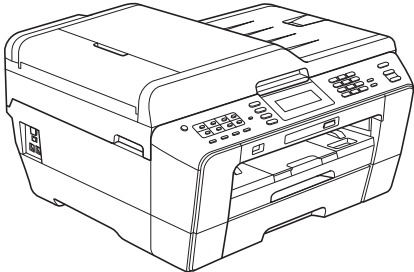

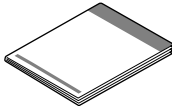
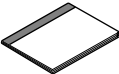
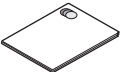





Please read Safety and Legal booklet first before you set up your machine. Then, please read this Quick Setup Guide for the correct setup and installation.

<b>WARNING</b>	<b>WARNING</b> indicates a potentially hazardous situation which, if not avoided, could result in death or serious injuries.
<b>CAUTION</b>	<b>CAUTION</b> indicates a potentially hazardous situation which, if not avoided, may result in minor or moderate injuries.

## 1 Unpack the machine and check the components

■ The components included in the box may differ depending on your country.

		 Introductory Ink Cartridges Black Yellow Cyan Magenta (Approx. 65% yield of the replacement cartridge) For details, see <i>Consumable items</i> in the <i>Basic User's Guide</i> .		 Quick Setup Guide
 Basic User's Guide	 Safety and Legal booklet	 Installation CD-ROM Documentation CD-ROM	 Power Cord	 (for UK) (for others) Telephone Line Cord

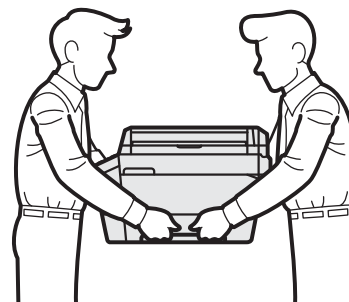
### WARNING

Plastic bags are used in the packing of your machine. Plastic bags are not toys. To avoid the danger of suffocation, keep these bags away from babies and children and dispose of them properly.

### CAUTION

To prevent injuries when moving or lifting this machine, make sure to use at least two people. Be careful not to pinch your fingers when you set the machine back down.

- Remove the protective tape and film covering the machine, and also from the LCD.
- Make sure you have all components.



### Note

- Save all packing materials and the box in case for any reason you must ship your machine.
- You need to purchase the correct interface cable for the interface you want to use (for USB or network connection).

#### USB cable

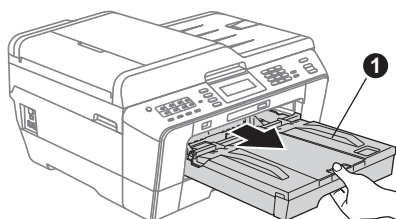
It is recommended to use a USB 2.0 cable (Type A/B) that is no more than 2 metres long (cable not included).

#### Network cable

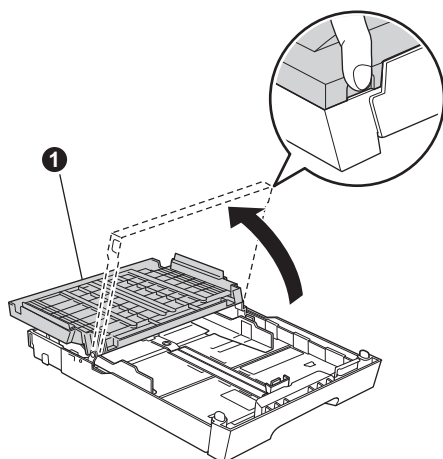
Use a straight-through Category5 (or greater) twisted-pair cable for 10BASE-T or 100BASE-TX Fast Ethernet Network.

## 2 Load plain A4 paper

- a** Pull paper tray #1, the upper tray ① completely out of the machine.

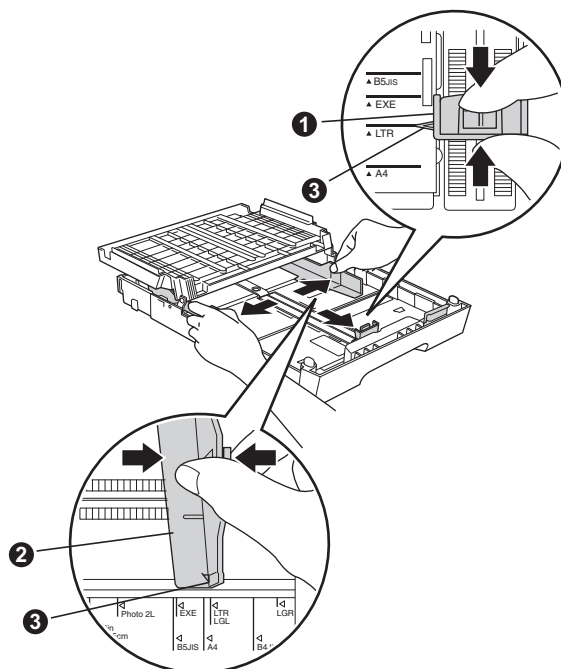


- b** Open the output paper tray cover ①.



- c** With both hands, gently press and slide the paper length guide ① and then the paper side guides ② to fit the paper size.

Make sure that the triangular marks ③ on the paper length guide ① and paper side guides ② line up with the mark for the paper size you are using.

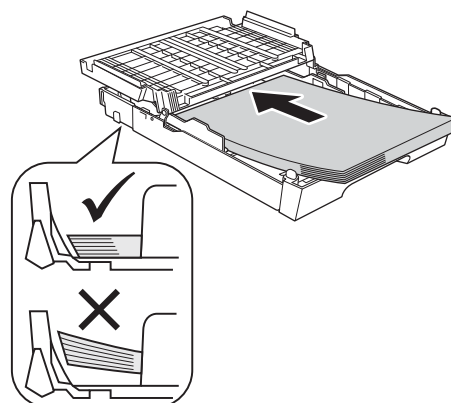


- d** Fan the stack of paper well to avoid paper jams and misfeeds.

- e** Gently put the paper into paper tray #1 print side down and top edge first.

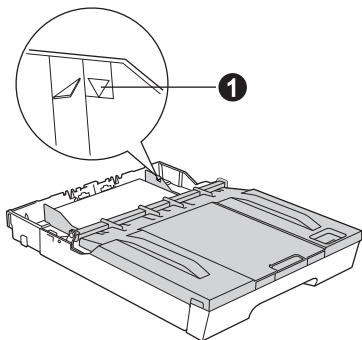
### Note

DO NOT push the paper in too far.

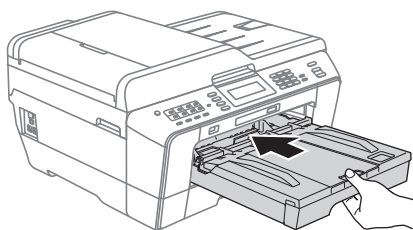


**f** Gently adjust the paper side guides to the paper with both hands. Make sure that the paper side guides touch the edges of the paper.

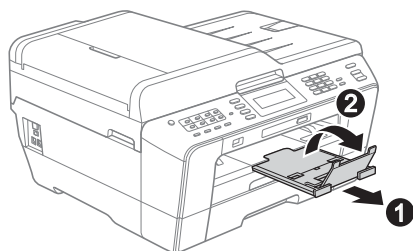
**g** Close the output paper tray cover. Check that the paper is flat in the tray and below the maximum paper mark ❶.



**h** Slowly push the paper tray completely into the machine.



**i** While holding the paper tray in place, pull out the paper support ❶ until it clicks, and then unfold the paper support flap ❷.



#### Note

For information about tray #2 (the lower tray), see Loading paper in paper tray #2 in chapter 2 of the Basic User's Guide.

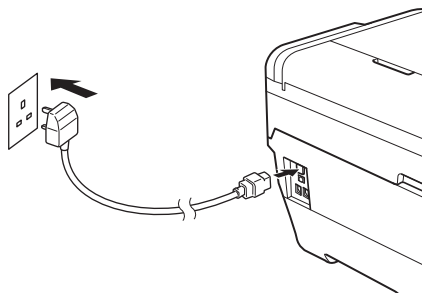
## 3

### Connect the power cord and telephone line

#### ! IMPORTANT

**DO NOT** connect the USB cable yet (if you are using a USB cable).

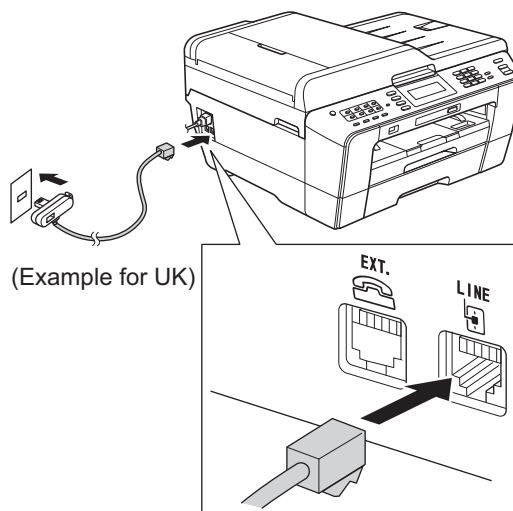
**a** Connect the power cord.



#### ! WARNING

The machine must be fitted with an earthed plug.

**b** Connect the telephone line cord. Connect one end of the telephone line cord to the socket on the machine marked **LINE** and the other end to a telephone wall socket.



## ⚠ WARNING

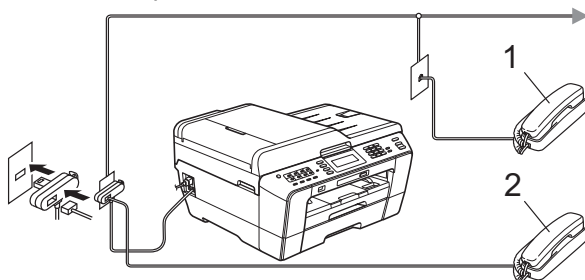
Since the machine is grounded through the power outlet, you can protect yourself from potentially hazardous electrical conditions on the telephone network by keeping the power cord connected to your machine when you connect it to a telephone line. Similarly, you can protect yourself when you want to move your machine by disconnecting the telephone line first and then the power cord.

## ! IMPORTANT

The telephone line cord **MUST** be connected to the socket on the machine marked **LINE**.

### 📝 Note

If you are sharing one telephone line with an external telephone, connect it as shown below.



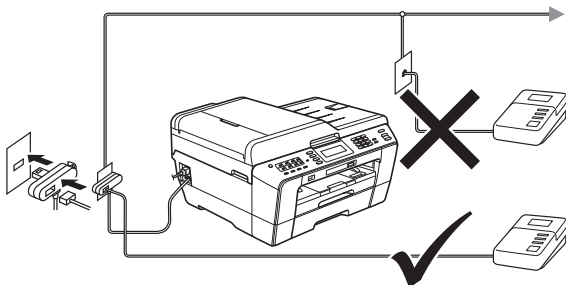
1 Extension telephone

2 External telephone

Please make sure you use an external telephone with a cable no more than 3 metres long.

### 📝 Note

If you are sharing one telephone line with an external telephone answering machine, connect it as shown below.



Set the receive mode to *External TAD* if you have an external answering machine. See Choose a Receive Mode on page 8. For additional details, see Connecting an external TAD (telephone answering device) in chapter 6 of the Basic User's Guide.

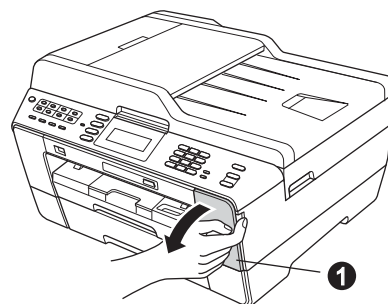
## 4

## Install the ink cartridges

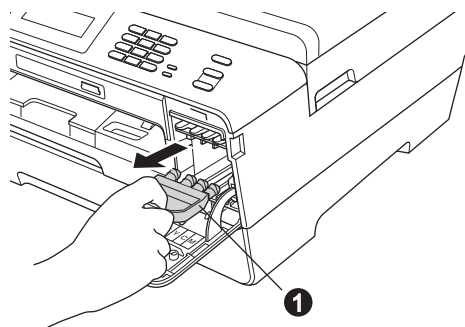
### 📝 Note

Make sure you install the *Introductory ink cartridges* included with your machine first.

- a** Make sure that the power is turned on. The LCD shows *No Ink Cartridge*.
- b** Open the ink cartridge cover ❶.



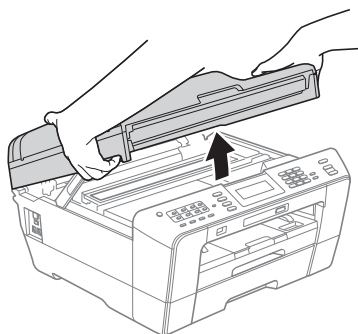
- c** Remove the orange protective part ❶.



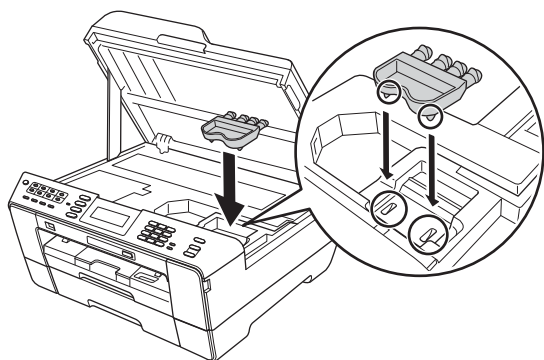
### 📝 Note

Do not throw away the orange protective part. You will need it if you transport the machine.

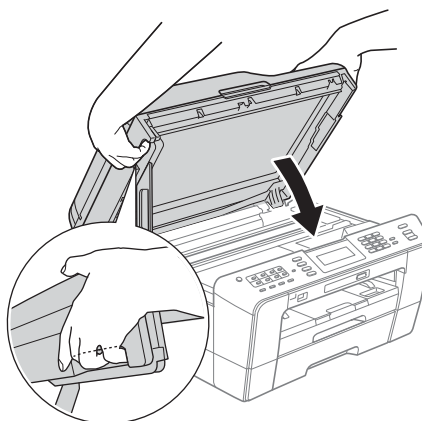
- d** Lift the scanner cover into the open position.



- e** Store the orange protective part in the holder inside the machine as shown. Make sure that the two projections on the bottom of the orange protective part fit in the two slots in the holder.



- f** Gently close the scanner cover using the finger holds on each side.

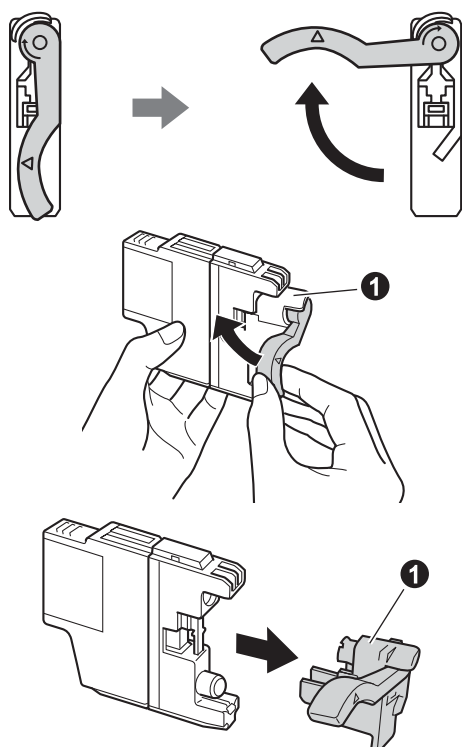


### **! WARNING**

Be careful not to trap your fingers under the scanner cover.

Always use the finger holds provided on each side of the scanner cover when opening and closing it.

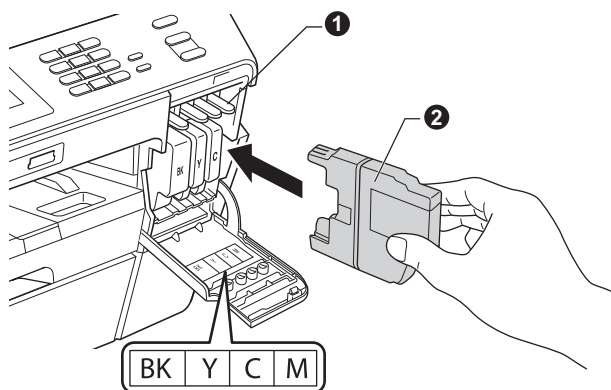
- g** Unpack the ink cartridge. Turn the green release lever on the orange protective packing **1** clockwise until it clicks to release the vacuum seal. Then remove the orange protective packing **1** as shown.



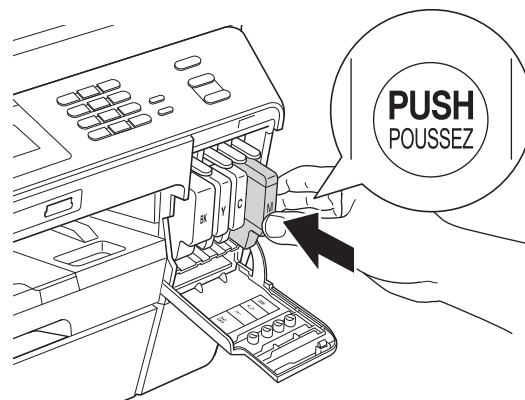
**! IMPORTANT**

**DO NOT shake the ink cartridges. If ink stains your skin or clothing, wash with soap or detergent at once.**

- h** Take care to match the colour of the lever **1** with the cartridge colour **2**, as shown in the diagram below. Install each ink cartridge in the direction of the arrow on the label.



- i** Gently push the back of the ink cartridge marked "PUSH" until it clicks. After all the ink cartridges are installed close the ink cartridge cover.



**Note**

*The machine will prepare the ink tube system for printing. This process will take approximately four minutes. Do not turn off the machine.*

**! CAUTION**

If ink gets in your eyes, wash it out with water at once and call a doctor if you are concerned.

# 5

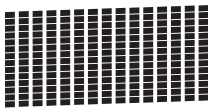
## Check the print quality

### Note

Make sure you put paper in the paper tray (tray #1, the upper tray) for the initial setup.

- a** When the preparation process has finished, the LCD shows `Set Paper` and `Press Start`. Press **Colour Start**.
- b** Check the quality of the four colour blocks on the sheet. (black/yellow/cyan/magenta)
- c** If all lines are clear and visible, press `Yes` to finish the quality check and go to step **6**.

OK



If you can see missing short lines, press `No` and follow the steps on the LCD.

Poor



# 6

## Set the paper settings

For your machine to produce the best print quality and feed the correct paper size, the paper type and size must be set to match the paper in the tray. For details on the types and sizes of paper supported, see *Paper Size and Type* in chapter 2 of the *Basic User's Guide*.

### Note

You can change the default tray the machine will use for printing copies or received faxes. (See Tray use in Copy mode or Tray use in Fax mode in chapter 2 of the Basic User's Guide.)

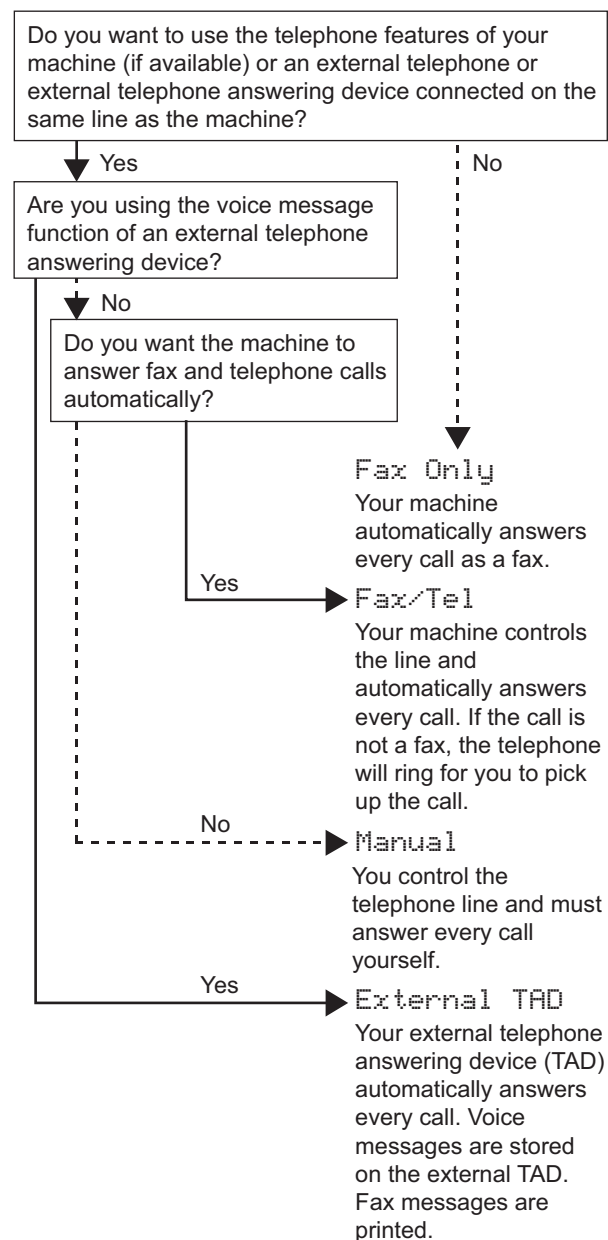
- a** When the LCD shows to set the paper size and paper type, press **Tray Setting**.
- b** Press `Tray#1` or `Tray#2` for paper size, or the button below `Tray#1` for paper type of Tray#1.
- c** Press the type or size of paper you are using.
- d** Press **Stop/Exit**.

### Note

To cancel, press **Stop/Exit**. You can set the paper settings later.

## 7 Choose a Receive Mode

There are four possible receive modes: Fax Only, Fax/Tel, Manual and External TAD. For details, see *Using Receive Modes* in chapter 5 of the *Basic User's Guide*.



- a** Press MENU.
- b** Press ▲ or ▼ to display Initial Setup.
- c** Press Initial Setup.
- d** Press Receive Mode.
- e** Press Fax Only, Fax/Tel, External TAD or Manual.
- f** Press Stop/Exit.

## 8 Set the date and time

The machine displays the date and time, and if you set up the station ID, it will add it to each fax you send.

- a** Press MENU.
- b** Press ▲ or ▼ to display Initial Setup.
- c** Press Initial Setup.
- d** Press Date&Time.
- e** Enter the last two digits of the year on the Touchscreen, and then press OK.



(e.g. Enter 1 1 for 2011.)

- f** Repeat for month/day/time in 24-hour format.
- g** Press Stop/Exit.



## 9 Enter personal information (Station ID)

You should store your name and fax number to be printed on all fax pages that you send.  
For details, see *Entering Text* in *Appendix C* of the *Basic User's Guide*.

- a** Press **MENU**.
- b** Press **▲** or **▼** to display **Initial Setup**.
- c** Press **Initial Setup**.
- d** Press **Station ID**.
- e** Enter your fax number (up to 20 digits) on the Touchscreen, and then press **OK**.
- f** Enter your name (up to 20 characters) using the Touchscreen, and then press **OK**.

### Note

- Press **Alt** to cycle between letters, numbers and special characters. (The characters available may differ depending on your country.)
- If you need to enter a character that is on the same button as the character before, press **▶** to move the cursor to the right.
- If you entered a character incorrectly and want to change it, press **◀** or **▶** to move the cursor to the incorrect character, press **✕**.

- g** Press **Stop/Exit**.

### Note

If you make a mistake and want to start again, press **Stop/Exit** and go back to **a**.

## 10 Fax Transmission Report

Your Brother machine is equipped with a Transmission Verification Report that can be used as confirmation that you sent a fax. This report lists the name or fax number of the receiving party, the date, time, and duration of the transmission, the number of pages transmitted, and whether or not the transmission was successful. If you want to use the Fax Transmission Report feature, see *Transmission Verification Report* in *chapter 4* of the *Basic User's Guide*.

## 11 Set Tone or Pulse dialling mode

Your machine comes set for Tone dialling service. If you have Pulse dialling service (rotary), you need to change the dialling mode.

- a** Press **MENU**.
- b** Press **▲** or **▼** to display **Initial Setup**.
- c** Press **Initial Setup**.
- d** Press **▲** or **▼** to display **Tone/Pulse**.
- e** Press **Tone/Pulse**.
- f** Press **Pulse** (or **Tone**).
- g** Press **Stop/Exit**.

## 12 Set the telephone line type

If you are connecting the machine to a line that features PBX or ISDN to send and receive faxes, it is necessary to change the telephone line type accordingly by completing the following steps.

- a** Press **MENU**.
- b** Press **▲** or **▼** to display **Initial Setup**.
- c** Press **Initial Setup**.
- d** Press **▲** or **▼** to display **Phone Line Set**.
- e** Press **Phone Line Set**.
- f** Press **Normal**, **PBX** or **ISDN**.

### Note

If you choose **PBX** the machine shows the step of the **Dial Prefix** setting. For information, see *Setting the Telephone Line Type* in chapter 6 of the Basic User's Guide.

- g** Press **Stop/Exit**.

### PBX and TRANSFER

The machine is initially set to **Normal**, which lets the machine connect to a standard PSTN (Public Switched Telephone Network) line. However, many offices use a central telephone system or Private Branch Exchange (PBX). Your machine can be connected to most types of PBX. The machine's recall feature supports timed break recall only (TBR). TBR will work with most PBX systems allowing you to gain access to an outside line, or transfer calls to another extension. The feature works when the **Tel/R** key is pressed.

## 13 Set the telephone line compatibility

If you are connecting the machine to a VoIP service (over the Internet) you need to change the compatibility setting.

### Note

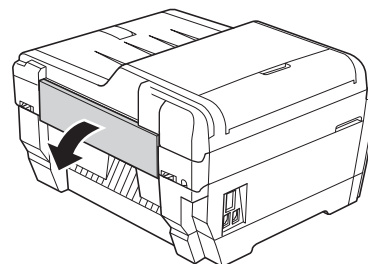
If you are using an analogue telephone line you can skip this step.

- a** Press **MENU**.
- b** Press **▲** or **▼** to display **Initial Setup**.
- c** Press **Initial Setup**.
- d** Press **▲** or **▼** to display **Compatibility**.
- e** Press **Compatibility**.
- f** Press **Basic** (for VoIP).
- g** Press **Stop/Exit**.

## 14 Manual Feed Slot

You can load special print media into this slot. (Please note that *only one sheet* can be used at a time.) Use the manual feed slot to print or copy on envelopes, labels or thicker paper.

For details, see *Loading paper in the manual feed slot* in chapter 2 of the Basic User's Guide.



# 15

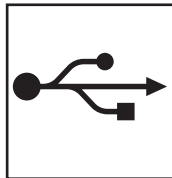
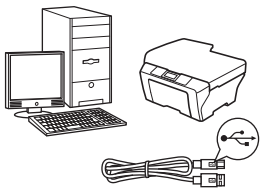
## Choose your connection type

These installation instructions are for Windows® 2000 Professional/XP Home/XP Professional (x32/x64 Edition), Windows Vista®, Windows® 7, and Mac OS X (versions 10.4.11, 10.5.x and 10.6.x).



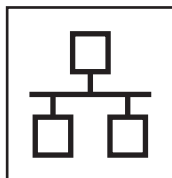
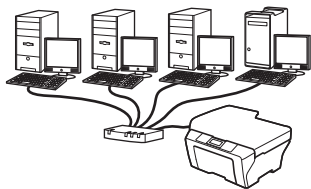
### Note

For Windows Server® 2003 (x32/x64 Edition)/2008/2008 R2, visit your model page at <http://solutions.brother.com/>.



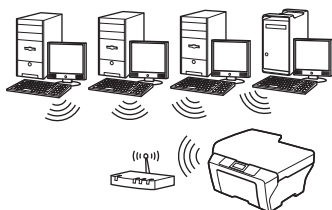
### For USB interface cable

Windows®, go to page 12  
Macintosh, go to page 15



### For Wired Network

Windows®, go to page 17  
Macintosh, go to page 21



### For Wireless Network

Windows® and Macintosh,  
go to page 24

Windows®  
USB  
Macintosh

Windows®  
Wired Network  
Macintosh

Wireless Network



## For USB interface users

(Windows® 2000 Professional/XP Home/XP Professional/Windows Vista®/Windows® 7)

# 16

## Before you install

Make sure that your computer is ON and you are logged on with Administrator rights.

### ! IMPORTANT

- **DO NOT** connect the USB cable yet.
- If there are any programs running, close them.

### Note

- For the latest drivers and information, visit <http://solutions.brother.com/>.
- The screens may differ depending on your operating system.
- The installation CD-ROM includes ScanSoft™ PaperPort™ 12SE. This software supports Windows® XP Home (SP3 or greater), XP Professional x32 Edition (SP3 or greater), XP Professional x64 Edition (SP2 or greater), Windows Vista® (SP2 or greater) and Windows® 7. Update to the latest Windows® Service Pack before installing MFL-Pro Suite. For Windows® 2000 (SP4 or greater), when the ScanSoft™ PaperPort™ 11SE download screen appears during the installation of MFL-Pro Suite, follow the on-screen instructions.

# 17

## Install MFL-Pro Suite

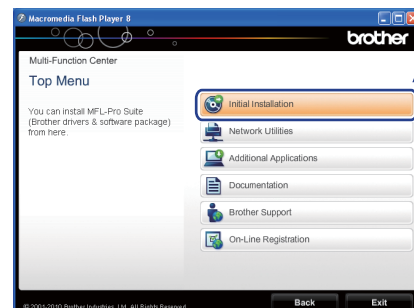
- a** Put the supplied installation CD-ROM into your CD-ROM drive. If the model name screen appears, choose your machine. If the language screen appears, choose your language.

### Note

If the Brother screen does not appear automatically, go to **My Computer (Computer)**, double-click the CD-ROM icon, and then double-click **start.exe**.

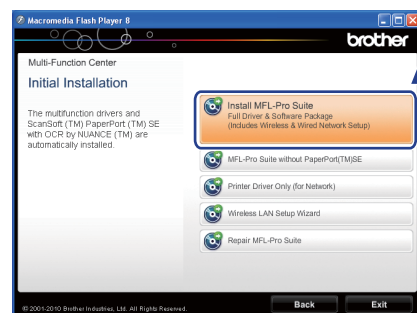
### b

The CD-ROM Top menu will appear. Click **Initial Installation**.



### c

Click **Install MFL-Pro Suite** and click **Yes** if you accept the license agreements. Follow the on-screen instructions.



### Note

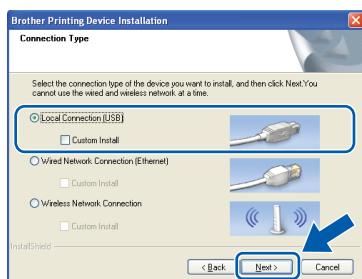
- If this screen appears, click **OK** and restart your computer.



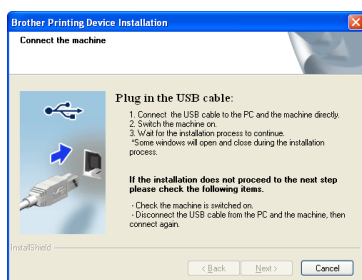
- If the installation does not continue automatically, open the top menu again by ejecting and then reinserting the CD-ROM or double-click the **start.exe** program from the root folder, and continue from **b** to install MFL-Pro Suite.
- For Windows Vista® and Windows® 7, when the **User Account Control** screen appears, click **Allow** or **Yes**.



- d** Choose **Local Connection**, and then click **Next**. The installation continues.

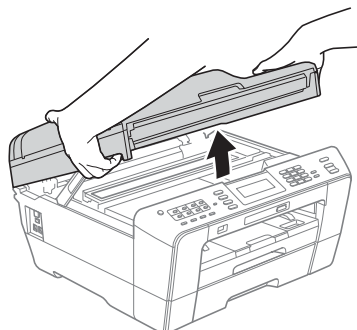


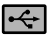
- e** When this screen appears, go to the next step.

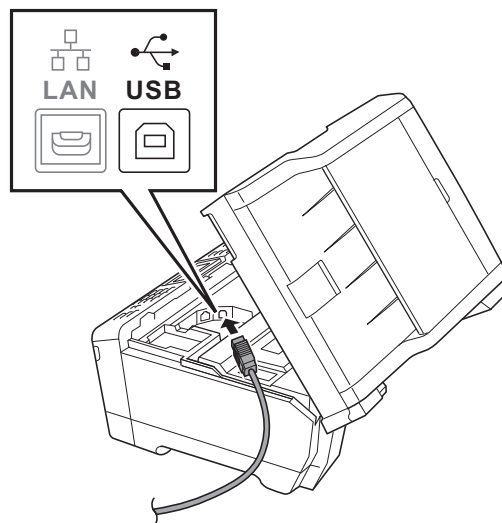


## 18 Connect the USB cable

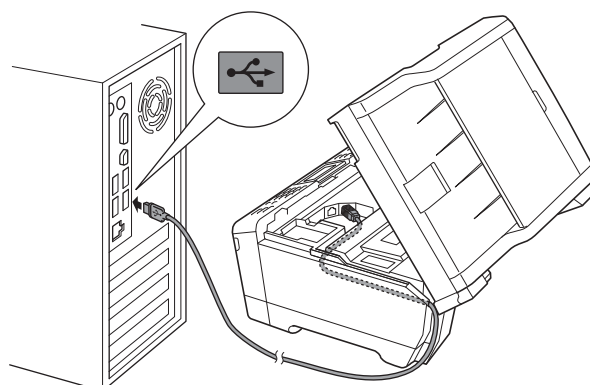
- a** Lift the scanner cover into the open position.



- b** Connect the USB cable to the USB socket marked with a  symbol. You will find the USB socket inside the machine on the right as shown below.



- c** Carefully guide the USB cable into the cable channel and out the back of the machine. Connect the cable to your computer.

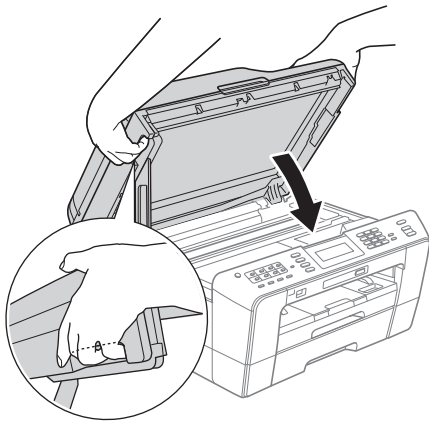


### ! IMPORTANT

**Make sure that the cable does not restrict the cover from closing, or an error may occur.**



- d** Gently close the scanner cover using the finger holds on each side.



### ! WARNING

Be careful not to trap your fingers under the scanner cover.

Always use the finger holds provided on each side of the scanner cover when opening and closing it.

- e** The installation will continue automatically. The installation screens appear one after another.

### ! IMPORTANT

**DO NOT** cancel any of the screens during the installation. It may take a few seconds for all screens to appear.

#### Note

For Windows Vista® and Windows® 7, when the **Windows Security** screen appears, click the check box and click **Install** to complete the installation correctly.

- f** When the **User's Guides** screen is displayed, click **View Manuals on the Web** if you want to download the manuals and follow the on-screen instructions. You can also view the manuals on the documentation CD-ROM.
- g** When the **On-Line Registration** screen is displayed, make your selection and follow the on-screen instructions.
- h** If you do not want to set your machine as the Default printer, uncheck **Set as Default Printer**.

## 19 Finish and restart

- a** Click **Finish** to restart your computer. After restarting the computer, you must be logged on with Administrator rights.



#### Note

- If an error message appears during the software installation, run the **Installation Diagnostics** located in **Start/All Programs/Brother/MFC-JXXX** (where MFC-JXXX is your model name).
- Depending on your security settings, a Windows Security or antivirus software window may appear when using the machine or its software. Please allow or permit the window to continue.

- b** In the **Check for Firmware Updates** screen, choose the firmware update setting you want and click **OK**.

#### Note

Internet access is required for the firmware update.

# Finish

The installation is now complete.

### Now go to

Proceed to **Install Optional Applications** on page 36.

#### Note

##### **XML Paper Specification Printer Driver**

The XML Paper Specification Printer Driver is the most suitable driver for Windows Vista® and Windows® 7 when printing from applications that use the XML Paper Specification documents. Please download the latest driver by accessing the Brother Solutions Center at <http://solutions.brother.com/>.



## For USB interface users (Mac OS X 10.4.11, 10.5.x, 10.6.x)

# 16

## Before you install

Make sure your machine is connected to the power and your Macintosh is ON. You must be logged on with Administrator rights.



### Note

- For the latest drivers and information on the Mac OS X you are using, visit <http://solutions.brother.com/>.
- For Mac OS X 10.4.0 to 10.4.10 users, upgrade to Mac OS X 10.4.11 - 10.6.x.

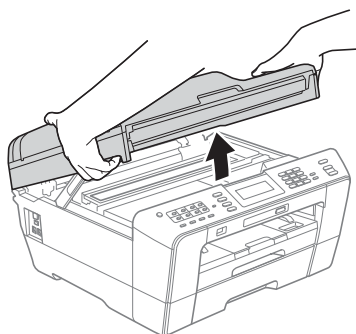
# 17

## Connect the USB cable


### ! IMPORTANT

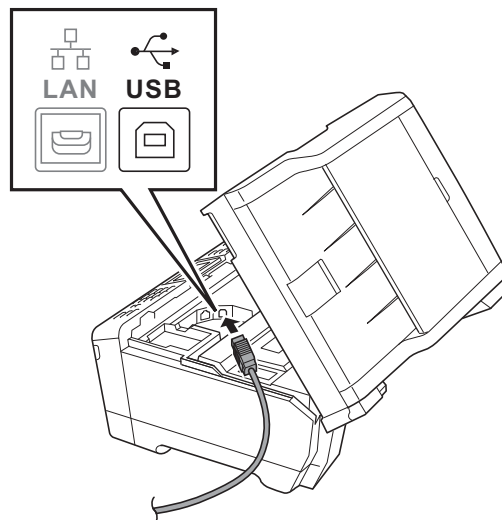
- **DO NOT** connect the machine to a USB port on a keyboard or a non-powered USB hub.
- Connect the machine directly to your Macintosh.

- a** Lift the scanner cover into the open position.



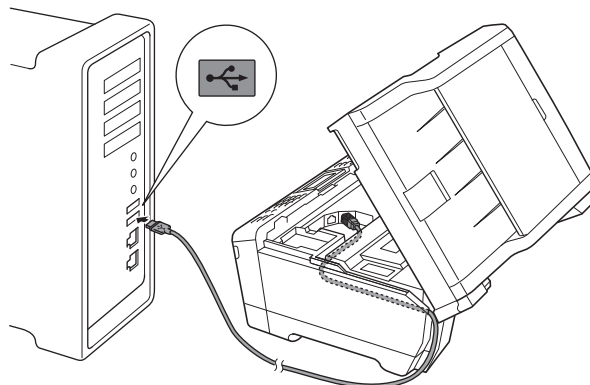
### b

Connect the USB cable to the USB socket marked with a  symbol. You will find the USB socket inside the machine on the right as shown below.



### c

Carefully guide the USB cable into the cable channel and out the back of the machine. Connect the cable to your Macintosh.



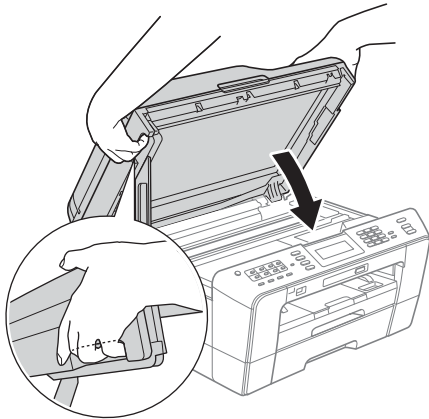
### ! IMPORTANT

**Make sure that the cable does not restrict the cover from closing, or an error may occur.**





- d** Gently close the scanner cover using the finger holds on each side.



## WARNING

Be careful not to trap your fingers under the scanner cover.

Always use the finger holds provided on each side of the scanner cover when opening and closing it.

## 18 Install MFL-Pro Suite

- a** Put the supplied installation CD-ROM into your CD-ROM drive.
- b** Double-click the **Start Here OSX** icon to install.

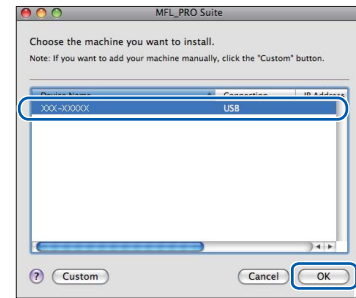


- c** Choose **Local Connection**, and then click **Next**. Follow the on-screen instructions.

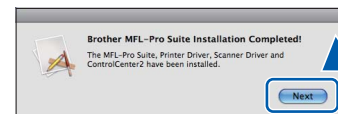


- d** Please wait for the software to install, it will take about 30 seconds. After the installation, the Brother software will search for the Brother device.

- e** Choose the machine from the list, and then click **OK**.



- f** When this screen appears, click **Next**.

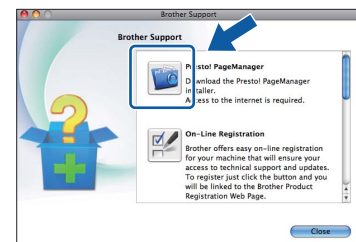


- OK!** The installation of MFL-Pro Suite is now complete.  
Go to step 19.

## 19 Download and install Presto! PageManager

When Presto! PageManager is installed OCR capability is added to Brother ControlCenter2. You can easily scan, share and organize photos and documents using Presto! PageManager.

- a** On the **Brother Support** screen, click the **Presto! PageManager** icon to go to the Presto! PageManager download site, and follow the on-screen instructions.



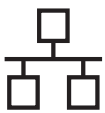
## Finish

The installation is now complete.

### Note

To use Image Capture for scanning on Mac OS X 10.6.x, please install the CUPS Printer Driver, which can be downloaded from the Brother Solutions Center at <http://solutions.brother.com/>.





## For wired network interface users

(Windows® 2000 Professional/XP Home/XP Professional/Windows Vista®/Windows® 7)

### 16 Before you install

Make sure that your computer is ON and you are logged on with Administrator rights.

#### ! IMPORTANT

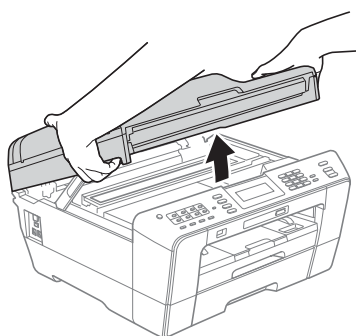
If there are any programs running, close them.


#### Note

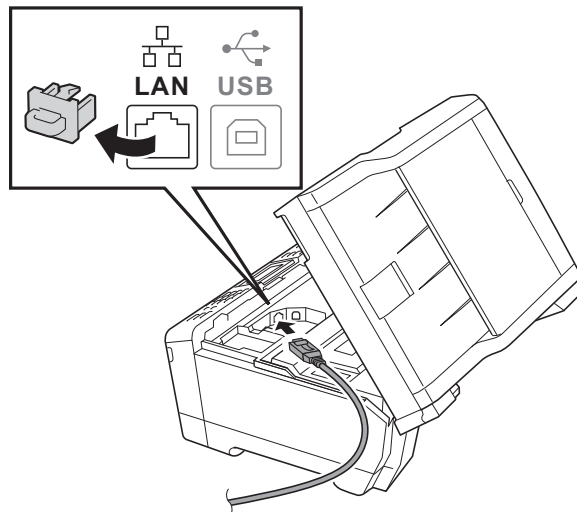
- For the latest drivers and information, visit <http://solutions.brother.com/>.
- The screens may differ depending on your operating system.
- The installation CD-ROM includes ScanSoft™ PaperPort™ 12SE. This software supports Windows® XP Home (SP3 or greater), XP Professional x32 Edition (SP3 or greater), XP Professional x64 Edition (SP2 or greater), Windows Vista® (SP2 or greater) and Windows® 7. Update to the latest Windows® Service Pack before installing MFL-Pro Suite. For Windows® 2000 (SP4 or greater), when the ScanSoft™ PaperPort™ 11SE download screen appears during the installation of MFL-Pro Suite, follow the on-screen instructions.

### 17 Connect the network cable

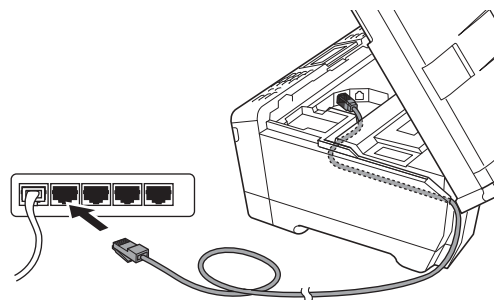
- a** Lift the scanner cover into the open position.



- b** You will find the LAN socket marked with a  symbol inside the machine on the left as shown below. Remove the protective cap and connect the network cable to the LAN socket.



- c** Carefully guide the network cable into the cable channel and out the back of the machine. Connect the cable to your network.

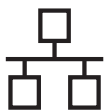


#### ! IMPORTANT

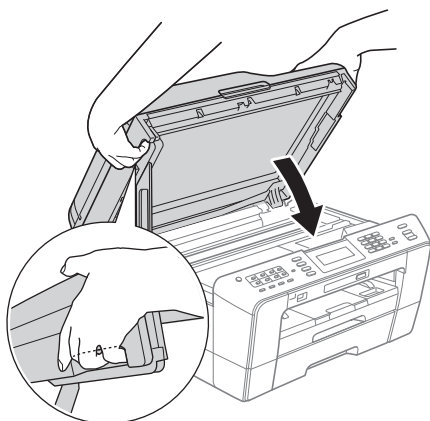
Make sure that the cable does not restrict the cover from closing, or an error may occur.

#### Note

If both USB and LAN cables are being used, guide both cables through the cable channel with one on top of the other.



- d** Gently close the scanner cover using the finger holds on each side.



## WARNING

Be careful not to trap your fingers under the scanner cover.

Always use the finger holds provided on each side of the scanner cover when opening and closing it.

### Note

If you have previously set up your machine for a wireless network and then want to set it up on a wired network, you should check that the machine's *Network I/F* is set to *Wired LAN*. The wireless network interface will become inactive with this setting.

On your machine, press **MENU**.

Press **Network**.

Press **▲** or **▼** to display *Network I/F*.

Press **Network I/F**.

Press **Wired LAN**.

Press **Stop/Exit**.

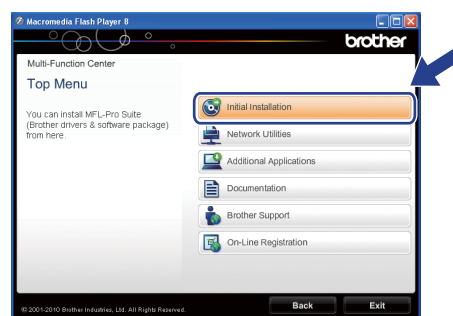
## 18 Install MFL-Pro Suite

- a** Put the supplied installation CD-ROM into your CD-ROM drive. If the model name screen appears, choose your machine. If the language screen appears, choose your language.

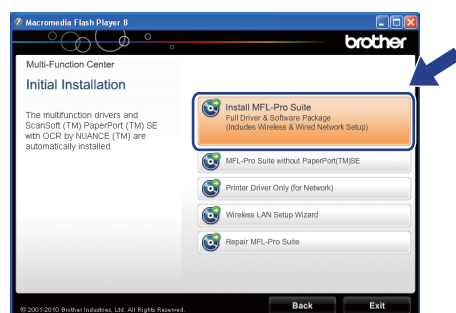
### Note

If the Brother screen does not appear automatically, go to **My Computer (Computer)**, double-click the CD-ROM icon, and then double-click **start.exe**.

- b** The CD-ROM Top menu will appear. Click **Initial Installation**.



- c** Click **Install MFL-Pro Suite** and click **Yes** if you accept the license agreements. Follow the on-screen instructions.



### Note

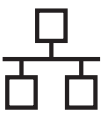
- If this screen appears, click **OK** and restart your computer.



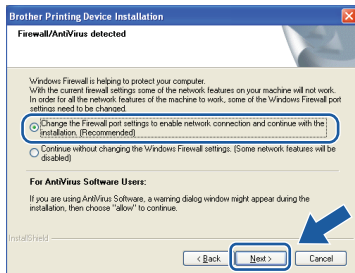
- If the installation does not continue automatically, open the top menu again by ejecting and then reinserting the CD-ROM or double-click the **start.exe** program from the root folder, and continue from **b** to install MFL-Pro Suite.
- For Windows Vista® and Windows® 7, when the **User Account Control** screen appears, click **Allow** or **Yes**.

- d** Choose **Wired Network Connection**, and then click **Next**.

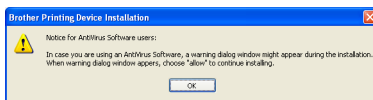




- e** When this screen appears, choose **Change the Firewall port settings to enable network connection and continue with the installation. (Recommended)** and click **Next**. (Not for Windows® 2000)



If you are using a firewall other than Windows® Firewall or Windows® Firewall is off, this screen may appear.

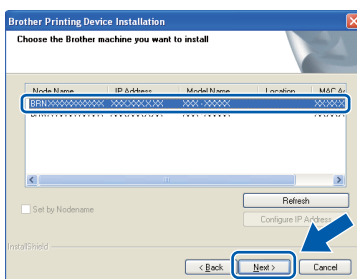


See the instructions provided with your firewall software for information on how to add the following network ports.

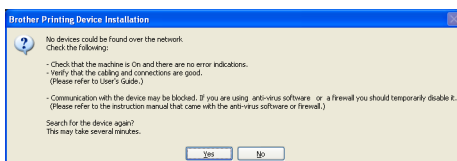
- For network scanning, add UDP port 54925.
- For network PC-Fax receiving, add UDP port 54926.
- If you still have trouble with your network connection, add UDP port 137.

## Note

- If there is more than one machine connected to the network, choose your machine from the list, and then click **Next**.  
*This window will not appear if there is only one machine connected on the network, it will be chosen automatically.*



- If your machine is not found over the network, the following screen will appear.



Confirm your settings by following the on-screen instructions.

## f

The installation of the Brother drivers will automatically start. The installation screens appear one after another.

## ! IMPORTANT

**DO NOT cancel any of the screens during the installation. It may take a few seconds for all screens to appear.**

## Note

For Windows Vista® and Windows® 7, when the **Windows Security** screen appears, click the check box and click **Install** to complete the installation correctly.

## g

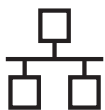
When the **User's Guides** screen is displayed, click **View Manuals on the Web** if you want to download the manuals and follow the on-screen instructions. You can also view the manuals on the documentation CD-ROM.

## h

When the **On-Line Registration** screen is displayed, make your selection and follow the on-screen instructions.

## i

If you do not want to set your machine as the Default printer, uncheck **Set as Default Printer**.



## 19

### Finish and restart

- a** Click **Finish** to restart your computer. After restarting the computer, you must be logged on with Administrator rights.



#### Note

- If an error message appears during the software installation, run the **Installation Diagnostics** located in **Start/All Programs/Brother/MFC-JXXX** (where MFC-JXXX is your model name).
- Depending on your security settings, a Windows Security or antivirus software window may appear when using the machine or its software. Please allow or permit the window to continue.

- b** In the **Check for Firmware Updates** screen, choose the firmware update setting you want and click **OK**.

#### Note

Internet access is required for the firmware update.

## 20

### Install MFL-Pro Suite on additional computers (if needed)

If you want to use your machine with multiple computers on the network, install MFL-Pro Suite on each computer. Go to step **18** on page 18. Also see step **16** on page 17 before you install.

#### Note

##### Network license (Windows®)

This product includes a PC license for up to 2 Users. This license supports the installation of the MFL-Pro Suite including ScanSoft™ PaperPort™ 12SE or ScanSoft™ PaperPort™ 11SE on up to 2 PCs on the network. If you want to use more than 2 PCs with ScanSoft™ PaperPort™ 12SE or ScanSoft™ PaperPort™ 11SE installed, please purchase the Brother NL-5 pack which is a multiple PC license agreement pack for up to 5 additional users. To purchase the NL-5 pack, contact your authorized Brother dealer or contact Brother customer service.

## Finish

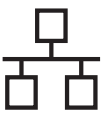
The installation is now complete.

Now go to

Proceed to Install Optional Applications on page 36.

#### Note

- If you specify an IP Address for the machine, you must set the Boot Method to Static by using the control panel. For more information, see the Network User's Guide.
- **XML Paper Specification Printer Driver**  
The XML Paper Specification Printer Driver is the most suitable driver for Windows Vista® and Windows® 7 when printing from applications that use the XML Paper Specification documents. Please download the latest driver by accessing the Brother Solutions Center at <http://solutions.brother.com/>.



## For wired network interface users (Mac OS X 10.4.11, 10.5.x, 10.6.x)

### 16 Before you install

Make sure your machine is connected to the power and your Macintosh is ON. You must be logged on with Administrator rights.

#### Note

- For the latest drivers and information on the Mac OS X you are using, visit <http://solutions.brother.com/>.
- For Mac OS X 10.4.0 to 10.4.10 users, upgrade to Mac OS X 10.4.11 - 10.6.x.
- If you have previously set up your machine for a wireless network and then want to set it up on a wired network, you should check that the machine's Network I/F is set to *Wired LAN*. The wireless network interface will become inactive with this setting.

On your machine, press **MENU**.

Press **Network**.

Press **▲** or **▼** to display **Network I/F**.

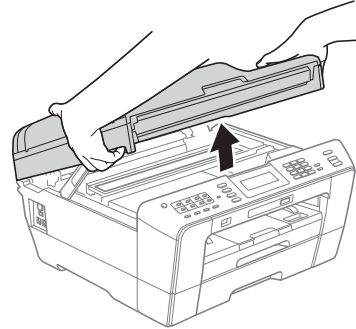
Press **Network I/F**.


Press **Wired LAN**.

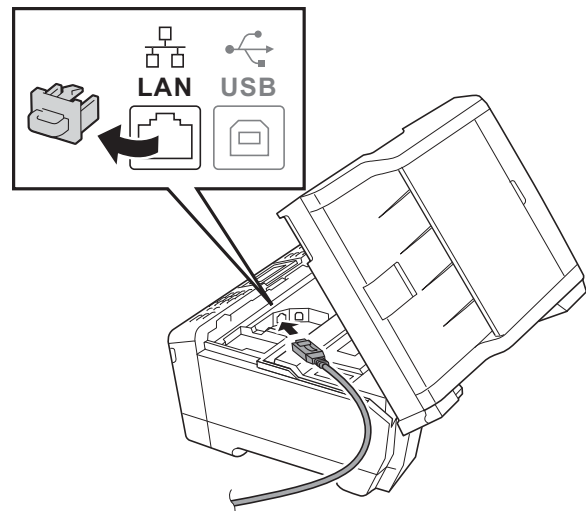
Press **Stop/Exit**.

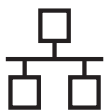
### 17 Connect the network cable

- a** Lift the scanner cover into the open position.

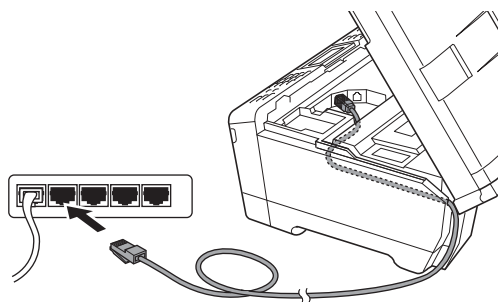


- b** You will find the LAN socket marked with a  symbol inside the machine on the left as shown below. Remove the protective cap and connect the network cable to the LAN socket.





- c** Carefully guide the network cable into the cable channel and out the back of the machine. Connect the cable to your network.



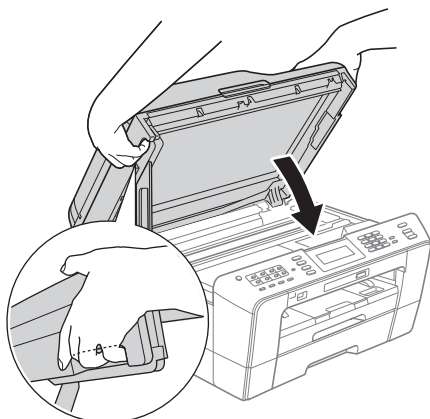
## ! IMPORTANT

Make sure that the cable does not restrict the cover from closing, or an error may occur.

## Note

If both USB and LAN cables are being used, guide both cables through the cable channel with one on top of the other.

- d** Gently close the scanner cover using the finger holds on each side.



## ! WARNING

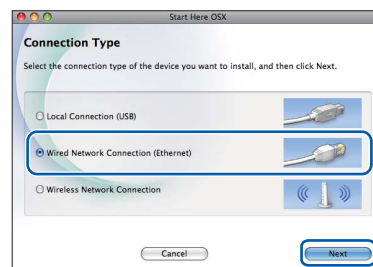
Be careful not to trap your fingers under the scanner cover. Always use the finger holds provided on each side of the scanner cover when opening and closing it.

## 18 Install MFL-Pro Suite

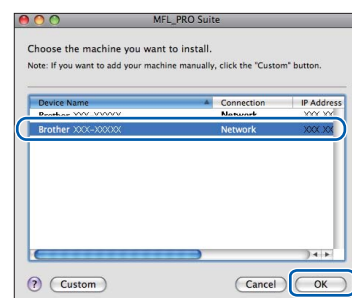
- a** Put the supplied installation CD-ROM into your CD-ROM drive.
- b** Double-click the **Start Here OSX** icon to install.



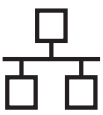
- c** Choose **Wired Network Connection**, and then click **Next**. Follow the on-screen instructions.



- d** Please wait for the software to install, it will take about 30 seconds. After the installation, the Brother software will search for the Brother device.
- e** If the machine is configured for your network, choose the machine from the list, and then click **OK**.

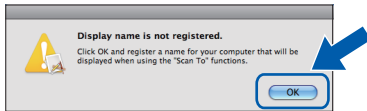




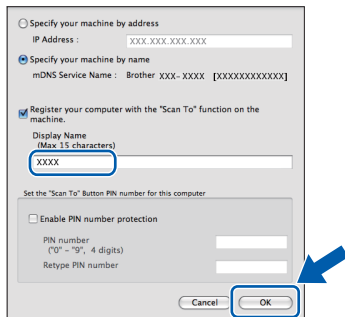


## Note

- If your machine is not found over the network, confirm your network settings.
- You can find your machine's MAC Address (Ethernet Address) and IP Address by printing out the Network Configuration List. See Printing the Network Configuration List in the Network User's Guide.
- If this screen appears click **OK**.



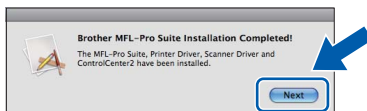
Enter a name for your Macintosh in **Display Name** up to 15 characters long and click **OK**. Go to **f**.



The name you enter will appear on the machine's LCD when you press the **SCAN** key and choose a scan option. (For more information, see Network Scanning in the Software User's Guide.)



When this screen appears, click **Next**.

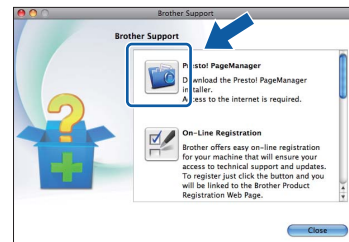


**The installation of MFL-Pro Suite is now complete.**  
Go to step **19**.

## 19 Download and install Presto! PageManager

When Presto! PageManager is installed OCR capability is added to Brother ControlCenter2. You can easily scan, share and organize photos and documents using Presto! PageManager.

- a** On the **Brother Support** screen, click the **Presto! PageManager** icon to go to the Presto! PageManager download site, and follow the on-screen instructions.



## 20 Install MFL-Pro Suite on additional computers (if needed)

If you want to use your machine with multiple computers on the network, install MFL-Pro Suite on each computer. Go to step **18** on page 22. Also see step **16** on page 21 before you install.

### Finish

**The installation is now complete.**

## Note

- If you specify an IP Address for the machine, you must set the Boot Method to Static by using the control panel. For more information, see the Network User's Guide.
- To use Image Capture for scanning on Mac OS X 10.6.x, please install the CUPS Printer Driver, which can be downloaded from the Brother Solutions Center at <http://solutions.brother.com/>.



## For wireless network interface users

### 16 Before you begin

First you must configure the wireless network settings of your machine to communicate with your network access point/router. After the machine is configured to communicate with your access point/router, computers on your network will have access to the machine. To use the machine from these computers, you will need to install the drivers and software. The following steps will guide you through the configuration and installation process.

To achieve optimum results with normal everyday document printing, place the Brother machine as close to the network access point/router as possible with minimal obstructions. Large objects and walls between the two devices as well as interference from other electronic devices can affect the data transfer speed of your documents.

Due to these factors, wireless may not be the best method of connection for all types of documents and applications. If you are printing large files, such as multi-page documents with mixed text and large graphics, you may want to consider choosing wired Ethernet for a faster data transfer or USB for the fastest throughput speed.

Although the Brother MFC-J6910DW can be used in both a wired and wireless network, only one of the connection methods can be used at a time.



#### Note

*If you have previously configured the wireless settings of the machine you must reset the network (LAN) settings before you can configure the wireless settings again.*

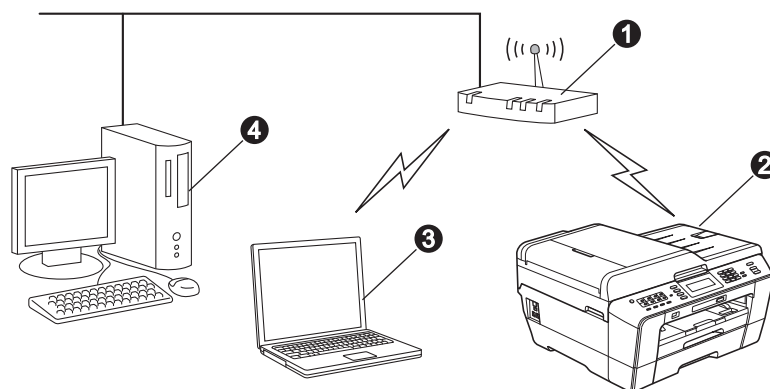
*On your machine, press **MENU**. Press **Network**.*

*Press **▲** or **▼** to display **Network Reset**, and then press **Network Reset**.*

*Press **Yes** to accept. Hold down **Yes** for 2 seconds to confirm.*

The following instructions are for infrastructure mode (connected to a computer through an access point/router).

#### Infrastructure Mode



- ① Access point/router
- ② Wireless Network machine (your machine)
- ③ Wireless capable computer connected to the access point/router
- ④ Wired computer connected to the access point/router

**Please make sure the wireless network settings of the machine match the access point/router.**



#### Note

*To set up your machine in Ad-hoc mode (connected to a wireless capable computer without an access point/router) you can find instructions in the Network User's Guide on the documentation CD-ROM.*

*Also you can download the Network User's Guide by following the instructions below.*

*1 Turn on your computer. Insert the installation CD-ROM into your CD-ROM drive.*

*For Windows®:*

*2 Choose your model and the language. The CD-ROM top menu will appear.*

*3 Click **Documentation**, and follow the on-screen instructions.*

*For Macintosh:*

*2 Double-click **Documentation**, and follow the on-screen instructions.*





## 17

### Confirm your network environment (Infrastructure Mode)

The following instructions will offer two methods for installing your Brother machine in a wireless network environment.

- a** If your wireless access point/router does not support WPS (Wi-Fi Protected Setup) or AOSS™, **write down the wireless network settings** of your wireless access point/router in the area below.

**Please do not contact Brother Customer Service for assistance without the wireless security information. We cannot assist you in locating your network security settings.**

Item	Record the current wireless network settings
SSID (Network Name):	
Network Key	

\* The Network Key may also be described as the Password, Security Key or Encryption Key.

#### Note

**If you do not know this information (SSID and Network Key), you cannot continue the wireless setup.**

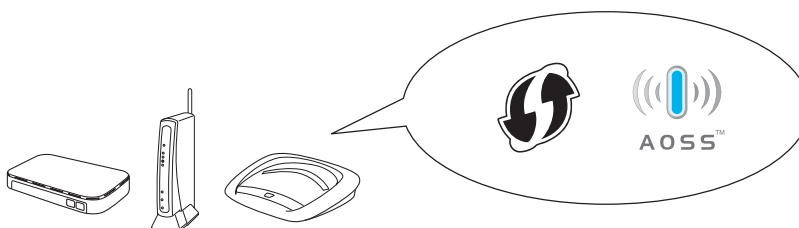
#### **How can I find this information**

- 1) You should see the documentation provided with your wireless access point/router.
- 2) The initial SSID could be the manufacturer's name or the model name.
- 3) If you do not know the security information, please consult the router manufacturer, your system administrator, or internet provider.

**Now go to**

**page 26**

- b** If your wireless access point/router supports automatic wireless (one-push) setup (WPS or AOSS™)



**Now go to**

**page 27**



## 18

### Configure the wireless settings (typical Wireless Setup in infrastructure mode)

- a** On your machine, press **MENU**.  
Press **Network**.  
Press **WLAN**.  
Press **Setup Wizard**.

When **Switch Network interface to wireless?** is displayed, press **Yes** to accept. This will start the wireless setup wizard. To cancel, press **No**.

- b** The machine will search for available SSIDs. It will take several seconds to display a list of available SSIDs.  
If a list of SSIDs is displayed, press **▲** or **▼** to choose the SSID you wrote down in step **17-a** on page 25. Select the SSID you want to connect with.

If the wireless access point/router of the selected SSID supports WPS and the machine asks to use WPS, go to **c**.  
If the machine asks to enter a Network Key, go to **d**.  
Otherwise, go to **e**.



#### Note

- If a list of SSIDs is not displayed, make sure your access point is on. Move your machine closer to the access point and try starting from **a** again.
- If your access point is set to not broadcast the SSID, you will have to manually add the SSID name. For details, see the Network User's Guide.

- c** Press **Yes** to connect your machine using WPS. (If you choose **No** to continue manual setting, go to **d** to enter a Network Key.)  
When the LCD shows **Start WPS**, press the WPS button on your wireless access point/router, and then press **Next** to proceed.  
Go to **e**.

## d

Enter the Network Key you wrote down in step **17-a** on page 25 using the Touchscreen. The letters appear in this order: lower case and then upper case. Press to cycle between letters, numbers and special characters. (The characters available may differ depending on your country.) To move the cursor left or right, press **◀** or **▶**.  
(For more information, see *Entering Text for Wireless Settings* on page 37.)

Press **OK** when you have entered all the characters, then press **Yes** to apply your settings.

## e

Your machine will now try to connect to your wireless network. It may take a few minutes.

## f

A connection result message appears for 60 seconds on the LCD and a wireless LAN report will automatically be printed.  
If the connection failed, check the error code on the printed report and refer to *Troubleshooting* on page 28.



**Wireless setup is now complete. A four level indicator at the right of your machine's LCD will show the wireless signal strength of your access point/router.**

**To install MFL-Pro Suite, continue to step 19.**

**For Windows® Users:**

**Now go to**

**Page 30**

**For Macintosh Users:**

**Now go to**

**Page 34**



## 18

### Configure the wireless settings using the automatic wireless (one-push) method

- a** Confirm your wireless access point/router has the WPS (Wi-Fi Protected Setup) or AOSS™ symbol as shown below.



- b** Place the Brother machine within range of your WPS or AOSS™ access point/router. The range may differ depending on your environment. Refer to the instructions provided with your access point/router.

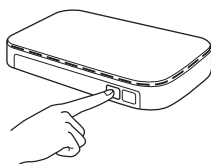
- c** On your machine, press **MENU**.  
Press **Network**.  
Press **WLAN**.  
Press **WPS/AOSS**.

When **Switch Network interface to wireless?** is displayed, press **Yes** to accept. This will start the wireless setup wizard. To cancel, press **No**.

#### Note

*If your wireless access point/router supports WPS (PIN Method) and you want to configure your machine using the PIN (Personal Identification Number) Method, see Using the PIN Method of Wi-Fi Protected Setup in the Network User's Guide.*

- d** When the LCD shows **Start WPS** or **AOSS**, press the WPS or AOSS™ button on your wireless access point/router. See the user's guide for your wireless access point/router for instructions.



Then press **OK** and your machine will now automatically detect which mode (WPS or AOSS™) your wireless access point/router uses and try to connect to your wireless network.

- e** A connection result message appears for 60 seconds on the LCD and a wireless LAN report will automatically be printed. If the connection failed, check the error code on the printed report and refer to *Troubleshooting* on page 28.



**Wireless setup is now complete. A four level indicator at the right of your machine's LCD will show the wireless signal strength of your access point/router.**

**To install MFL-Pro Suite, continue to step 19.**

**For Windows® Users:**

**Now go to**

**Page 30**

**For Macintosh Users:**

**Now go to**

**Page 34**



## Troubleshooting

Please do not contact Brother Customer Service for assistance without the wireless security information. We cannot assist you in locating your network security settings.

### How can I find the wireless security information (SSID and Network Key)

- 1) You should see the documentation provided with your wireless access point/router.
- 2) The initial SSID could be the manufacturer's name or the model name.
- 3) If you do not know the security information, please consult the router manufacturer, your system administrator, or internet provider.

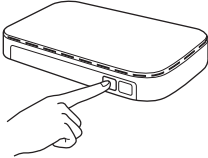
\* The Network Key may also be described as the Password, Security Key or Encryption Key.

### Wireless LAN report

If the wireless LAN report that printed shows that the connection failed, check the error code on the printed report and refer to the following instructions.

Error code	Recommended Solutions
TS-01	<p>The wireless setting is not activated, turn the wireless setting to ON.</p> <ul style="list-style-type: none"><li>- If a LAN cable is connected to your machine, disconnect it and turn the wireless setting of your machine to ON.</li></ul> <p>On your machine, press <b>MENU</b>. Press <b>Network</b>. Press <b>▲</b> or <b>▼</b> to display <b>Network I/F</b>. Press <b>Network I/F</b>. Press <b>WLAN</b>. Press <b>Stop/Exit</b>.</p>
TS-02	<p>The wireless access point/router cannot be detected.</p> <p>1. Check the following 4 points.</p> <ul style="list-style-type: none"><li>- Make sure that the wireless access point/router is powered on.</li><li>- Move your machine to an obstruction-free area, or closer to the wireless access point/router.</li><li>- Temporarily place your machine within about one metre from the wireless access point when you are configuring the wireless settings.</li><li>- If your wireless access point/router is using MAC address filtering, confirm the MAC address of the Brother machine is allowed in the filter.</li></ul> <p>2. If you manually entered the SSID and security information (SSID/authentication method/encryption method/Network Key), the information may be incorrect. Reconfirm the SSID and security information and re-enter the correct information as necessary.</p> <p>See <i>How can I find the wireless security information (SSID and Network Key)</i> on page 28 to confirm.</p>



TS-04	<p>The Authentication/Encryption methods used by the selected wireless access point/router are not supported by your machine.</p> <p>For infrastructure mode, change the authentication and encryption methods of the wireless access point/router. Your machine supports the following authentication methods:</p> <table border="1" data-bbox="331 394 1093 658"><thead><tr><th>authentication method</th><th>encryption method</th></tr></thead><tbody><tr><td rowspan="2">WPA-Personal</td><td>TKIP</td></tr><tr><td>AES</td></tr><tr><td>WPA2-Personal</td><td>AES</td></tr><tr><td rowspan="2">Open</td><td>WEP</td></tr><tr><td>None (without encryption)</td></tr><tr><td>Shared key</td><td>WEP</td></tr></tbody></table> <p>If your problem is not solved, the SSID or network settings you entered may be incorrect. Reconfirm the wireless network settings.</p> <p>See <i>How can I find the wireless security information (SSID and Network Key)</i> on page 28 to confirm.</p> <p>For ad-hoc mode, change the authentication and encryption methods of your computer for the wireless setting. Your machine supports Open authentication method only, with optional WEP encryption.</p>	authentication method	encryption method	WPA-Personal	TKIP	AES	WPA2-Personal	AES	Open	WEP	None (without encryption)	Shared key	WEP
authentication method	encryption method												
WPA-Personal	TKIP												
	AES												
WPA2-Personal	AES												
Open	WEP												
	None (without encryption)												
Shared key	WEP												
TS-05	<p>The security information (SSID/Network Key) is incorrect. Reconfirm the SSID and security information (Network Key). If your router uses WEP encryption, enter the key used as the first WEP key. Your Brother machine supports the use of the first WEP key only.</p> <p>See <i>How can I find the wireless security information (SSID and Network Key)</i> on page 28 to confirm.</p>												
TS-06	<p>The wireless security information (Authentication method/Encryption method/Network Key) is incorrect. Reconfirm the wireless security information (Authentication method/Encryption method/Network Key) in the table of TS-04. If your router uses WEP encryption, enter the key used as the first WEP key. Your Brother machine supports the use of the first WEP key only.</p> <p>See <i>How can I find the wireless security information (SSID and Network Key)</i> on page 28 to confirm.</p>												
TS-07	<p>The machine cannot detect a wireless access point/router that has WPS or AOSS™ enabled.</p> <p>If you would like to configure your wireless settings using WPS or AOSS™, you must operate both your machine and the wireless access point/router. Confirm your wireless access point/router supports WPS or AOSS™ and try starting again.</p> <p>If you do not know how to operate your wireless access point/router using WPS or AOSS™ see the documentation provided with your wireless access point/router, ask the manufacturer of your wireless access point/router or ask your network administrator.</p> 												
TS-08	<p>Two or more wireless access points that have WPS or AOSS™ enabled are detected.</p> <ul style="list-style-type: none"><li>- Confirm that only one wireless access point/router within range has the WPS or AOSS™ method active and try again.</li><li>- Try starting again after a few minutes in order to avoid interference from other access points.</li></ul>												



## Install the drivers & software

(Windows® 2000 Professional/XP Home/XP Professional/Windows Vista®/Windows® 7)

### 19

## Before you install

Make sure that your computer is ON and you are logged on with Administrator rights.

### ! IMPORTANT

If there are any programs running, close them.

### Note

- For the latest drivers and information, visit <http://solutions.brother.com/>.
- The screens may differ depending on your operating system.
- The installation CD-ROM includes ScanSoft™ PaperPort™ 12SE. This software supports Windows® XP Home (SP3 or greater), XP Professional x32 Edition (SP3 or greater), XP Professional x64 Edition (SP2 or greater), Windows Vista® (SP2 or greater) and Windows® 7. Update to the latest Windows® Service Pack before installing MFL-Pro Suite. For Windows® 2000 (SP4 or greater), when the ScanSoft™ PaperPort™ 11SE download screen appears during the installation of MFL-Pro Suite, follow the on-screen instructions.

### 20

## Install MFL-Pro Suite

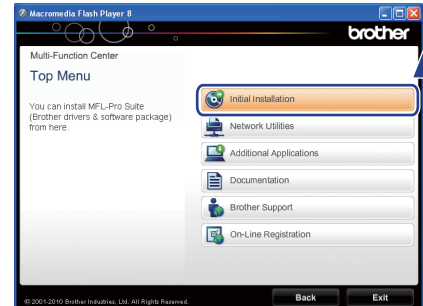
- a** Put the supplied installation CD-ROM into your CD-ROM drive. If the model name screen appears, choose your machine. If the language screen appears, choose your language.

### Note

If the Brother screen does not appear automatically, go to **My Computer (Computer)**, double-click the CD-ROM icon, and then double-click **start.exe**.

### b

The CD-ROM Top menu will appear. Click **Initial Installation**.



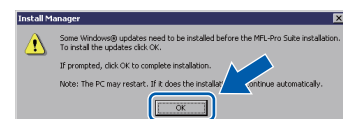
### c

Click **Install MFL-Pro Suite** and click **Yes** if you accept the license agreements. Follow the on-screen instructions.



### Note

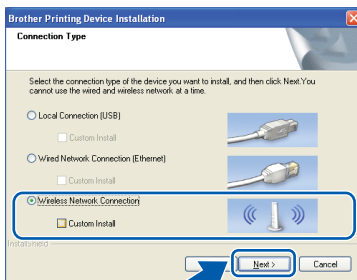
- If this screen appears, click **OK** and restart your computer.



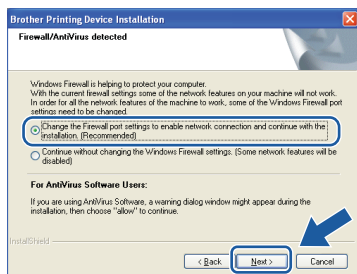
- If the installation does not continue automatically, open the top menu again by ejecting and then reinserting the CD-ROM or double-click the **start.exe** program from the root folder, and continue from **b** to install MFL-Pro Suite.
- For Windows Vista® and Windows® 7, when the **User Account Control** screen appears, click **Allow** or **Yes**.



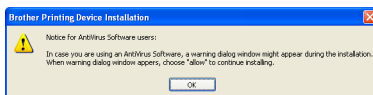
- d** Choose **Wireless Network Connection**, and then click **Next**.



- e** When this screen appears, choose **Change the Firewall port settings to enable network connection and continue with the installation. (Recommended)** and click **Next**. (Not for Windows® 2000)



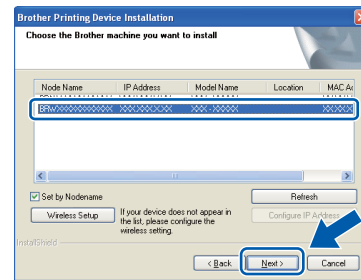
If you are using a firewall other than Windows® Firewall or Windows® Firewall is off, this screen may appear.



See the instructions provided with your firewall software for information on how to add the following network ports.

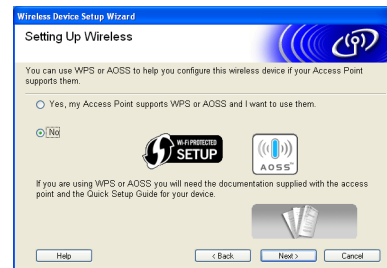
- For network scanning, add UDP port 54925.
- For network PC-Fax receiving, add UDP port 54926.
- If you still have trouble with your network connection, add UDP port 137.

- f** Choose your machine from the list, and then click **Next**.



## Note

- If your wireless settings fail, the **Wireless Device Setup Wizard** will appear during the installation of MFL-Pro Suite. Confirm your settings by following the on-screen instructions. If you encounter this failure, go to step **17-a** on page 25 and setup the wireless connection again.



- If you are using WEP and the LCD displayed *Connected* but your machine is not found, make sure you entered the WEP key correctly. The WEP key is case sensitive.





- g** The installation of the Brother drivers will automatically start. The installation screens appear one after another.

## ! IMPORTANT

**DO NOT** cancel any of the screens during the installation. It may take a few seconds for all screens to appear.

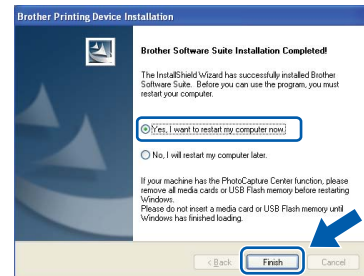
## Note

For Windows Vista® and Windows® 7, when the **Windows Security** screen appears, click the check box and click **Install** to complete the installation correctly.

- h** When the **User's Guides** screen is displayed, click **View Manuals on the Web** if you want to download the manuals and follow the on-screen instructions. You can also view the manuals on the documentation CD-ROM.
- i** When the **On-Line Registration** screen is displayed, make your selection and follow the on-screen instructions.
- j** If you do not want to set your machine as the Default printer, uncheck **Set as Default Printer**.

## 21 Finish and restart

- a** Click **Finish** to restart your computer. After restarting the computer, you must be logged on with Administrator rights.



## Note

- If an error message appears during the software installation, run the **Installation Diagnostics** located in **Start/All Programs/Brother/MFC-JXXX** (where MFC-JXXX is your model name).
- Depending on your security settings, a Windows Security or antivirus software window may appear when using the machine or its software. Please allow or permit the window to continue.

- b** In the **Check for Firmware Updates** screen, choose the firmware update setting you want and click **OK**.

## Note

Internet access is required for the firmware update.





## 22 Install MFL-Pro Suite on additional computers (if needed)

If you want to use your machine with multiple computers on the network, install MFL-Pro Suite on each computer. Go to step **19** on page 30.

### Note

#### **Network license (Windows®)**

*This product includes a PC license for up to 2 Users. This license supports the installation of the MFL-Pro Suite including ScanSoft™ PaperPort™ 12SE or ScanSoft™ PaperPort™ 11SE on up to 2 PCs on the network. If you want to use more than 2 PCs with ScanSoft™ PaperPort™ 12SE or ScanSoft™ PaperPort™ 11SE installed, please purchase the Brother NL-5 pack which is a multiple PC license agreement pack for up to 5 additional users. To purchase the NL-5 pack, contact your authorized Brother dealer or contact Brother customer service.*

## Finish

The installation is now complete.

### Now go to

Proceed to Install Optional Applications on page 36.

### Note

- If you specify an IP Address for the machine, you must set the Boot Method to Static by using the control panel. For more information, see the Network User's Guide.
- **XML Paper Specification Printer Driver**  
The XML Paper Specification Printer Driver is the most suitable driver for Windows Vista® and Windows® 7 when printing from applications that use the XML Paper Specification documents. Please download the latest driver by accessing the Brother Solutions Center at <http://solutions.brother.com/>.



## Install the drivers & software (Mac OS X 10.4.11, 10.5.x, 10.6.x)

### 19

### Before you install

Make sure your machine is connected to the power and your Macintosh is ON. You must be logged on with Administrator rights.

#### Note

- For the latest drivers and information on the Mac OS X you are using, visit <http://solutions.brother.com/>.
- For Mac OS X 10.4.0 to 10.4.10 users, upgrade to Mac OS X 10.4.11 - 10.6.x.

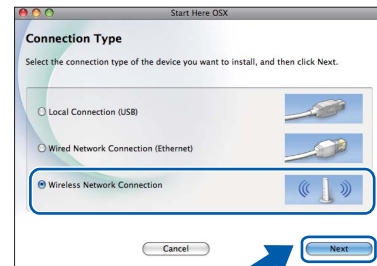
### 20

### Install MFL-Pro Suite

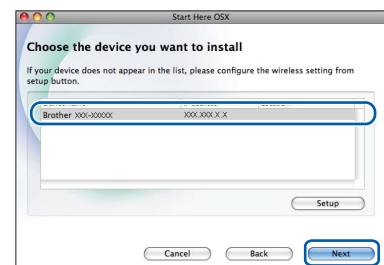
- Put the supplied installation CD-ROM into your CD-ROM drive.
- Double-click the **Start Here OSX** icon to install.



- Choose **Wireless Network Connection**, and then click **Next**.



- The Brother software will search for the Brother device in your wireless network. If the machine is configured for your network, choose the device you want to install, and then click **Next**.



#### Note

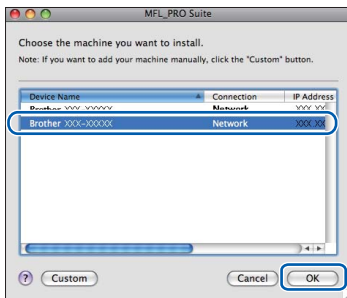
If your wireless settings fail, the **Wireless Device Setup Wizard** will appear during the installation of MFL-Pro Suite. Confirm your settings by following the on-screen instructions. If you encounter this failure, go to step **17-a** on page 25 and setup the wireless connection again.





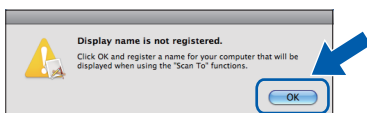
- e** Please wait for the software to install, it will take about 30 seconds. After the installation, this window will appear.

Choose your machine from the list, and then click **OK**.

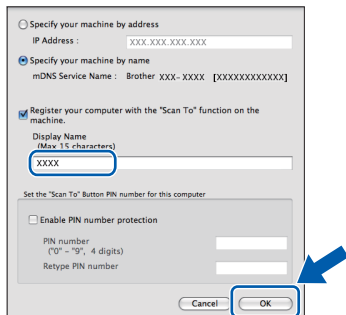


### Note

- You can find your machine's MAC Address (Ethernet Address) and IP Address by printing out the Network Configuration List. See Printing the Network Configuration List in the Network User's Guide.
- If this screen appears click **OK**.

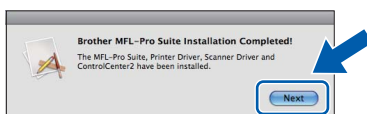


Enter a name for your Macintosh in **Display Name** up to 15 characters long and click **OK**. Go to **f**.



The name you enter will appear on the machine's LCD when you press the **SCAN** key and choose a scan option. (For more information, see Network Scanning in the Software User's Guide.)

- f** When this screen appears, click **Next**.

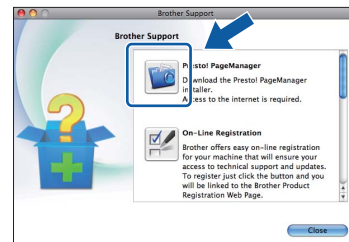


The installation of MFL-Pro Suite is now complete.  
Go to step **21**.

## 21 Download and install Presto! PageManager

When Presto! PageManager is installed OCR capability is added to Brother ControlCenter2. You can easily scan, share and organize photos and documents using Presto! PageManager.

- a** On the **Brother Support** screen, click the **Presto! PageManager** icon to go to the Presto! PageManager download site, and follow the on-screen instructions.



## 22 Install MFL-Pro Suite on additional computers (if needed)

If you want to use your machine with multiple computers on the network, install MFL-Pro Suite on each computer. Go to step **19** on page 34.

# Finish

The installation is now complete.

### Note

- If you specify an IP Address for the machine, you must set the Boot Method to Static by using the control panel. For more information, see the Network User's Guide.
- To use Image Capture for scanning on Mac OS X 10.6.x, please install the CUPS Printer Driver, which can be downloaded from the Brother Solutions Center at <http://solutions.brother.com/>.

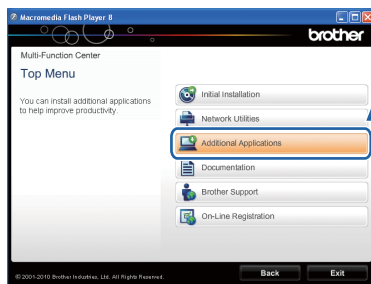
## 1 Install FaceFilter Studio/BookScan & Whiteboard Suite supported by Reallusion, Inc

**FaceFilter Studio** is an easy-to-use borderless photo printing application. FaceFilter Studio also lets you edit your photo data and add photo effects such as red eye reduction or skin tone enhancement. The **BookScan Enhancer** software can correct your scanned book images automatically. The **Whiteboard Enhancer** software cleans up and enhances text and images from photos taken of your whiteboard.

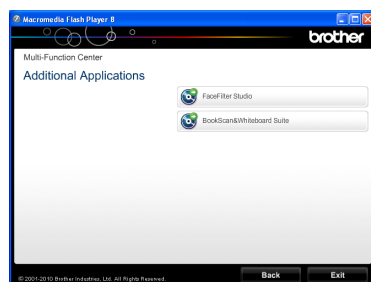
### Note

- The machine must be ON and connected to the computer.
- The computer must be connected to the Internet.
- Make sure you are logged on with Administrator rights.
- This application is not available for Windows Server® 2003/2008 series.

- Open the top menu again by ejecting and then reinserting the installation CD-ROM or by double-clicking the **start.exe** program from the root folder.
- The CD-ROM Top Menu will appear. Choose your language and then click **Additional Applications**.



- Click the button for the application you want to install.



- Go back to the **Additional Applications** screen to install more applications.

## 2 Install FaceFilter Studio Help

To get instructions on how to use FaceFilter Studio, download and install FaceFilter Studio Help.

- To run FaceFilter Studio, go to **Start/All Programs/Reallusion/FaceFilter Studio** on your computer.
- Click the **?** button on the upper right corner of the screen.
- Click **Check for updates** to go to the Reallusion update web page.



- Click the **Download** button and choose a folder to save the file in.
- Close FaceFilter Studio before you start the installer for FaceFilter Studio Help. Double-click the downloaded file from the folder you specified and follow the on-screen instructions for installation.

### Note

To view the complete FaceFilter Studio Help, choose **Start/All Programs/Reallusion/FaceFilter Studio/FaceFilter Studio Help** on your computer.

## Restore the network settings to factory default

To restore all network settings of the internal Print/Scan server to factory default, please follow the steps below.

- a** Make sure the machine is not operating, then disconnect all the cables from the machine (except the power cord).
- b** Press **MENU**.
- c** Press **Network**.
- d** Press **▲** or **▼** to display **Network Reset** and press **Network Reset**.
- e** Press **Yes**.
- f** Hold down **Yes** for 2 seconds to confirm.
- g** The machine will restart, re-connect cables once this is complete.

## Entering Text for Wireless Settings

Up to four letters are assigned to each letter button on the Touchscreen. By pressing the proper button repeatedly, you can access the character you want.

Press **A 1 @** to cycle between letters, numbers and special characters. (The characters available may differ depending on your country.)



### Inserting spaces

To enter a space, press **A 1 @** then press the space button **^ \_** or **\_**.

### Making corrections

If you entered a character incorrectly and want to change it, press **◀** or **▶** to move the cursor to the incorrect character, press **<X>**. Re-enter the correct character. You can also back up and insert a character.




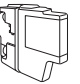
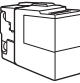
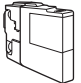


### Repeating characters

If you need to enter a character that is on the same button as the character before, press **▶** to move the cursor to the right before you press the button again.

## Replacement consumables

When the time comes to replace ink cartridges, an error message will be indicated on the LCD. For more information about the ink cartridges for your machine, visit <http://www.brother.com/original/> or contact your local Brother re-seller.

### Ink cartridge

Black	Yellow	Cyan	Magenta
LC1240BK (High Yield)	LC1240Y (High Yield)	LC1240C (High Yield)	LC1240M (High Yield)
			
LC1280XLBK (Super High Yield)	LC1280XLY (Super High Yield)	LC1280XLC (Super High Yield)	LC1280XLM (Super High Yield)
			

#### What is Innobella™?

Innobella™ is a range of genuine consumables offered by Brother.

The name “Innobella™” derives from the words “Innovation” and “Bella” (meaning “Beautiful” in Italian) and is a representation of the “innovative” technology providing you with “beautiful” and “long lasting” print results.



#### Trademarks

The Brother logo is a registered trademark of Brother Industries, Ltd.

Brother is a registered trademark of Brother Industries, Ltd.

Windows Vista is either a registered trademark or trademark of Microsoft Corporation in the United States and/or other countries.

Microsoft, Windows, Windows Server and Internet Explorer are registered trademarks of Microsoft Corporation in the United States and/or other countries.

Apple, Macintosh and Mac OS are trademarks of Apple Inc., registered in the United States and other countries.

Nuance, the Nuance logo, PaperPort and ScanSoft are trademarks or registered trademarks of Nuance Communications, Inc. or its affiliates in the United States and/or other countries.

FaceFilter Studio is a trademark of Reallusion, Inc.

AOSS is a trademark of Buffalo Inc.

WPA, WPA2, Wi-Fi Protected Access and Wi-Fi Protected Setup are either trademarks or registered trademarks of Wi-Fi Alliance in the United States and/or other countries.

Each company whose software title is mentioned in this manual has a Software License Agreement specific to its proprietary programs.

**Any trade names and product names of companies appearing on Brother products, related documents and any other materials are all trademarks or registered trademarks of those respective companies.**

#### Compilation and Publication

Under the supervision of Brother Industries, Ltd., this manual has been compiled and published, covering the latest product descriptions and specifications.

The contents of this manual and the specifications of this product are subject to change without notice.

Brother reserves the right to make changes without notice in the specifications and materials contained herein and shall not be responsible for any damages (including consequential) caused by reliance on the materials presented, including but not limited to typographical and other errors relating to the publication.

#### Copyright and License

©2010 Brother Industries, Ltd. All rights reserved.

This product includes software developed by the following vendors:

©1983-1998 PACIFIC SOFTWARES, INC.

©2008 Devicescape Software, Inc.

This product includes the “KASAGO TCP/IP” software developed by ZUKEN ELMIC, Inc.



**BROTHER  
CREATIVECENTER**

Get inspired. Double-click the Brother CreativeCenter icon on your desktop to access a FREE web site with many ideas and resources for personal and professional use.



<http://www.brother.com/creativecenter/>