



Please read the Product Safety Guide first before you set up your machine. Then, please read this Quick Setup Guide for the correct setup and installation.


 WARNING	<u>WARNING</u> indicates a potentially hazardous situation which, if not avoided, could result in death or serious injuries.
 CAUTION	<u>CAUTION</u> indicates a potentially hazardous situation which, if not avoided, may result in minor or moderate injuries.

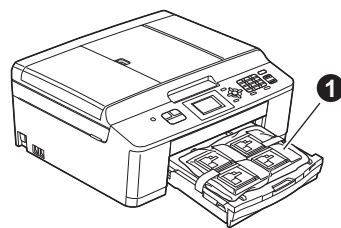
1

Unpack the machine

WARNING

Plastic bags are used in the packing of your machine. Plastic bags are not toys. To avoid the danger of suffocation, keep these bags away from babies and children and dispose of them correctly.

- a** Remove the protective tape and film covering the machine, and also from the LCD.
- b** Remove the plastic bag  containing the ink cartridges from on top of the paper tray.

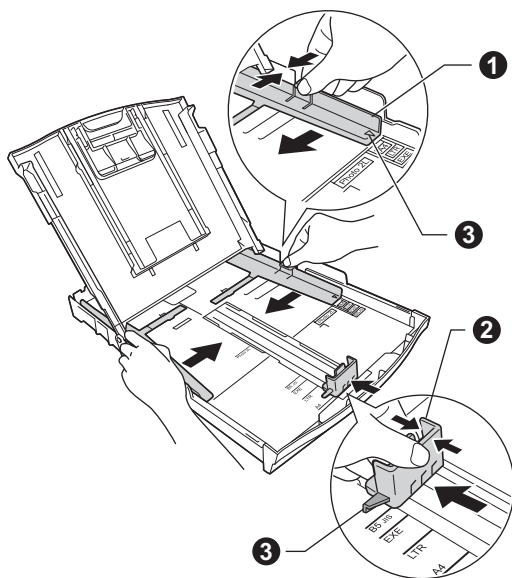


2

Load plain A4 paper

- a** Pull the paper tray completely out of the machine.
- b** Open the output paper tray cover.
- c** With both hands, gently press and slide the paper side guides **1** and then the paper length guide **2** to fit the paper size.

Make sure that the triangular marks **3** on the paper side guides **1** and paper length guide **2** line up with the mark for the paper size you are using.



- d** Fan the stack of paper well to avoid paper jams and misfeeds.



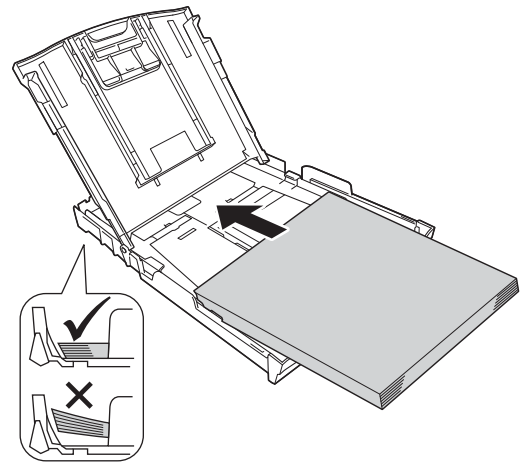
Note

Always make sure that the paper is not curled or wrinkled.

- e** Check that the paper is flat in the tray.

! IMPORTANT

Be careful that you do not push the paper in too far; it may lift at the back of the tray and cause paper feed problems.



- f** Gently adjust the paper side guides to the paper with both hands.
- g** Close the output paper tray cover.
- h** *Slowly* push the paper tray completely into the machine.
- i** While holding the paper tray in place, pull out the paper support until it clicks, and then unfold the paper support flap.

3

Connect the power cord and telephone line

⚠ WARNING

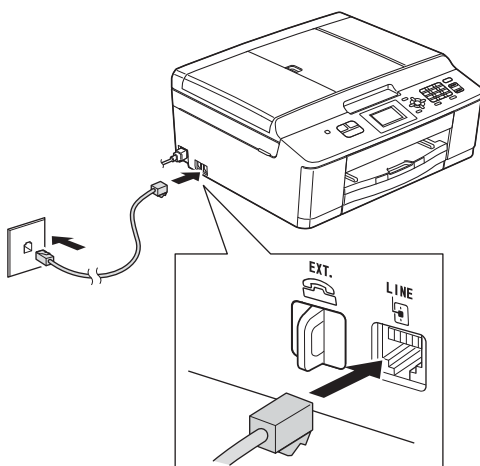
- The machine must be fitted with an earthed plug.
- Since the machine is grounded through the power outlet, you can protect yourself from potentially hazardous electrical conditions on the telephone network by keeping the power cord connected to your machine when you connect it to a telephone line. Similarly, you can protect yourself when you want to move your machine by disconnecting the telephone line first and then the power cord.

⚠ IMPORTANT

DO NOT connect the USB cable yet (if you are using a USB cable).

a Connect the power cord.

b



⚠ IMPORTANT

The telephone line cord **MUST** be connected to the socket on the machine marked **LINE**.

4

Install the ink cartridges

⚠ CAUTION

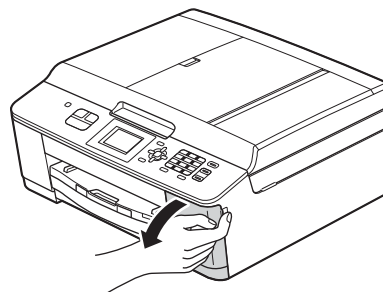
If ink gets in your eyes, wash it out with water at once and call a doctor if you are concerned.

📝 Note

Make sure you install the Introductory ink cartridges included with your machine first.

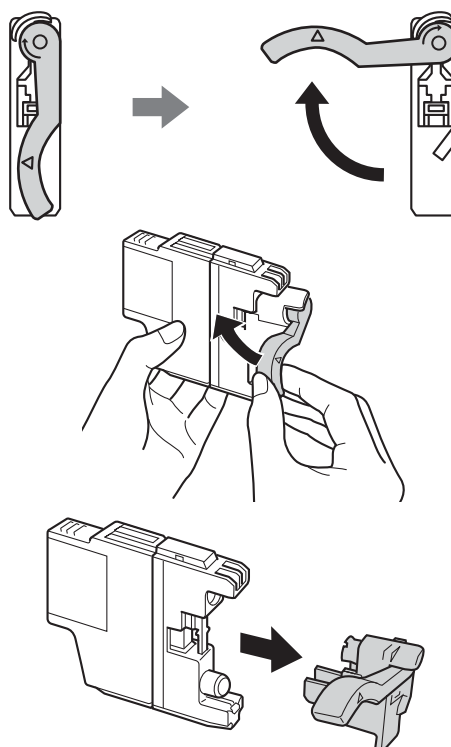
a Make sure that the power is turned on.

b Open the ink cartridge cover.



c Remove the orange protective part.

d Unpack the ink cartridge.



⚠ IMPORTANT

DO NOT shake the ink cartridges. If ink stains your skin or clothing, wash with soap or detergent at once.

- e** Take care to match the colour of the lever with the cartridge colour.
Install each ink cartridge in the direction of the arrow on the label.
- f** Gently push the back of the ink cartridge marked "PUSH" until it clicks. After all the ink cartridges are installed close the ink cartridge cover.

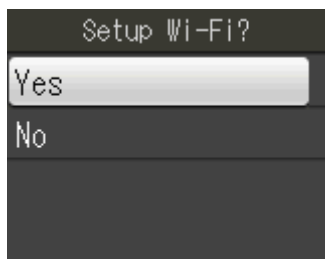
5 Check the print quality

- a** When the preparation process has finished, the LCD shows `Set Paper` and `Press Start`. Press **Colour Start**.
- b** Check the quality of the four colour blocks on the sheet. (black/yellow/cyan/magenta)
- c** If all lines are clear and visible, press **1** (`Yes`) to finish the quality check and go to step **6**.
If you can see missing short lines, press **2** (`No`) and follow the steps on the LCD.

6 Wireless setup (if needed)

For wireless setup using a Macintosh computer or mobile device, go to **a**.
For Windows users (all connections) and Macintosh USB connections, go to **b**.

- a** If you are using a Macintosh computer or a mobile device on a wireless network, press **OK**.



Press **▲** or **▼** to choose `Yes`.
Press **OK**.
Then go to step **15** on page 12 to continue the wireless setup.
After finishing the wireless setup you will need to return to step **7** to finish the machine setup.

Note

You can choose `No` to configure the wireless settings later.

- b** If you are using a Windows® computer or want to connect your Macintosh using USB, press **OK**.



Press **▲** or **▼** to choose `No`.
Press **OK**.
Then go to step **7**.
The wireless setup for Windows® users will be covered in later steps.

7 Choose your language

- a** Press **Menu**.
- b** Press **▲** or **▼** to choose `Initial Setup`. Press **OK**.
- c** Press **▲** or **▼** to choose `Local Language`. Press **OK**.
- d** Press **▲** or **▼** to choose your language. Press **OK**.
- e** Press **Stop/Exit**.

8

Choose a Receive Mode

There are four possible receive modes: Fax Only, Fax/Tel, Manual and External TAD.

Do you want to use the telephone features of your machine (if available) or an external telephone or external telephone answering device connected on the same line as the machine?

Yes

Are you using the voice message function of an external telephone answering device?

No

Do you want the machine to answer fax and telephone calls automatically?

Yes

No

Yes

No

Fax Only

Your machine automatically answers every call as a fax.

Fax/Tel

Your machine controls the line and automatically answers every call. If the call is not a fax, the telephone will ring for you to pick up the call.

Manual

You control the telephone line and must answer every call yourself.

External TAD

Your external telephone answering device (TAD) automatically answers every call. Voice messages are stored on the external TAD. Fax messages are printed.

- a** Press **Menu**.
- b** Press **▲** or **▼** to choose **Initial Setup**. Press **OK**.
- c** Press **▲** or **▼** to choose **Receive Mode**. Press **OK**.
- d** Press **▲** or **▼** to choose **Fax Only**, **Fax/Tel**, **External TAD** or **Manual**. Press **OK**.
- e** Press **Stop/Exit**.

9

Set the date and time

- a** Press **Menu**.
- b** Press **▲** or **▼** to choose **Initial Setup**. Press **OK**.
- c** Press **▲** or **▼** to choose **Date&Time**. Press **OK**.
- d** Enter the last two digits of the year on the dial pad, and then press **OK**.
- e** Repeat for month/day/time in 24-hour format.
- f** Press **Stop/Exit**.

10

Enter personal information (Station ID)

You should store your name and fax number to be printed on all fax pages that you send.

- a** Press **Menu**.
- b** Press **▲** or **▼** to choose **Initial Setup**. Press **OK**.
- c** Press **▲** or **▼** to choose **Station ID**. Press **OK**.
- d** Enter your fax number (up to 20 digits) on the dial pad, and then press **OK**. To enter a "+" for international codes, press *.
- e** Enter your name (up to 20 characters) using the dial pad, and then press **OK**.
- f** Press **Stop/Exit**.



Note

If you make a mistake and want to start again, press **Stop/Exit** and go back to **a**.

11 Set Tone or Pulse dialling mode

- a** Press **Menu**.
- b** Press **▲** or **▼** to choose **Initial Setup**. Press **OK**.
- c** Press **▲** or **▼** to choose **Tone/Pulse**. Press **OK**.
- d** Press **▲** or **▼** to choose **Pulse (or Tone)**. Press **OK**.
- e** Press **Stop/Exit**.

12 Set the telephone line type

- a** Press **Menu**.
- b** Press **▲** or **▼** to choose **Initial Setup**. Press **OK**.
- c** Press **▲** or **▼** to choose **Phone Line Set**. Press **OK**.
- d** Press **▲** or **▼** to choose **Normal, PBX or ISDN**. Press **OK**.
- e** Press **Stop/Exit**.

13 Set the telephone line compatibility (VoIP)

If you are connecting the machine to a VoIP service (over the Internet) you need to change the compatibility setting.



Note

If you are using an analogue telephone line you can skip this step.

- a** Press **Menu**.
- b** Press **▲** or **▼** to choose **Initial Setup**. Press **OK**.
- c** Press **▲** or **▼** to choose **Compatibility**. Press **OK**.
- d** Press **▲** or **▼** key to choose **Basic (for VoIP)**. Press **OK**.
- e** Press **Stop/Exit**.

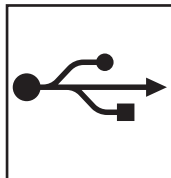
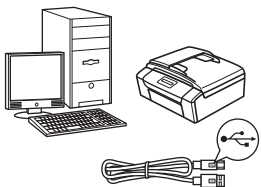
14

Choose your connection type

These installation instructions are for Windows® XP/XP Professional x64 Edition, Windows Vista®, Windows® 7, and Mac OS X (versions 10.4.11, 10.5.x and 10.6.x).

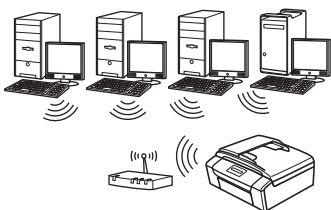
Note

- For Windows Server® 2003/2008/2008 R2, the drivers can be found from your model's download page at <http://solutions.brother.com/>.
- If your computer does not have a CD-ROM drive you can download the latest drivers, manuals and utilities for your model from the Brother Solutions Center at <http://solutions.brother.com/>. Some software applications included on the CD-ROM may not be available as a download.



For USB interface cable

Windows®, go to page 8
Macintosh, go to page 10



For Wireless Network

Windows® and Macintosh,
go to page 12



For USB interface users

(Windows® XP Home/XP Professional/Windows Vista®/Windows® 7)

15

Before you install

Make sure that your computer is ON and you are logged on with Administrator rights.

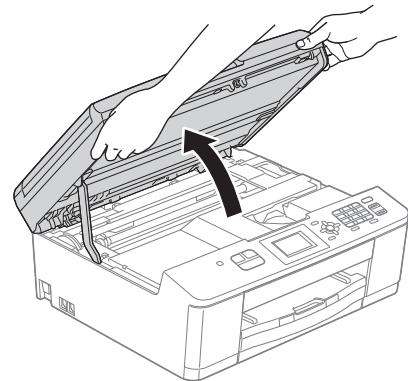
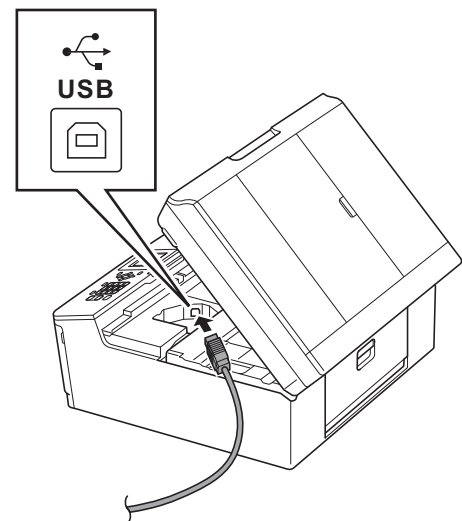
16

Install MFL-Pro Suite

- a** Put the supplied installer CD-ROM into your CD-ROM drive. Follow the on-screen instructions.
- b** The CD-ROM Top Menu will appear. Click **Install MFL-Pro Suite** and click **Yes** if you accept the license agreements. Follow the on-screen instructions.
- c** Choose **Local Connection (USB)**, and then click **Next**. The installation continues.
- d** When this screen appears, go to the next step.

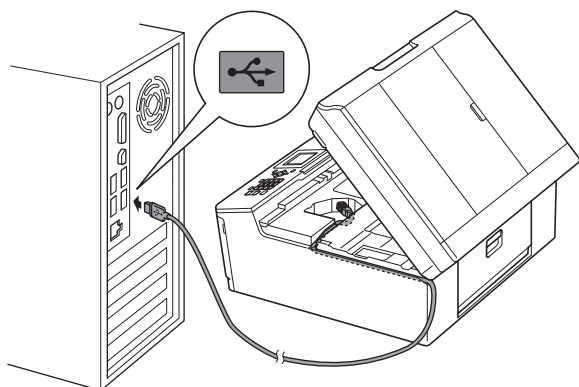
**17**

Connect the USB cable

a**b**

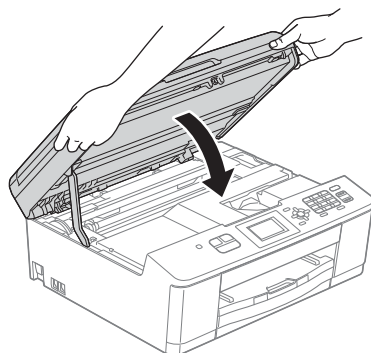


c

**! IMPORTANT**

Make sure that the cable does not restrict the cover from closing, or an error may occur.

d



- e** The installation will continue automatically. The installation screens appear one after another.
- f** When the **On-Line Registration** screen is displayed, make your selection and follow the on-screen instructions.
- g** If you do not want to set your machine as the Default printer, uncheck **Set as Default Printer** and then click **Next**.

18**Finish and restart**

- a** Click **Finish** to restart your computer. After restarting the computer, you must be logged on with Administrator rights.
- b** The following screens will appear.
- When the **Check for Firmware Updates** screen appears, choose the firmware update setting you want and click **OK**.
 - When the **Brother Product Research & Support Program** starts up, follow the on-screen instructions.

**Note**

Internet access is required for the firmware update and the **Brother Product Research & Support Program**.

Finish

The installation is now complete.

Now go to

Proceed to Install Optional Applications on page 19.

**Note****XML Paper Specification Printer Driver**

The XML Paper Specification Printer Driver is the most suitable driver for Windows Vista® and Windows® 7 when printing from applications that use the XML Paper Specification documents. Please download the latest driver by accessing the Brother Solutions Center at <http://solutions.brother.com/>.



For USB interface users (Mac OS X 10.4.11, 10.5.x, 10.6.x)

15

Before you install

Make sure your machine is connected to the power and your Macintosh is ON. You must be logged on with Administrator rights.

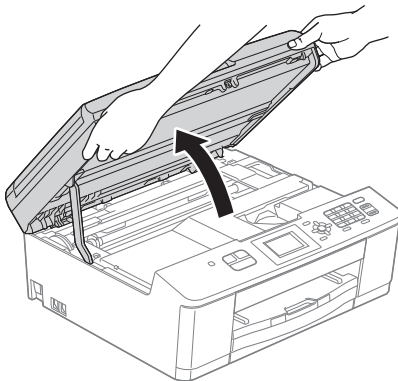
16

Connect the USB cable

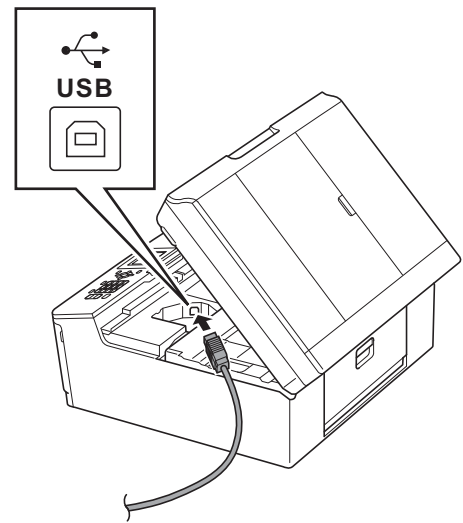
! IMPORTANT

- **DO NOT** connect the machine to a USB port on a keyboard or a non-powered USB hub.
- Connect the machine directly to your Macintosh.

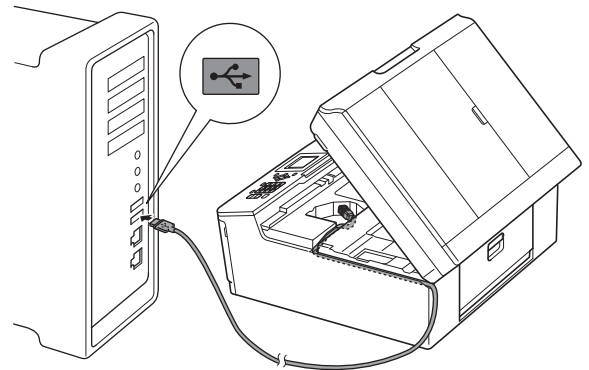
a



b



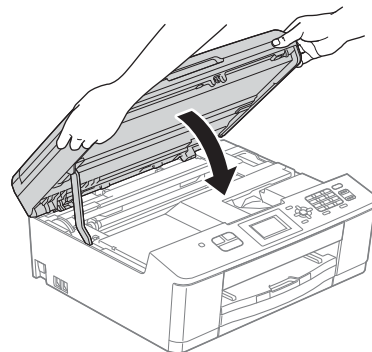
c



! IMPORTANT

Make sure that the cable does not restrict the cover from closing, or an error may occur.

d

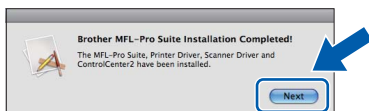




17

Install MFL-Pro Suite

- a** Put the supplied installer CD-ROM into your CD-ROM drive.
- b** Double-click the **Start Here OSX** icon to install.
- c** Choose **Local Connection (USB)**, and then click **Next**. Follow the on-screen instructions.
- d** Please wait for the software to install. After the installation, the Brother software will search for the Brother device. This will take a few moments to complete.
- e** Choose the machine from the list, and then click **OK**.
- f** When this screen appears, click **Next**.



Finish

The installation is now complete.



For wireless network interface users

15

Before you begin

Note

If you have previously configured the wireless settings of the machine you must reset the network (LAN) settings before you can configure the wireless settings again.

*On your machine, press **Menu**. Press **▲** or **▼** to choose *Network* and press **OK**.*

*Press **▲** or **▼** to choose *Network Reset*, and then press **OK**.*

*Press **1** twice for *Yes* to accept the change.*

Note

To set up your machine in Ad-hoc mode (connected to a wireless capable computer without an access point/router) you can find instructions in the Network User's Guide on the CD-ROM.

You can view the Network User's Guide by following the instructions below.

1 Turn on your computer. Insert the CD-ROM into your CD-ROM drive.

For Windows®:

2 Choose your model and the language. The CD-ROM top menu will appear.

*3 Click **Documentation**, and then click **PDF documents**. The top page will appear.*

4 Click Network User's Guide.

For Macintosh:

*2 Double-click **Documentation**, and then double-click your language folder.*

*3 Double-click **top.pdf**, and then click Network User's Guide.*

16

Choose your wireless setup method

The following instructions will offer three methods for setting up your Brother machine on a wireless network. If you began the wireless setup from step **6** on page 4 (for Macintosh and mobile devices) go to method **b** (Setup Wizard). For all other users, choose the method you prefer for your environment.

a Setup using the CD-ROM installer and a USB cable (Windows® only)

- You need to temporarily use a USB cable during configuration (cable not included).

It is recommended that you use a PC wirelessly connected to your network for this method.

If you are using Windows® XP, or currently using a computer connected to an access point/router by network cable, you need to know your wireless settings. Please write down your wireless network settings in the area on page 13.

Now go to

page 14



For Wireless Network Users

SSID (Network Name) / Network Key

Please do not contact Brother Customer Service for assistance without the wireless security information. We cannot assist you in locating your network security settings.

Item	Record the current wireless network settings
SSID (Network Name)	
Network Key	

* The Network Key may also be described as the Password, Security Key or Encryption Key.

Note

If you do not know this information (SSID and Network Key), you cannot continue the wireless setup.

How can I find this information?

- 1) You should see the documentation provided with your wireless access point/router.
- 2) The initial network name could be the manufacturer's name or the model name.
- 3) If you do not know the security information, please consult the router manufacturer, your system administrator, or internet provider.

b Manual setup from the control panel using the Setup Wizard (Macintosh, Mobile Devices and Windows®)

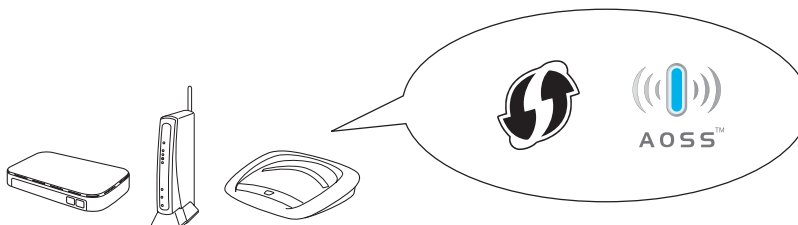
If your wireless access point/router does not support WPS (Wi-Fi Protected Setup) or AOSS™, **write down the wireless network settings** of your wireless access point/router in the area above.

Now go to

page 16

c One-push Setup using WPS or AOSS™ (Windows® and Macintosh)

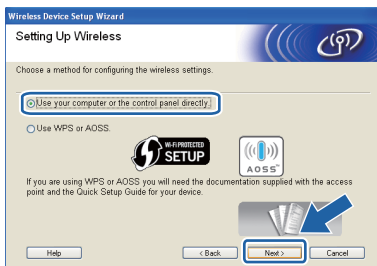
If your wireless access point/router supports automatic wireless (one-push) setup (WPS or AOSS™), you can find instructions in the Network User's Guide on the CD-ROM. To set up your machine in any other wireless environment (Ad-hoc mode) you can find instructions in the Network User's Guide on the CD-ROM.





17 Setup using the CD-ROM installer and a USB cable (Windows® only)

- a** Put the supplied installer CD-ROM into your CD-ROM drive. Follow the on-screen instructions.
- b** The CD-ROM Top Menu will appear. Click **Install MFL-Pro Suite** and click **Yes** if you accept the license agreements. Follow the on-screen instructions.
- c** Choose **Wireless Network Connection**, and then click **Next**.
- d** When **Firewall/AntiVirus detected** screen appears, choose **Change the Firewall port settings to enable network connection and continue with the installation. (Recommended)** and click **Next**.
If you are using a firewall other than the Windows® Firewall see the instructions provided with your firewall software for information on how to add the following network ports.
 - For network scanning, add UDP port 54925.
 - For network PC-Fax receiving, add UDP port 54926.
 - If you still have trouble with your network connection, add UDP port 137 and 161.
- e** Choose **Use your computer or the control panel directly.** and then click **Next**.



- f** Choose **Temporarily use a USB cable (Recommended)** and then click **Next**.



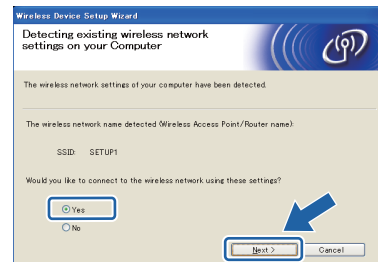
Note

If the **Important Notice** appears, check the box after confirming the SSID and Network Key, then click **Next**.

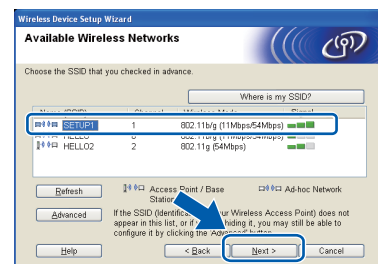
- g** Temporarily connect the USB cable (not included) directly to the computer and the machine.

If the confirmation screen appears, check the box and click **Next**, go to **h**. Otherwise, go to **i**.

- h** When the following screen appears, check **Yes** if you want to connect to the listed SSID. Click **Next** and go to **k**.



- i** When the following screen appears, the wizard will search for wireless networks available to your machine. Choose the SSID that you wrote down for your network in step **16-a** on page 12, and then click **Next**.



Note

- If the list is blank, check that the access point has power and is broadcasting the SSID, and then see if the machine and the access point are within range for wireless communication. Then click **Refresh**.
- If your access point is set to not broadcast the SSID you can manually add it by clicking the **Advanced** button. Follow the on-screen instructions for entering the **Name (SSID)**, and then click **Next**.



For Wireless Network Users

j Enter the **Network Key** you wrote down in step **16-a** on page 12 and then enter the key again in **Confirm Network Key**, then click **Next**.

Note

*If your network is not configured for Authentication and Encryption, the following screen will appear. To continue configuration, click **OK** and go to **k**.*



k Click **Next**. The settings will be sent to your machine.

Note

- The settings will remain unchanged if you click **Cancel**.
- If you want to manually enter the IP address settings of your machine, click **Change IP Address** and enter the necessary IP address settings for your network.
- If the wireless setup failure screen appears, click **Retry**.

l Disconnect the USB cable between the computer and the machine.

m Click **Next** to continue to install MFL-Pro Suite.



Wireless setup is now complete. A four level indicator at the upper right of your machine's LCD will show the wireless signal strength of your access point/router.

To install MFL-Pro Suite, continue to step **19-e** on page 17.

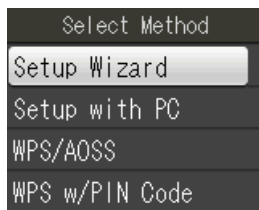
Now go to

Page 17



17 Manual setup from the control panel using the Setup Wizard (Macintosh, Mobile Devices and Windows®)

- a** If you began the wireless setup from step **6** on page 4 (for Macintosh and mobile devices), press **▲** or **▼** to choose **Setup Wizard** and press **OK**.
Then go to **c**.
All other users go to **b**.



- b** On your machine, press **Menu**.
Press **▲** or **▼** to choose **Network** and press **OK**.
Press **▲** or **▼** to choose **Setup Wizard** and press **OK**.
- c** When **Enable WLAN?** is displayed, press **OK** to accept.
This will start the wireless setup wizard.
To cancel, press **Stop/Exit**.
- d** The machine will search for available SSIDs. It will take several seconds to display a list of available SSIDs.
If a list of SSIDs is displayed, press **▲** or **▼** to choose the SSID you wrote down in step **16-b** on page 13, then press **OK**.
- If the wireless access point/router of the selected SSID supports WPS and the machine asks to use WPS, go to **e**.
If the machine asks you to enter a Network Key, go to **f**.
Otherwise, go to **g**.

Note

- If a list of SSIDs is not displayed, make sure your access point is on. Move your machine closer to the access point and try starting from **b** again.
- If your access point is set to not broadcast the SSID, you will have to manually add the SSID name. For details, see the Network User's Guide.

- e** Press **1** (**Yes**) to connect your machine using WPS. (If you choose **2** (**No**) to continue manual setting, go to **f** to enter a Network Key.)

When the LCD shows **Start WPS**, press the WPS button on your wireless access point/router, and then press **1** (**Next**) to proceed.

Go to **g**.

- f** Enter the Network Key you wrote down in step **16-b** on page 13 using the dial pad to choose each letter or number.

The letters appear in this order: lower case, upper case and then numbers. To move the cursor left or right, press **◀** or **▶**.

Press **OK** when you have entered all the characters, then press **1** (**Yes**) to apply your settings.

- g** Your machine will now try to connect to your wireless network. It may take a few minutes.

- h** A connection result message appears for 60 seconds on the LCD and a wireless LAN report will automatically be printed.



Wireless setup is now complete. A four level indicator at the upper right of your machine's LCD will show the wireless signal strength of your access point/router.



Note

*Mobile Device users: When using applications such as AirPrint or Brother iPrint&Scan with your machine, please refer to the application's User's Guide. To download the User's Guide, go to the **Manuals** download section of your model's home page on the Brother Solutions Center at <http://solutions.brother.com/>.*

For computer users, please install MFL-Pro Suite, continue to step 18.

For Macintosh Users:

Now go to

Page 18

For Windows® Users:

Now go to

Page 17



Install the drivers & software

(Windows® XP Home/XP Professional/Windows Vista®/Windows® 7)

18 Before you install

Make sure that your computer is ON and you are logged on with Administrator rights.

19 Install MFL-Pro Suite

- a** Put the supplied installer CD-ROM into your CD-ROM drive. Follow the on-screen instructions.
- b** The CD-ROM Top Menu will appear. Click **Install MFL-Pro Suite** and click **Yes** if you accept the license agreements. Follow the on-screen instructions.
- c** Choose **Wireless Network Connection**, and then click **Next**.
- d** When **Firewall/AntiVirus detected** screen appears, choose **Change the Firewall port settings to enable network connection and continue with the installation. (Recommended)** and click **Next**.
If you are using a firewall other than the Windows® Firewall see the instructions provided with your firewall software for information on how to add the following network ports.
 - For network scanning, add UDP port 54925.
 - For network PC-Fax receiving, add UDP port 54926.
 - If you still have trouble with your network connection, add UDP port 137 and 161.
- e** Choose your machine from the list, and then click **Next**.

Note

*If you are using WEP and the LCD displayed **Connected** but your machine is not found on the network, make sure you entered the WEP key correctly. The WEP key is case sensitive.*

- f** The installation of the Brother drivers will automatically start. The installation screens appear one after another.

- g** When the **On-Line Registration** screen is displayed, make your selection and follow the on-screen instructions.
- h** If you do not want to set your machine as the Default printer, uncheck **Set as Default Printer** and then click **Next**.

20 Finish and restart

- a** Click **Finish** to restart your computer. After restarting the computer, you must be logged on with Administrator rights.
- b** The following screens will appear.
 - When the **Check for Firmware Updates** screen appears, choose the firmware update setting you want and click **OK**.
 - When the **Brother Product Research & Support Program** starts up, follow the on-screen instructions.

Note

*Internet access is required for the firmware update and the **Brother Product Research & Support Program**.*

Finish

The installation is now complete.

Now go to

Proceed to Install Optional Applications on page 19.

Note

XML Paper Specification Printer Driver
The XML Paper Specification Printer Driver is the most suitable driver for Windows Vista® and Windows® 7 when printing from applications that use the XML Paper Specification documents. Please download the latest driver by accessing the Brother Solutions Center at <http://solutions.brother.com/>.



Install the drivers & software (Mac OS X 10.4.11, 10.5.x, 10.6.x)

18

Before you install

Make sure your machine is connected to the power and your Macintosh is ON. You must be logged on with Administrator rights.

19

Install MFL-Pro Suite

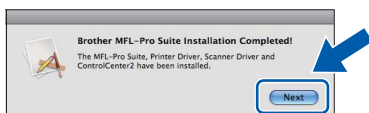
- a** Put the supplied installer CD-ROM into your CD-ROM drive.
- b** Double-click the **Start Here OSX** icon to install.
- c** Choose **Wireless Network Connection**, and then click **Next**.
- d** The Brother software will search for the Brother device in your wireless network. If the machine is configured for your network, choose the device you want to install, and then click **Next**.



Note

*If your wireless settings fail, the **Wireless Device Setup Wizard** screen appears. Follow the on-screen instructions to complete the wireless configuration.*

- e** Please wait for the software to install. After the installation, choose your machine from the list, and then click **OK**.
- f** When this screen appears, click **Next**.



Finish

The installation is now complete.



Note

If you began the setup from step 6 on page 4, go back to step 7 to continue the machine settings.

1

Install optional applications

You can install the following applications.

FaceFilter Studio/BookScan & Whiteboard Suite supported by Reallusion, Inc

Homepage Print 2 supported by Corpus¹

¹ See the *Software User's Guide* for details.


Note

- *The machine must be ON and connected to the computer.*
- *Some applications require Internet access.*
- *Make sure you are logged on with Administrator rights.*
- *This application is not available for Windows Server® 2003/2008 series.*

- a Open the top menu again by ejecting and then reinserting the CD-ROM or by double-clicking the **start.exe** program from the root folder.
- b The CD-ROM Top Menu will appear. Choose your language and then click **Additional Applications**.
- c Click the button for the application you want to install.
- d Go back to the **Additional Applications** screen to install more applications.

2

Install FaceFilter Studio Help

- a To run FaceFilter Studio, go to **Start/All Programs/Reallusion/FaceFilter Studio** on your computer.
- b Click **Check for Updates** on the screen or click the  button on the upper right corner of the screen to go to the Reallusion update web page.
- c Click the **Download** button and choose a folder to save the file in.
- d Close FaceFilter Studio before you start the installer for FaceFilter Studio Help. Double-click the downloaded file from the folder you specified and follow the on-screen instructions for installation.

Note

*To view the complete FaceFilter Studio Help, choose **Start/All Programs/Reallusion/FaceFilter Studio/FaceFilter Studio Help** on your computer.*

Reset the network settings to factory default

To restore all network settings of the internal Print/Scan server to factory default, please follow the steps below.

- a** Make sure the machine is not operating.
- b** Press **Menu**.
- c** Press **▲** or **▼** to choose **Network**.
Press **OK**.
- d** Press **▲** or **▼** to choose **Network Reset**.
Press **OK**.
- e** Press **1** to choose **Yes**.
- f** Press **1** to choose **Yes**.
- g** The machine will restart, and the reset is complete.

Entering Text for Wireless Settings

Most number keys have three or four letters printed on them. The keys for **0**, **#** and ***** do not have printed letters because they are used for special characters.

By pressing the correct number key repeatedly, you can access the character you want.

Inserting spaces

To enter a space in a name, press **►** twice.

Making corrections

If you entered a character incorrectly and want to change it, press **◀** or **►** to move the cursor to the incorrect character, press **Clear**. Re-enter the correct character. You can also back up and insert a character.

Repeating characters

If you need to enter a character that is on the same key as the character before, press **►** to move the cursor to the right before you press the key again.

Special characters and symbols

Press *****, **#** or **0** repeatedly until you see the special character or symbol you want.

Press ***** for (space) ! " # \$ % & ' () * + , - . /

Press **#** for : ; < = > ? @ [] ^ _

Press **0** for 0 \ { | } ~

Trademarks

The Brother logo is a registered trademark of Brother Industries, Ltd.

Brother is a registered trademark of Brother Industries, Ltd.

Windows Vista is either a registered trademark or trademark of Microsoft Corporation in the United States and/or other countries.

Windows and Windows Server are registered trademarks of Microsoft Corporation in the United States and/or other countries.

Macintosh and Mac OS are trademarks of Apple Inc., registered in the United States and other countries.

FaceFilter Studio is a trademark of Reallusion, Inc.

AOSS is a trademark of Buffalo Inc.

WPA, WPA2 and Wi-Fi Protected Setup are either trademarks or registered trademarks of Wi-Fi Alliance in the United States and/or other countries.

Each company whose software title is mentioned in this manual has a Software License Agreement specific to its proprietary programs.

AirPrint is a trademark of Apple Inc.

Any trade names and product names of companies appearing on Brother products, related documents and any other materials are all trademarks or registered trademarks of those respective companies.

Compilation and Publication

Under the supervision of Brother Industries, Ltd., this manual has been compiled and published, covering the latest product descriptions and specifications.

The contents of this manual and the specifications of this product are subject to change without notice.

Brother reserves the right to make changes without notice in the specifications and materials contained herein and shall not be responsible for any damages (including consequential) caused by reliance on the materials presented, including but not limited to typographical and other errors relating to the publication.

Copyright and License

©2011 Brother Industries, Ltd. All rights reserved.

This product includes software developed by the following vendors:

©1983-1998 PACIFIC SOFTWARES, INC.

©2008 Devicescape Software, Inc.

This product includes the "KASAGO TCP/IP" software developed by ZUKEN ELMIC, Inc.



**BROTHER
CREATIVECENTER**



Get inspired. If you're using Windows®, double-click the Brother CreativeCenter icon on your desktop to access our FREE web site with many ideas and resources for personal and professional use.

Mac users can access Brother CreativeCenter at this web address: <http://www.brother.com/creativecenter/>