

For Windows® 7 Users

Additional item to 'Computer Requirements' in the User's Guide

Computer requirements

Computer Platform & Operating System Version ¹	Processor Minimum Speed	Minimum RAM	Recommended RAM	Hard Disk Space to install		Supported PC Software Functions	Supported PC Interface ³
				For Drivers	For Applications		
Windows® 7 ²	Intel® Pentium® 4 or equivalent 64-bit (Intel® 64 or AMD64) supported CPU	1GB (32-bit) 2GB (64-bit)	1GB (32-bit) 2GB (64-bit)	650MB	1.2GB	Printing, PC-FAX ⁴ , Scanning	USB, 10/100 Base TX (Ethernet), Wireless 802.11b/g

1 Internet Explorer® 5.5 or greater.
2 For WIA, 1200 × 1200 resolution. Brother Scanner Utility enables to enhance up to 19200 × 19200 dpi.
3 Third party USB ports are not supported.
4 PC FAX supports black and white only.

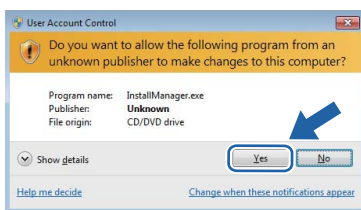
For the latest driver updates, visit us at <http://solutions.brother.com/>. All trademarks, brand and product names are property of their respective companies.

Instructions for installation

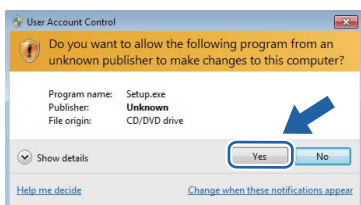
(DCP-9010CN/MFC-9010CN/MFC-9120CN users)

If the **User Account Control** dialog box appears on your computer during installation of the driver and software or BRAdmin Light for Windows®, click **Yes**. Then, proceed to the next step in the Quick Setup Guide.

Driver & Software installation



BRAdmin Light for Windows® installation



Note

If either of the following screens appear, click the check box and click **Install** to complete the installation properly.



For all Windows® users

The data format of the HTML User's Guides has now changed to PDF.