



Please read the Product Safety Guide first before you set up your machine. Then, please read this Quick Setup Guide for the correct setup and installation.


 WARNING	<u>WARNING</u> indicates a potentially hazardous situation which, if not avoided, could result in death or serious injuries.
 CAUTION	<u>CAUTION</u> indicates a potentially hazardous situation which, if not avoided, may result in minor or moderate injuries.

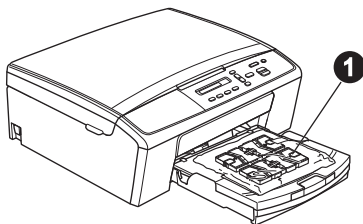
1

Unpack the machine

WARNING

Plastic bags are used in the packing of your machine. Plastic bags are not toys. To avoid the danger of suffocation, keep these bags away from babies and children and dispose of them correctly.

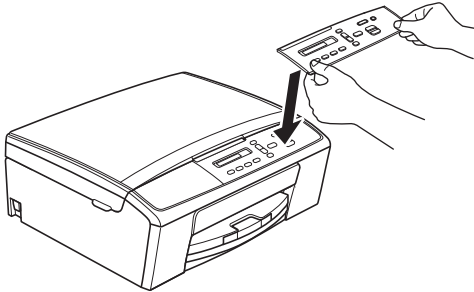
- a** Remove the protective tape and film covering the machine, and also from the LCD.
- b** Remove the plastic bag  containing the ink cartridges from on top of the paper tray.



2

Attachment of the cover of the control panel

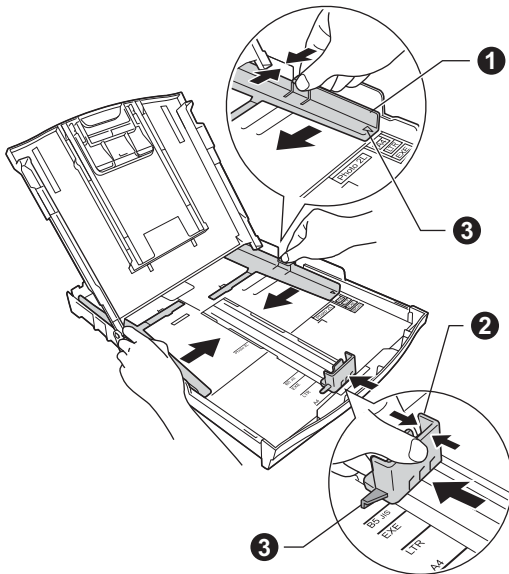
- a** Attach the cover of the control panel to the machine.



3

Load plain A4 paper

- a** Pull the paper tray completely out of the machine.
- b** Open the output paper tray cover.
- c** With both hands, gently press and slide the paper side guides **1** and then the paper length guide **2** to fit the paper size.
- Make sure that the triangular marks **3** on the paper side guides **1** and paper length guide **2** line up with the mark for the paper size you are using.



d

Fan the stack of paper well to avoid paper jams and misfeeds.



Note

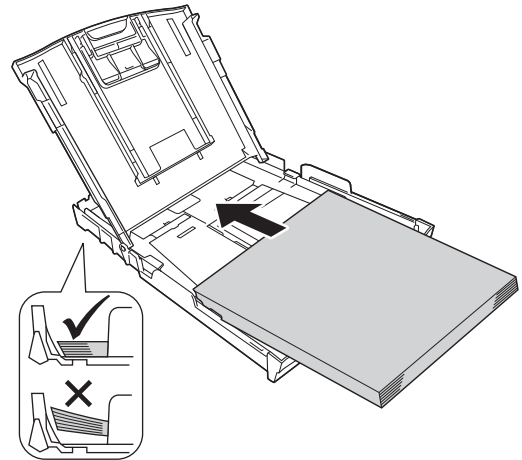
Always make sure that the paper is not curled or wrinkled.

e

Check that the paper is flat in the tray.

Important

Be careful that you do not push the paper in too far; it may lift at the back of the tray and cause paper feed problems.



f

Gently adjust the paper side guides to the paper with both hands.

g

Close the output paper tray cover.

h

Slowly push the paper tray completely into the machine.

i

While holding the paper tray in place, pull out the paper support until it clicks, and then unfold the paper support flap.

4

Connect the power cord

⚠ WARNING

The machine must be fitted with an earthed plug.

📌 Important

DO NOT connect the USB cable yet (if you are using a USB cable).

- a** Connect the power cord.

📌 Note

The Warning LED on the control panel will stay on until you have installed the ink cartridges.

5

Choose your language

- a** When the LCD shows this message, press **OK**.
- b** Press **▲** or **▼** to choose your language and press **OK**.
- c** Press **▲** (Yes) to confirm the language setting.

6

Install the ink cartridges

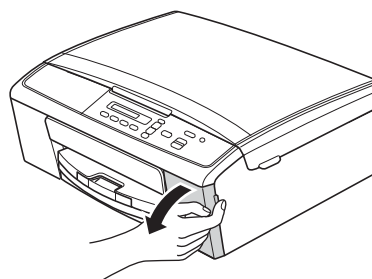
⚠ CAUTION

If ink gets in your eyes, wash it out with water at once and call a doctor if you are concerned.

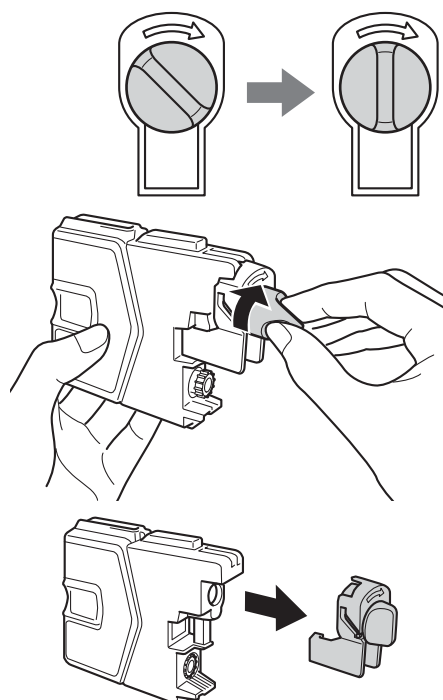
📌 Note

Make sure you install the Introductory ink cartridges included with your machine first.

- a** Make sure that the power is turned on.
- b** Open the ink cartridge cover.



- c** Remove the green protective part.
- d** Unpack the ink cartridge.



📌 Important

DO NOT shake the ink cartridges. If ink stains your skin or clothing, wash with soap or detergent at once.

- e** Take care to match the colour of the lever with the cartridge colour.
Install each ink cartridge in the direction of the arrow on the label.
- f** Gently push the ink cartridge until it clicks. After all the ink cartridges are installed close the ink cartridge cover.

7 Check the print quality

- a** When the preparation process has finished, the LCD shows this message

Set Paper and

↑

Press Start

Press **Colour Start**.

- b** Check the quality of the four colour blocks on the sheet. (black/yellow/cyan/magenta)
- c** If all lines are clear and visible, press ▲ (Yes) to finish the quality check and go to step **8**.
If you can see missing short lines, press ▼ (No) and follow the steps on the LCD.

8 Set the date and time

- a** Press **Menu**.
- b** Press ▲ or ▼ to choose 0.Initial Setup.
Press **OK**.
- c** Press ▲ or ▼ to choose 1.Date&Time.
Press **OK**.
- d** Press ▲ or ▼ to enter the last two digits of the year, and then press **OK**.
- e** Repeat for the Month and Day, and then Hours and Minutes in 24-hour format.
- f** Press **Stop/Exit**.

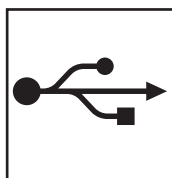
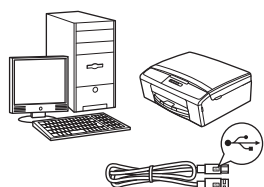
9

Choose your connection type

These installation instructions are for Windows® XP Home/XP Professional x64 Edition, Windows Vista®, Windows® 7, and Mac OS X (versions 10.5.8, 10.6.x and 10.7.x).

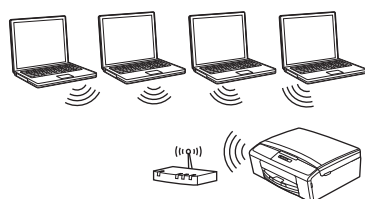
Note

- For Windows Server® 2003/2008/2008 R2, the drivers can be found from your model's download page at <http://solutions.brother.com/>.
- If your computer does not have a CD-ROM drive you can download the latest drivers, manuals and utilities for your model from the Brother Solutions Center at <http://solutions.brother.com/>. Some software applications included on the CD-ROM may not be available as a download.



For USB interface cable

Windows®, go to page 6
Macintosh, go to page 8



For Wireless Network

Windows® and Macintosh,
go to page 10

Windows®
USB
Macintosh

Wireless Network



For USB interface users

(Windows® XP Home/XP Professional x64 Edition/Windows Vista®/Windows® 7)

10 Before you install

Make sure that your computer is ON and you are logged on with Administrator rights.

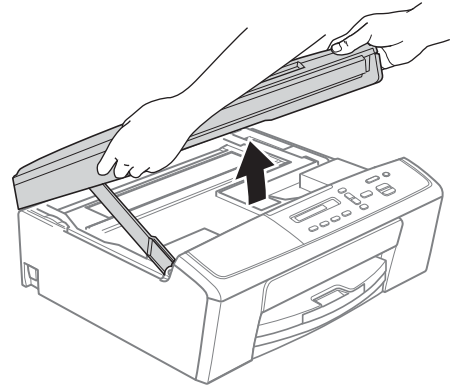
11 Install MFL-Pro Suite

- a** Put the supplied installation CD-ROM into your CD-ROM drive. Follow the on-screen instructions.
- b** The CD-ROM Top Menu will appear. Click **Install MFL-Pro Suite** and click **Yes** if you accept the license agreements. Follow the on-screen instructions.
- c** Choose **Local Connection (USB)**, and then click **Next**. The installation continues.
- d** When this screen appears, go to the next step.

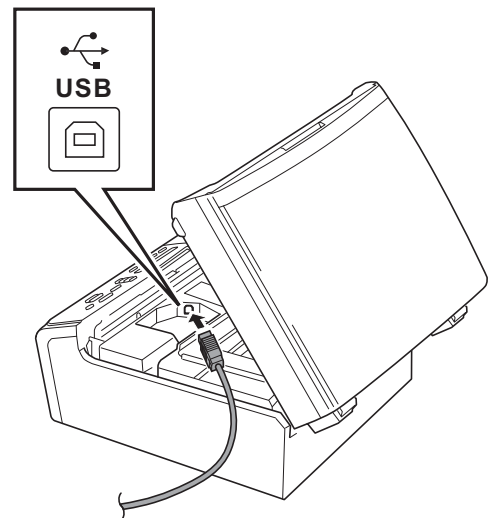


12 Connect the USB cable

a

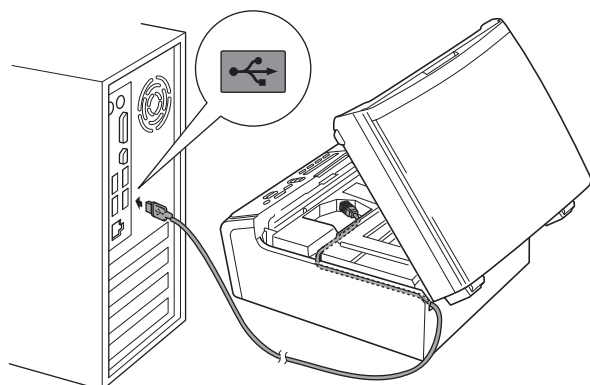


b



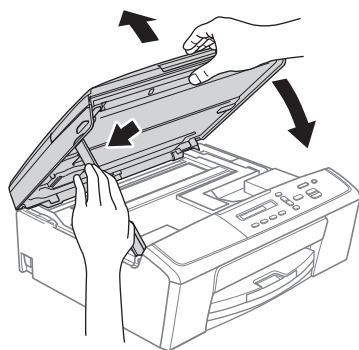


c

**Important**

Make sure that the cable does not restrict the cover from closing, or an error may occur.

d



- e** The installation will continue automatically. The installation screens appear one after another.
- f** When the **On-Line Registration** screen is displayed, make your selection and follow the on-screen instructions.
- g** If you do not want to set your machine as the Default printer, uncheck **Set as Default Printer**(This setting will be applied to the current user.) and then click **Next**.

13

Finish and restart

- a** Click **Finish** to restart your computer. After restarting the computer, you must log on with Administrator rights.
- b** The following screens will appear.
- When the **Software Update Setting** screen appears, choose the software update setting you want and click **OK**.
 - When the Brother Product Research & Support Program starts up, follow the on-screen instructions.
 - When the **Brother Trial Photo Print** screen appears, follow the on-screen instructions to print a test photo.

**Note**

Internet access is required for the software update and the Brother Product Research & Support Program.

Finish

The installation is now complete.

Now go to

Proceed to Install Optional Applications on page 18.

**Note****XML Paper Specification Printer Driver**

The XML Paper Specification Printer Driver is the most suitable driver for Windows Vista® and Windows® 7 when printing from applications that use the XML Paper Specification. Please download the latest driver by accessing the Brother Solutions Center at <http://solutions.brother.com/>.



For USB interface users (Mac OS X 10.5.8 - 10.7.x)

10

Before you install

Make sure your machine is connected to the power and your Macintosh is ON. You must be logged on with Administrator rights.

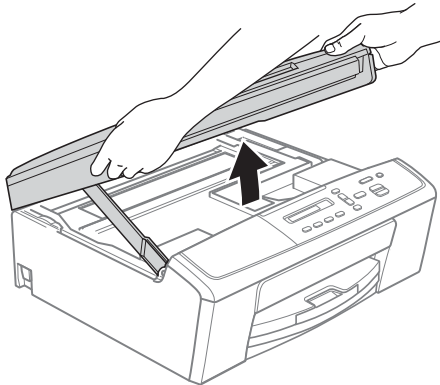
11

Connect the USB cable

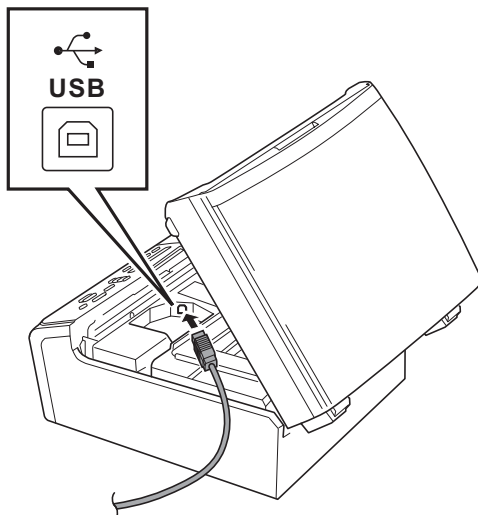
❗ Important

- *DO NOT* connect the machine to a USB port on a keyboard or a non-powered USB hub.
- Connect the machine directly to your Macintosh.

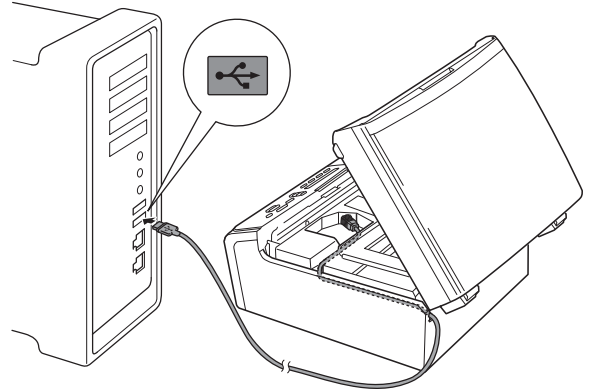
a



b



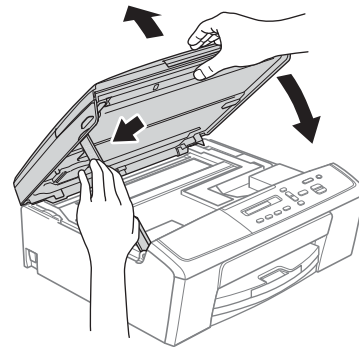
c



❗ Important

Make sure that the cable does not restrict the cover from closing, or an error may occur.

d

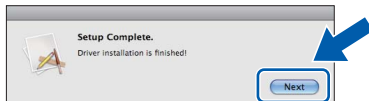




12

Install MFL-Pro Suite

- a** Put the supplied installation CD-ROM into your CD-ROM drive.
- b** Double-click the **Start Here OSX** icon to install.
- c** Choose **Local Connection (USB)**, and then click **Next**. Follow the on-screen instructions.
- d** Please wait for the software to install. After the installation, the Brother software will search for the Brother device. This will take a few moments to complete.
- e** Choose the machine from the list, and then click **OK**.
- f** When this screen appears, click **Next**.

**Finish****The installation is now complete.**



For wireless network interface users

10

Before you begin



Note

If you have previously configured the wireless settings of the machine you must reset the network (LAN) settings before you can configure the wireless settings again.

*On your machine, press **Menu**. Press **▲** or **▼** to choose **3.Network** and press **OK**.*

*Press **▲** or **▼** to choose **0.Network Reset**, and then press **OK**.*

*Press **▲** twice to choose **Reset** and **Yes**.*



Note

To set up your machine in Ad-hoc mode (connected to a wireless capable computer without an access point/router) you can find instructions in the Network User's Guide on the CD-ROM.

You can view the Network User's Guide by following the instructions below.

1 Turn on your computer. Insert the CD-ROM into your CD-ROM drive.

For Windows®:

2 Choose your language. The CD-ROM top menu will appear.

*3 Click **Documentation**, and then click **PDF documents**. The top page will appear.*

4 Click Network User's Guide.

For Macintosh:

*2 Double-click **Documentation**, and then double-click your language folder.*

*3 Double-click **top.pdf**, and then click Network User's Guide.*

11

Choose your wireless install method

The following instructions will offer three methods for installing your Brother machine in a wireless network environment.

a

Configuration using the CD-ROM installer and a USB cable (Windows® only)

- You need to temporarily use a USB cable during configuration (cable not included).

It is recommended that you use a PC wirelessly connected to your network for this method.

If you are using Windows® XP, or currently using a computer connected to an access point/router by network cable, you need to know your wireless settings. Please write down your wireless network settings in the area on page 11.

Now go to

page 12



SSID (Network Name) / Network Key

Please do not contact Brother Customer Service for assistance without the wireless security information. We cannot assist you in locating your network security settings.

Item	Record the current wireless network settings
SSID (Network Name)	
Network Key	

* The Network Key may also be described as the Password, Security Key or Encryption Key.

Note

If you do not know this information (SSID and Network Key), you cannot continue the wireless setup.

How can I find this information?

- 1) You should see the documentation provided with your wireless access point/router.
- 2) The initial network name could be the manufacturer's name or the model name.
- 3) If you do not know the security information, please consult the router manufacturer, your system administrator, or internet provider.

b Manual configuration from the control panel (Windows® and Macintosh)

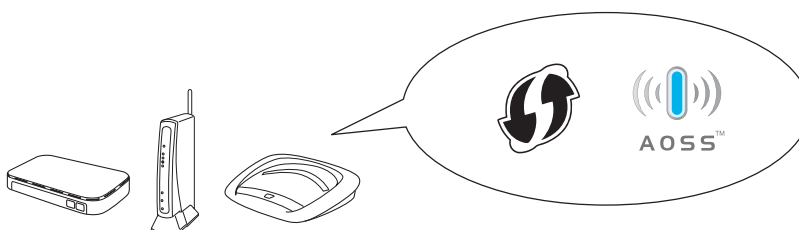
If your wireless access point/router does not support WPS (Wi-Fi Protected Setup™) or AOSS™, write down the wireless network settings of your wireless access point/router in the area above.

Now go to

page 14

c One-push configuration using WPS or AOSS™ (Windows® and Macintosh)

If your wireless access point/router supports automatic wireless (one-push) setup (WPS or AOSS™), you can find instructions in the Network User's Guide on the CD-ROM. To set up your machine in any other wireless environment (Ad-hoc mode) you can find instructions in the Network User's Guide on the CD-ROM.

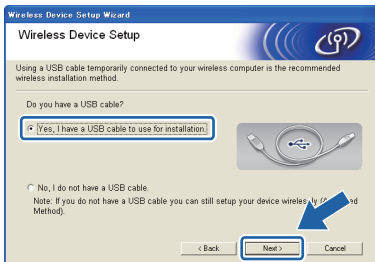




12

Configuration using the CD-ROM installer and a USB cable (Windows® only)

- a** Put the supplied installation CD-ROM into your CD-ROM drive. Follow the on-screen instructions.
- b** The CD-ROM Top Menu will appear. Click **Install MFL-Pro Suite** and click **Yes** if you accept the license agreements. Follow the on-screen instructions.
- c** Choose **Wireless Network Connection**, and then click **Next**.
- d** When **Firewall/AntiVirus detected** screen appears, choose **Change the Firewall port settings to enable network connection and continue with the installation. (Recommended)** and click **Next**.
If you are using a firewall other than the Windows® Firewall see the instructions provided with your firewall software for information on how to add the following network ports.
 - For network scanning, add UDP port 54925.
 - If you still have trouble with your network connection, add UDP port 137 and 161.
- e** Choose **Yes, I have a USB cable to use for installation.** and then click **Next**.



Note

If the **Important Notice** appears, check the box after you confirm the SSID and Network Key, and then click **Next**.

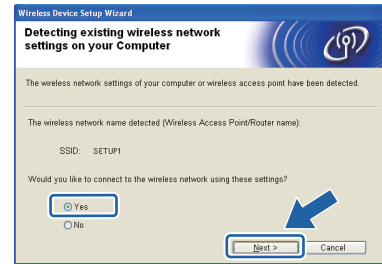
f

Temporarily connect the USB cable (not included) directly to the computer and the machine.

If the confirmation screen appears, check the box and click **Next**, go to **g**. Otherwise, go to **h**.

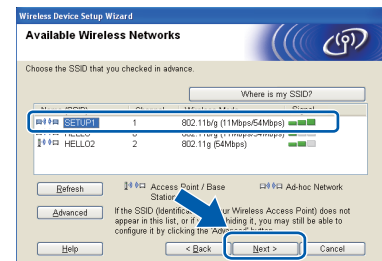
g

When the following screen appears, check **Yes** if you want to connect to the listed SSID. Click **Next** and go to **j**.



h

When the following screen appears, the wizard will search for wireless networks available to your machine. Choose the SSID that you wrote down for your network in step **11-a** on page 10, and then click **Next**.



Note

- If the list is blank, check that the access point has power and is broadcasting the SSID, and then see if the machine and the access point are within range for wireless communication. Then click **Refresh**.
- If your access point is set to not broadcast the SSID you can manually add it by clicking the **Advanced** button. Follow the on-screen instructions for entering the **Name (SSID)**, and then click **Next**.

i

Enter the **Network Key** you wrote down in step **11-a** on page 10 and then click **Next**.



Note

If your network is not configured for Authentication and Encryption, the following screen will appear. To continue configuration, click **OK** and go to **j**.





j Click **Next**. The settings will be sent to your machine.



Note

- The settings will remain unchanged if you click **Cancel**.
- If you want to manually enter the IP address settings of your machine, click **Change IP Address** and enter the necessary IP address settings for your network.
- If the wireless setup failure screen appears, click **Retry** and try starting from step **h** again.

k Disconnect the USB cable between the computer and the machine.

l Click **Next** to continue to install MFL-Pro Suite.



Wireless setup is now complete.

To install MFL-Pro Suite, continue to step **14-e** on page 15.

Now go to

Page 15



12 Manual configuration from the control panel (Windows® and Macintosh)

- a** On your machine, press **Menu**.
Press **▲** or **▼** to choose 3. *Network* and press **OK**.
Press **▲** or **▼** to choose 2. *Setup Wizard* and press **OK**.

When *WLAN Enable?* is displayed, press **▲** to accept.
This will start the wireless setup wizard.
To cancel, press **Stop/Exit**.

- b** The machine will search for available SSIDs. It will take several seconds to display a list of available SSIDs.
If a list of SSIDs is displayed, press **▲** or **▼** to choose the SSID you wrote down in step **11-b** on page 11, then press **OK**.

If the wireless access point/router of the selected SSID supports WPS and the machine asks to use WPS, press **▲** (*Next*) and go to **c**.
If the machine asks you to enter a Network Key, go to **d**.
Otherwise, go to **e**.



Note

- If a list of SSIDs is not displayed, make sure your access point is on. Move your machine closer to the access point and try starting from **a** again.
- If your access point is set to not broadcast the SSID, you will have to manually add the SSID name. For details, see the Network User's Guide.

- c** Press **▲** (*Yes*) to connect your machine using WPS. (If you choose **▼** (*No*) to continue manual setting, go to **d** to enter a Network Key.)

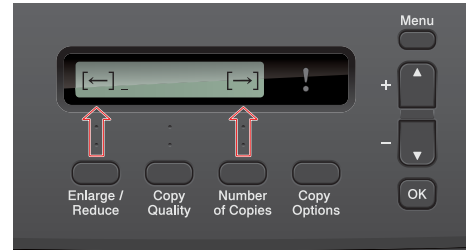
When the LCD shows *Press WPS on rtr*, press the WPS button on your wireless access point/router, and then press **▲** (*Next*) and **▲** (*Yes*) to proceed.

Go to **e**.

d

Enter the Network Key you wrote down in step **11-b** on page 11 using the **▲**, **▼** keys to choose each letter or number.

Use **Enlarge/Reduce** key or **Number of Copies** key to move the cursor left or right.



For example, to enter the letter *a*, press the **▲** key once. To enter the number *3*, hold down the **▲** key until it appears.

The letters appear in this order: lower case, upper case, numbers and then special letters.

Press **OK** when you have entered all the characters, then press **▲** (*Yes*) to apply your settings.

e

Your machine will now try to connect to your wireless network. It may take a few minutes.

f

A connection result message appears for 60 seconds on the LCD and a wireless LAN report will automatically be printed.



Wireless setup is now complete.

To install MFL-Pro Suite, continue to step 13.

For Windows® Users:

Now go to

Page 15

For Macintosh Users:

Now go to

Page 17



Install the drivers & software

(Windows® XP Home/XP Professional x64 Edition/Windows Vista®/Windows® 7)

13

Before you install

Make sure that your computer is ON and you are logged on with Administrator rights.

14

Install MFL-Pro Suite

a Put the supplied installation CD-ROM into your CD-ROM drive. Follow the on-screen instructions.

b The CD-ROM Top Menu will appear. Click **Install MFL-Pro Suite** and click **Yes** if you accept the license agreements. Follow the on-screen instructions.

c Choose **Wireless Network Connection**, and then click **Next**.

d When **Firewall/AntiVirus detected** screen appears, choose **Change the Firewall port settings to enable network connection and continue with the installation. (Recommended)** and click **Next**.

If you are using a firewall other than the Windows® Firewall see the instructions provided with your firewall software for information on how to add the following network ports.

- For network scanning, add UDP port 54925.
- If you still have trouble with your network connection, add UDP port 137 and 161.

e Choose your machine from the list, and then click **Next**.

Note

- If your wireless settings fail, the **Wireless Device Setup Wizard** will appear during the installation of MFL-Pro Suite. Confirm your settings by following the on-screen instructions. If you encounter this failure, go to step **11-b** on page 11 and setup the wireless connection again.
- If you are using WEP and the LCD displayed *Connected* but your machine is not found, make sure you entered the WEP key correctly. The WEP key is case sensitive.

f The installation of the Brother drivers will automatically continue. The installation screens appear one after another.

g When the **On-Line Registration** screen is displayed, make your selection and follow the on-screen instructions.

h If you do not want to set your machine as the Default printer, uncheck **Set as Default Printer**(This setting will be applied to the current user.) and then click **Next**.



15

Finish and restart

- a** Click **Finish** to restart your computer. After restarting the computer, you must log on with Administrator rights.
- b** The following screens will appear.
 - When the **Software Update Setting** screen appears, choose the software update setting you want and click **OK**.
 - When the Brother Product Research & Support Program starts up, follow the on-screen instructions.
 - When the **Brother Trial Photo Print** screen appears, follow the on-screen instructions to print a test photo.



Note

Internet access is required for the software update and the Brother Product Research & Support Program.

Finish

The installation is now complete.

Now go to

Proceed to Install Optional Applications on page 18.



Note

XML Paper Specification Printer Driver

The XML Paper Specification Printer Driver is the most suitable driver for Windows Vista® and Windows® 7 when printing from applications that use the XML Paper Specification. Please download the latest driver by accessing the Brother Solutions Center at <http://solutions.brother.com/>.



Install the drivers & software (Mac OS X 10.5.8 - 10.7.x)

13 Before you install

Make sure your machine is connected to the power and your Macintosh is ON. You must be logged on with Administrator rights.

14 Install MFL-Pro Suite

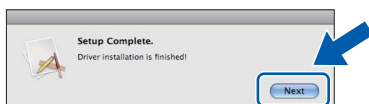
- a** Put the supplied installation CD-ROM into your CD-ROM drive.
- b** Double-click the **Start Here OSX** icon to install.
- c** Choose **Wireless Network Connection**, and then click **Next**.
- d** The Brother software will search for the Brother device in your wireless network. If the machine is configured for your network, choose the device you want to install, and then click **Next**.



Note

*If your wireless settings fail, the **Wireless Device Setup Wizard** screen appears. Follow the on-screen instructions to complete the wireless configuration.*

- e** Please wait for the software to install. After the installation, choose your machine from the list, and then click **OK**.
- f** When this screen appears, click **Next**.



Finish

The installation is now complete.

1 Install optional applications

You can install the following applications.

FaceFilter Studio and BookScan&Whiteboard Suite supported by Reallusion, Inc

Homepage Print 2 supported by Corpus¹

¹ See the *Software User's Guide* for details.

Note


- The machine must be ON and connected to the computer.
- Some applications require Internet access.
- Make sure you are logged on with Administrator rights.
- This application is not available for Windows Server® 2003/2008 series.

- Open the top menu again by ejecting and then reinserting the CD-ROM or by double-clicking the **start.exe** program from the root folder.
- The CD-ROM Top Menu will appear. Choose your language and then click **Additional Applications**.
- Click the button for the application you want to install.
- Go back to the **Additional Applications** screen to install more applications.

2 Install FaceFilter Studio Help

- To run FaceFilter Studio, go to **Start/All Programs/Reallusion/FaceFilter Studio** on your computer.
- Click **Check for Updates** on the screen.

Note

You can also go to the Reallusion update web page by clicking the  button in the upper right corner of this screen.

- Click the **Download** button and choose a folder to save the file in.
- Close FaceFilter Studio before you start the installer for FaceFilter Studio Help. Double-click the downloaded file from the folder you specified and follow the on-screen instructions for installation.

Note

To view the complete FaceFilter Studio Help, choose **Start/All Programs/Reallusion/FaceFilter Studio/FaceFilter Studio Help** on your computer.

Reset the network settings to factory default

To restore all network settings of the internal Print/Scan server to factory default, please follow the steps below.

- a** Make sure the machine is not operating.
- b** Press **Menu**.
- c** Press **▲** or **▼** to choose **3.Network**.
Press **OK**.
- d** Press **▲** or **▼** to choose **0.Network Reset**.
Press **OK**.
- e** Press **▲** to choose **Reset**.
- f** Press **▲** to choose **Yes**.
- g** The machine will restart, and the reset is complete.

Entering Text for Wireless Settings

Press **▲** or **▼** repeatedly to select a character from the list below:

abcdefghijklmnopqrstuvwxyzABCDEFGHIJKLMNOPQRSTUVWXYZ0123456789

(space)!"#\$%&'()*+,-./:;<=>?@[\\]^_`{|}~

Press **Enlarge/Reduce** key or **Number of Copies** key to move the cursor left or right.



Note

Making corrections

*If you entered an incorrect letter and want to change it, press **Enlarge/Reduce** key or **Number of Copies** key to position the cursor under the incorrect letter. Use the **▲** and **▼** keys to change to the correct letter, then press **Number of Copies** key repeatedly to move the cursor back to the end of the text. If you press the **Stop/Exit** key, all letters above and to the right of the cursor will be deleted.*

Trademarks

The Brother logo is a registered trademark of Brother Industries, Ltd.

Brother is a registered trademark of Brother Industries, Ltd.

Windows Vista is either a registered trademark or trademark of Microsoft Corporation in the United States and/or other countries.

Windows and Windows Server are registered trademarks of Microsoft Corporation in the United States and other countries.

Macintosh and Mac OS are trademarks of Apple Inc., registered in the U.S. and other countries.

FaceFilter Studio is a trademark of Reallusion, Inc.

AOSS is a trademark of Buffalo Inc.

WPA, WPA2 and Wi-Fi Protected Setup are marks of the Wi-Fi Alliance.

Each company whose software title is mentioned in this manual has a Software License Agreement specific to its proprietary programs.

Any trade names and product names of companies appearing on Brother products, related documents and any other materials are all trademarks or registered trademarks of those respective companies.

Compilation and Publication

Under the supervision of Brother Industries, Ltd., this manual has been compiled and published, covering the latest product descriptions and specifications.

The contents of this manual and the specifications of this product are subject to change without notice.

Brother reserves the right to make changes without notice in the specifications and materials contained herein and shall not be responsible for any damages (including consequential) caused by reliance on the materials presented, including but not limited to typographical and other errors relating to the publication.

Copyright and License

©2012 Brother Industries, Ltd. All rights reserved.

This product includes software developed by the following vendors:

©1983-1998 PACIFIC SOFTWARES, INC. ALL RIGHTS RESERVED.

©2008 Devicescape Software, Inc. All rights reserved.

This product includes the "KASAGO TCP/IP" software developed by ZUKEN ELMIC, Inc.



Get inspired. If you're using Windows®, double-click the Brother CreativeCenter icon on your desktop to access our FREE web site with many ideas and resources for personal and professional use.

Mac users can access Brother CreativeCenter at this web address: <http://www.brother.com/creativecenter/>