

Three overlapping circles in shades of blue, with the leftmost circle being the darkest and the rightmost being the lightest.

Product Safety Guide

(HL-S7000DN)

Please read this guide before attempting to operate the product, or before attempting any maintenance. Failure to follow these instructions may result in an increased risk of fire, electrical shock, burns or suffocation. Brother shall not be liable for damage caused where the product owner has failed to follow the instructions set out in this guide.













Read all of the instructions. Save them for later reference.

How to use this guide:

- 1 Read the whole guide before using your machine and keep it for later reference.
- 2 Carefully follow the instructions set out in this guide and always ensure that you follow all warnings and instructions marked on the product.
- 3 If you have concerns about how to use your machine having read this guide, please refer to your local Brother dealer or Brother Customer Service.
- 4 To ensure you understand all of the instructions, study the Symbols and Conventions used in the documentation below.

Symbols and conventions used in the documentation

The following symbols and conventions are used throughout the documentation.
Follow all warnings and instructions marked on the product.

 WARNING <u>WARNING</u> indicates a potentially hazardous situation which, if not avoided, could result in death or serious injuries.	Bold <i>Italics</i> Courier New	Bold typeface identifies specific buttons on the product's control panel or on the computer screen. Italicized typeface emphasizes an important point or refers you to a related topic. Text in the Courier New font identifies messages on the LCD of the product.
 CAUTION <u>CAUTION</u> indicates a potentially hazardous situation which, if not avoided, may result in minor or moderate injuries.		
 Important <u>Important</u> indicates a potentially hazardous situation which, if not avoided, may result in damage to property or loss of product functionality.		
 Prohibition icons indicate actions that must not be performed.		
 This icon indicates that flammable sprays may not be used.		
 This icon indicates that organic solvents such as alcohol and liquids may not be used.		
 This icon indicates that you must not touch the indicated area.		
 This icon indicates that you must not stand on the indicated area.		
 This icon indicates that you may fall down if you stand on the indicated area.		
 Electrical Hazard icons alert you to possible electrical shock.		
 Fire Hazard icons alert you to the possibility of a fire.		
 Notes tell you how you should respond to a situation that may arise or give tips about how the operation works with other features.		

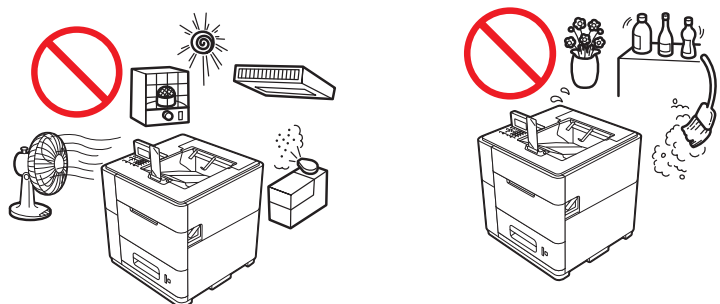
Compilation and Publication Notice

This manual has been compiled and published to provide the latest product safety information at the time of publication. The information contained in this manual may be subject to change.

For the latest manual, please visit us at <http://solutions.brother.com/>.

Choose a safe location for your product

Put your product on a flat, level, stable surface, such as a desk, that is free from vibration and shocks and is not slanted more than 2°. Put the product near a standard earthed electrical socket. Choose a location where the temperature remains between 18°C and 33°C and the humidity is between 20% to 80% (without condensation).



WARNING



DO NOT expose the product to direct sunlight, excessive heat, open flames, corrosive gasses, moisture or dust. Doing so may create a risk of an electrical shock, electrical short or fire. It may also damage the product and/or render it inoperable.



DO NOT place the product near heaters, air conditioners, electrical fans, refrigerators, or water. Doing so may create the risk of a short circuit or fire, should water come into contact with the product (including condensation caused by heating/air conditioning/ventilation equipment).



DO NOT place the product near chemicals or in a place where chemical spillage could occur. In particular organic solvents or liquids may cause the casing and/or cables to melt or dissolve, risking fire or electric shock. They may also cause the product to malfunction or become discoloured.



DO NOT put the product in a location where any slot or opening in the product is obstructed or blocked. These slots and openings are provided for ventilation. Blocking the product's ventilation could create a risk of overheating and/or fire.

Instead:

- Keep a gap of roughly 330 mm between the ventilation hole and the wall.
- Place the product on a solid surface. DO NOT place the product on a bed, sofa, rug, or other similar soft surface.
- DO NOT place this product in a “built-in” installation unless adequate ventilation is provided.

CAUTION

Avoid placing your product in a high-traffic area. If you must place it in a high-traffic area, ensure that the product is in a safe location where it cannot be accidentally knocked-over, which could cause injury to you and serious damage to the product. Also ensure that cords are secured so as not to pose a tripping hazard.

DO NOT connect your product to electrical sockets controlled by wall switches or automatic timers, or to the same circuit as large appliances, such as an air conditioner, copier, shredder, etc. that might disrupt the power supply.

DO NOT place heavy objects on the product. DO NOT place this product on an unstable cart, stand, or table. The product is heavy and may fall, causing injury to you, and serious damage to the product. Particularly if the product is located in an area used by children, ensure it is in a safe and stable position.

! Important

- DO NOT put objects on top of the product. Doing so could increase the risk of overheating and/or fire should the product malfunction.
 - DO NOT place your product next to sources of interference, such as speakers or the base units of non Brother cordless telephones. Doing so may interfere with the operation of the product's electronic components.
 - DO NOT place the machine on more than 2° tilted/slanted surface. When lifting or moving the machine after the ink cartridge is installed, try to keep the machine as level as possible and do not keep the machine tilted for a long time. Tilting the machine may cause ink spillage and internal damage to the machine.
 - Disruption of power can delete information from the product's memory.
 - If there is a power failure or the power cord of the machine is left unplugged for a long period of time, set the date and time again after the power is restored. If the date and time are not set, the product's automatic cleaning function will not work properly and print quality may decrease.
-

General precautions

WARNING

Plastic bags are used in the packing of your machine. Plastic bags are not toys. To avoid the danger of suffocation, keep these bags away from babies and children and dispose of them correctly.

For users with pacemakers

This machine generates a weak magnetic field. If you experience any unusual symptoms with your pacemaker while near the machine, move away from the machine and consult a doctor immediately.



DO NOT use flammable substances near the product. DO NOT use any type of spray, or an organic solvent/liquid containing alcohol or ammonia to clean the inside or outside of the product. Doing so may cause a fire or electrical shock. For instructions on how to clean the product, see ►► User's Guide: *Routine Maintenance*.



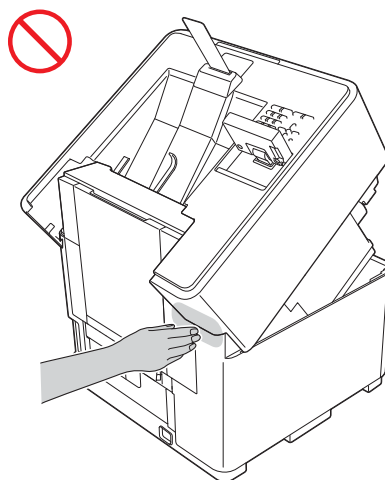
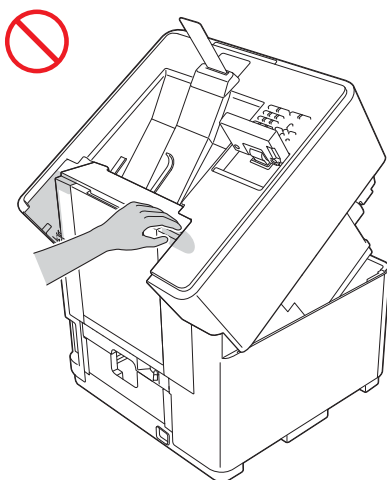
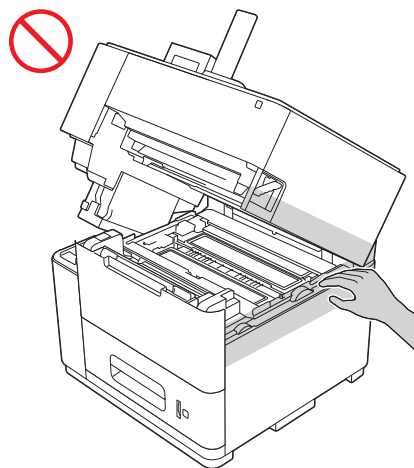
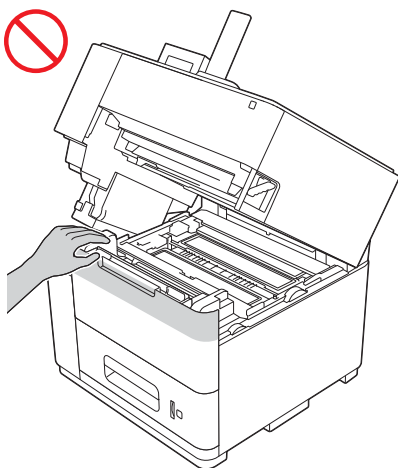
Unplug this product from the wall socket before cleaning the product. DO NOT use liquid or aerosol cleaners. Use a dry, lint-free soft cloth for cleaning.



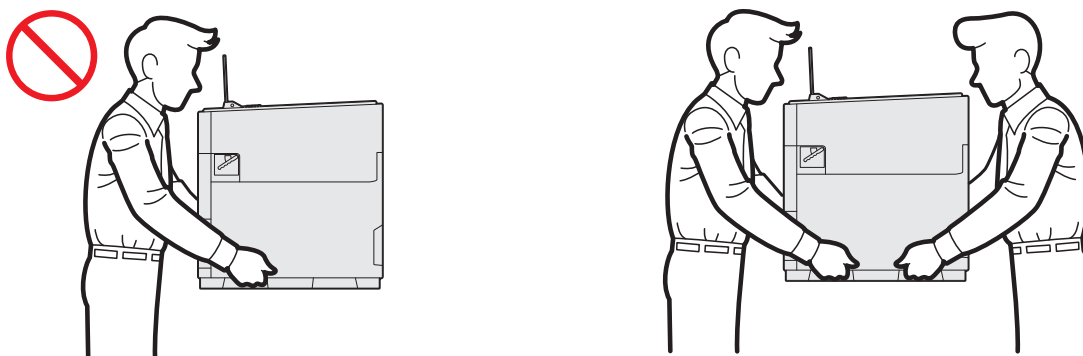
Avoid using this product during an electrical storm. There may be a remote risk of electric shock from lightning.

⚠ CAUTION

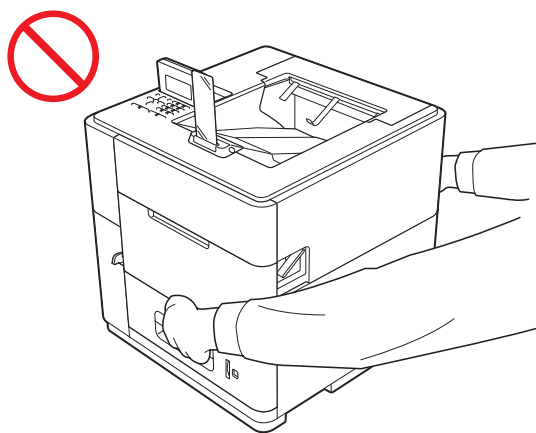
Some areas of the machine can cause injury if covers are opened or closed with force. Take care when placing your hand in the shaded areas shown in the illustrations.



This machine is heavy and weighs more than 40 kg. To prevent possible injuries at least two people should lift the machine by holding it from the front and back. Be careful with the output stopper when moving or lifting the machine. There is a risk of injury if your face or body strikes the output stopper. Be careful not to pinch your fingers when you set the machine back down.

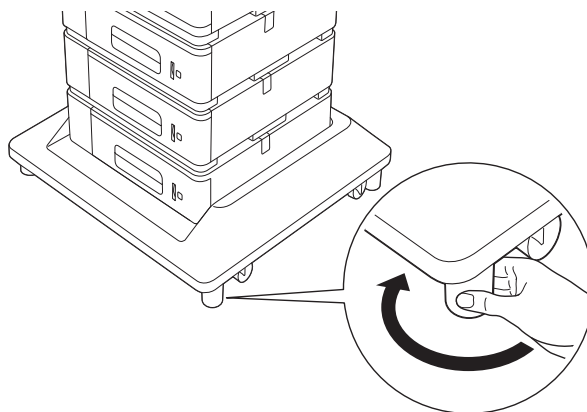


DO NOT carry the machine by holding the paper tray or the duplex tray. Doing this may cause the machine to slip out of your hands. Only carry the machine by placing your hands under the entire machine.

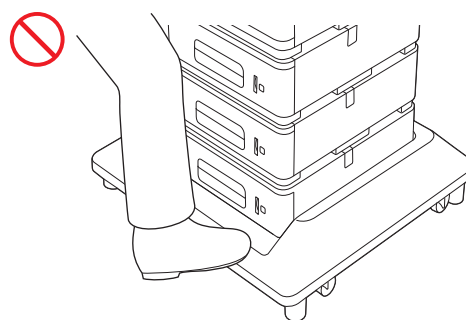
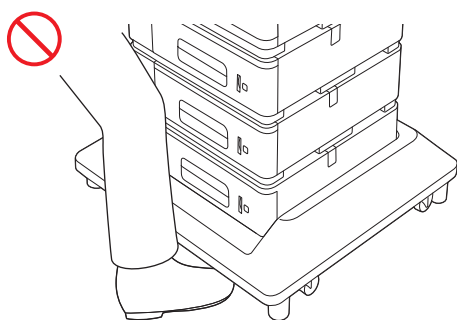


DO NOT carry the product together with the optional lower trays, optional output tray, or the optional stabilizer. These optional devices are not attached to the product, therefore there is a risk of injury or damage if you attempt to carry them together.

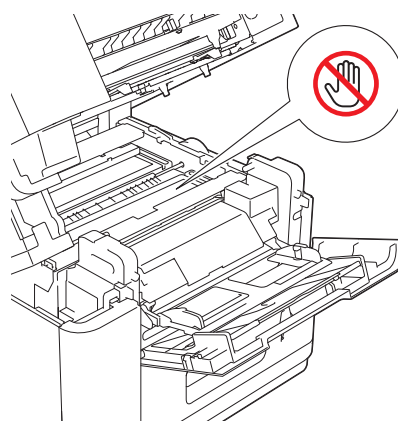
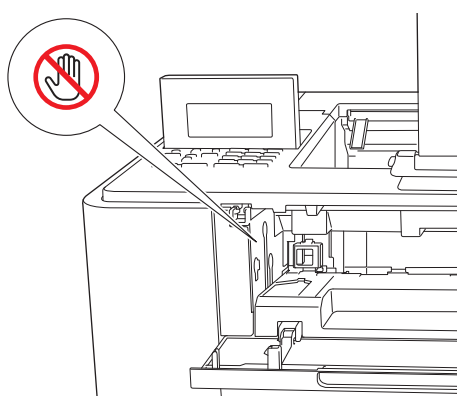
When placing or repositioning your Brother machine on the optional stabilizer, make sure that all four stabilizer support legs are adjusted and rest firmly on the floor. Not adjusting the optional stabilizer support legs may cause the machine to move or fall over, resulting in injury to you.



Be careful not to trip on the legs of the optional Stabilizer unit. Do not stand on the optional Stabilizer unit. The printer and the optional Stabilizer unit may move and cause you to fall.



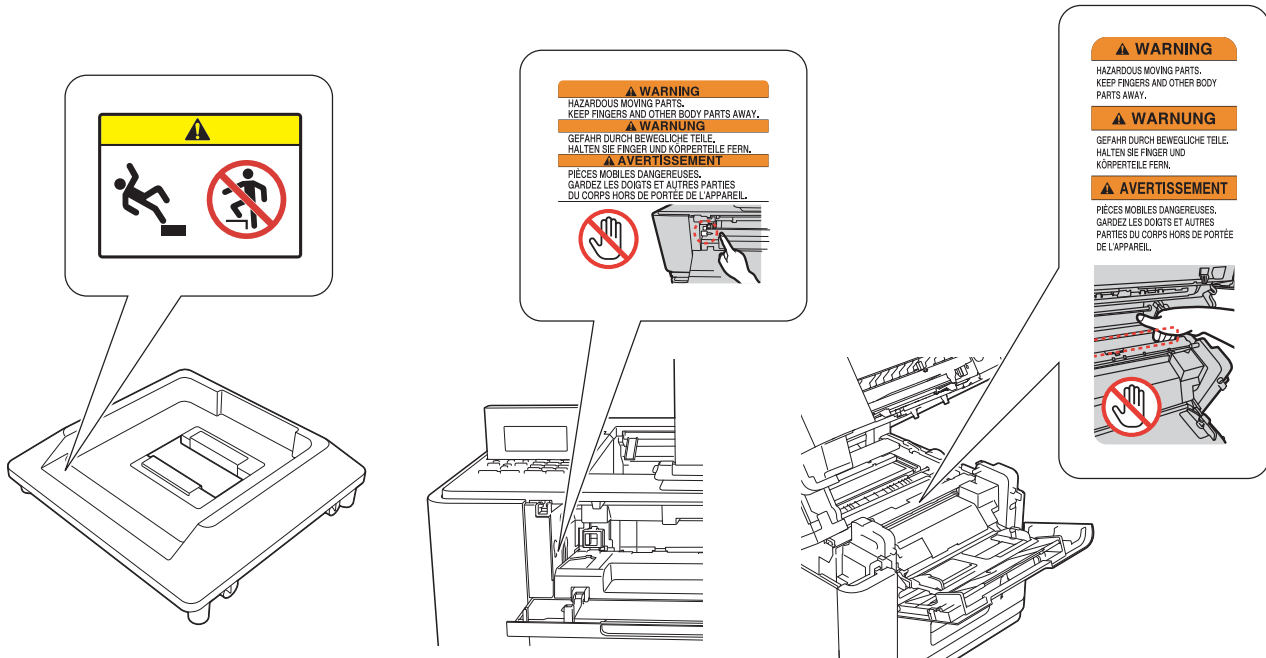
DO NOT touch the hazardous moving parts.
Keep fingers and other body parts away.



DO NOT push the optional output tray from the side after it is installed. The optional output tray may fall and cause injury to you.

! Important

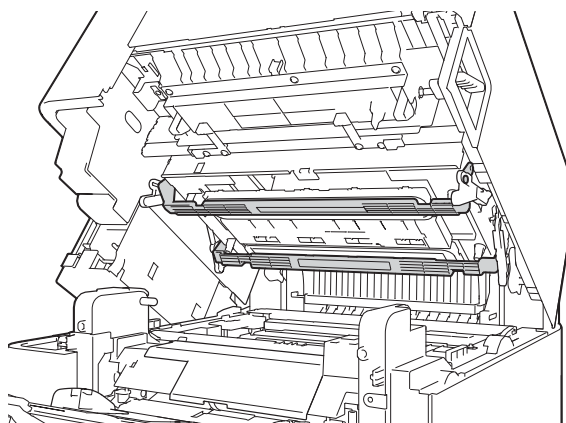
- DO NOT remove or damage any of the caution or warning labels affixed to the product.



- DO NOT remove the serial number and instruction labels that are affixed to the product.

Note

Do not touch the print head, the shaded parts shown in the illustration. If you touch the print head, ink from the print head may stain your skin. If ink stains your skin, wash with soap at once.

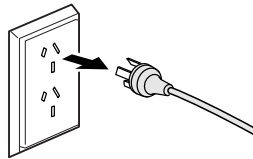


Connecting the product safely

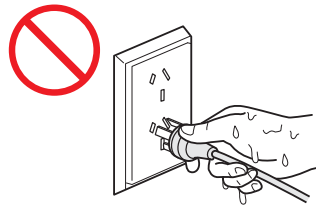
WARNING



There are high voltage electrodes inside the product. Before you clean the inside of the product, make sure you have unplugged the power cord from the electrical socket. Doing this will prevent an electrical shock.



DO NOT handle the plug with wet hands. Doing this might cause an electrical shock.



Always make sure the plug is fully inserted.



This product should be connected to an AC power source within the range indicated on the rating label. DO NOT connect it to a DC power source or inverter. If you are not sure, contact a qualified electrician.



DO NOT allow anything to rest on the power cord. DO NOT place this product where people may step on the cord.



To ensure safe operation, the supplied three-pin plug must be inserted only into a standard three-pin electrical socket that is properly earthed through the standard electrical wiring.



Use only the power cord supplied with this product.



DO NOT place this product in a position where the cord is stretched or strain is otherwise put on the cord. Doing so may cause the cord to become worn or frayed.



Unplug this product from the electrical socket before you move the product.



DO NOT use the product if the power cord is frayed or damaged. Doing so may cause an electrical shock or a fire.



Brother strongly recommends that you DO NOT use any extension cord.

Servicing the product

DO NOT attempt to service this product yourself because opening or removing covers may expose you to dangerous voltage points and other risks and may void your warranty. If you experience any problems with your machine, call your Brother dealer or Brother Customer Service.

WARNING



If the product has been dropped or the casing has been damaged, there may be the possibility of an electric shock. Unplug the product from the electrical socket and call your Brother dealer or Brother Customer Service.

CAUTION

If the product becomes unusually hot, releases smoke, generates any strong smells, or if you accidentally spill any liquid on it, immediately unplug the product from the electrical socket. Call your Brother dealer or Brother Customer Service.

Important

If the product does not operate normally when the operating instructions are followed, adjust only those controls that are covered by the operating instructions. Incorrect adjustment of other controls may result in damage and will often require extensive work by a qualified technician to restore the product to normal operation.

Important Information for Australia

IMPORTANT-For Your Safety

To ensure safe operation the three-pin plug supplied must be inserted only into a standard three-pin power point which is effectively grounded through the normal household wiring.

The fact that the equipment operates satisfactorily does not imply that the power is grounded and that the installation is completely safe. For your safety, if in any doubt about the effective grounding of the power, consult a qualified electrician.

Important Safety Instructions

- 1 This product is equipped with a 3-wire grounded plug, a plug having a third (grounded) pin. This plug will only fit into a grounded power outlet. This is a safety feature. If you are unable to insert the plug into the outlet, call your electrician to replace your obsolete outlet. DO NOT defeat the purpose of the grounded plug.
- 2 DO NOT place anything on top of the power cord including this product. DO NOT allow the power cord to be stepped on.
- 3 DO NOT touch a document during printing.
- 4 Never push objects of any kind into this product through cabinet slots, since they may touch dangerous voltage points or short out parts resulting in a risk of fire or electric shock. Never spill liquid of any kind on the product.
- 5 Unplug this product from the wall outlet and refer servicing to Authorised Service Personnel under the following conditions:
 - When the power cord is damaged or frayed.
 - If liquid has been spilled into the product.
 - If the product has been exposed to rain or water.
 - If the product does not operate normally when the operating instructions are followed. Adjust only those controls that are covered by the operating instructions. Incorrect adjustment of other controls may result in damage and will often require extensive work by a qualified technician to restore the product to normal operation.
 - If the product has been dropped or the casing has been damaged.
 - If the product exhibits a distinct change in performance, indicating a need for service.

Important Information for New Zealand

IMPORTANT-For Your Safety

To ensure safe operation the three-pin plug supplied must be inserted only into a standard three-pin power point which is effectively grounded through the normal household wiring.

The fact that the equipment operates satisfactorily does not imply that the power is grounded and that the installation is completely safe. For your safety, if in any doubt about the effective grounding of the power, consult a qualified electrician.

Important Safety instructions

- 1 This product is equipped with a 3-wire earthed plug. This plug will fit into only an earthed socket. This is a safety feature. If you are unable to insert the plug into the outlet, contact your electrician to replace your obsolete socket. DO NOT defeat the purpose of an earthed plug.
- 2 DO NOT place anything on top of the power cord including this product. DO NOT allow the power cord to be stepped on.
- 3 DO NOT touch a document during printing.
- 4 Never push objects of any kind into this product through cabinet slots, since they may touch dangerous voltage points or short out parts resulting in a risk of fire or electric shock. Never spill liquid of any kind on the product.
- 5 Unplug this product from the mains power, and refer servicing to qualified Service Personnel under the following conditions:
 - If the power cord is damaged or frayed.
 - If liquid has been spilled into the product.
 - If the product has been exposed to rain or water.
 - If the product does not operate normally when the operating instructions are followed. Adjust only those controls that are covered by the operating instructions. Incorrect adjustment of other controls may result in damage and will often require extensive work by a qualified technician to restore the product to normal operation.
 - If the product has been dropped or the casing has been damaged.
 - If the product exhibits a distinct change in performance, indicating a need for service.

Product Warranty & Liability

Brother shall not be liable for any loss or damage that may arise from the use of the information contained herein (including, without limitation, any direct, special or consequential damages). Nothing in this guide shall affect any existing product warranty or be construed as granting any additional product warranty. Failure to follow the safety instructions in this guide may invalidate your product's warranty.

Disconnect device

CAUTION

This product must be installed near an electrical socket that is easily accessible. In case of emergencies, you must disconnect the power cord from the electrical socket to shut off power completely.

LAN connection

CAUTION

DO NOT connect this product to a LAN connection that is subject to over-voltages.

Radio interference

This product complies with EN55022 (CISPR Publication 22)/Class A.

LED radiation

LEDs under the output stopper are certified as Exempt Group as defined in IEC62471:2006.

International ENERGY STAR® Qualification Statement

The purpose of the International ENERGY STAR® Program is to promote the development and popularization of energy-efficient office equipment.

As an ENERGY STAR® Partner, Brother Industries, Ltd. has determined that this product meets the ENERGY STAR® specifications for energy efficiency.



Trademarks

The Brother logo is a registered trademark of Brother Industries, Ltd.

Microsoft, Windows, Windows Server and Internet Explorer are either registered trademarks or trademarks of Microsoft Corporation in the United States and/or other countries.

Windows Vista is either a registered trademark or trademark of Microsoft Corporation in the United States and/or other countries.

Apple, Macintosh, Safari and Mac OS are trademarks of Apple Inc., registered in the U.S. and other countries.

Linux is the registered trademark of Linus Torvalds in the U.S. and other countries.

AMD is a trademark of Advanced Micro Devices, Inc.

Adobe, PostScript and PostScript 3 are either registered trademarks or trademarks of Adobe Systems Incorporated in the United States and/or other countries.

Wi-Fi Protected Setup, WPA, WPA2, and Wi-Fi Protected Access are marks of the Wi-Fi Alliance.

Wi-Fi and Wi-Fi Alliance are registered marks of the Wi-Fi Alliance.

AOSS is a trademark of Buffalo Inc.

Each company whose software title is mentioned in this manual has a Software License Agreement specific to its proprietary programs.

Any trade names and product names of companies appearing on Brother products, related documents and any other materials are all trademarks or registered trademarks of those respective companies.

Open Source Licensing Remarks

Please visit Brother Solutions Center at <http://solutions.brother.com/> to view Open Source Licensing Remarks and Copyright information.

Copyright and License

©2012 Brother Industries, Ltd. All rights reserved.

This product includes software developed by the following vendors:

©1983-1998 PACIFIC SOFTWARES, INC. ALL RIGHTS RESERVED.

©2008 Devicescape Software, Inc. All rights reserved.

This product includes the “KASAGO TCP/IP” software developed by ZUKEN ELMIC, Inc.

Other Information

FlashFX[®] is a registered trademark of Datalight, Inc.

FlashFX[®] Copyright 1998-2010 Datalight, Inc.

U.S. Patent Office 5,860,082/6,260,156

FlashFX[®] Pro[™] is a trademark of Datalight, Inc.

Reliance[™] is a trademark of Datalight, Inc.

Datalight[®] is a registered trademark of Datalight, Inc.

Copyright 1989-2010 Datalight, Inc., All Rights Reserved

brother®



www.brotherearth.com