

Using Web Services for scanning on your network (Windows Vista® SP2 or greater, Windows® 7 and Windows® 8)

The Web Services protocol allows Windows Vista® (SP2 or greater), Windows® 7 and Windows® 8 users to install the scanner driver via Web Services.

NOTE

- For network scanning, a maximum of 20 clients can be connected to one machine on the network. For example, if 30 clients try to connect at a time, 10 of those clients will not be shown on the LCD.
- 20 clients can be added to the list shown on the LCD. If 20 clients are already shown in the list, you can add additional clients by first uninstalling Web Services from one or more of the clients shown on the LCD, installing Web Services on the computer corresponding to the client that you want to add, and then turning the Brother machine off and then on.
- If your computer is protected by a firewall and is unable to network scan, you may need to configure the firewall settings.
- You can scan multiple documents from the ADF (automatic document feeder). When using the ADF, you should choose **Feeder (Scan one side)** from the Source drop-down list in the Scan dialog box.

Installing drivers

NOTE

You must configure the IP address on your machine before you configure this setting.

1 (Windows Vista®)

Click  > **Network**.

(Windows® 7)

Click  > **Control Panel > Network and Internet > View network computers and devices**.

(Windows® 8)

Move your mouse to the lower right corner of your desktop. When the menu bar appears, click **Settings**, click **Change PC settings**, and then click **Devices**.

2 (Windows Vista® and Windows® 7)

The machine's Web Services Name will be shown with the printer icon. Right-click the machine you want to install.

(Windows® 8)

Click **Add a device**. The machine's Web Service Name appears.

NOTE

- The Web Services Name for the Brother machine is your model name and the MAC Address (Ethernet Address) of your machine (e.g. Brother MFC-XXXX (model name) [XXXXXXXXXXXX] (MAC Address / Ethernet Address)).

- (Windows® 8)

Move your mouse over the machine name to display the machine's information.

- 3 (Windows Vista® and Windows® 7)
In the machine's drop-down menu, select **Install**.
- (Windows® 8)
Click the machine you want to install.

NOTE

If the **User Account Control** screen appears, click **Continue**.

Using Web Services for scanning on your network from a computer

Scanning using the Web Services protocol is also available from your computer. You can use Windows® Photo Gallery and Windows® Fax and Scan.

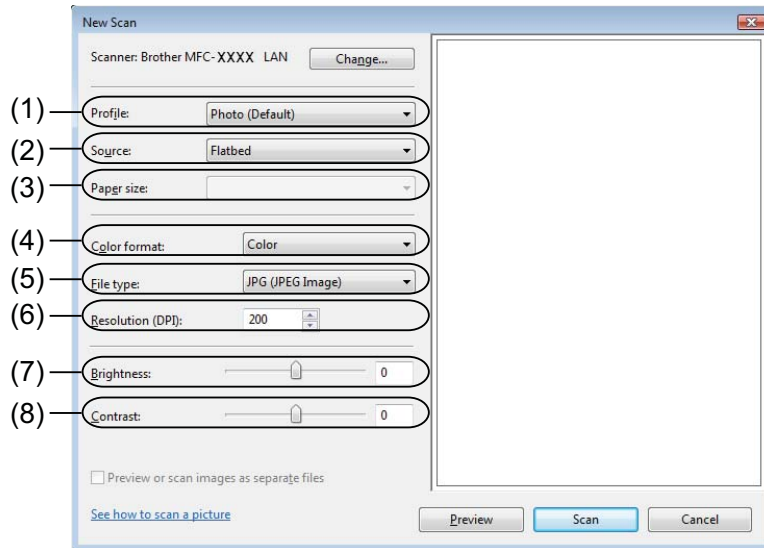
NOTE

- If the LCD shows *Out of Memory*, decrease the **Paper size** setting or the **Resolution (DPI)** setting.
 - Certain characters in the messages displayed on the LCD may be replaced with spaces when the language settings of your OS and your Brother machine are different.
-

If you want to scan and then crop a portion of a page after pre-scanning the document, you must use the scanner glass (see *Pre-Scanning and cropping a portion of the image using the scanner glass* on page 3).

- 1 Load your document.
- 2 Open your software application to scan the document.
- 3 Do one of the following:
 - (Windows® Photo Gallery)
On the **File** menu, click **Import from Camera or Scanner** or **Import photos and videos**.
 - (Windows® Fax and Scan)
On the **File** menu, click **New**, and then click **Scan**.
- 4 Select the scanner you want to use.
- 5 Click **Import** or **OK**.
The Scan dialog box appears.
- 6 Adjust the following settings, if needed.
Make sure the scanner selected in **Scanner** is a Brother machine that supports Web Services for scanning.
 - **Profile** (1)
 - **Source** (2)

- Paper size (3)
- Color format (4)
- File type (5)
- Resolution (DPI) (6)
- Brightness (7)
- Contrast (8)



- 7 Click **Scan**.
The machine starts scanning the document.

Pre-Scanning and cropping a portion of the image using the scanner glass

The **Preview** button is used to preview an image for cropping any unwanted portions from the image. When you are satisfied with the preview, click the **Scan** button in the Scan dialog box to scan the image.

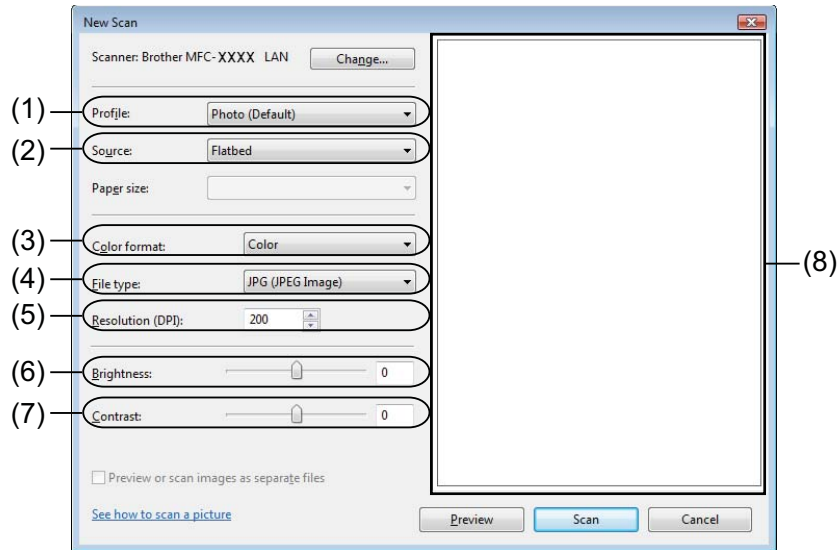
- 1 Follow steps 1 - 5 of *Using Web Services for scanning on your network from a computer* on page 2.

NOTE

Place the document face down on the scanner glass.

- 2 Click the **Source** drop-down list, and then select **Flatbed**.
Adjust the following settings, if needed.
 - Profile (1)
 - Source (2)
 - Color format (3)
 - File type (4)
 - Resolution (DPI) (5)

- **Brightness** (6)
- **Contrast** (7)
- **Scanning area** (8)



- 3 Click **Preview**.
The whole image is scanned into the PC and appears in the scanning area (8).
- 4 Click and drag any corner square, or the horizontal and vertical dotted lines to change the size of the scanning area.
Click and drag inside the scan area to move the scanning area.




- 5 Click **Scan**.
The machine starts scanning the document.
The selected area of the document appears in your application window.

Using Web Services from the Brother machine

The menu that allows you to use Web Services for scanning is displayed on your Brother machine's LCD if you have installed the driver for scanning via Web Services.



NOTE

- If the LCD shows `Out of Memory`, decrease the **Paper size** setting or the **Resolution (DPI)** setting.
 - Certain characters in the messages displayed on the LCD may be replaced with spaces when the language settings of your OS and your Brother machine are different.
-

- 1 Load your document.
- 2 Press  (**SCAN**).
- 3 Press **▲** or **▼** to choose `Web Service`.
Press **OK**.
- 4 Press **▲** or **▼** to choose the type of scan you want to do.
Press **OK**.
- 5 Press **▲** or **▼** to choose the destination computer you want to send to.
Press **OK**.
- 6 Press **Start**.
The machine starts the scanning process.

Configuring scan settings for Web Services

If the LCD shows `Out of Memory`, decrease the **Paper size** setting or the **Resolution (DPI)** setting.

- 1 (Windows Vista®)
Click  > **Control Panel**. Click **Hardware and Sound**, and then click **Scanners and Cameras**.
(Windows® 7)
Click  > **Devices and Printers**.
(Windows® 8)
Move your mouse to the lower right corner of your desktop. When the menu bar appears, click **Settings**, and then click **Control Panel**. In the **Hardware and Sound** group, click **View devices and printers**.
- 2 (Windows Vista®)
Click your machine, and then click the **Scan Profiles** button.
The **Scan Profiles** dialog box appears.
(Windows® 7 and Windows® 8)
Right-click on the machine icon, and then select **Scan profiles...**.
The **Scan Profiles** dialog box appears.

- 3 Choose the scan profile you want to use. Make sure the device selected in **Scanner** is a Brother machine that supports Web Services for scanning.
- 4 Click **Set as Default**.
- 5 Click **Edit...** The **Edit Default Profile** dialog box appears.
- 6 Choose the **Source**, **Paper size**, **Color format**, **File type**, **Resolution (DPI)**, **Brightness** and **Contrast** settings.
- 7 Click **Save Profile**. The settings will be applied when scanning using the Web Services protocol.

NOTE

If you are asked to choose a scanning application, select Windows® Fax and Scan or Windows® Photo Gallery from the list.
