



Brother Industries, Ltd.  
15-1, Naeshiro-cho, Mizuho-ku, Nagoya 467-8561, Japan

Thank you for choosing Brother. Your support is important to us and we value your business. Your Brother product is engineered and manufactured to the highest standards to deliver reliable performance, day-in and day-out.

**Please read the Product Safety Guide on page 20 before you set up your machine.** Then, please return to this page of the Quick Setup Guide for the correct setup and installation procedure.

 <b>WARNING</b>	<b>WARNING</b> indicates a potentially hazardous situation which, if not avoided, could result in death or serious injuries.
 <b>CAUTION</b>	<b>CAUTION</b> indicates a potentially hazardous situation which, if not avoided, may result in minor or moderate injuries.
<b>IMPORTANT</b>	<b>IMPORTANT</b> indicates a potentially hazardous situation which, if not avoided, may result in damage to property or loss of product functionality.
<b>NOTE</b>	Notes tell you how you should respond to a situation that may arise or give tips about how the operation works with other features.

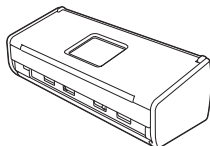
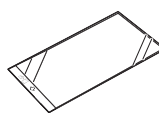

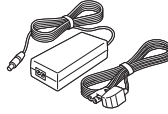
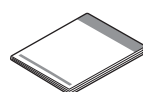

## NOTE

Unless otherwise specified, illustrations in this guide show the ADS-1600W.

# 1

## Unpack the machine and check the components

■ The components included in the box may differ depending on your country.

	 Receipt Carrier Sheet	 USB Interface Cable
 AC adapter	 Quick Setup Guide	 DVD-ROM

You can download the *User's Guide* and *Network User's Guide* for your model from the Brother Solutions Center at [support.brother.com](http://support.brother.com). If your computer does not have a DVD-ROM drive, the supplied DVD-ROM does not contain drivers for your operating system, or you want to download manuals and utilities, visit your model page at [support.brother.com](http://support.brother.com). Some software applications included on the DVD-ROM may not be available as a download.

## WARNING

- This product was packaged in a plastic bag. To avoid suffocation, keep plastic bags away from babies and children. Do not use the bag in cribs, beds, carriages or play pens. The bag is not a toy.
- Use only the AC adapter supplied with this product.

## NOTE

- We recommend that you save the original packaging in case you must ship your machine.
- Please use the supplied USB cable if you want to connect the machine to a computer.

**a** Remove the protective tape and film covering the machine and the LCD or Control Panel.

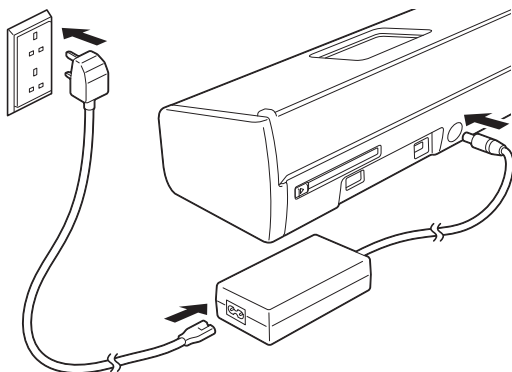
**b** Make sure you have all the components.

## 2 Connect the AC adapter

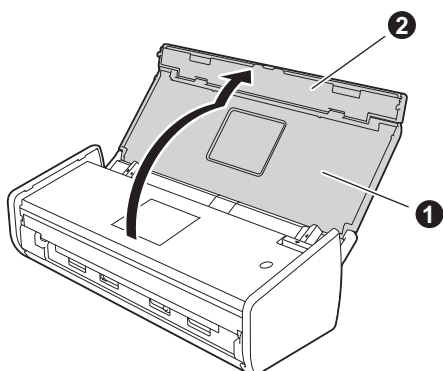
### NOTE

DO NOT connect the USB cable yet.

- a** Connect the AC adapter.



- b** Open the Top Cover ① and push the flap of the Top Cover ② firmly back until it clicks.



# 3

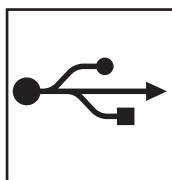
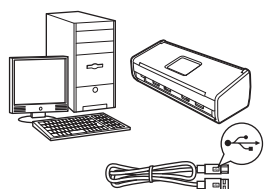
## Choose your connection type

These installation instructions are for Windows® XP Home, XP Professional, Windows Vista®, Windows® 7, Windows® 8, and Mac OS X v10.6.8, 10.7.x and 10.8.x.

If your computer does not have a DVD-ROM drive, the supplied DVD-ROM does not contain drivers for your operating system, or you want to download manuals and utilities, visit your model page at [support.brother.com](http://support.brother.com). Some software applications included on the DVD-ROM may not be available as a download.

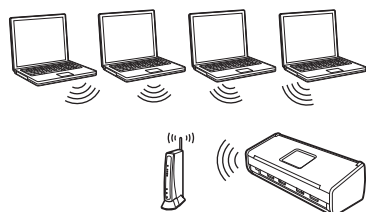
### NOTE

Windows® 8 users: If the Brother manuals are in PDF format, use Adobe® Reader® to open them. If Adobe® Reader® is installed on your computer but you cannot open the files in Adobe® Reader®, change the file association for PDF (see *How to open a PDF file in Adobe® Reader® (Windows® 8)* on page 19).



### For USB interface cable

Windows®, go to page 4  
Macintosh, go to page 6



### For Wireless Network

Windows® and Macintosh,  
go to page 7



## For Windows® USB interface users

(Windows® XP Home/XP Professional/Windows Vista®/Windows® 7/Windows® 8)

### 4

## Before you install

Make sure that your computer and machine are ON.

### NOTE


- DO NOT connect the USB cable yet.
- If there are any programs running, close them.
- The screens may differ depending on your operating system.
- The DVD-ROM includes Nuance™ PaperPort™ 12SE. This software supports Windows® XP Home (SP3 or greater), XP Professional (SP3 or greater), Windows Vista® (SP2 or greater), Windows® 7 and Windows® 8. Update to the latest Windows® Service Pack before installing MFL-Pro Suite.

### 5

## Install MFL-Pro Suite

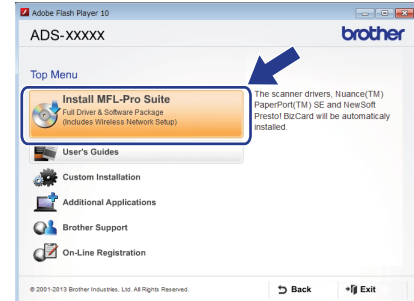
- a** Put the DVD-ROM into your DVD-ROM drive. If the model name screen appears, choose your machine. If the language screen appears, choose your language.

### NOTE

- If the Brother screen does not appear automatically, go to **Computer (My Computer)**. (For Windows® 8: click the  (**File Explorer**) icon on the taskbar, and then go to **Computer**.)
- Double-click the DVD-ROM icon, and then double-click **start.exe**.

### b

Click **Install MFL-Pro Suite**, and then click **Yes** if you accept the license agreements.



### NOTE

For Windows Vista®, Windows® 7 and Windows® 8, when the User Account Control screen appears, click **Allow** or **Yes**.

### c

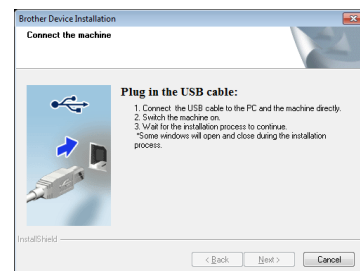
Choose **Local Connection (USB)**, and then click **Next**.

### NOTE

If the **Windows Security** screen appears, select the check box and click **Install** to complete the installation correctly.

### d


Follow the on-screen instructions.

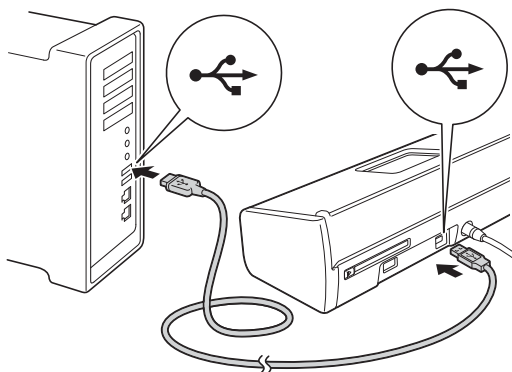




## 6

## Connect the USB cable

- a** Connect the USB cable to the USB port marked with a  symbol on the back of your machine. Connect the other end of the cable to your computer.



- b** The installation will continue automatically. The installation screens appear one after another.

**NOTE**

DO NOT cancel any of the screens during the installation. It may take a few seconds for all screens to appear.



- c** When the **On-Line Registration** screen is displayed, make your selection and follow the on-screen instructions.

## 7

## Finish and restart

- a** Click **Finish** to restart your computer.

**NOTE**

- If an error message appears during the software installation, do one of the following:
  - Windows® XP, Windows Vista® and Windows® 7 users: Run the **Installation Diagnostics** located in  (**Start**) > **All Programs** > **Brother** > **ADS-XXXXX** (where XXXXX is your model name).
  - Windows® 8 users: To run the **Installation Diagnostics**, double-click  (**Brother Utilities**) on the desktop, and then click the drop-down list and select your model name (if not already selected). Click **Tools** in the left navigation bar.
- Depending on your security settings, a Windows® Security or antivirus software window may appear when using the machine or its software. Please allow or permit the window to continue.

- b** The following screens will appear:

- When the **Software Update Setting** screen appears, choose the software update setting you want and click **OK**.
- When the Brother Product Research and Support Program screen appears, select your preference and follow the on-screen instructions.

**NOTE**

Internet access is required for the software update and the Brother Product Research and Support Program.

**Finish**

The installation is now complete and it is time to do a test scan. See **Test Scan (scan to PDF)** on page 18.

To install optional applications:

Now go to

Page 16



## For Macintosh USB interface users

(Mac OS X v10.6.8/10.7.x/10.8.x)

### 4

#### Before you install

Make sure your machine is connected to the power and your Macintosh is ON.

#### NOTE


For Mac OS X v10.6.0 to 10.6.7 users, upgrade to Mac OS X v10.6.8 - 10.8.x.

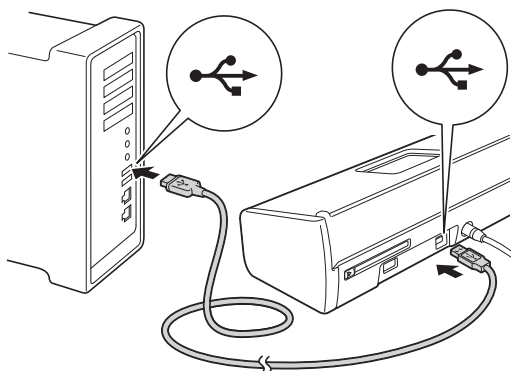
### 5

#### Connect the USB cable

#### NOTE

- DO NOT connect the machine to a USB port on a keyboard or a non-powered USB hub.
- Connect the machine directly to your Macintosh.

- a** Connect the USB cable to the USB port marked with a  symbol on the back of your machine. Connect the other end of the cable to your computer.



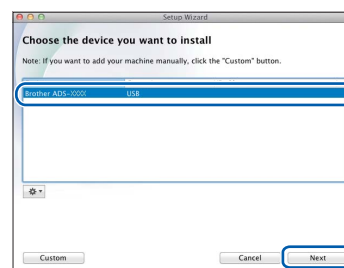
### 6

#### Install MFL-Pro Suite

- a** Put the installer DVD-ROM into your DVD-ROM drive.
- b** Double-click the **Start Here OSX** icon to install. If the model name screen appears, choose your machine.



- c** Choose **Local Connection (USB)**, and then click **Next**. Follow the on-screen instructions.
- d** After the installation, the Brother software will search for the Brother device. This will take a few moments to complete.
- e** Choose your machine from the list, and then click **Next**.



### Finish

The installation is now complete and it is time to do a test scan. See **Test Scan (scan to PDF)** on page 18.

To install optional applications:

Now go to

Page 17



## For wireless network interface users

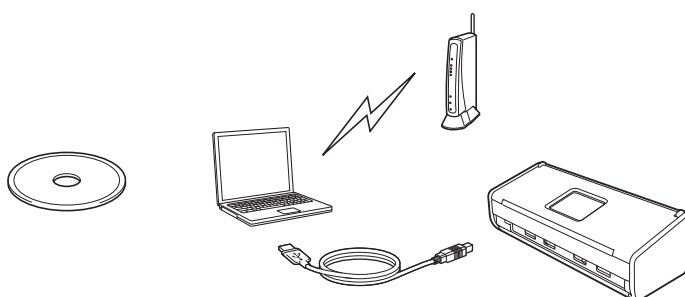
### 4

## Choose your wireless setup method

The following instructions will offer two methods for setting up your Brother machine on a wireless network. If you want to scan using your mobile devices only and your wireless access point/router supports automatic wireless (one-push) setup (WPS or AOSS™), select method **b**. Otherwise, select method **a**.

### **a** Setup using the DVD-ROM and a USB cable (Windows® & Macintosh)

- We recommend using a computer wirelessly connected to your network for this method.
- You will need to use a USB cable temporarily during configuration.

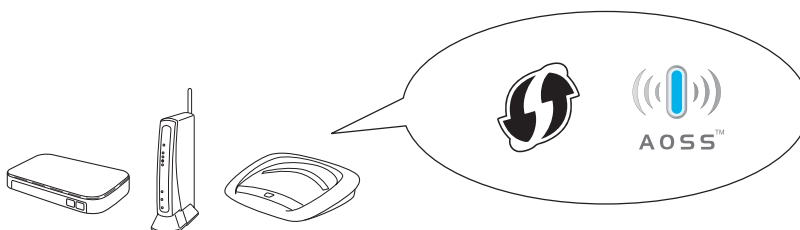


Now go to

page 8

### **b** One-push setup using WPS or AOSS™ (mobile devices)

- Use this method if your wireless access point/router supports automatic wireless (one-push) setup (WPS or AOSS™).
- If you want to scan using your computer, use method **a**.



Now go to

page 11



# For Wireless Network Users

## 5

## Setup using the DVD-ROM and USB cable (Windows® & Macintosh)


### For Macintosh Users:

For Macintosh installation, insert the DVD-ROM into your DVD-ROM drive and double-click **Start Here OSX**. Select **Wireless installation** and follow the **Wireless Device Setup** instructions on your computer screen.

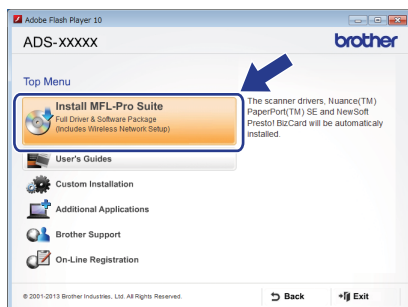
### For Windows® Users:

- a** Put the DVD-ROM into your DVD-ROM drive. If the model name screen appears, choose your machine. If the language screen appears, choose your language.

### NOTE

- If the Brother screen does not appear automatically, go to **Computer (My Computer)**. (For Windows® 8: click the  (**File Explorer**) icon on the taskbar, and then go to **Computer**.)
- Double-click the DVD-ROM icon, and then double-click **start.exe**.

- b** Click **Install MFL-Pro Suite** and click **Yes** if you accept the license agreements.

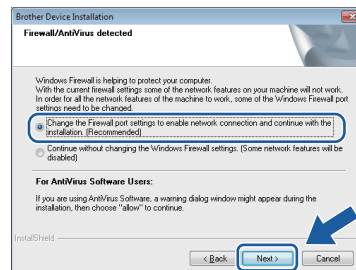


### NOTE

- For Windows Vista®, Windows® 7 and Windows® 8, when the User Account Control screen appears, click **Allow** or **Yes**.
- Click **Yes** if you accept the license agreements.

- c** Choose **Wireless Network Connection**, and then click **Next**.

- d** When the **Firewall/AntiVirus detected** screen appears, choose **Change the Firewall port settings to enable network connection and continue with the installation**. (**Recommended**) and click **Next**.



- e** Follow the on-screen instructions to set up the Brother machine.

- f** Your machine will now try to connect to your wireless network. It may take a few minutes.

**OK!** **Wireless setup is now complete.**  
The **Wi-Fi light**  on the **Control Panel** lights up, indicating that the machine's **Network I/F is set to WLAN**.

## To install MFL-Pro Suite

### For Windows® users:

**Now go to**

**Step g on page 9**

### For Macintosh users:

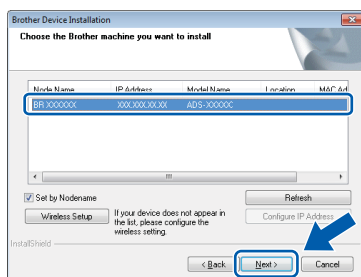
**Now go to**

**Step g on page 10**






- g** Choose your machine from the list, and then click **Next**.



## NOTE

- If your machine is not found over the network, confirm your settings by following the on-screen instructions.
- If you are using WEP and the WiFi light  on the Control Panel lights up (for ADS-1100W), or the LCD displays *Connected* (for ADS-1600W) but your machine is not found on the network, make sure you entered the WEP key correctly. The WEP key is case-sensitive.

- h** The installation of the Brother drivers will automatically start. The installation screens appear one after another.

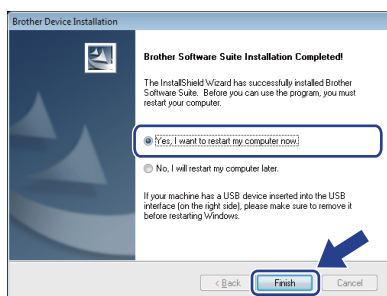
## NOTE

- DO NOT cancel any of the screens during the installation. It may take a few seconds for all screens to appear.
- If the **Windows Security** screen appears, select the check box and click **Install** to complete the installation correctly.

- i** When the **On-Line Registration** screen is displayed, make your selection and follow the on-screen instructions.



## 6 Finish and restart

- a** Click **Finish** to restart your computer.



## NOTE




If an error message appears during the software installation, do one of the following:

- Windows® XP, Windows Vista® and Windows® 7 users: Run the **Installation Diagnostics** located in  (**Start**) > **All Programs** > **Brother** > **ADS-XXXXX** (where XXXXX is your model name).
- Windows® 8 users: To run the **Installation Diagnostics**, double-click  (**Brother Utilities**) on the desktop, and then click the drop-down list and select your model name (if not already selected). Click **Tools** in the left navigation bar.

- b** The following screens will appear:

- When the **Software Update Setting** screen appears, choose the software update setting you want and click **OK**.
- When the Brother Product Research and Support Program starts up, follow the on-screen instructions.

## NOTE

- Internet access is required for the software update and the Brother Product Research and Support Program.
- When you install MFL-Pro Suite, Brother Help will also be installed automatically. Launch Brother Help  by clicking  in the system tray. Click  to access the Brother Solutions Center.

## Finish

The installation is now complete and it is time to do a test scan. See **Test Scan (scan to PDF)** on page 18.

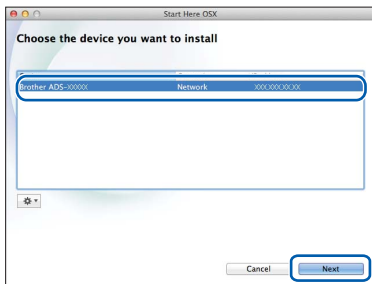
To install optional applications:

Now go to

Page 16



- g** Choose your machine from the list, and then click **Next**.



## NOTE

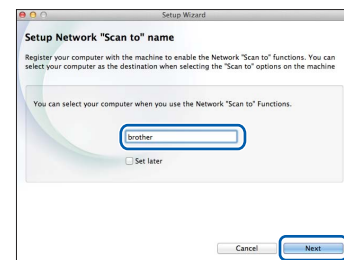
If your wireless settings fail, the **Wireless Device Setup Wizard** screen appears. Follow the on-screen instructions to complete the wireless configuration.



- h** The installation of the Brother drivers will automatically start. Please wait for the software to install.

## NOTE

- (ADS-1100W)  
You can find your machine's MAC Address (Ethernet Address) in **Network Status** from the **Network** tab, and IP address in **TCP/IP (Wireless)** in **Wireless** from the **Network** tab, in Web Based Management. See the *Network User's Guide*.  
(ADS-1600W)  
You can display your machine's MAC Address (Ethernet Address) and IP Address using the machine's LCD. To find the MAC Address, press (Settings) > Network > WLAN > MAC Address. To find the IP Address, press (Settings) > Network > WLAN > TCP/IP > IP Address.
- If the **Setup Network "Scan to" name** screen appears, type a name for your Macintosh (up to 15 characters), and then click **Next**.



The name you type will appear in the **Destination** drop-down list in **Scan to Network Device** from the **Scan** tab in Web Based Management (ADS-1100W only) (see the *User's Guide*) or on the LCD of the machine (ADS-1600W only) when you choose a scan option. For more information, see the *User's Guide*.

## Finish

The installation is now complete and it is time to do a test scan. See **Test Scan (scan to PDF)** on page 18.

To install optional applications:

Now go to

Page 17



## 5

### One-push setup using WPS or AOSS™ (mobile devices)

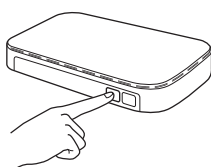
#### (ADS-1100W)

- a** Confirm that your wireless access point/router has the WPS or AOSS™ symbol as shown below.

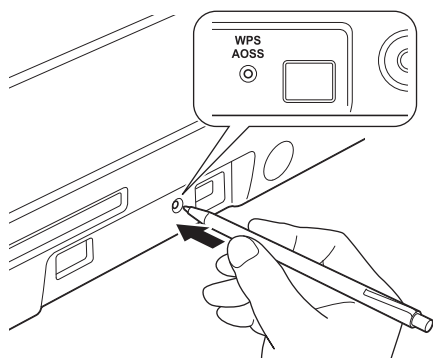


- b** Place the Brother machine within range of your WPS or AOSS™ access point/router. The range may differ depending on your environment. Refer to the instructions provided with your access point/router.

- c** Press the WPS or AOSS™ button on your wireless access point/router (for more information, see the instructions provided with your wireless access point/router).




- d** Using a small, pointed object, press the AOSS/WPS button on the back of the machine for less than two seconds.



#### NOTE

- If you do not press the AOSS/WPS button on the back of the machine soon after pressing the WPS or AOSS™ button on your wireless access point/router, the connection may fail.
- If your wireless access point/router supports WPS and you want to configure your machine using the PIN (Personal Identification Number) Method, see *Configuration using the PIN Method of WPS (Wi-Fi Protected Setup)* in the *Network User's Guide*.

- e** This feature will automatically detect which mode (WPS or AOSS™) your wireless access point/router uses, and try to connect to your wireless network.

- f** If your wireless device is connected successfully, the Wi-Fi light  on the Control Panel will light up. If the connection failed, the LEDs blink to indicate an error status. Make a note of the error status, see *Troubleshooting* on page 13, and then correct the error.



**Wireless setup is now complete.**

**The Wi-Fi light  on the Control Panel lights up, indicating that the machine's Network I/F is set to WLAN.**

#### NOTE

- Connect your mobile device to a wireless access point/router using a Wi-Fi connection.
- Download and install Brother iPrint&Scan (Android™/iOS/Windows® Phone) from your mobile device's application download site.
- To download the User's Guide for the application you are using (Brother iPrint&Scan), visit the Brother Solutions Center at [support.brother.com](http://support.brother.com) and click Manuals on your model's page.



# For Wireless Network Users

## (ADS-1600W)

- a** Confirm that your wireless access point/router has the WPS or AOSS™ symbol as shown below.



- b** Place the Brother machine within range of your WPS or AOSS™ access point/router. The range may differ depending on your environment. Refer to the instructions provided with your access point/router.

- c** On the machine's Control Panel, press  (Settings) > Network > WLAN > WPS/AOSS.

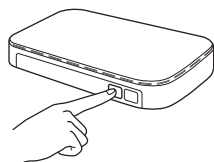
When `Enable WLAN?` is displayed, press `Yes` to accept.

### NOTE

- If you do not start WPS/AOSS from the machine's Control Panel soon after pressing the WPS or AOSS™ button on your wireless access point/router, the connection may fail.
- If your wireless access point/router supports WPS and you want to configure your machine using the PIN (Personal Identification Number) Method, see *Configuration using the PIN Method of WPS (Wi-Fi Protected Setup)* in the *Network User's Guide*.

- d** When the LCD instructs you to start WPS or AOSS™, press the WPS or AOSS™ button on your wireless access point/router (for more information, see the instructions provided with your wireless access point/router).

Press `OK` on your machine.



- e** This feature will automatically detect which mode (WPS or AOSS™) your wireless access point/router uses and try to connect to your wireless network.

## f

If your wireless device is connected successfully, the LCD will display the message `Connected` until you press `OK`.  
If the connection failed, the LCD will display an error code. Make a note of the error code, see *Troubleshooting* on page 13, and then correct the error.



**Wireless setup is now complete.**

The Wi-Fi light  on the Control Panel lights up, indicating that the machine's Network I/F is set to WLAN.

### NOTE

- Connect your mobile device to a wireless access point/router using a Wi-Fi connection.
- Download and install Brother iPrint&Scan (Android™/iOS/Windows® Phone) from your mobile device's application download site.
- To download the User's Guide for the application you are using (Brother iPrint&Scan), visit the Brother Solutions Center at [support.brother.com](http://support.brother.com) and click Manuals on your model's page.



## Troubleshooting

If you need assistance during setup and want to contact Brother Customer Service, make sure you have your SSID (Network Name) and Network Key ready. We cannot assist you in locating this information.

### How can I find the wireless security information (SSID and Network Key\*)



- 1) Check documentation provided with your wireless access point/router.
- 2) The default SSID could be the manufacturer's name or the model name.
- 3) If you do not know the security information, please consult the router manufacturer, your system administrator, or your Internet provider.

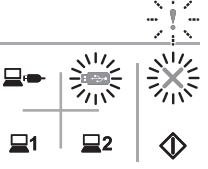
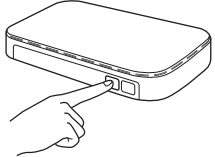
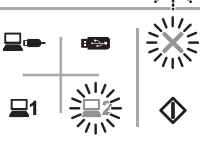
\* The Network Key may also be described as the Password, Security Key, or Encryption Key.

\* If the WLAN access point/router is not broadcasting the SSID, the SSID will not automatically be detected. You will have to manually enter the SSID name. See the *Network User's Guide*.


### Error Status/Error Codes

If the LED indicators (on the ADS-1100W) or the LCD (on the ADS-1600W) indicate an error, locate the error status or code in the following tables, and use the recommended solution to correct the error.

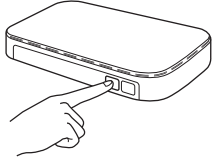
	The LED is on.
	The LED is blinking.

ADS-1100W Error Status	Recommended Solutions
	<p>The machine cannot detect a wireless access point/router that has WPS or AOSS™ enabled.</p> <p>To configure your wireless settings using WPS or AOSS™, you must operate both your machine and the wireless access point/router. Confirm that your wireless access point/router supports WPS or AOSS™, and try restarting from step <b>5</b> on page 11.</p> <p>If you do not know how to operate your wireless access point/router using WPS or AOSS™, see the documentation provided with your wireless access point/router, ask the manufacturer of your wireless access point/router, or ask your network administrator.</p> 
	<p>Two or more wireless access points that have WPS or AOSS™, enabled are detected.</p> <p>Confirm that only one wireless access point/router within range has the WPS or AOSS™ method active and try again.</p> <p>Try restarting from step <b>5</b> on page 11 after a few minutes, in order to avoid interference from other access points.</p>



ADS-1600W Error Code	Recommended Solutions												
TS-01	<p>The wireless setting is not activated.</p> <p>Turn the wireless setting to ON:</p> <ol style="list-style-type: none"> <li>1. On your machine, press  (Settings) &gt; Network &gt; WLAN &gt; Setup Wizard.</li> <li>2. When <b>Enable WLAN?</b> is displayed, press <b>Yes</b>. This will start the wireless setup wizard.</li> </ol>												
TS-02	<p>The wireless access point/router cannot be detected.</p> <ol style="list-style-type: none"> <li>1. Check the following: <ul style="list-style-type: none"> <li>- Make sure that the wireless access point/router is powered on.</li> <li>- Move your machine to an obstruction-free area, or closer to the wireless access point/router.</li> <li>- Temporarily place your machine within about one metre of the wireless access point when you are configuring the wireless settings.</li> <li>- If your wireless access point/router is using MAC address filtering, confirm the MAC address of the Brother machine is allowed in the filter.</li> </ul> </li> <li>2. If you manually entered the SSID and security information (SSID/authentication method/encryption method/Network Key), the information may be incorrect.</li> </ol> <p>Confirm the SSID and security information and re-enter the correct information as necessary. See <i>How can I find the wireless security information (SSID and Network Key*)</i> on page 13.</p>												
TS-03	<p>The wireless network and security setting you entered may be incorrect.</p> <p>Confirm the wireless network settings. See <i>How can I find the wireless security information (SSID and Network Key*)</i> on page 13.</p> <p>Confirm that the entered or selected SSID/authentication method/encryption method/UserID/Userpass are correct.</p>												
TS-04	<p>The Authentication/Encryption methods used by the selected wireless access point/router are not supported by your machine.</p> <p>For infrastructure mode, change the authentication and encryption methods of the wireless access point/router. Your machine supports the following authentication methods:</p> <table border="1"> <thead> <tr> <th>Authentication Method</th><th>Encryption Method</th></tr> </thead> <tbody> <tr> <td rowspan="2">WPA-Personal</td><td>TKIP</td></tr> <tr> <td>AES</td></tr> <tr> <td>WPA2-Personal</td><td>AES</td></tr> <tr> <td rowspan="2">Open</td><td>WEP</td></tr> <tr> <td>None (without encryption)</td></tr> <tr> <td>Shared key</td><td>WEP</td></tr> </tbody> </table> <p>If your problem is not solved, the SSID or network settings you entered may be incorrect. Reconfirm the wireless network settings. See <i>How can I find the wireless security information (SSID and Network Key*)</i> on page 13.</p> <p>For ad-hoc mode, change the authentication and encryption methods of your computer for the wireless setting. Your machine supports Open authentication method only, with optional WEP encryption.</p>	Authentication Method	Encryption Method	WPA-Personal	TKIP	AES	WPA2-Personal	AES	Open	WEP	None (without encryption)	Shared key	WEP
Authentication Method	Encryption Method												
WPA-Personal	TKIP												
	AES												
WPA2-Personal	AES												
Open	WEP												
	None (without encryption)												
Shared key	WEP												



ADS-1600W Error Code	Recommended Solutions
TS-05	<p>The security information (SSID/Network Key) is incorrect.</p> <p>Confirm the SSID and security information (Network Key). See <i>How can I find the wireless security information (SSID and Network Key*)</i> on page 13.</p> <p>If your router uses WEP encryption, enter the key used as the first WEP key. Your Brother machine supports the use of the first WEP key only.</p>
TS-06	<p>The wireless security information (Authentication method/Encryption method/Network Key) is incorrect.</p> <p>Confirm the wireless security information (Authentication method/Encryption method/Network Key) using the Authentication Method table in error TS-04. See <i>How can I find the wireless security information (SSID and Network Key*)</i> on page 13.</p> <p>If your router uses WEP encryption, enter the key used as the first WEP key. Your Brother machine supports the use of the first WEP key only.</p>
TS-07	<p>The machine cannot detect a wireless access point/router that has WPS or AOSS™ enabled.</p> <p>To configure your wireless settings using WPS or AOSS™, you must operate both your machine and the wireless access point/router.</p> <p>Confirm that your wireless access point/router supports WPS or AOSS™, and try restarting from step <b>5</b> on page 11.</p> <p>If you do not know how to operate your wireless access point/router using WPS or AOSS™, see the documentation provided with your wireless access point/router, ask the manufacturer of your wireless access point/router, or ask your network administrator.</p> 
TS-08	<p>Two or more wireless access points that have WPS or AOSS™, enabled are detected.</p> <p>Confirm that only one wireless access point/router within range has the WPS or AOSS™ method active and try again.</p> <p>Try restarting from step <b>5</b> on page 11 after a few minutes, in order to avoid interference from other access points.</p>
TS-20	<p>The machine is still trying to connect to your wireless network. Please wait a few minutes, and then check the WLAN status.</p>



# Install Optional Applications

## 1 Install optional applications (Windows® users)

### BR-Receipts

Brother's BR-Receipts application processes receipts by taking information from your scanned images and categorising it. You can generate reports to view and track categorised expenses. (This application is not available depending on your country.)

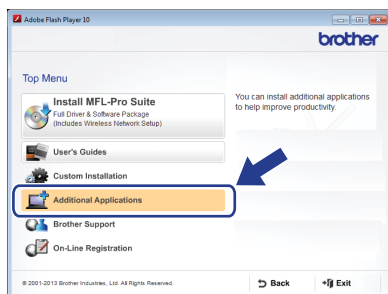
### Nuance PDF Converter Professional 8 (ADS-1600W only)

Nuance PDF Converter Professional 8 offers a variety of features for handling PDF files. It can unlock and open PDF files for viewing, editing, annotation and re-assembly.

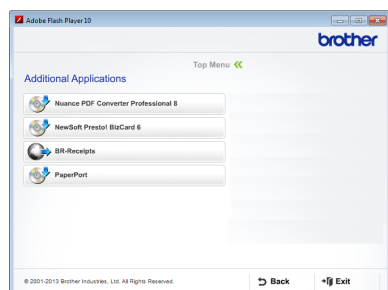
**Enter the Nuance serial number that is shown on the MFL-Pro Suite DVD-ROM sleeve when installing Nuance PDF Converter Professional 8.**

**a** Reinsert the DVD-ROM or double-clicking the **start.exe** program. If the model name screen appears, choose your machine. If the language screen appears, choose your language.

**b** The DVD-ROM **Top Menu** will appear. Click **Additional Applications**.








**c** Click the button for the application you want to install.



**d** Go back to the **Additional Applications** screen to install more applications.  
To exit, click **Exit**.

### NOTE

- To start BR-Receipts, do one of the following:
  - Windows® XP, Windows Vista® and Windows® 7 users: Click  (**Start**) > **All Programs** > **Brother** > **BR-Receipts**.
  - Windows® 8 users: Double-click  (**Brother Utilities**) on the desktop, and then click  (**BR-Receipts**).
- To start Nuance PDF Converter Professional 8, do one of the following:
  - Windows® XP, Windows Vista® and Windows® 7 users: Click  (**Start**) > **All Programs** > **Nuance PDF Converter Professional 8** > **PDF Converter Professional**.
  - Windows® 8 users: Move your mouse to the lower right corner of your desktop. When the menu bar appears, click **Start** and then  (**PDF Converter Professional**).

**Finish**

**The installation is now complete.**



# Install Optional Applications

## 1 Install optional applications (Macintosh users)

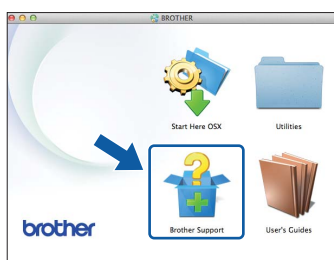
### BR-Receipts

Brother's BR-Receipts application processes receipts by taking information from your scanned images and categorising it. You can generate reports to view and track categorised expenses. (This application is not available depending on your country.)

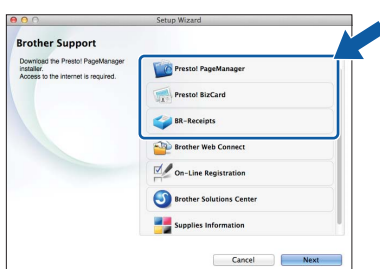
### Presto! PageManager

Presto! PageManager adds Optical Character Recognition (OCR) capability to Brother ControlCenter2. OCR allows you to scan a document and convert its contents to text, so that you can edit the text using the word processing application of your choice. You can scan, share and organise photos and documents using Presto! PageManager.

- a** Double-click the **Brother Support** icon to install. The **Brother Support** window will appear.



- b** Click the button for the application you want to install.



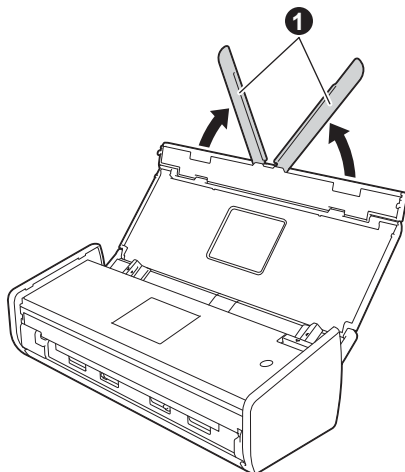
**Finish**

The installation is now complete.

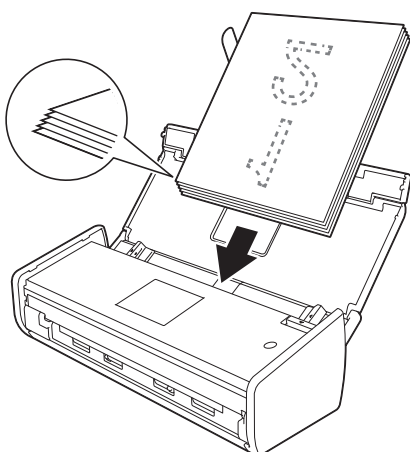
## 1

### Load your document

- a** Lift the Document Support Arms ①.

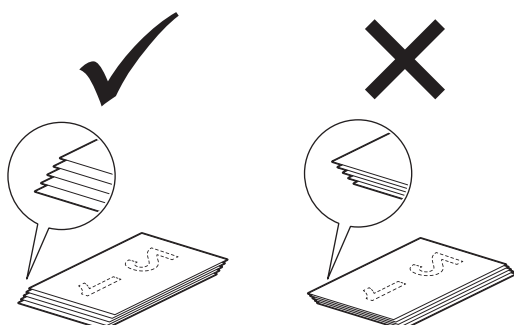


- b** Place your document, face down, top edge first in the document feeder between the Guides until you feel it touch the inside of the machine gently.



### NOTE

When you load multiple documents, position the documents so that the leading edges are aligned at a slight angle in the feed direction.



For Windows® users:

Now go to

Step 2 on page 18


For Macintosh users:

Now go to


Step 2 on page 19




## 2

### Scan using ControlCenter4 (Windows®)

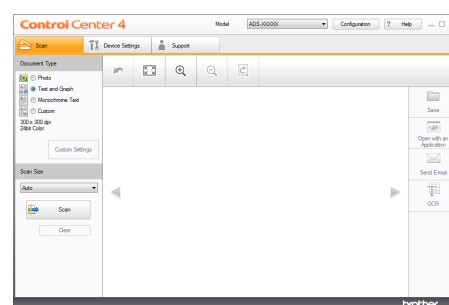
- a** Click the  (ControlCenter4) icon in the system tray, and then select **Open** from the menu.


### NOTE


If the  icon is not displayed in the system tray, do one of the following:

- Windows® XP, Windows Vista® and Windows® 7 users: Click  (**Start**) > **All Programs** > **Brother** > **ADS-XXXXX** > **ControlCenter4** (where XXXXX is your model name).
- Windows® 8 users: Double-click  (**Brother Utilities**) on the desktop, and then click  (**ControlCenter4**).

- b** Select **Home Mode** in the mode dialog box. The **ControlCenter4** window appears.



- c** Click  (**Scan**). The machine starts to feed and scan your document.

- d** Click  (**Save**). The **Save** dialog box appears.

# Test Scan (scan to PDF)

- e** Click **OK**. The scanned data is saved in PDF format.

**Finish**

**The test scan is now complete.**

## NOTE

(ADS-1100W only)

If you set up the machine using a Wireless Network connection and want to try scanning using Scan to FTP, Scan to PC (Network Connect) or WS Scan, see the *User's Guide* to configure the settings for scanning from the Control Panel of the machine.




## How to open a PDF file in Adobe® Reader® (Windows® 8)

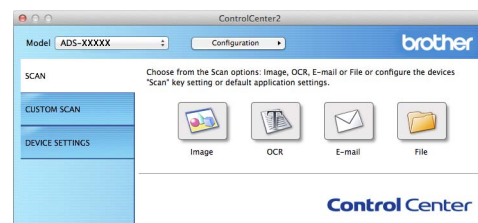
- a** Move your mouse to the lower right corner of your desktop. When the menu bar appears, type "Control Panel" in the search box, and then press the Enter key. The **Control Panel** window will be displayed.
- b** Click **Programs**, click **Default Programs**, and then click **Associate a file type or protocol with a program**.
- c** Select **.pdf**, and then click the **Change program...** button.
- d** Click **Adobe Reader**. The icon next to **.pdf** changes to the '**Adobe Reader**' icon.
- Adobe® Reader® is now the default application for reading .pdf files until you change this file association.


## 2 Scan using ControlCenter2 (Macintosh)

- a** Click the  (ControlCenter2) icon in the Dock. The **ControlCenter2** window appears.

## NOTE

If the  icon is not displayed in the Dock, click **Go** from the **Finder** bar, **Applications**, **Brother**, and then double-click the  icon. The  (ControlCenter2) icon will appear in the Dock.



- b** Click  (**File**).
- c** Click **Start Scanning**. The machine starts to feed and scan your document.
- The scanned data is saved in PDF format.

**Finish**

**The test scan is now complete.**

## NOTE

(ADS-1100W only)

If you set up the machine using a Wireless Network connection and want to try scanning using Scan to FTP, Scan to PC (Network Connect) or WS Scan, see the *User's Guide* to configure the settings for scanning from the Control Panel of the machine.

## Symbols and conventions used in the documentation

The following symbols and conventions are used throughout the documentation:

### **WARNING**

WARNING indicates a potentially hazardous situation which, if not avoided, could result in death or serious injuries.

### **CAUTION**

CAUTION indicates a potentially hazardous situation which, if not avoided, may result in minor or moderate injuries.

### **IMPORTANT**

IMPORTANT indicates a potentially hazardous situation which, if not avoided, may result in damage to property or loss of product functionality.

### **NOTE**

NOTE tells you how you should respond to a situation that may arise or give tips about how the operation works with other features.



Prohibition icons indicate actions that must not be performed.



This icon indicates that flammable sprays may not be used.



This icon indicates that organic solvents such as alcohol and liquids may not be used.



Electrical Hazard icons alert you to possible electrical shocks.



Fire Hazard icons alert you to the possibility of fire.



Unplug icons indicate that you should unplug the machine.

### **Bold**

Bold typeface identifies specific buttons on the machine's control panel, or on the computer screen.

### *Italics*

Italicized typeface emphasizes an important point or refers you to a related topic.

(ADS-1600W  
only)

*Courier New*

Text in the Courier New font identifies messages on the LCD of the machine.

Follow all warnings and instructions marked on the machine and AC adapter (from now on collectively referred to as "the unit").

### **NOTE**

The illustrations in this guide show the ADS-1600W.

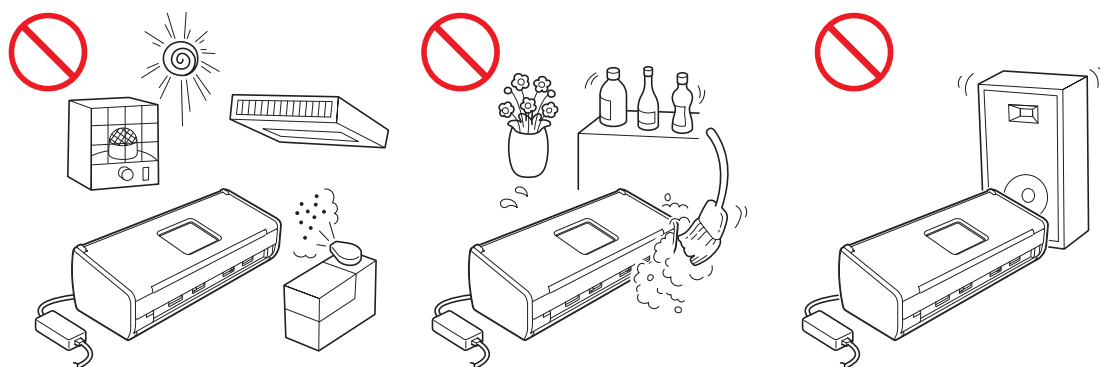
## Compilation and Publication Notice

This manual has been compiled and published to provide the latest product safety information at the time of publication. The information contained in this manual may be subject to change.

For the latest manual, please visit us at [support.brother.com](http://support.brother.com)

## Choose a safe location for the unit

Put the unit on a flat, stable surface that is free from shocks and vibrations, such as a desk. Choose a dry, well ventilated location where the temperature remains between 5 and 35 °C.



### WARNING



**DO NOT** expose the unit to direct sunlight, excessive heat, open flames, corrosive gasses, moisture or dust. **DO NOT** place the unit on a carpet or rug, as this will expose it to dust. Doing so may create a risk of an electrical short or fire. It may also damage the unit and/or render it inoperable.



**DO NOT** place the unit near radiators, heaters, air conditioners, water, chemicals or devices that contain magnets or generate magnetic fields. Doing so may create the risk of a short circuit or fire should water come into contact with the unit (including condensation from heating, air conditioning, and/or ventilation equipment that may be sufficient to create a short circuit or fire).



**DO NOT** place the unit near chemicals or in a place where chemical spillage could occur. In particular, organic solvents or liquids may cause the casing and/or cables to melt or dissolve, risking fire or electric shock. They may also cause the unit to malfunction or become discoloured.



Slots and openings in the casing, back or bottom of the product are provided for ventilation. The product should be placed so as not to come into contact with any wall or other device so these openings are not blocked or covered. Blocking the unit's ventilation could create a risk of overheating and/or fire.

#### IMPORTANT

- Always place the unit on a solid surface, never on a bed, sofa, rug, or similar soft surfaces.
- **DO NOT** place the unit in a “built-in” installation.

## CAUTION

Make sure that no part of the unit protrudes from the desk or stand where the unit is located. Make sure that the unit is located on a flat, level, and stable surface free from vibration. Failure to observe these precautions could cause the unit to fall, causing injury.

DO NOT place the unit on an unstable or tilted cart, stand, and table or on any tilted/slanted surface. The machine may fall, causing injury to you and serious damage to the unit.

## IMPORTANT

- DO NOT put objects on top of the unit.
- DO NOT place the unit next to sources of interference, such as speakers or the base units of non-Brother cordless telephones. Doing so may interfere with the operation of the unit's electronic components.

## General precautions

### WARNING

Plastic bags are used in the packing of the unit. To avoid danger of suffocation, keep these plastic bags away from babies and children. Plastic bags are not toys.



Never insert any objects into the slots in the machine's casing, since they may touch dangerous voltage points or short out parts resulting in the risk of fire or electric shock. If metal objects, water or other liquids get inside the machine, immediately unplug the unit from the electrical socket. Contact your Brother dealer or Brother Customer Service.



DO NOT use flammable substances, any type of spray, or an organic solvent/liquid that contains alcohol or ammonia to clean the inside or outside of the unit. Doing this may cause a fire or electrical shock.



DO NOT disassemble or modify the unit, otherwise fire or electric shock may result. If the unit requires repair, contact your Brother dealer or Brother Customer Service.



DO NOT use a damaged AC adapter.



DO NOT place heavy objects on, damage, or modify the AC adapter. Do not forcibly bend or pull the cord.



DO NOT drop, hit, or otherwise damage the AC adapter.



DO NOT touch the unit during a thunderstorm. There may be a remote risk of electric shock from lightning when the machine is used during a thunderstorm.

# Product Safety Guide

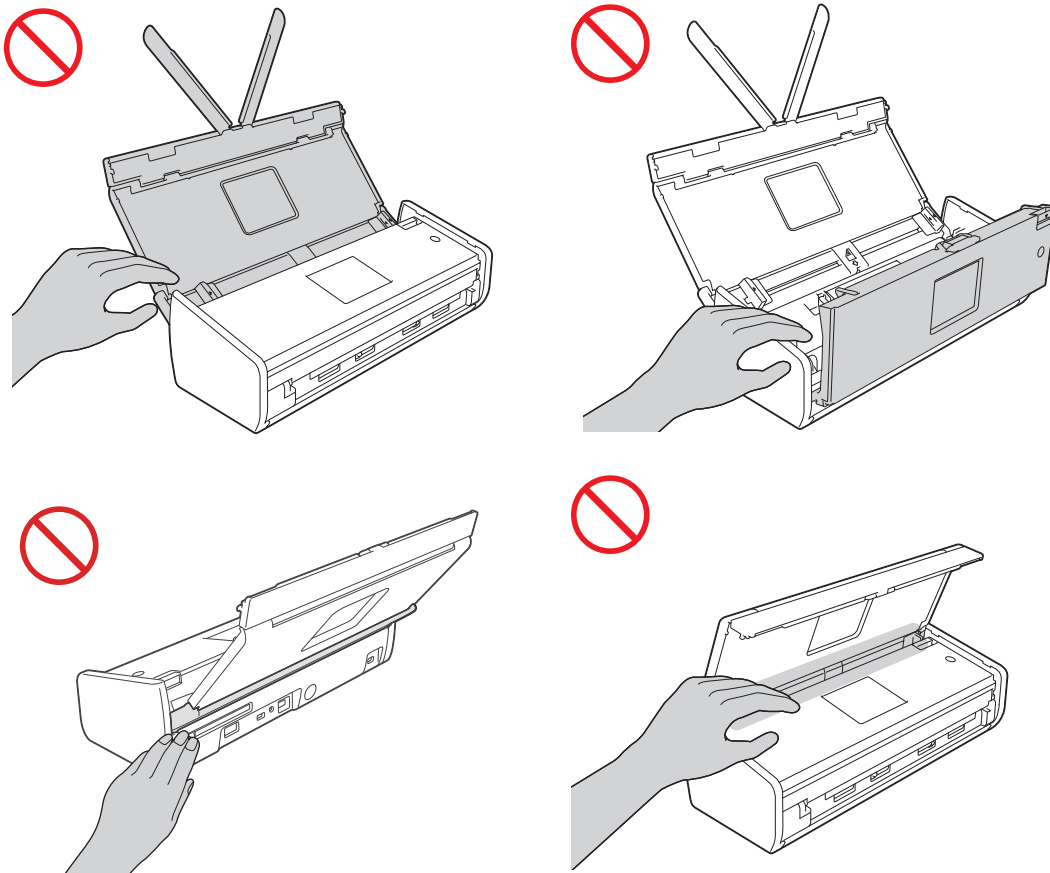


**DO NOT** use the unit near any liquids, for example, near a bath tub, wash bowl, kitchen sink or washing machine, in a wet basement or near a swimming pool.

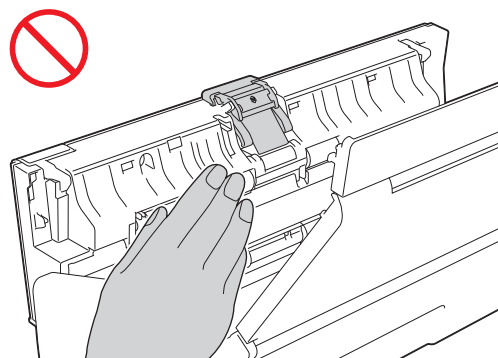
## CAUTION

**DO NOT** try and pick up pages until they have finished scanning and are ejected from the machine. Doing this may cause you injury by trapping your fingers in the rollers.

Some areas of the machine can cause injury if covers (shaded) are closed with force. Take care when placing your hand in the areas shown in the illustrations.

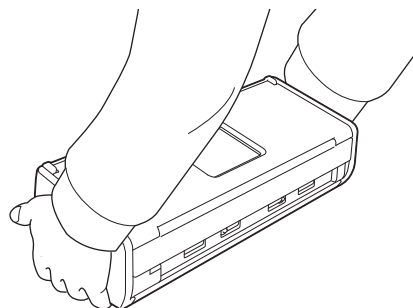
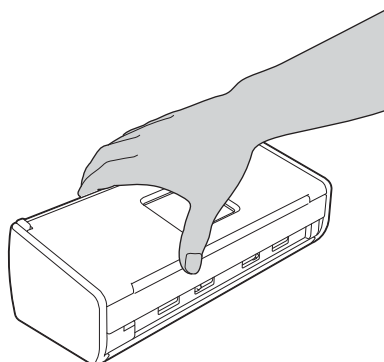


Be careful when touching the Separation Pad and its surrounding area in the machine. Otherwise, you could cause injury to yourself, and serious damage to the machine.

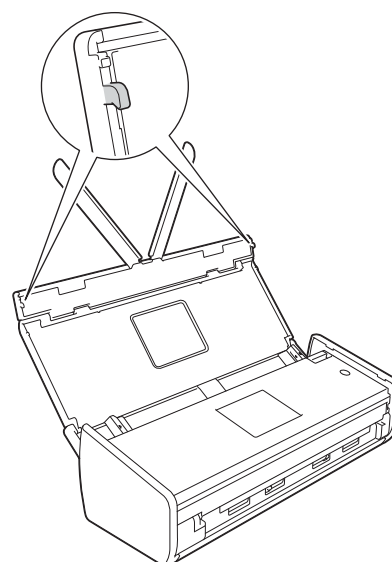
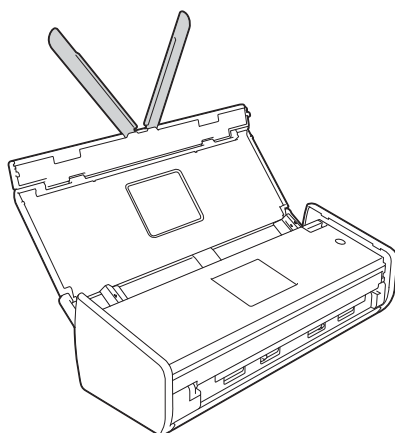


# Product Safety Guide

DO NOT carry the machine by holding the top cover. Doing this may cause the machine to slip out of your hands. Only carry the machine by placing your hands under the entire machine.



Be careful of the projections on the machine. Otherwise, you could cause injury to yourself.



Use caution when operating the machine to prevent clothing (particularly sleeves, neckties, etc.), hair, or accessories from being drawn into the machine, otherwise injury may result. In the event that an object is drawn into the machine, immediately disconnect the unit from the power source.

## IMPORTANT

(ADS-1600W only)

DO NOT touch the Touchscreen immediately after plugging in the power cord or turning on the machine. Doing this may cause an error.

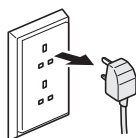


## Connecting the unit safely

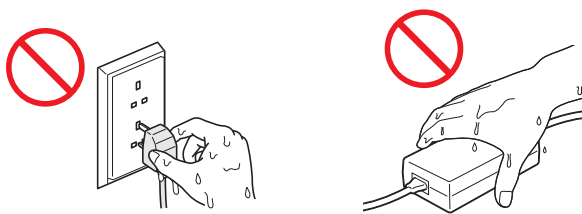
### WARNING



There are high-voltage electrodes inside the unit. Before you access the inside of the machine, (for routine maintenance, such as cleaning), make sure you have unplugged the power cord from the electrical socket.



**DO NOT** touch the AC adapter, or handle the plug with wet hands. Doing this might cause an electrical shock.



**DO NOT** connect it to a DC power source or inverter. Doing this might cause an electrical shock. If you are not sure what kind of power source you have, contact a qualified electrician.



**DO NOT** use the unit if the power cord is frayed or damaged, doing so may cause an electrical shock or a fire.



**DO NOT** pull on the middle of the AC power cord. **DO NOT** allow anything to rest on the power cord. **DO NOT** place the unit where people can walk on the cord. Doing this might cause an electrical shock or a fire.



Brother strongly recommends that you **DO NOT** use any type of extension cord. Failure to observe these precautions could cause fire, electric shock, or damage to the unit.



When disconnecting the AC adapter from the machine or from the power outlet, always hold the connector, not the cable, and pull firmly. Failure to do so may result in exposed or broken power cord wires, fire, or electric shock.



Make sure that one end of the power cord is firmly plugged into a standard power outlet and the other end is plugged into the adapter block firmly. Do not use a power socket that is loose. If the power cord is not completely plugged into the power outlet and adapter block, there is a danger of the adapter becoming hot and catching fire.



Always use the supplied AC adapter, and plug the adapter into a power socket within the voltage range indicated on *Specifications* in the *User's Guide*. Failure to do so may result in injury to yourself or others, or damage to the machine or other property. Brother does not assume any responsibility for any accident or damage resulting from not using the supplied AC adapter.



**DO NOT** connect the supplied AC adapter to other products.



**DO NOT** overload the AC adapter.

If you do not intend using the unit for an extended period of time, disconnect the AC adapter from the power outlet.

## Servicing the unit

DO NOT attempt to service the unit yourself. Opening or removing covers may expose you to dangerous voltages and other risks, and may void your warranty. Contact your Brother dealer or Brother Customer Service.

### **WARNING**



If the unit has been dropped or the casing has been damaged, there may be the possibility of an electric shock or a fire. Unplug the unit from the power socket and contact your Brother dealer or Brother Customer Service.

### **CAUTION**

If the unit becomes unusually hot, releases smoke, generates any strong smells, or if you accidentally spill any liquid on it, immediately unplug the unit from the electrical socket. Contact your Brother dealer or Brother Customer Service.

### **IMPORTANT**

If the machine does not operate normally when the operating instructions are followed, adjust only those controls that are covered by the operating instructions. Incorrect adjustment of other controls may result in damage, and will often require extensive work by a qualified technician to restore the unit to normal operation.

## Product Warranty & Liability

Nothing in this guide shall affect any existing product warranty or be construed as granting any additional product warranty. Failure to follow the safety instructions in this guide may invalidate your product's warranty.

### **WARNING**

**Use only the power cord supplied with this machine.**

**This product must be installed near an electrical socket that is easily accessible. In case of an emergency, you must unplug the power cord from the electrical socket to shut off the power completely.**

## Wiring information (U.K. only)

If you need to replace the fuse in the plug, fit a fuse that is approved by ASTA to BS1362 with the same rating as the original fuse. Always replace the fuse cover. Never use a plug that does not have a cover. If in any doubt, call a qualified electrician.

The wires in the mains lead are coloured in line with the following code:

- Blue: Neutral
- Brown: Live

## Declaration of Conformity (Europe only)

We, Brother Industries, Ltd.

15-1, Naeshiro-cho, Mizuho-ku, Nagoya 467-8561 Japan

declare that this product is in conformity with the essential requirements of all relevant directives and regulations applied within the European Community.

The Declaration of Conformity (DoC) can be downloaded from Brother Solutions Center. Visit [support.brother.com](http://support.brother.com) and:

- > select "Europe"
- > select your country
- > select your model
- > select "Manuals" and your language, then click "Search"
- > select Declaration of Conformity
- > click "Download".

Your Declaration will be downloaded as a PDF file.

## Declaration of Conformity for R&TTE (Radio and Telecommunications) Directive 1999/5/EC (Europe only)

We, Brother Industries, Ltd.

15-1, Naeshiro-cho, Mizuho-ku, Nagoya 467-8561 Japan

declare that this product is in conformity with the provisions of the R&TTE Directive 1999/5/EC. A copy of the Declaration of Conformity can be downloaded by following the instructions in the Declaration of Conformity (Europe only) section.

**[After 13th June 2017]**

## **Declaration of Conformity for RE Directive 2014/53/EU (Europe only)**

We, Brother Industries, Ltd.

15-1, Naeshiro-cho, Mizuho-ku, Nagoya 467-8561 Japan

declare that these products are in conformity with the provisions of the RE Directive 2014/53/EU. A copy of the Declaration of Conformity can be downloaded by following the instructions in the Declaration of Conformity (Europe only) section.

## **Wireless LAN**

This product supports Wireless LAN.

Frequency band(s): 2400 - 2483.5 MHz

Maximum radio-frequency power transmitted in the frequency band(s): less than 20 dBm (e.i.r.p).

## **Radio interference**

This product complies with EN55022 (CISPR Publication 22)/Class B. When connecting the machine to a computer, ensure that you use a USB cable which does not exceed 2 m in length.

## **Recycling information in accordance with the WEEE and Battery Directives**



Product mark



Battery mark

**European Union only**

The product/battery is marked with one of the above recycling symbols. It indicates that at the end of the life of the product/battery, you should dispose of it separately at an appropriate collection point and not place it in the normal domestic waste stream.

## **International ENERGY STAR® Qualification Statement**

The purpose of the International ENERGY STAR® Program is to promote the development and popularization of energy-efficient office equipment.

As an ENERGY STAR® Partner, Brother Industries, Ltd. has determined that this product meets the ENERGY STAR® specifications for energy efficiency.



## Trademarks

The Brother logo is a registered trademark of Brother Industries, Ltd.

Brother is a registered trademark of Brother Industries, Ltd.

Microsoft, Windows, Windows Vista, Windows Server, Outlook and Internet Explorer are either registered trademarks or trademarks of Microsoft Corporation in the United States and/or other countries.

Apple, Macintosh, Mac OS and Safari are trademarks of Apple Inc., registered in the United States and other countries.

Nuance, the Nuance logo, PaperPort and ScanSoft are trademarks or registered trademarks of Nuance Communications, Inc. or its affiliates in the United States and/or other countries.

AOSS is a trademark of Buffalo Inc.

WPA, WPA2, Wi-Fi Protected Access and Wi-Fi Protected Setup are marks of the Wi-Fi Alliance.

Wi-Fi and Wi-Fi Alliance are registered marks of the Wi-Fi Alliance.

AMD is a trademark of Advanced Micro Devices, Inc.

Linux is the registered trademark of Linus Torvalds in the U.S. and other countries.

Android is a trademark of Google Inc.

ISIS, Captiva and QuickScan are either registered trademarks or trademarks of EMC Corporation in the United States and/or other countries.

Intel is a trademark of Intel Corporation in the U.S. and/or other countries.

Adobe, Reader and Photoshop are either registered trademarks or trademarks of Adobe Systems Incorporated in the United States and/or other countries.

Each company whose software title is mentioned in this manual has a Software License Agreement specific to its proprietary programs.

**Any trade names and product names of companies appearing on Brother products, related documents and any other materials are all trademarks or registered trademarks of those respective companies.**

## Compilation and Publication

Under the supervision of Brother Industries, Ltd., this manual has been compiled and published, covering the latest product descriptions and specifications.

The contents of this manual and the specifications of this product are subject to change without notice.

Brother reserves the right to make changes without notice in the specifications and materials contained herein and shall not be responsible for any damages (including consequential) caused by reliance on the materials presented, including but not limited to typographical and other errors relating to the publication.

## Copyright and License

© 2013 Brother Industries, Ltd. All rights reserved.

This product includes software developed by the following vendors:

© 1983-1998 PACIFIC SOFTWARES, INC.

© 2008 Devicescape Software, Inc.

This product includes the "KASAGO TCP/IP" software developed by ZUKEN ELMIC, Inc.

## Open Source Licensing Remarks

This product includes open-source software.

To see the open source licensing remarks, please go to the manual download section on your model's home page on Brother Solutions Center at [support.brother.com](http://support.brother.com)

## Brother Customer Service

### Customer Service

Visit [www.brother.com](http://www.brother.com) for contact information on your local Brother office.

### Service centre locations

For service centres in Europe, contact your local Brother Office. Address and telephone contact information for European offices can be found at [www.brother.com](http://www.brother.com) by selecting your country.

## Unlawful use of scanning equipment

It is an offence to make reproductions of certain items or documents with the intent to commit fraud. The following is a non-exhaustive list of documents which it may be unlawful to produce copies of. We suggest you check with your legal adviser and/or the relevant legal authorities if in doubt about a particular item or document:

- Currency
- Bonds or other certificates of indebtedness
- Certificates of deposit
- Armed forces service or draft papers
- Passports
- Postage stamps (cancelled or uncanceled)
- Immigration papers
- Welfare documents
- Cheques or drafts drawn by governmental agencies
- Identifying badges or insignias

Copyrighted works cannot be copied lawfully, subject to the "fair dealing" exception relating to sections of a copyrighted work. Multiple copies would indicate improper use. Works of art should be considered the equivalent of copyrighted works.

## Notice Regarding the Faithful Reproduction of Scanned Documents

After scanning a document, confirm that the accuracy and quality of the corresponding scan data meets your needs by confirming the size of the scan data, the amount of image data captured, image fidelity, colour tones, etc.

Always confirm the scan data before destroying the original document.

It is possible that a portion of the scan data may be lost or damaged, therefore, read all instructions carefully and keep the following in mind:

- Depending on the condition of the document, the document may become worn thin, distorted, dirty, or cracked during scanning. In this case, some or all of the scan data may be lost.

Confirm that the document has no wrinkles, bends, or holes.

- If the inside of the machine is dirty, the document may become worn thin, distorted, dirty, or cracked during scanning. In this case, some or all of the scan data may be lost.

Clean the inside of the machine carefully and regularly.

- The following may occur depending on the scan settings, such as document size, scanning resolution, colour-related settings, single-side or double-side scanning settings, auto deskew, blank page skip, etc:

- Text may be illegible or unclear if image resolution is too low.
- Scan data of a colour document may be captured in black-and-white.
- Only one side of a two-sided document may be captured.
- A portion of the document may not be scanned, or the size may be too small.
- The document may only be scanned up to a certain point, after which scan data will be lost.
- Blank pages may not be deleted, or pages may be deleted unnecessarily.
- Margins may be added to the edges of the scan data.

Refer to the User's Guide for information about how to configure the scan settings.

- Depending on the condition of the document (such as if it has wrinkles, bends, or holes) and consumables, multiple pages of a document may be fed at once, causing some pages to be missing from the scanned data.

Confirm that the document has no wrinkles, bends, or holes.

Replace all consumables periodically.

- When scanning documents that are not within the recommended guidelines, or depending on the condition of the document (such as if it has wrinkles, bends, or holes), consumables, or the paper feeding mechanisms inside the machine, documents may become jammed inside the machine during scanning. In this case, some or all of the scan data may be lost. (Documents may be destroyed as a result of a paper jam.)

Refer to "Acceptable Documents" in the User's Guide for information about acceptable documents.

- When scanning documents that have been marked with a fluorescent marker, marked areas may not be seen correctly in the scan data, or the marker colour may not be reproduced correctly, depending on the colour and density of the marker ink.

You may achieve more desirable results by increasing the scanning resolution. Refer to the User's Guide for information about resolution settings.

# brother

**Visit us on the World Wide Web**  
**[www.brother.com](http://www.brother.com)**



**[www.brotherearth.com](http://www.brotherearth.com)**