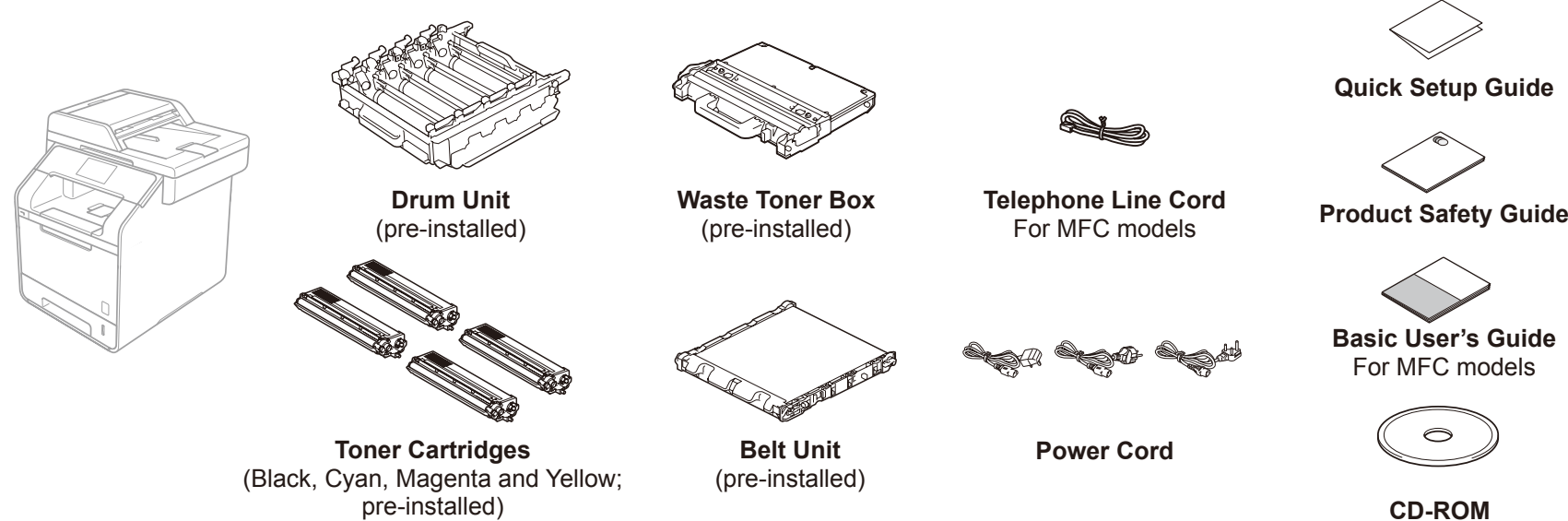


Unpack the machine and check the components

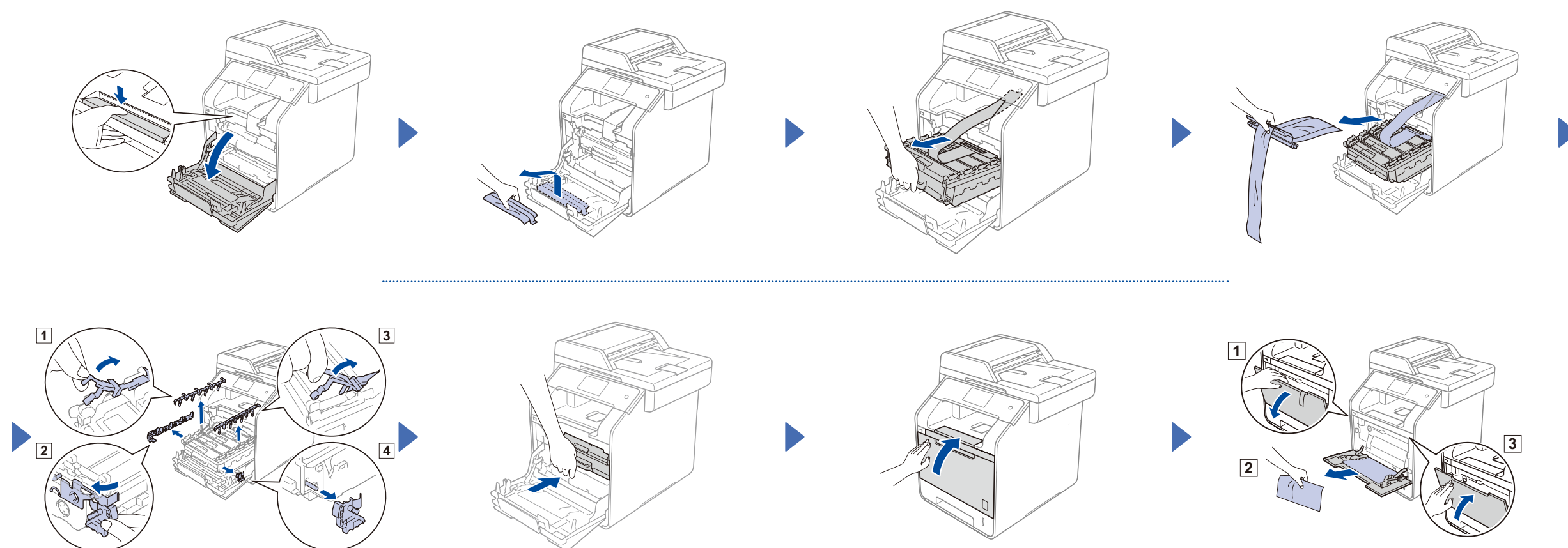


Read the Product Safety Guide first, and then read this Quick Setup Guide for the correct installation procedure.

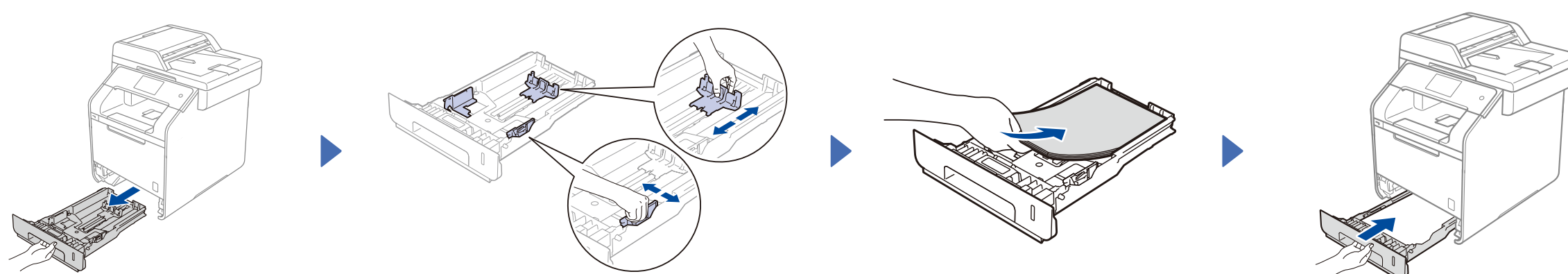
NOTE:

- The components included in the box and the AC power plug connection may differ depending on your country.
- The illustrations in this Quick Setup Guide are based on the MFC-L8850CDW.
- You must purchase the correct interface cable for the interface you want to use:
USB cable
We recommend using a USB 2.0 cable (Type A/B) that is no more than 2 metres long.
Network cable
Use a straight-through Category 5 (or greater) twisted-pair cable for 10BASE-T or 100BASE-TX Fast Ethernet Network.

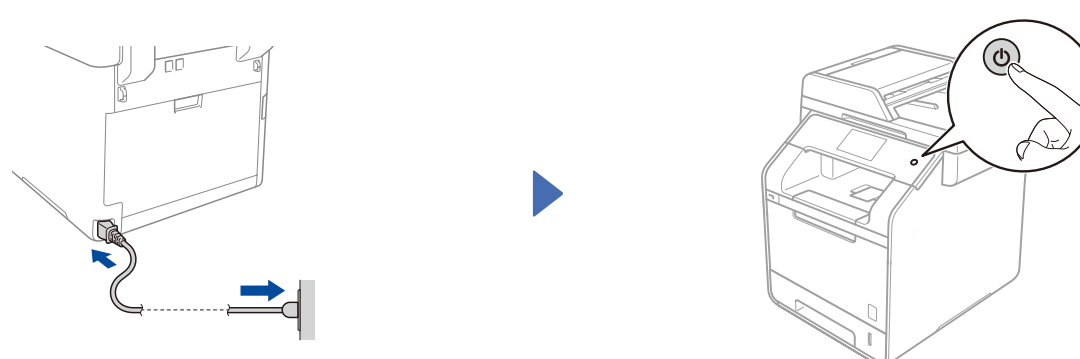
1 Remove the packing material from the machine



2 Load paper in the paper tray

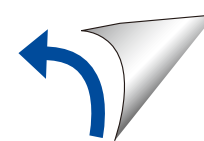


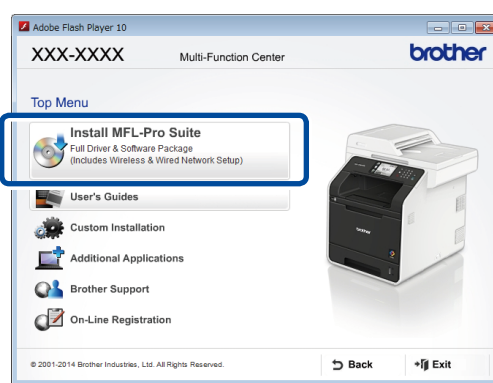
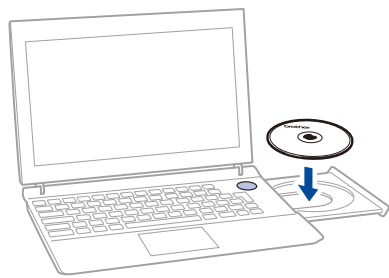
3 Connect the power cord and turn on the machine



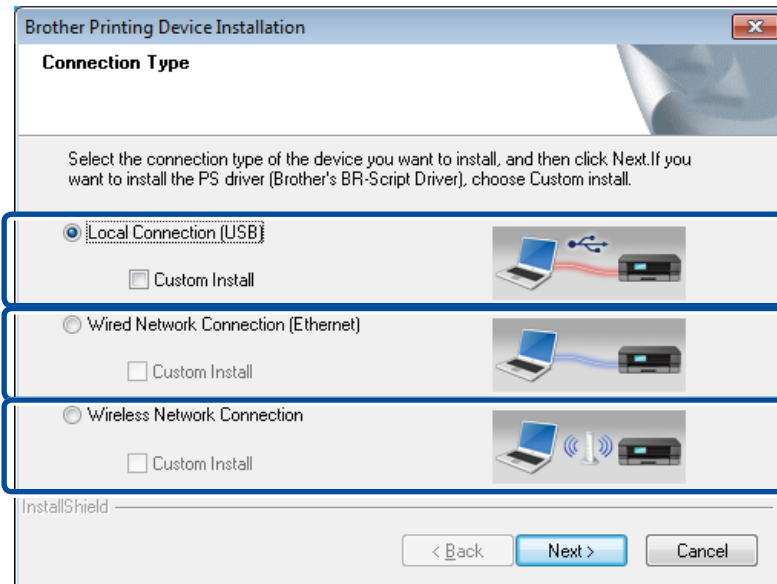
4 Select your country (for MFC models)

- After turning on the machine, the Touchscreen displays the list of countries you can select. Swipe up or down, or press ▲ or ▼ to display your country, and press your country. Press OK.
- The Touchscreen prompts you to confirm your selection. If the Touchscreen shows the correct country, press Yes.
—OR—
Press No to go back to step 1 to choose the country again.





Follow the on-screen instructions until the **Connection Type** screen appears.



For USB Connection

For Wired Network Connection
Connect a network cable first.

For Wireless Network Connection

Follow the on-screen instructions to continue the installation.

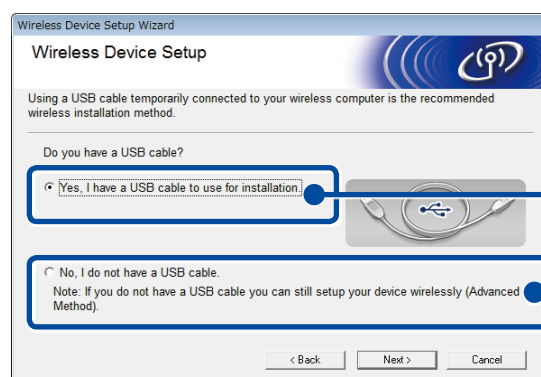
Finish

NOTE:

If connection is unsuccessful, repeat this step.



Wireless Network Connection



[Recommended]
Temporarily use a USB cable
for easy setup.

[Option]
Select if you do not have a USB cable.

Follow the on-screen instructions to continue the installation.

Finish

NOTE:

If connection is unsuccessful, repeat this step.



Configuration without using the CD-ROM (Windows® without CD-ROM drive or Macintosh)

Download the full driver and software package from the Brother Solutions Center.

(For Windows®) solutions.brother.com/windows

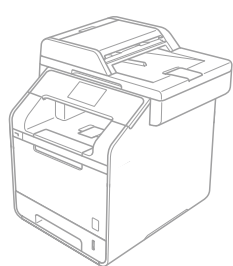
(For Macintosh) solutions.brother.com/mac



Print using your mobile device

Print from your mobile devices using our free application "Brother iPrint&Scan".

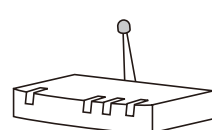
1. Connect the machine and wireless LAN access point/router from the machine's Touchscreen.



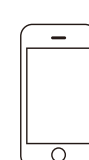
Press **WiFi**.



Press **Setup Wizard**.



Press **Yes** to enable WLAN.



Select the specified SSID,
and then enter the Network key.

2. Download "Brother iPrint&Scan" to start using your machine with mobile devices.
solutions.brother.com/ips

Finish