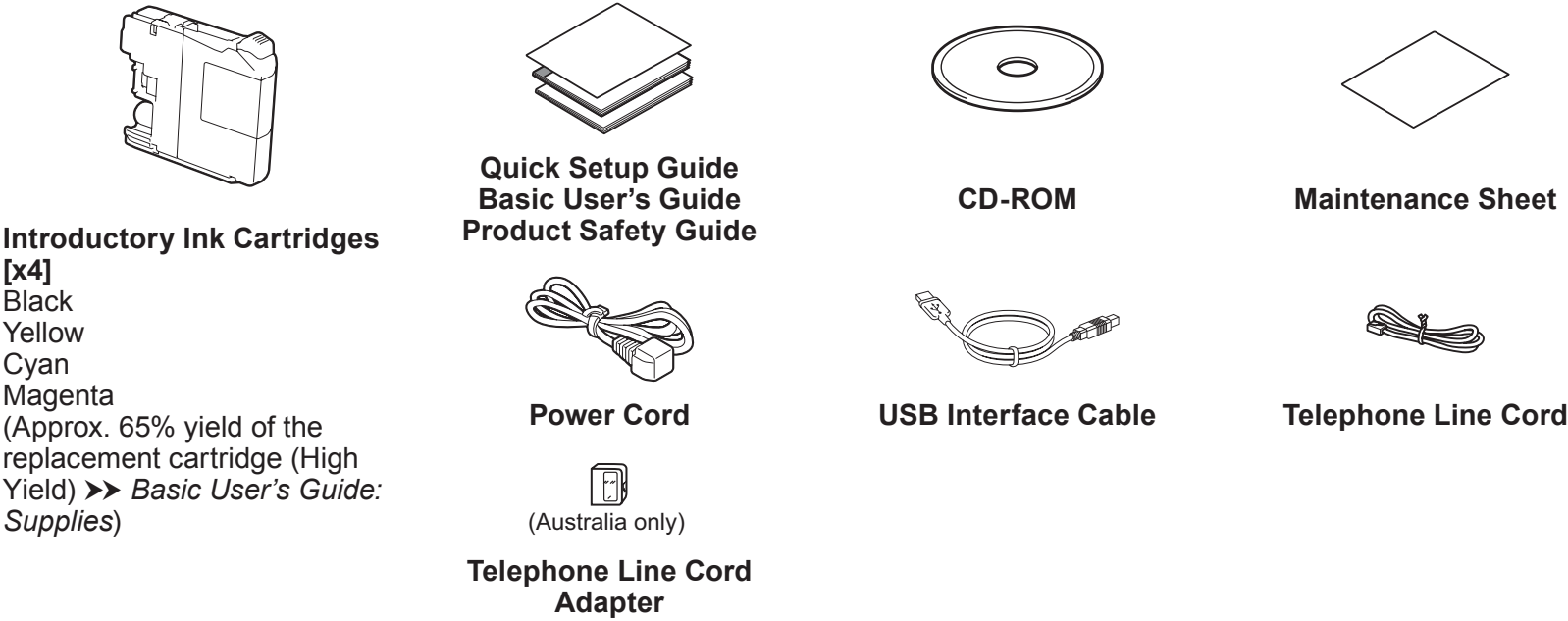


Unpack the machine and check the components

1. Remove the protective tape and film covering the machine, and also from the Touchscreen.
2. Make sure you have all components.
The components included in the box may differ depending on your country.



WARNING

Plastic bags are used in the packing of your machine. To avoid the danger of suffocation, keep these plastic bags away from babies and children. Plastic bags are not toys.

NOTE

- Save all packing materials and the box in case for any reason you must ship your machine.
- For a network connection you must purchase a network interface cable. Please use the supplied USB cable for a USB connection.

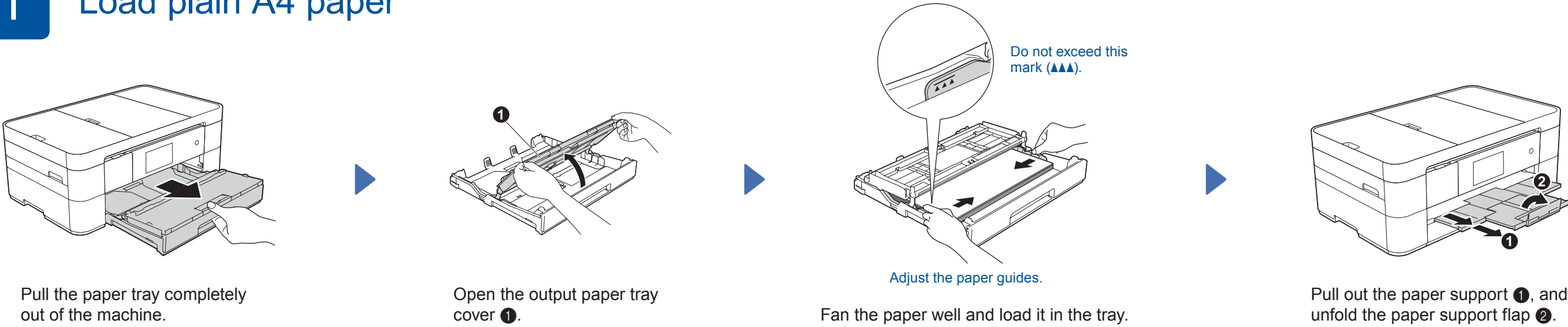
USB cable

We recommend using a USB 2.0 cable (Type A/B) that is no more than 2 metres long.

Network cable

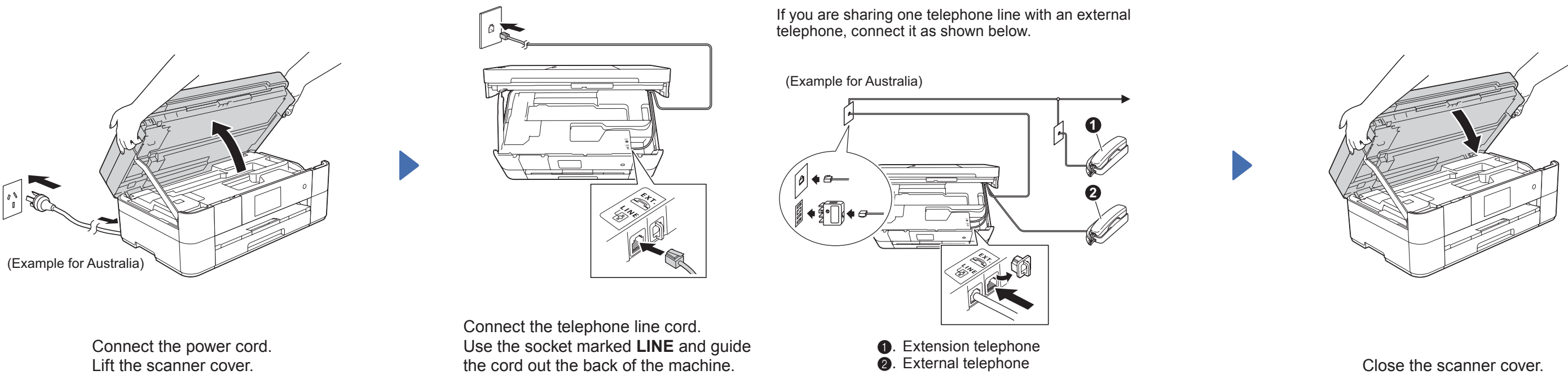
Use a straight-through Category5 (or greater) twisted-pair cable for 10BASE-T or 100BASE-TX Fast Ethernet Network.

1 Load plain A4 paper



2 Connect power cord and telephone line cord

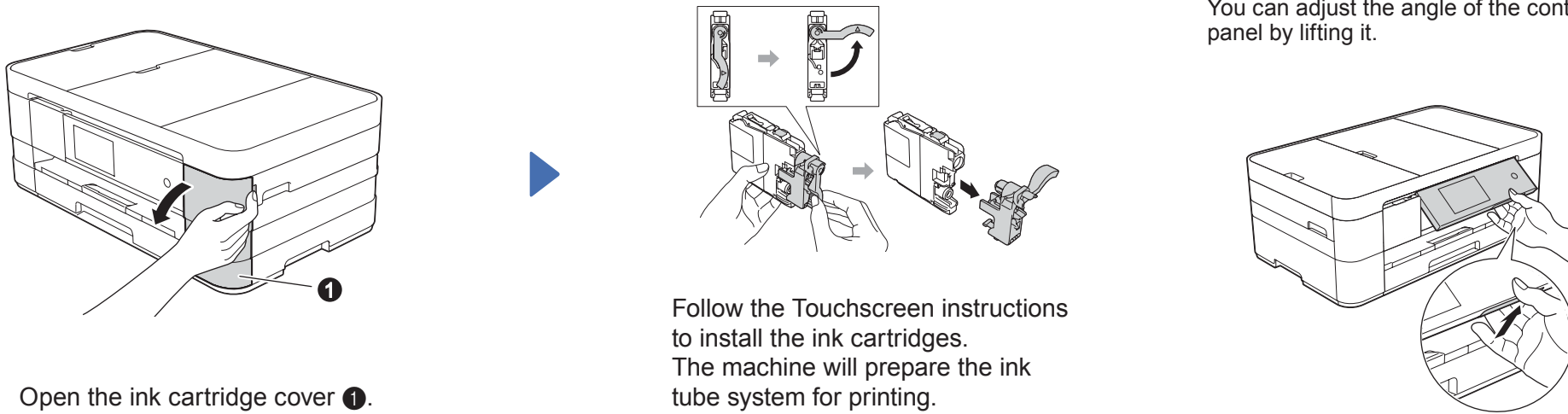
If you are not using your machine as a fax, connect the power cord and go to 3.



3 Set your country

1. Press your country.
Press **OK**.
2. Press **Yes** or **No**.
3. After the LCD shows **Accepted** for a few seconds, the machine will restart automatically.

4 Install introductory ink cartridges



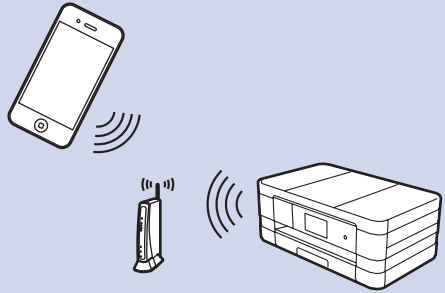
5 Machine Settings

When the machine has finished the initial cleaning process, follow the Touchscreen instructions to configure the machine settings.

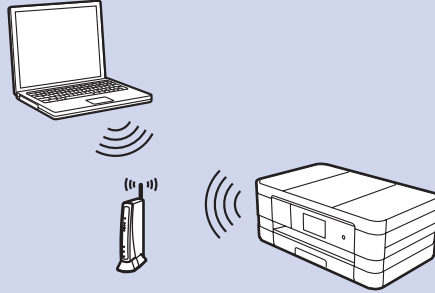
- Check print quality
- Set date and time
- View operation tips
- Print the installation sheet



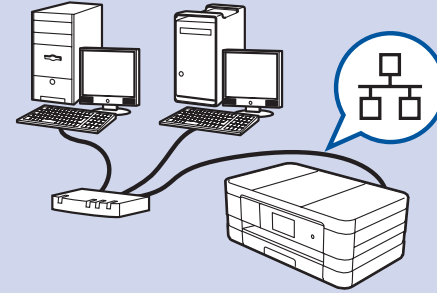
Mobile

Go to **7** For Wireless Networks **Method B**

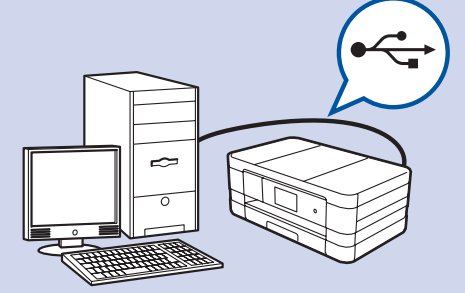
Wireless Network

Go to **7** For Wireless Networks
Method A or **Method B**

Wired Network

Go to **7** For Wired Networks

USB

Go to **7** For USB Connections

Connect to your device and install software

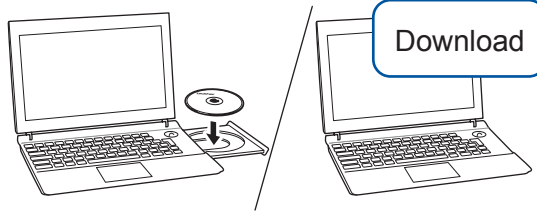


For Wireless Networks

To connect additional computers, repeat Method A for each computer.

Method A Setup from the computer

Make sure that you are logged on with Administrator rights.

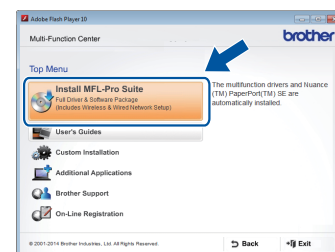


Download

Put the CD-ROM into your CD-ROM drive. If you do not have a CD-ROM drive, download the software at:
For Windows®: solutions.brother.com/windows
For Macintosh: solutions.brother.com/mac



Windows®



Macintosh



Follow the on-screen instructions to continue installation.
A USB cable may be needed in some cases.

**Finish****Method B** Manual setup using the Setup Wizard

■ Set up your machine

1. Write your wireless access point/router information in the area below. This information may be hidden on the bottom of the wireless access point/router. If you cannot find it, ask your network administrator or wireless access point/router manufacturer.

SSID (Network Name)	
Network Key (Password)	



2. Press **WiFi** on your Brother machine's Touchscreen, and then press Setup Wizard. When Switch Network interface to wireless? is displayed, press Yes.
3. Select the SSID you wrote down in 1. Press OK.
4. If the machine prompts you to enter a Network Key, enter the key you wrote down in 1. Press OK.
5. Press Yes to apply your settings.

■ Install Brother iPrint&Scan

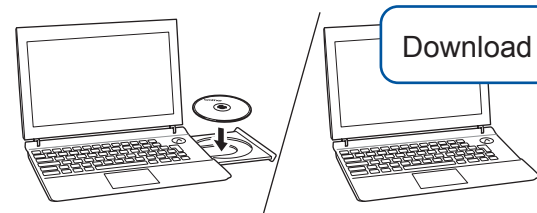


You can print from and scan to mobile devices using our free application "Brother iPrint&Scan." Download and install the application from solutions.brother.com/ips.

**Finish**

■ Install MFL-Pro Suite

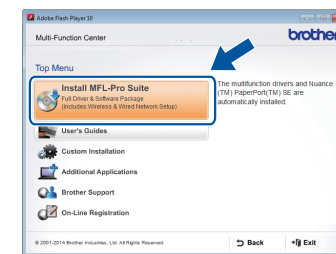
Make sure that you are logged on with Administrator rights.



Download

Put the CD-ROM into your CD-ROM drive. If you do not have a CD-ROM drive, download the software at:
For Windows®: solutions.brother.com/windows
For Macintosh: solutions.brother.com/mac

Windows®



Macintosh



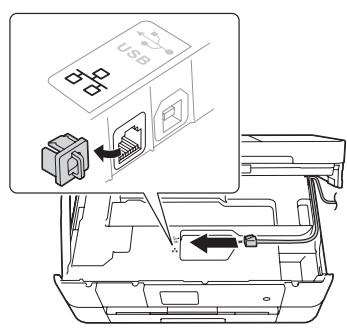
Follow the on-screen instructions to continue installation.

**Finish**

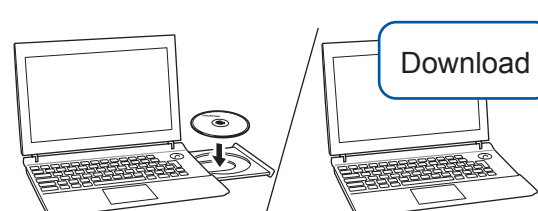
For Wired Networks

To connect additional computers, repeat this procedure for each computer.

■ Connect the network cable



■ Install MFL-Pro Suite

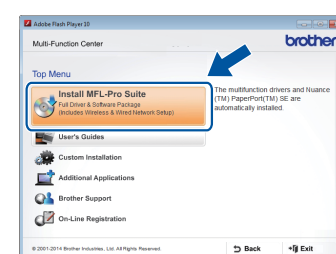


Download

Make sure that you are logged on with Administrator rights.

Put the CD-ROM into your CD-ROM drive. If you do not have a CD-ROM drive, download the software at:
For Windows®: solutions.brother.com/windows
For Macintosh: solutions.brother.com/mac

Windows®



Macintosh

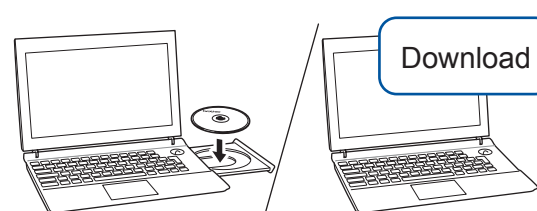


Follow the on-screen instructions to continue installation.

**Finish**

For USB Connections

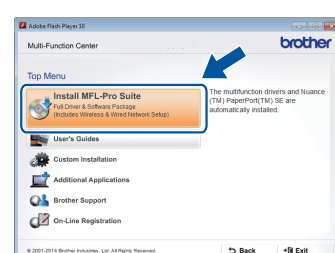
■ Install MFL-Pro Suite



Download

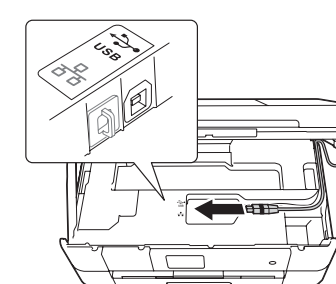
Make sure that you are logged on with Administrator rights.

Put the CD-ROM into your CD-ROM drive. If you do not have a CD-ROM drive, download the software at:
solutions.brother.com/windows



Follow the on-screen instructions.

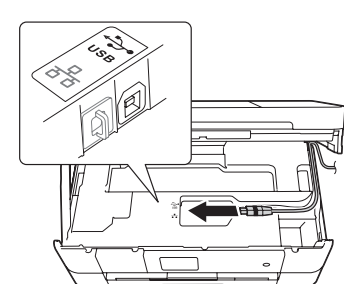
■ Connect the USB cable



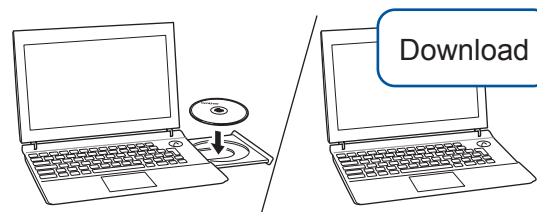
Follow the on-screen instructions to continue installation.

**Finish**

■ Connect the USB cable



■ Install MFL-Pro Suite



Download

Make sure that you are logged on with Administrator rights.

Put the CD-ROM into your CD-ROM drive. If you do not have a CD-ROM drive, download the software at:
solutions.brother.com/mac



Internet access is required. Follow the on-screen instructions to continue installation.

**Finish**