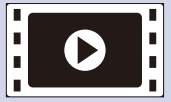


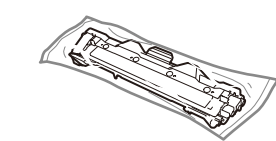
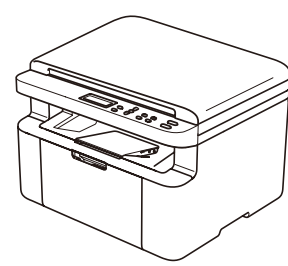
Quick Setup Guide

The latest manuals are available at the Brother Solutions Center: solutions.brother.com/manuals.

Unpack the machine and check the components



Watch our FAQ Videos for help with setting up your Brother machine:
solutions.brother.com/videos.



Starter Toner Cartridge



CD-ROM



A5 Long Edge Paper Input Support

Read the Product Safety Guide first, then read this Quick Setup Guide for the correct installation procedure.

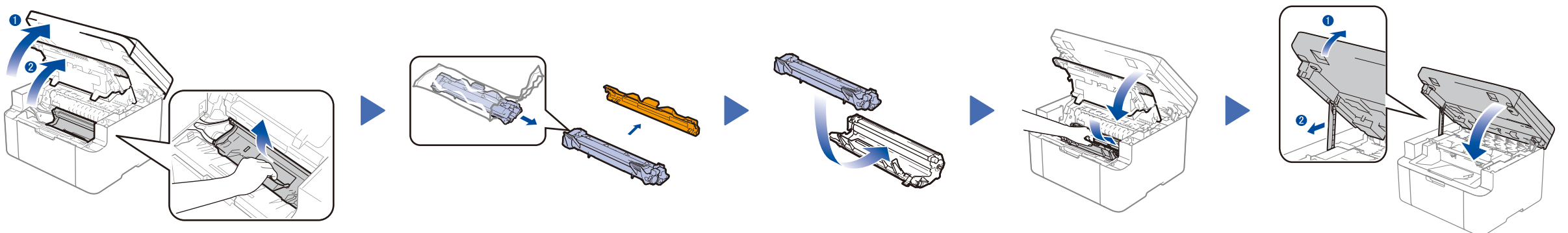
NOTE:

- The components included in the box and the AC power plug may differ depending on your country.
- You must purchase the correct interface cable for the interface you want to use.

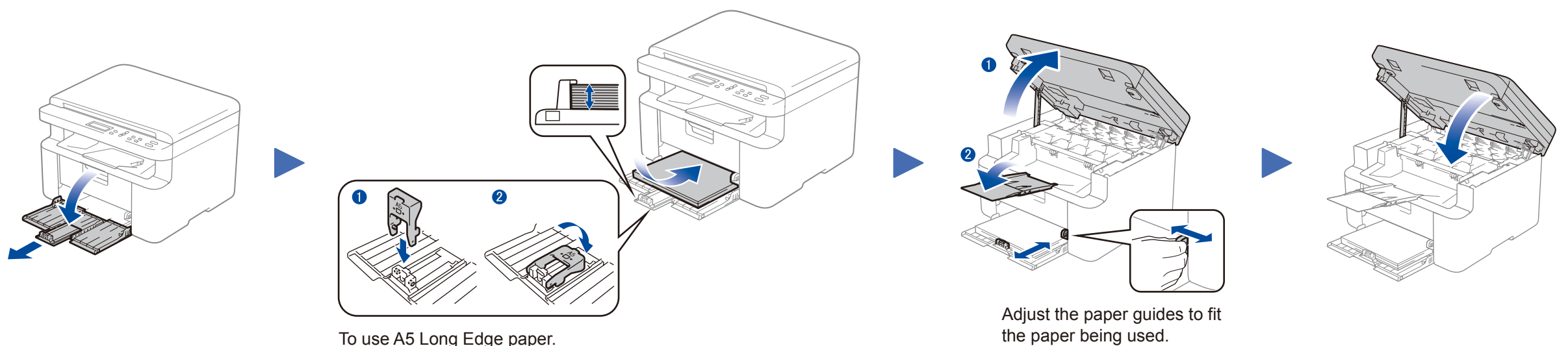
USB cable

We recommend using a USB 2.0 cable (Type A/B) that is no more than 6 feet (2 meters) long.

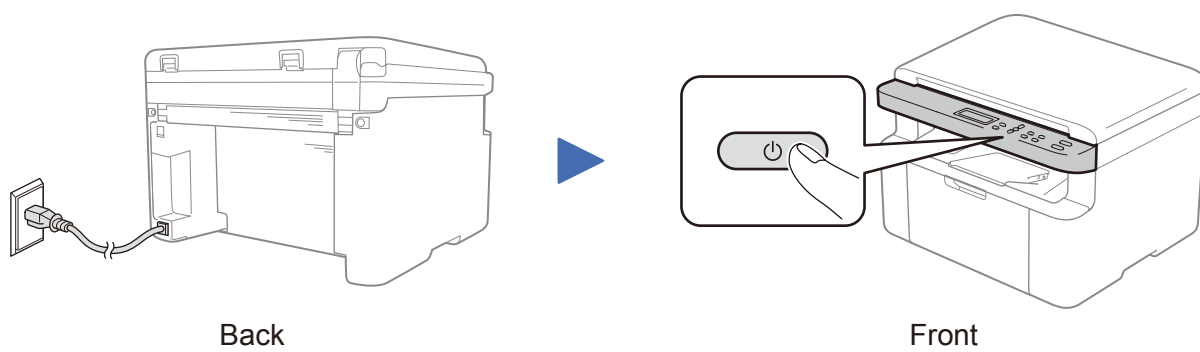
1 Remove the packing materials and install the toner cartridge



2 Load paper in the paper tray



3 Connect the power cord and turn on the machine



4 Change your language (if needed)

- Press **Menu**, and then press **▲** or **▼** to choose **1.General Setup**.
- Press **OK**.
- Press **▲** or **▼** to choose **0.Local Language**, and then press **OK**.
- Press **▲** or **▼** to select your language, and then press **OK**.
- Press **Stop/Exit**.

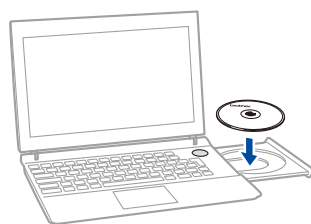
5 Connect the machine to your computer/mobile device

- Windows® PC with a CD-ROM drive, go to step **5A**
- Windows® PC without a CD-ROM drive, go to step **5B**
- Macintosh, go to step **5B**
- Mobile device users with a WPS/AOSS™-supported access point/router, go to step **5C**



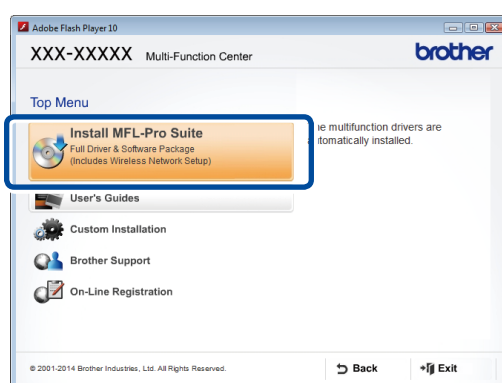


Configuration using the CD-ROM (Windows®)



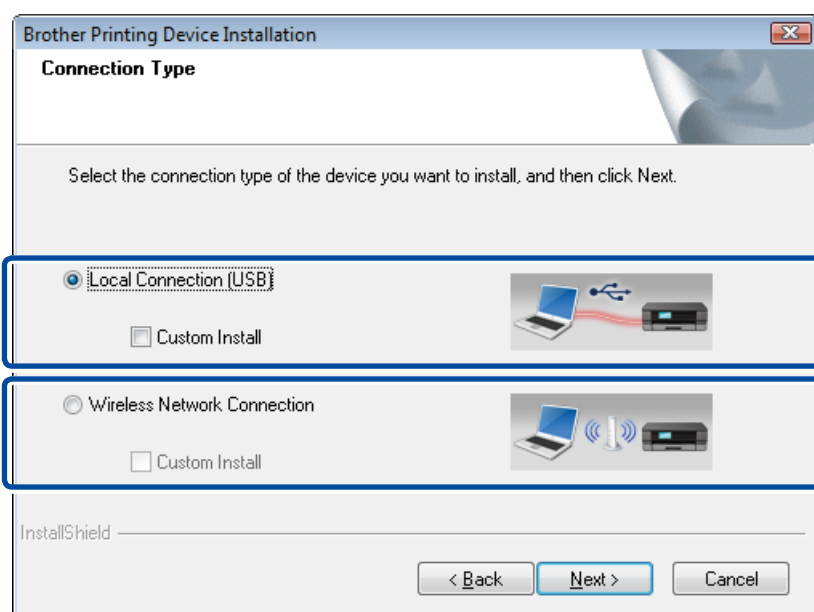
NOTE:

If the Brother screen does not appear automatically, go to **Computer (My Computer)**.
(For Windows® 8: click the (File Explorer) icon on the taskbar, and then go to **Computer**.)
Double-click the CD-ROM icon, and then double-click **start.exe**.



Follow the on-screen instructions until the **Connection Type** screen appears.

Connection Type



For USB Connection

For Wireless Network Connection
We recommend preparing a USB cable to use temporarily during the wireless setup.

Follow the on-screen instructions to continue installation.

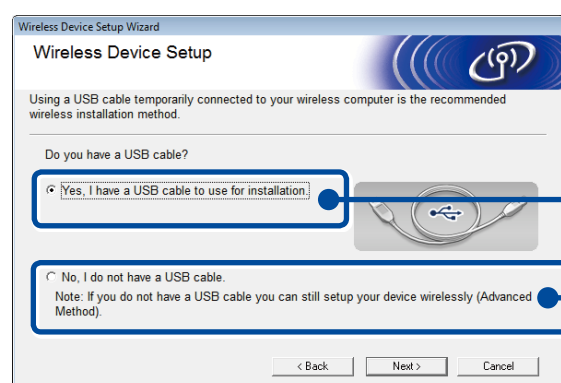
Finish

NOTE:

If connection is unsuccessful, repeat this step.



Wireless Network Connection



[Recommended]

Select this option if you have a USB cable to use temporarily for wireless setup.

Select this option if you do not have a USB cable.

Follow the on-screen instructions to continue installation.

Finish

NOTE:

If connection is unsuccessful, repeat this step.



Configuration without using the CD-ROM (Windows® without CD-ROM drive or Macintosh)

Download the full driver and software package from the Brother Solutions Center.

(For Windows®) solutions.brother.com/windows

(For Macintosh) solutions.brother.com/mac

After you download the driver and software package, follow the on-screen instructions until the **Connection Type** screen appears. Refer to **5A Configuration using the CD-ROM (Windows®)**.

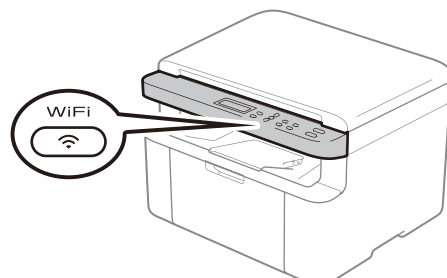


One-push wireless setup for mobile devices

If your wireless LAN access point/router supports automatic wireless (one-push) setup (WPS/AOSS™), you can set up your machine without using a computer.



Press the WPS or AOSS™ button on your wireless LAN access point/router.



Press the **WiFi** button on your machine.

Wireless setup is now complete.

NOTE:

Before you can use your machine with your mobile device, download "Brother iPrint&Scan."



Print and scan using your mobile device

Download "Brother iPrint&Scan" to start using your machine with mobile devices.



solutions.brother.com/ips