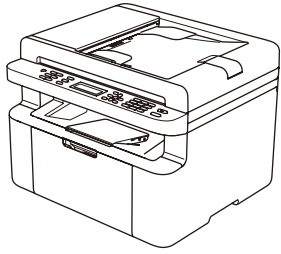


Quick Setup Guide

Read the *Product Safety Guide* first, then read this *Quick Setup Guide* for the correct installation procedure.



Unpack the machine and check the components

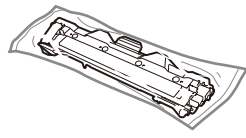
Operation Videos

www.95105369.com



Installation
& Using
Videos

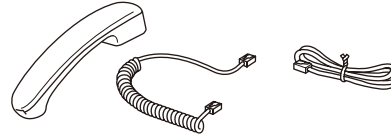
Inbox Toner Cartridge



USB Interface Cable



Handset, Handset Cord and
Phone Line Cord
(For MFC-1919NW)



CD-ROM

A5 Long Edge Paper
Input Support



Quick Setup Guide,
Product Safety Guide and
User's Guide



NOTE:

- The illustrations in this Quick Setup Guide are based on the MFC-1919NW.
- You must purchase the correct interface cable for the interface you want to use.

USB cable

We recommend using a USB 2.0 cable (Type A/B) that is no more than 2 metres long.

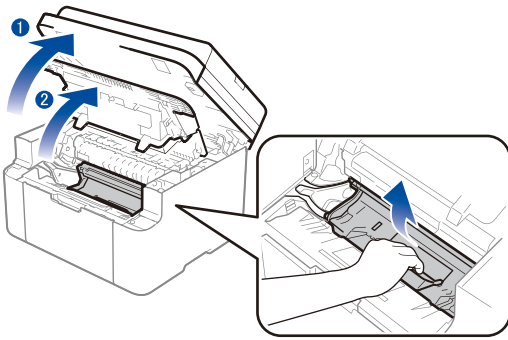
Network cable

Use a straight-through Category 5 (or greater) twisted-pair cable for 10BASE-T or 100BASE-TX Fast Ethernet Network.

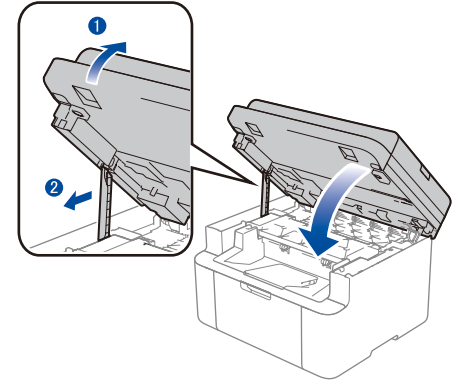
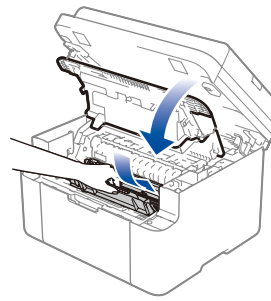
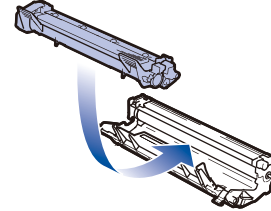
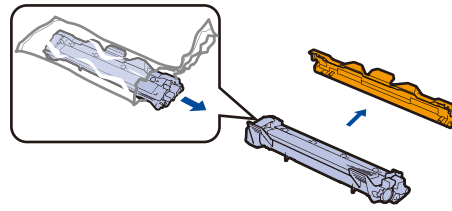
Secure Network Access

Your machine's default password is on the label on the back of the machine (preceded by "Pwd"). We strongly recommend you change it to protect your machine from unauthorised access.

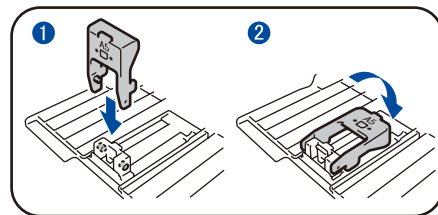
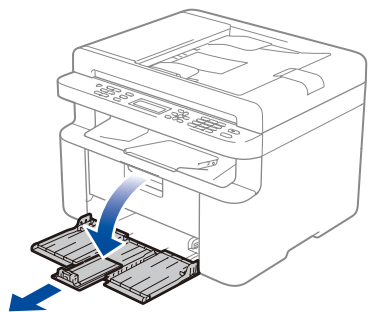
1 Remove the packing materials and install the toner cartridge



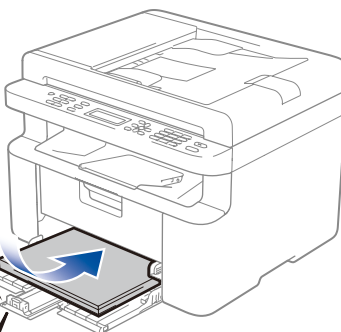
Drum Unit (Remove the drum unit)



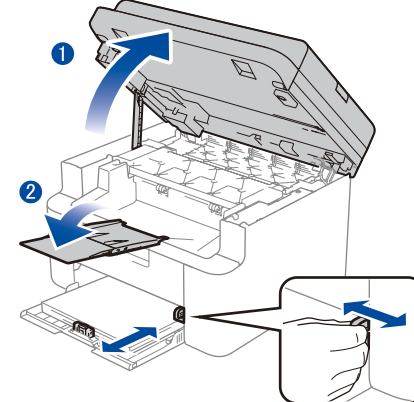
2 Load paper in the paper tray



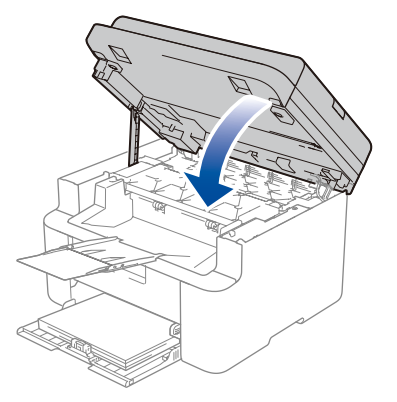
To use A5 Long Edge paper.



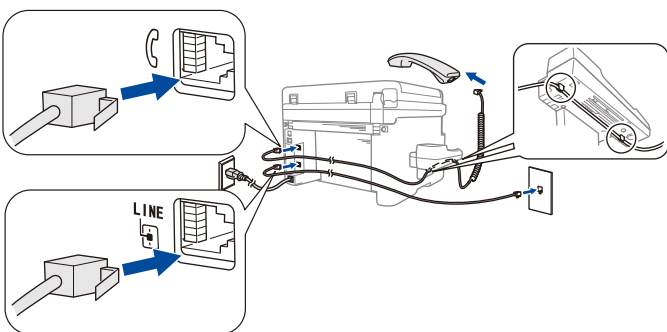
With the printing surface face down



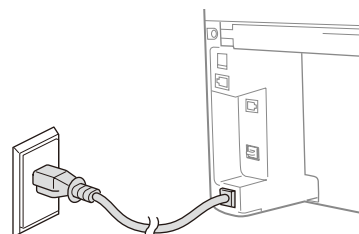
Adjust the paper guides to fit the paper being used.



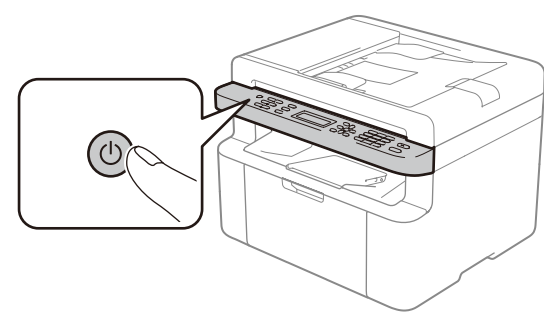
3 Connect the telephone line cord, the power cord and turn on the machine



Connect the handset cord and the telephone line cord
(Only for MFC-1919NW)



Back



Front

4 Printing and scanning using your mobile device

Your mobile device must be connected to the same wireless network as your Brother machine.

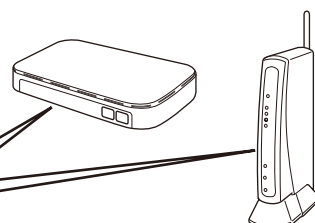
STEP1: According to the kinds of Wireless LAN Access Point/Router, there are two ways to connect Brother machine to WLAN Access Point/Router.

1) If your Wireless LAN Access Point/Router does not support WPS/AOSS™, please connect Brother machine to the WLAN Access Point/Router by setting Setup Wizard on Brother machine. (Take DCP-1618W as an example)

Find your SSID (Network Name) and Network Key (Password) on your wireless access point/router and write them in the table provided below.

SSID (Network Name)	
Network Key (Password)	

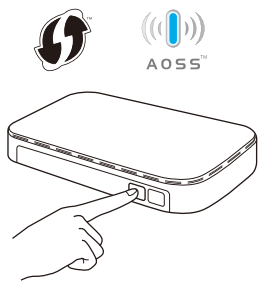
SSID: XXXXXXXX
Network key: XXXX



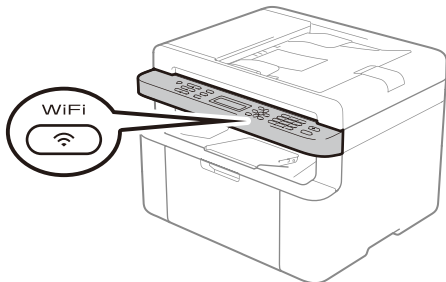
If you cannot find this information, ask your network administrator or wireless access point/router manufacturer.

- Press **Menu** key on control panel of Brother machine.
- Press **▲** or **▼** key until show [4.Network], and press **OK** key.
- Press **▲** or **▼** key until show [1.WLAN], and press **OK** key.
- Press **▲** or **▼** key until show [3.Setup Wizard], and press **OK** key.
- Show [WLAN Enable? ▲ On ▼ Off], press **▲** key to enable it.
- Show [Searching SSID], after showing the searched SSIDs, press **▲** or **▼** key to select the SSID name of your router and press **OK** key.
- Hold down or repeatedly press **▲** or **▼** key to select a character. Press **OK** when the character or symbol you want is displayed, and then enter the next character. After repeating these steps to enter passwords, press **OK** key.
- Show [Apply? Yes], press **OK** key.
- Show [Connecting WLAN], if success. Show [Connected Printing], it will print a WLAN report.

2) If your Wireless LAN Access Point/Router supports One Push Method of WPS/AOSS™, you can connect Brother machine to the WLAN Access Point/Router directly and easily.



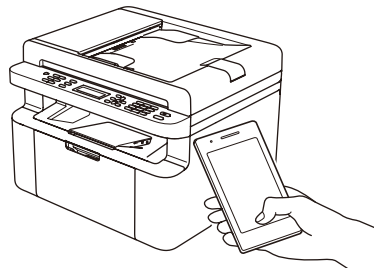
Press the WPS or AOSS™ button on your wireless LAN access point/router.



Press the **WiFi** button on your machine.
Show [Setup Wi-Fi ▲ Yes ▼ No], press ▲ key.
Several minutes later, shows [Connecting WLAN], then show [Connected printing], and print a WLAN report.

Wireless setup is now complete.

STEP2: Install application in mobile device:



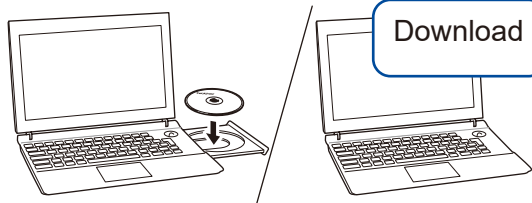
Download and install our free application **Brother iPrint&Scan**.



Read the two-dimensional code
(or Visit <http://m.95105369.com/l-SDownload.aspx>),
download and install our free application **Brother iPrint&Scan**.

NOTE:
We suggest Android users using a mobile browser to scan and download our product.

5 Install the driver on your computer



Put the installation disc into your CD/DVD drive, or download the Full Driver & Software Package at:

www.95105369.com

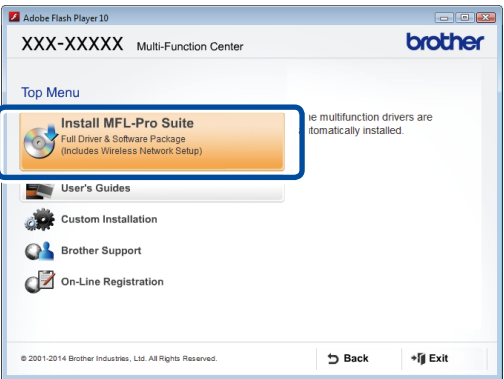
If you are using a recently released operating system on your computer, visit the above websites for updated driver and software information.

Brother regularly updates firmware to add features and apply bug fixes. To check for the latest firmware, visit support.brother.com/up5.

Follow the on-screen instructions and prompts.

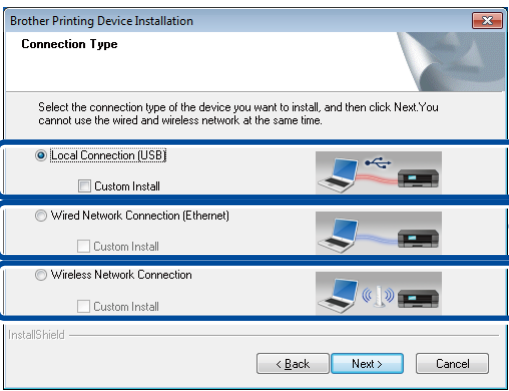
For Windows®:
If the Brother screen does not appear automatically, go to **Computer (This PC)**. Double-click the CD/DVD-ROM icon, and then double-click **start.exe**.

For Mac:
For full driver functionality, we recommend choosing the **CUPS driver** when adding a printer.



Follow the on-screen instructions until the **Connection Type** screen appears.

Connection Type



For USB Connection

For Wired Network Connection
Connect a network cable first.

For Wireless Network Connection
We recommend preparing a USB cable to use temporarily during the wireless setup.

Follow the on-screen instructions to continue installation.

Finish

NOTE:
If connection is unsuccessful, repeat this step.



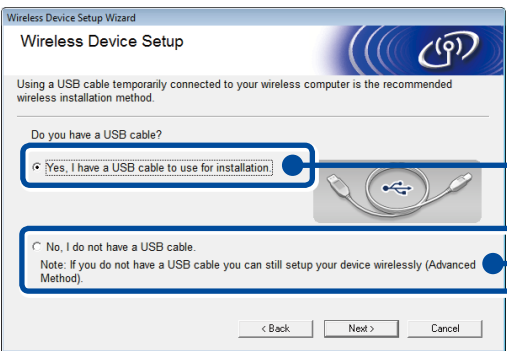
Wireless Network Connection

Find your SSID (Network Name) and Network Key (Password) on your wireless access point/router and write them in the table provided below.

SSID (Network Name)	
Network Key (Password)	

SSID: XXXXXXXX
Network key: XXXX

If you cannot find this information, ask your network administrator or wireless access point/router manufacturer.



[Recommended]
Select this option if you have a USB cable to use temporarily for wireless setup.

Select this option if you do not have a USB cable.

Follow the on-screen instructions to continue installation.

Finish

NOTE:
To see the related installation and using videos, please go into www.95105369.com, input your machine's model name, and go into Installation and Using Videos to see, you can also use the mobile device to scan this QR code.

