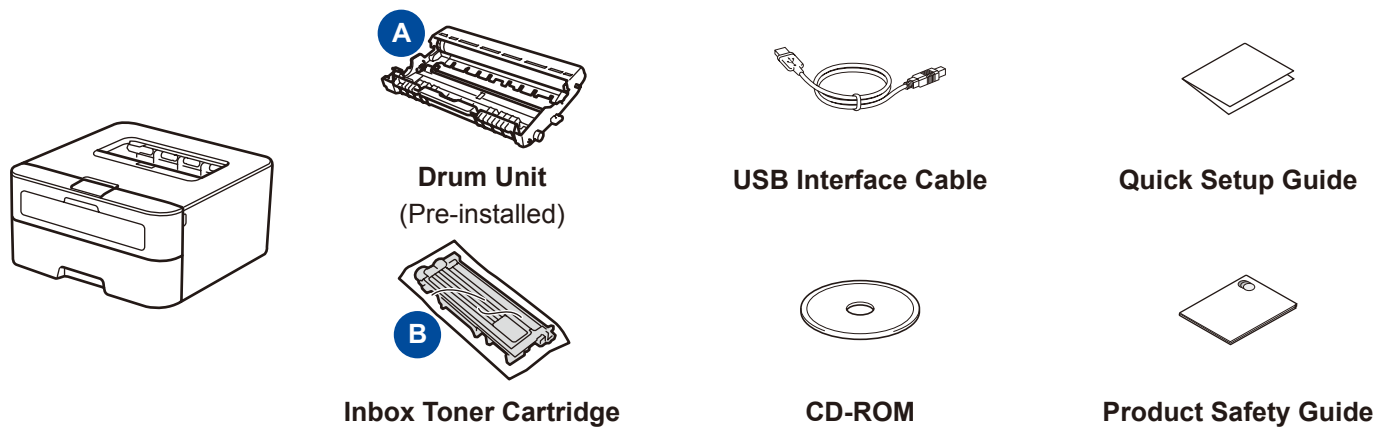


Unpack the machine and check the components



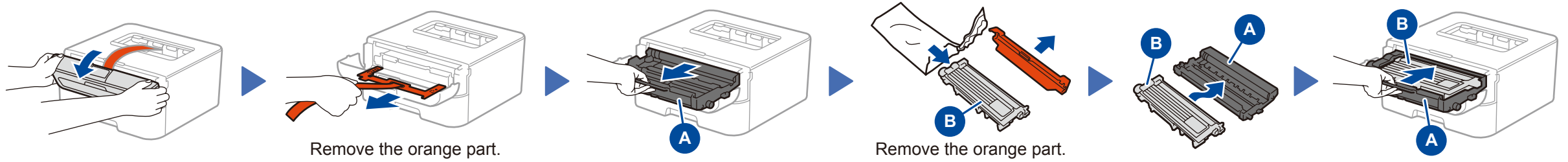
Read the Product Safety Guide first, then read this Quick Setup Guide for the correct installation procedure.

NOTE:

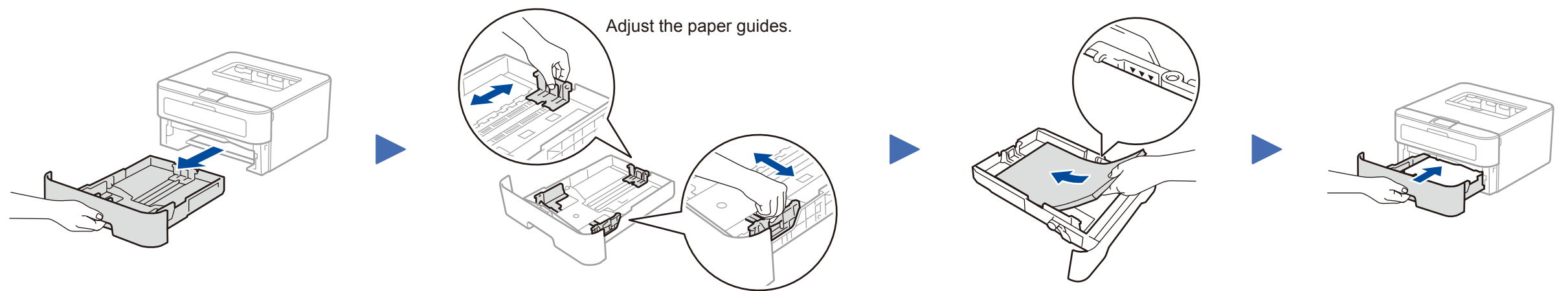
USB cable

We recommend using a USB 2.0 cable (Type A/B) that is no more than 2 meters.

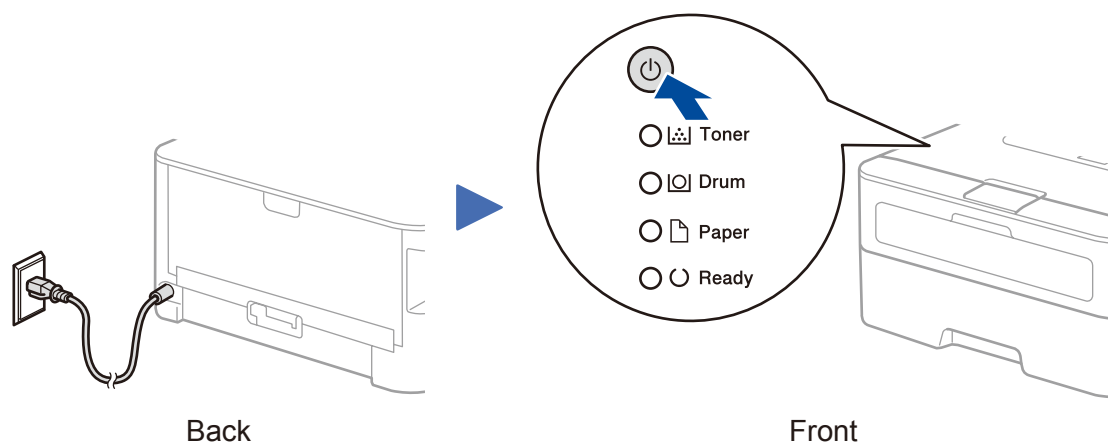
1 Remove the packing materials and install the toner cartridge



2 Load paper in the paper tray



3 Connect the power cord and turn on the machine



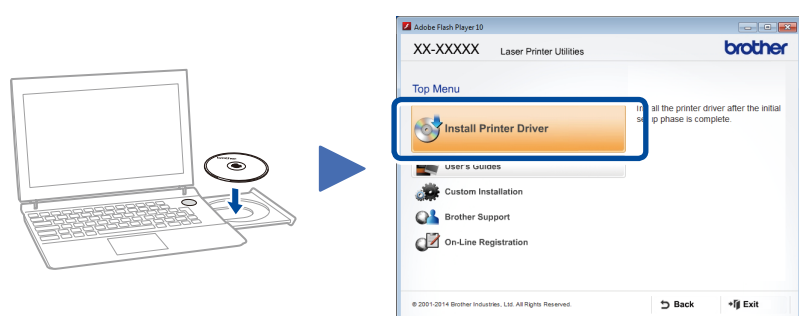
Printer LED Indications

Blinking: ☀ ON: ● or ● OFF: ○

	Toner Low ¹	Replace Toner	Drum End Soon ¹	Replace Drum	Drum ! ²	Paper Jam / Cover is Open ²	No Paper
Toner	☀	●	○	○	○	○	○
Drum	○	○	☀	●	☀	○	○
Paper	○	○	○	○	○	☀	●
Ready	○	○	●	●	○	○	○

¹ The yellow LED will blink in a pattern of ON for 2 seconds and then OFF for 3 seconds.
² The LED will blink ON and OFF at 0.5 second intervals.

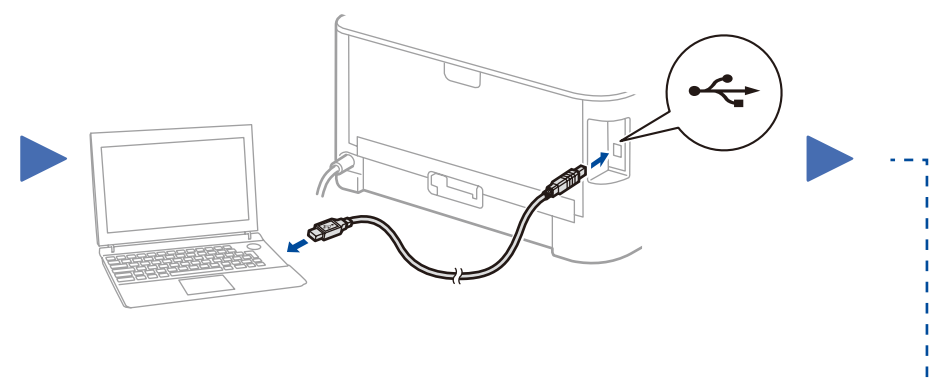
4A Configuration using the CD-ROM (Windows®)



Follow the on-screen instructions until the **Connect the machine** screen appears.

NOTE:

If the Brother screen does not appear automatically, go to **Computer (My Computer)**. (For Windows® 8: click the **File Explorer** icon on the taskbar, and then go to **Computer**.) Double-click the CD-ROM icon, and then double-click **start.exe**.



Follow the on-screen instructions to continue installation.

Finish

NOTE:

If connection is unsuccessful, repeat this step.

4B Configuration without using the CD-ROM (Windows® without CD-ROM drive or Macintosh)

Download the full driver and software package from the Brother Solutions Center.
(For Windows®) solutions.brother.com/windows
(For Macintosh) solutions.brother.com/mac