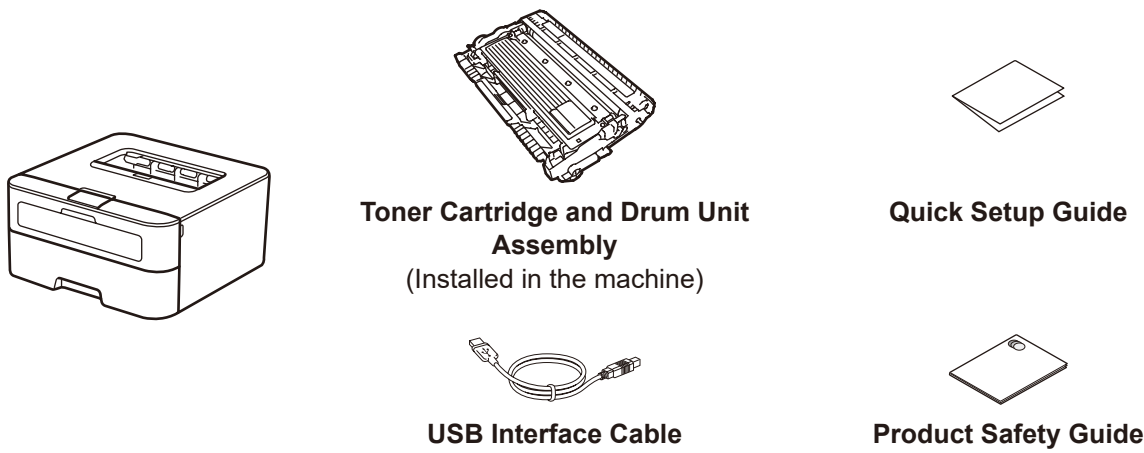


Unpack the machine and check the components

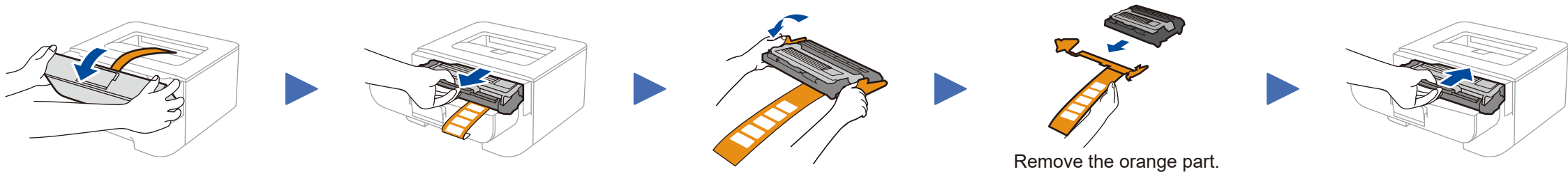


Read the Product Safety Guide first, then read this Quick Setup Guide for the correct installation procedure.

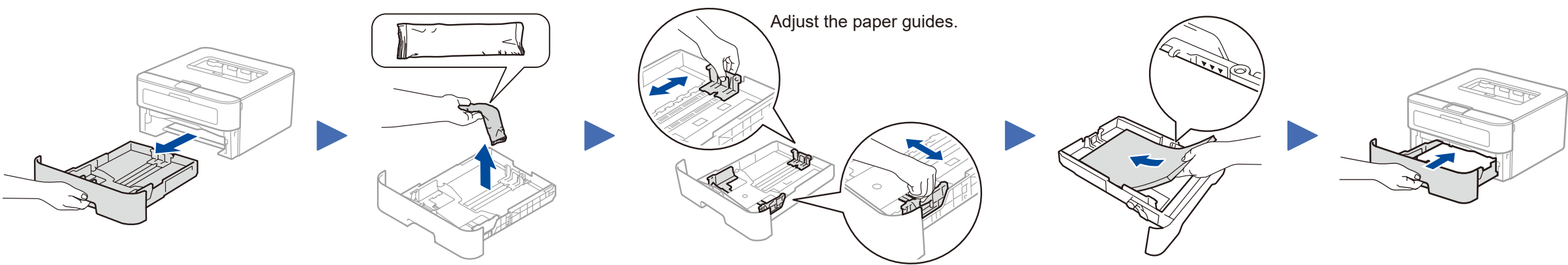
NOTE:

USB cable
We recommend using a USB 2.0 cable (Type A/B) that is no more than 2 meters.

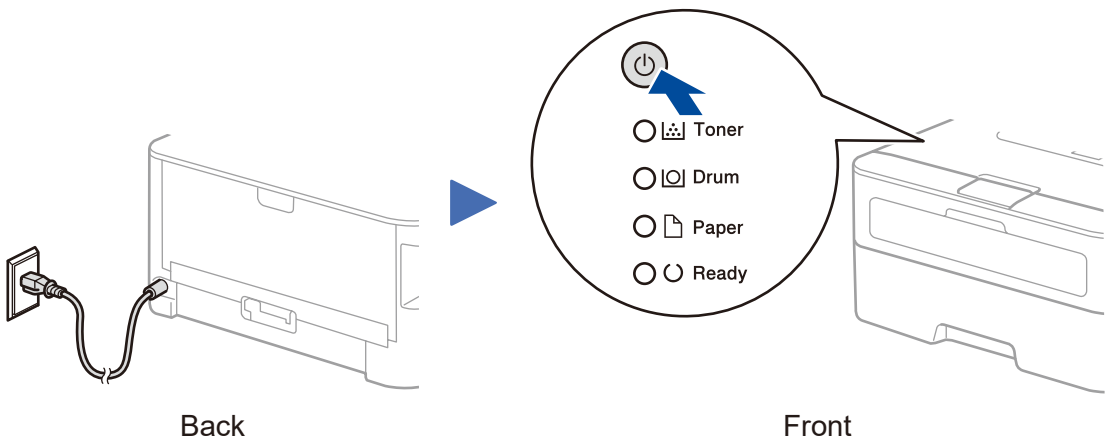
1 Remove the packing materials and install the toner cartridge



2 Load paper in the paper tray



3 Connect the power cord and turn on the machine



Printer LED Indications

Blinking: ☼ (yellow) ON: ● (green) or ● (yellow) OFF: ○

	Toner Low ¹	Replace Toner	Drum End Soon ¹	Replace Drum	Drum ! ²	Paper Jam / Cover is Open ²	No Paper
Toner	☼	●	○	○	○	○	○
Drum	○	○	☼	●	☼	○	○
Paper	○	○	○	○	○	☼	●
Ready	●	○	●	●	○	○	○

¹ The yellow LED will blink in a pattern of ON for 2 seconds and then OFF for 3 seconds.
² The LED will blink ON and OFF at 0.5 second intervals.

4 Connect the machine to your computer/mobile device

Download the full driver and software package from the Brother Solutions Center.
(For Windows®) solutions.brother.com/windows
(For Macintosh) solutions.brother.com/mac

Follow the on-screen instructions and prompts.

Setup Finished

You can now print using your machine.