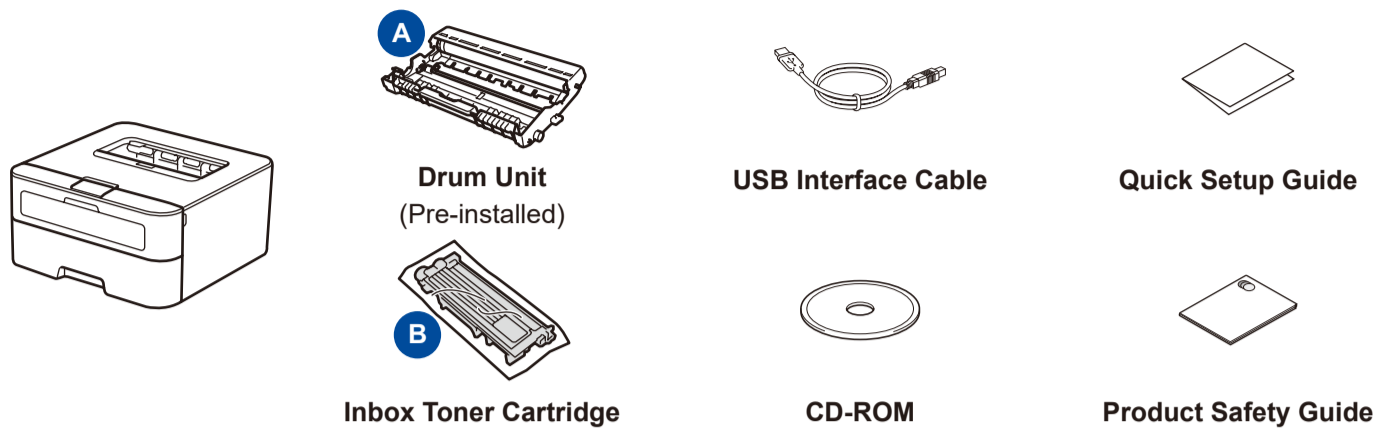


Unpack the machine and check the components



Read the Product Safety Guide first, then read this Quick Setup Guide for the correct installation procedure.

**NOTE:**

**USB cable**

We recommend using a USB 2.0 cable (Type A/B) that is no more than 2 meters.

**Network cable**

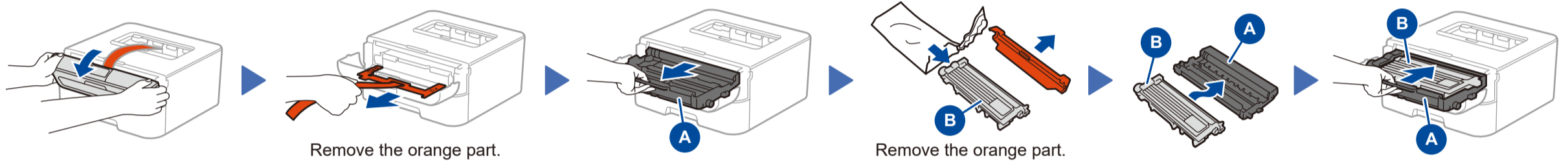
Use a straight-through Category 5 (or greater) twisted-pair cable for 10BASE-T or 100BASE-TX Fast Ethernet Network.

**Secure Network Access**

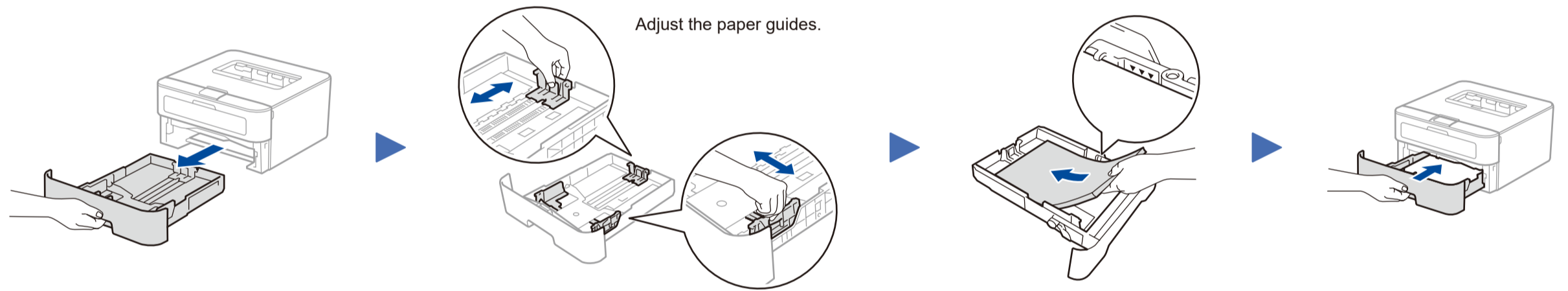
Your machine's default password is on the label on the back of the machine (preceded by "Pwd").

We strongly recommend you change it to protect your machine from unauthorised access.

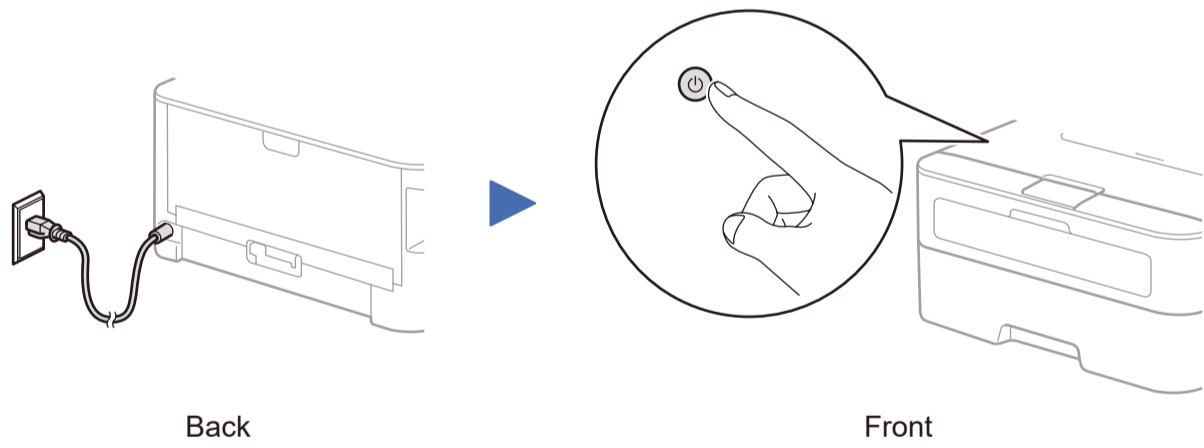
**1** Remove the packing materials and install the toner cartridge



**2** Load paper in the paper tray



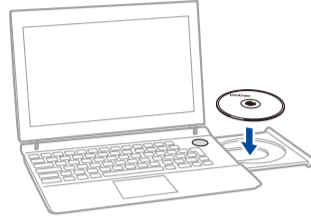
**3** Connect the power cord and turn on the machine




## 4 Connect the machine to your computer/mobile device

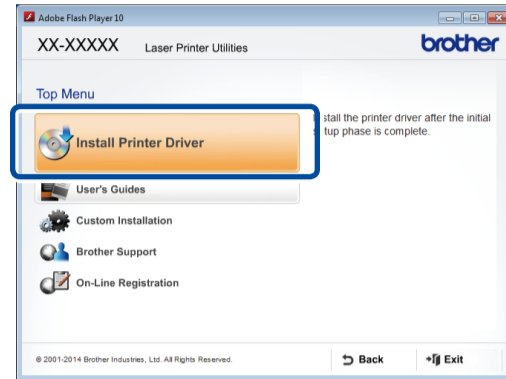
- Windows® PC with a CD-ROM drive, go to step **4A**
- Windows® PC without a CD-ROM drive, go to step **4B**
- Macintosh, go to step **4B**

### 4A Configuration using the CD-ROM (Windows®)



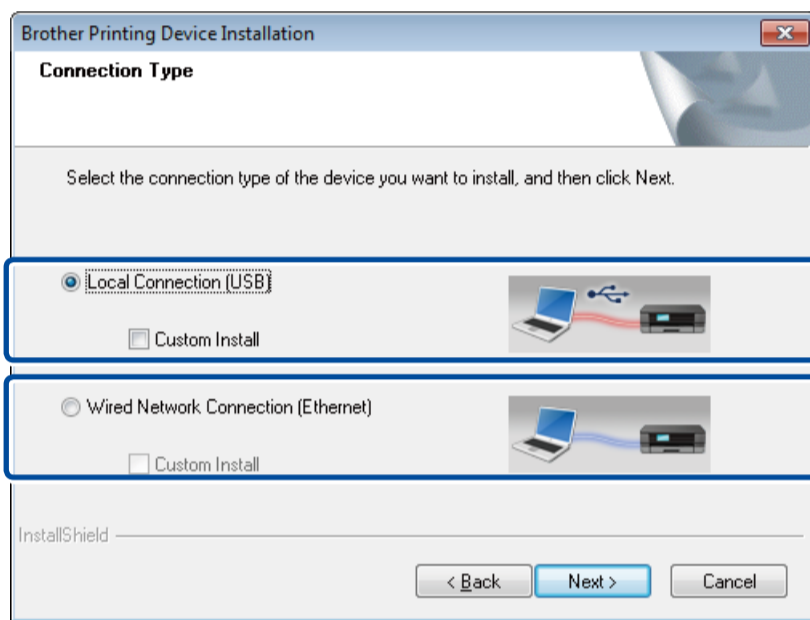
**NOTE:**

If the Brother screen does not appear automatically, go to **Computer (My Computer)**.  
(For Windows® 8: click the  (File Explorer) icon on the taskbar, and then go to **Computer**.)  
Double-click the CD-ROM icon, and then double-click **start.exe**.



Follow the on-screen instructions until the **Connection Type** screen appears.

#### Connection Type



For USB Connection

For Wired Network Connection  
Connect a network cable first.

Follow the on-screen instructions to continue installation.

**Finish**

**NOTE:**

If connection is unsuccessful, repeat this step.

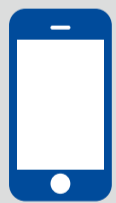
### 4B Configuration without using the CD-ROM (Windows® without CD-ROM drive or Macintosh)

Download the full driver and software package from the Brother Solutions Center.

(For Windows®) [solutions.brother.com/windows](http://solutions.brother.com/windows)

(For Macintosh) [solutions.brother.com/mac](http://solutions.brother.com/mac)

After you download the driver and software package, follow the on-screen instructions until the **Connection Type** screen appears. Refer to **4A Configuration using the CD-ROM (Windows®)**.



#### Print using your mobile device

Download “Brother iPrint&Scan” to start using your machine with mobile devices.



[solutions.brother.com/ips](http://solutions.brother.com/ips)